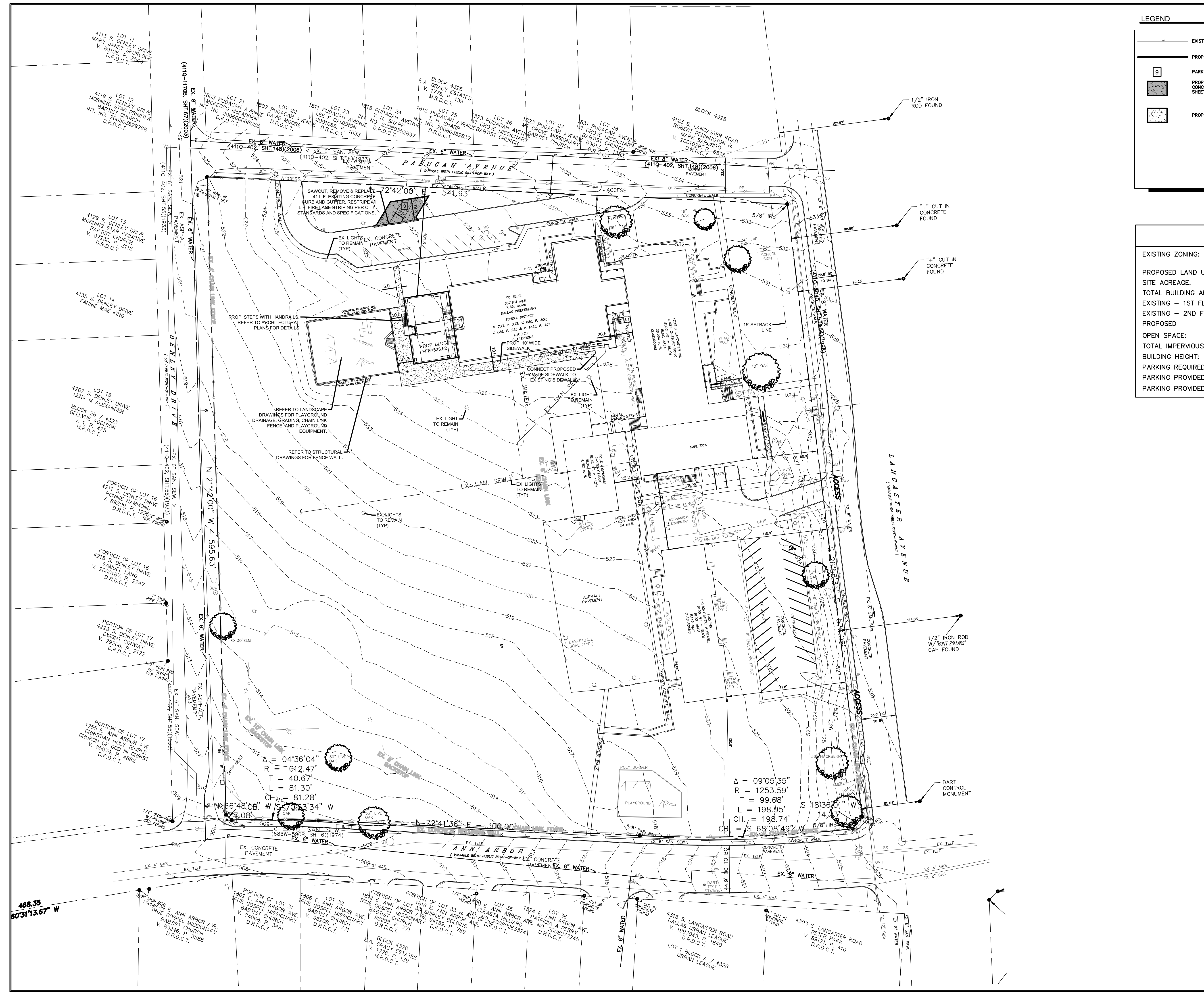


LEGEND

- EXISTING ASPHALT
- PROPOSED CURB
- PARKING SPACES IN A ROW
- PROPOSED 8" REINFORCED, MEDIUM DUTY CONCRETE PAVEMENT PER DETAIL, THIS SHEET
- PROPOSED SIDEWALK PAVEMENT

SITE DATA SUMMARY CHART

EXISTING ZONING:	CR – COMMUNITY RETAIL
PROPOSED LAND USE:	R7.5 – SINGLE FAMILY
SITE ACREAGE:	PUBLIC SCHOOL
TOTAL BUILDING AREA:	7.758 ACRES (337,931 SQ FT)
EXISTING – 1ST FLOOR:	26,158 SQ FT
EXISTING – 2ND FLOOR:	11,794 SQ FT
PROPOSED:	2,617 SQ FT
OPEN SPACE:	225,923 / 337,931 : 68%
TOTAL IMPERVIOUS AREA:	79,125 / 337,931 : 23%
BUILDING HEIGHT:	2 STORY, (39"–8" HEIGHT)
PARKING REQUIRED (1.5 SPACES PER CLASSROOM):	45 SPACES
PARKING PROVIDED TOTAL (3 + EXISTING 43):	46 SPACES
PARKING PROVIDED (ACCESSIBLE):	3 SPACES



REVISION	DATE	DISCRIPTION
 CARRILLO ENGINEERING, LLC REGISTRATION NO. F-15893 301 COMMERCE STREET, SUITE 1410 FORT WORTH, TEXAS 76102		
HI HOLLAND ELEMENTARY SCHOOL 4203 SOUTH LANCASTER ROAD DALLAS, TEXAS 75216 BLOCK 4325, TRACK 1 CITY OF DALLAS, DALLAS COUNTY, TEXAS		
DATE	SHEET TITLE	SHEET NO.
2.7.2017	DEVELOPMENT PLAN	1