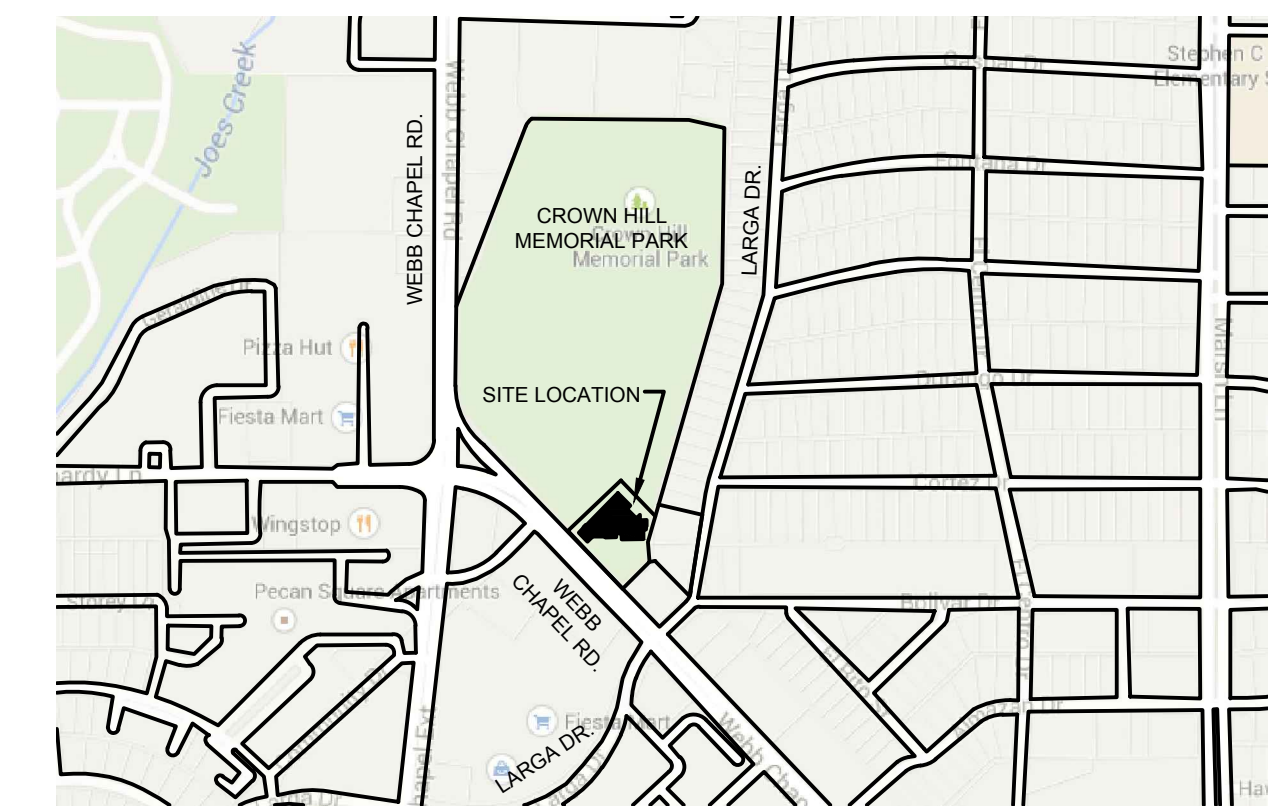


**VICINITY MAP**  
NOT TO SCALE

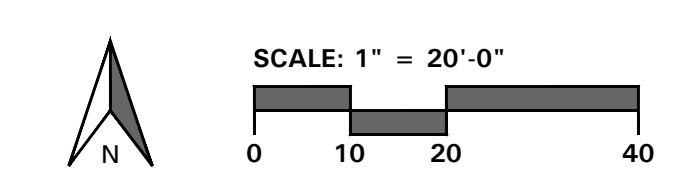
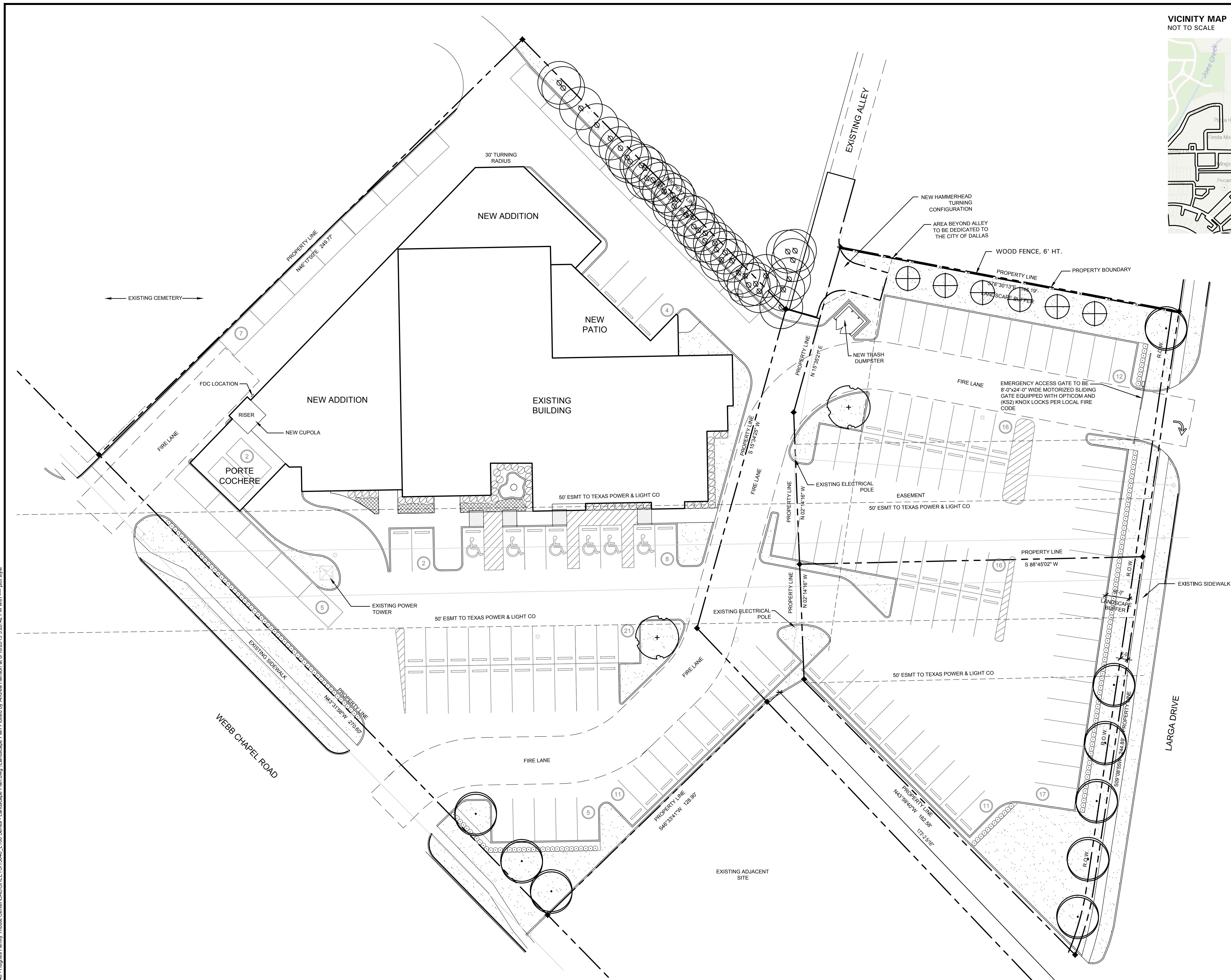


**LANDSCAPE TABULATIONS**  
THE CITY OF DALLAS, TEXAS

- PERIMETER LANDSCAPE BUFFER STRIP REQUIREMENTS**  
1. 10' wide buffer with one group of buffer plant materials per 50 l.f.
- Perimeter Landscape Buffer Strip: 145 l.f.  
Required (6) trees, 3" cal. Provided (6) trees, 3" cal.
- SITE TREE REQUIREMENTS**  
1. One (1) tree, 2" cal., per 4,000 s.f. of lot area
- Site Area: 95,752 s.f.  
Required (24) trees, 2" cal. Provided (24+) existing trees, 2" cal. +
- STREET TREE REQUIREMENTS**  
1. One (1) tree, 3" cal., per 50 l.f. of street frontage
- Webb Chapel Road: 271 l.f.  
Required (5) trees, 3" cal. Provided (3) trees, 3" cal.
- Larga Road: 275 l.f.  
Required (6) trees, 3" cal. Provided (6) trees, 3" cal.
- DESIGN STANDARDS (Two required)**  
**SCREENING OF OFF-STREET PARKING**  
1. Screen all parking lots along entire adjacent public street frontage with 36" ht. evergreen shrub.
- FOUNDATION PLANTING STRIP**  
1. Planting area must be a minimum of 3' in width and extend along at least 50% of the portion of foundation that faces a street.
- Facade = 340 l.f.  
Required 170 l.f. (50%) Provided 170 l.f. (50%)

**LEGEND**

- TREES**
- ⊙ EXISTING TREE TO REMAIN
  - ⊙ LARGE CANOPY TREE
  - ⊙ LARGE CANOPY TREE
  - ⊕ LARGE NON-CANOPY TREE
- SHRUBS/GROUNDCOVER**
- ⊙ EVERGREEN SHRUB
  - ⊙ SHRUB
  - ▨ GROUNDCOVER
  - ▨ LAWN



• 4245 North Central Expy  
• Suite 501  
• Dallas, Texas 75205  
• 214.865.7192 office

ZONING FILE NUMBER: Z145-264