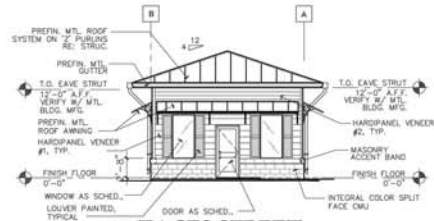
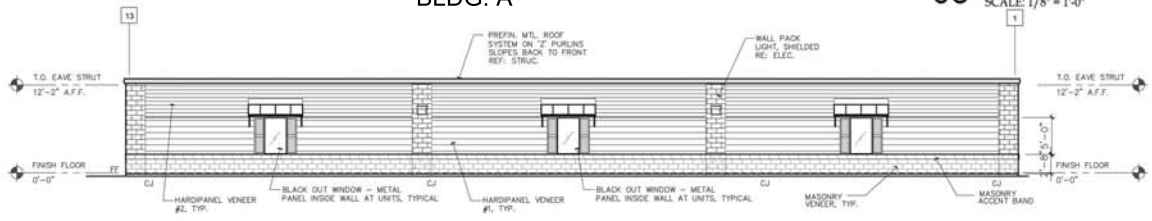


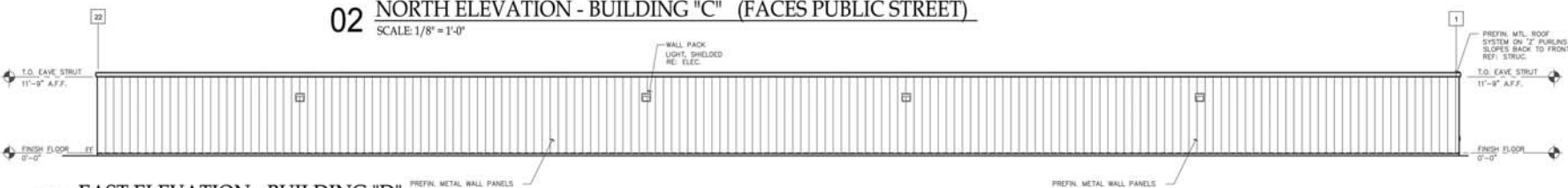
**02 NORTH ELEVATION (FACES PUBLIC STREET)**  
SCALE: 1/8" = 1'-0" BLDG. A



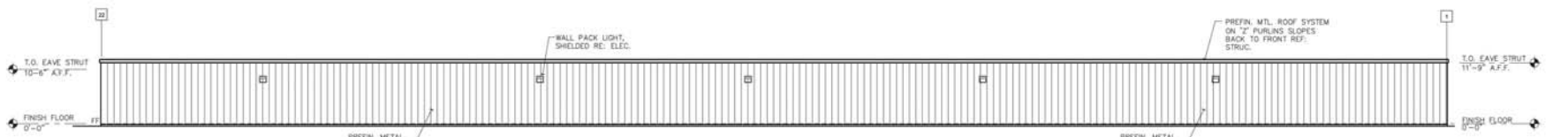
**03 WEST ELEVATION BLDG. A**  
SCALE: 1/8" = 1'-0"



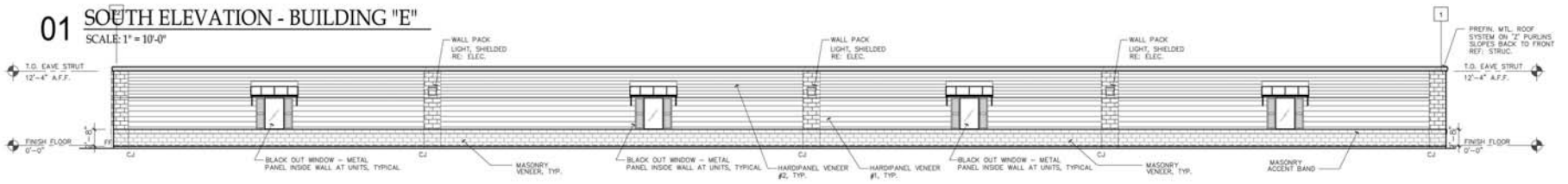
**02 NORTH ELEVATION - BUILDING "C" (FACES PUBLIC STREET)**  
SCALE: 1/8" = 1'-0"



**01 EAST ELEVATION - BUILDING "D"**  
SCALE: 1/8" = 1'-0"



**01 SOUTH ELEVATION - BUILDING "E"**  
SCALE: 1" = 10'-0"



**01 WEST ELEVATION - BUILDING "F" (FACES STREET)**  
SCALE: 1/8" = 1'-0"

REVISIONS:	DATE	DESCRIPTION
NO.		

DATE: 07/14/2016

SHEET TITLE:

ELEVATIONS

SHEET NUMBER:

**A2.1**