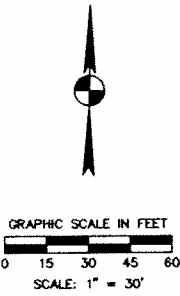
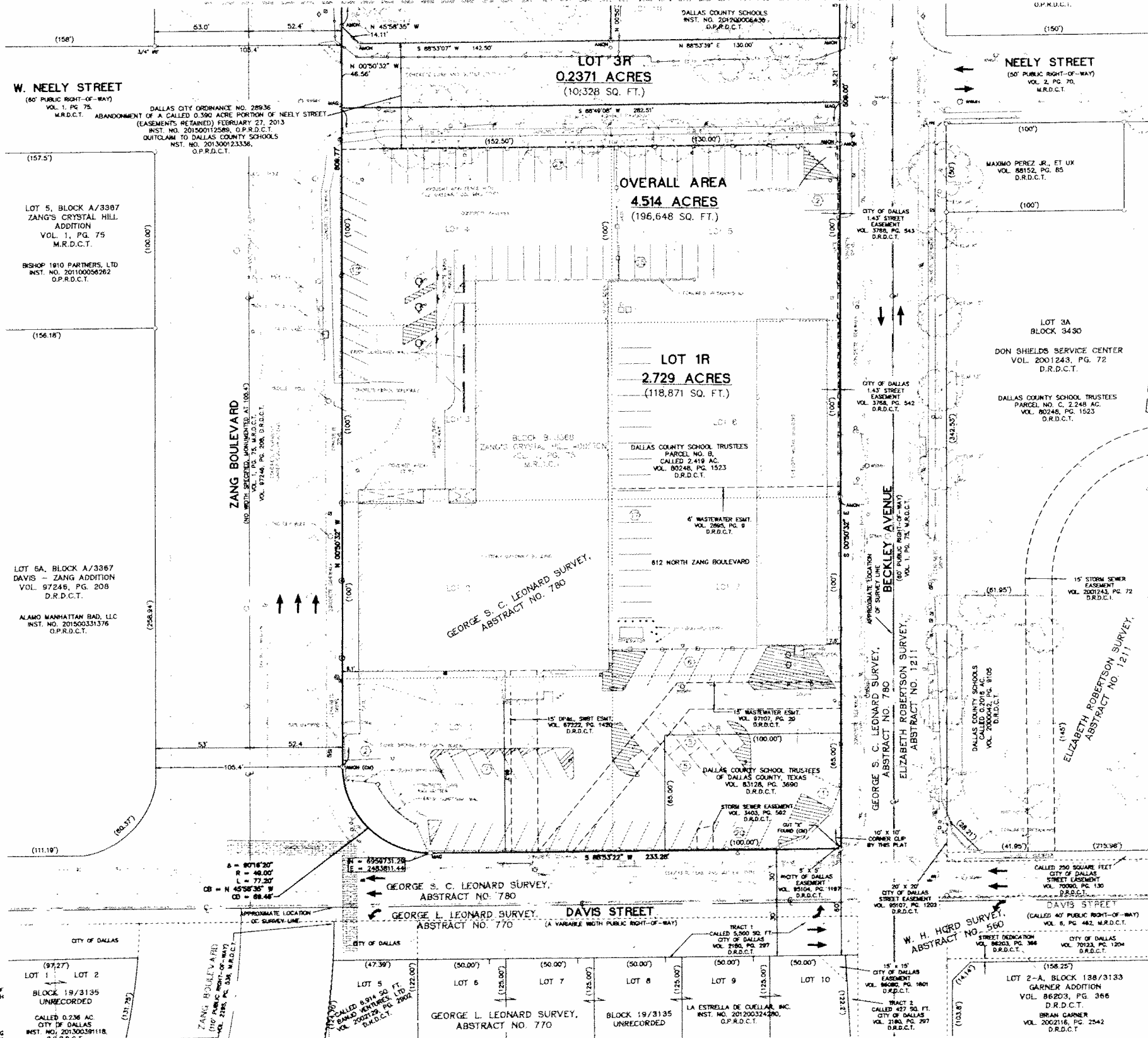


VICINITY MAP
MAPSCO 540
(NOT TO SCALE)



SEE SHEET 2 OF 3



LEGEND	
IR	IRON ROD FOUND
IP	IRON PIPE FOUND
CRF	5/8-INCH IRON ROD WITH YELLOW PLASTIC CAP STAMPED "BURY" FOUND (UNLESS NOTED OTHERWISE)
AMON	5/8-INCH IRON ROD WITH 3 1/4" ALUMINUM DISK STAMPED "DALLAS COUNTY SCHOOLS ADDITION RPLS 5504" FOUND
AMON SET	5/8-INCH IRON ROD WITH 3 1/4" ALUMINUM DISK STAMPED "DCS-STATIST" SET
MAG	MAGNETIC NAIL WITH WASHER STAMPED "RPLS 5504" FOUND
PC	POINT FOR CORNER
D.R.D.C.T.	DEED RECORDS OF DALLAS COUNTY, TEXAS
M.R.D.C.T.	MAP RECORDS OF DALLAS COUNTY, TEXAS
O.P.R.D.C.T.	OFFICIAL PUBLIC RECORDS OF DALLAS COUNTY, TEXAS
(XX.XX)	RECORD INFORMATION
(CM)	CONTROLLING MONUMENT
DPA L	DALLAS POWER AND LIGHT
SWBT	SOUTHWESTERN BELL TELEPHONE
VOL. PG.	VOLUME, PAGE
SQ. FT.	SQUARE FEET
TPP	TYPICAL
GI	GRATE INLET
CI	CURB INLET
WMH	WASTEWATER MANHOLE
SDMH	STORM DRAIN MANHOLE
MM	MONITORING WELL
GT	GREASE TRAP MANHOLE
DO	WASTEWATER CLEANOUT
TSP	TRAFFIC SIGNAL POLE
TSB	TRAFFIC SIGNAL BOX
A/C	AIR CONDITIONER
SM	STREET MONUMENT
LF	LIGHT POLE
UP	UTILITY POLE
WM	WATER METER
WEC	WASTEWATER CLEANOUT
WR	WATER VALVE
FD	FIRE HYDRANT
UI	UTILITY INLET
GV	GAS VALVE
FP	FLAG POLE
B	BOLLARD
MB	MAIL BOX
PC	PARKING SPACE COUNT
OW	OVERHEAD WIRES
GM	GAS METER
FD	FIRE HYDRANT
OC	DENOTES COMMON OWNERSHIP
HP	HANDICAP PARKING
OC	OAK 10"
	TREE CANOPY/TYPE AND SIZE

PRELIMINARY PLAT
DALLAS COUNTY SCHOOLS ADDITION
LOTS 1R, 2R, 3R AND 4R, BLOCK B/3368

REPLAT OF LOTS 1-8, BLOCK B/3368,
ALL OF LOTS 3 & 4, BLOCK C/3369, A PORTION OF LOT 10,
BLOCK C/3369 OF ZANG'S CRYSTAL HILL ADDITION,
RECORDED IN VOLUME 1, PAGE 75, M.R.D.C.T. &
ALL OF LOT 1A, BLOCK B/3369
OF DCS ADMINISTRATIVE PARKING ON ZANG,
RECORDED IN INSTRUMENT NO. 201100266127, O.P.R.D.C.T.
NEELY STREET RIGHT-OF-WAY ABANDONMENT
PER CITY OF DALLAS ORDINANCE NO. 28936
IN THE GEORGE S. C. LEONARD SURVEY, ABSTRACT NO. 780,
CITY OF DALLAS, DALLAS COUNTY, TEXAS
TOTAL ACRES - 4.514 ACRES
CITY PLAN FILE NO. S156-255
JULY 22, 2016

OWNER:
DALLAS COUNTY SCHOOLS, ET. AL.
612 N. ZANG BLVD.
DALLAS, TEXAS 75208
PH: (214) 944-4568
CONTACT: RICK SORRELLS

SURVEYOR:
STANTEC CONSULTING SERVICES INC.
5310 HARVEST HILL, SUITE 100
DALLAS, TEXAS 75230
PH: (972) 991-0011
CONTACT: DAVID DE WEIRDT, R.P.L.S.
TBPLS REGISTRATION NO. 10194229

- NOTES:
- COORDINATES AND BEARINGS SHOWN HEREIN ARE REFERENCED TO THE STATE PLANE COORDINATE SYSTEM, NORTH TEXAS CENTRAL ZONE, 4202, NORTH AMERICAN DATUM OF 1983, (2011).
 - LOT-TO-LOT DRAINAGE IS NOT PERMITTED WITHOUT ENGINEERING SECTION APPROVAL.
 - THE PURPOSE OF THIS PLAT IS TO CREATE A LEGAL BUILDING LOT FOR DEVELOPMENT PURPOSES AND TO COMBINE MULTIPLE LOTS INTO 4 LOTS.
 - REFERENCE BENCHMARK:
CITY OF DALLAS BENCHMARK NUMBER 54-0-2 SQUARE CUT FOUND ON TOP OF CURB AT THE CENTER OF CURB INLET ALONG THE SOUTH SIDE OF EAST SIXTH STREET IN FRONT OF HOUSE NUMBER 216-218. REFERENCE ELEVATION = 451.06'
 - SITE BENCHMARKS:
CUT "X" SET AT THE SOUTHWEST CORNER OF CANTY STREET AND ZANG BOULEVARD, APPROXIMATELY 50-FEET EAST FROM THE CENTERLINE OF ZANG BOULEVARD, APPROXIMATELY 15-FEET SOUTH FROM THE CENTERLINE OF CANTY STREET. ELEVATION = 500.33'
SQUARE CUT SET ON TOP OF CURB OF STORM SEWER INLET ALONG THE EAST SIDE OF ZANG BOULEVARD APPROXIMATELY 50-FEET EAST FROM THE CENTERLINE OF ZANG BOULEVARD, APPROXIMATELY 45-FEET SOUTH FROM THE CENTERLINE OF DAVIS STREET. ELEVATION = 480.19'
 - ONSITE IMPROVEMENTS ARE TO BE DEMOLISHED WITH RE-DEVELOPMENT.
 - NO STRUCTURES OBSERVED ON THE REMAINDER OF LOT 10.