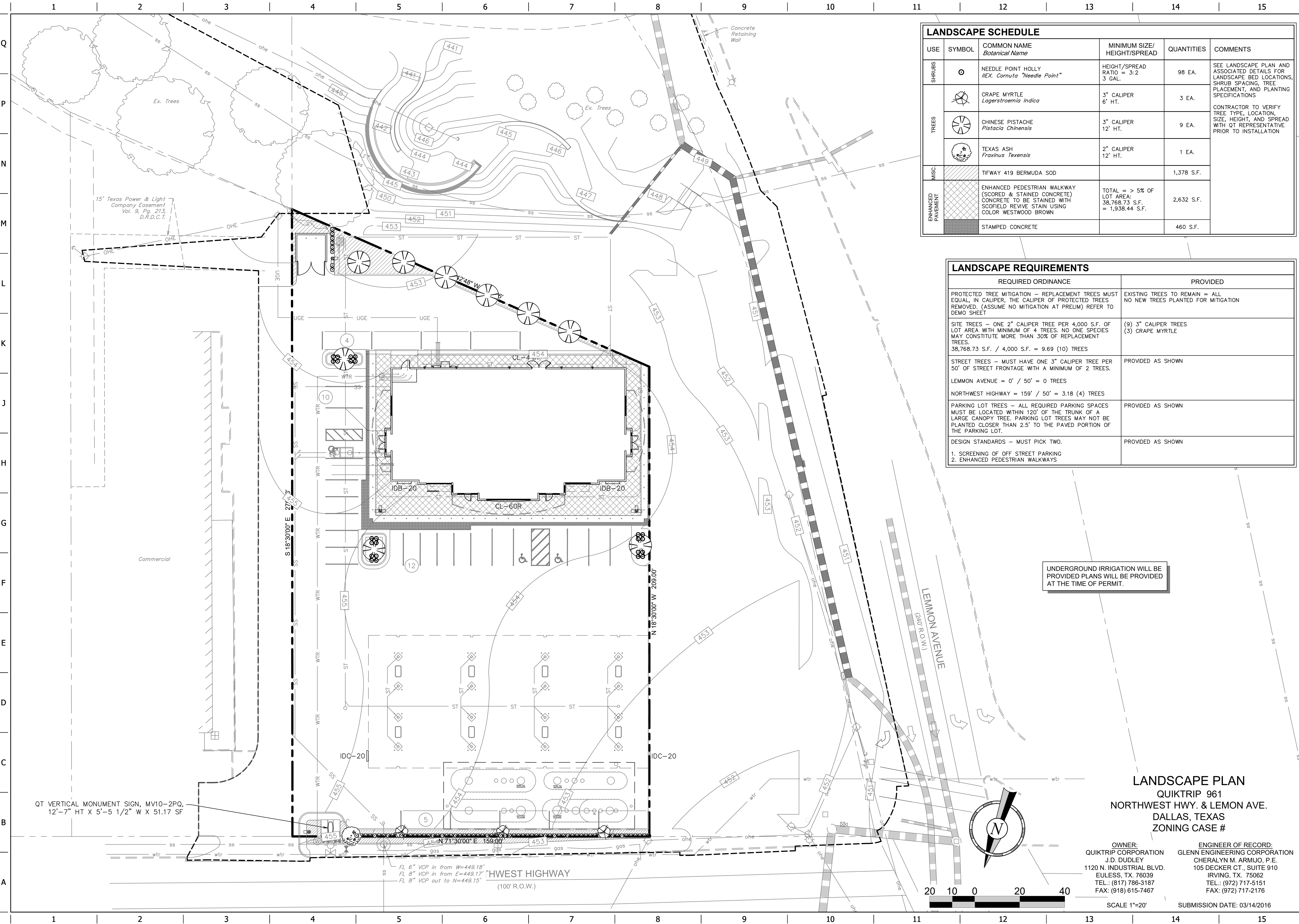


FILE LOCATION: F:\Public\Projects\QuikTrip\961 Dallas\08-0961 Civil.dwg TAB NAME: QT Landscape Revision (Prelim) USER: KKE SAVED: 8/23/2017 5:35 PM PLOTTED: 8/24/2017 10:09 AM



| LANDSCAPE SCHEDULE | | | | | |
|--------------------|--------|--|---|------------|---|
| USE | SYMBOL | COMMON NAME <i>Botanical Name</i> | MINIMUM SIZE/ HEIGHT/SPREAD | QUANTITIES | COMMENTS |
| SHRUBS | ○ | NEEDLE POINT HOLLY <i>Ilex Cornuta "Needle Point"</i> | HEIGHT/SPREAD RATIO = 3:2 3 GAL. | 98 EA. | SEE LANDSCAPE PLAN AND ASSOCIATED DETAILS FOR LANDSCAPE BED LOCATIONS, SHRUB SPACING, TREE PLACEMENT, AND PLANTING SPECIFICATIONS |
| TREES | ⊗ | CRAPE MYRTLE <i>Lagerstroemia Indica</i> | 3" CALIPER 6' HT. | 3 EA. | CONTRACTOR TO VERIFY TREE TYPE, LOCATION, SIZE, HEIGHT, AND SPREAD WITH QT REPRESENTATIVE PRIOR TO INSTALLATION |
| | ⊗ | CHINESE PISTACHE <i>Pistacia Chinensis</i> | 3" CALIPER 12' HT. | 9 EA. | |
| | ⊗ | TEXAS ASH <i>Fraxinus Texensis</i> | 2" CALIPER 12' HT. | 1 EA. | |
| MISC | | TIFWAY 419 BERMUDA SOD | | 1,378 S.F. | |
| ENHANCED PAVEMENT | | ENHANCED PEDESTRIAN WALKWAY (SCORED & STAINED CONCRETE) CONCRETE TO BE STAINED WITH SCOFIELD REVIVE STAIN USING COLOR WESTWOOD BROWN | TOTAL = > 5% OF LOT AREA: 38,768.73 S.F. = 1,938.44 S.F. | 2,632 S.F. | |
| | | STAMPED CONCRETE | | 460 S.F. | |

| LANDSCAPE REQUIREMENTS | |
|---|---|
| REQUIRED ORDINANCE | PROVIDED |
| PROTECTED TREE MITIGATION - REPLACEMENT TREES MUST BE EQUAL, IN CALIPER, TO THE CALIPER OF PROTECTED TREES REMOVED. (ASSUME NO MITIGATION AT PRELIM) REFER TO DEMO SHEET | EXISTING TREES TO REMAIN = ALL NO NEW TREES PLANTED FOR MITIGATION |
| SITE TREES - ONE 2" CALIPER TREE PER 4,000 S.F. OF LOT AREA WITH MINIMUM OF 4 TREES. NO ONE SPECIES MAY CONSTITUTE MORE THAN 30% OF REPLACEMENT TREES. 38,768.73 S.F. / 4,000 S.F. = 9.69 (10) TREES | (9) 3" CALIPER TREES (3) CRAPE MYRTLE |
| STREET TREES - MUST HAVE ONE 3" CALIPER TREE PER 50' OF STREET FRONTAGE WITH A MINIMUM OF 2 TREES. LEMON AVENUE = 0' / 50' = 0 TREES NORTHWEST HIGHWAY = 159' / 50' = 3.18 (4) TREES | PROVIDED AS SHOWN |
| PARKING LOT TREES - ALL REQUIRED PARKING SPACES MUST BE LOCATED WITHIN 120' OF THE TRUNK OF A LARGE CANOPY TREE. PARKING LOT TREES MAY NOT BE PLANTED CLOSER THAN 2.5' TO THE PAVED PORTION OF THE PARKING LOT. | PROVIDED AS SHOWN |
| DESIGN STANDARDS - MUST PICK TWO. 1. SCREENING OF OFF STREET PARKING 2. ENHANCED PEDESTRIAN WALKWAYS | PROVIDED AS SHOWN |

UNDERGROUND IRRIGATION WILL BE PROVIDED PLANS WILL BE PROVIDED AT THE TIME OF PERMIT.

LANDSCAPE PLAN
QUIKTRIP 961
NORTHWEST HWY. & LEMON AVE.
DALLAS, TEXAS
ZONING CASE #

OWNER:
 QUIKTRIP CORPORATION
 J.D. DUDLEY
 1120 N. INDUSTRIAL BLVD.
 EULESS, TX. 76039
 TEL.: (817) 786-3187
 FAX: (818) 615-7467

ENGINEER OF RECORD:
 GLENN ENGINEERING CORPORATION
 CHERALYN M. ARMJO, P.E.
 105 DECKER CT., SUITE 910
 IRVING, TX. 75062
 TEL.: (972) 717-5151
 FAX: (972) 717-2176

SCALE 1"=20'
 SUBMISSION DATE: 03/14/2016

PROJECT NO.: #####

GLENN ENGINEERING
 PHONE: (972) 717-5151
 105 DECKER COURT, SUITE 910
 IRVING, TEXAS 75062
 TEXAS REGISTRATION NUMBER: F-303

QuikTrip No. 0961

3740 W. NORTHWEST HWY.
 DALLAS, TX.

QT

© COPYRIGHT QUIKTRIP CORPORATION 2011
 ANY UNAUTHORIZED USE, REPRODUCTION,
 PUBLICATION, DISTRIBUTION, OR SALE IN
 WHOLE OR IN PART, IS STRICTLY FORBIDDEN.

PROTOTYPE: P-91 (05/02/17)
 DIVISION: 08
 VERSION: 001
 DESIGNED BY: CMA
 DRAWN BY: KKE
 REVIEWED BY: POTTER

| REV | DATE | DESCRIPTION |
|-----|------|-------------|
| | | |
| | | |
| | | |
| | | |
| | | |
| | | |
| | | |
| | | |
| | | |
| | | |

ORIGINAL ISSUE DATE: 12/06/13

SHEET TITLE:
 LANDSCAPE PLAN

SHEET NUMBER:
4