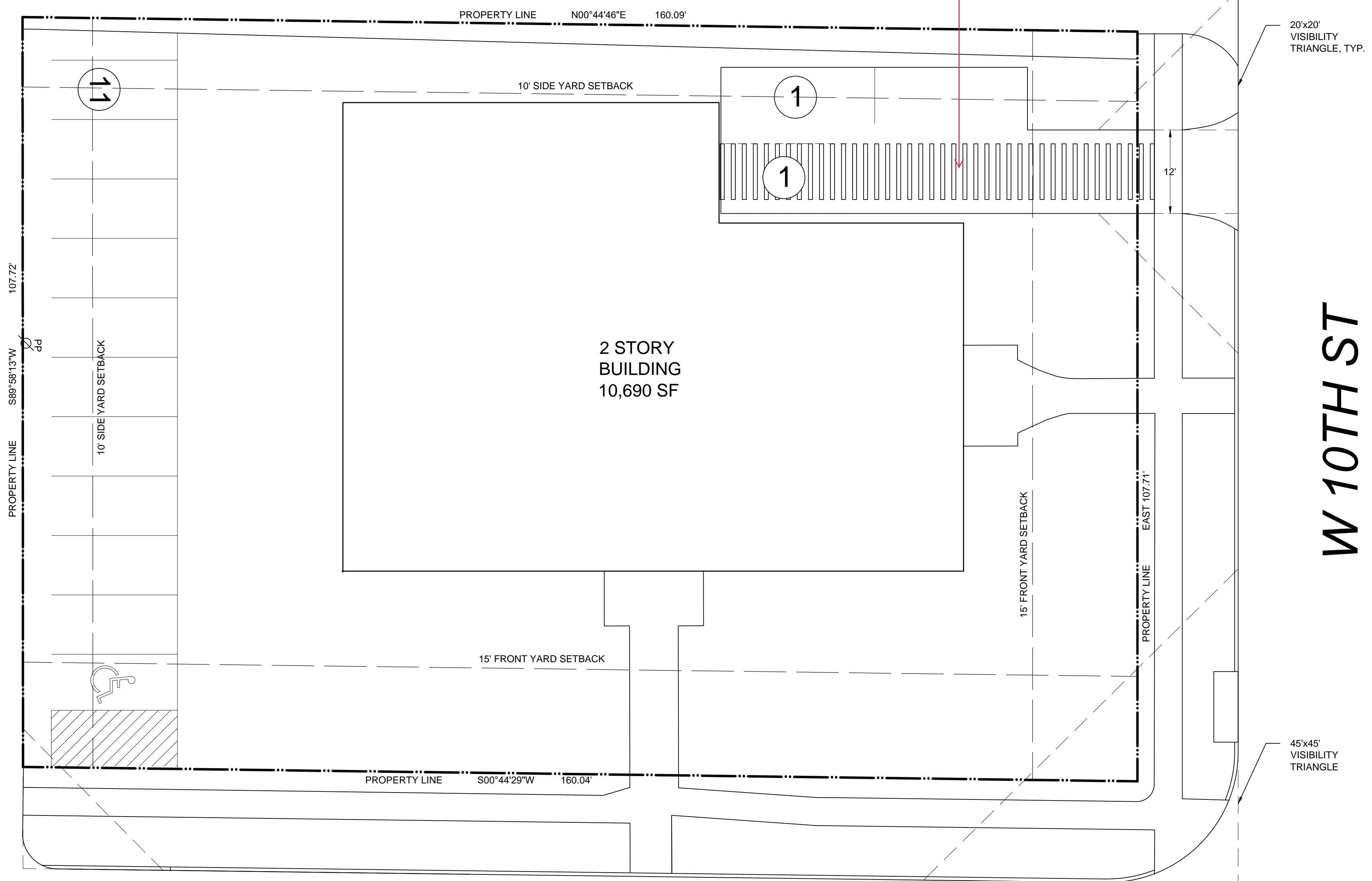
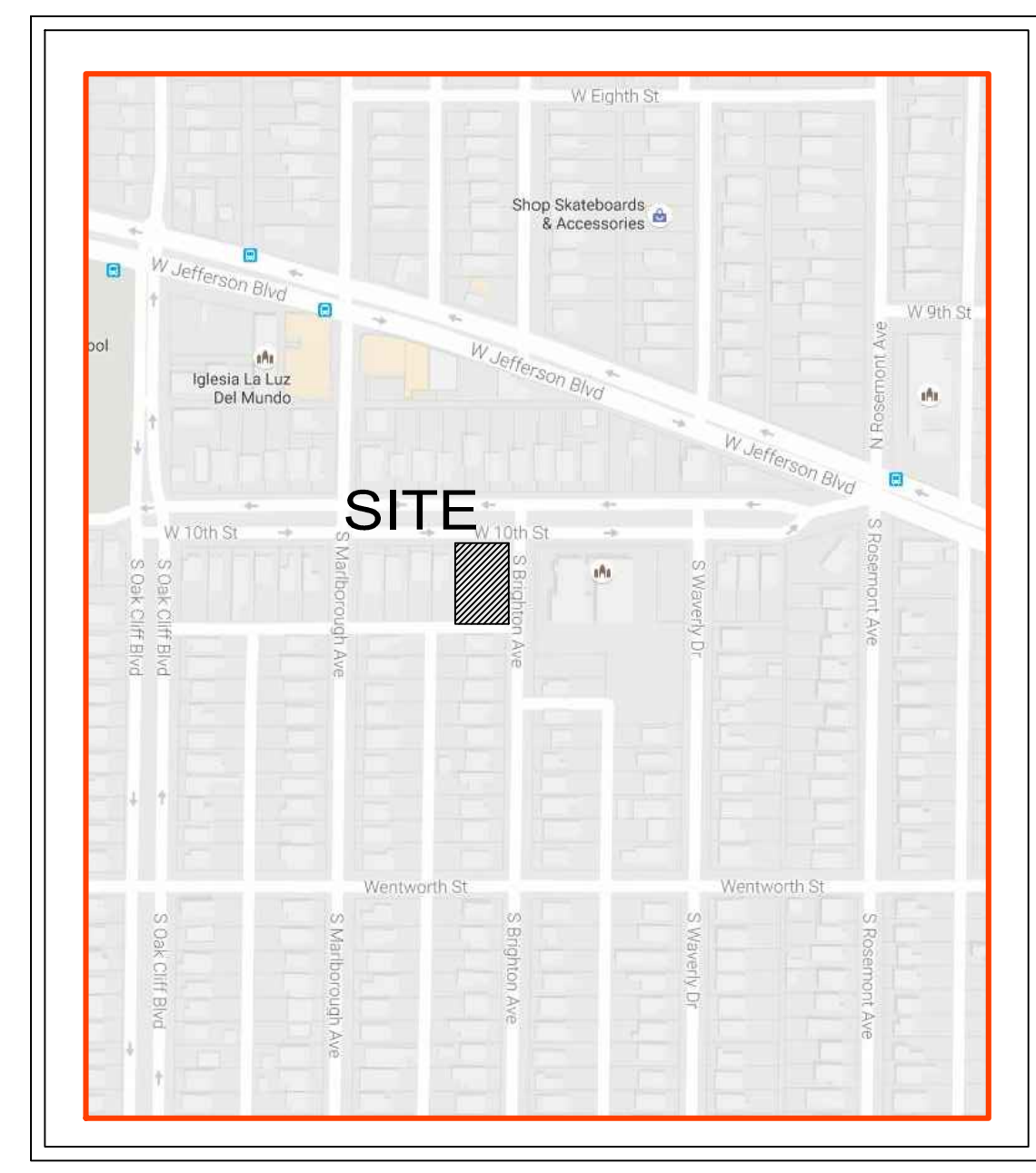


16' ALLEY



BRIGHTON AVE.

W 10TH ST



VICINITY MAP

NTS



SITE DATA TABLE
ZONING DISTRICT PD

TOTAL SITE AREA	17,240 SF	0.40 AC
LAND USE	MULTIFAMILY	
TOTAL FLOOR AREA	10,690 SF	
TOTAL DENSITY	7 UNITS	
	REQ./MAX.	PROVIDED
BUILDING HEIGHT	36 FT	
	SUBJECT TO	
	RPS	26'
BUILDING STORIES	NO MAX	2
LOT COVERAGE	60%	31%
SETBACKS		
	REQ./MIN.	PROVIDED
FRONT SETBACK	15 FT	15 FT
SIDE SETBACK	10 FT	10 FT
REAR SETBACK	N/A	N/A
PARKING		
	REQ.	PROVIDED
PARKING (1 PER BEDROOM)	9	12
HANDICAP PARKING	1	1
GUEST PARKING	NO	N/A
	ADDITIONAL	N/A
TOTAL PARKING	9	13

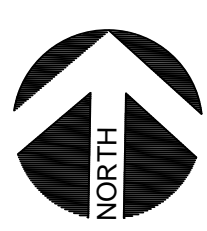
NOTE: BIKE PARKING LOCATION TO BE DETERMINED

12/16/2016
PROJECT NUMBER
CASE NUMBER

BALDWIN ASSOCIATES
3904 Elm Street, Suite B
Dallas, Texas 75226
MOBILE: 214.729.7949
OFFICE: 214.824.7949
rob@baldwinplanning.com



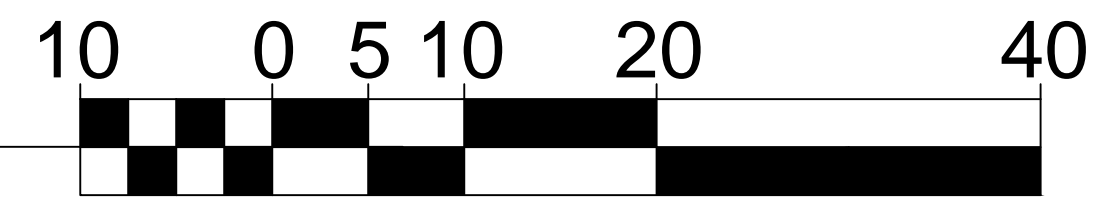
1900 W 10TH STREET
CITY OF DALLAS, TEXAS



1

DEVELOPMENT SITE PLAN

SCALE: 1" = 10'-0"



CASE NUMBER: Z167-120(SM)