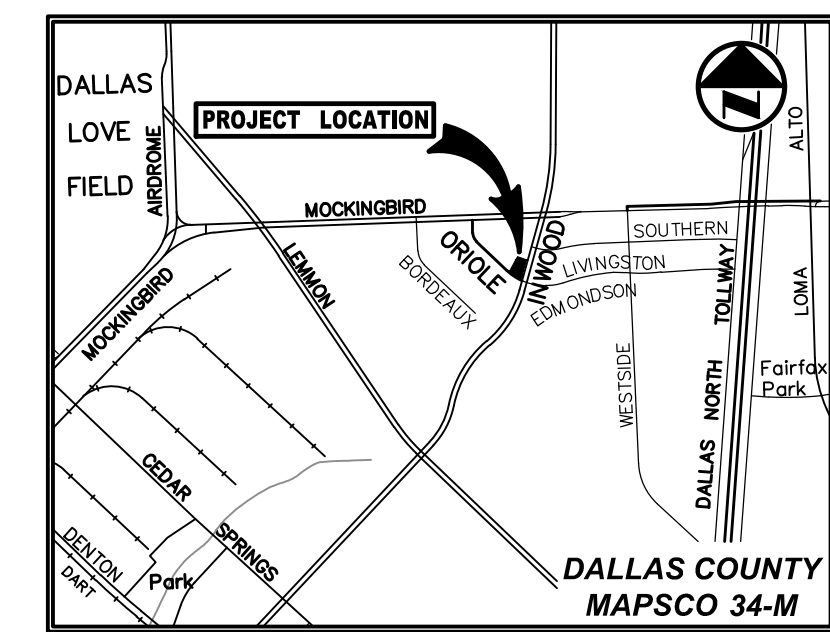
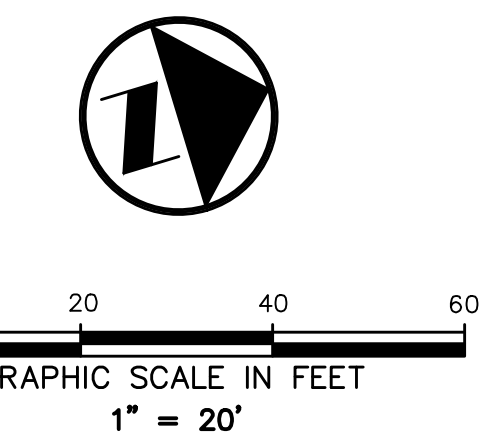


POINT NO.	DESCRIPTION
1231	18" MULTI-TRUNK CREPE MYRTLE
1232	8" MULTI-TRUNK CREPE MYRTLE
1233	15" MULTI-TRUNK CREPE MYRTLE
1259	16" MULTI-TRUNK CREPE MYRTLE
1260	16" MULTI-TRUNK CREPE MYRTLE
1343	4" MULTI-TRUNK CREPE MYRTLE
1373	14" CEDAR
1374	10" MULTI-TRUNK CREPE MYRTLE
1375	8" MULTI-TRUNK CREPE MYRTLE
1376	14" MULTI-TRUNK CREPE MYRTLE
1387	10" MULTI-TRUNK HACKBERRY
1392	12" HACKBERRY
1394	8" HACKBERRY
1402	8" MULTI-TRUNK HACKBERRY
1519	24" MULTI-TRUNK CHINABERRY
1520	16" CEDAR
1525	26" CEDAR
1544	14" CYPRESS
1685	10" CYPRESS
1926	12" HACKBERRY
1927	28" OAK
1928	28" OAK

POINT NO.	DESCRIPTION
1930	16" HACKBERRY
1932	25" MULTI-TRUNK OAK
1933	12" MULTI-TRUNK HOLLY
1934	6" MULTI-TRUNK HOLLY
1935	10" MULTI-TRUNK CREPE MYRTLE
1936	10" MULTI-TRUNK HOLLY
1937	8" HACKBERRY
1938	24" MULTI-TRUNK HACKBERRY
1939	12" PINE
1940	12" PINE
2158	15" HACKBERRY
2163	14" ELM
2223	17" CEDAR ELM
2229	16" CEDAR
2241	12" OAK
2242	16" CEDAR
2260	9" MULTI-TRUNK HOLLY
2283	14" OAK
2295	16" ELM
2309	18" PECAN
2310	20" DOGWOOD



VICINITY MAP  
(NOT TO SCALE)

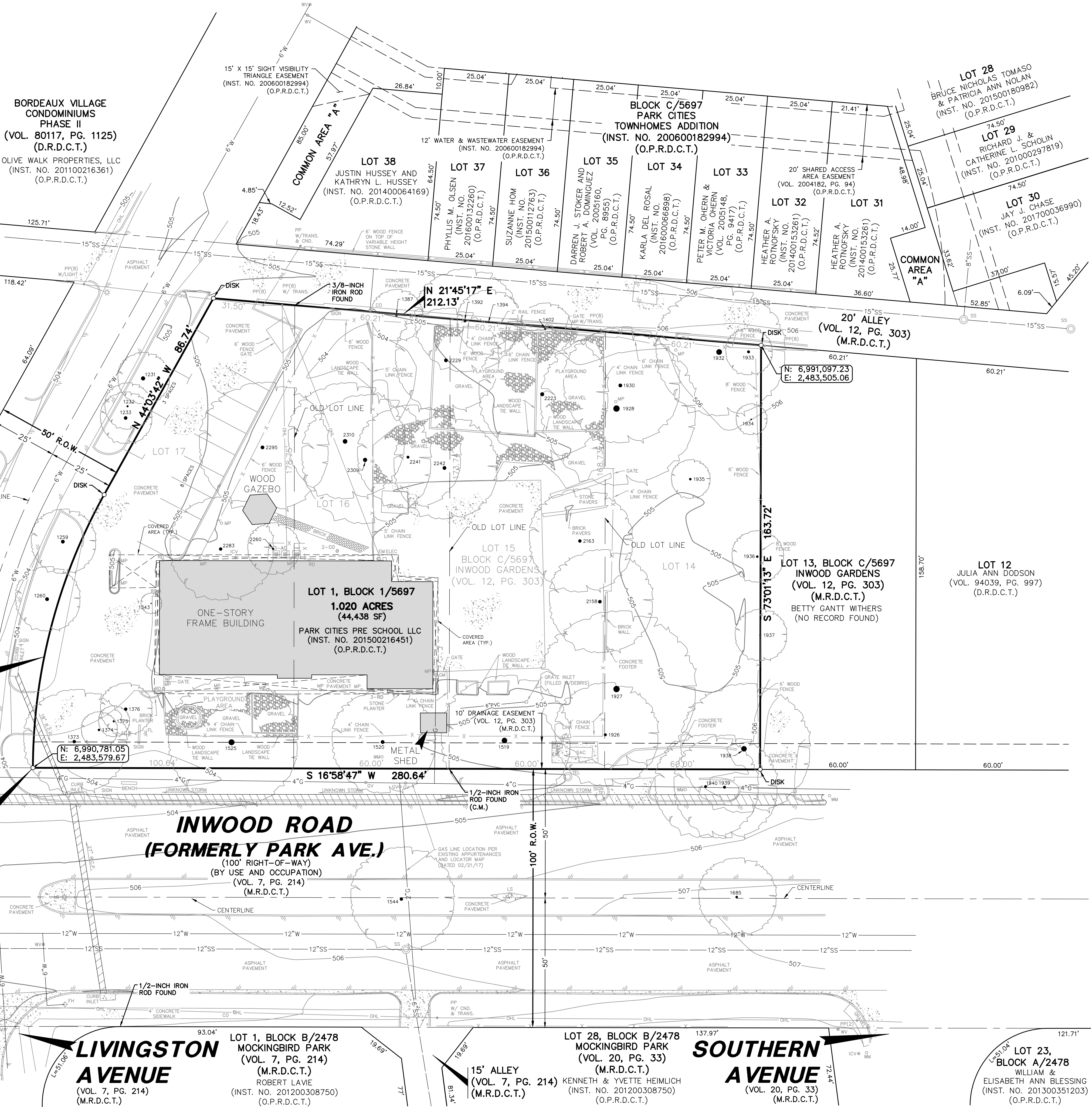


LEGEND

- |  |  |
|--|--|
| AGC A/C UNIT                           | DISK 3 1/4-INCH ALUMINUM DISK                                |
| CO CLEANOUT                            | STAMPED "PACHECO KOCH"                                       |
| ELEC ELECTRIC BOX                      | PS/HP SET  |
| EMR ELECTRIC METER                     | VOL. VOLUME  |
| FH FIRE HYDRANT                        | PG. PAGE   |
| FL FLOOD LIGHT                         | INST. INSTRUMENT   |
| GM GAS METER                           | D.R.D.C.T. DEED RECORDS OF DALLAS COUNTY, TEXAS              |
| GV GAS VALVE                           | O.P.R.D.C.T. OFFICIAL PUBLIC RECORDS OF DALLAS COUNTY, TEXAS |
| ICV IRRIGATION CONTROL VALVE           | M.R.D.C.T. MAP RECORDS OF DALLAS COUNTY, TEXAS               |
| LS LIGHT STANDARD                      | (C.M.) CONTROLLING MONUMENT                                  |
| MP METAL POST                          | PROPERTY LINE  |
| PP POWER POLE                          | EASEMENT LINE  |
| PP W/ LIGHT                            | FENCE  |
| PP(1) PP W/ CROSS ARM (LENGTH IN FEET) | CHL OVERHEAD UTILITY LINE                                    |
| RD ROOF DRAIN                          | GUARD RAIL   |
| SB TELEPHONE SAC BOX                   | UNDERGROUND GAS LINE   |
| SG TRAFFIC SIGN                        | STORM DRAIN LINE   |
| SS SAN SEWER MANHOLE                   | 6" W. WATER LINE   |
| TEL US TELEPHONE MARKER                | 6" SS. SANITARY SEWER LINE                                   |
| TEL TELEPHONE MANHOLE                  | 613 EXIST. CONTOUR   |
| WM WATER METER                         |  |
| WV WATER VALVE                         |  |

**ORIOLE AVENUE (FORMERLY LIVINGSTON AVENUE)**  
(VOL. 12, PG. 303)  
(M.R.D.C.T.)

$\Delta=28^{\circ}51'30"$   
 $R=218.60'$   
 $L=110.10'$   
 $T=56.25'$   
 $CB=N 58^{\circ}32'09" W$   
 $CD=108.94'$



**POINT OF BEGINNING**  
1/2-INCH IRON ROD FOUND (C.M.)

**INWOOD ROAD (FORMERLY PARK AVE.)**  
(100' RIGHT-OF-WAY)  
(BY USE AND OCCUPATION)  
(VOL. 7, PG. 214)  
(M.R.D.C.T.)

**LIVINGSTON AVENUE**  
(VOL. 7, PG. 214)  
(M.R.D.C.T.)

**SOUTHERN AVENUE**  
(VOL. 20, PG. 33)  
(M.R.D.C.T.)

PRELIMINARY PLAT  
**PRIMROSE SCHOOL OF HIGHLAND PARK**  
**LOT 1, BLOCK 1/5697**

BEING A REPLAT OF LOTS 14-17, BLOCK C/5697 INWOOD GARDENS AND BEING OUT OF THE EDWARD W. HUNT SURVEY, ABSTRACT NO. 576, CITY OF DALLAS, DALLAS COUNTY, TEXAS

CITY FILE PLAN NO. S167-260

SHEET 1 OF 2

**Pacheco Koch** 7557 RAMBLER ROAD, SUITE 1400 DALLAS, TX 75231 972.235.3031 TX REG. ENGINEERING FIRM F-14439 TX REG. SURVEYING FIRM LS-10193805

DRAWN BY SBP/CTP	CHECKED BY MCC	SCALE 1"=20'	DATE AUGUST 2017	JOB NUMBER 3899-16.521
------------------	----------------	--------------	------------------	------------------------

SEE SHEET 2 OF 2 FOR OWNER'S DEDICATION AND NOTES

MCCLOVER 7:37 AM K:\VMS-38\3899-16.521\DWG\SURVEY\_C3D\_2015\3899-16.521.PPP.DWG

PRELIMINARY PLAT - PRIMROSE SCHOOL OF HIGHLAND PARK