

Lane Plating Works Superfund Site

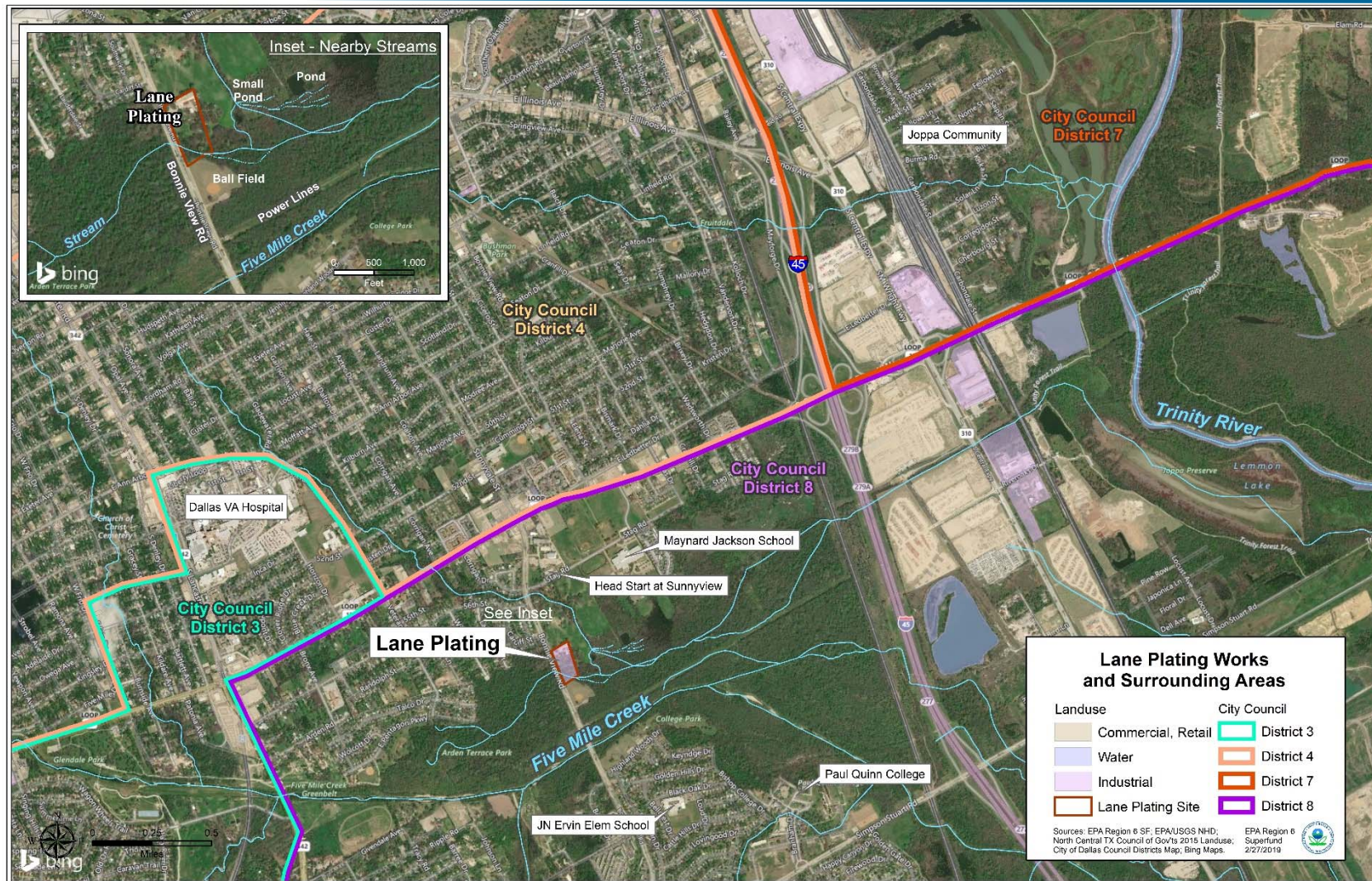


**Community Meeting
March 7, 2019**

U.S. EPA Region 6

Lane Plating Superfund Site

5322 Bonnie View Road in Dallas, TX.



U.S. EPA Region 6



Site History:

- Site is a former electroplating facility that operated for approximately 90 years
- Nov. and Dec. 2015 – TCEQ conducted a limited removal action to secure immediate site hazards
- Feb. 2016 – TCEQ collected groundwater samples from on-site facility wells
- Jan. and Feb. 2016 – Site referred to TCEQ and EPA Superfund/Removals Programs



Preliminary Assessment/ Site Inspection:

- TCEQ Superfund Section performed site assessment activities under a federal EPA grant
- Feb. to May 2016 – Preliminary Assessment (PA)
 - Site reconnaissance and review of available information
- June 2016 to Jan. 2017 – Site Inspection (SI)
 - Collect new information and sampling data



Site Listing to National Priorities List:

- Feb. 2017 to Jan. 2018 – Hazard Ranking System (HRS) package developed and site proposed to National Priorities List (NPL)
 - Site eligible for NPL based on detected levels of metals to the surface water migration pathway
- May 2018 – Site listed on the NPL
- Soil, groundwater, and surface water pathways to be further evaluated under EPA Superfund process



TCEQ Contact

- Rebecca Storms, Superfund
Section Project Manager,
512.239.2466
rebecca.storms@tceq.texas.gov



EPA's Role

- ▶ **Implement the Superfund law which allows EPA to clean up contaminated sites.**

- ▶ **Goals**
 - Protect human health and the environment
 - Involve communities in the process
 - Return sites to productive use



EPA Actions

- ▶ 2016 - TCEQ referred the site to EPA. EPA immediate response to remove surface wastes.
- ▶ 2018 - EPA adds the Site to the National Priorities List to complete the long-term cleanup.
- ▶ 2019 - EPA begins studies for long-term cleanup.



What EPA will study

▶ Soils

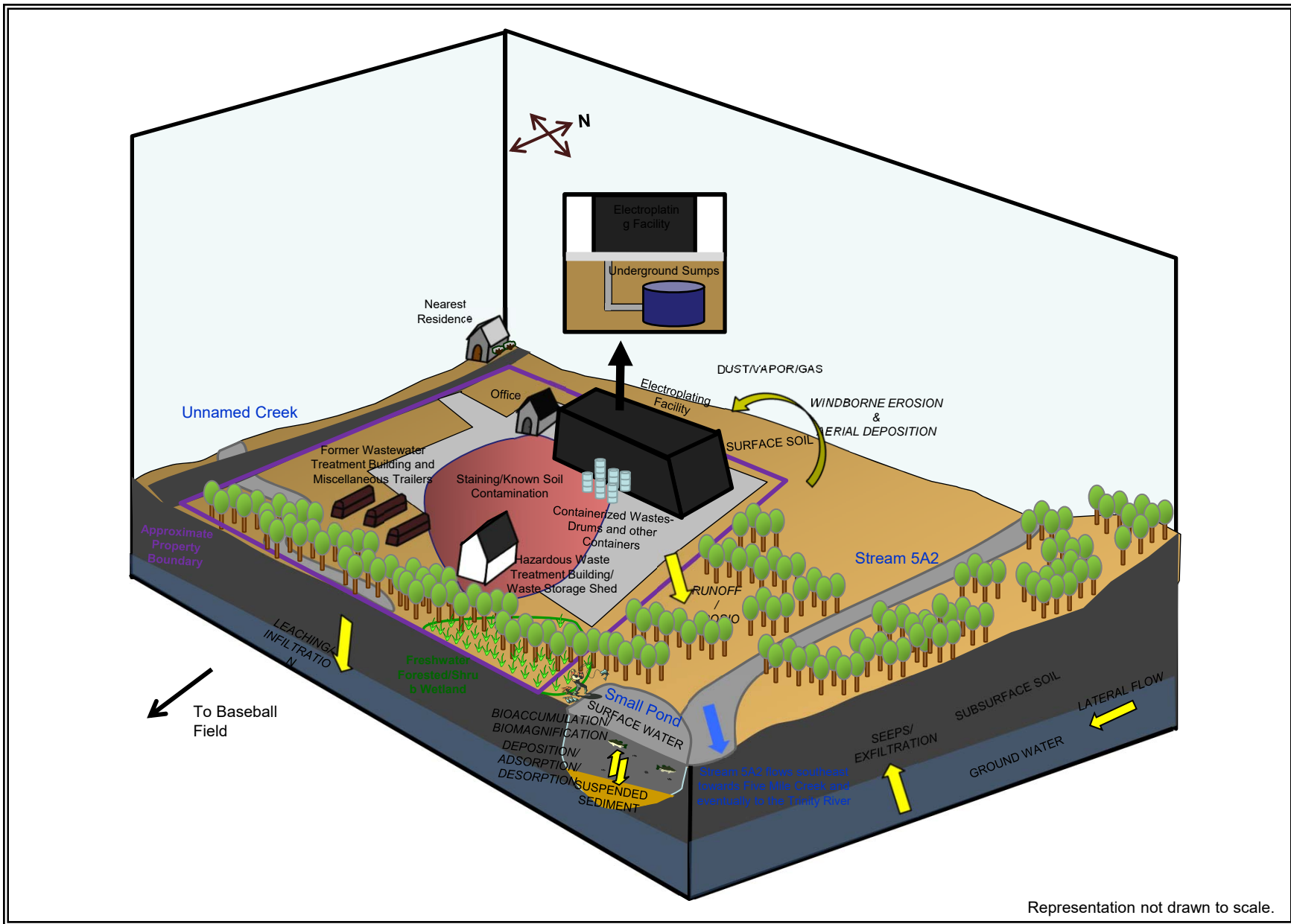
- Contamination from metal plating operations.

▶ Surface Water

- Runoff from the Site into nearby creeks.

▶ Groundwater

- Contamination can seep to groundwater and discharge to surface water.
- **Groundwater is not used for drinking water around the Site.**



Graphical Presentation of the Preliminary Human Health Conceptual Site Model

Priorities

- ▶ **Ensure no current human exposure**
 - Contact with site soils.
 - Contact with surface water.
 - Consumption of groundwater.

- ▶ **Develop long-term cleanup plans**

- ▶ **Engage the community in the solutions**

- ▶ **Implement the cleanup**



What is next?

- ▶ **Install new groundwater wells and sample**
 - Evaluate how contamination can move

- ▶ **Collect additional soils data**
 - Determine depth of soil contamination
 - Sample in areas of surface water runoff

- ▶ **Collect Sediment and Surface Water Samples**
 - Evaluate possible impact from surface water runoff

EPA CONTACTS

- ▶ Kenneth Shewmake - Superfund RPM
214.665.3198, shewmake.Kenneth@epa.gov
- ▶ Edward Mekeel - Community Involvement Coord.,
214.665.2252, mekeel.edward@epa.gov
- ▶ www.epa.gov/superfund/lane-plating.gov

