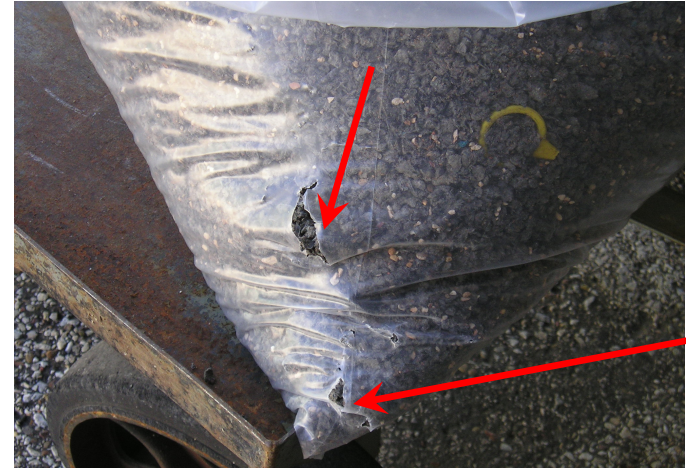




WASTE STORAGE AREA RECEIVING

Inspect each new container of waste for leaks or other signs of damage



Don't Forget - to inspect containers for damage

Conduct a Subpart CC Container Inspection on all waste containers 25 gallons or greater in capacity

Important! - Place leaking and damaged containers into appropriate sized overpack containers



Yes - Place leaking containers into overpack drums

Correctly log, label, and date each new container.

Store new waste properly in the correct location



Don't - Store containers in the wrong place

- Clean up all spills and work area
- Clean all tools used
- Replace tools and unused materials to their proper place



Yes - Clean up all spills

Secure and lock the area when leaving



Don't Forget - to inspect containers for damage



Yes - Place leaking containers into overpack drums



Don't - Store containers in the wrong place



Yes - Clean up all spills