



Community Weekly Update for January 4, January 10, 2014

A Love Note from Me to You...

Dear Neighbors,

Please mark your calendars now for the upcoming LFEAC meeting on January 9, 2014 at 6pm. The meeting will be held at Dallas Love Field in the Administration building located at 7610 Aviation Place Dallas, Texas 75235. We will meet in Conference Room B.

The Dallas Mavericks will have two home games this week on Sunday January 5th and Tuesday January 7th. The Dallas Stars will have one home game this week on Saturday January 4th. Please be advised that there could be an increase in general aviation traffic due to these games.

In an effort to serve you better, Dallas Love Field has opened a new Airport Communication Center (ACC) for your use. The ACC is currently staffed from 5am to 11pm to answer and direct your airport related concerns. Between the hours of 11pm and 5am, all calls will be transferred to the Airport Operations Communication Center. As many of you know, in addition to submitting noise concerns online or directly to me, we also have a noise hotline number. The current noise hotline number will eventually be replaced with the ACC number, 214-670-**LOVE** (5683) so please spread the information to your neighbors and friends!

We are excited about the progress and changes that are taking place here at Dallas Love Field and we want you to be excited as well! If you are interested in some area that we are currently monitoring for our quarterly meetings of the LFEAC or if you have some particular interest in a time frame to be monitored, please let me know and I will try to accommodate that suggestion.

-Ms. Courtenay Shorter

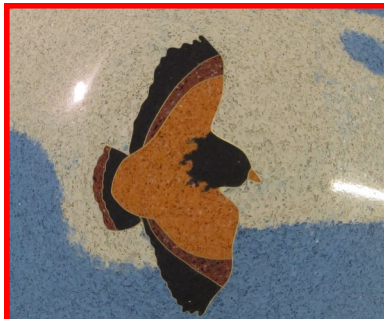
Contents	
Construction Updates	Pg.2
Runway Closures	Pg.2
Airport Diagram	Pg.3
Airport Operations Report	Pg.4 & 5

Want to get involved?

The Love Field Environmental Advisory Committee (LFEAC) meets once every quarter. Please join us for round-table discussion and updates!!!

Upcoming LFEAC Meetings:

- ♦ January 9, 2014
- ♦ April 10, 2014
- ♦ July 10, 2014



"In Flight" by artist Paul Marioni. The art piece above is located on the pedestrian walkway that leads to the parking garage from the main terminal.

For more information and updates about the Love Field Modernization Project (LFMP) please visit: <http://www.lovefieldmodernizationprogram.com/>

Construction Activities

Runway Safety Area (RSA)

The Runway Safety Area (RSA) project has now been completed.

Work continues on taxiways A, B, and D. As work continues along these taxiways, there will be some limitations on the access to the approach ends of RWY 13L/31R (Lemmon).

Taxiway D between Taxiway C and Taxiway P was closed Tuesday May 28, 2013 as work continues for the next phase of the Love Field Modernization Project (LFMP).

This phase of the project is expected to be completed in Spring of 2014 and it includes the demolition of Gates 4 through 15 of the west concourse and the baggage claim wing.

If you would like to learn more about the LFMP please visit:

http://www.dallas-lovefield.com/pdf/LFMP_Newsletter_0412.pdf



Runway Closures

Scheduled Runway Closures for Routine Maintenance

There are no scheduled closures for the upcoming week.

Ongoing Airfield Closures

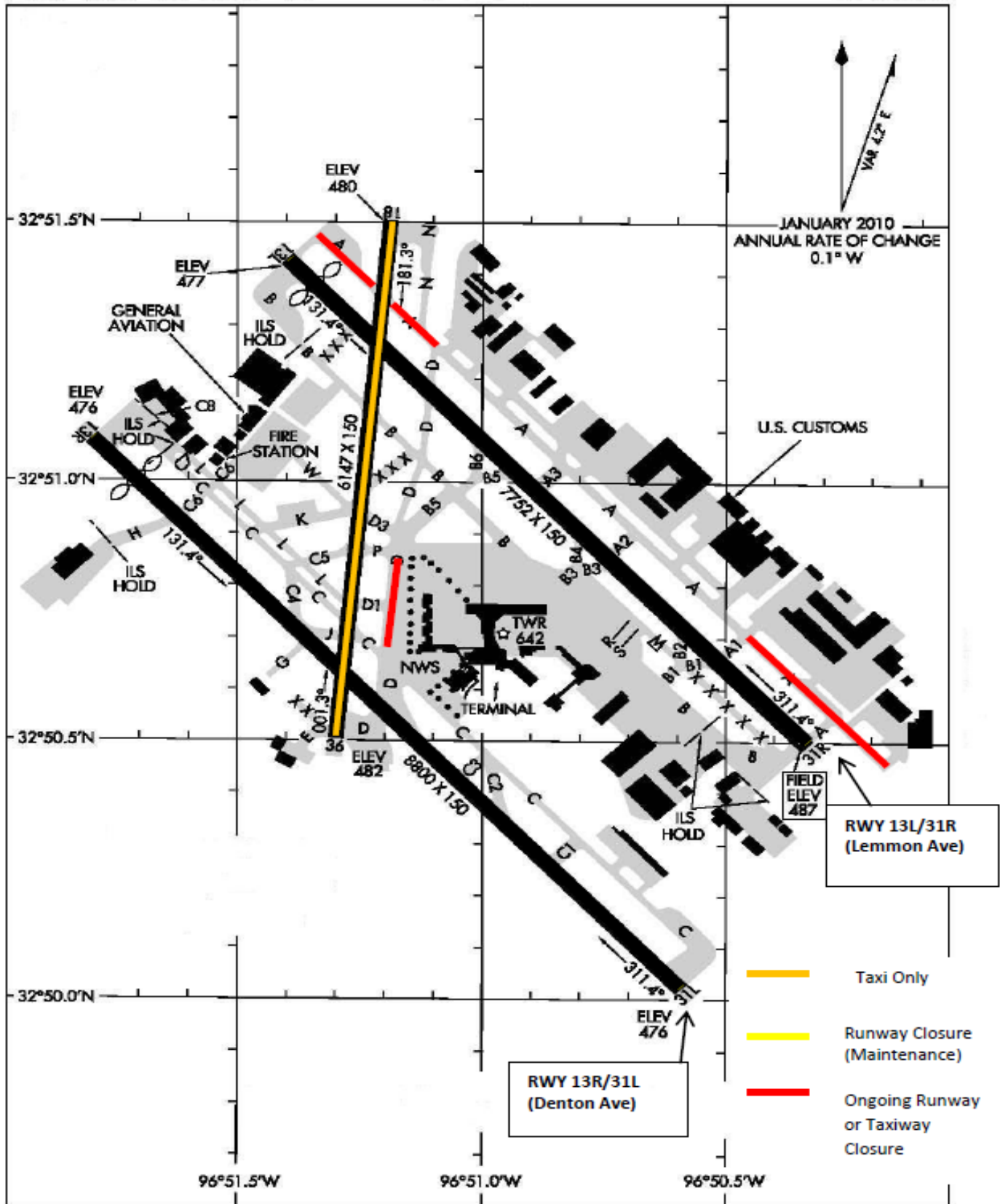
- ◆ RWY 18/36 closed, available for taxiing.
- ◆ TWY D closed from TWY P to TWY C until March 2014.
- ◆ TWY A closed between TWY A1 and the approach end of 31R for 4 months
- ◆ ***The following taxiways will remain closed until further notice:***
 - The West 1300ft of TWY B at the approach end of RWY 13L is closed starting December 2013.
 - The Glideslope is out of service on RWY 13L starting December 2013.
 - TWY A closed 150ft SE at approach end of RWY 31R.
 - TWY C between C2 and D closed to aircraft with wingspan more than 118ft.



****Please see the airport diagram on the next page for the locations of runways and taxiways.***

AIRPORT DIAGRAM

DALLAS-LOVE FIELD (DAL)
DALLAS, TEXAS



AIRPORT DIAGRAM

DALLAS, TEXAS
DALLAS-LOVE FIELD (DAL)

Airport Operations Report

Total Operations for the Week of December 22– December 28, 2013

13L / 31R (Lemmon)

13R / 31L (Denton)

December 22– December 28	Total	Avg per Day		Total	Avg per Day
Arrivals	841	120		Arrivals	62
Commercial	421	60		Commercial	43
GA	223	32		GA	12
Other**	197	28		Other**	7
Departures	710	101		Departures	89
Commercial	258	37		Commercial	65
GA	241	34		GA	13
Other**	211	30		Other**	11

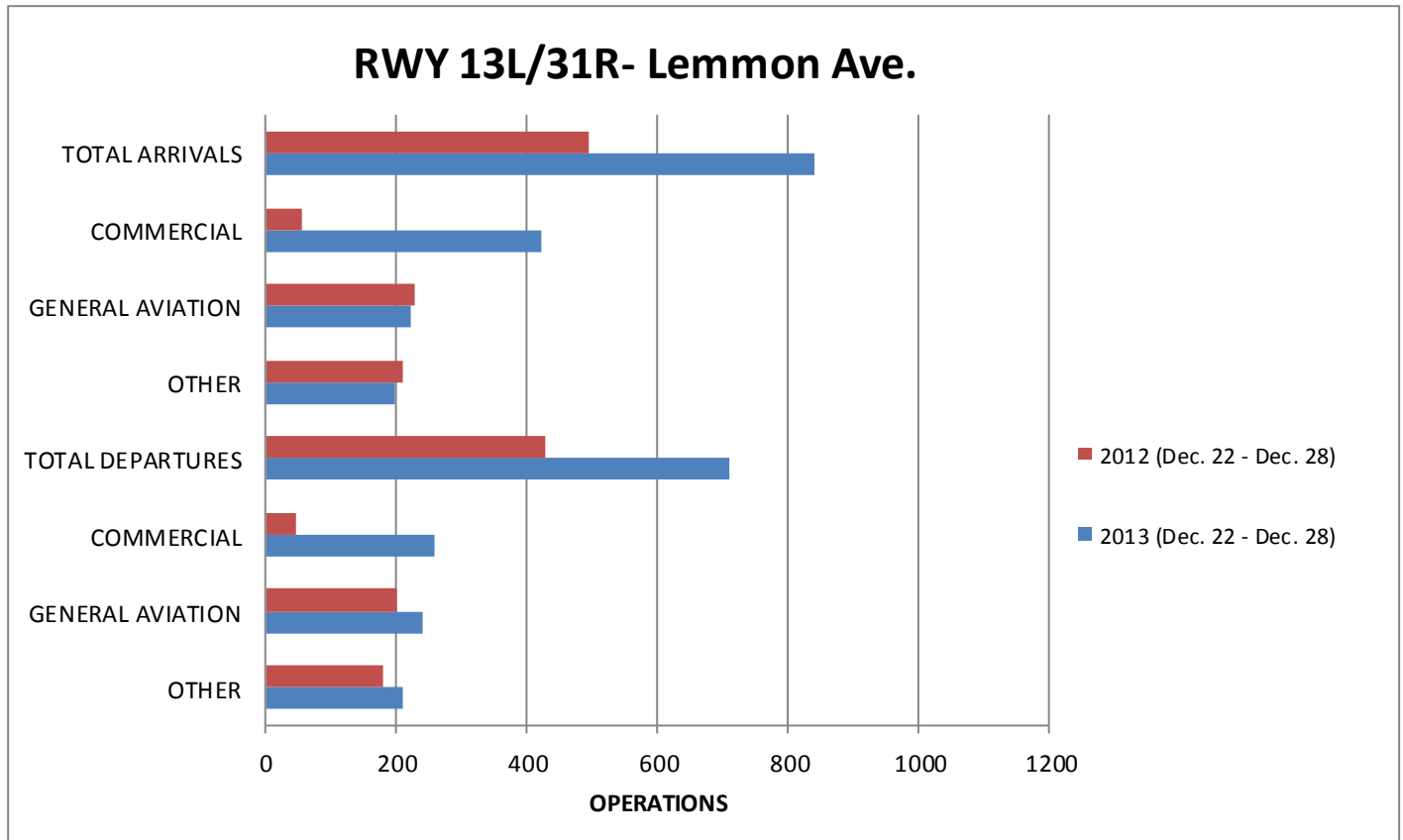
Total Arrivals for the week of December 22– December 28, 2013: 1284*

Total Departures for the week of December 22– December 28, 2013: 1388*

**Total arrival and departure counts include operations that are listed as "unknown" in the system due to radar coverage that doesn't correlate them with a runway in the Noise and Operations Monitoring System.*

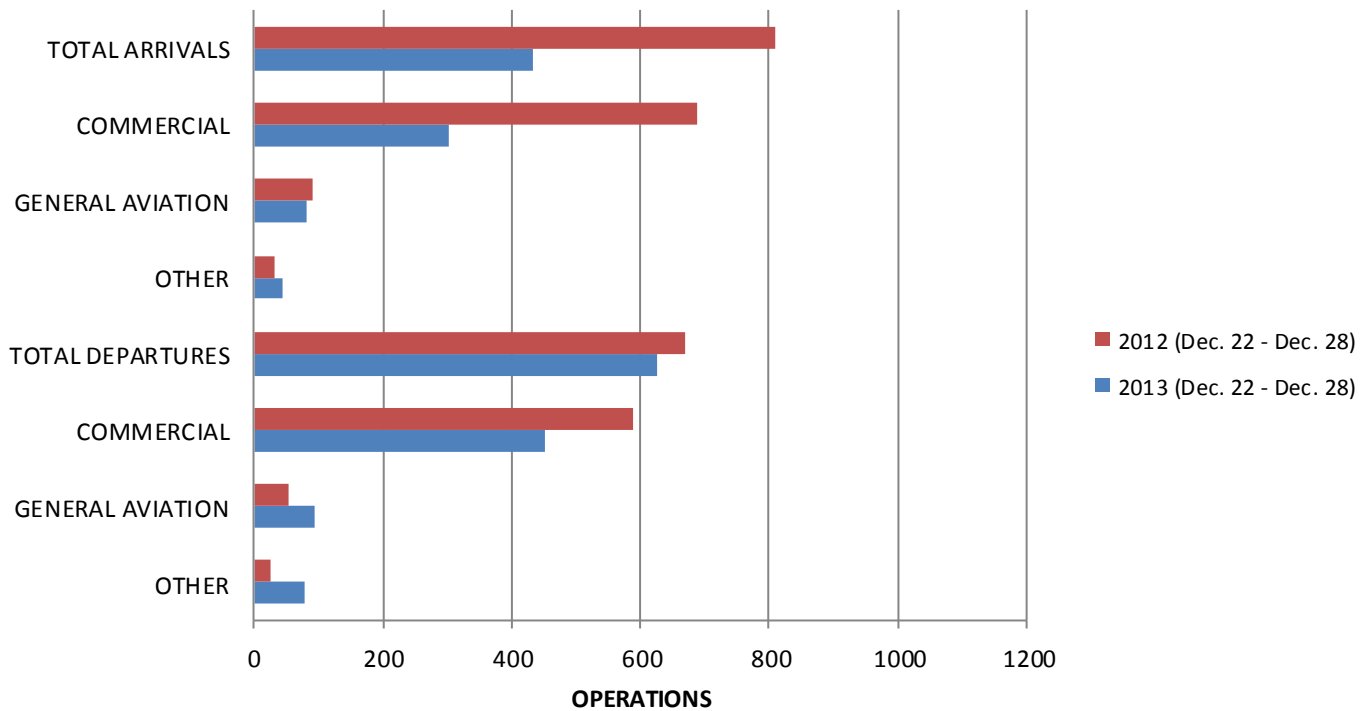
***Aircraft classified as other include military operations, non-scheduled commercial operations such as charter flights/air taxi, and helicopter operations.*

Annual Comparison



Airport Operations Report (Continued)

RWY 13R/31L- Denton Rd.



**Community Weekly Update
January 4– January 10,
2014**

Visit us at
www.dallas-lovefield.com/



DALLAS LOVE FIELD
**AIRPORT
COMMUNICATION
CENTER**

ANSWERING ALL YOUR
QUESTIONS AT LOVE FIELD

EMAIL 214670LOVE@DALLASCITYHALL.COM
PHONE 214-670-LOVE (5683)

For questions or concerns please
contact:

Courtenay Shorter
Aircraft Noise Coordinator
City of Dallas-Department of
Aviation
Phone: 214-670-6673

