



5125 Voyager Dr. • Lock Box 24 • Dallas, TX 75237
Phone: 214.339.3992 • Fax: 214.339.7261

Executive Director
Texas Commission of Environmental Quality
Water Quality Program, MC-148
P.O. Box 13087
Austin, TX 78711-3087

**TPDES Storm Water General Permit No. TX R05Z078
Delegating an "Authorized Representative"**


This letter serves to designate either a person(s) or a specifically described position as an authorized person for signing reports, storm water pollution prevention plans, certifications or other information requested by the Director or required by the permit. This authorization cannot be used for signing a TPDES permit application e.g. Notice of Intent (NOI) in accordance with 30TAC 305.44. The following person(s) is hereby authorized to sign reports, plans, and/or certifications other than the NOI application:

- **Tony Merritt, General Manager**
- **Albert Williamson, Safety and Environmental Representative**
- **Steve Davis, Assistant Manager**

By signing this authorization letter, I confirm that the following requirements have been met by creating such a designation as set forth in either Part III.A.3 (c) of the Texas Multi-Sector General Permit or Part III.E.3 (g) of the Texas Multi-Sector General Permit.

For municipality, state, federal, and/or other public agency, the application shall be signed by either a principal executive officer or a ranking elected official. For purposes of this paragraph, a principal executive officer of a federal agency includes the chief executive officer of the agency, or a senior executive officer having responsibility of the overall operations of principal geographic unit of the agency (e.g., regional administrator of the EPA).

"I certify under penalty of law that this document and all attachments were prepared under my direction and/or supervision, and in accordance with a system assigned to assure that qualified personnel properly acquire and evaluate the information submitted. Based on my inquiry of the person(s) who manage the system, and/or those who are directly responsible for gathering data, and the submitted information is to the best of my knowledge and belief, true, accurate and complete. I am aware of the significant penalties for submitting false information, including the possibility of fine and imprisonment for knowing violations."


Dalton L. Lott
Owner / Jet Center of Dallas
Title *CEO*

February 26, 2010

Date *2/26/2010*



TEXAS COMMISSION ON ENVIRONMENTAL QUALITY
Texas Pollutant Discharge Elimination System
Storm Water Multi-Sector General Permit

The Notice of Intent (NOI) for the facility listed below was received on February 26, 2010. The intent to discharge storm water associated with industrial activity under the terms and conditions imposed by the Texas Pollutant Discharge Elimination System (TPDES) storm water multi-sector general permit TXR05000 is acknowledged. Your facility's TPDES multi-sector storm water general permit number is:

TXR05Z078
Coverage Effective: February 26, 2010

TCEQ's storm water multi-sector general permit requires certain storm water pollution prevention and control measures, possible monitoring and reporting, and periodic inspections. Among the conditions and requirements of this permit, you must have prepared and implemented a storm water pollution prevention plan (SWP3) that is tailored to your industrial site. As a facility authorized to discharge under the storm water multi-sector general permit, all terms and conditions must be complied with to maintain coverage and avoid possible penalties.

PROJECT/SITE:
RN105886732
JET CENTER OF DALLAS
5125 VOYAGER DR
DALLAS, TX 75237
DALLAS County

OPERATOR:
CNG02887814
THE JET CENTER OF DALLAS LLC
5125 VOYAGER DR
DALLAS, TX 75237

This permit expires on August 14, 2011, unless otherwise amended. For additional information, see the TCEQ web site at www.tceq.state.tx.us or contact the Storm Water Processing Team by telephone at (512) 239-3700 or e-mail at swpermit@tceq.state.tx.us. A copy of this document should be kept with your SWP3.

A handwritten signature in black ink, appearing to read "Mark Wiley".

FOR THE COMMISSION

ISSUED: February 26, 2010

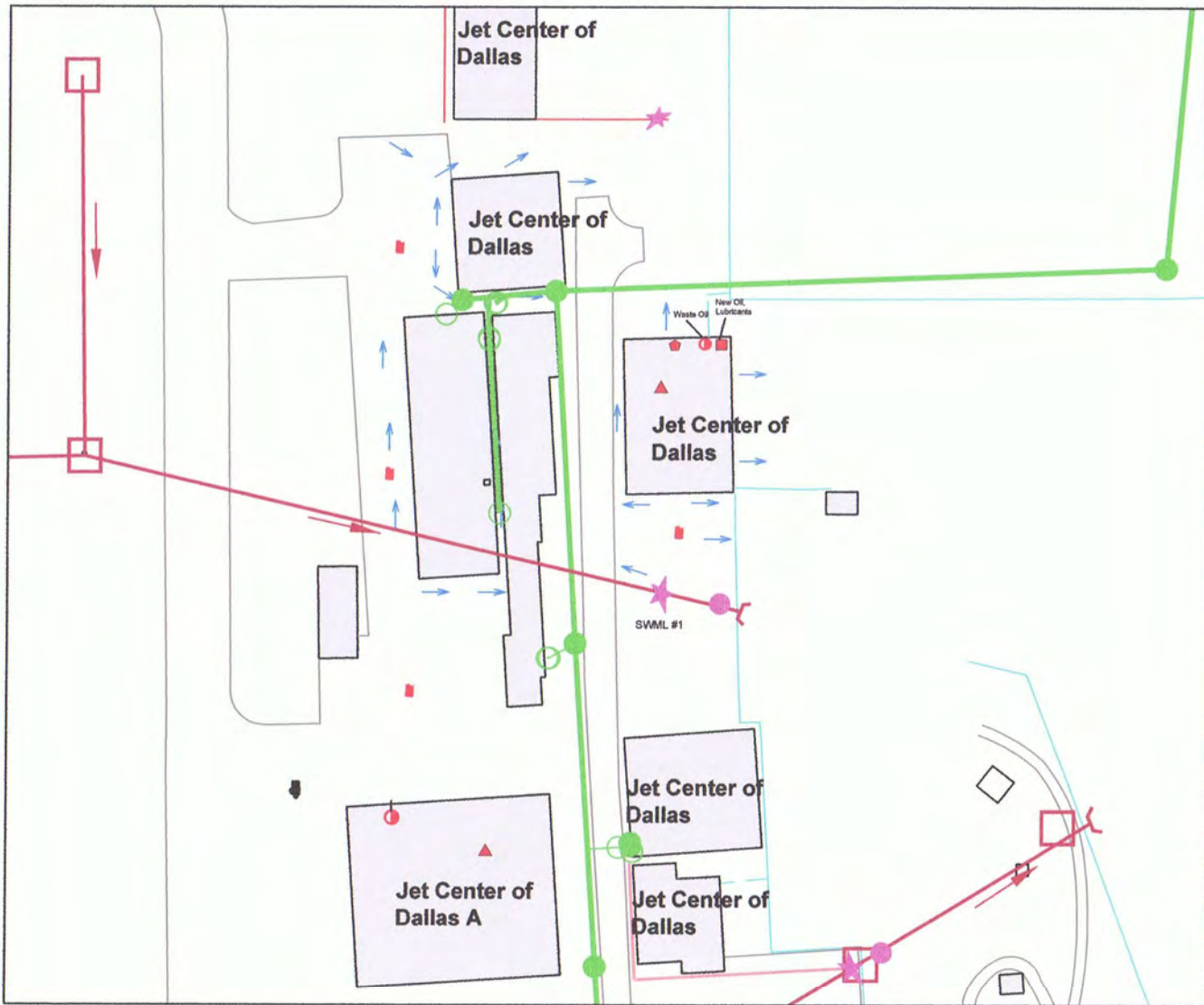
Jet Center of Dallas (SIC 4581)

Jet Center of Dallas is a Fixed-Base Operator (FBO) providing fueling, charter and storage services. Aircraft are dry-washed only inside the hangar. Two underground storage tanks are maintained, one 15,000 gallon tank stocked with Jet-A fuel and the other 10,000 gallon stocked with AvGas. To facilitate fueling, three fuel tankers are kept onsite: two contain Jet-A fuel (5,000 gallon and 3,000 gallon capacity) and the remaining contains AvGas (750 gallon capacity). Spill kits are available on all fuel trucks.

Jet Center, in addition has a fuel farm located at Mariner Drive and Apollo Drive. The fuel farm consists of two above ground storage tanks (AST's) each with a 14,000-gallon capacity, containing Jet-A and Avgas aircraft fuel. The fuel farm is curbed to provide secondary containment up to 14,000 gallons.

Chemical Inventory

<i>Item</i>	<i>Quantity /Where stored</i>	<i>Comments</i>
Waste oil	2 drums/Inside hangar	Removed by waste contractor
Oil	300 quarts/Inside hangar	
AvGas fuel	10,000 gallon UST	
Jet-A fuel	15,000 gallon UST	
AvGas fuel	14,000 gallon AST/fuel farm	
Jet-A fuel	14,000 gallon AST/fuel farm	Fuel Farm is curbed to provide secondary containment to 14,000 gal.

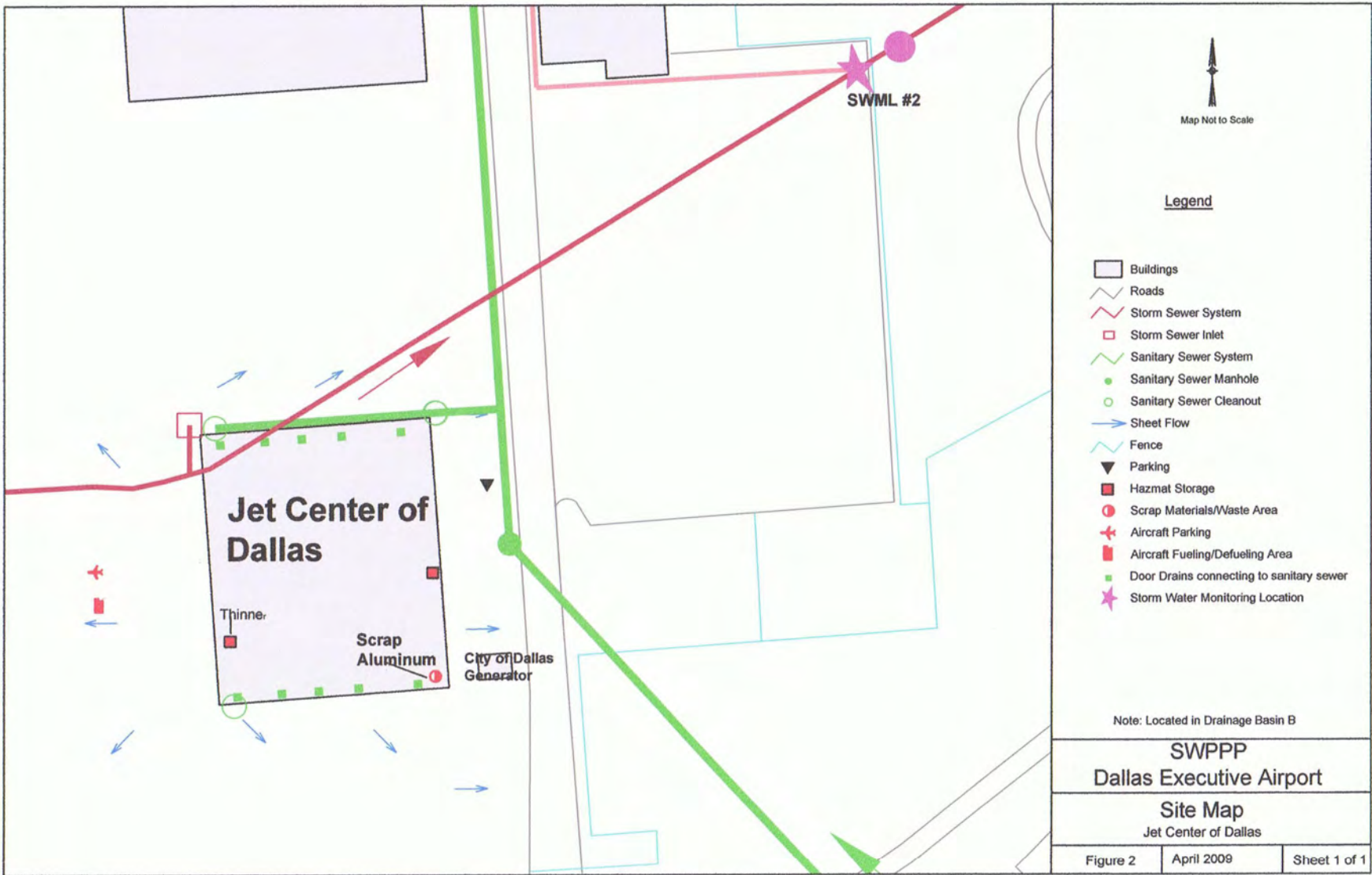


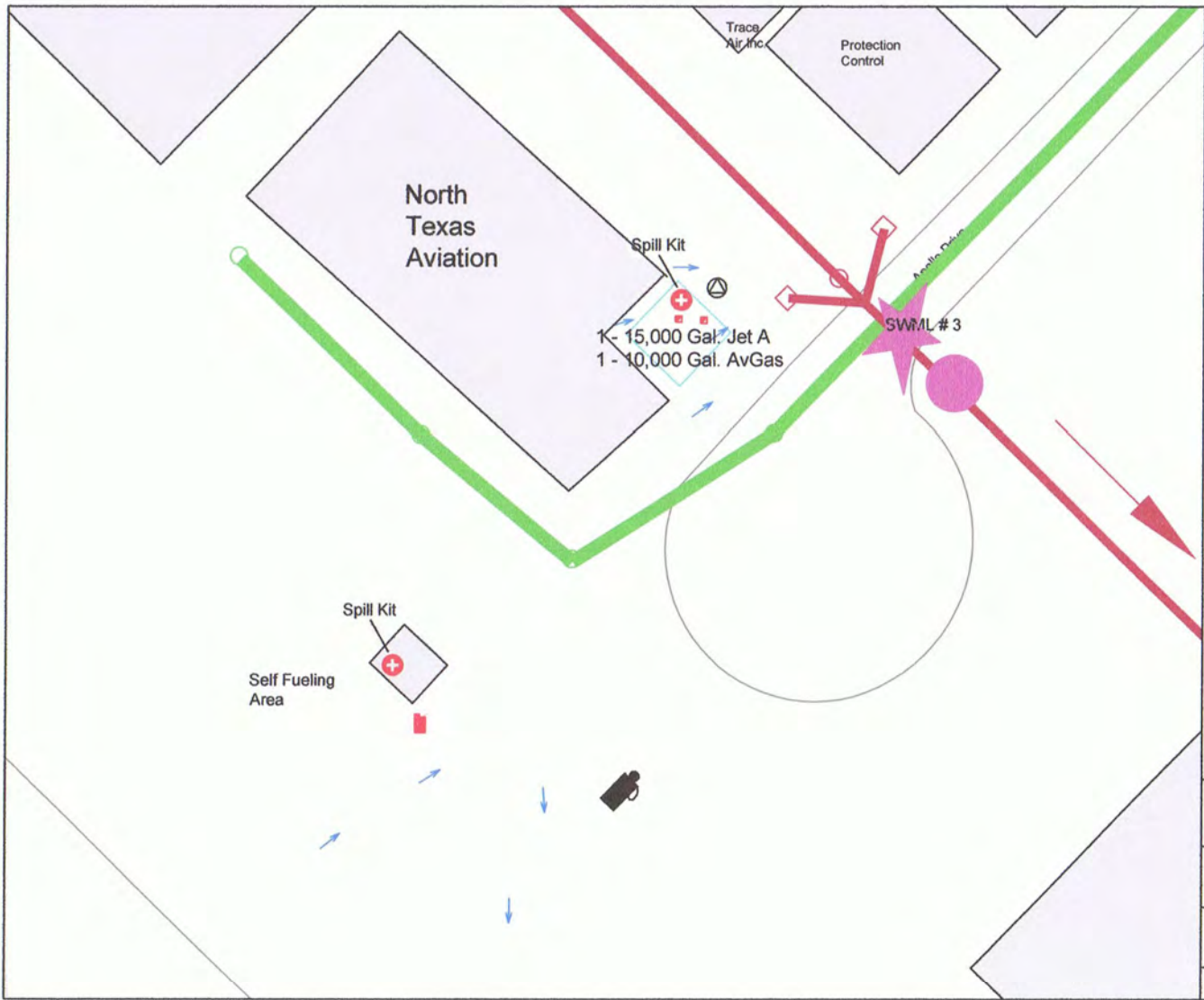
Legend

- Buildings
- Roads
- Storm Sewer System
- Sanitary Sewer System
- Sanitary Sewer Manhole
- Sanitary Sewer Cleanout
- Sheet Flow
- Fence
- Hazmat Storage
- Loading/Unloading Area
- Scrap Materials/Waste Area
- Aircraft Maintenance
- Aircraft Fueling
- Outfall Closure
- Storm Water Monitoring Location

Note: Located in Drainage Basin B

SWPPP
Dallas Executive Airport
Site Map
 Jet Center of Dallas





Map Not to Scale

Legend

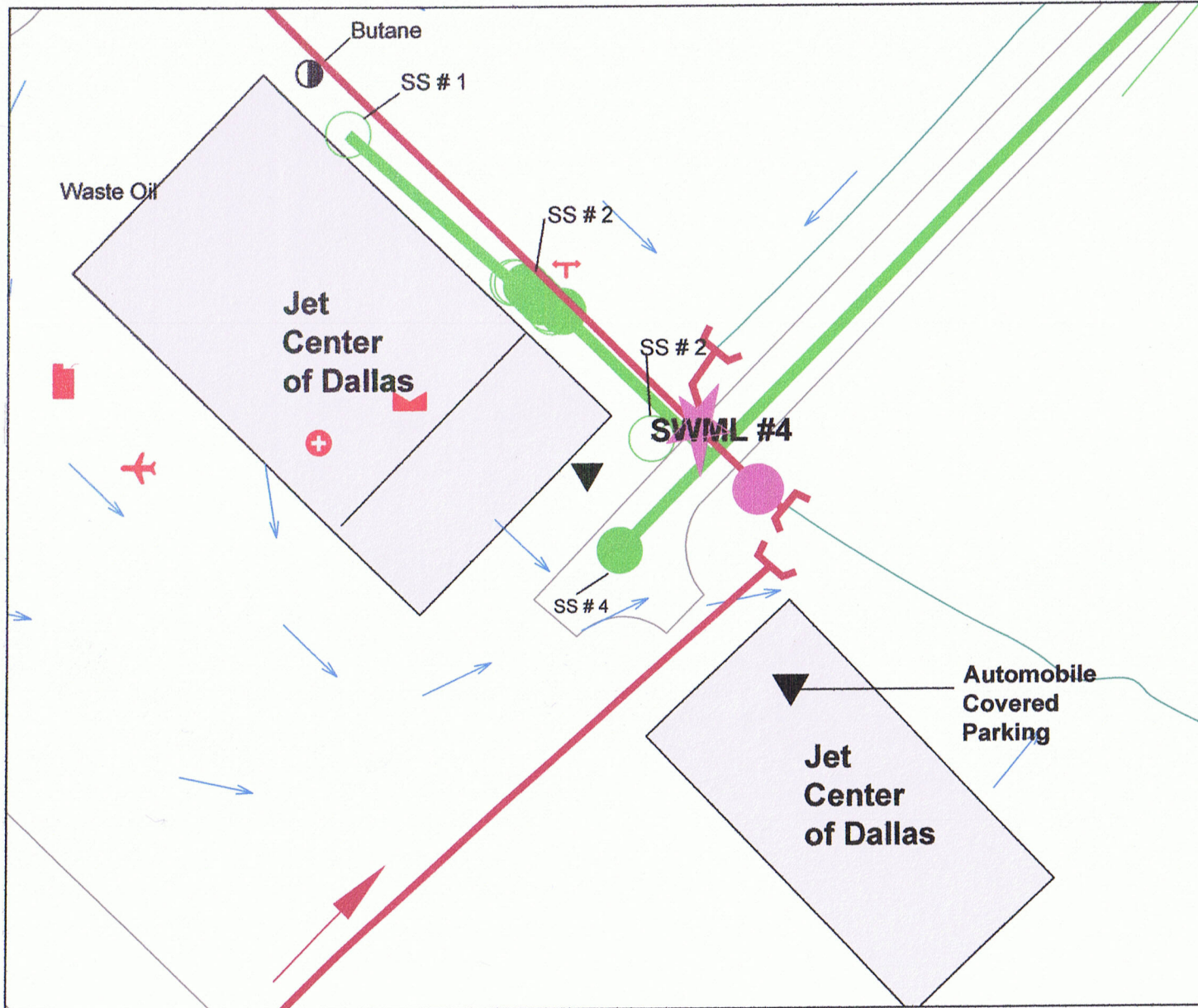
- Buildings
- Roads
- Storm Sewer System
- Storm Sewer Inlet
- Storm Sewer Manhole
- Sanitary Sewer System
- Sanitary Sewer Manhole
- Sanitary Sewer Cleanout
- Fence
- Sheet Flow
- Underground Storage Tank (UST)
- Ground Vehicle Fueling/Dispensing
- Spill Response Equipment
- Aircraft Fueling/Defueling Area
- Curb
- Outfall Closure Device
- Fuel Truck Parking

Note: Located in Drainage Basin D

SWPPP
Dallas Executive Airport
Site Map
 Jet Center of Dallas C

TurnerCollie & Braden Inc.
 Engineers • Planners • Project Managers

Figure 6c	April 2009	Sheet 3 of 3
-----------	------------	--------------



Legend

Map Not to Scale

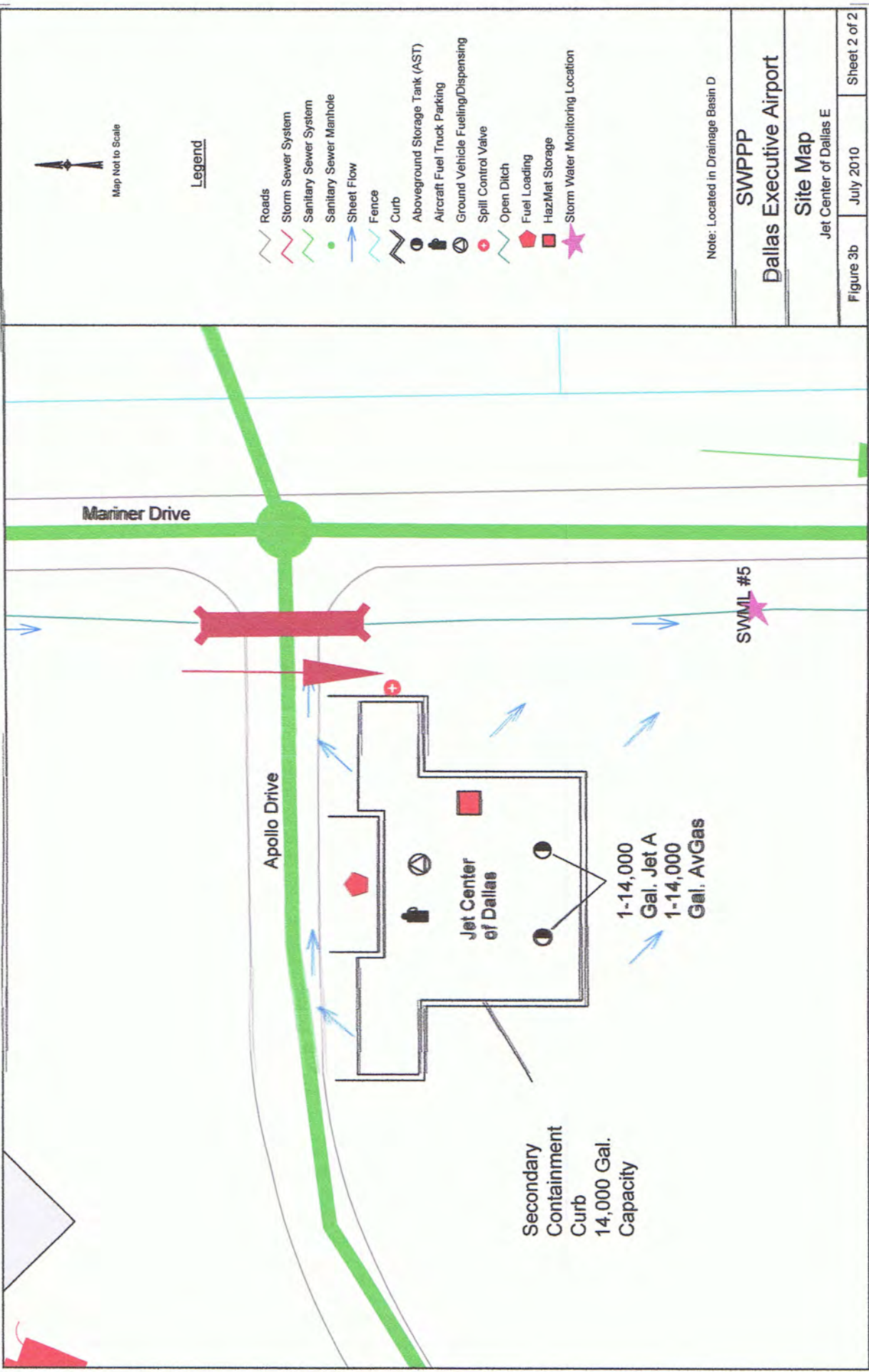
- Buildings
- Roads
- Storm Sewer System
- Storm Sewer Inlet
- Storm Sewer Manhole
- Sanitary Sewer System
- Sanitary Sewer Manhole
- Sanitary Sewer Cleanout
- Inlet connected to Sanitary Sewer
- Sheet Flow
- Fence
- Parking
- Aircraft Fueling/Defueling Area
- Aircraft Parking
- Aboveground Storage Tank (AST)
- Waste Treatment
- Spill Response Equipment
- Open Ditch
- Aircraft Fuel Truck Parking
- Scrap Materials/Waste Area
- Aircraft Washing
- Outfall Closure Device/Stormceptor
- Storm Water Monitoring Location

Note: Located in Drainage Basin D

SWPPP
Dallas Executive Airport

Site Map
Jet Center of Dallas D

Figure 3a	August 2010	Sheet 1 of 2
-----------	-------------	--------------



Map Not to Scale

Legend

- Roads
- Storm Sewer System
- Sanitary Sewer System
- Sanitary Sewer Manhole
- Sheet Flow
- Fence
- Curb
- Aboveground Storage Tank (AST)
- Aircraft Fuel Truck Parking
- Ground Vehicle Fueling/Dispensing
- Spill Control Valve
- Open Ditch
- Fuel Loading
- HazMat Storage
- Storm Water Monitoring Location

Note: Located in Drainage Basin D

SWPPP
Dallas Executive Airport

Site Map
Jet Center of Dallas E

Figure 3b

July 2010

Sheet 2 of 2



Map Not to Scale

Legend

- Buildings
- Roads
- Storm Sewer System
- Storm Sewer Inlet
- Concrete Ditch
- Sanitary Sewer System
- Sanitary Sewer Manhole
- Sanitary Sewer Cleanout
- Sheet Flow
- Fence
- Parking
- Hazmat Storage
- Underground Storage Tank (UST)
- Equipment Storage
- Dumpster
- Runway Sand Storage
- Empty Drums/Tanks
- Ground Vehicle Fueling/Dispensing
- Aircraft Fueling/Defueling Area

Note: Located in Drainage Basin B

SWPPP

Dallas Executive Airport

Site Map

Jet Center of Dallas F

Exhibit 2b

July 2010

Sheet 2 of 2

