

Memorandum



CITY OF DALLAS

DATE August 12, 2010

TO Trinity River Corridor Project Committee Members:
David A. Neumann (Chairman) Vonciel Jones Hill
Steve Salazar (Vice-Chair) Delia Jasso
Mayor Pro Tem Dwaine Caraway Linda Koop
Deputy Mayor Pro Tem Pauline Medrano
Carolyn R. Davis

SUBJECT **MLK Boulevard Gateway**

At the next Trinity River Corridor Project Committee meeting on August 17, 2010, the attached briefing will be presented by David Whitley and Brent Brown from the Dallas CityDesign Studio. This briefing provides an update on Martin Luther King, Jr. Boulevard Gateway.

Please contact me if you have questions.

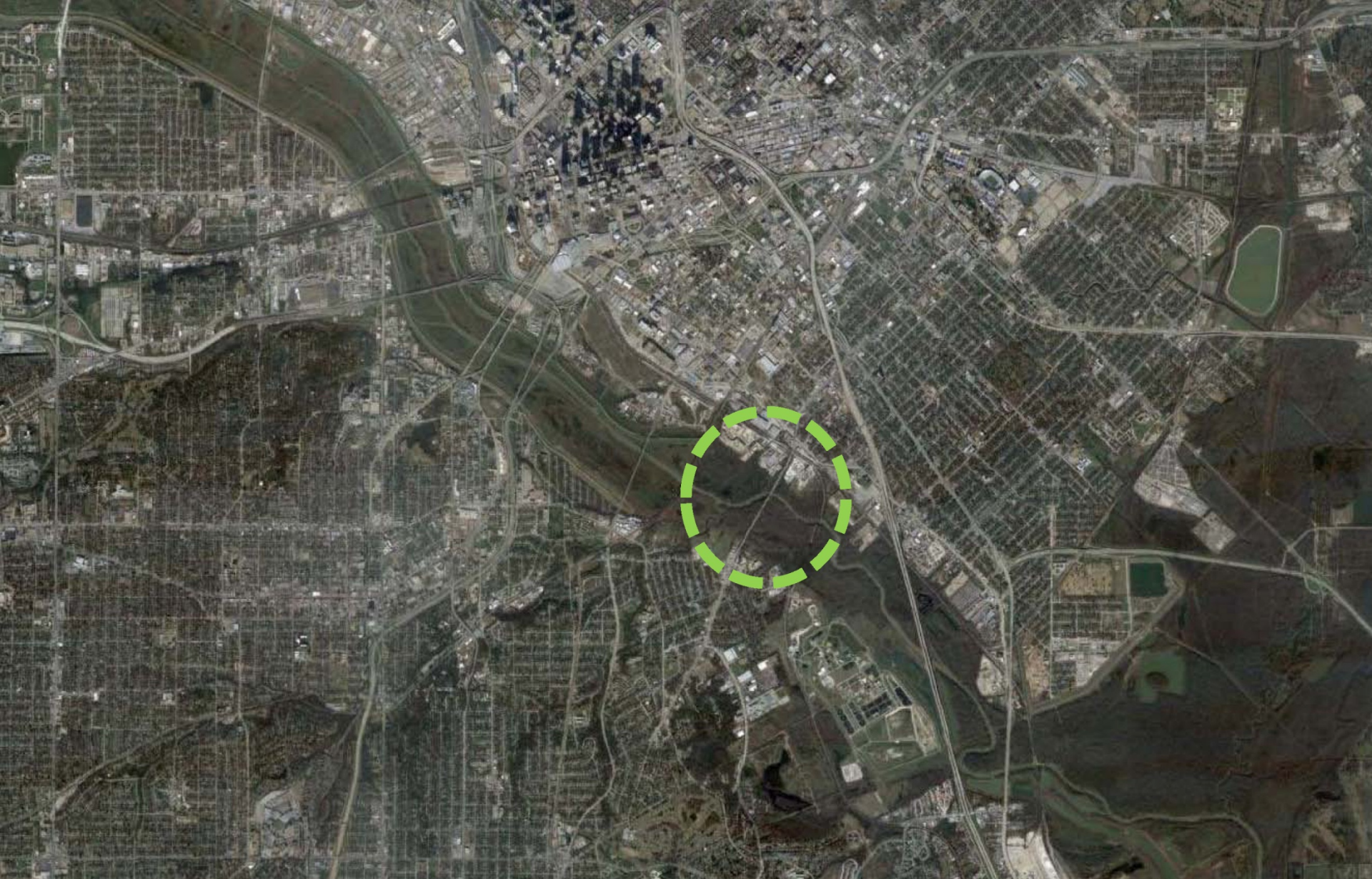
Jill A. Jordan, P.E.
Assistant City Manager



THE TRINITY
DALLAS

Attachment

C: Honorable Mayor and Members of the City Council
Mary K. Suhm, City Manager
Ryan S. Evans, First Assistant City Manager
A.C. Gonzalez, Assistant City Manager
Forest E. Turner, Assistant City Manager
Jeanne Chipperfield, Chief Financial Officer
Deborah A. Watkins, City Secretary
Thomas P. Perkins, Jr., City Attorney
Craig D. Kinton, City Auditor
Judge C. Victor Lander
Helena Stevens-Thompson, Assistant to the City Manager
Frank Libro, Director, Public Information Office
Kelly High, Director, Trinity Watershed Management
Rebecca Rasor, P.E., Managing Director, Trinity River Corridor Project



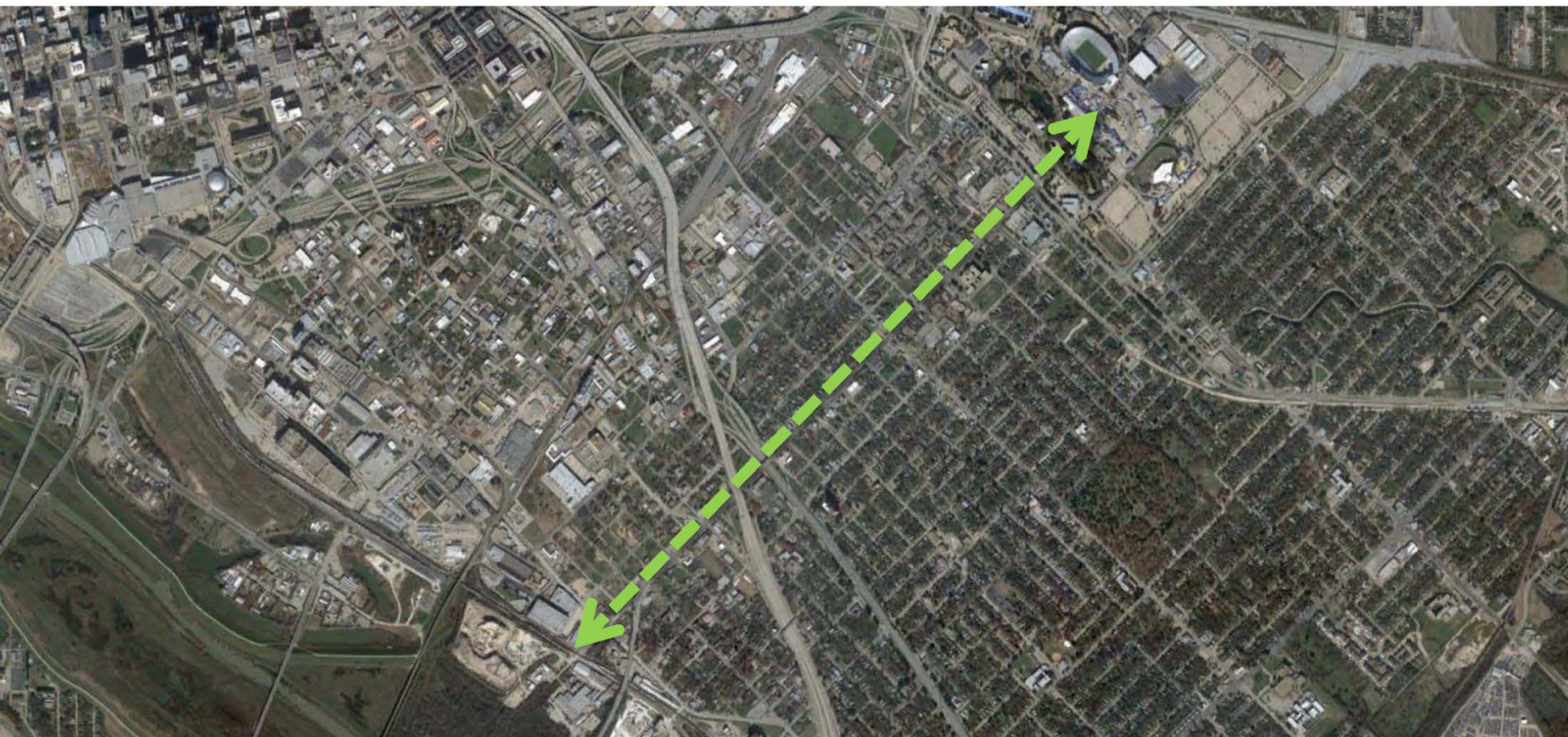
MLK BOULEVARD GATEWAY

trinity river corridor project committee 08.17.10

mlk corridor functions as a significant spine for the south dallas community
and functions as a cultural and historical center

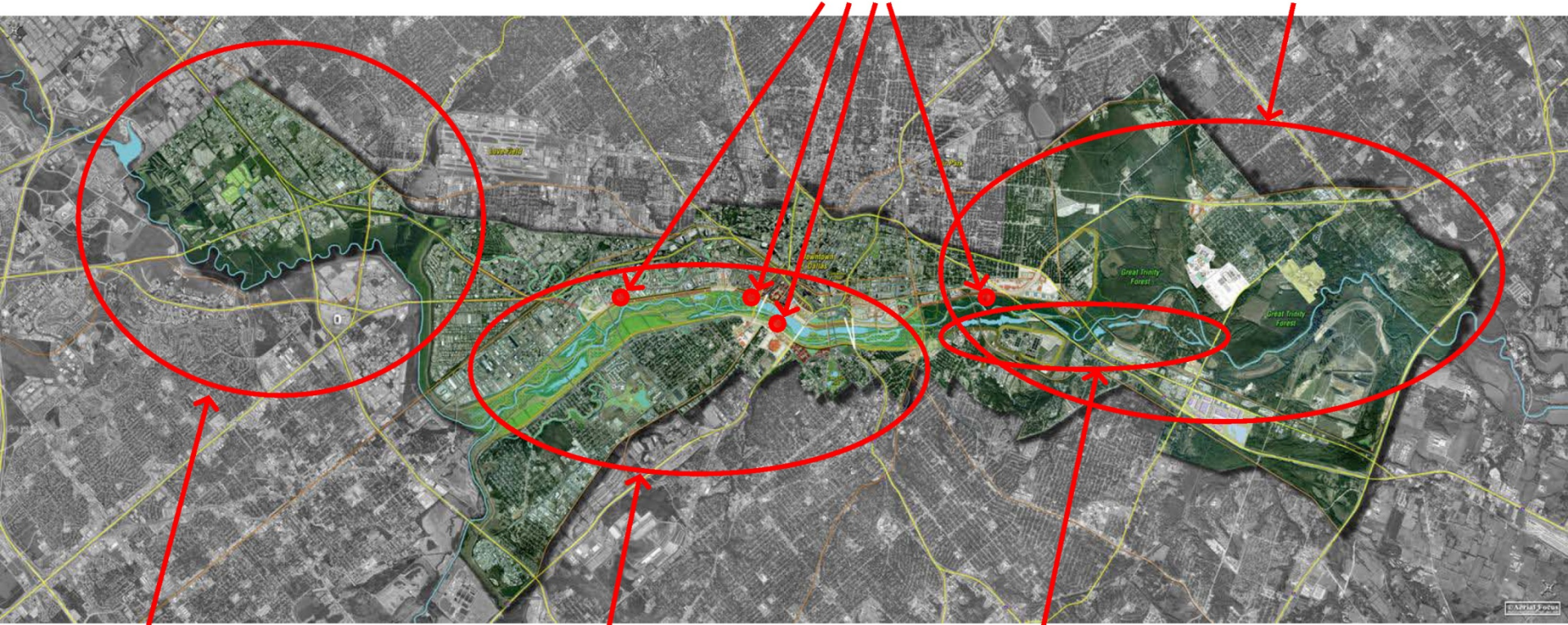
several key trinity-related projects will strengthen the boulevard's role
in connecting the trinity corridor with the community and key assets such as fair park

1998 bond money [\$2.8M] represents an opportunity to highlight the area's history and
improve access to recreational amenities offered in the trinity corridor



Transportation \$118M

Great Trinity Forest \$71.3M

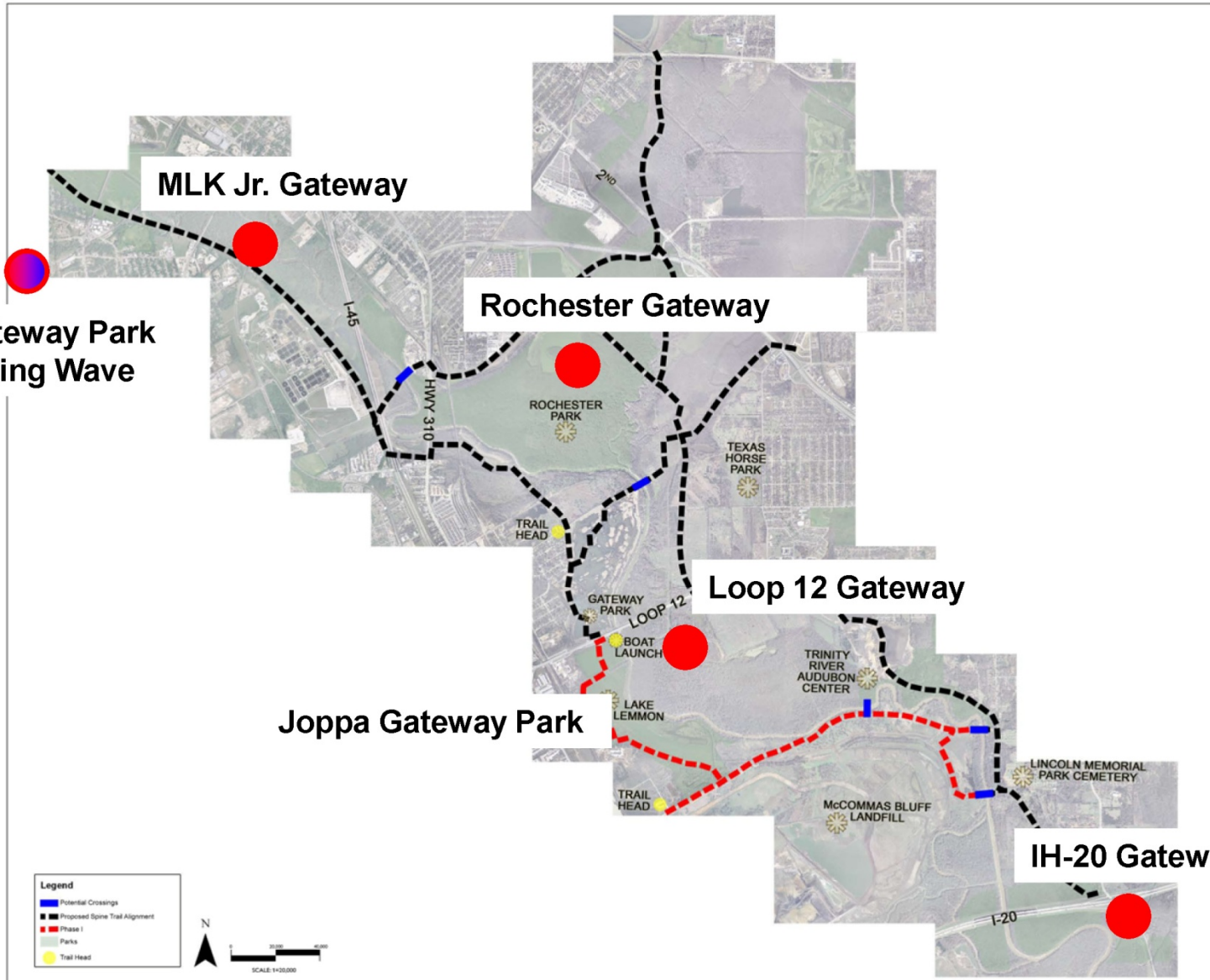


**Elm Fork Flood
Improvements & Recreation
\$30M**

Lakes \$31.5M

**Dallas Floodway
Extension \$24.7M**

Moore Gateway Park and Standing Wave



Legend

- Potential Crossings
- Proposed Spine Trail Alignment
- Phase I
- Parks
- Trail Head



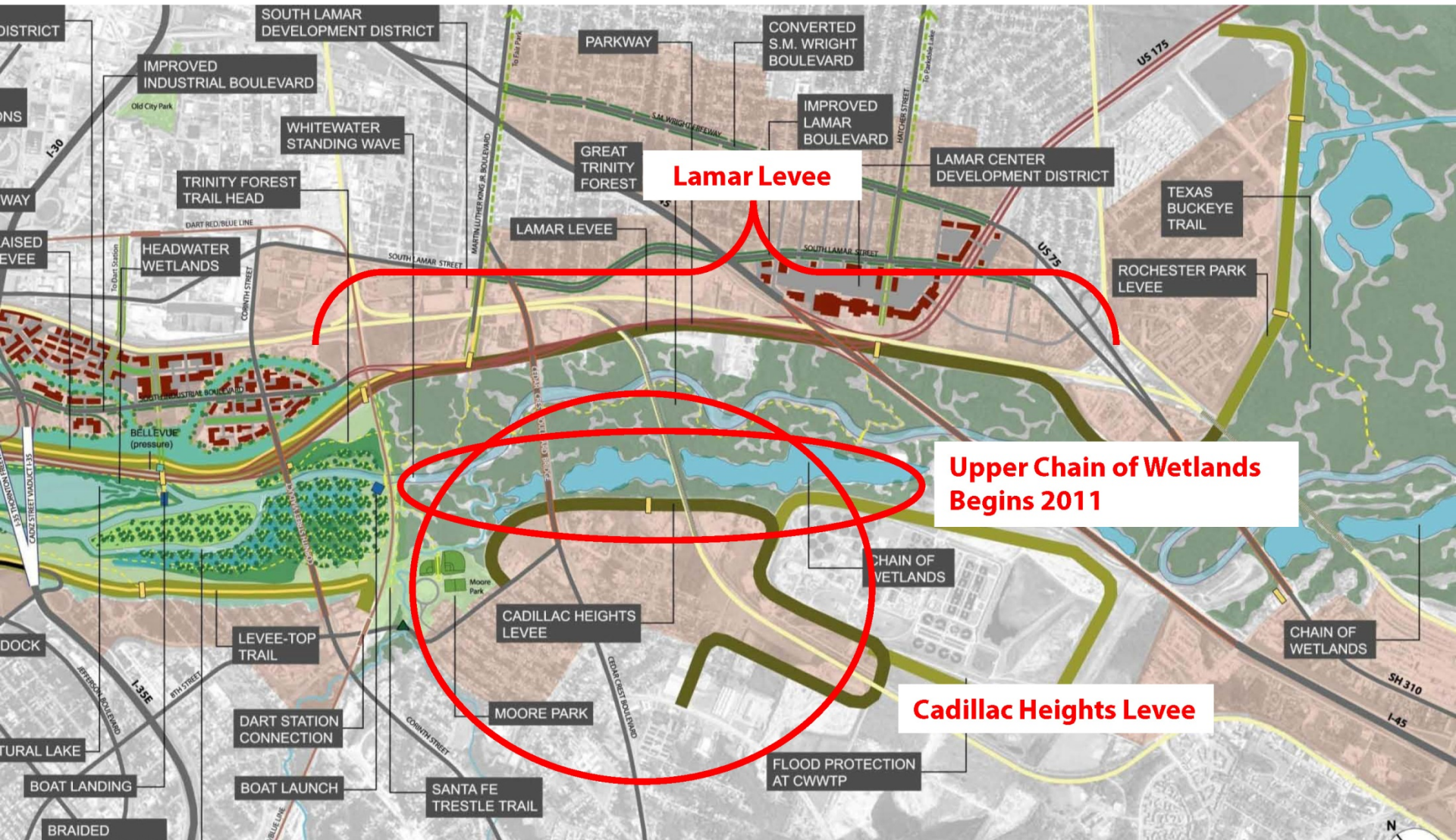
THE GREAT TRINITY FOREST PROPOSED SPINE TRAIL ALIGNMENT

JANUARY 10, 2007

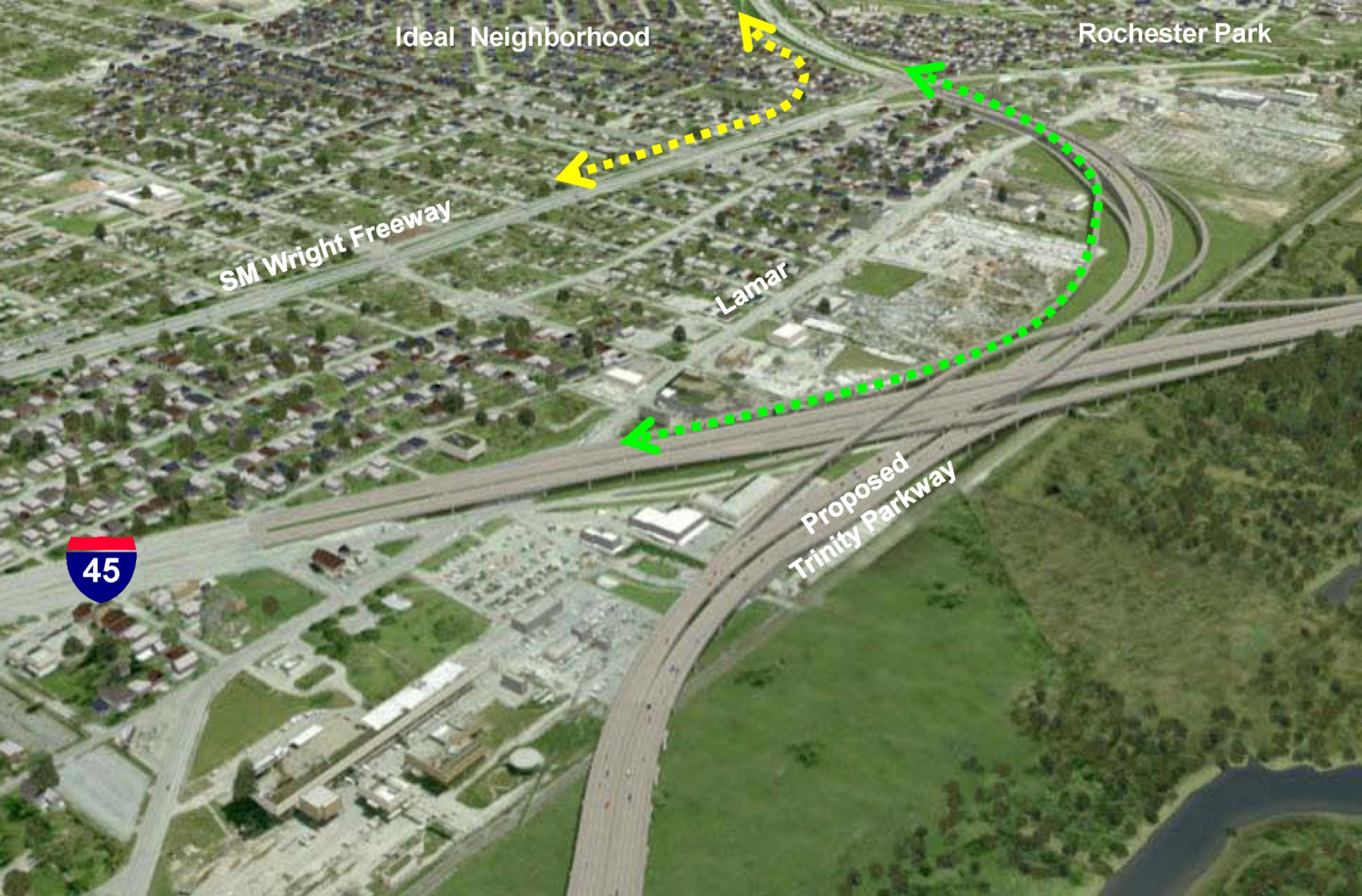
gateway park locations

Upper Chain of Wetlands construction starts early 2011

All work complete in 2014



future work: dfe and wetlands



Ideal Neighborhood

Rochester Park

SM Wright Freeway

Lamar

Proposed Trinity Parkway



trinity parkway and s.m. wright



City of Dallas

Trinity Parkway connection to IH-45 eliminates need for “Dead Man’s Curve” at US 175 and S.M. Wright

Provides opportunity to make S.M. Wright a low-speed road

Pedestrian crossings, sidewalks, landscaping

TxDOT will spend approximately \$200M for improvements to Trinity Parkway and SM Wright Parkway



s.m. wright parkway



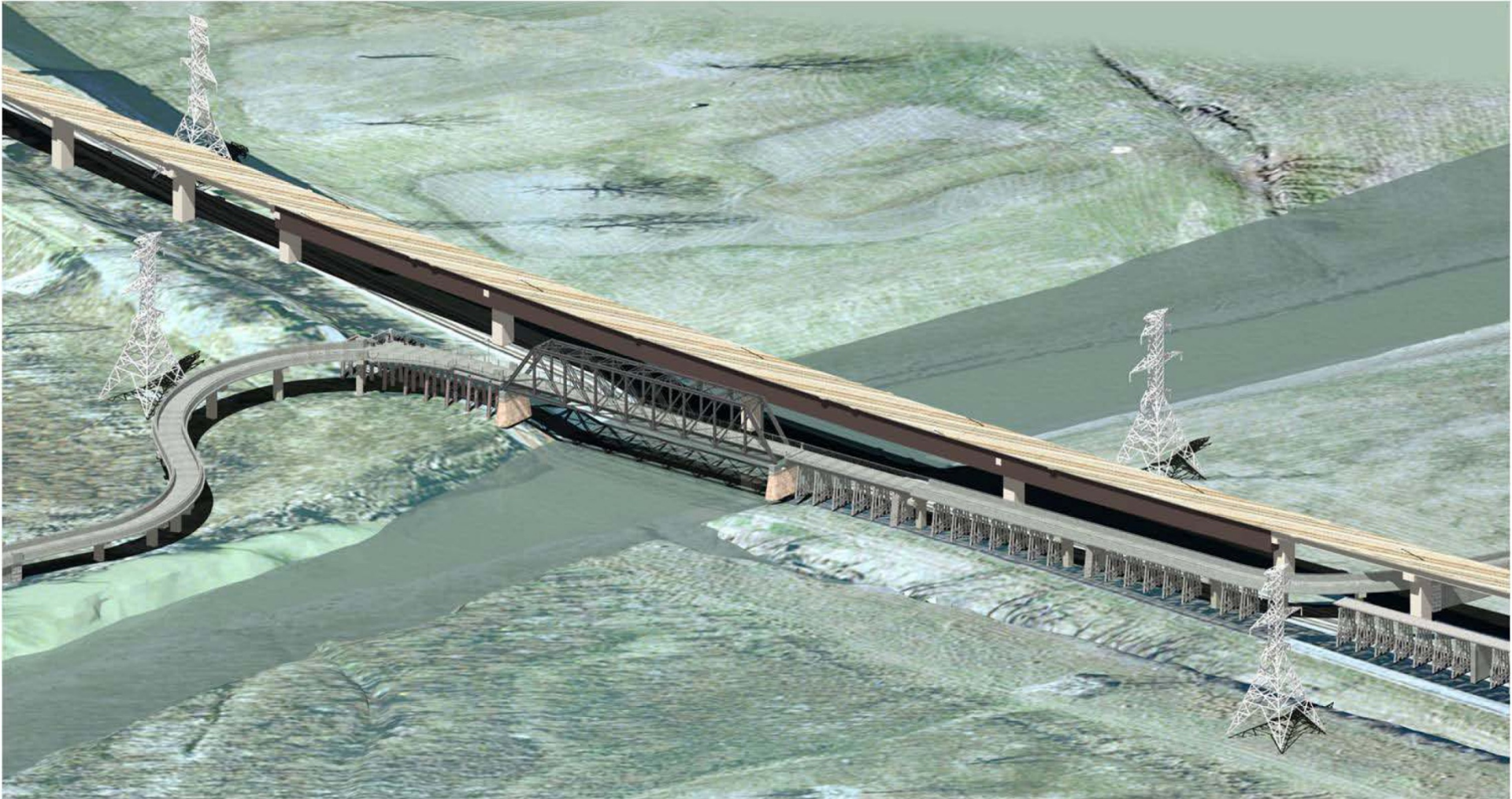
- Pavilion
- Entry plaza
- Landscaping
- Creek overlook
- Pedestrian bridge
- Expanded parking
- Amphitheater

moore park gateway



standing wave @ moore park gateway

estimated completion december 2012
connects the east levee with moore park and the standing wave



santa fe trestle trail

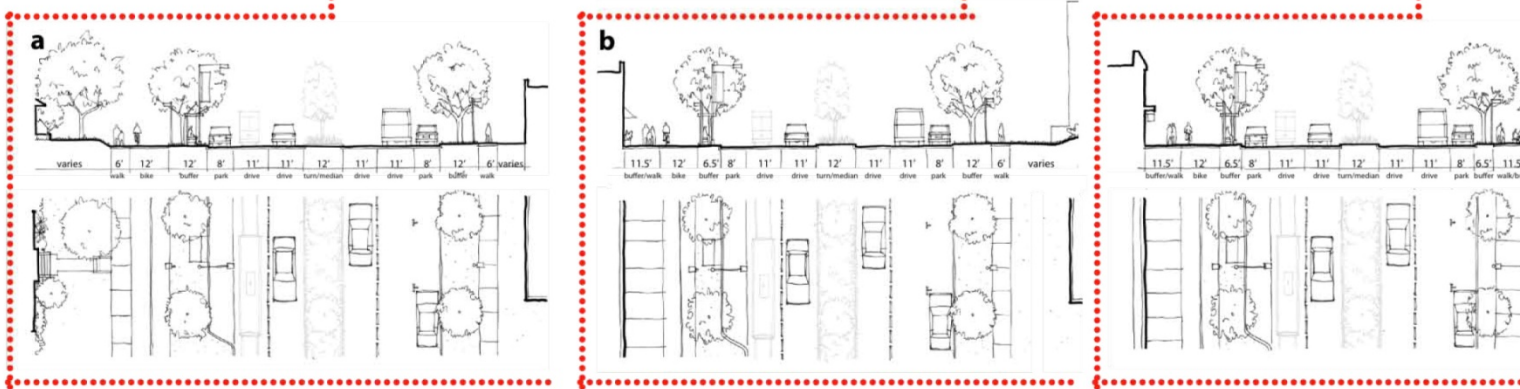
martin luther king jr boulevard citydesign

boulevard concept



recommended next steps:

- .01 improve safety for all travelers
- .02 comprehensive circulation/parking analysis
- .03 reduce/consolidate curb-cuts w/o negative impact to businesses
- .04 add/enhance on-street parking
- .05 reduce crossing distances/add bulb-outs
- .06 enhanced intersections at gateways
- .07 add medians with low maintenance plants
- .08 enhance existing street trees w/ regular interval planting
- .09 coordinated pedestrian and vehicular light style
- .10 placement of banners on light poles
- .11 enhanced street furniture at select points
- .12 enhanced bus shelters
- .13 study burying overhead utilities
- .14 support revitalization
- .15 investigate rail service
- .16 identify opportunities for public art



connecting fair park to trinity park



community workshop.01

- 1 | bike/pedestrian connectivity
- 2 | cultural walk/timeline reflecting history/development of South Dallas
- 3 | pilot Block/Intersection along MLK to illustrate ideas (possibly between Atlanta & Latimore or at intersection of MLK Jr. and Malcolm X)
- 4 | enhanced lighting along street and amenities such as benches/etc in consistent theme
- 5 | Cedar Crest bridge enhancements need to address safety and physical conditions at each end
- 6 | improve public realm to improve business frontage & long term parking issues/increase foot traffic





fair park

bike trail

forest park

st. phillips school

forest heights

standing wave

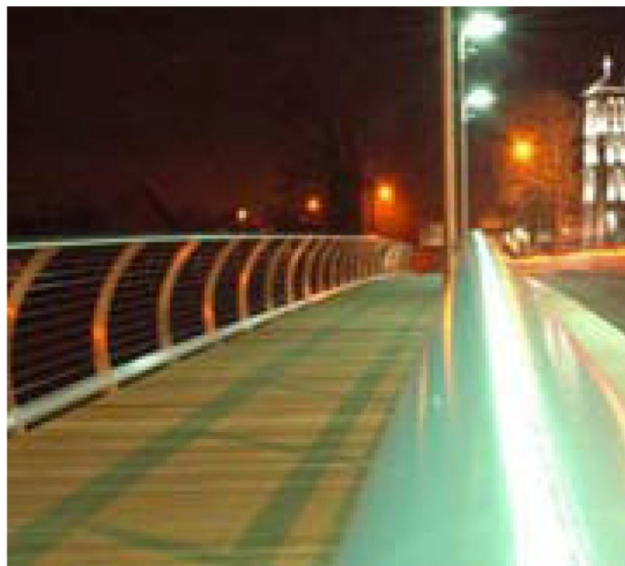
moore park

cedar crest park

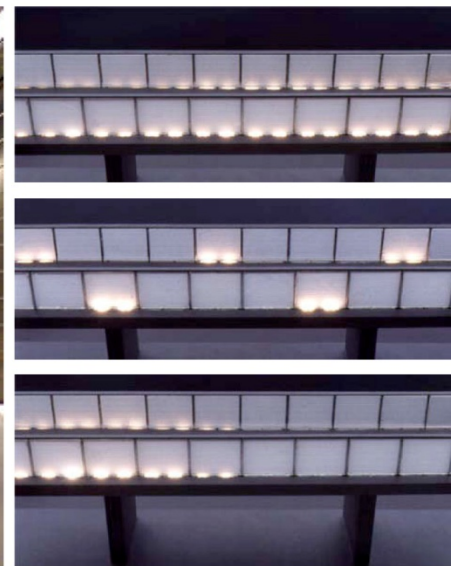
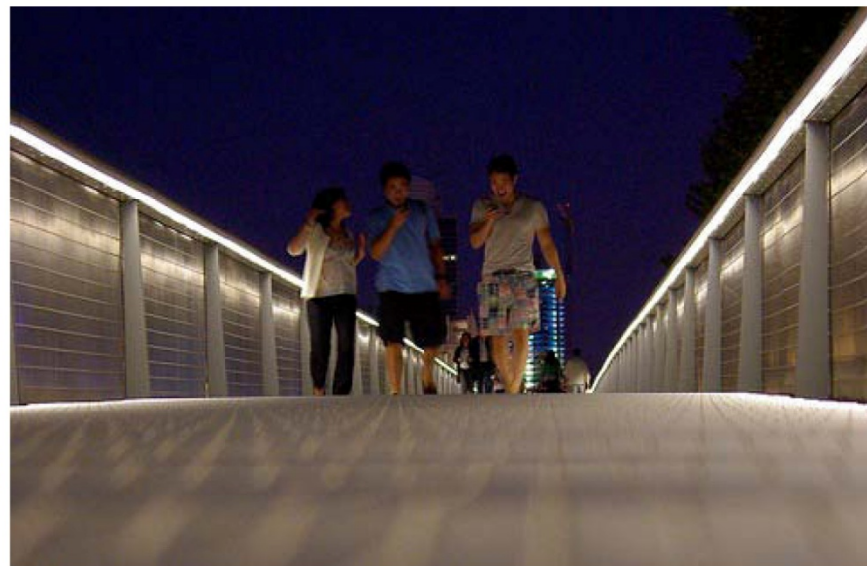
first step



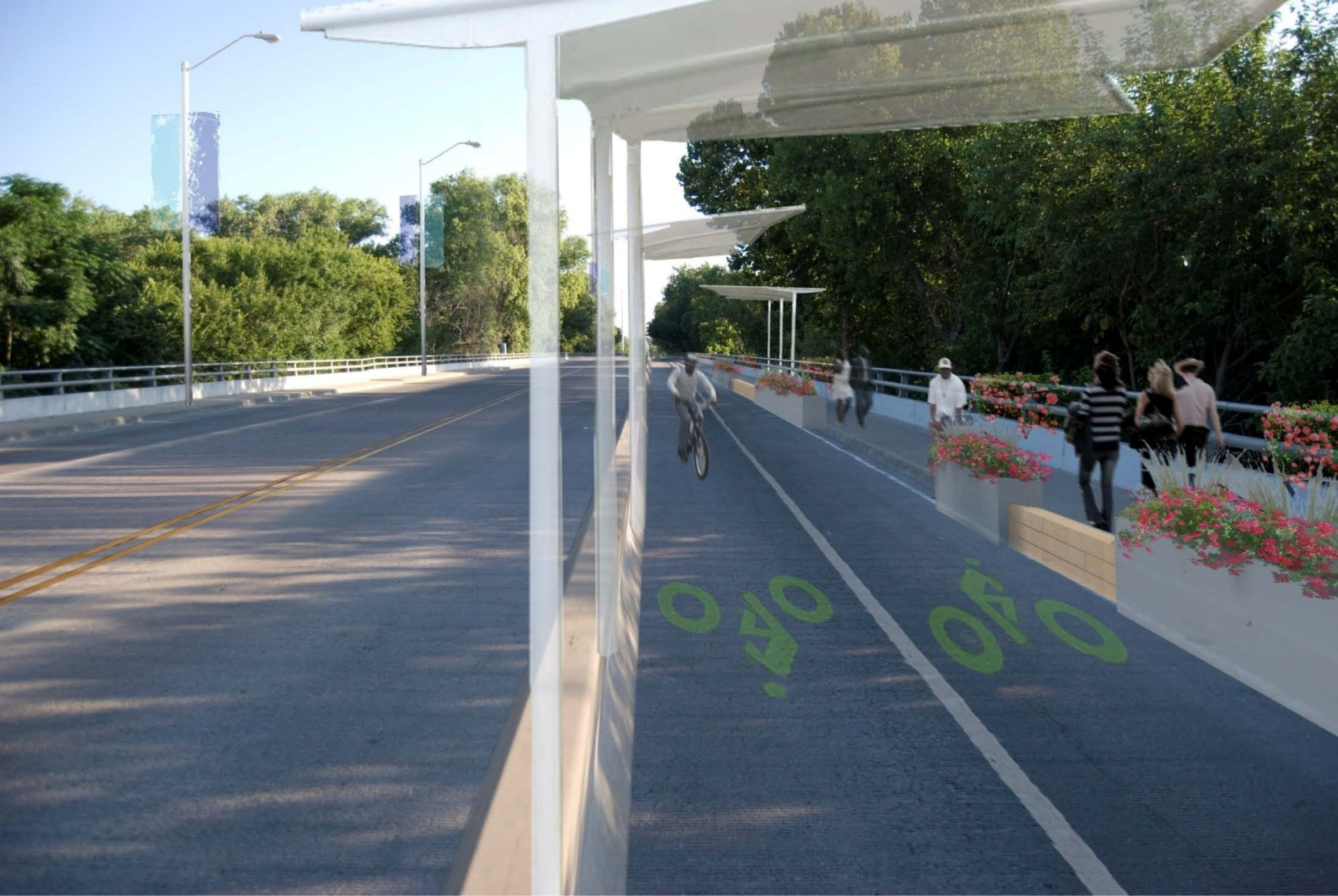
City of Dallas



existing condition & examples







scope development and refinement
rfp on the street
proposals submitted
selection of consultant

september/october 2010
october/november 2010
november/december 2010
february 2011

