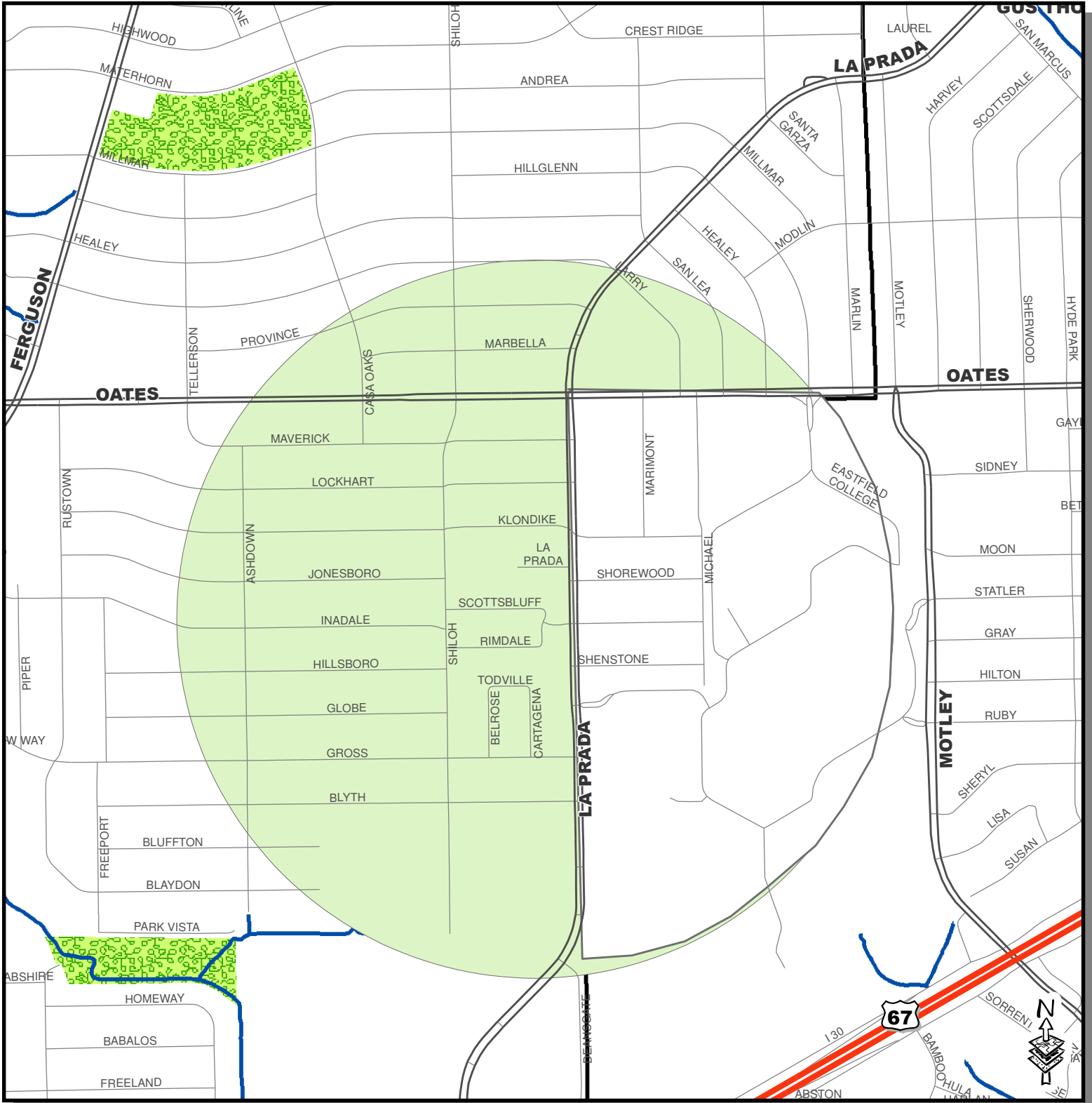


WNV Ground Spray Target Area 2013



Spray Date: August 4 (10 pm) through August 5, 2013 (3am)

City of Dallas



Data Source:
 Roads, Waterways, Lakes, Parks - City of Dallas Enterprise GIS
 Spray Areas - City of Dallas Code Compliance Services & Dallas County Environmental Services

City of Dallas GIS Map Disclaimer:
 The accuracy of this data within this map is not to be taken / used as data produced by a Registered Professional Land Surveyor for the State of Texas. This product is for informational purposes and may not have been prepared for or be suitable for legal, engineering, or surveying purposes. It does not represent an on-the-ground survey and represents only the approximate relative location of property boundaries. The City of Dallas makes no representation of any kind, including, but not limited to, warranties of merchantability or fitness for a particular purpose or use, nor are any such warranties to be implied with respect to the accuracy information/data presented on this map. Transfer, copies and/or use of information in this map without the presentation of this disclaimer is prohibited. City of Dallas GIS* State of Texas: H.B. 1147 (W. Smith) - 05/27/2011, Effective on 09/01/2011

Dallas Code Compliance, what it all means
COMMUNITY

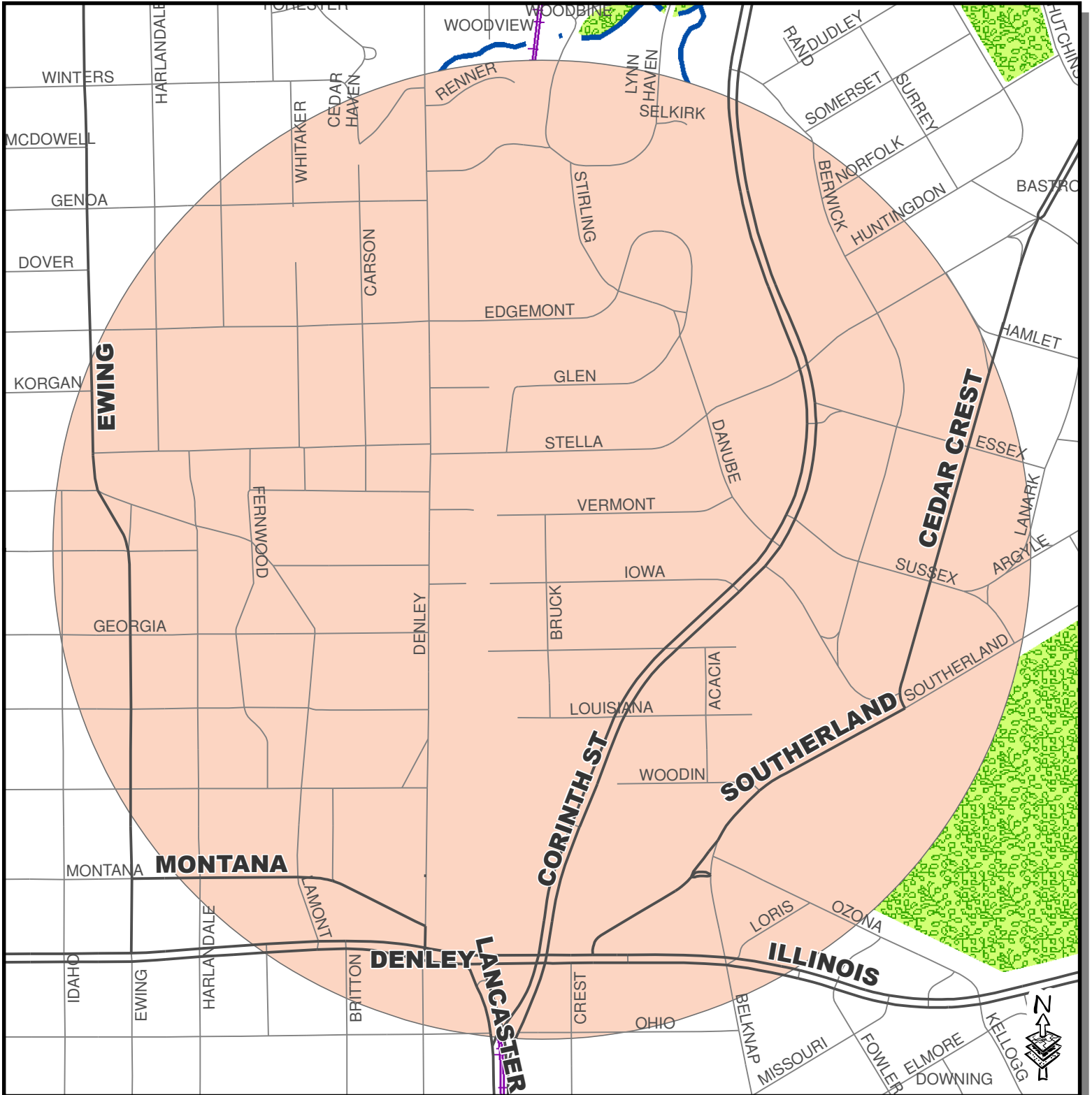
Friday, August 02, 2013 10:49:55 AM
 File Location: U:\Code\MosquitoOngoing\2013\2013-11-07_PresprayHalfMileArea
 Prepared By: Dallas Code Compliance
 Property of: City of Dallas
 For illustrative purposes only.

WNV Ground Spray Target Area 2013



Spray Date: August 4 (10 pm) through August 5, 2013 (3am)

City of Dallas



Data Source:
Roads, Waterways, Lakes, Parks - City of Dallas Enterprise GIS
Spray Areas - City of Dallas Code Compliance Services &
Dallas County Environmental Services

City of Dallas GIS Map Disclaimer:
The accuracy of this data within this map is not to be taken / used as data produced by a Registered Professional Land Surveyor for the State of Texas. This product is for informational purposes and may not have been prepared for or be suitable for legal, engineering, or surveying purposes. It does not represent an on-the-ground survey and represents only the approximate relative location of property boundaries. The City of Dallas makes no representation of any kind, including, but not limited to, warranties of merchantability or fitness for a particular purpose or use, nor are any such warranties to be implied with respect to the accuracy information/data presented on this map. Transfer, copies and/or use of information in this map without the presentation of this disclaimer is prohibited. City of Dallas GIS* State of Texas: H.B. 1147 (W. Smith) - 05/27/2011, Effective on 09/01/2011

Dallas Code Compliance, what it all means

COMMUNITY

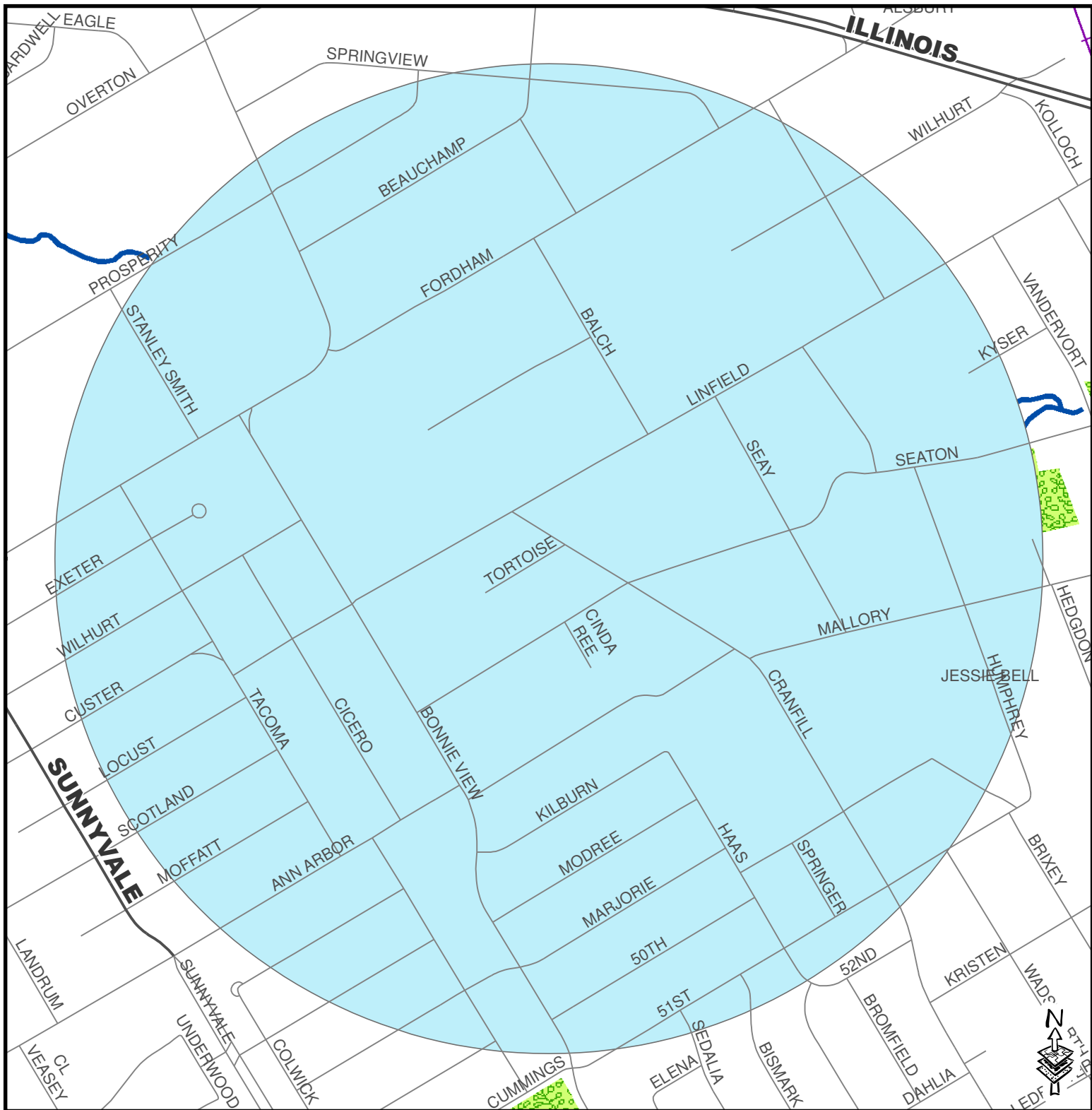
Friday, August 02, 2013 14:43:19 PM
File Location: U:\Code\MosquitoOngoing\2013\2013-11-07_PresprayHalfMileArea
Prepared By: Dallas Code Compliance
Property of: City of Dallas
For illustrative purposes only.

WNV Ground Spray Target Area 2013



Spray Date: August 4 (10 pm) through August 5, 2013 (3am)

City of Dallas



Data Source:
Roads, Waterways, Lakes, Parks - City of Dallas Enterprise GIS
Spray Areas - City of Dallas Code Compliance Services & Dallas County Environmental Services

City of Dallas GIS Map Disclaimer:
The accuracy of this data within this map is not to be taken / used as data produced by a Registered Professional Land Surveyor for the State of Texas. This product is for informational purposes and may not have been prepared for or be suitable for legal, engineering, or surveying purposes. It does not represent an on-the-ground survey and represents only the approximate relative location of property boundaries. The City of Dallas makes no representation of any kind, including, but not limited to, warranties of merchantability or fitness for a particular purpose or use, nor are any such warranties to be implied with respect to the accuracy information/data presented on this map. Transfer, copies and/or use of information in this map without the presentation of this disclaimer is prohibited. City of Dallas GIS* State of Texas: H.B. 1147 (W. Smith) - 05/27/2011, Effective on 09/01/2011

Dallas Code Compliance, what it all means
COMMUNITY

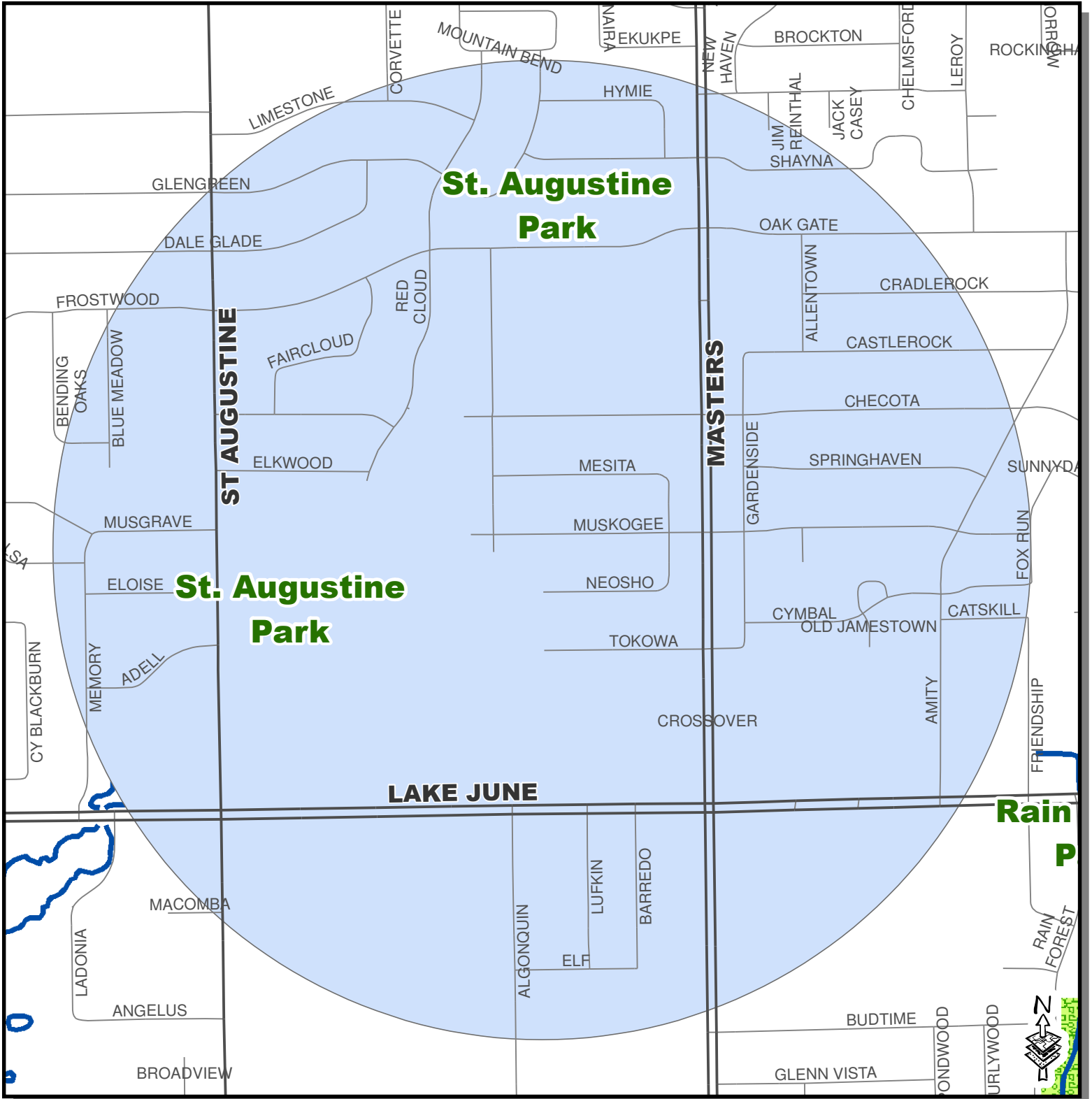
Friday, August 02, 2013 14:54:07 PM
File Location: U:\Code\MosquitoOngoing\2013\2013-11-07_PresprayHalfMileArea
Prepared By: Dallas Code Compliance
Property of: City of Dallas
For illustrative purposes only.

WNV Ground Spray Target Area 2013



Spray Date: August 4 (10 pm) through August 5, 2013 (3am)

City of Dallas



Data Source:
 Roads, Waterways, Lakes, Parks - City of Dallas Enterprise GIS
 Spray Areas - City of Dallas Code Compliance Services &
 Dallas County Environmental Services

City of Dallas GIS Map Disclaimer:
 The accuracy of this data within this map is not to be taken /
 used as data produced by a Registered Professional Land
 Surveyor for the State of Texas. This product is for
 informational purposes and may not have been prepared
 for or be suitable for legal, engineering, or surveying purposes.
 It does not represent an on-the-ground survey and represents
 only the approximate relative location of property boundaries.
 The City of Dallas makes no representation of any kind, including,
 but not limited to, warranties of merchantability or fitness for a
 particular purpose or use, nor are any such warranties to be
 implied with respect to the accuracy information/data
 presented on this map. Transfer, copies and/or use of information
 in this map without the presentation of this disclaimer is prohibited.
 City of Dallas GIS* State of Texas: H.B. 1147 (W. Smith) - 05/27/2011,
 Effective on 09/01/2011

Dallas Code Compliance, what it all means

COMMUNITY

Friday, August 02, 2013 14:52:26 PM
 File Location: U:\Code\MosquitoOngoing\2013\2013-11-07_PresprayHalfMileArea
 Prepared By: Dallas Code Compliance
 Property of: City of Dallas
 For illustrative purposes only.