

DALLAS ANIMAL SERVICES

ANNUAL REPORT 2013 Calendar Year

2013 Live
Release Rate

2013
6,866
ADOPTIONS
A NEW RECORD!

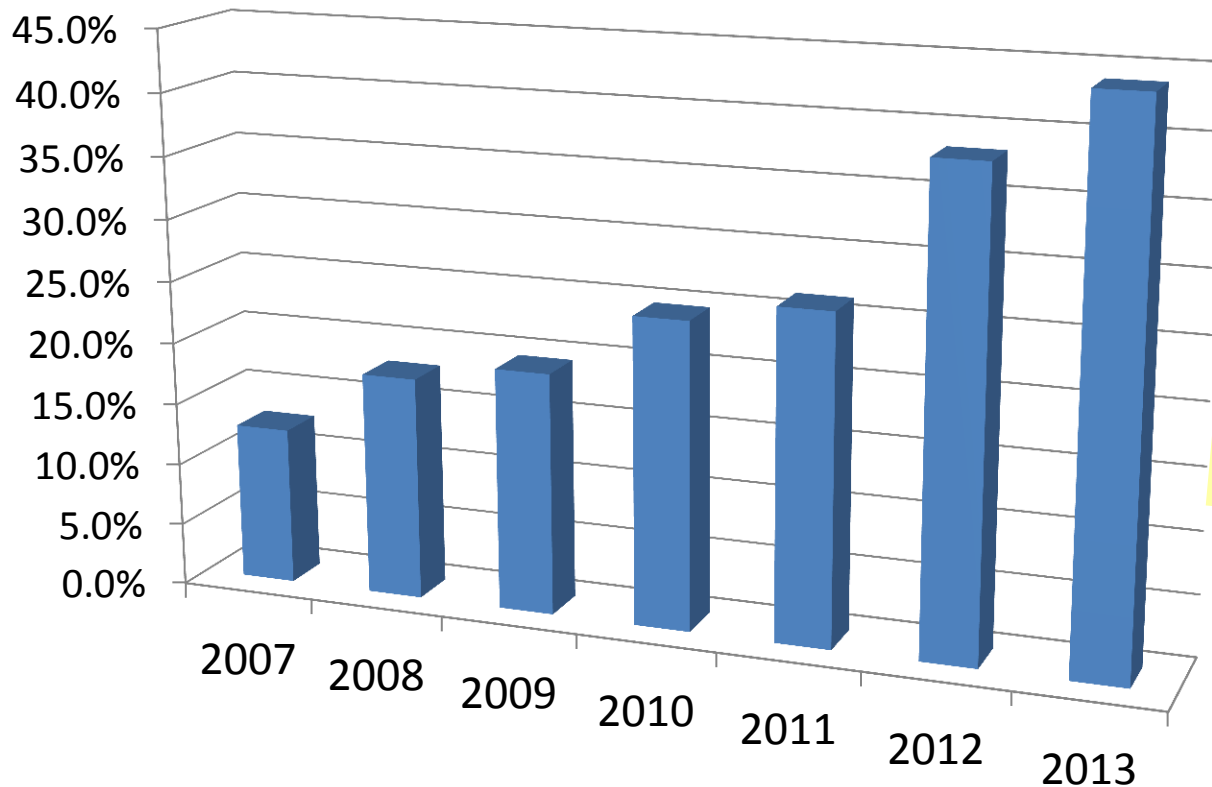
43.9%
A New Record!



All statistics include dogs and cats only.

Live Release Rates

Calendar Year 2007-2013 Comparison

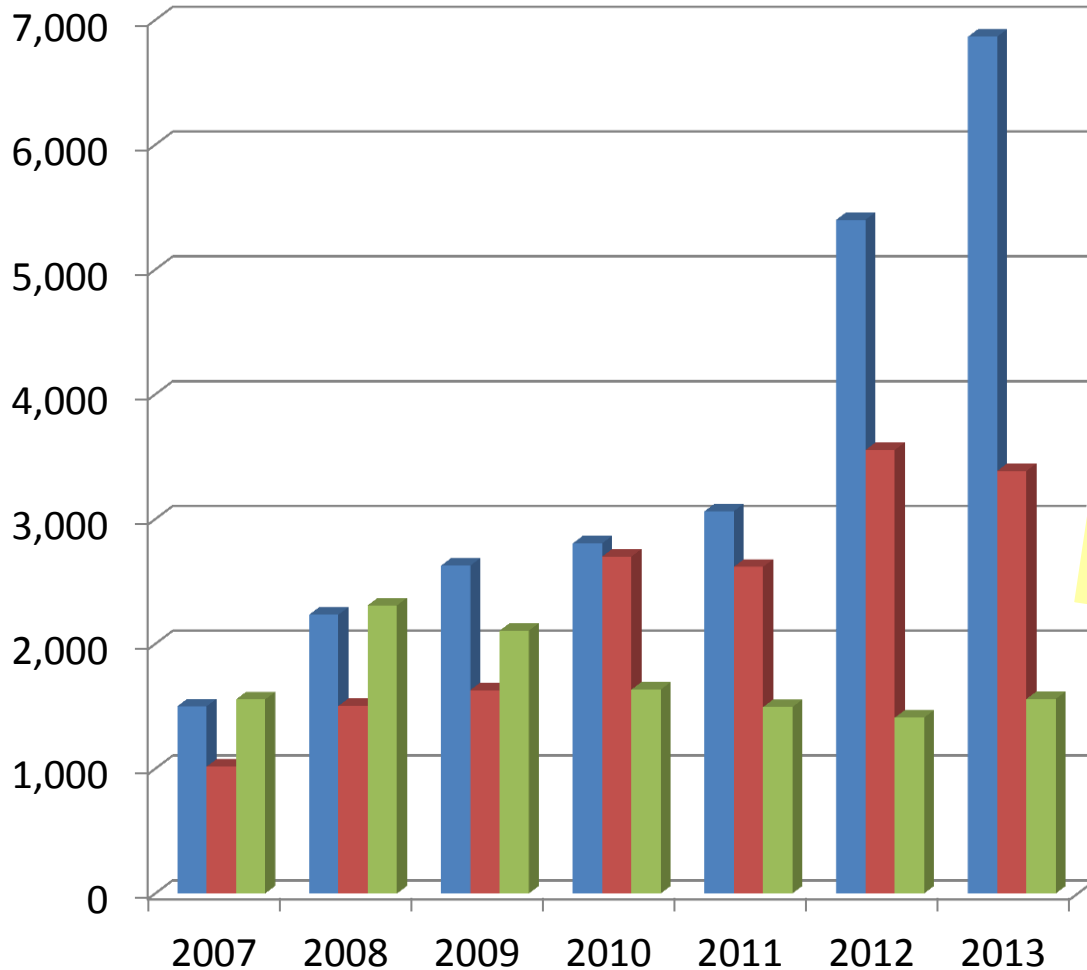


★
Live Release Rate
2013 - 43.9%
A New Record!
2012 - 38.3%
2011 - 26.5%
2010 - 24.7%
2009 - 19.5%
2008 - 18.0%
2007 - 12.7%

Live Release Rate is calculated by dividing total live outcomes (adoptions, outgoing transfers, return to owner/guardian) by total outcomes less unhealthy owner requested euthanasia. All statistics include dogs and cats only.

Adoptions

Calendar Year 2007-2013 Comparison

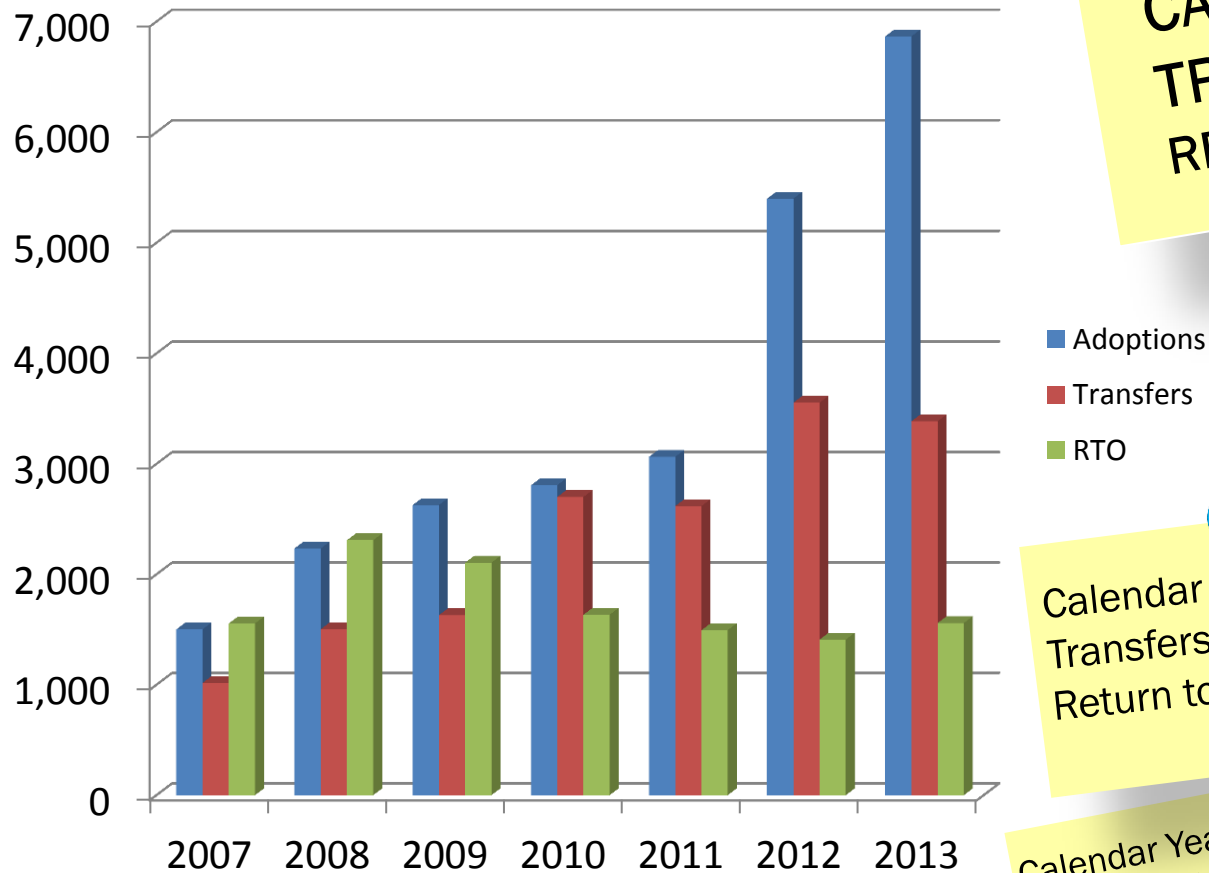



CALENDAR YEAR 2013
6,866
A New Record!
Calendar Year 2012 - 5,399
Calendar Year 2011 - 3,090
Calendar Year 2010 - 2,816
Calendar Year 2009 - 2,627
Calendar Year 2008 - 2,234
Calendar Year 2007 - 1,500

■ Adoptions
■ Transfers
■ RTO

Transfers & Return to Owner

Calendar Year 2007-2013 Comparison



■ Adoptions
■ Transfers
■ RTO

CALENDAR YEAR 2013:
TRANSFERS 3,386
RETURN TO OWNER 1,559

Calendar Year 2012:
Transfers 3,554
Return to Owner 1,409

Calendar Year 2011:
Transfers 2,640
Return to Owner 1,493

Calendar Year 2010:
Transfers 2,707
Return to Owner 1,634

Calendar Year 2009:
Transfers 1,630
Return to Owner 2,106

Calendar Year 2008:
Transfers 1,503
Return to Owner 2,309

Calendar Year 2007:
Transfers 1,016
Return to Owner 1,555

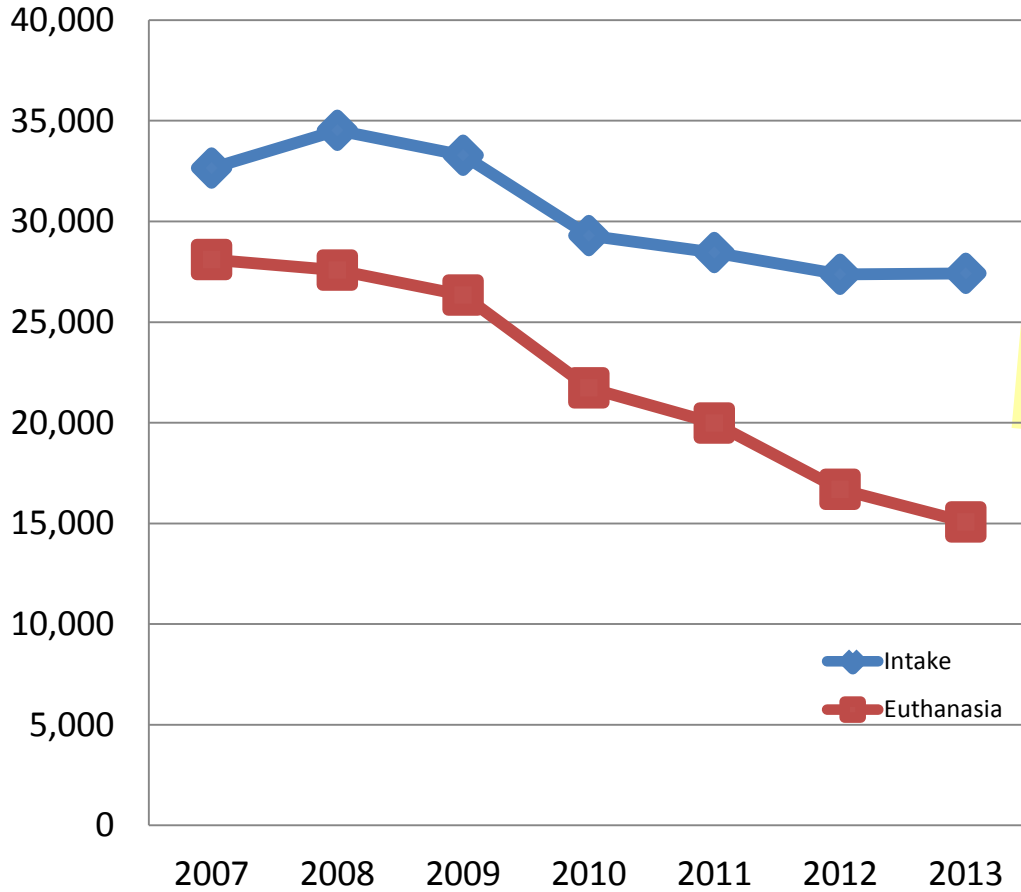
Adoptions, transfers and returns to owner are all part of calculating live release rates. Innovative shelter programs and community engagement have continued to positively impact our live release rate.

Source: City of Dallas Animal Services. All statistics include dogs and cats only.

Intake & Euthanasia

46%
Decrease
In Euthanasia
2007 to 2013

Calendar Year 2007-2013 Comparison



INTAKE:
Calendar Year 2013
27,416
Calendar Year 2012 - 27,375
Calendar Year 2011 - 28,565
Calendar Year 2010 - 29,338
Calendar Year 2009 - 33,276
Calendar Year 2008 - 34,522
Calendar Year 2007 - 32,647

EUTHANASIA:
Calendar Year 2013
15,067* Record Low
Calendar Year 2012 - 16,681
Calendar Year 2011 - 20,050
Calendar Year 2010 - 21,763
Calendar Year 2009 - 26,332
Calendar Year 2008 - 27,578
Calendar Year 2007 - 28,095

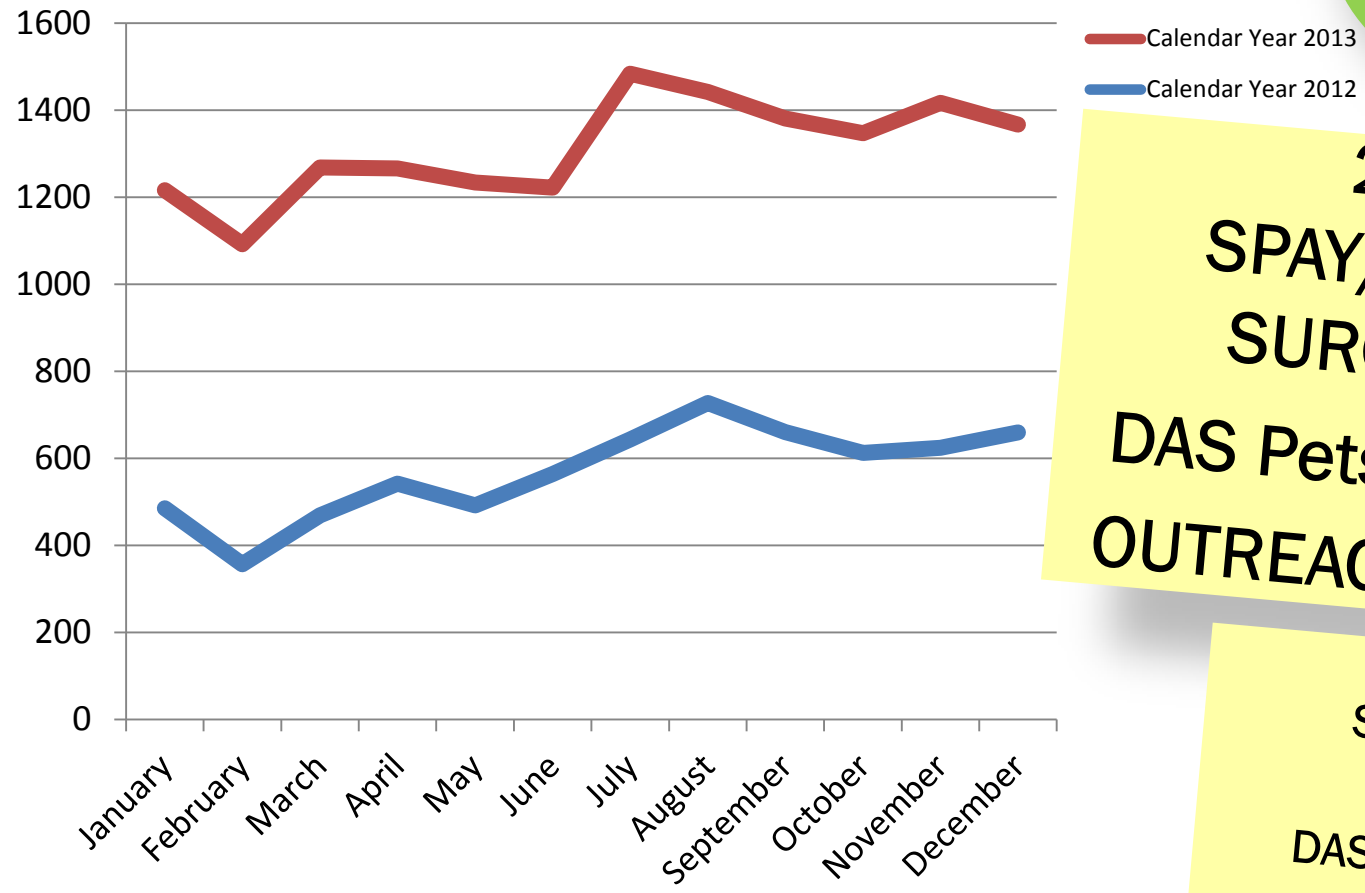
Aggressive spay/neuter efforts and resources for our residents are paying off. Intake numbers continue to decrease, as do euthanasia numbers.

Source: City of Dallas Animal Services. All statistics include dogs and cats only.

Spay & Neuter Surgeries

Calendar Year 2013 Spay/Neuter Surgeries at DAS

8,903
Total



2013
SPAY/NEUTER SURGERIES:
DAS Pets - 6,705
OUTREACH - 2,198

2012
SPAY/NEUTER SURGERIES:
DAS Pets - 5,374
OUTREACH - 1,459

Aggressive spay/neuter efforts and resources for our residents are paying off. As Spay/Neuter services increase, Intake numbers continue to decrease, as do euthanasia numbers.

Source: City of Dallas Animal Services. All statistics include dogs and cats only.

OUR COMMUNITY

By The Numbers

75

The average number of cats and dogs we took in every day last year!

27,416

The number of dogs and cats we took in last year.

48,675

The number of calls for service we answered last year.

342.5

The number of square miles our offices are responsible for.

1,223,229

The size of the population we serve.



Sources: city-data.com, Dallas CVB, and City of Dallas Animal Services, All statistical totals have an acceptable variance of .5% due to database variances in intake and outcome dispositions of the shelter population.

All statistics include dogs and cats only.