

DALLAS ANIMAL SERVICES

ANNUAL REPORT FISCAL YEAR 2012-2013

Fiscal 2012-2013
Live Release Rate

Fiscal 2012-2013
4,056 Transfers

Fiscal 2012-2013
6,807
ADOPTIONS
A NEW RECORD!

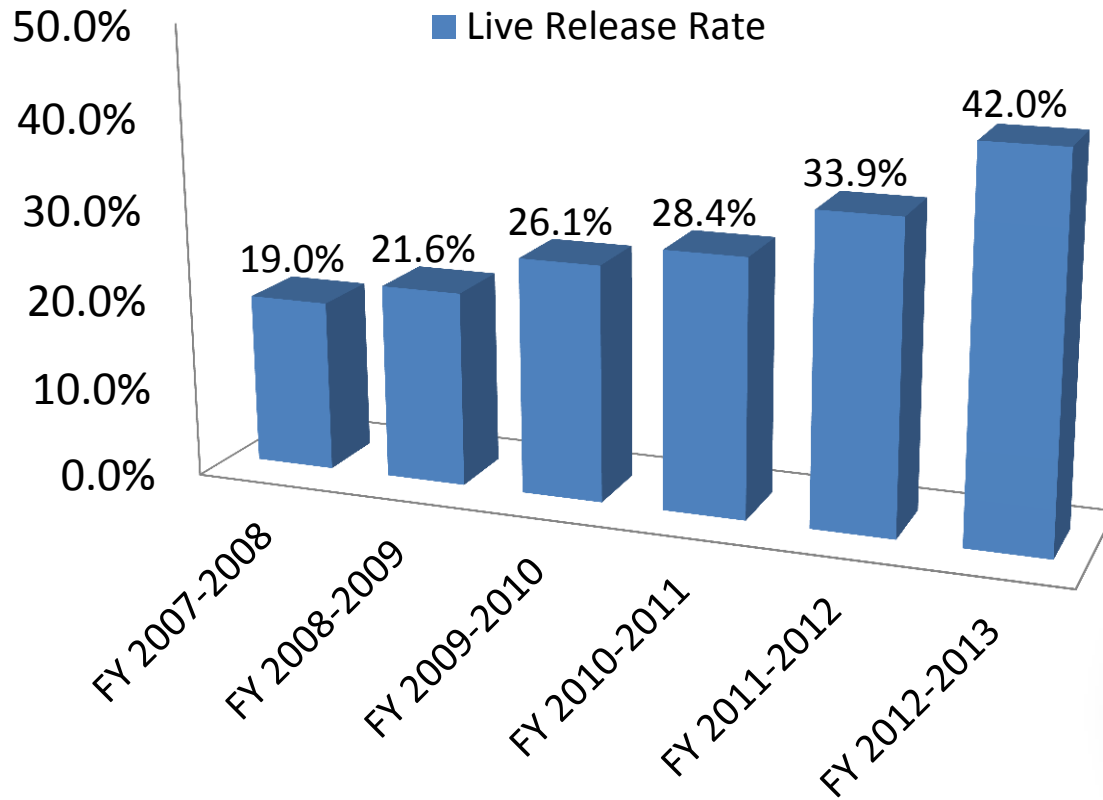
42.0%
A new record!



City of Dallas fiscal year runs October 1 to September 30.
All statistics include all animals.

Live Release Rates

Fiscal Year 2007-2008 thru 2012-2013 Comparison



★
Live Release Rate*
2012-2013 - 42.0%
A New Record!
2011-2012 - 33.9%
2010-2011 - 28.4%
2009-2010 - 26.1%
2008-2009 - 21.6%
2007-2008 - 19.0%

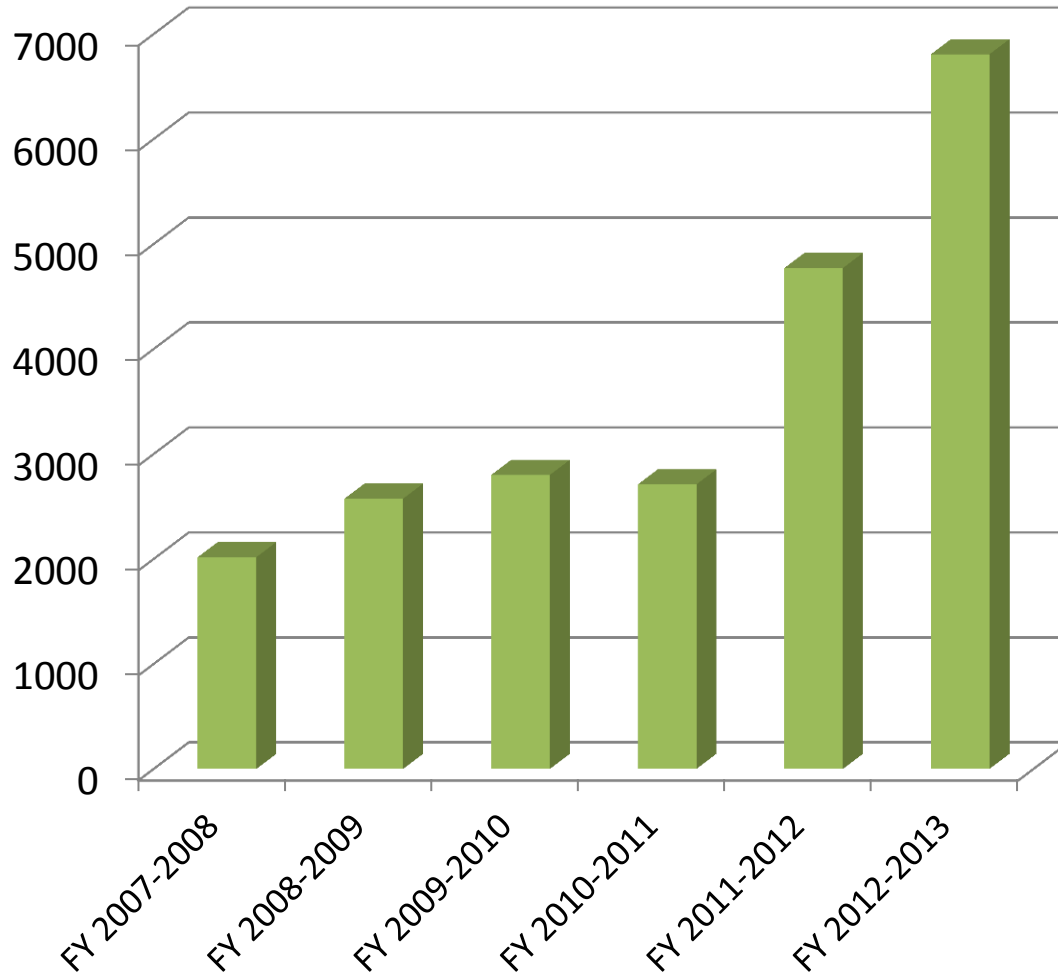
5,410
More Lives
Saved!
2007-2008 vs.
2012-2013

Source: City of Dallas Animal Services. All statistics include all animals.

*Live Release Rate is calculated by dividing total live outcomes (adoptions, outgoing transfers, return to owner/guardian) by total intake.

Adoptions

Fiscal Year 2007-2008 thru 2012-2013 Comparison

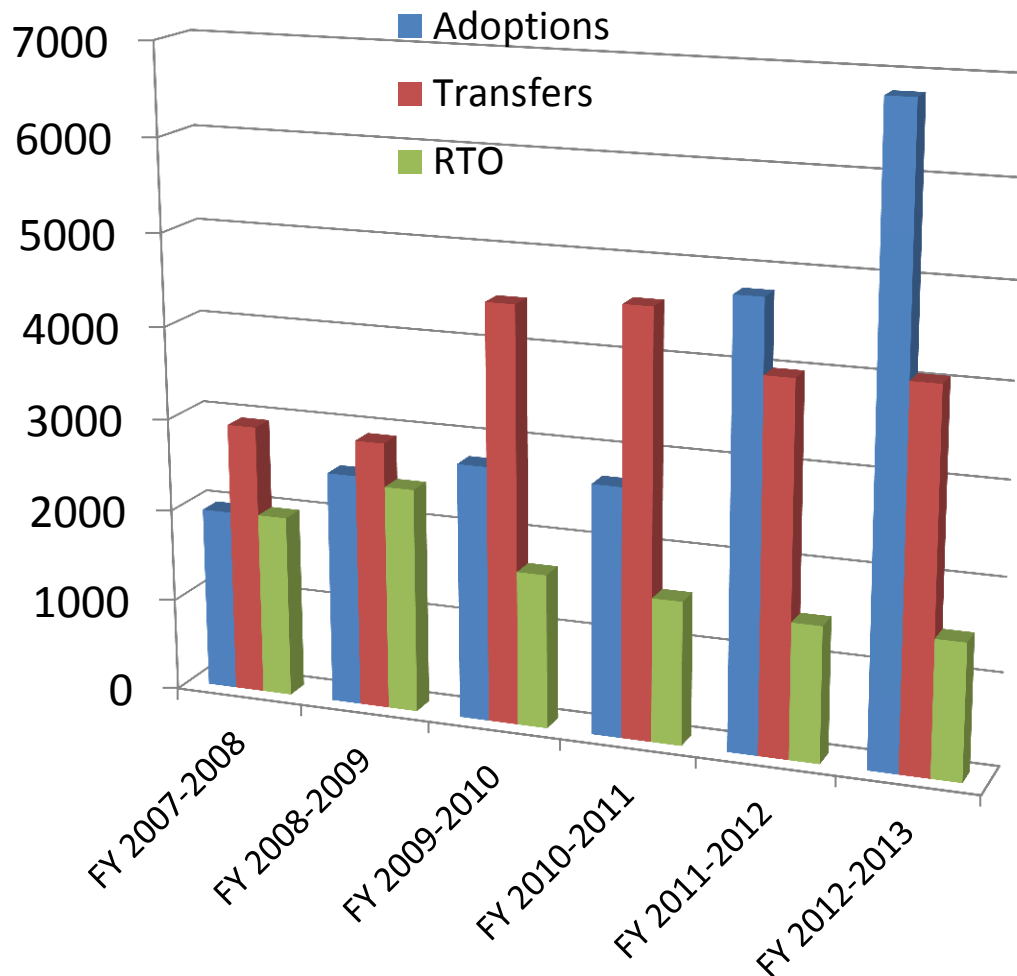



2012-2013 - 6,807*
***A NEW RECORD!**
2012-2013 - 4,771
2010-2011 - 2,710
2009-2010 - 2,800
2008-2009 - 2,574
2007-2008 - 2,017

■ Adoptions

Transfers & Return to Owner

Fiscal Year 2007-2008 thru 2012-2013 Comparison



2012-2013:
TRANSFERS 4,056
RETURN TO OWNER 1,471

2011 - 2012:
Transfers 3985
Return to Owner 1,467

2010 - 2011:
Transfers 4,586
Return to Owner 1,553

2008 - 2009:
Transfers 2,900
Return to Owner 2,432

2009 - 2010:
Transfers 4,492
Return to Owner 1,669

2007 -2008:
Transfers 2,934
Return to Owner 1,973

Adoptions, transfers and returns to owner are all part of calculating live release rates. Innovative shelter programs and community engagement have continued to positively impact our live release rate.

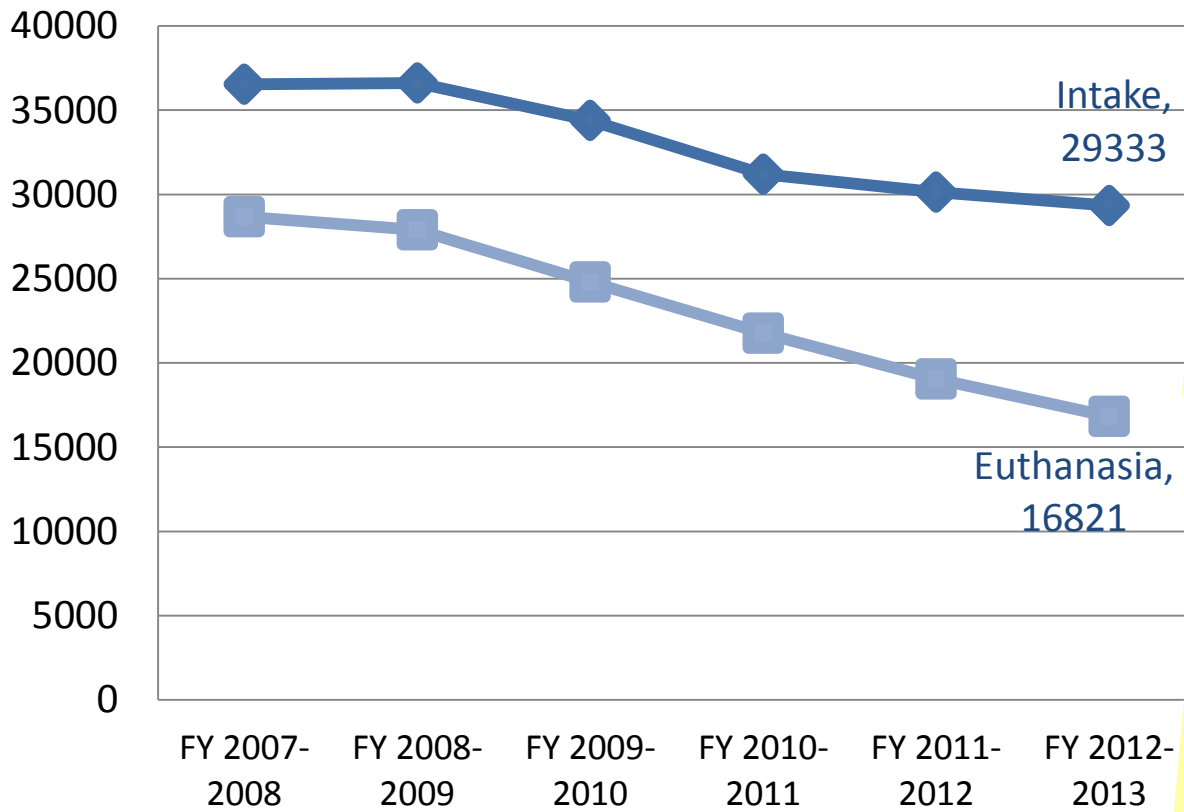
Source: City of Dallas Animal Services. All statistics include all animals.

Intake & Euthanasia

Fiscal Year 2007-2008 thru 2012-2013 Comparison

41.3%
Decrease
In Euthanasia
2007 to 2013

Intake & Euthanasia



INTAKE:
2012-2013 - 29,333
2011-2012 - 30,144
2010-2011 - 31,191
2009-2010 - 34,399
2008-2009 - 36,617
2007-2008 - 36,531

EUTHANASIA:
2012-2013 - 16,821*
*Record Low
2012-2013 - 19,041
2010-2011 - 21,763
2009-2010 - 24,793
2008-2009 - 27,888
2007-2008 - 28,671

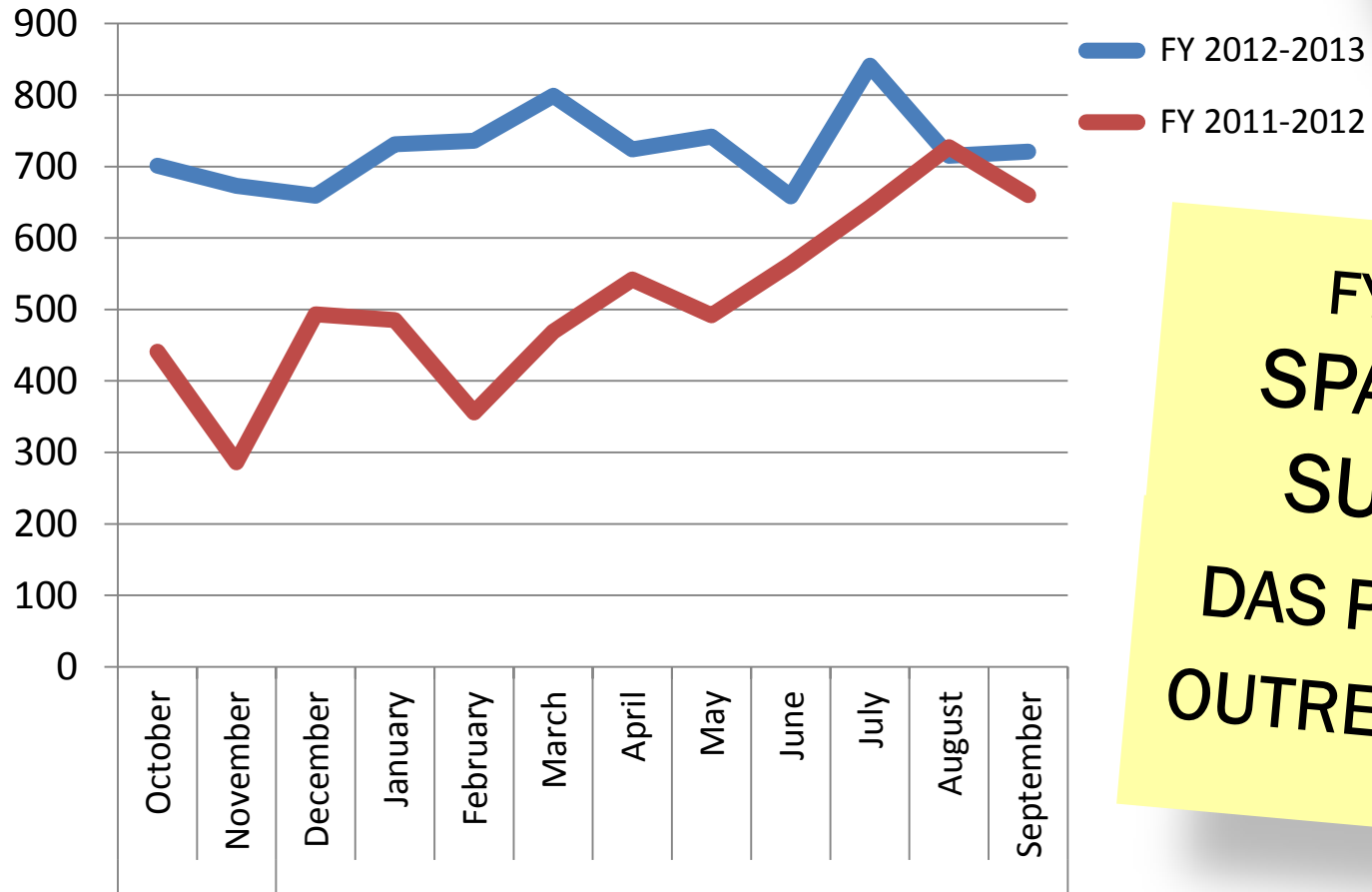
Aggressive spay/neuter efforts and resources for our residents are paying off. Intake numbers continue to decrease, as do euthanasia numbers.

Source: City of Dallas Animal Services. All statistics include all animals.

Spay & Neuter Surgeries

Fiscal Year 2012-2013 Spay/Neuter Surgeries at DAS

8,700
Total



FY 2012-2013
SPAY/NEUTER
SURGERIES:
DAS Pets - 6,473
OUTREACH - 2,227

Aggressive spay/neuter efforts and resources for our residents are paying off. As Spay/Neuter services increase, Intake numbers continue to decrease, as do euthanasia numbers.
Source: City of Dallas Animal Services. All statistics include all animals.

OUR COMMUNITY

By The Numbers

80

The average number of animals we took in every day during FY 2012-2013!

29,333

The number of animals we took in last year.

49,386

The number of calls for service we answered last year.

342.5

The number of square miles our offices are responsible for.

1,223,229

The size of the population we serve.

