

DALLAS ANIMAL SERVICES

ANNUAL REPORT FISCAL YEAR 2013-2014

Fiscal 2013-2014
Live Release Rate

45.6%
A new record!

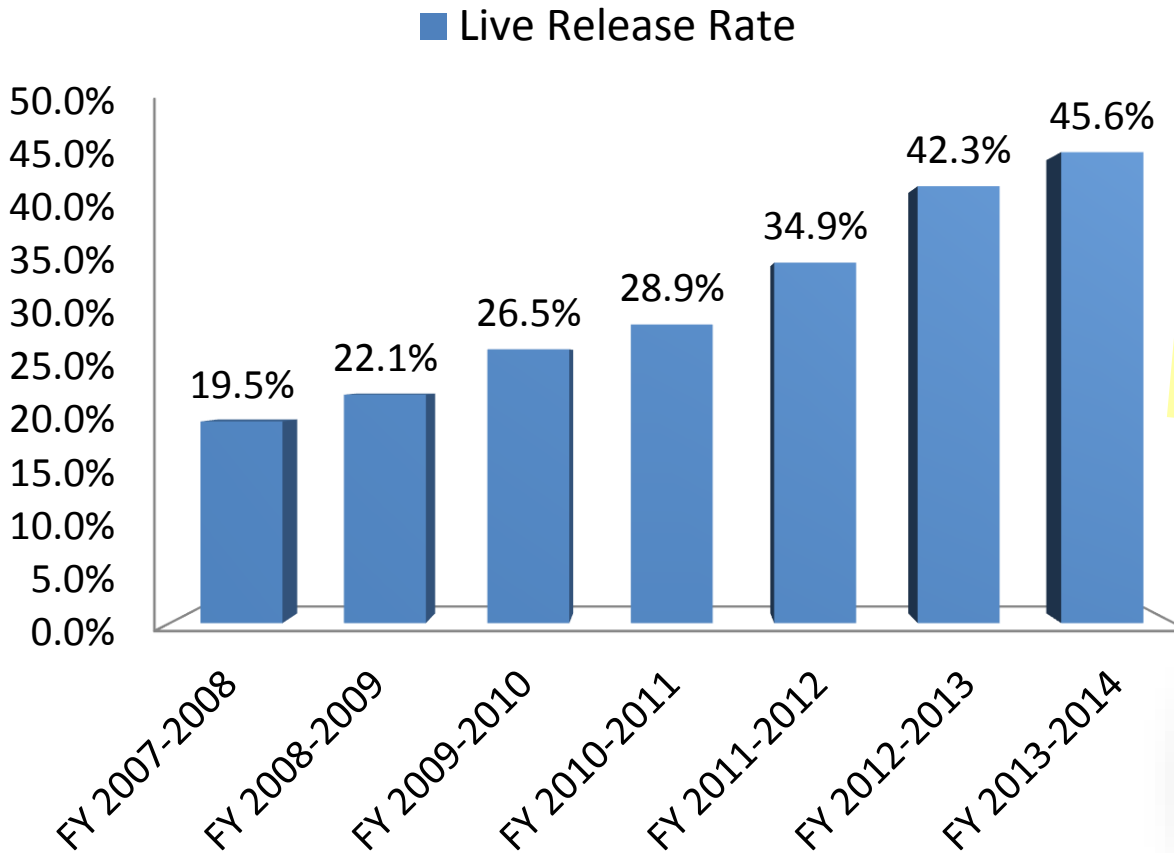
Fiscal 2013-2014
8,192
ADOPTIONS
A NEW RECORD!



City of Dallas fiscal year runs October 1 to September 30.
All statistics include all animals.

Live Release Rates

Fiscal Year 2007-2008 thru 2013-2014 Comparison



★
Live Release Rate*
2013-2014 - 45.6%
A New Record!
2012-2013 42.3%
2011-2012 - 34.9%
2010-2011 - 28.9%
2009-2010 - 26.5%
2008-2009 - 22.1%
2007-2008 - 19.5%

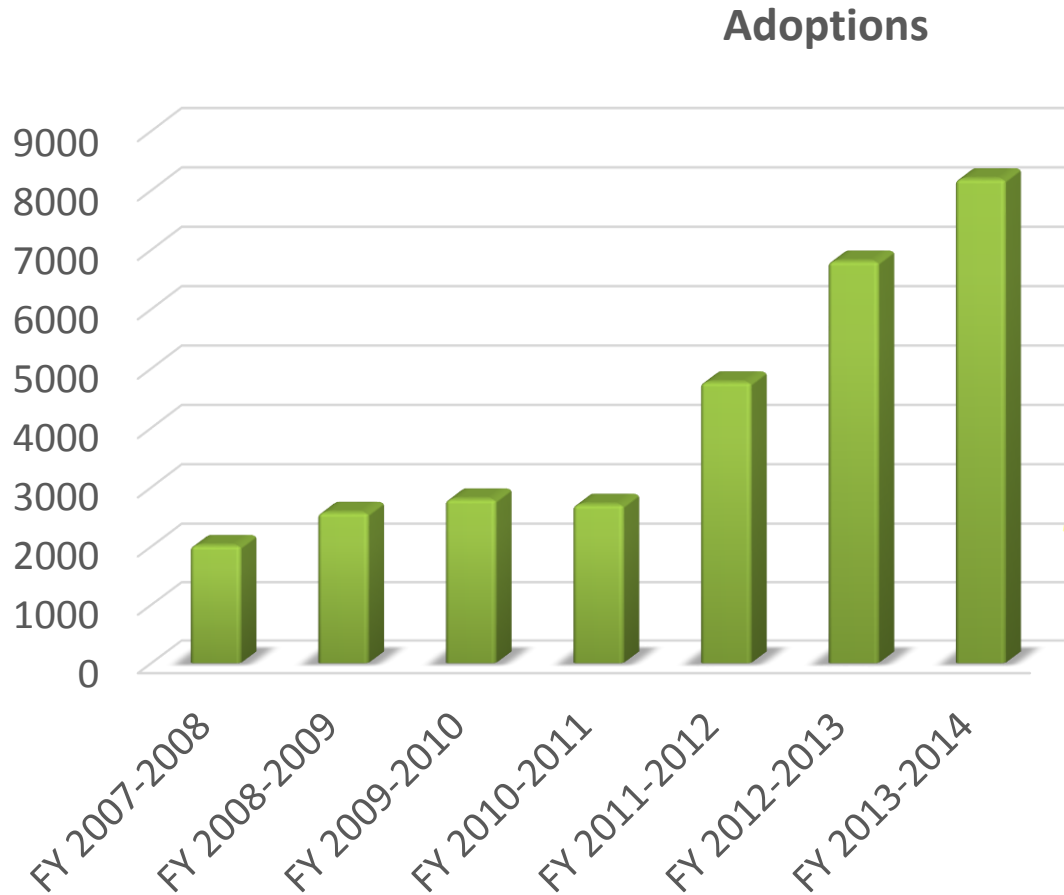
5,805
More Lives
Saved!
2007-2008 vs.
2013-2014

Source: City of Dallas Animal Services. All statistics include all animals.

*Live Release Rate is calculated by dividing total live outcomes (adoptions, outgoing transfers, return to owner/guardian) by total outcomes.

Adoptions

Fiscal Year 2007-2008 thru 2013-2014 Comparison



2013-2014 - 8,192*

***A NEW RECORD!**

2012-2013 - 6,807

2011-2012 - 4,771

2010-2011 - 2,710

2009-2010 - 2,800

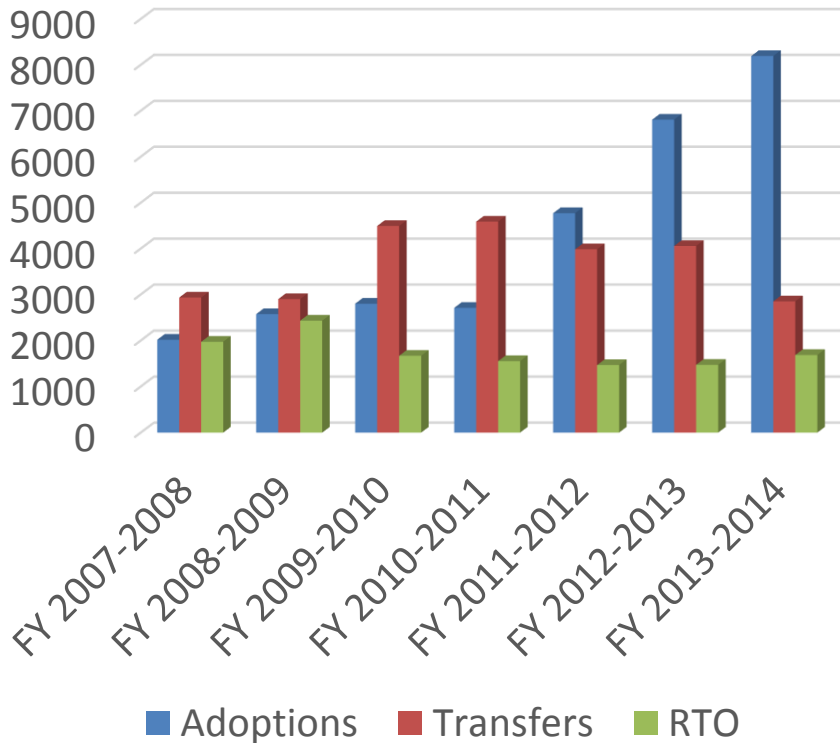
2008-2009 - 2,574

2007-2008 - 2,017

Transfers & Return to Owner

Fiscal Year 2007-2008 thru
2013-2014 Comparison

2013-2014:
TRANSFERS 2,851
RETURN TO OWNER 1,686



2012-2013:

- Transfers 4,056
- Return to Owner 1,471

2011-2012:

- Transfers 3,985
- Return to Owner 1,467

2010-2011:

- Transfers 4,586
- Return to Owner 1,553

2009-2010:

- Transfers 4,492
- Return to Owner 1,669

2008-2009:

- Transfers 2,900
- Return to Owner 2,432

2007-2008:

- Transfers 2,934
- Return to Owner 1,973

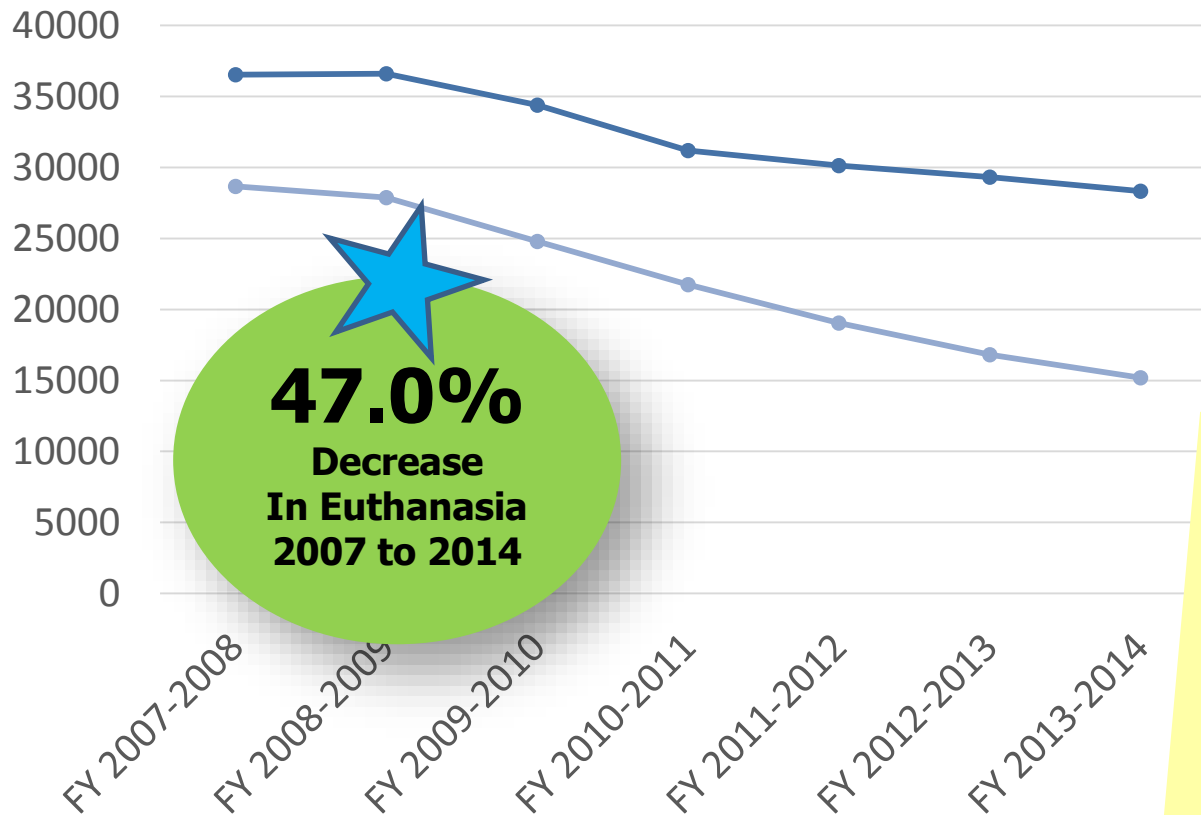
Adoptions, transfers and returns to owner are all part of calculating live release rates. Innovative shelter programs and community engagement have continued to positively impact our live release rate.

Source: City of Dallas Animal Services. All statistics include all animals.

Intake & Euthanasia

Fiscal Year 2007-2008 thru 2013-2014 Comparison

Intake & Euthanasia



47.0%
Decrease
In Euthanasia
2007 to 2014

INTAKE:

- 2013-2014 - 28,326
- 2012-2013 - 29,333
- 2011-2012 - 30,144
- 2010-2011 - 31,191
- 2009-2010 - 34,399
- 2008-2009 - 36,617
- 2007-2008 - 36,531

EUTHANASIA:

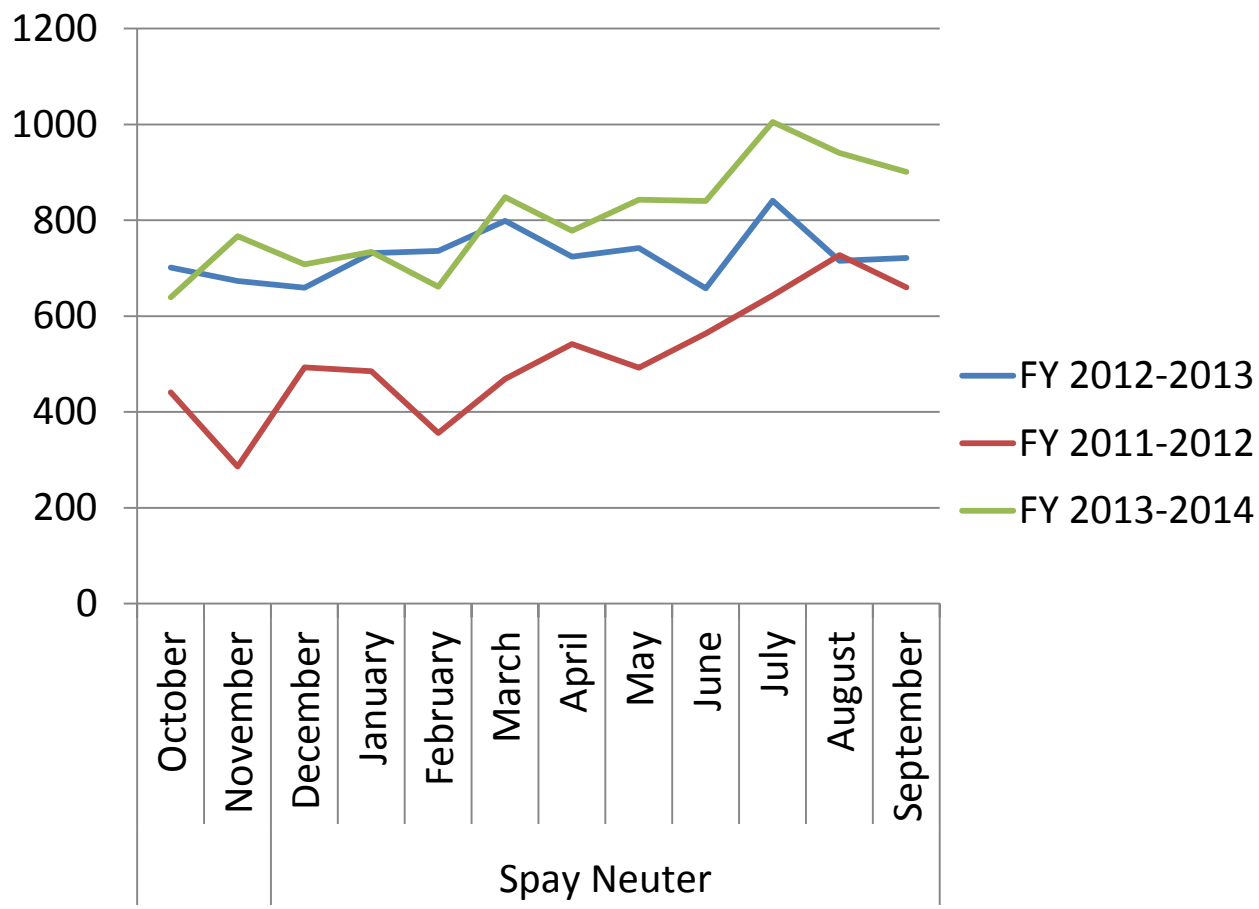
- 2013-2014 - 15,195*
- *Record Low
- 2012-2013 - 16,821
- 2011-2012 - 19,041
- 2010-2011 - 21,763
- 2009-2010 - 24,793
- 2008-2009 - 27,888
- 2007-2008 - 28,671

Aggressive spay/neuter efforts and resources for our residents are paying off. Intake numbers continue to decrease, as do euthanasia numbers.

Source: City of Dallas Animal Services. All statistics include all animals.

Spay & Neuter Surgeries

Fiscal Year 2013-2014 Spay/Neuter Surgeries at DAS



9,664
Total

**FY 2013-2014
SPAY/NEUTER
SURGERIES:
DAS Pets - 7,226
OUTREACH - 2,438**

Aggressive spay/neuter efforts and resources for our residents are paying off. As Spay/Neuter services increase, Intake numbers continue to decrease, as do euthanasia numbers.
Source: City of Dallas Animal Services. All statistics include all animals.

OUR COMMUNITY

By The Numbers

77

The average number of animals we took in every day during FY 2013-2014!

28,326

The number of animals we took in last year.

48,351

The number of calls for service we answered in FY13/14.

342.5

The number of square miles our offices are responsible for.

1,241,162

The size of the population we serve.

