

DALLAS ANIMAL SERVICES

ANNUAL REPORT FISCAL YEAR 2014-2015

Live Release Rate

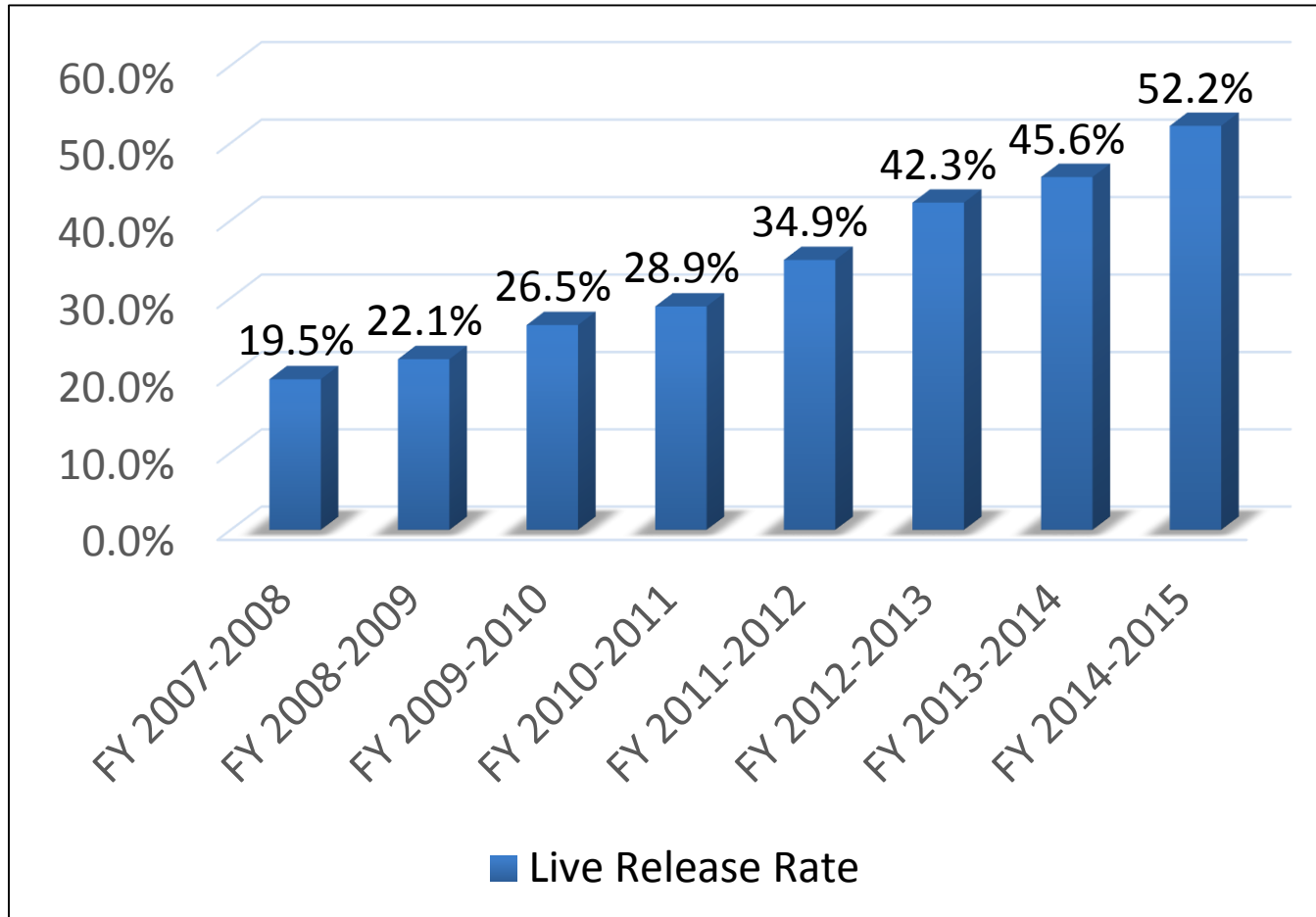
52.2%

A NEW RECORD



Live Release Rates

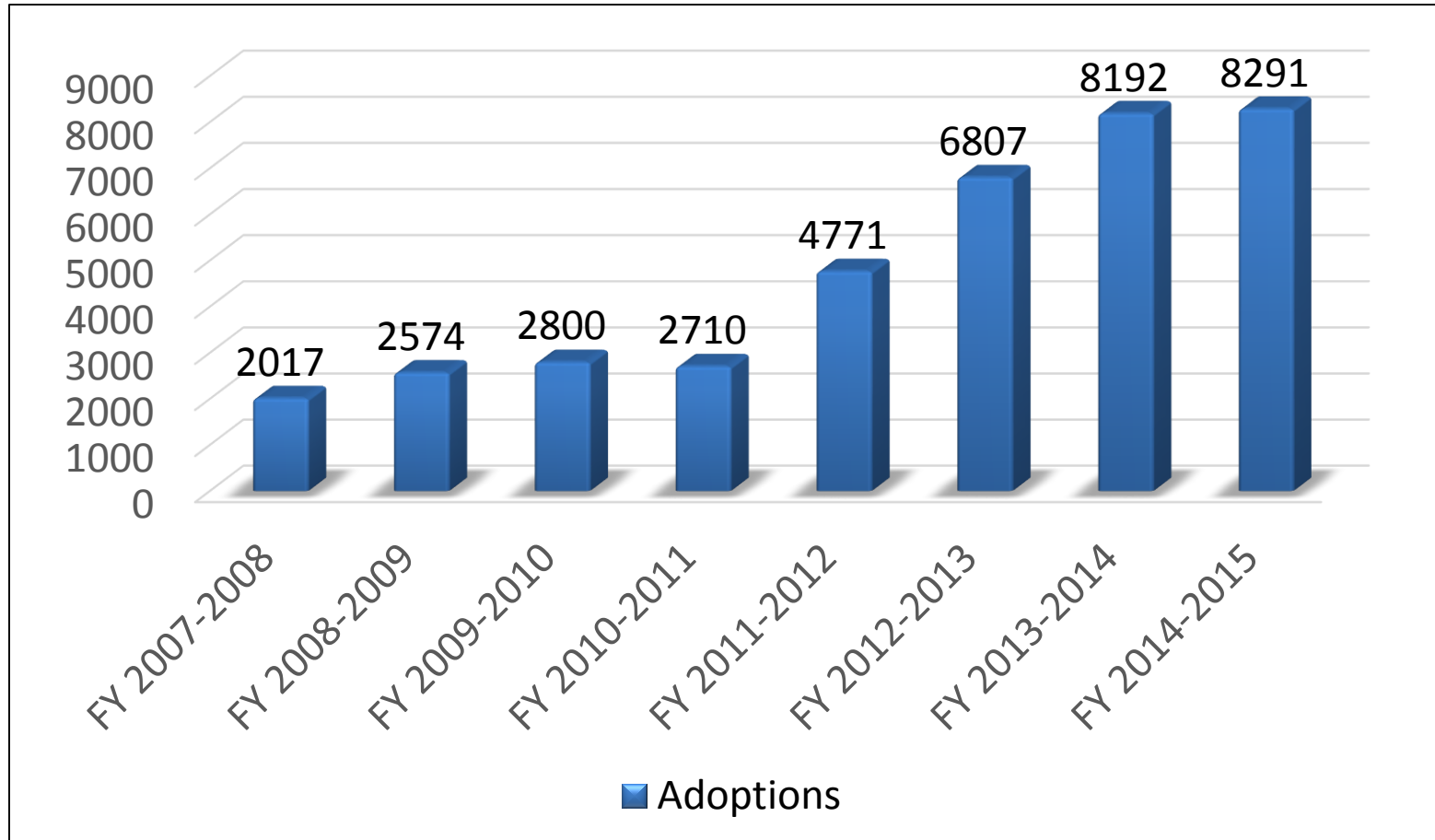
Fiscal Year 2007-2008 thru 2014-2015 Comparison



*Live Release Rate is calculated by dividing total live outcomes (adoptions, outgoing transfers, return to owner/guardian) by total outcomes.
Source: City of Dallas Animal Services. All statistics include all animals.

Adoptions

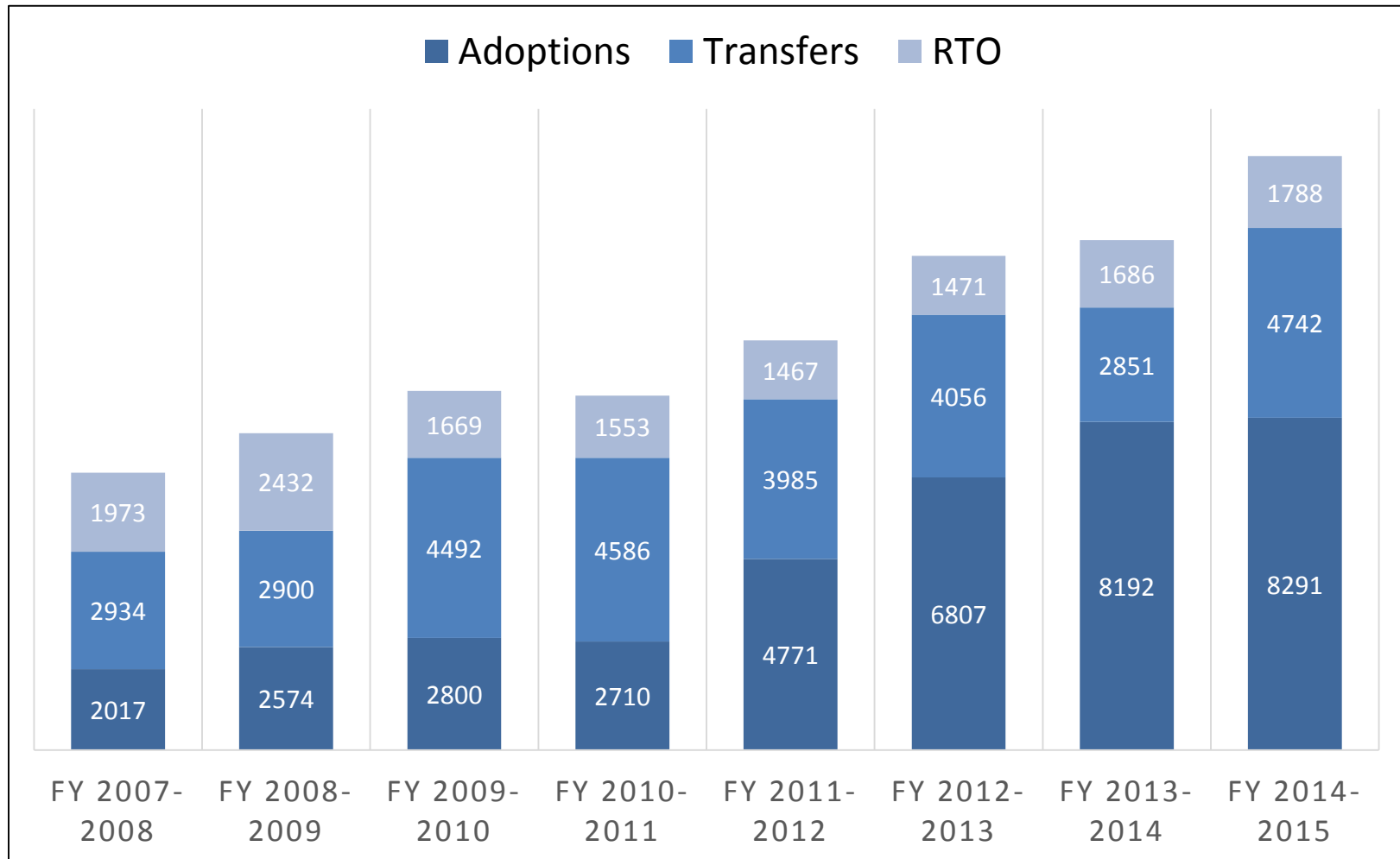
Fiscal Year 2007-2008 thru 2014-2015 Comparison



Source: City of Dallas Animal Services. All statistics include all animals.

Transfers & Return to Owner

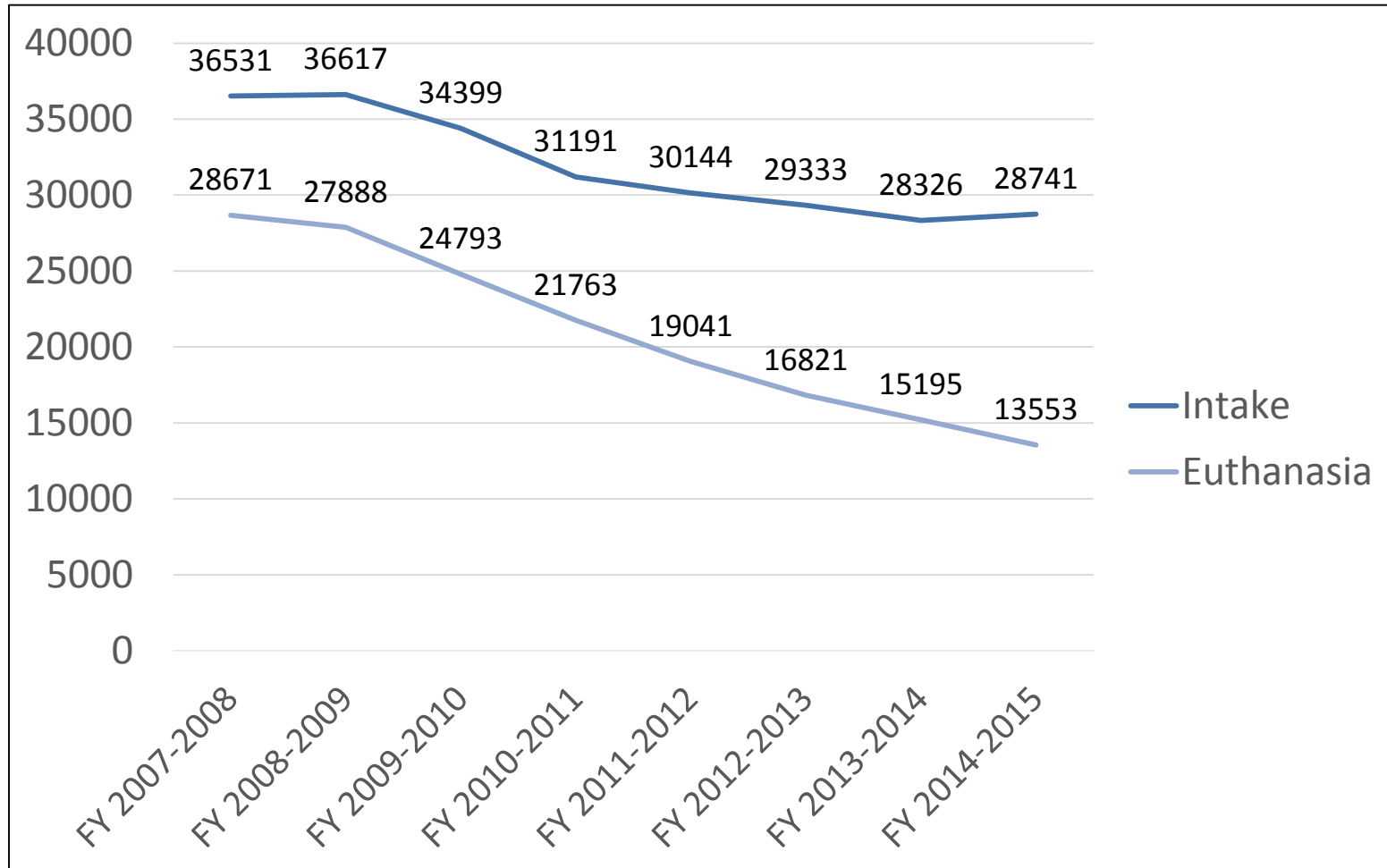
Fiscal Year 2007-2008 thru 2014-2015 Comparison



Adoptions, transfers and returns to owner are all part of calculating live release rates. Innovative shelter programs and community engagement have continued to positively impact our live release rate. Source: City of Dallas Animal Services. All statistics include all animals

Intake & Euthanasia

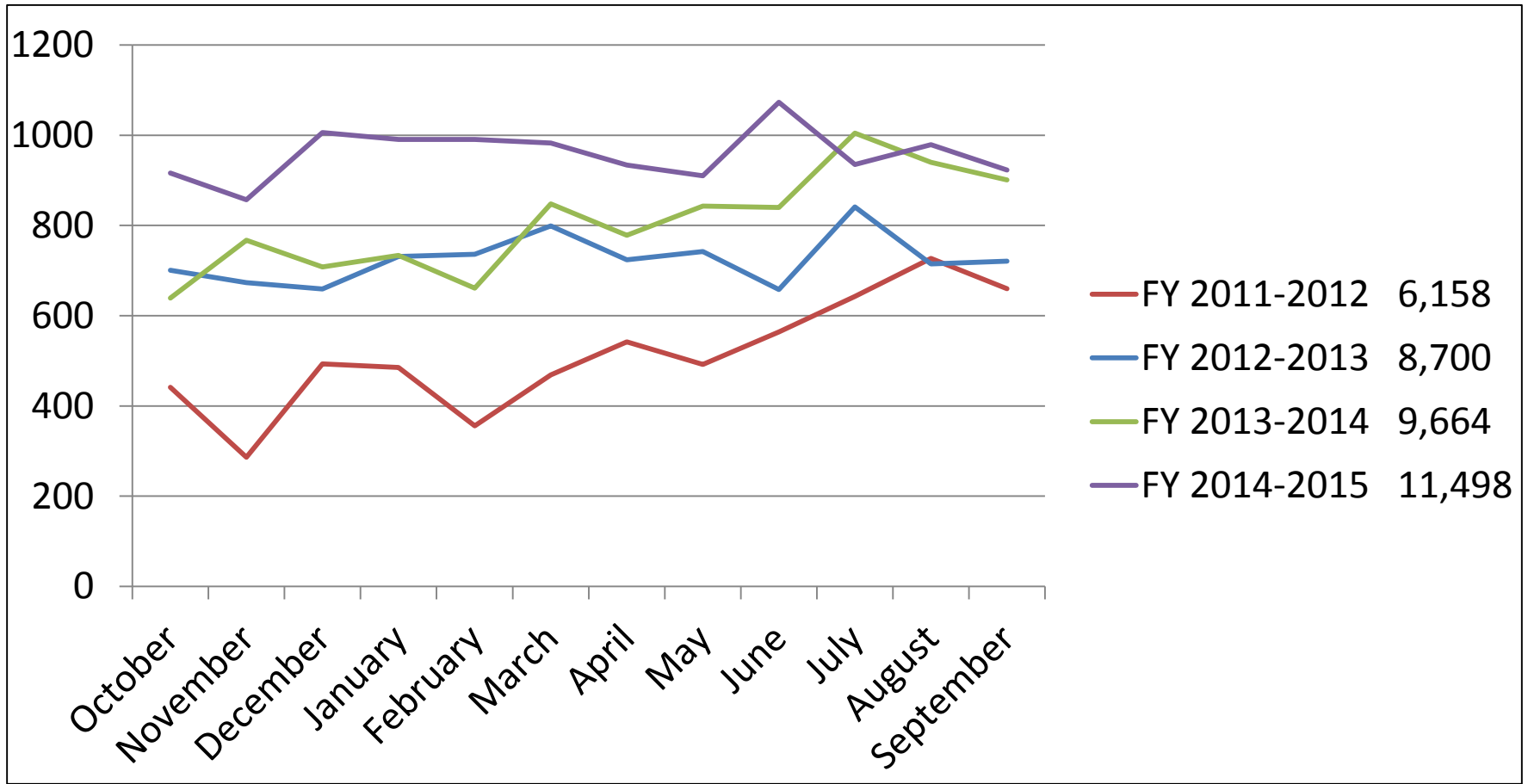
Fiscal Year 2007-2008 thru 2014-2015 Comparison



Aggressive spay/neuter efforts and resources for our residents are paying off. Euthanasia numbers continue to decrease.
Source: City of Dallas Animal Services. All statistics include all animals.

Spay & Neuter Surgeries

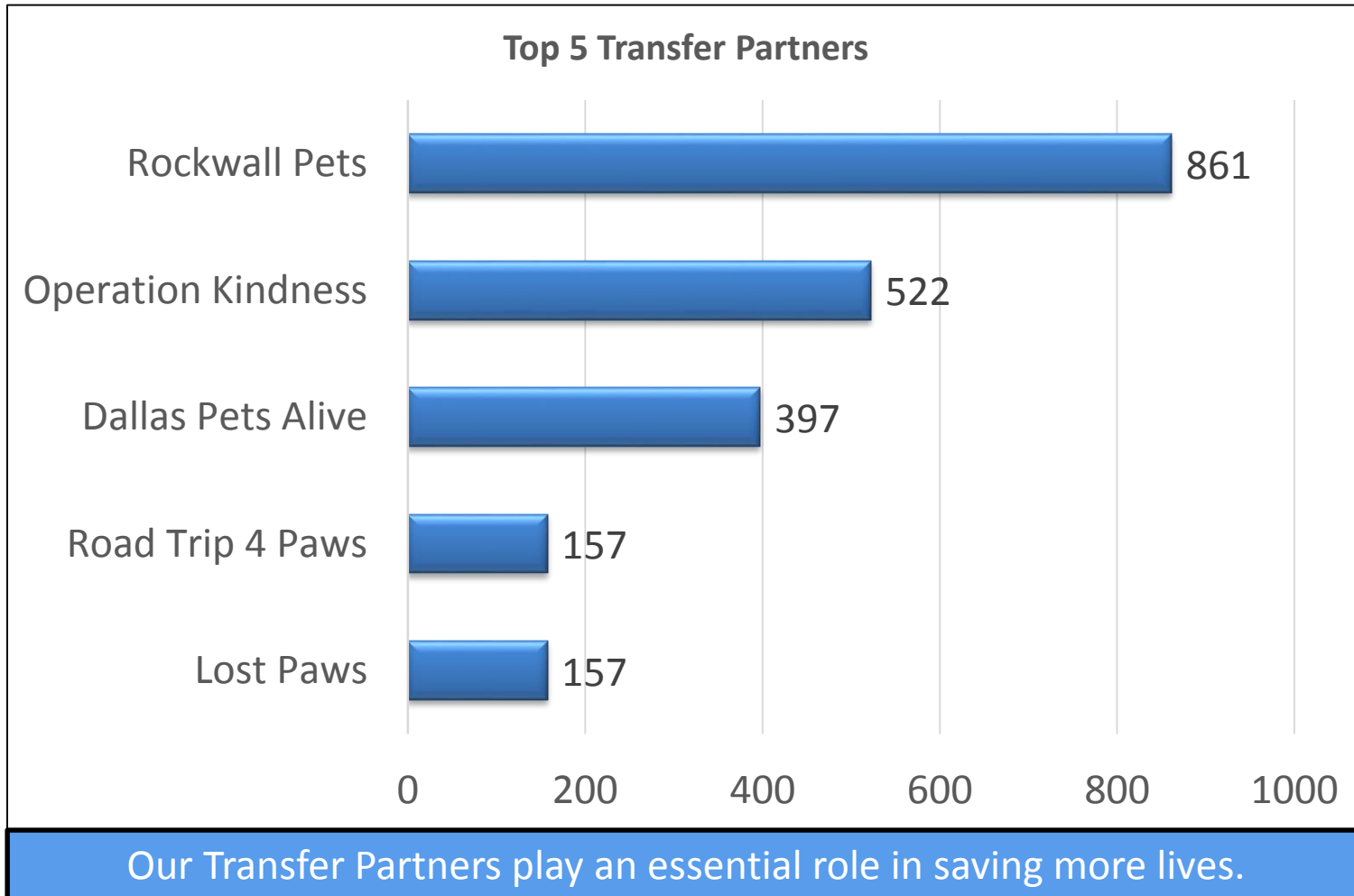
Fiscal Year 2011-2012 thru 2014-2015 Comparison



Spay/Neuter is a key component in creating sustainable change in the battle against homeless pets
Statistics include surgeries on pet at Dallas Animal Services and hosted spay/neuter events. Source: City of Dallas Animal Services.

Transfer Partners

Top Five Transfer Partners, FY 2014-2015



Source: City of Dallas Animal Services. All statistics include all animals.

Our Community

By The Numbers

342.5

The number of square miles our offices are responsible for.

1,257,676

The number of people in our community.

591,107

The estimated number of owned dogs and cats in our community.

47,211

The number of calls for service we answered last year.

153,627

The number of people we served last year.

28,741

The number of animals we took in last year.

79

The average number of animals we took in daily during FY 14-15.



Sources: city-data.com, Dallas CVB, AVMA, and City of Dallas Animal Services, All statistical totals have an acceptable variance of .5% due to database variances in intake and outcome dispositions of the shelter population.