

DALLAS ANIMAL SERVICES

ANNUAL REPORT 2015
CALENDAR YEAR



Calendar Year 2015
Live Release Rate

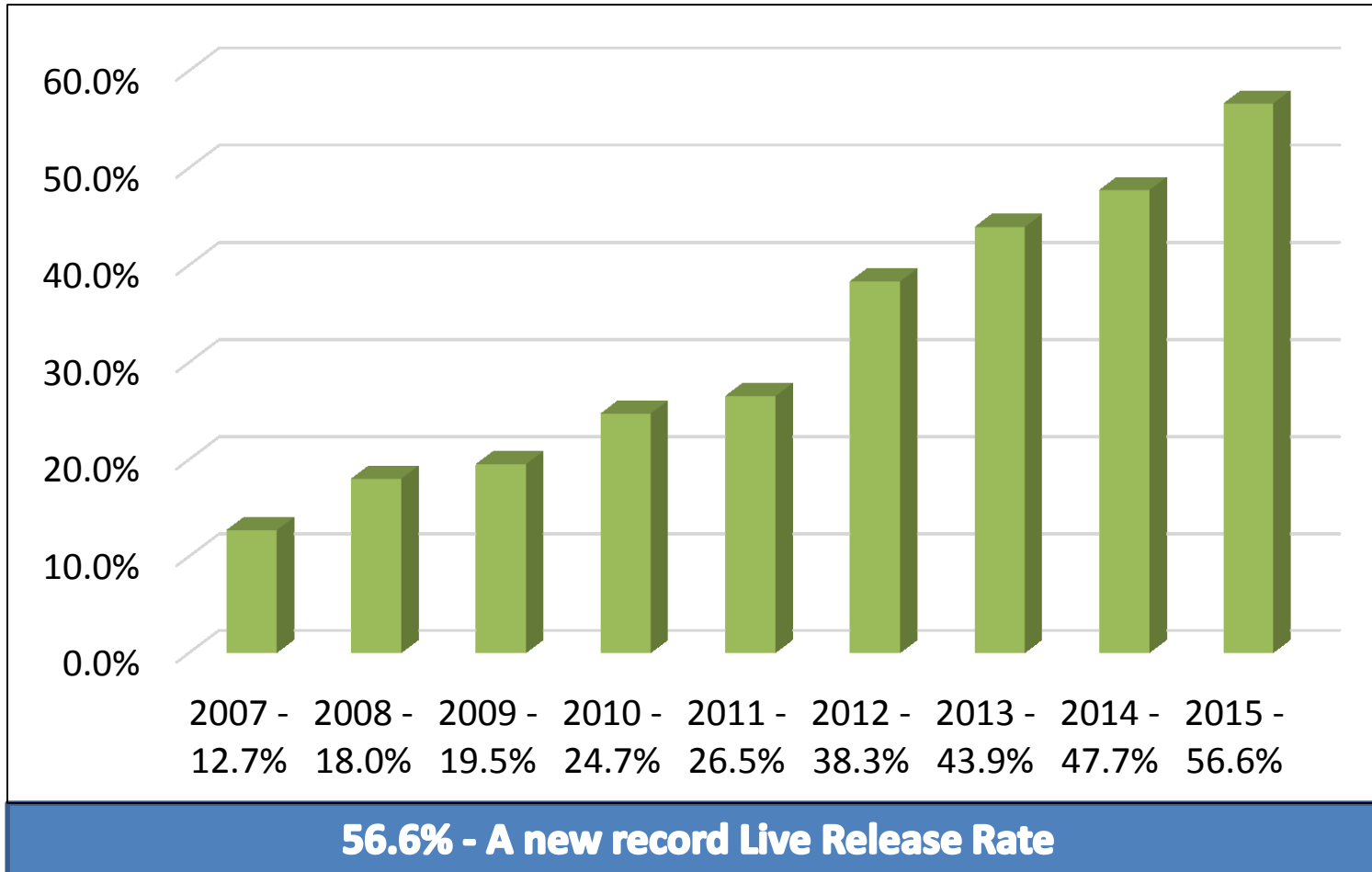
56.6%

A new record!



Live Release Rates

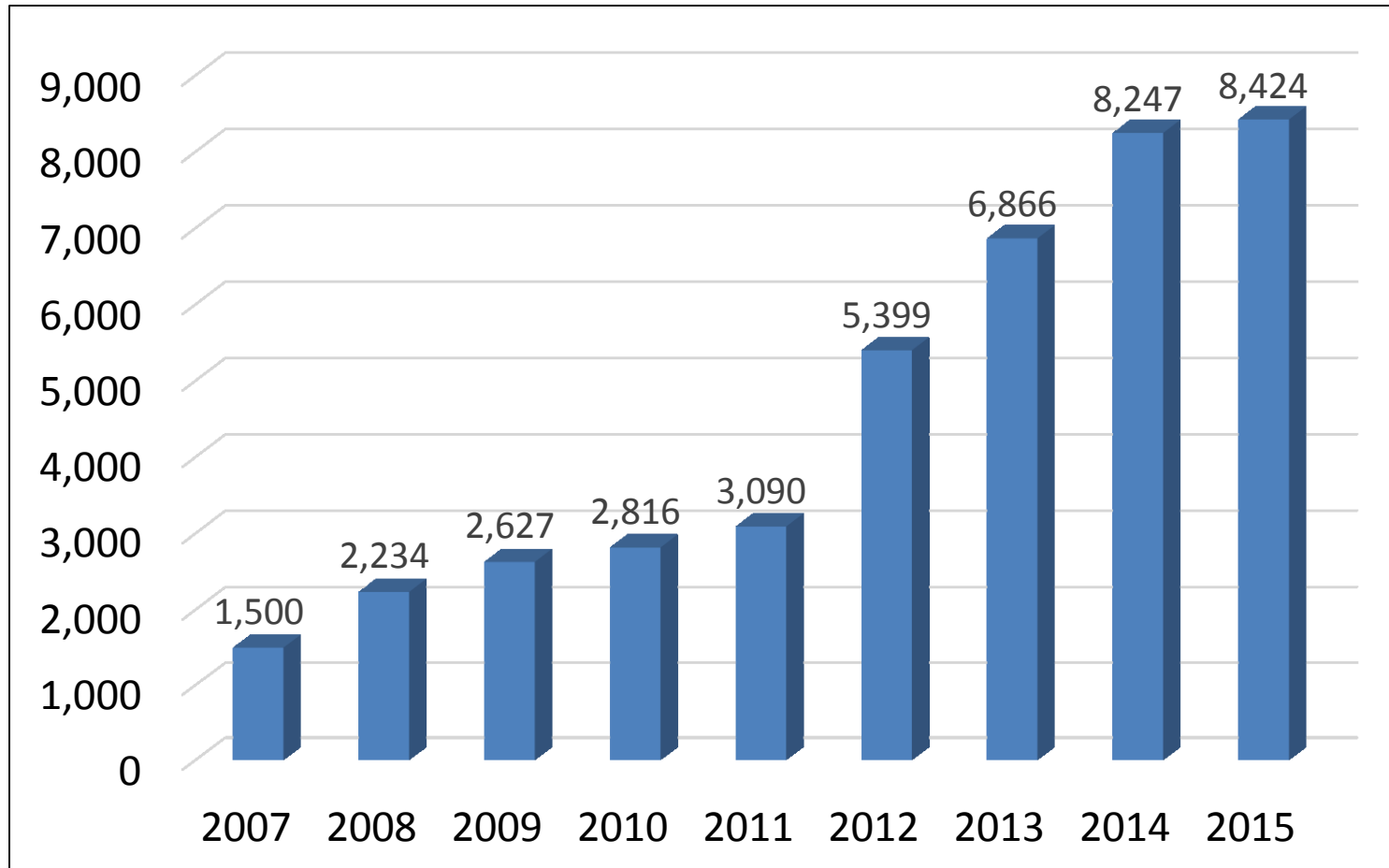
Calendar Year 2007-2015 Comparison



Live Release Rate is calculated by dividing total live outcomes (adoptions, outgoing transfers, return to owner/guardian) by total outcomes less unhealthy owner requested euthanasia. All statistics include dogs and cats only.

Adoptions

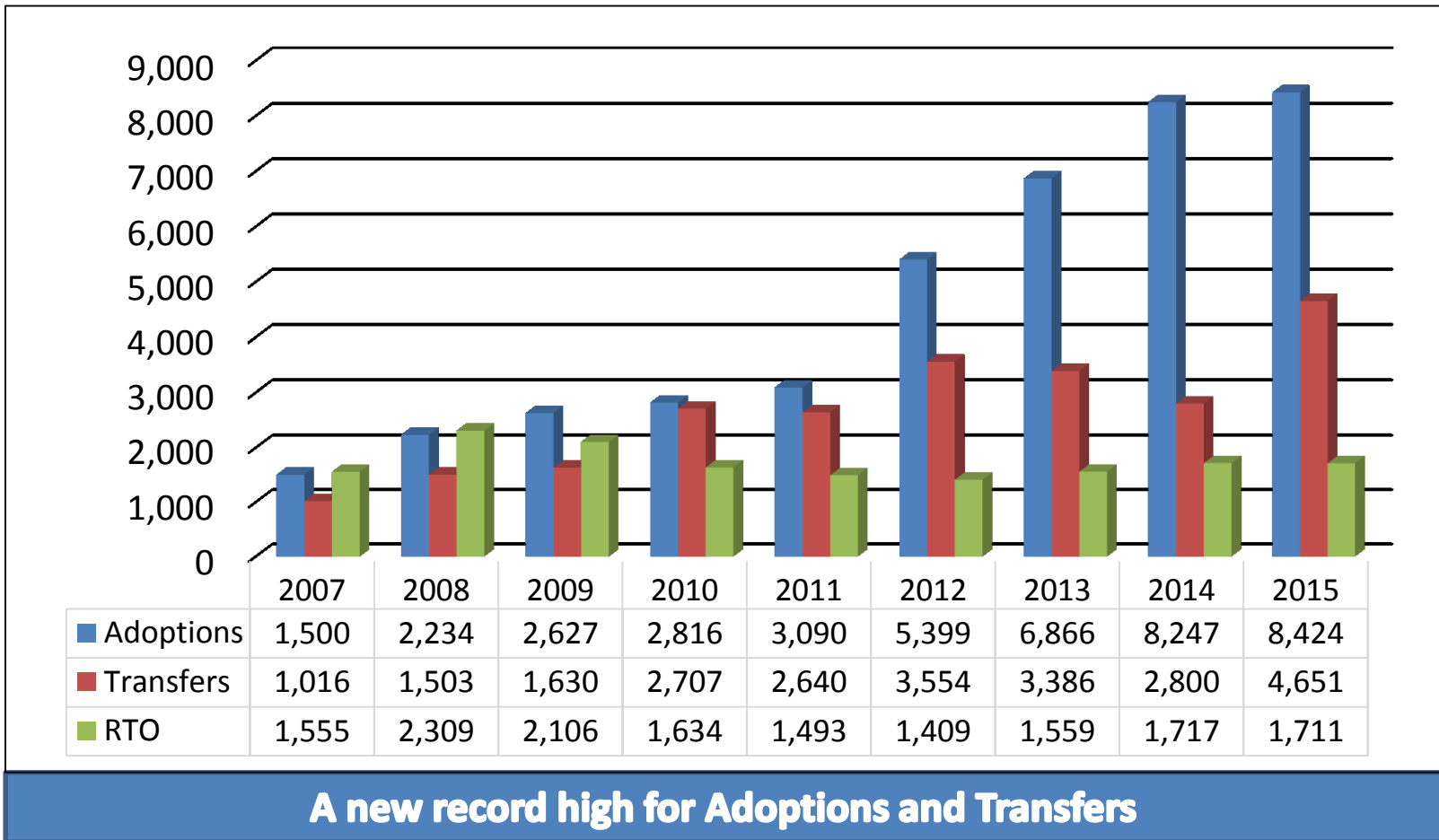
Calendar Year 2007-2015 Comparison



Source: City of Dallas Animal Services. All statistics include dogs and cats only.

Adoptions, Transfers & Return to Owner

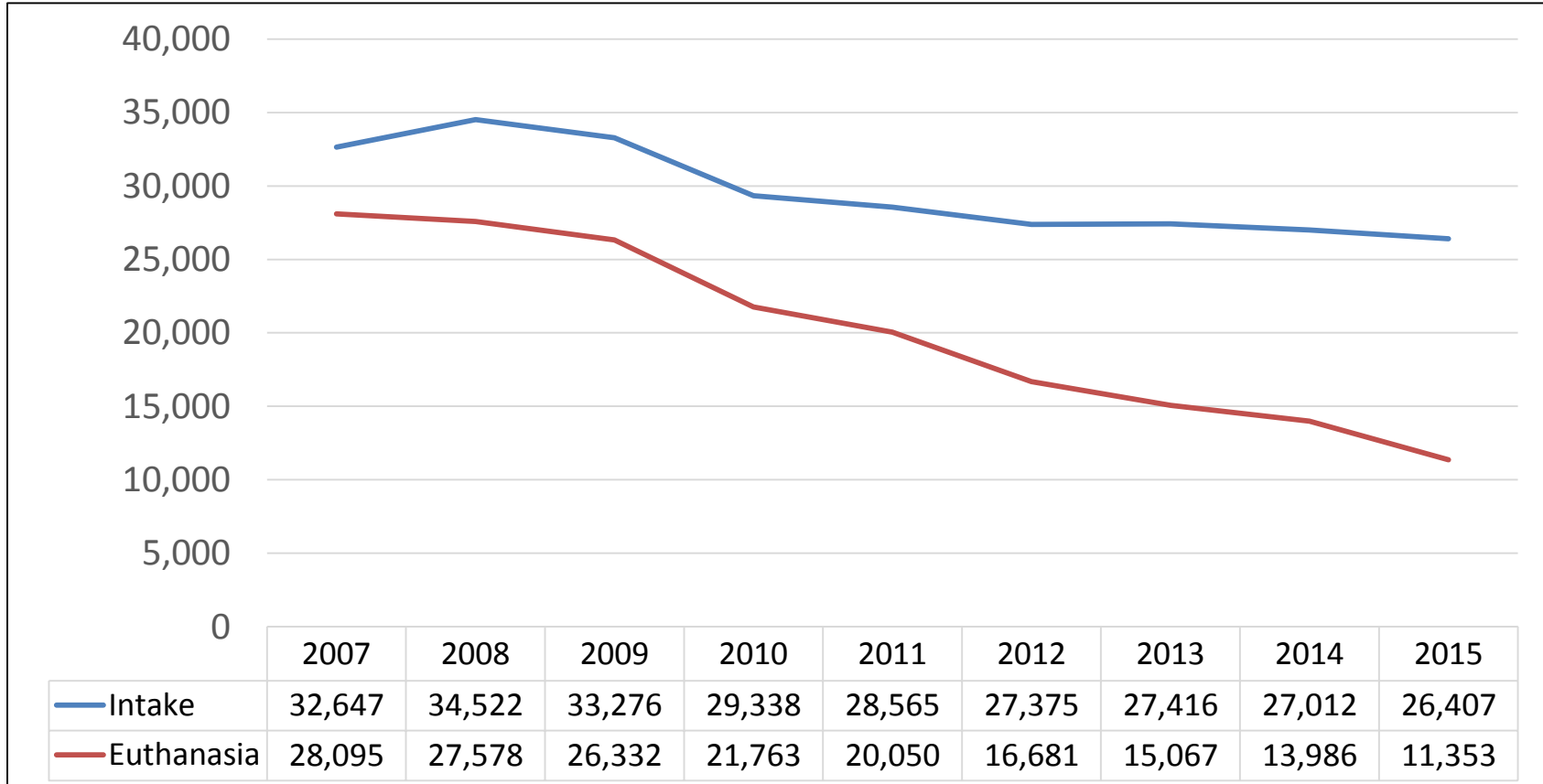
Calendar Year 2007 - 2015 Comparison



Adoptions, transfers and returns to owner are all part of calculating live release rates. Innovative shelter programs and community engagement have continued to positively impact our live release rate. Source: City of Dallas Animal Services. All statistics include dogs and cats only.

Intake & Euthanasia

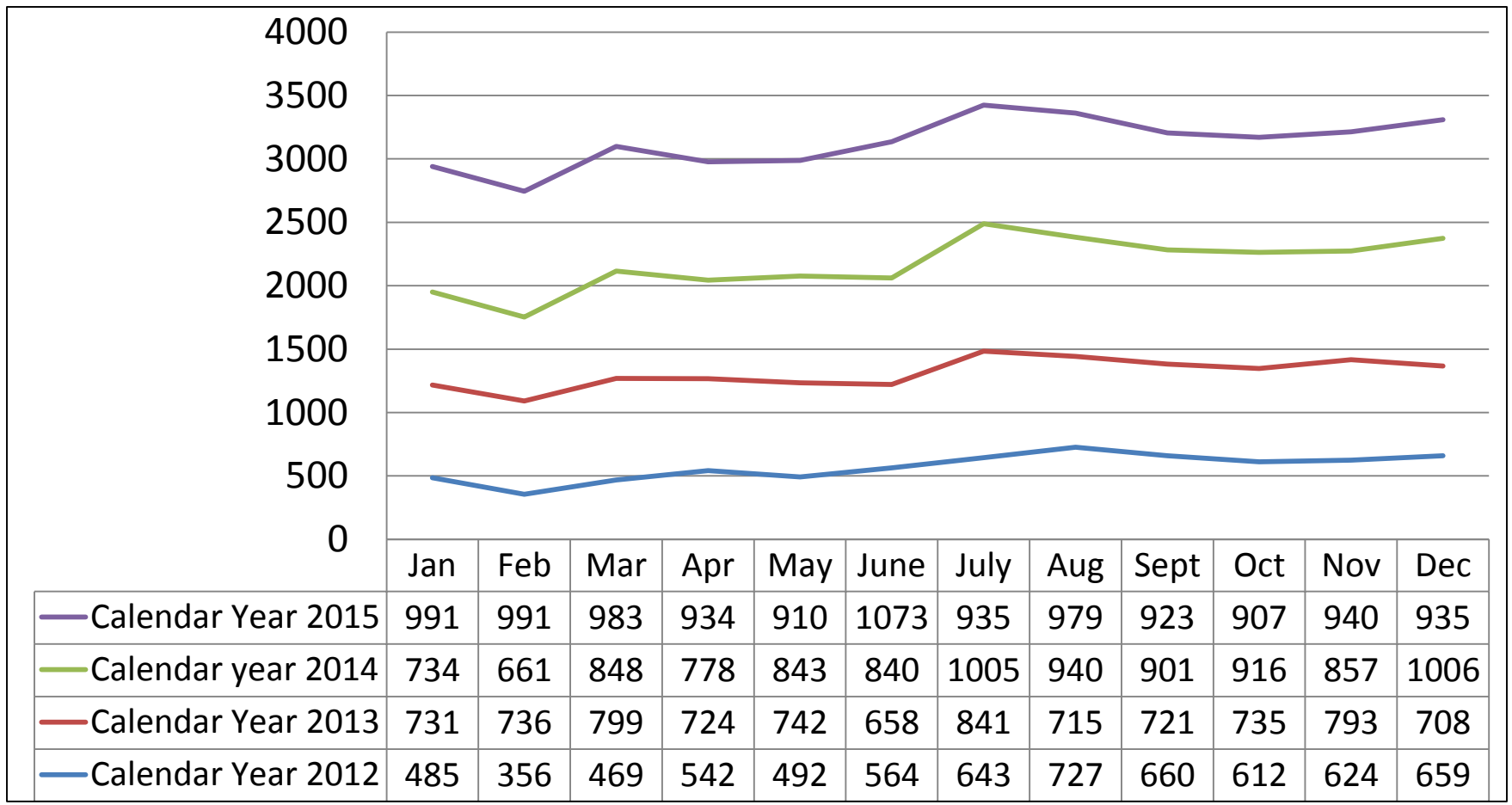
Calendar Year 2007-2015 Comparison



A new record low for Intake and Euthanasia

Spay & Neuter Surgeries

Calendar Year 2012-2015 Spay/Neuter Surgeries at DAS



Aggressive spay/neuter efforts and resources for our residents are paying off. As Spay/Neuter services increase, Intake numbers continue to decrease, as do euthanasia numbers. Source: City of Dallas Animal Services. All statistics include dogs and cats only.

OUR COMMUNITY

By The Numbers

72

The average number of animals we took in each day last year.

26,407

The number of dogs and cats we took in last year.

46,997

The number of calls for service we answered last year.

342.5

The number of square miles our offices are responsible for.

1,257,676

The size of the population we serve.

