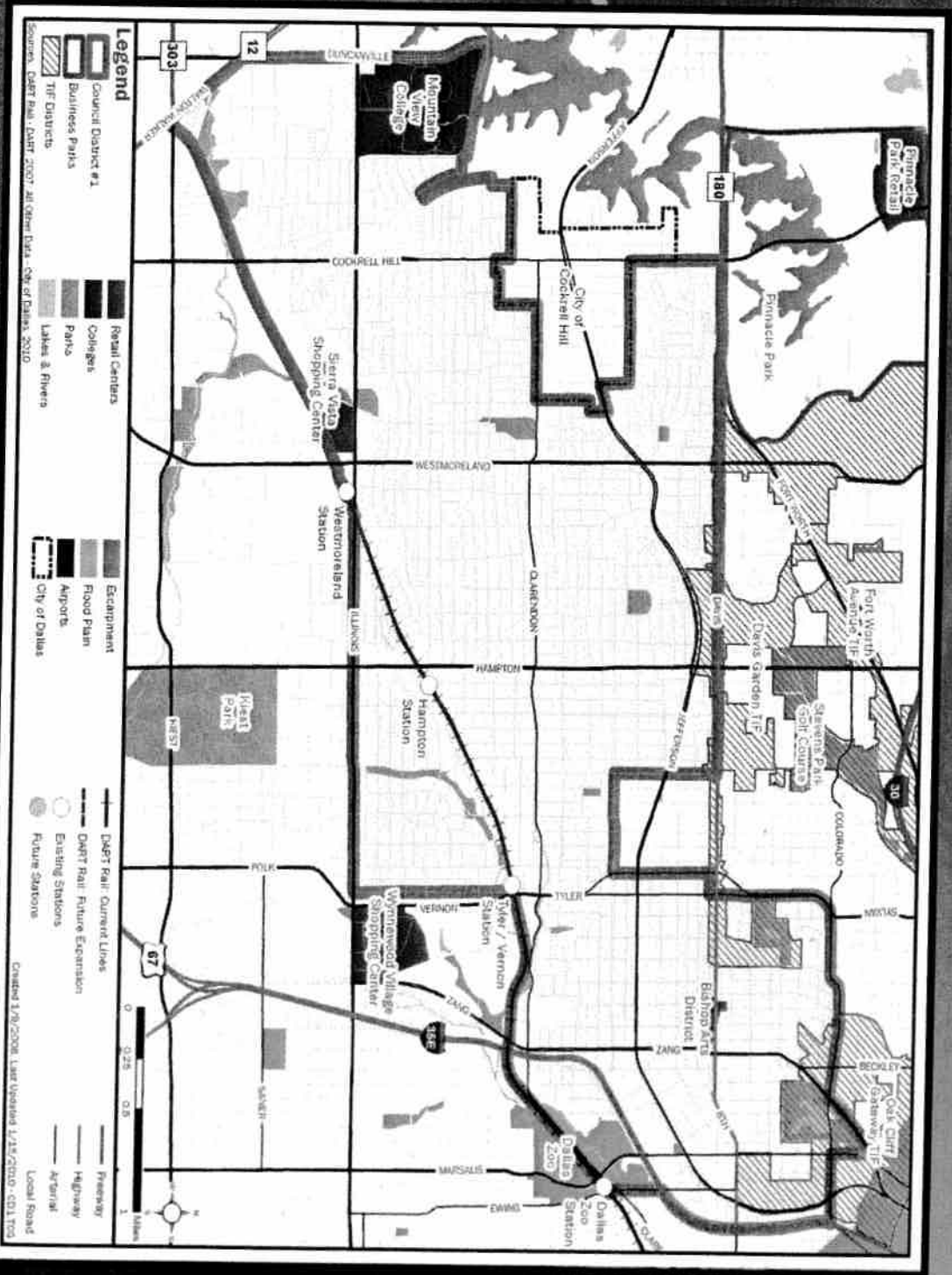


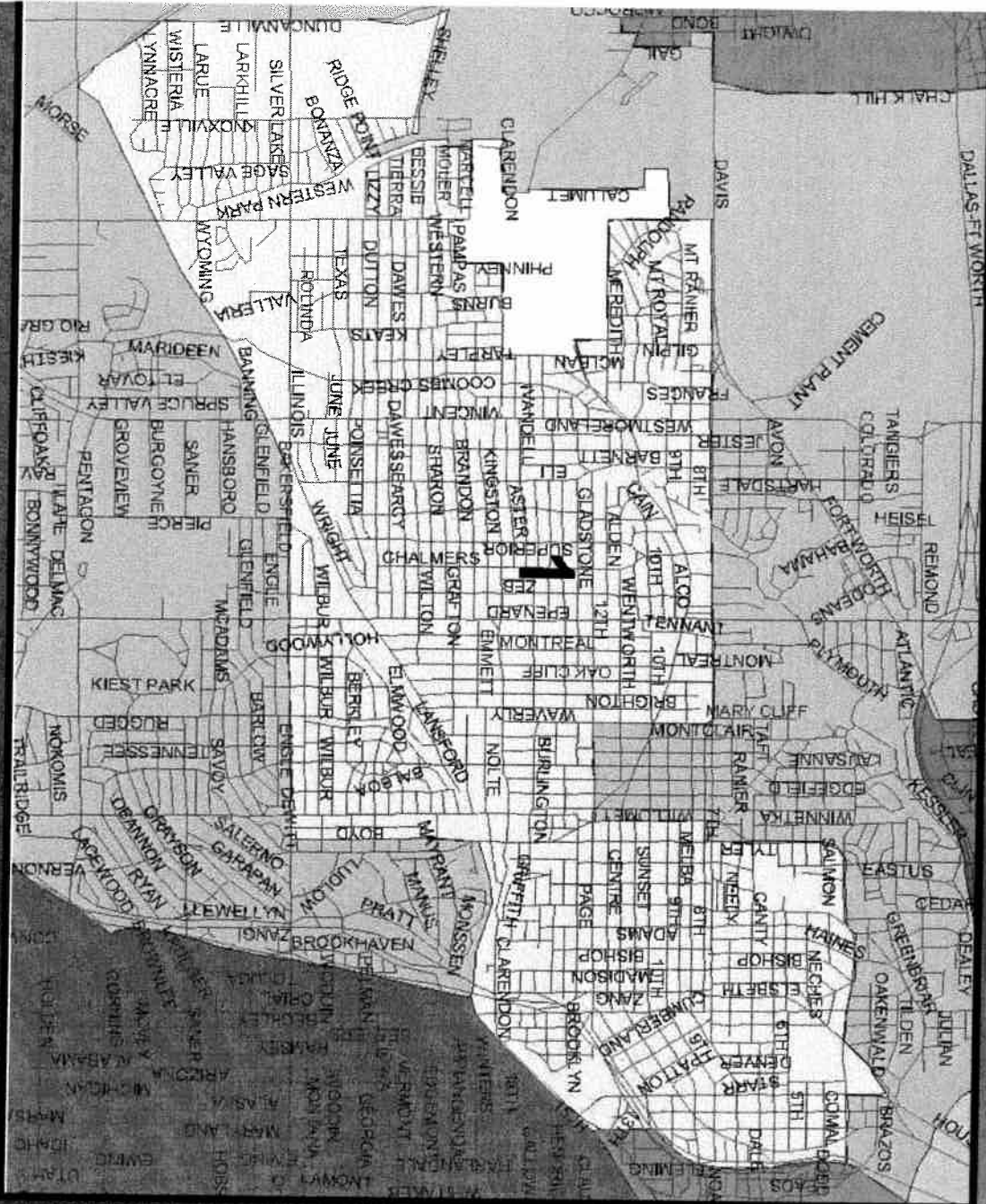
**Redistricting Commission
District Reports
April 5, 2011**

Council District 1 Report

DISTRICT 1: ITS PEOPLE AND LANDSCAPE



DISTRICT 1: STREETS AND POPULATION:



District 1 Population:

*2000 Total Population:
86,379

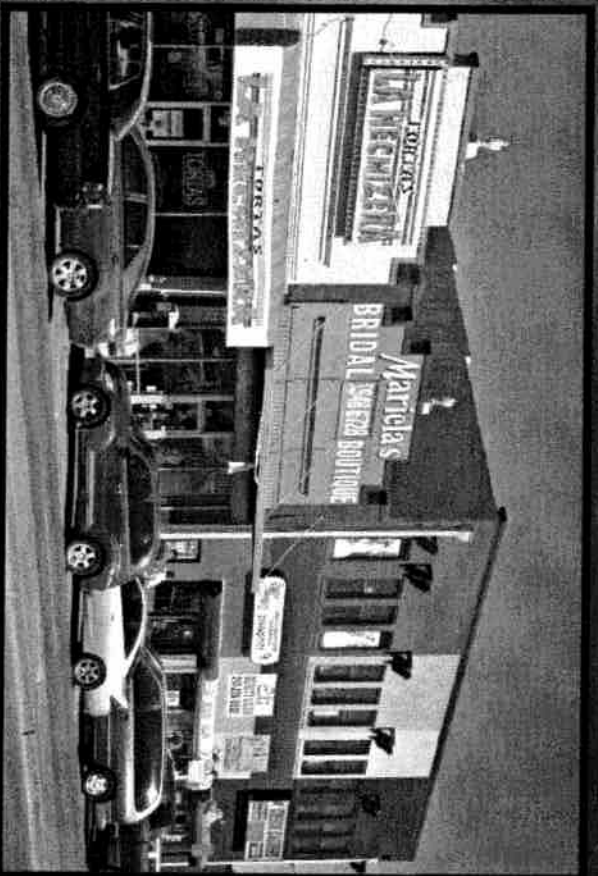
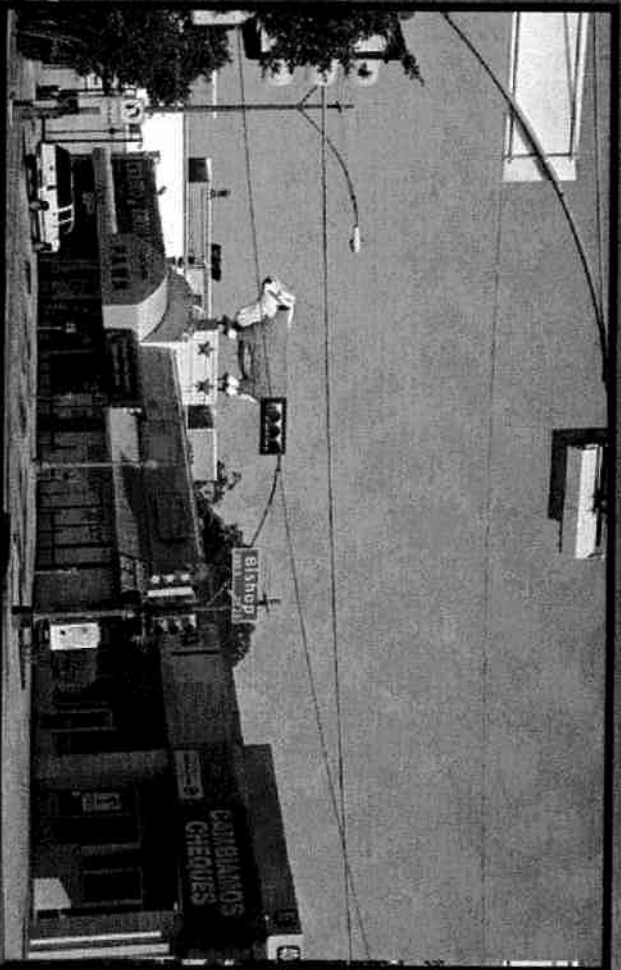
*2010 Total Population:
80,101

*2000 to 2010 Difference:
-6,278 = -7.84%

2010 Voting Age Population
Hispanics-81.86%
Blacks-5.24%
Whites-11.63%

2010 census totals

JEFFERSON BLVD

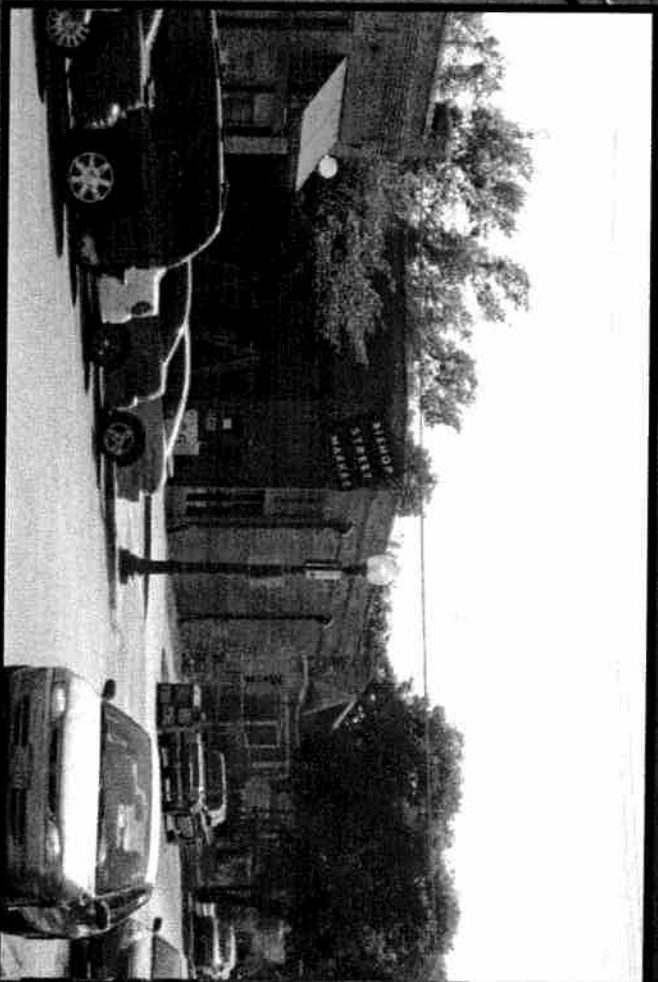
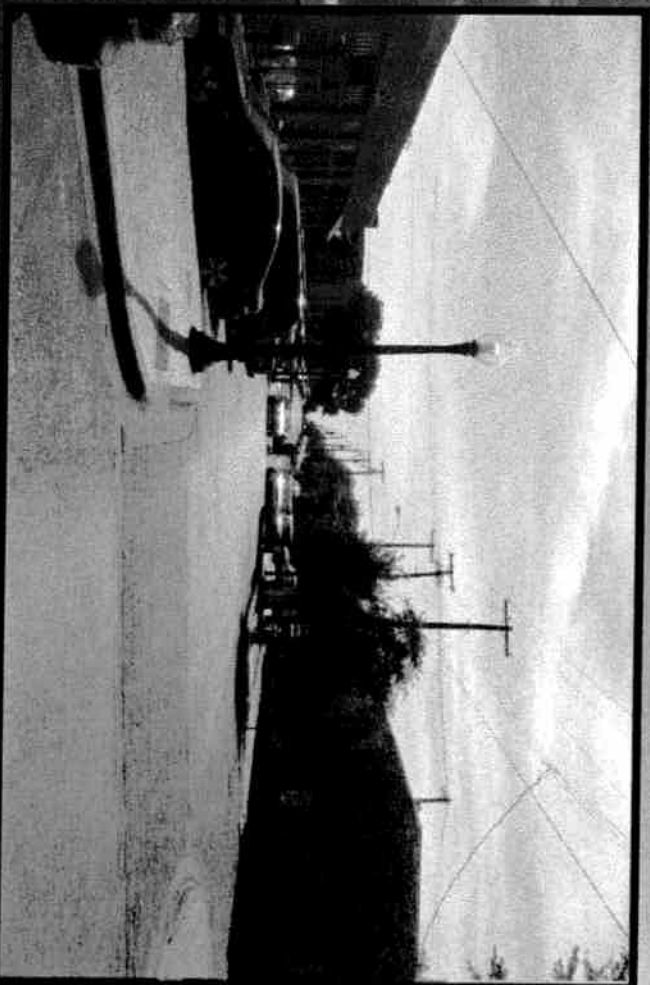
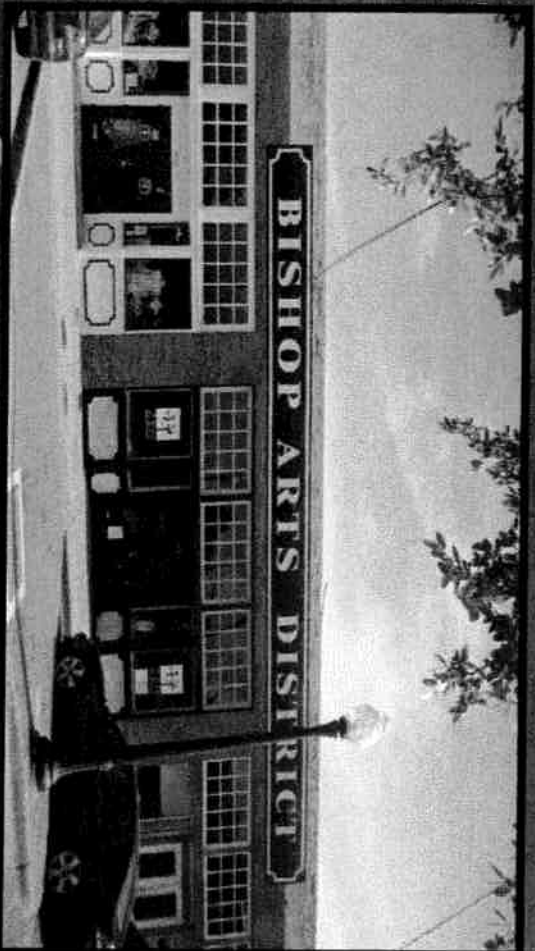


District 1: 2010 Population

- *Hispanic
68,798 = 85.89%
- *Blacks
3,539 = 4.42%
- *White
6,887 = 8.60%
- *Other
877 = 1.01%

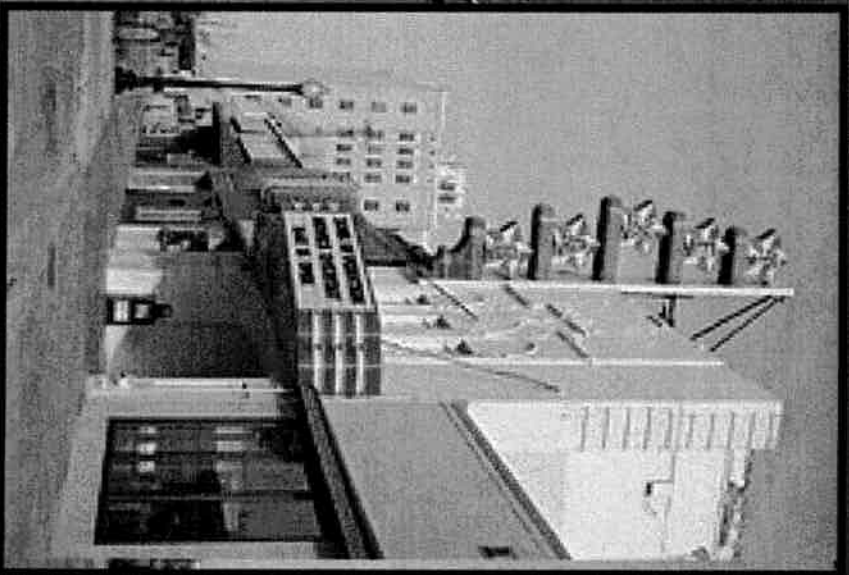
2010 census totals

BISHOP ART DISTRICT



Economic growth continued in the Bishop Arts District with the opening of Café Brazil, Casa Blanca Mexican restaurant, and the announced relocation and expansion of Gloria's flagship restaurant.

DISTRICT 1-WITHSTANDING THE TEST OF TIME:
TEXAS THEATER, KESSLER THEATER AND
OAK CLIFF CULTURAL CENTER



District 1 Vs City of Dallas

Jobs / Acre
2.2 Vs 4.9

Population /Acre
11.1 Vs 6.0

Property Tax Base / Acre
\$225K Vs \$337K

Size

10.1sq. mi. Vs 342 sq. mi.

Median Age
28.9 Vs 33.1

Median Household Income
\$41K Vs \$48K

Median Household Size
3.7 Vs 2.7

Median Home Value
\$62K Vs \$88K

Poverty Rate
21.9% Vs 17.4%

District 1: Education

Elementary Schools

- James Bowie
- Leslie A. Stemmons
- Leila P. Cowart
- L. O. Donald
- James S. Hogg
- Arturo Salazar
- Margaret B. Henderson
- John F. Peeler
- Lenore Kirk Hall
- Lida Hooe
- Anson Jones
- George Peabody
- John H. Reagan
- Felix G. Botello
- Winnetka
- Maria Moreno

Middle Schools

- Hector P. Garcia
- L. V. Stockard
- W. E. Greiner
- Middle School and Exploratory Arts Academy

High Schools

- W. H. Adamson
- Sunset
- Early College High School
- Mountain View

Highest Level Attained 2009 Estimate

District Vs City of Dallas

Some School, No Diploma

51.0% Vs 28.6%

High School Graduate

23.4% Vs 22.5%

Some College, No Degree

11.8% Vs 16.6%

Associate Degree

3.1% Vs 4.8%

Bachelor's Degree

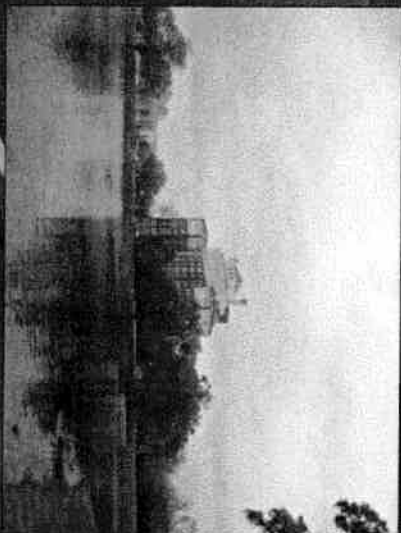
6.7% Vs 18.1%

Graduate Degree

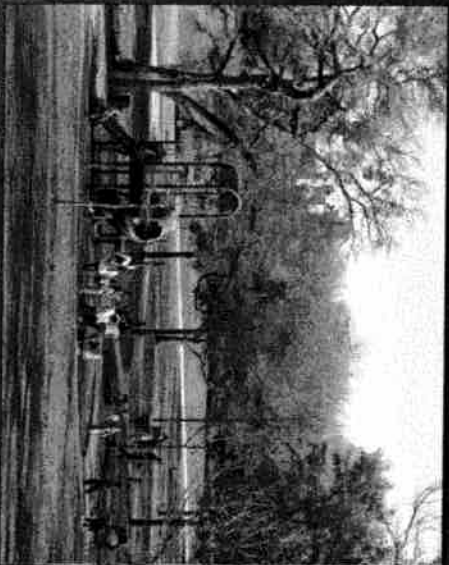
4.1% Vs 9.5%

DISTRICT 1: PARKS

Lake Cliff



Kidds Springs



Martin Weiss



Developers of the Lake Cliff Tower condominium conversion project announced in December that they have sold out all 53 units in the building.

**CITY OF DALLAS DEMOGRAPHICS
AND
FAIR REPRESENTATION**

Demographics	Fair Representation <small>(based on 14 council seats)</small>
Hispanic 42%	5.88
Black 25%	3.5
White 29%	4.06
Asian 3%	.42

Resources

- http://dallascodev.org/SiteContent/66/documents/resources/factsheets/CD_1factsheet.pdf
- <http://www.flickr.com/photos/traveller2020/4806374040/in/photostream/>
- <http://www.city-data.com/forum/dallas/380980-oak-cliff-photos.html>

Council District 9 Report

Dallas City Council District 9 – 2011 Profile

District 9 is one of the city's most compact districts. The current population exceeds the 2010 population requirement of 85,558 by 2,515 people.

The focal point and economic engine of District 9 is White Rock Lake. Neighborhoods understand the value of the lake to quality of life as well as home values. In recent years some established neighborhoods outside of District 9 have changed their historic name to incorporate "White Rock" or "Lakewood" in their new name to add value.

Equal to White Rock Lake is the community's support of education, both public and private. Woodrow, BA, the middle schools and elementary schools, Dallas Academy, St Johns, Lakehill, St Thomas (on the edge of Dist 9) and St Pius all have active constituencies. Woodrow recently announced the implementation of International Baccalaureate degree program (IB) which has the real potential of transforming public education in East Dallas by renewing interest in all the schools in the feeder pattern.

The people of District 9 are committed to conserving the environment and take pride in being home to Dallas' Garden & Lake District.

Neighborhoods are organized, active and work for the betterment of East Dallas. A group of 16 neighborhood leaders several years ago created the *Garland Road Vision* which is an Urban Plan for maintaining the quality of life while planning for proper growth and development for the decades to come.

A decade ago a group of six community leaders met to plan Dallas' first Dog Park. Although many said it wouldn't work, within 90 days the parking lot had to be doubled to accommodate the cars. Today, the Dog Park on Mockingbird Lane is one of the city's most popular parks and was created through private donations.

Three shopping centers anchor the district, Casa Linda, Casa View and Lakewood. The YMCA @ White Rock is actively supported by the families and kids throughout East Dallas as is Doctors Hospital @ White Rock for emergency and medical services.

The intersection of Gaston, Garland and East Grand at the south end of the district is a prime redevelopment site where the YMCA would serve as an anchor tenet. The new Lochwood Library at the north end of the district will serve as catalyst for new development for the surrounding neighborhoods.

District 9 needs to shed 2,515. The first area of opportunity would be restoring the Vickery Meadow neighborhood on the far northwest end of the district (to assist District 13 with its population deficit).

Residents of several small neighborhoods have approached the District 9 commissioner and council member about moving to District 9 because they have a White Rock or Lakewood orientation.

Redistricting Goals: Keep the district compact, neighborhoods whole, White Rock Lake as the core and add smaller neighborhoods that have a lake orientation.

Council District 10 Report

*Remarks by Donna Halstead re District 10
Before the City of Dallas Redistricting Commission
April 5, 2011*

Demographic Data

	<u>2000</u>	<u>% of Total</u>	<u>2010</u>	<u>% of Total</u>	<u>% Change</u>
Total	88,902		79,588		-10.5%
Anglo	42,957	48.3%	31,378	39.4%	-27.0%
Black	25,782	29.0%	25,445	32.0%	- 1.31%
Hispanic	12,487	14.0%	17,827	22.4%	42.8%
Other	--	--	4,938	6.2%	

As you can see from the above numbers, District 10 is significantly smaller than in 2000. This is a direct result of the demolition of approximately 5,000 substandard apartments in the district.

With a 10% drop in voting age population, District 10 is also much younger overall. I believe this can be attributed to the fact that we are in the Richardson Independent School District, and specifically the Lake Highlands High School attendance zone. Young families of all ethnicities are buying houses in the community in order to have their children in neighborhood schools. RISD is a majority minority district with consistently high ratings on state and federal matrixes. There are actually more RISD students in Dallas than in Richardson with the preponderance of Districts 10, 11 and 12 all being in RISD. The district continues to invest in its schools and has on the ballot for May, a \$150 million bond package to fund technology improvements throughout the district.

The average price per square foot of homes in Lake Highlands has increased from approximately \$80.00 per square foot in 2000 to \$110.00 per square foot in 2010. That is a 30% increase over the decade as compared with a 14% increase in East Dallas/Lakewood and slightly over a 25% increase in the Park Cities and Preston Hollow.

Challenges in 2001 included substandard apartments and retail centers and a significant increase in the number of economically disadvantaged families.

Progress made since 2001:

- Major renovation of the shopping center at Skillman and Walnut Hill
- Creation of a Tax Increment Financing District (Skillman Corridor)
- Redevelopment of Northwest Highway and Skillman
- Redevelopment at Forest and LBJ (new Walmart)
- Demolition of apartments and development of a Master Plan for a Town Center at Walnut Hill and Skillman
- Demolition of abandoned apartments on Northwest Highway and construction of senior housing
- New construction in planning:
 - ✓ Lake Highlands Town Center Phase I (construction expected to begin late summer)
 - ✓ Demolition of a portion of the shopping center at Audelia and Walnut Hill and development of 20 upscale homes (\$650,000 +) with the remainder of the center undergoing major renovation
- Organizations within the community:
 - ✓ Lake Highlands Family YMCA – over 1,000 families involved
 - ✓ Lake Highlands Women’s League - raises almost \$200,000 annually with most of the money given to students at Lake Highlands High School in form of scholarships

- ✓ Lake Highlands Exchange Club - raises over \$200,000 annually to provide scholarships to deserving students at Lake Highlands High School
- ✓ Lake Highlands Junior Women's League (a new group created since last census) - approximately 100 members, all younger than 35, who raise funds for improvement at neighborhood parks
- ✓ Numerous homeowners associations (at least 15)
- ✓ Lake Highlands Area Improvement League.