



Pemberton Hill Target Area

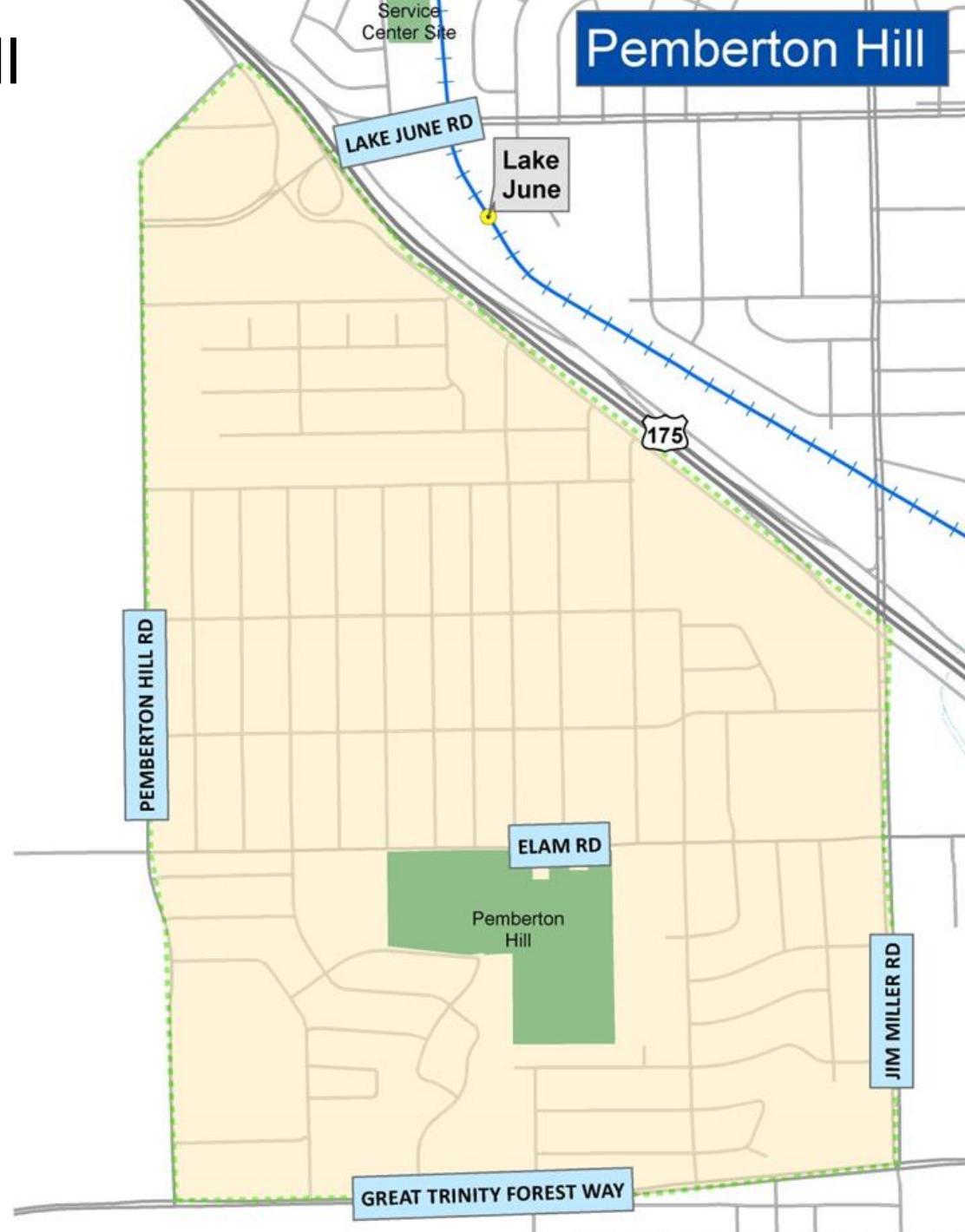
District 5

Councilmember Callahan

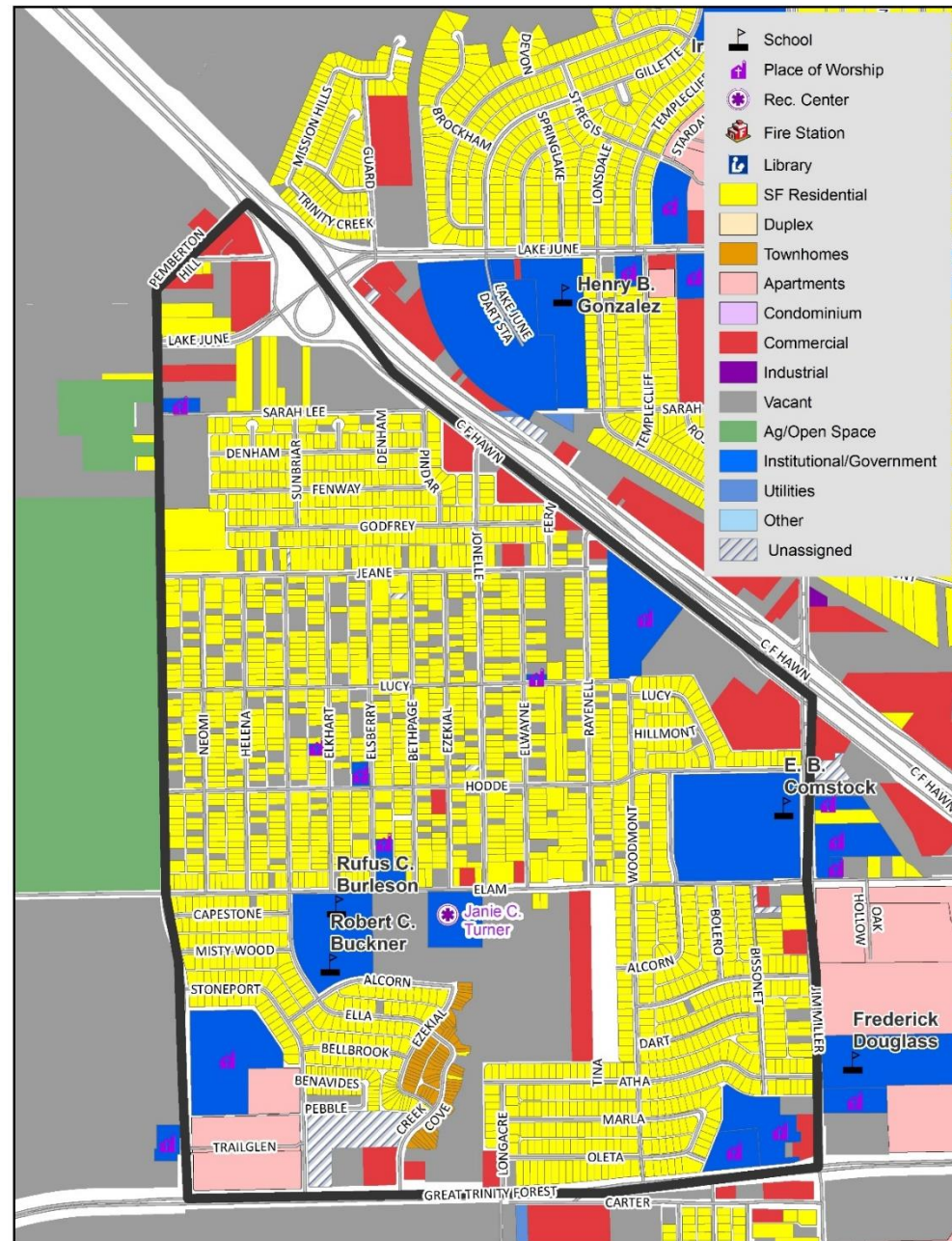
June 2016



Pemberton Hill Target Area Boundary Map



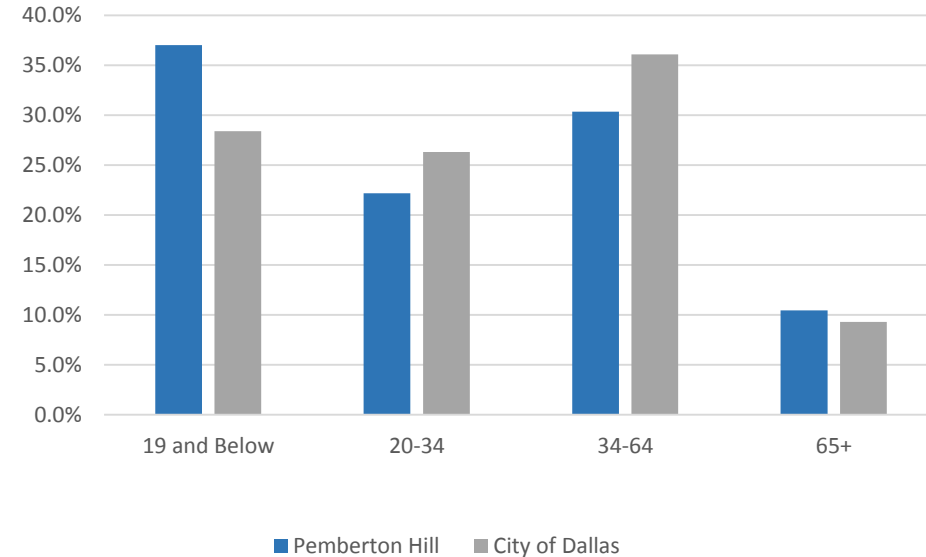
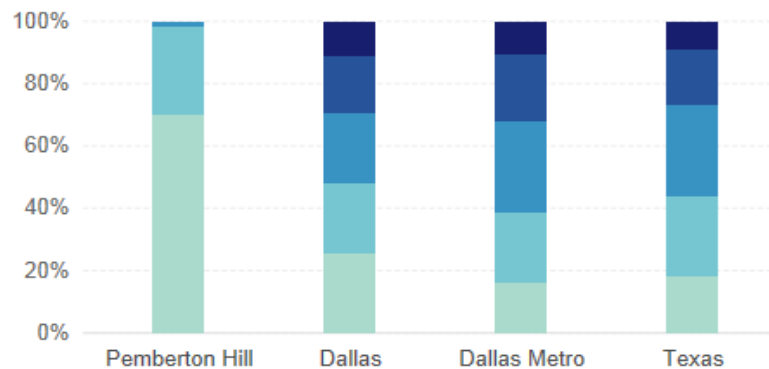
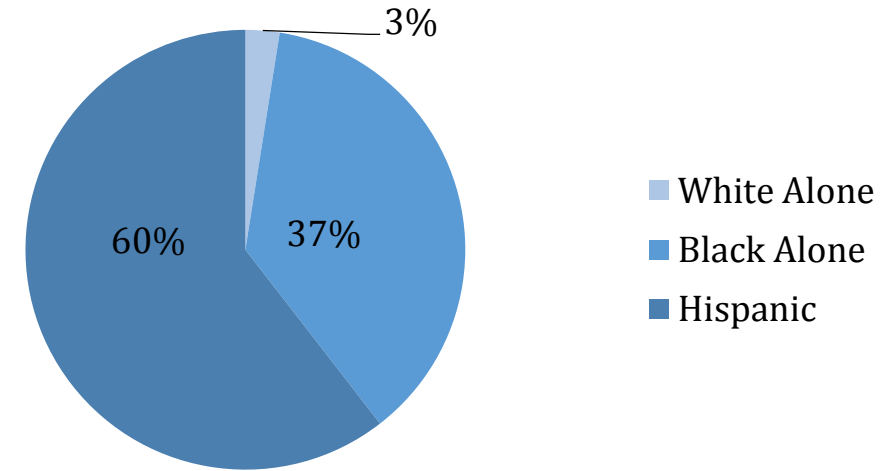
Pemberton Hill Target Area Land Use Map



* Source: DCAD 2015

Pemberton Hill Demographics

- **Total Population:** 6,991
- **Age**
 - Generally young population, 37% below 19 yrs
 - Households with children concentrated in the center, close to the schools
- **Race/Ethnicity**
 - Predominantly Hispanic (60%) then African American (37%)
- **Educational Attainment**
 - Low educational attainment
 - High school graduation rate 50% (city 74.3%)
 - Bachelors degree or higher 1.5% (city 32%)



■ No High School
 ■ High School Degree
 ■ Associate's Degree
■ Bachelor's Degree
 ■ Graduate Degree

* Source: 2010-2014 5 year ACS Estimates

Housing Overview

- **Housing Type**
 - Predominantly single family, apartments to the south western corner
- **Housing Tenure/Occupancy**
 - High homeownership rate 57% (citywide 43%)
 - Apartments in the southwest corner
 - Single-family rental homes concentrated in the western segment
 - Vacancy rate 12.3% (citywide 11.2%)
- **Housing Conditions**
 - Large percent in average condition
- **Property Value**
 - Property value decrease slightly throughout whole target area
- **New Construction/Improvement Activity**
 - 2 single family homes constructed from 2012-2014
 - High value home improvements in southern section