

Applicable Urban Design Priorities Project Should Achieve

- [1] Further refine the design of gateway at the end of Hi Line Drive to create a public gathering space for the neighborhood -

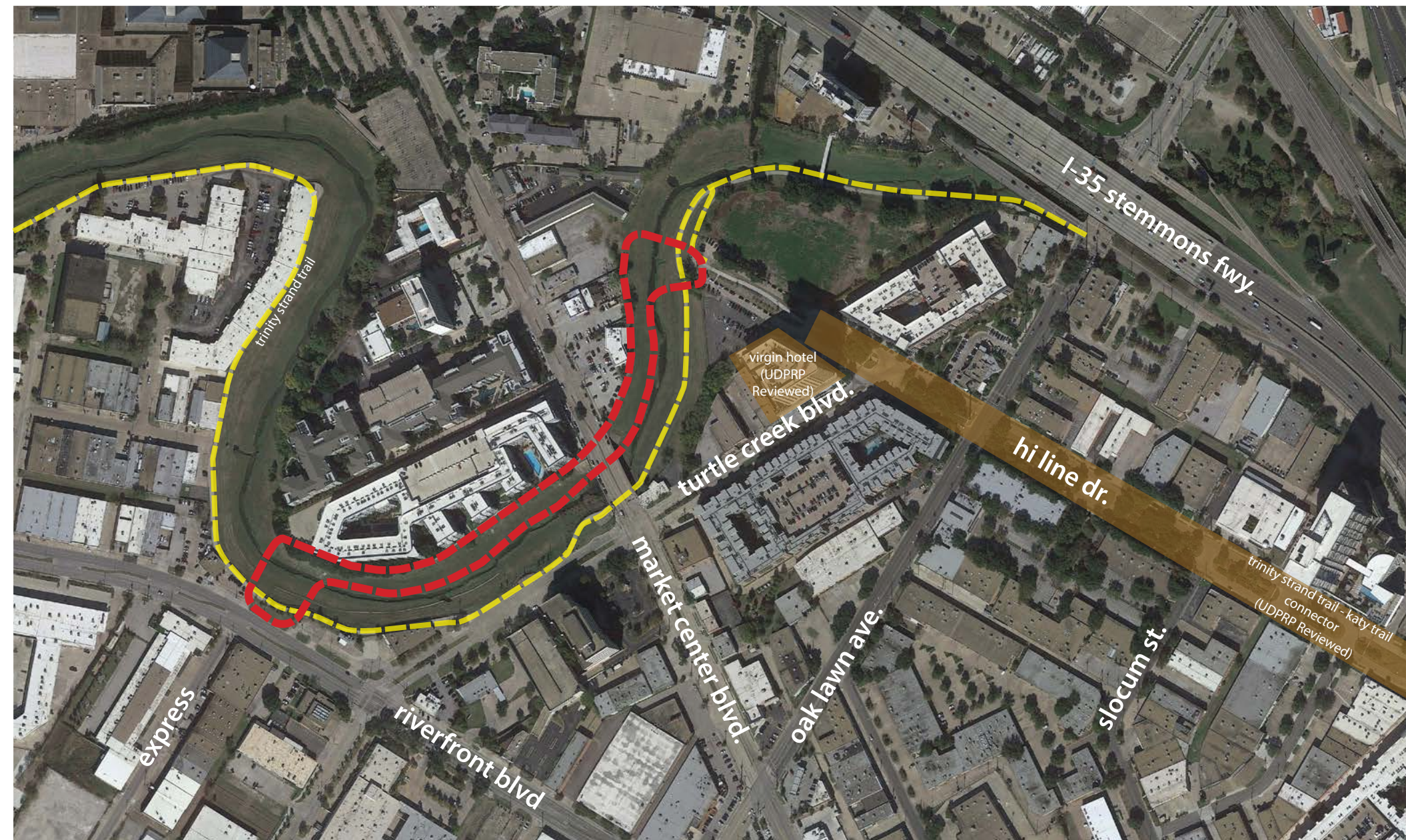
The landing of the bridge at the end of Hi-Line Drive will serve as a signature moment as the terminus for Hi-Line Drive, while also serving as a critical space that will be traversed by users of the existing Trinity Strand Trail, the new extension of the Trinity Strand Trail, and users of the Katy Trail-Trinity Strand Trail Connector. This space should provide adequate shade, seating, and public art to effectively function as a point of triangulation for the district.

- [2] Consider the design of bridge to serve as an architectural moment in this district while also providing safety, shade, and functionality -

As already expressed by members of the Design District TIF Board, this bridge can serve not just as a physical connector to the north side of the sump but can also function as recreation space. As such, the design of the bridge and the spaces around the bridge should be designed to provide elements people desire in well-designed public spaces.

- [3] Design the trail along the north side of the waterway to facilitate future development to interact with the trail and with the water and open space -

Understanding the constraints that exist in terms of operating inside existing City-owned right-of-way, the design of the new trail should allow for current buildings or new development that might occur in the north side to seamlessly interact and connect to the trail, much in the way development interacts with the Katy Trail in Uptown.



Policy References

Forward Dallas!
Section 5 [urban design element]

TIF Urban Design Guidelines
Part III, Part IV [Design District]

Context Description

The Trinity Strand Trail Bridge and Extension is a 0.4 mile long extension of the existing Trinity Strand Trail on the northern banks of the former Trinity River riverbed in the Design District. The proposed project will construct a bridge across the existing waterway at the end of Hi Line Drive, providing a more direct connection from existing uses on the east side, including the Virgin Hotel, to uses on the west side, including the Rodeo Goat restaurant. The project will also construct a trail along the northern side of the sump from the bridge, west to Express Street.

Design considerations for the project include the treatment of the landing of the bridge at the terminus of Hi Line Drive, the design of the bridge structure itself, and the design of the trail along the northern side of the riverbed.

Trinity Strand Trail Bridge +Extension

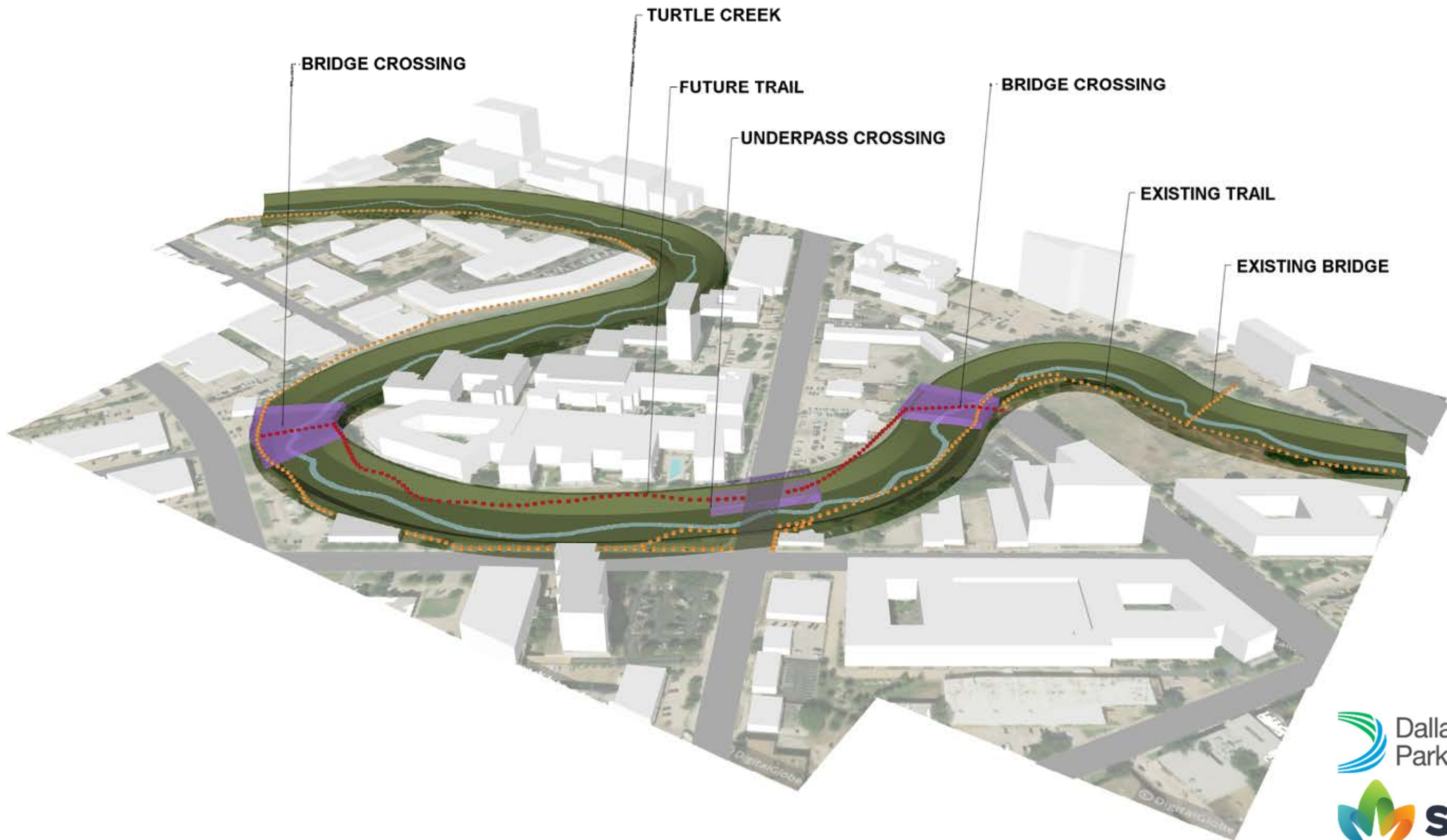
Neighborhood:
Design District

TIF District:
Design District

Program:
Trail
Public Open Space

Trinity Strand Hi Line





Process

- input
- vision
- direction

Budget

Budget:	\$7.00m
Fees/Soft Costs:	\$.90m
Trail Segments:	\$1.13m
Underpass:	\$.21m
<hr/>	
Bridge 1 and/or 2:	\$4.76m

Objectives

- point A to B
- change of direction
- structural type
- user groups
- public space
- artistic expression

Preferred Concept

- steel arch
- expanded plaza space
- utilize greenery/vines
- public art
- minimize maintenance



Dallas
Park & Recreation



TRINITY
STRAND
TRAIL



Pacheco Koch



plan view

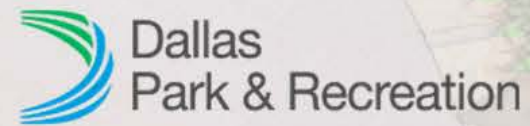


precedent imagery





plaza area view southwest





hi-line drive view northwest





entry plaza view southwest





connection view southwest



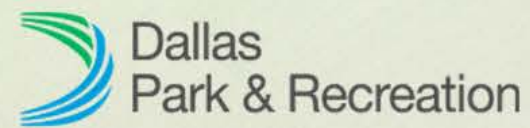


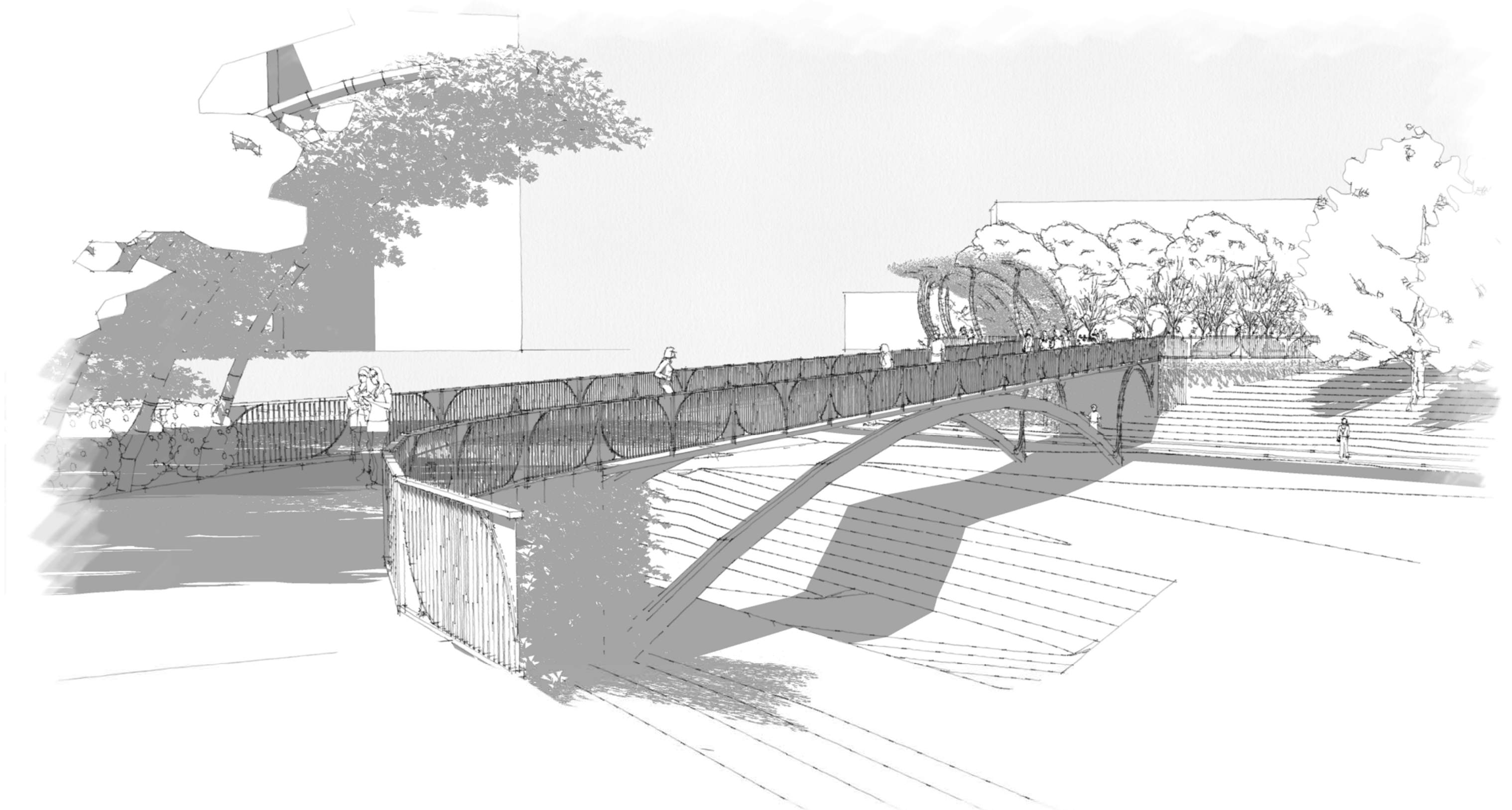
trail view south





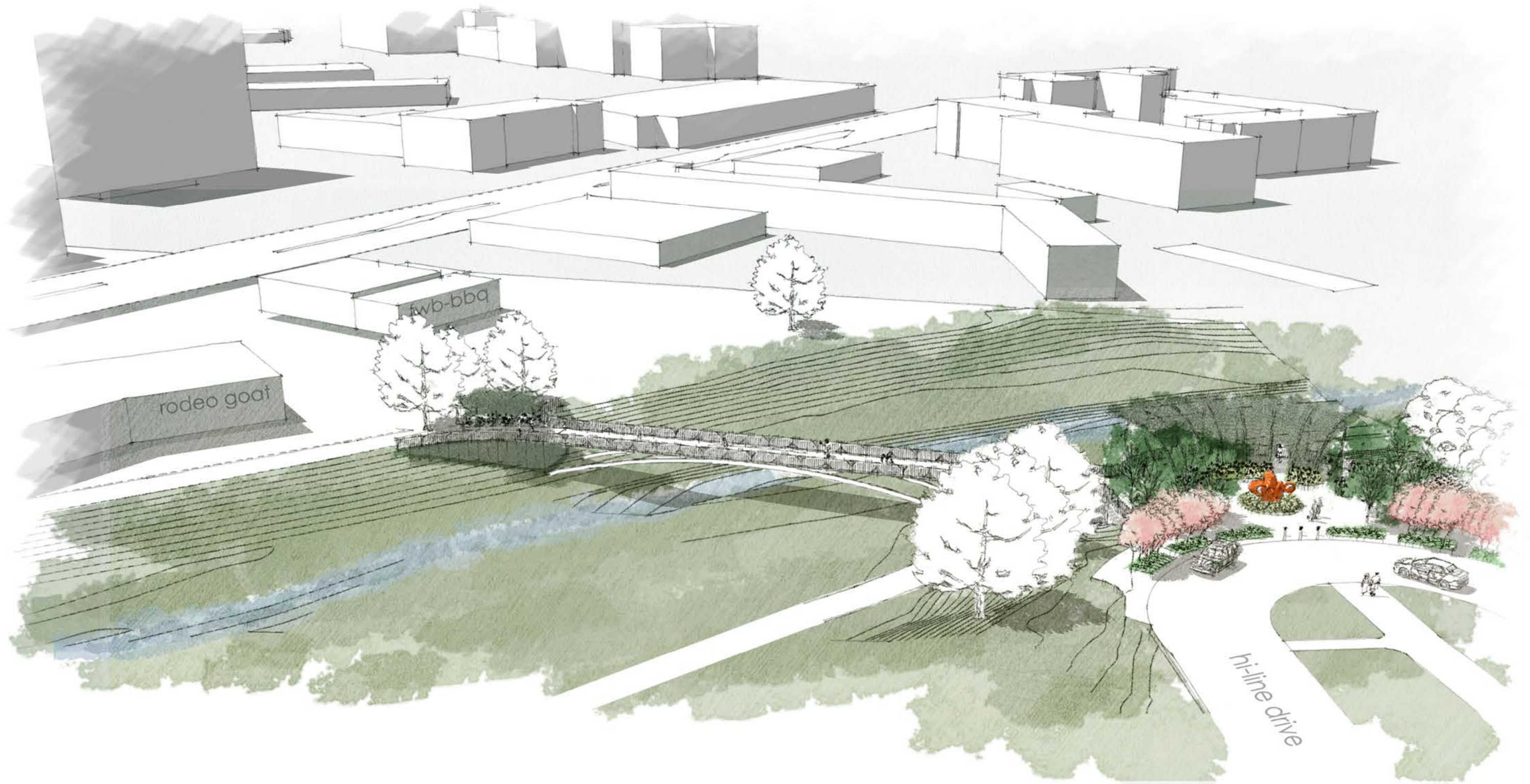
retaining wall





northeast from rodeo goat





northwest from virgin hotel

