

COA— _____

Applicant Name: Luke Morrow, WindowCraft, Inc.

Date Received: _____

Received by: _____

On behalf of Zach Rakusin, Homeowner

Window Survey Form

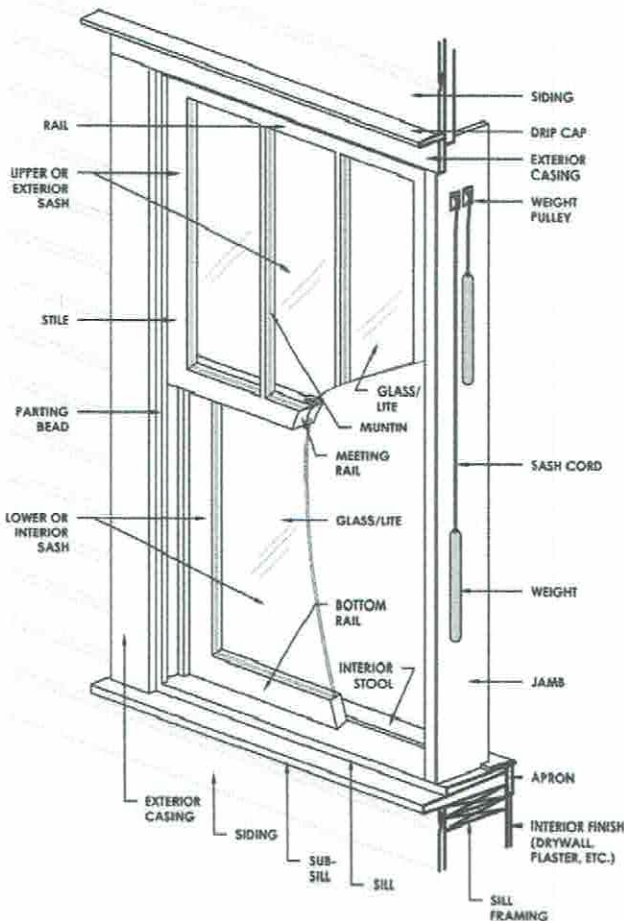
Have	Basic Requirements
<input checked="" type="checkbox"/>	1. Photographs or drawing of each elevation of the structure, with all the window openings on each elevation numbered.
<input checked="" type="checkbox"/>	2. Photographs of each window opening <i>numbered</i> corresponding to the photographs or drawings from #1.
<input checked="" type="checkbox"/>	3. Condition Evaluation of each window (see reverse).
<input checked="" type="checkbox"/>	4. Proposed window design (casement, fixed, etc.) , pattern (3/1, 6/6, 1/1, etc.) , materials (wood, vinyl, clad, etc.), etc. Specify if different for certain openings.
<input checked="" type="checkbox"/>	5. Proposed window product brochure/information that includes the company's depiction or photograph (not wind load information) of actual windows. We need to know what they look like on the exterior.
<input type="checkbox"/>	6. Other _____

ALL window openings on the structure should be assigned a **number** and **described** under the same number on the back of this sheet. Even those not being replaced should be assigned a number, however a photograph of those windows is not necessary, note on the second page that you aren't looking to replace that window number.

Windows in **pairs** or **groupings** should be assigned **separate** numbers. Windows in dormers and small fixed windows *should* also be included, but *not* door sidelights or transoms associated with a door.

On the second page, describe the issues and conditions of each window in detail, referring to the specific parts of the window (see diagram to the left). The photographs can be from the interior, exterior, or both. **Additional close-up photographs**, showing evidence of window condition, **MUST** be provided to better document problem areas.

The Planning and Development Department's evaluation and recommendation is based on deterioration/damage to the window unit, and associated trim. Broken glass and windows that are painted shut are not necessarily grounds for approving replacement.



Total Number of Window Openings on the Structure	25
Number of Historic Windows on the Structure	38
Number of Existing Replacement/Non-Historic Windows	5
Number of Windows Completely Missing	0
Total Number of Windows to be Replaced	28

COA— _____

Applicant Name: Luke Morrow, WindowCraft, Inc.

On behalf of Zach Rakusin, Homeowner

Date Received: _____

Received by: _____

Window Survey Form—Window Condition Report

Window #	Window Condition
1	Damaged sill, window to be replaced to match 2 & 3, sash kit and sill replacement.
2	Extensive rot, sash kit and sill replacement
3	window not square/ not closing, new sill and sash kit
4	Entire window rotten beyond repair. Replacing complete window, clear glass 2w2h lite pattern.
5	Rotten, complete window replacement
6	Rotten, complete window replacement
7	Rotten, complete window replacement
8	Rotten, complete window replacement
9	Rotten, sash kits and new sill
10	Rotten, sash kits and new sill
11	Window already replaced by others
12	Window ok, no change
13	Window out of square, will not lock or seal. Sash kit replacement.
14	Window facing front elevation, to replace to match others.
15	No change, minimal rot observed. Repair to be by others
16	No change, window in good condition
17	No change, previously replaced by others.
18	No change, previously replaced by others.
19	No change, previously replaced by others.
20	No change, previously replaced by others.

Window #	Window Condition
21	Sill replacement, replace sashes to match other windows, repair sill
22	Sill replacement, replace sashes to match other windows, repair sill
23	Sill replacement, replace sashes to match other windows, repair sill
24	Window ok, no change
25	Rotten, sash kits and new sill
26	Rotten, sash kits and new sill
27	Window ok, no change
28	Window ok, replace sill only
29	Window ok, no change
30	Window ok, no change
31	Window ok, no change
32	window will not close, out of square, sash kit and sill repair.
33	window in front, visible to street, sash kit and sill repair to match others
34	window in front, visible to street, sash kit and sill repair to match others
35	window in front, visible to street, sash kit and sill repair to match others
36	window out of square, will not close, sash kit and sill repair
37	window in front, visible to street, sash kit and sill repair to match others
38	No change, window in ok condition
39	sill replace and sash kit, damage from varmints
40	sill replace and sash kit, damage from varmints

COA— _____

Applicant Name: Luke Morrow, WindowCraft, Inc.

On behalf of Zach Rakusin, Homeowner

Date Received: _____

Received by: _____

Window Survey Form—Window Condition Report

Window #	Window Condition
1	41 - Window beyond repair, complete replacement
2	42 - Window beyond repair, complete replacement
3	43 - Window beyond repair, complete replacement
4	
5	
6	
7	
8	
9	
10	
11	
12	
13	
14	
15	
16	
17	
18	
19	
20	

Window #	Window Condition
21	
22	
23	
24	
25	
26	
27	
28	
29	
30	
31	
32	
33	
34	
35	
36	
37	
38	
39	
40	



43 42 41

38

40 39

19 18 17

20

37 36 35

16

91



1

2

3

1

2

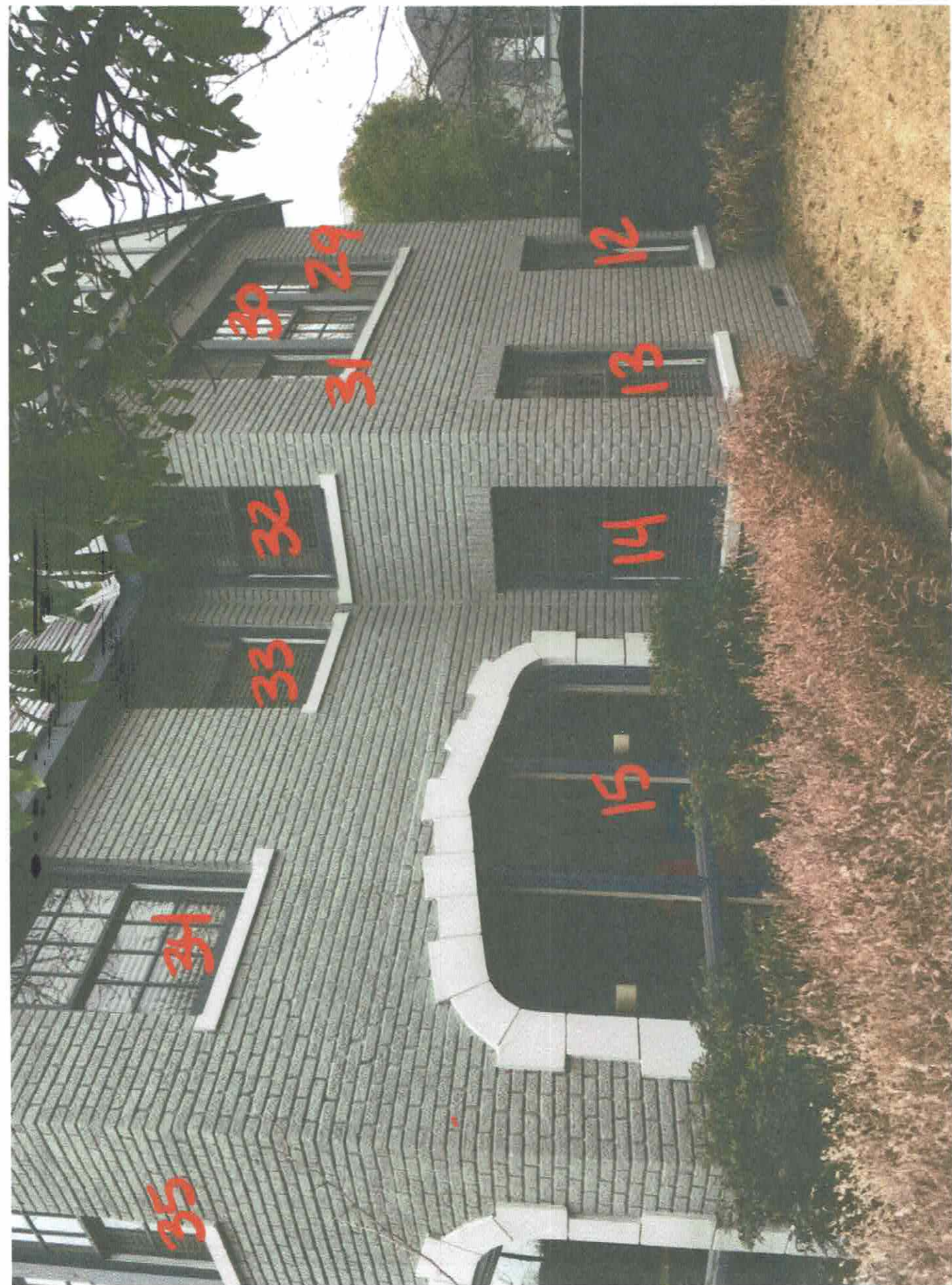
3

24

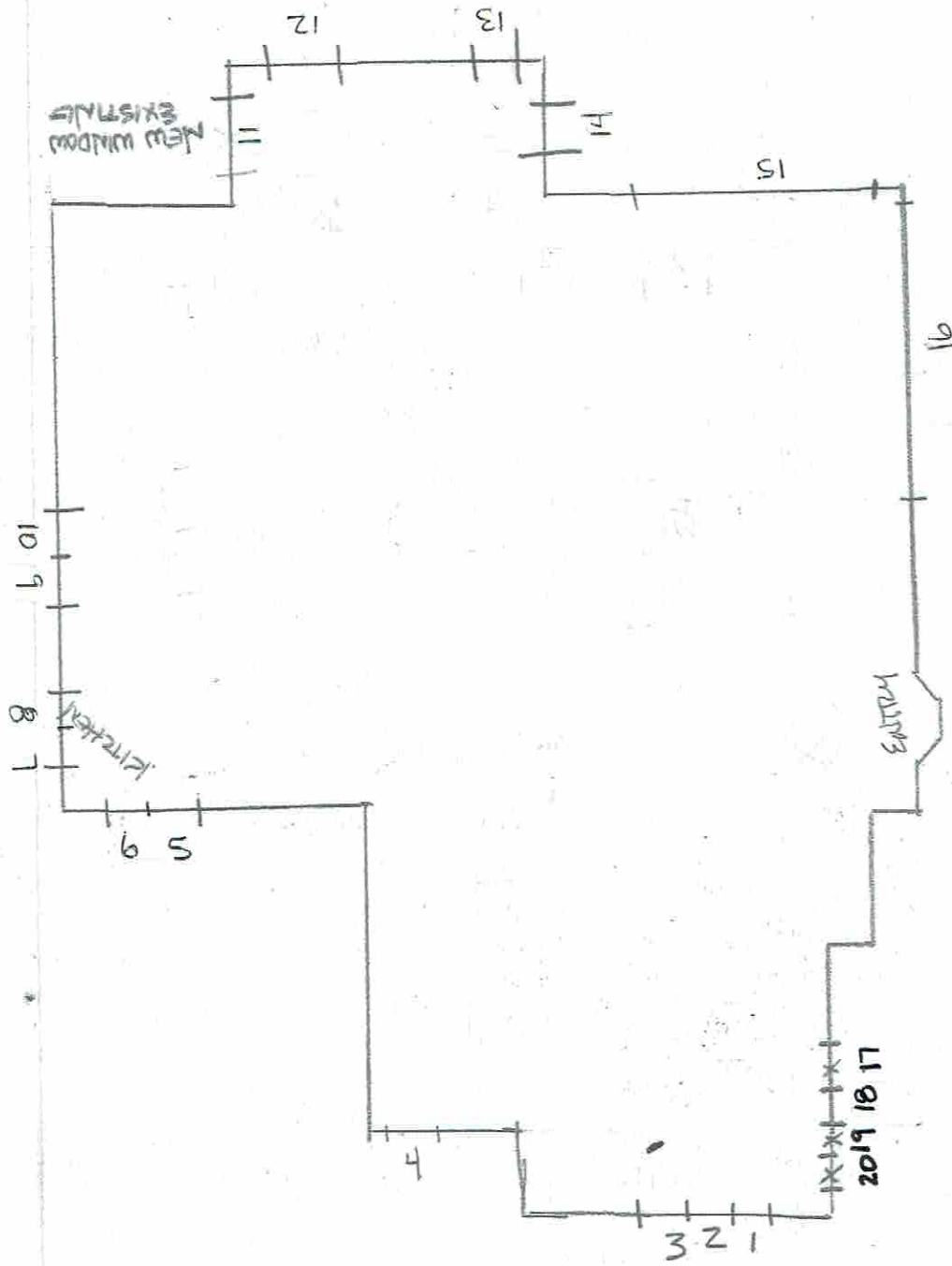
4







6205 LA VISTA -

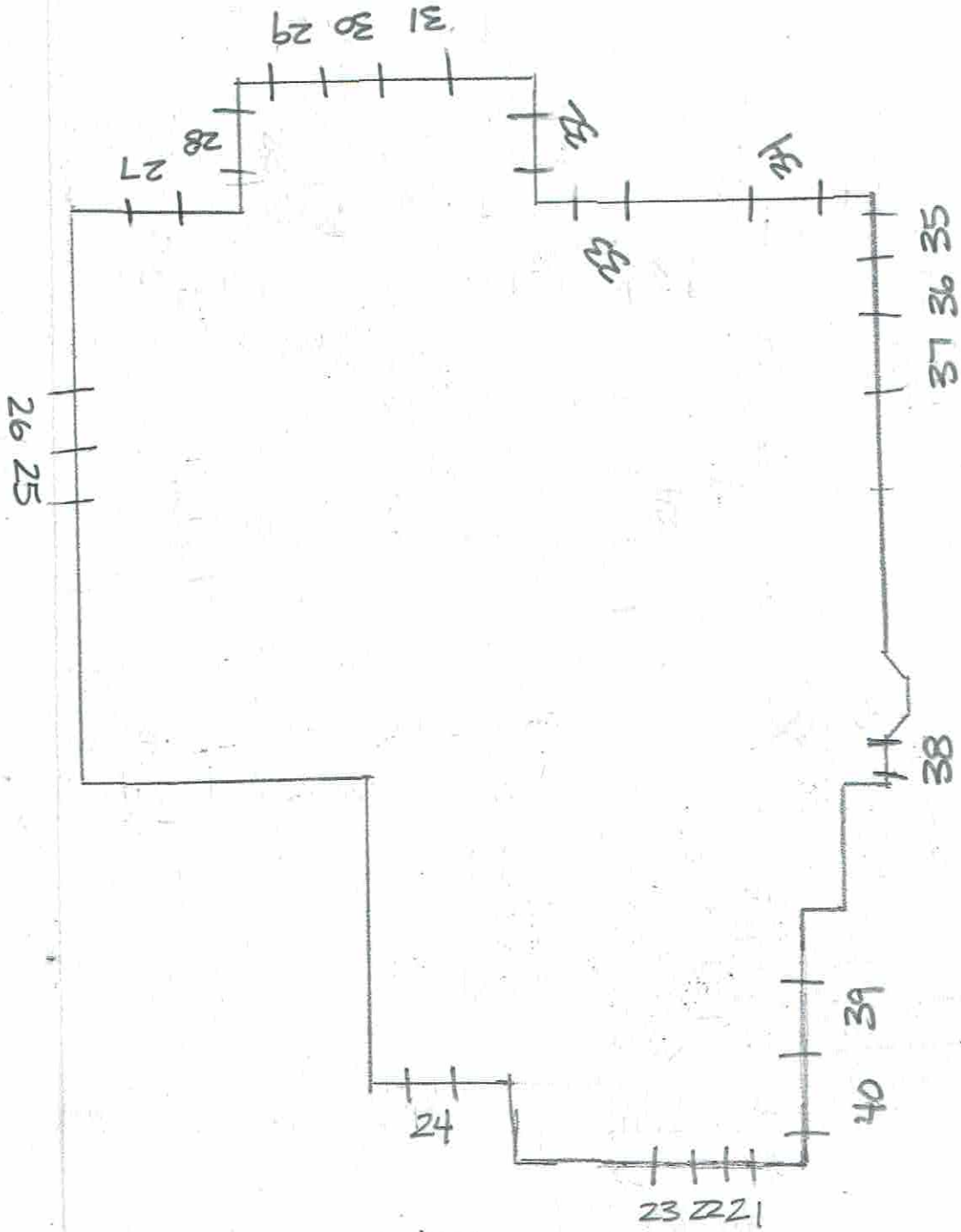


FIRST FLOOR

LA VISTA

BRYAN

6205 LA VISTA -

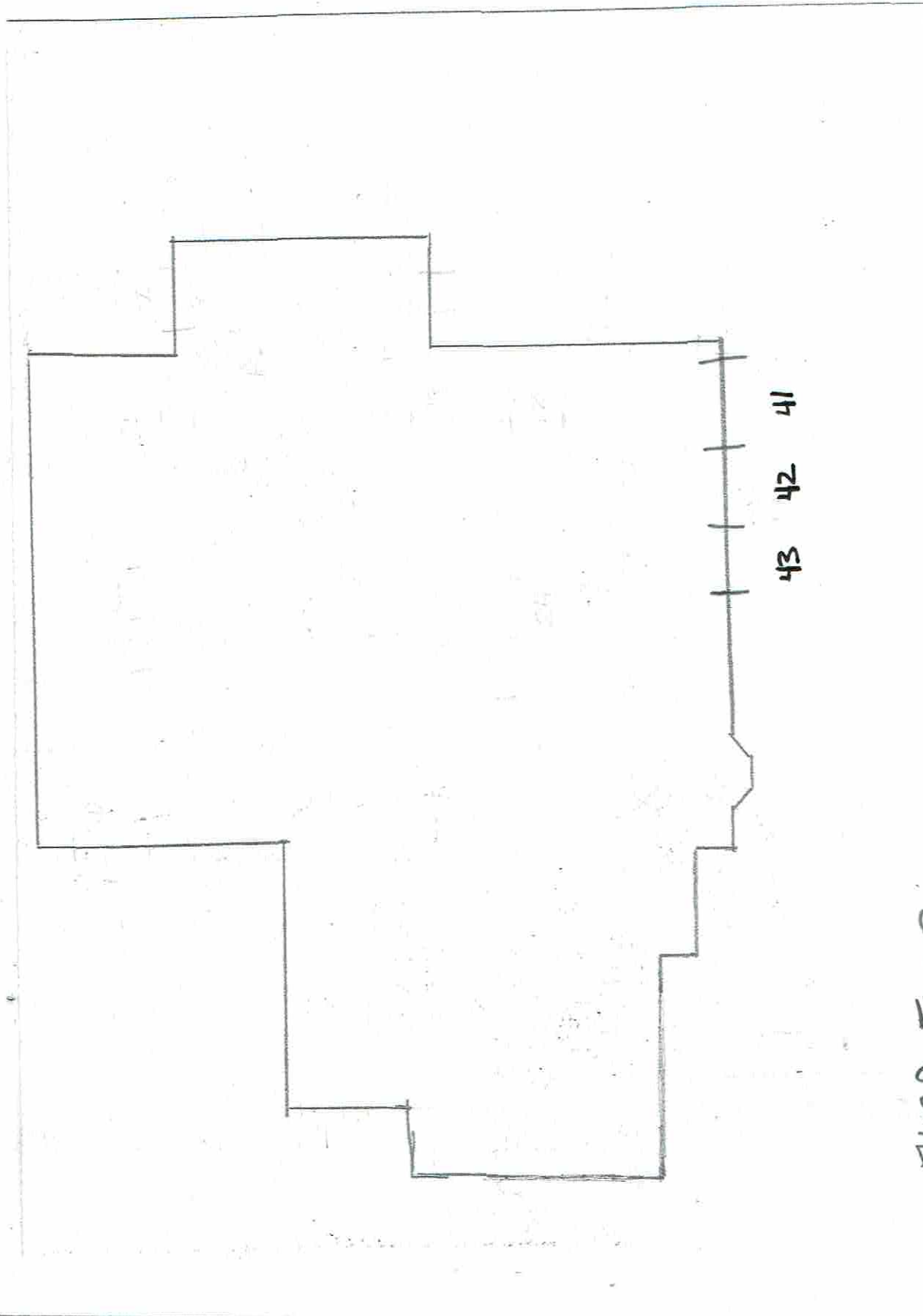


SECOND FLOOR

LA VISTA

BRYAN

6205 LA VISTA -



THIRD FLOOR

BRYAN

LA VISTA

QTY 3 SASH REPLACE KITS
MATCH EXIST. LITES.
New sill

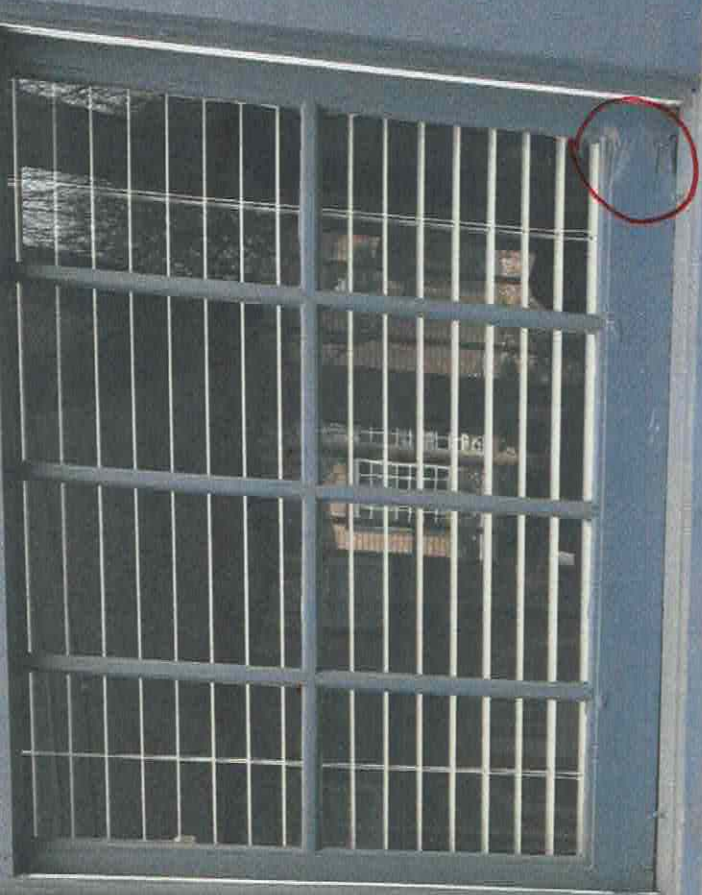
3
2
1

K REPLACE
TO MATCH





↑ WINDOW # 3
SASHES OUT OF SQUARE



↑ WINDOW # 2
SUBSTANTIAL
ROT



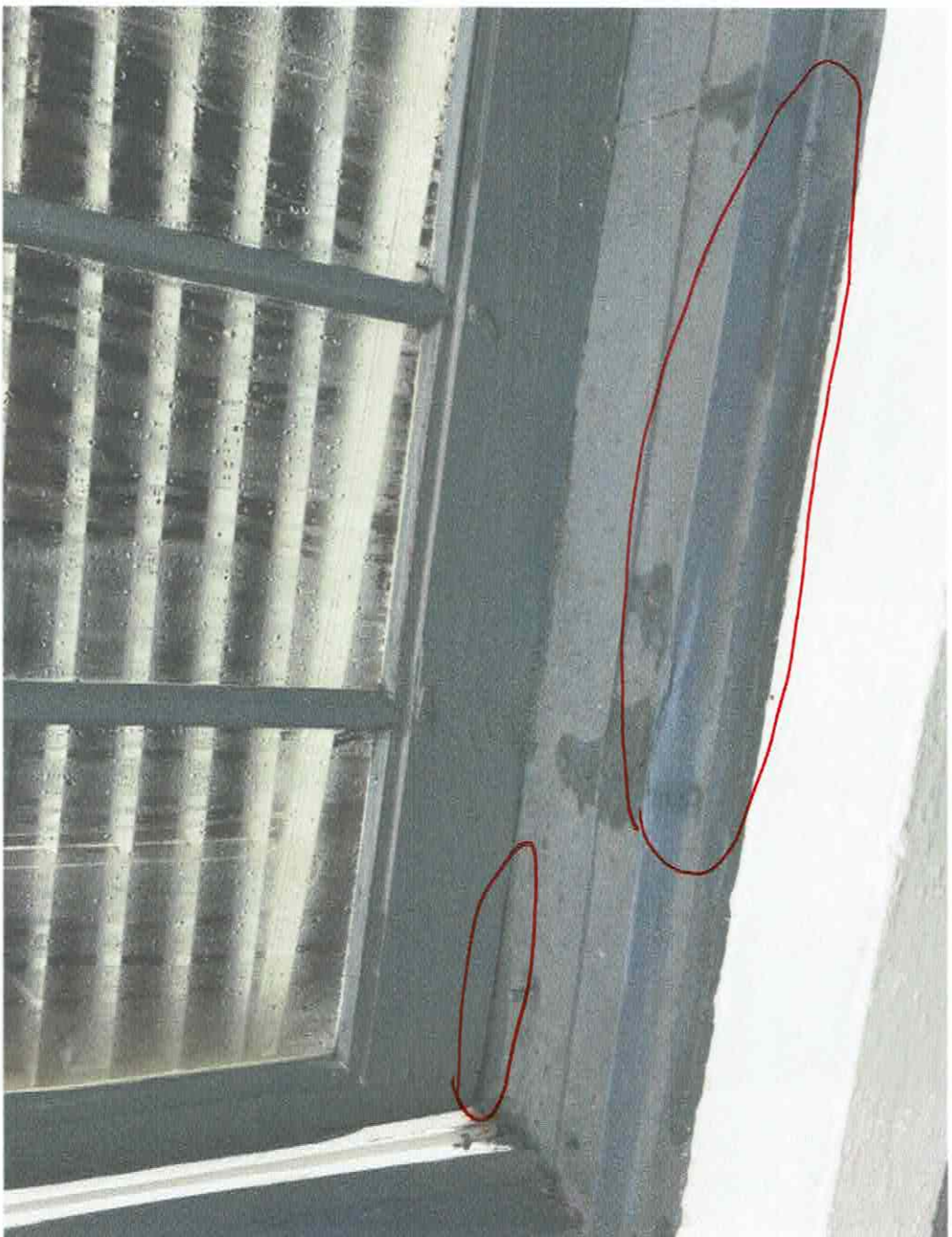
#1 202



2 200



SEWER, MINES
WINDOW, NON
PORTAL SIDE
3



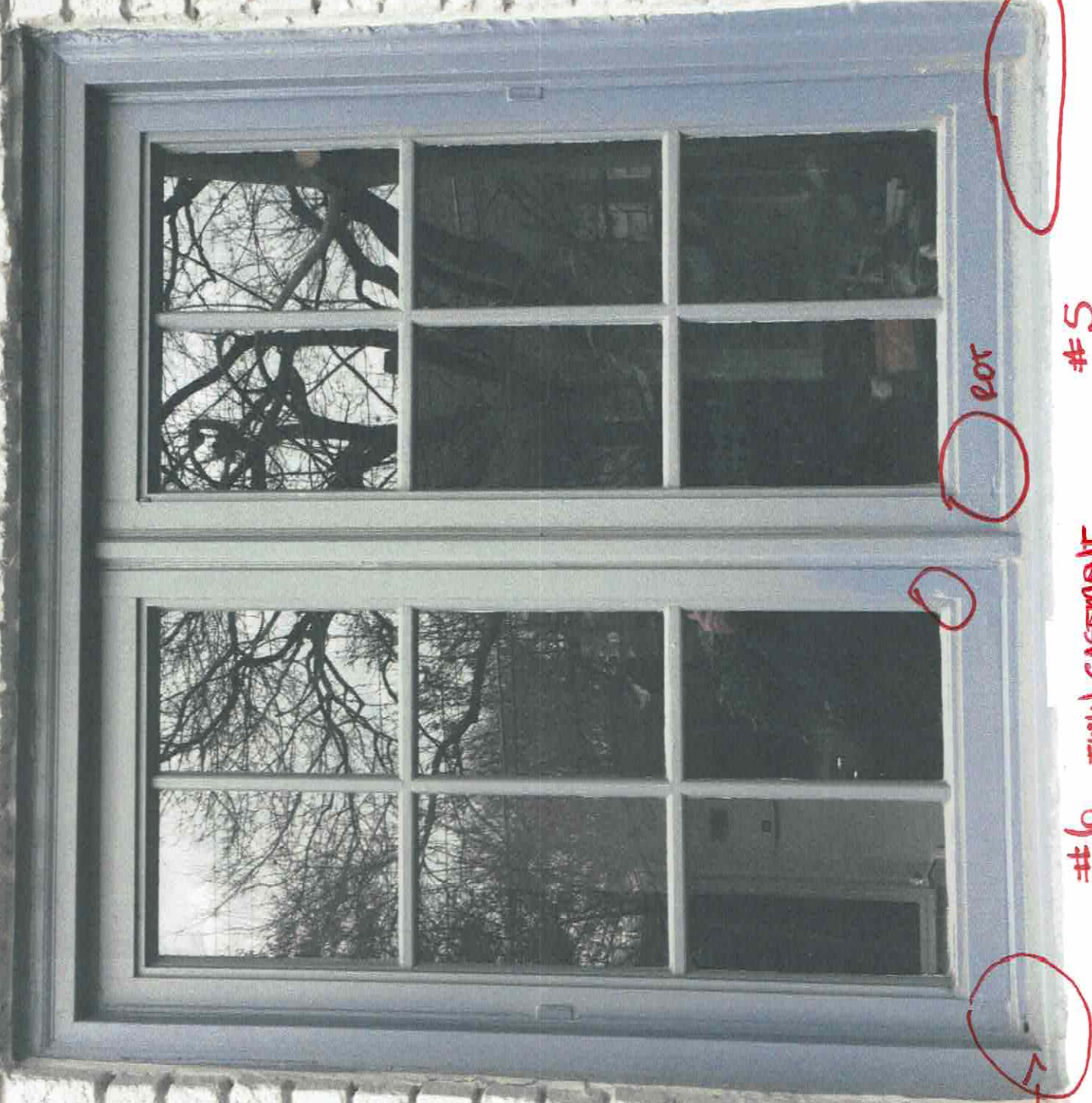
NEW WINDOW
TO HAVE ZWZM
LITE PATTERN.



WINDOW # 4 - ROTTEN BEYOND REPAIR
TO BE NEW WINDOW WITH CLEAR GLASS

Porten y
PepAIR
Estyone





rot

#5

TWIN CASEMENT
REPLACE COMPLETELY

#6

rot



#7

- ROT EXTENSIVE

TWIN CASEMENT - REPLACE COMPLETE UNIT

#8





Window 7 - ADDITIONAL PICTURE OF ROT



6 # medium window # 9

(2) sash kits + new sill

01 # medium window # 10

REPLACED BY OTHERS
WE ARE MATCHING
THIS WINDOW'S SPECS
FOR REPLACEMENT



Window #11 OK, REPLACED BY OTHERS

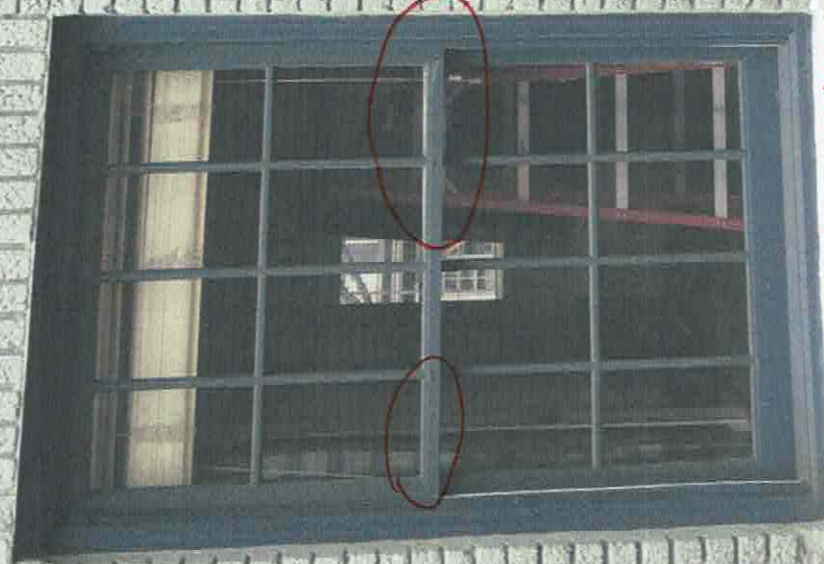


WINDOW #12 NO WORK

WINDOW OUT OF SQUARE
(SEE WHITE LINES)

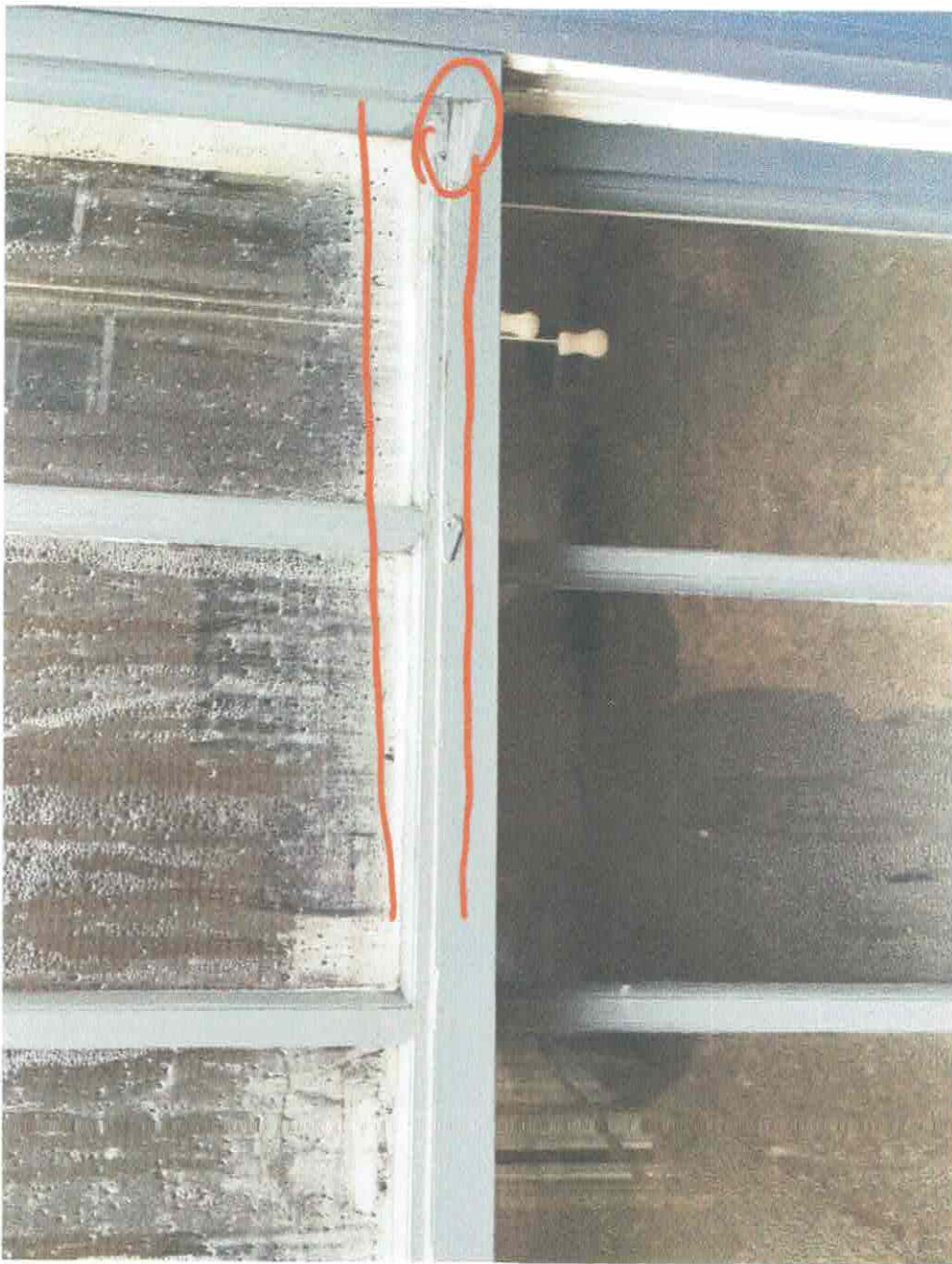
WINDOW #13 SASH KIT + SILL


 HAVE
SOLD
 FIVE
 MIL
 214.522.3836
NANCY JOHNSON
 214.674.3840
 **NANCY JOHNSON** GROUP



14

OUT OF SECTIONS
DAMAGED



TO REPLACE 14 TO MATCH
OTHERS FACING FRONT
ELEVATION

VE
SOLD
MIL
NANCY JOHNSON
214.674.3840
NANCY JOHNSON
REALTOR

14

← 15

REPLACES BY OTHERS



20191817



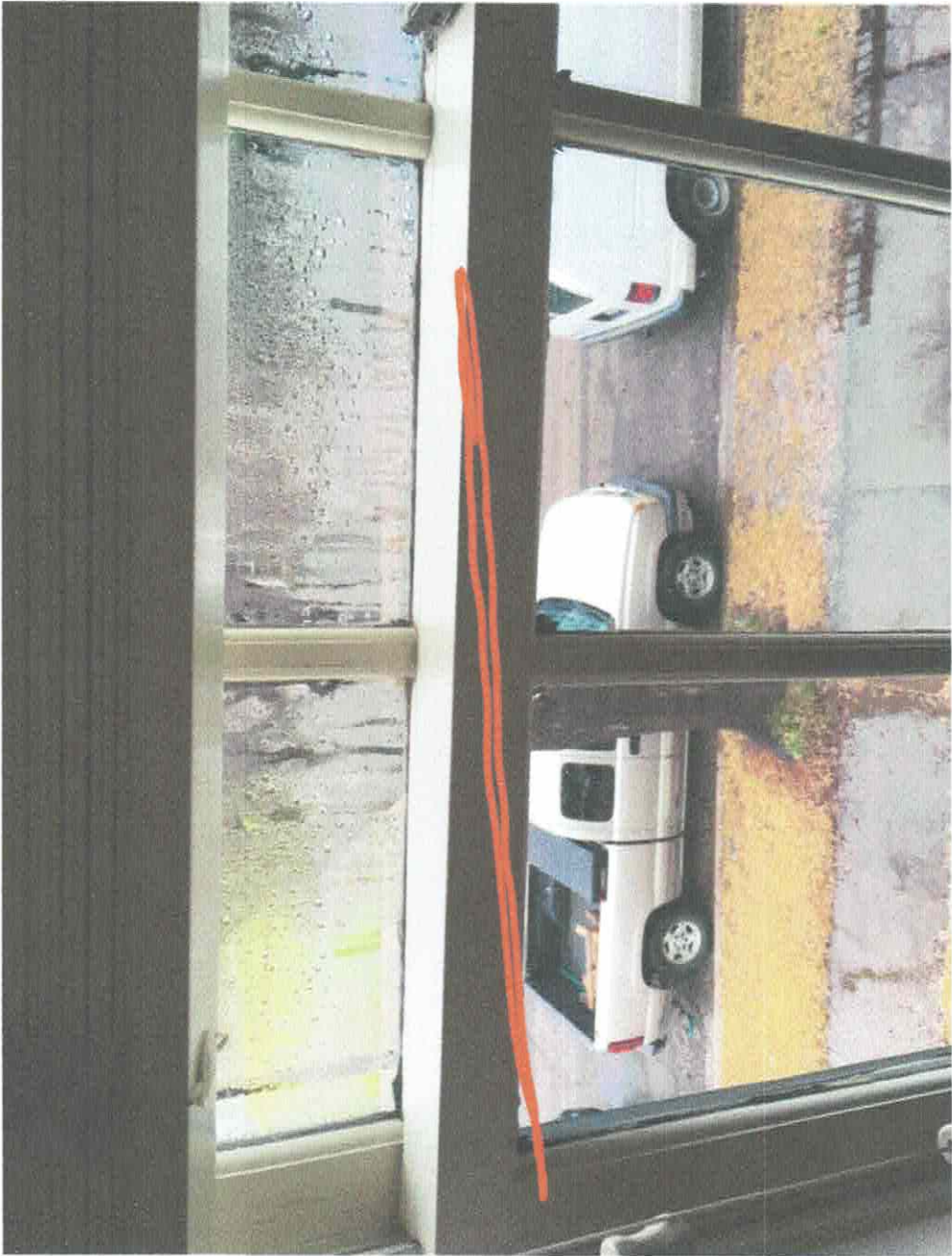
21

22

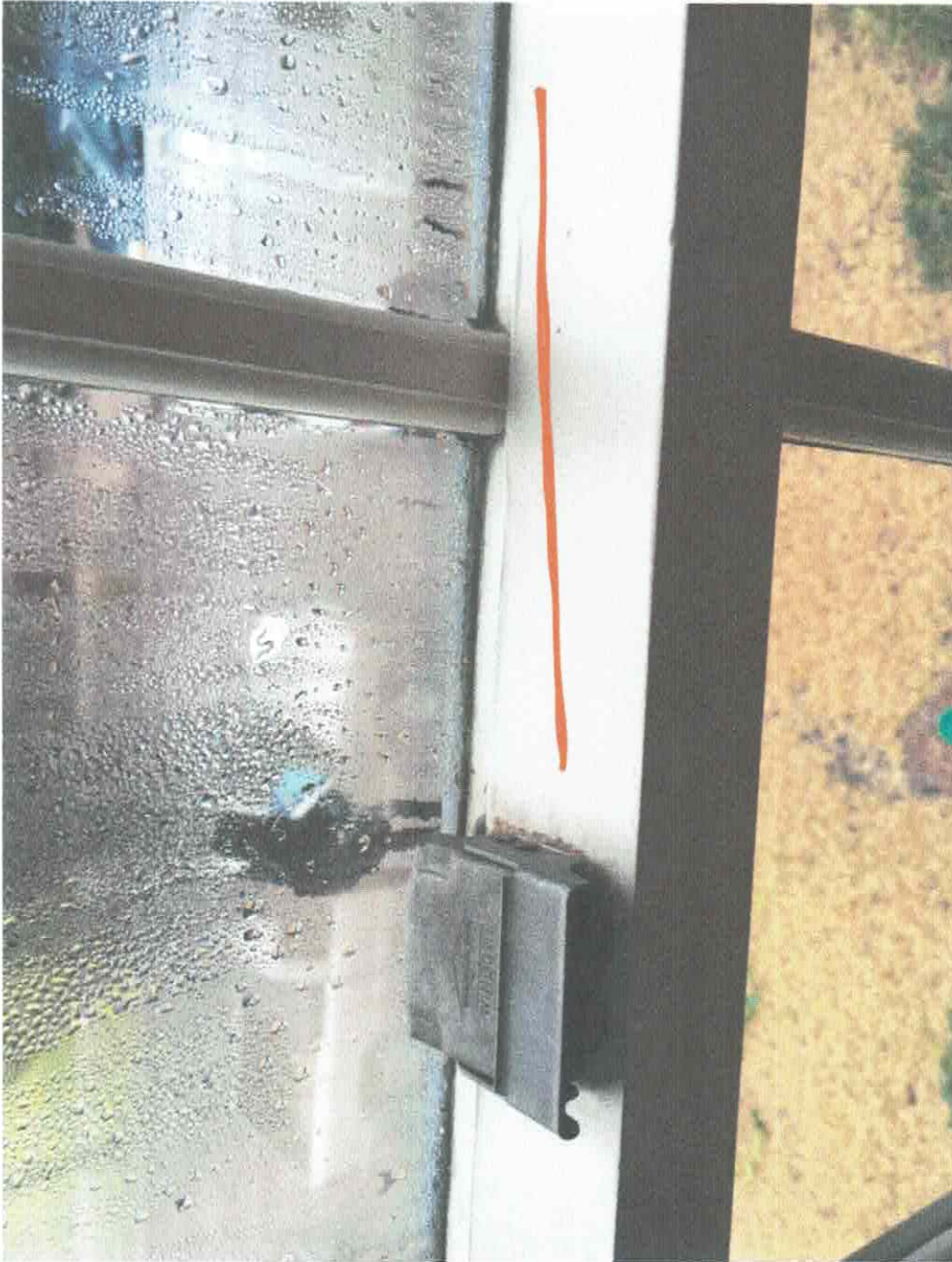
23

24- No work

SEAL
with New Lock
OUT OF SQUARES
22



will not look
out on source
with
SCM
look!



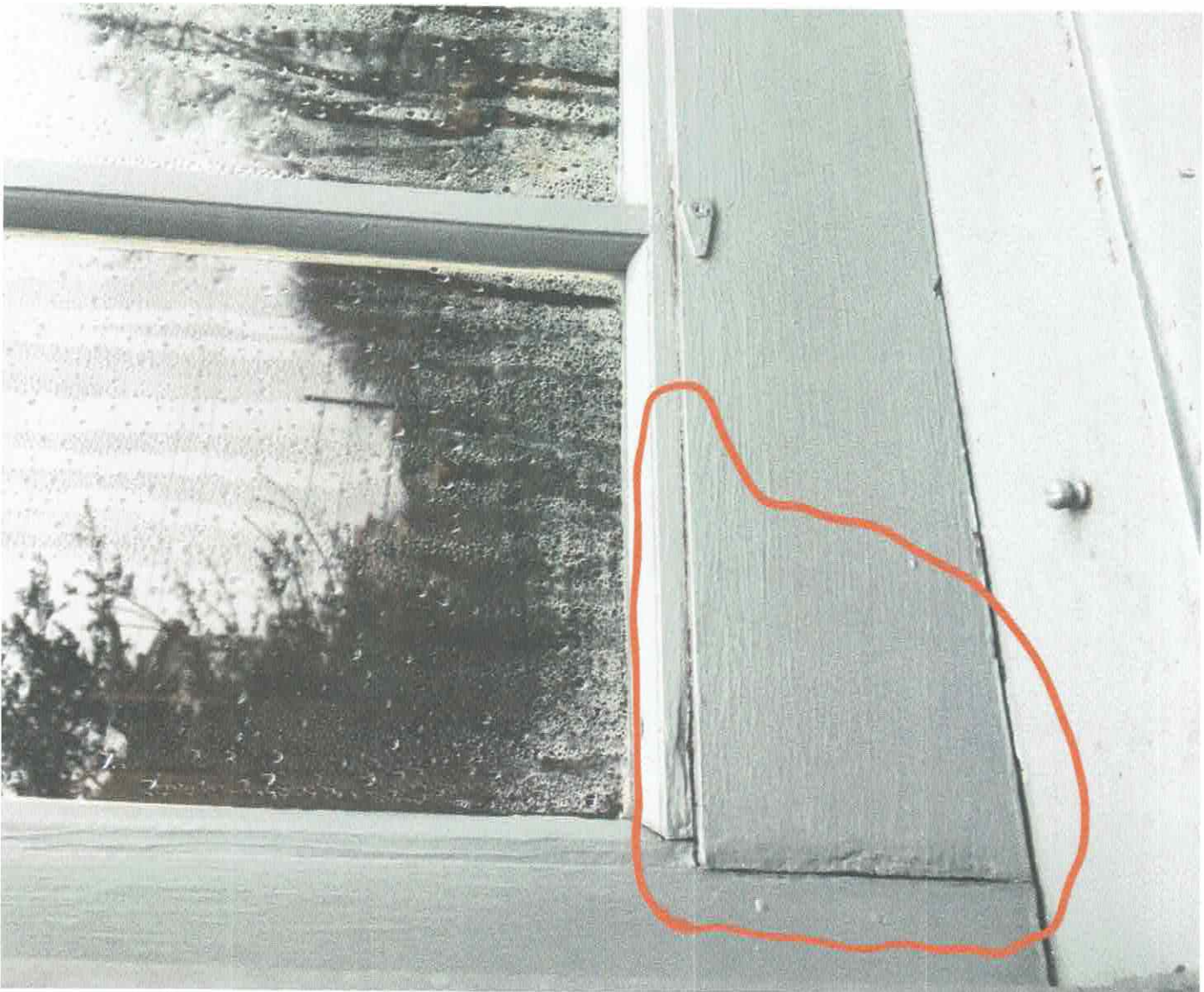
25

26

SUBSTANTIAL ROT
BOTH SASHES + SILL
2 SASH KITS + NEW SILL

25

26

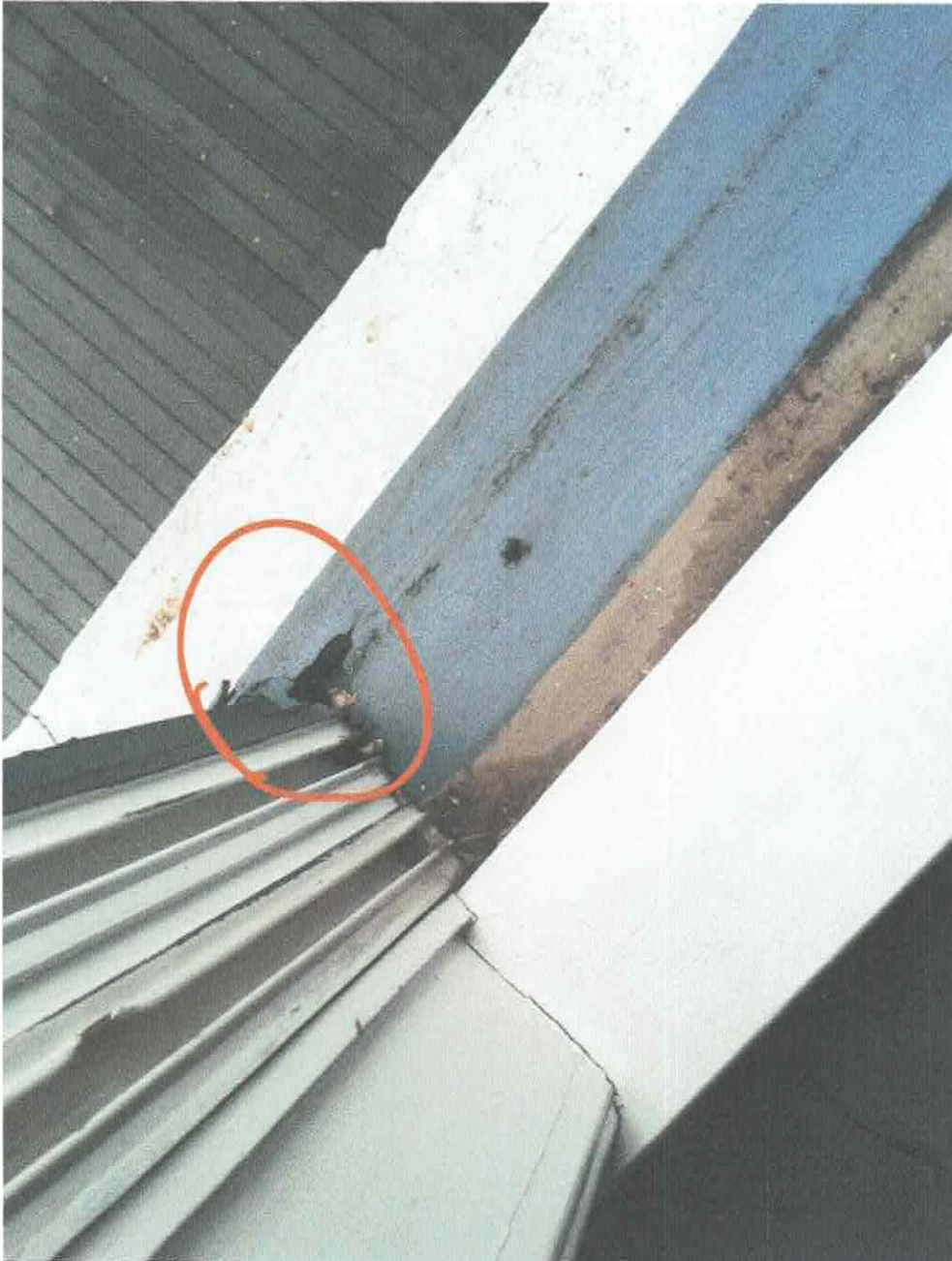




#26



26
SIN 2008



27 - OK

28 - New Sill ONLY

REAR ELEVATION

32 + 33 OUT OF SQUARES

SASH RITS + NEW SMLS

29, 30, 31 - NO WORK

33

32

31

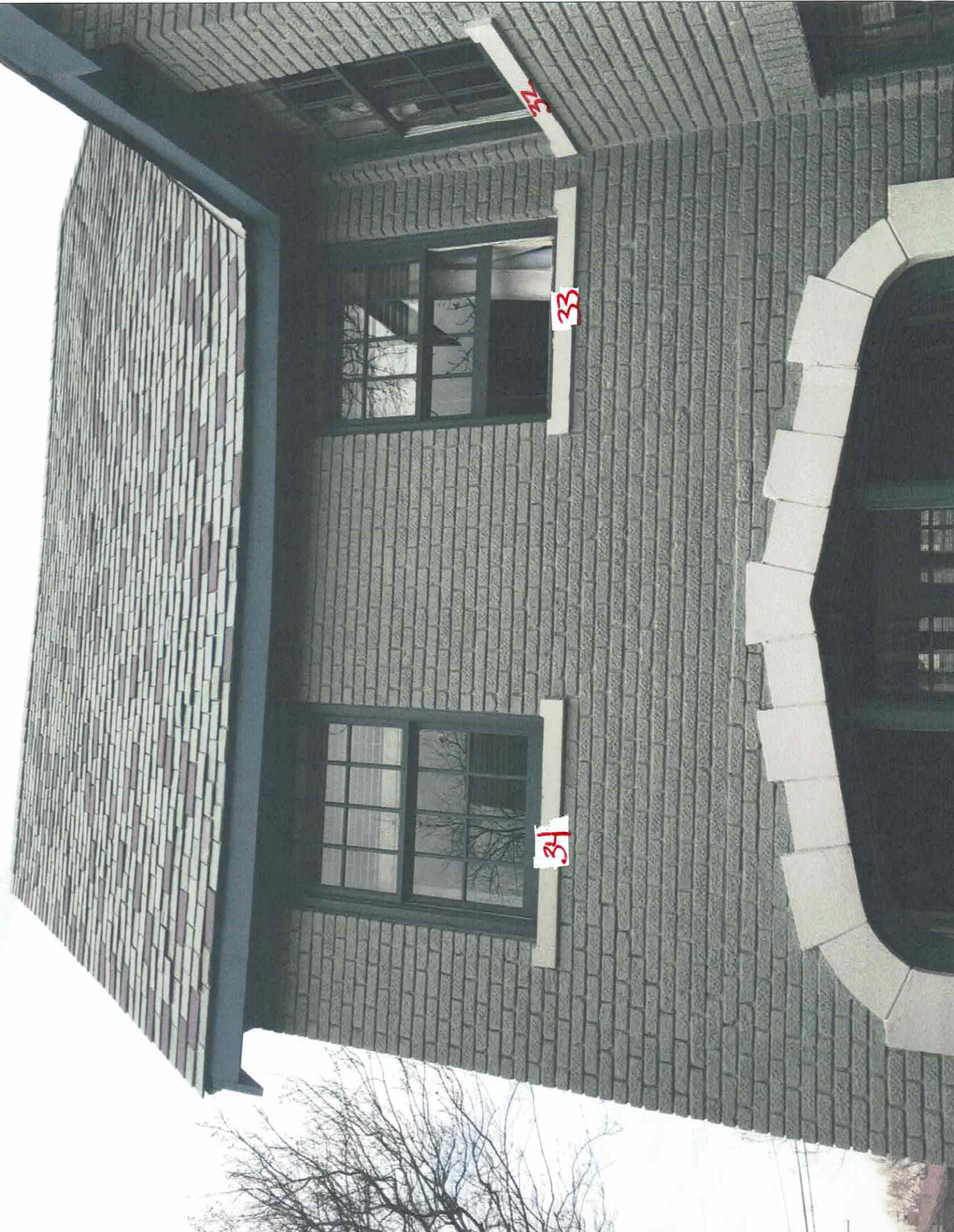
30

29

WINDOW 32

OUT OF SQUIDES / SILL FRONT ELEVATION

SASH KIT + NEW SILL



32

33

34

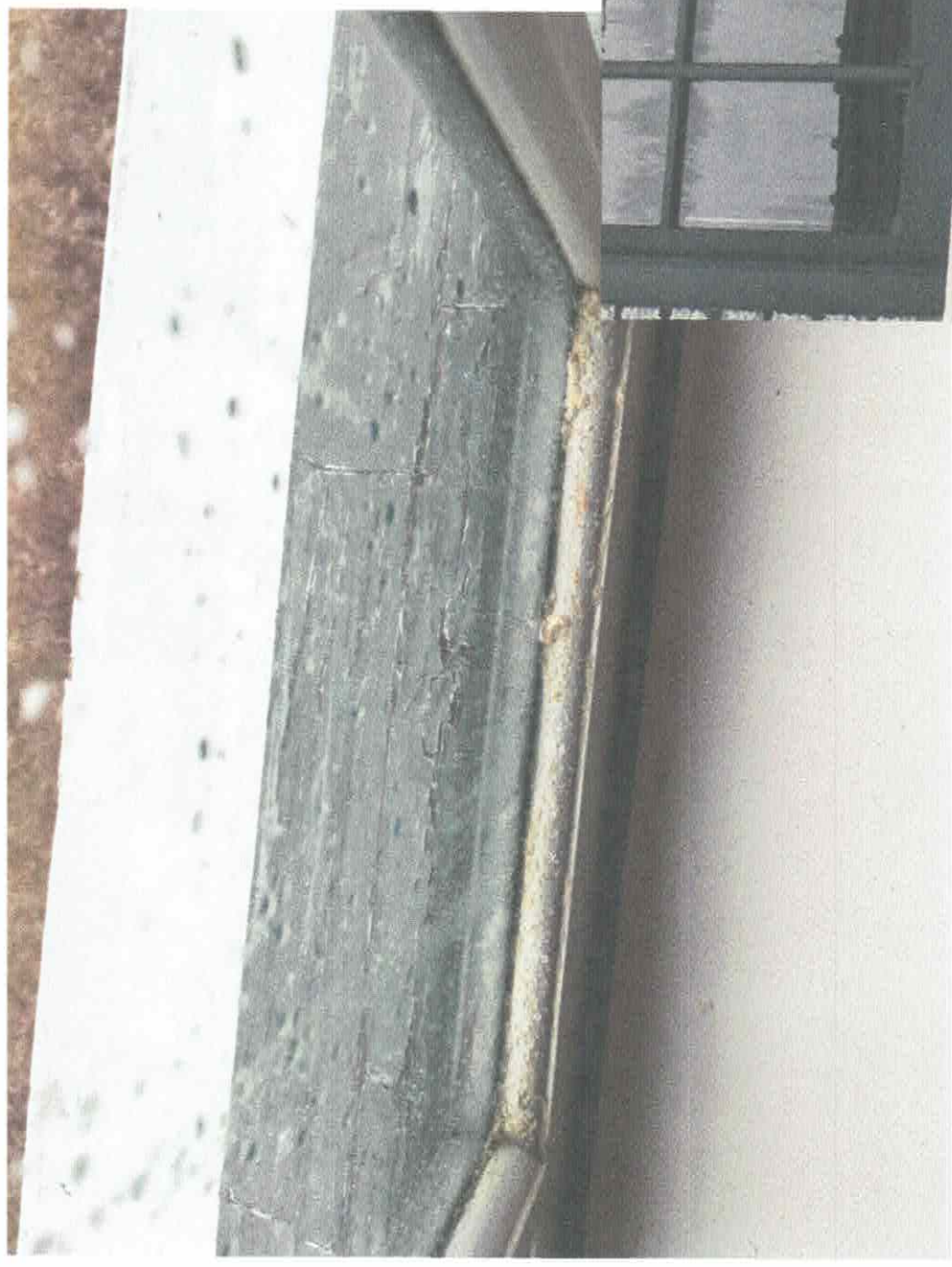
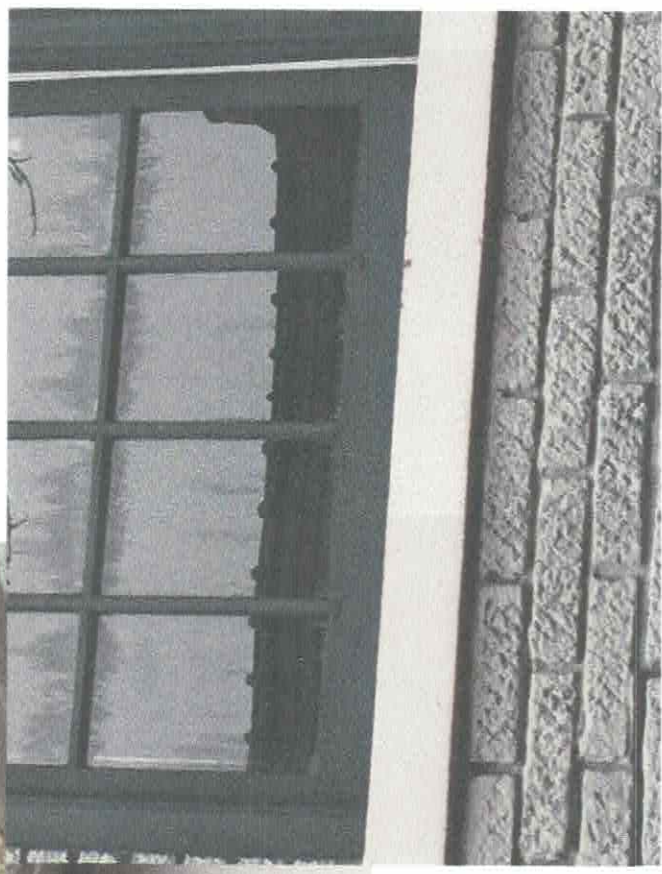
Call Now for
OUR OFFER
32 Months
FREE



Will not be
out of spaces
GS



Handwritten text in red ink, oriented vertically and rotated 90 degrees clockwise. The text reads: "Handwritten text in red ink, oriented vertically and rotated 90 degrees clockwise." The text is written in a cursive style and appears to be a note or label.





35

36

37

25
Dorothy S. Miller



Our of Secular
will not lock
Soulmate





13



OUT OF SQUARE
WILL NOT SEAL/LOCK



39

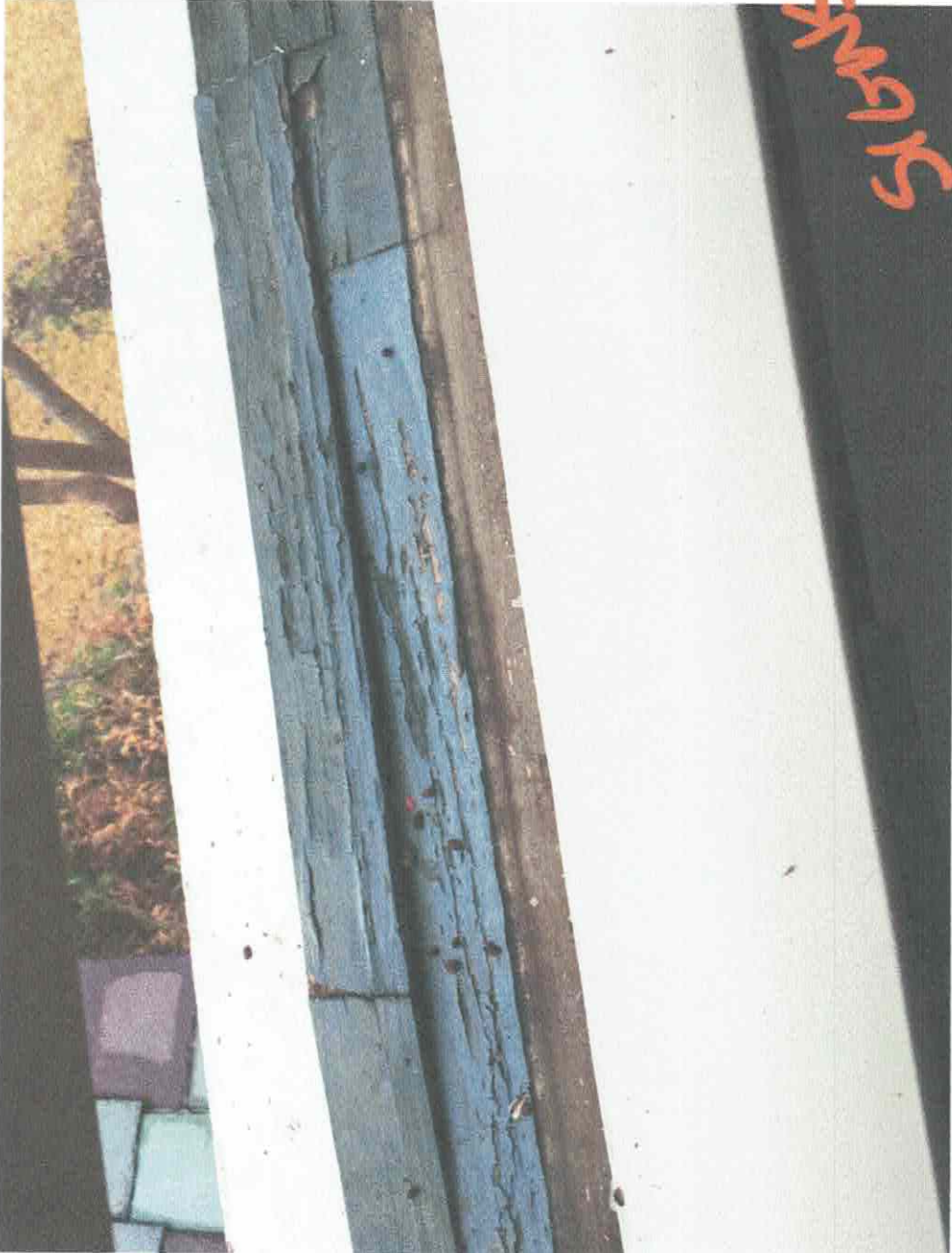
40

will not lock
out of square

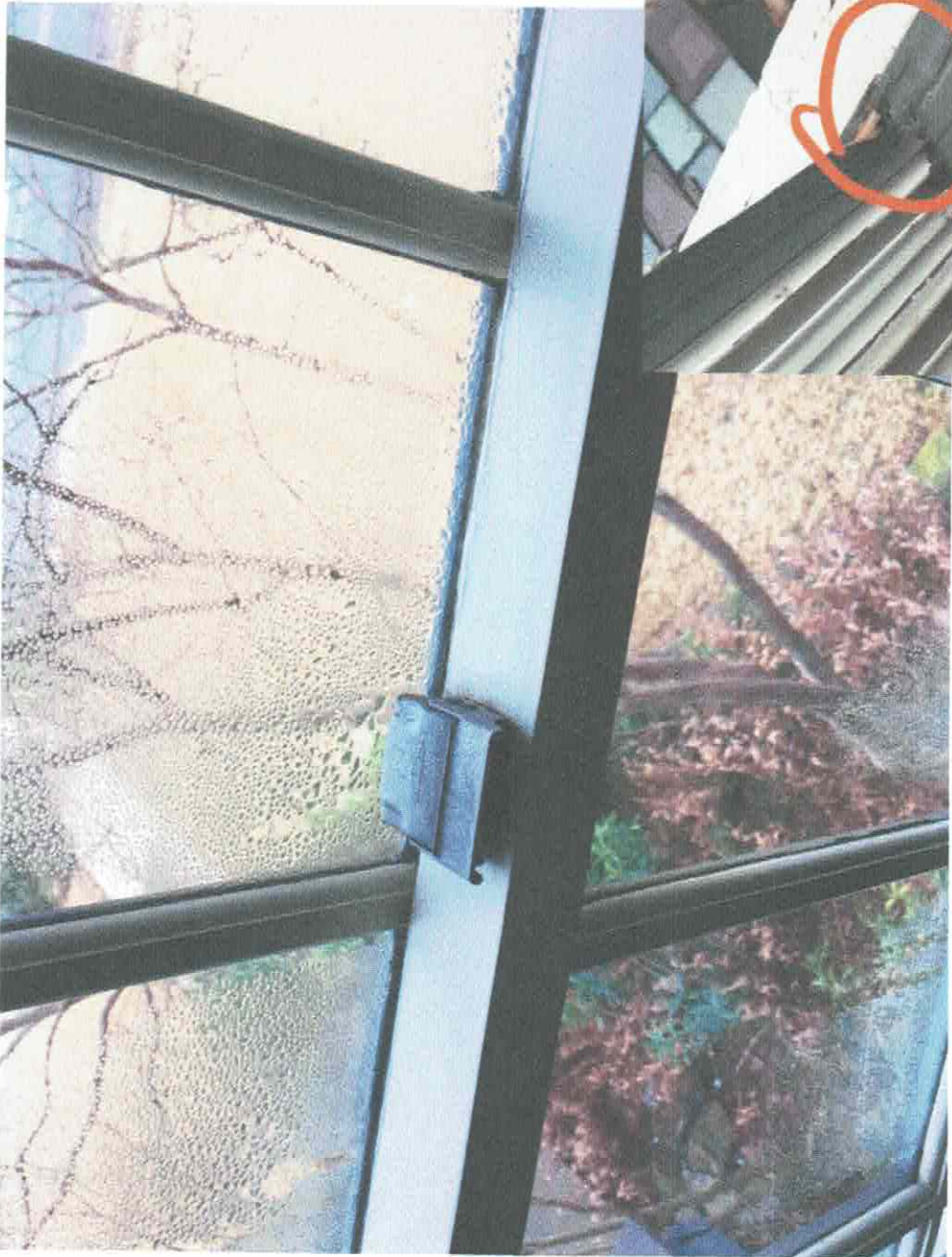
pg 29



DAVID R. ECHOLS
3030 W. WASHINGTON
PORTLAND, OR 97201
503 255 1234



off



ROTTEN SILL
OUT OF SQUARE WILL
NOT LOCK

41

COMPLETE WINDOW REPLACEMENT
MATCH EXISTING LITES

42

43

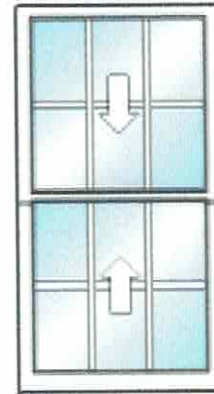
Proposed Replacement Window Elevation Views & Specifications

BILL TO:
SHIP TO:
Phone
Email
Contact Info
Phone
Fax
Contact Info

QUOTE #	QUOTE DATE	CUSTOMER PO#	ORDER PLACED BY	DATE REQUESTED
943896	Quote Not Ordered		cyoun	1/1/0001
JOB NAME	BID BY	QUOTE NAME	ORDER DATE	SHIP DATE
		Sash Replacement	Quote Not Ordered	1/1/0001

LINE #	LINE TYPE	DESCRIPTION	QTY	U/M
100-1	WindowAndDoor	PK- 298	2	

All-Wood Universal Sash Replacement Kit Double Hung Operating 32.25 x 62.25
 Custom: Sash Opening Width = 32.25, Sash Opening Height = 62.25, Sash Split = 50/50
 Complete Sash Kit, Drawing Numbers = , Sill Angle = 14, Product Offering Special Modification = No
 Pine Exterior, Frame Color = Primed Exterior, Natural, Pine Interior
 Sash-Panel Color = Primed Exterior
 Dual Insulated, Low-E 366, Standard Bead, Argon Gas = Yes, Spacer Channel = Black Warm Edge Spacer
 Standard Hardware Type, 03 Bronze, Jamb Liner Type = Concealed, Lock-Keepers = 1-Lock, Window Opening Control Device = No
 Screen Option = Full Screen Shipped Separately, Exterior Side Screen Stop = Yes, Exterior Head Screen Stop = Yes, White 001, AAMA 2604, Fiberglass Mesh
 Simulated Divided Lite, Equal, 7/8", Exterior Grille Color = Primed Exterior, Natural, Pine Interior, w/spacer, Dark Bronze Anodized, 3W2H Entire Set
 U-Factor = 0.29, SHGC = 0.18, CR = 60, VT = 0.4, AI = 0.01, CPD = SIE-N-112-00271-00002, GapFill1 = ARG, W m 2k = -1
 Non-Manufacturer Related =
 Unit 1: Glass Width = 27.75, Glass Height = 28.09375,
Rough Opening: N/AA
Overall Unit Size: N/AA

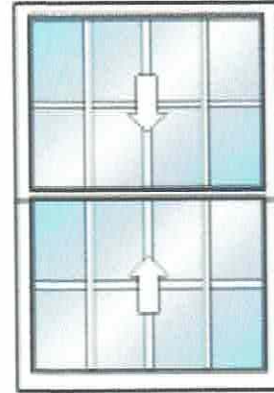


SURVEY FORM WINDOWS 1 + 3

QUOTE #	QUOTE DATE	CUSTOMER PO#	ORDER PLACED BY	DATE REQUESTED
943896	Quote Not Ordered		cyoun	1/1/0001
JOB NAME	BID BY	QUOTE NAME	ORDER DATE	SHIP DATE
		Sash Replacement	Quote Not Ordered	1/1/0001

LINE #	LINE TYPE	DESCRIPTION	QTY	U/M
200-1	WindowAndDoor	PK-298	1	

All-Wood Universal Sash Replacement Kit Double Hung Operating 41.75 x 62.25
 Custom: Sash Opening Width = 41.75, Sash Opening Height = 62.25, Sash Split = 50/50
 Complete Sash Kit, Drawing Numbers = , Sill Angle = 14, Product Offering Special Modification = No
 Pine Exterior, Frame Color = Primed Exterior, Natural, Pine Interior
 Sash-Panel Color = Primed Exterior
 Dual Insulated, Low-E 366, Standard Bead, Argon Gas = Yes, Spacer Channel = Black Warm Edge Spacer
 Standard Hardware Type, 03 Bronze, Jamb Liner Type = Concealed, Lock-Keepers = 2-Locks, Window Opening Control Device = No
 Screen Option = Full Screen Shipped Separately, Exterior Side Screen Stop = Yes, Exterior Head Screen Stop = Yes, White 001, AAMA 2604, Fiberglass Mesh
 Simulated Divided Lite, Equal, 7/8", Exterior Grille Color = Primed Exterior, Natural, Pine Interior, w/spacer, Dark Bronze Anodized, 4W2H Entire Set
 U-Factor = 0.29, SHGC = 0.18, CR = 60, VT = 0.4, AI = 0.01, CPD = SIE-N-112-00271-00002, GapFill1 = ARG, W m 2k = -1
 Non-Manufacturer Related =
 Unit 1: Glass Width = 37.25, Glass Height = 28.09375,

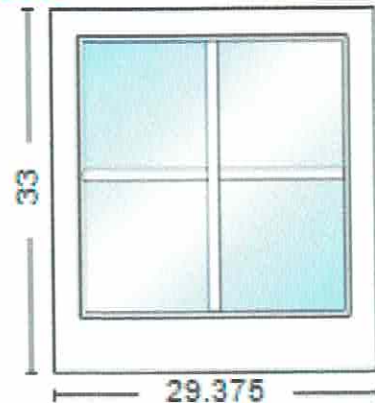


SURVEY FORM
WINDOW # 2

Rough Opening: N/A
Overall Unit Size: N/A

LINE #	LINE TYPE	DESCRIPTION	QTY	U/M
300-1	WindowAndDoor	PK-298	1	

Wood Windows Double Hung Picture 29.375 x 33 ← **COMPLETE WINDOW**
 Custom: Frame Width = 29.375, Frame Height = 33
 Complete Unit, Drawing Numbers = , DP Rating = Standard, Product Offering Special Modification = No
 Pine Exterior, Frame Color = Primed Exterior, Natural, Pine Interior
 Sash-Panel Color = Primed Exterior
 Dual Insulated, Low-E 366, Standard Bead, Argon Gas = Yes, Spacer Channel = Black Warm Edge Spacer
 Simulated Divided Lite, Equal, 7/8", Exterior Grille Color = Primed Exterior, Natural, Pine Interior, w/spacer, Dark Bronze Anodized, 2W2H Entire Set, Brickmould, 2", Casing W/Sill Nose-Subsill, Standard Sillnose-Subsill, Primed Exterior, Casing Applied 4-9/16"
 U-Factor = 0.27, SHGC = 0.19, CR = 65, VT = 0.43, AI = 0.01, CPD = SIE-N-91-00338-00004, Energy Star Region = N,NC,SC,S, GapFill1 = ARG, W m 2k = -1
 Exterior Casing Width = 32, Exterior Casing Height = 34.5
 Rough Opening Width = 30.125, Rough Opening Height = 34.25
 Non-Manufacturer Related =
 Unit 1: Glass Width = 24.5, Glass Height = 25.5, Sash Width = 27.71875, Sash Height = 30.07812



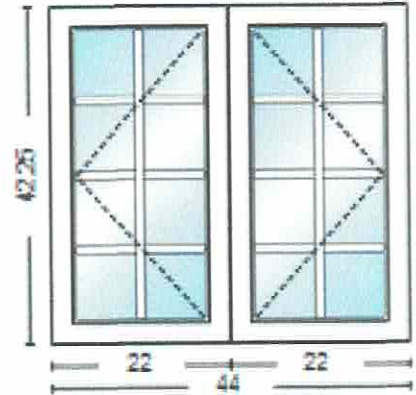
SURVEY FORM WINDOW # 4

Rough Opening: 30.125" X 34.25"
Overall Unit Size: 29.375" X 33"

QUOTE #	QUOTE DATE	CUSTOMER PO#	ORDER PLACED BY	DATE REQUESTED
943896	Quote Not Ordered		cyoun	1/1/0001
JOB NAME	BID BY	QUOTE NAME	ORDER DATE	SHIP DATE
		Sash Replacement	Quote Not Ordered	1/1/0001

LINE #	LINE TYPE	DESCRIPTION	QTY	U/M
400-1	WindowAndDoor	PK- 298	2	

All-Wood Casement-Awning Casement Left / Right 44 x 42.25
 Custom: Frame Width = 22, Frame Height = 42.25, Screen Width = 18.25, Screen Height = 37.4375
 Complete Unit, Drawing Numbers = , DP Rating = Standard, Product Offering Special Modification = No
 Pine Exterior, Frame Color = Primed Exterior, Weatherstrip Color = White, Natural, Pine Interior
 Sash-Panel Color = Primed Exterior, Sash-Panel Weatherstrip Color = White
 Dual Insulated, Low-E 366, Standard Bead, Argon Gas = Yes, Spacer Channel = Black Warm Edge Spacer
 Hardware = Shipped with Unit, E-Guard Finish (Beige), Encore, 03 Bronze, Window Opening Control Device = No
 Screen Option = Full Screen Shipped Separately, 03 Bronze, Fiberglass Mesh
 Simulated Divided Lite, Equal, 7/8", Exterior Grille Color = Primed Exterior, Natural, Pine Interior, w/spacer, Dark Bronze Anodized, 2W4H Tight Mull
 Entire Set, Brickmould, 2", Casing W/Sill Nose-Subsill, Standard Sillnose-Subsill, Primed Exterior, Casing Applied 4-9/16", Interior Mull Casing Applied
 U-Factor = 0.27, SHGC = 0.17, CR = 62, VT = 0.38, AI = 0.01, CPD = SIE-N-117-00240-00004, Energy Star Region = N,NC,SC,S, GapFill1 = ARG, W m 2k = 1.53
 Exterior Casing Width = 47, Exterior Casing Height = 45.15625
 Rough Opening Width = 44.75, Rough Opening Height = 43.5
 Non-Manufacturer Related =
 Unit 1,2: Glass Width = 16.8125, Glass Height = 37.0625, Sash Width = 20.40625, Sash Height = 40.65625
Rough Opening: 44.75" X 43.5"
Overall Unit Size: 44" X 42.25"



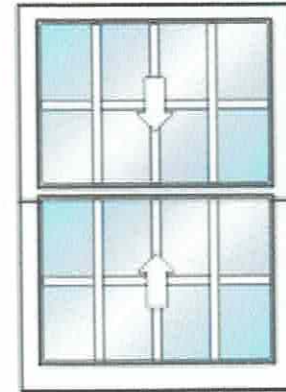
6 5
8 7
SURVEY FORM NUMBERS

COMPLETE WINDOWS

QUOTE #	QUOTE DATE	CUSTOMER PO#	ORDER PLACED BY	DATE REQUESTED
943896	Quote Not Ordered		cyoun	1/1/0001
JOB NAME	BID BY	QUOTE NAME	ORDER DATE	SHIP DATE
		Sash Replacement	Quote Not Ordered	1/1/0001

LINE #	LINE TYPE	DESCRIPTION	QTY	U/M
500-1	WindowAndDoor	PK-298	2	

All-Wood Universal Sash Replacement Kit Double Hung Operating 32.25 x 46.25
 Custom: Sash Opening Width = 32.25, Sash Opening Height = 46.25, Sash Split = 50/50
 Complete Sash Kit, Drawing Numbers = , Sill Angle = 14, Product Offering Special Modification = No
 Pine Exterior, Frame Color = Primed Exterior, Natural, Pine Interior
 Sash-Panel Color = Primed Exterior
 Dual Insulated, Low-E 366, Standard Bead, Argon Gas = Yes, Spacer Channel = Black Warm Edge Spacer
 Standard Hardware Type, 03 Bronze, Jamb Liner Type = Concealed, Lock-Keepers = 1-Lock, Window Opening Control Device = No
 Screen Option = Full Screen Shipped Separately, Exterior Side Screen Stop = Yes, Exterior Head Screen Stop = Yes, White 001, AAMA 2604, Fiberglass Mesh
 Simulated Divided Lite, Equal, 7/8", Exterior Grille Color = Primed Exterior, Natural, Pine Interior, w/spacer, Dark Bronze Anodized, 4W2H Entire Set
 U-Factor = 0.29, SHGC = 0.18, CR = 60, VT = 0.4, AI = 0.01, CPD = SIE-N-112-00271-00002, GapFill1 = ARG, W m 2k = -1
 Non-Manufacturer Related =
 Unit 1: Glass Width = 27.75, Glass Height = 20.09375,
Rough Opening: N/AA
Overall Unit Size: N/AA



SURVEY FORM 9+10

SURVEY FORM 11+12 NO CHANGE

QUOTE #	QUOTE DATE	CUSTOMER PO#	ORDER PLACED BY	DATE REQUESTED
943896	Quote Not Ordered		cyoun	1/1/0001
JOB NAME	BID BY	QUOTE NAME	ORDER DATE	SHIP DATE
		Sash Replacement	Quote Not Ordered	1/1/0001

LINE #	LINE TYPE	DESCRIPTION	QTY	U/M
600-1	WindowAndDoor	PK- 298	2	

All-Wood Universal Sash Replacement Kit Double Hung Operating 36 x 62

Custom: Sash Opening Width = 36, Sash Opening Height = 62, Sash Split = 50/50

Complete Sash Kit, Drawing Numbers = , Sill Angle = 14, Product Offering Special Modification = No

Pine Exterior, Frame Color = Primed Exterior, Natural, Pine Interior

Sash-Panel Color = Primed Exterior

Dual Insulated, Low-E 366, Standard Bead, Argon Gas = Yes, Spacer

Channel = Black Warm Edge Spacer

Standard Hardware Type, 03 Bronze, Jamb Liner Type = Concealed,

Lock-Keepers = 2-Locks, Window Opening Control Device = No

Screen Option = Full Screen Shipped Separately, Exterior Side Screen Stop

= Yes, Exterior Head Screen Stop = Yes, White 001, AAMA 2604,

Fiberglass Mesh

Simulated Divided Lite, Equal, 7/8", Exterior Grille Color = Primed

Exterior, Natural, Pine Interior, w/spacer, Dark Bronze Anodized, 4W2H

Entire Set

U-Factor = 0.29, SHGC = 0.18, CR = 60, VT = 0.4, AI = 0.01, CPD =

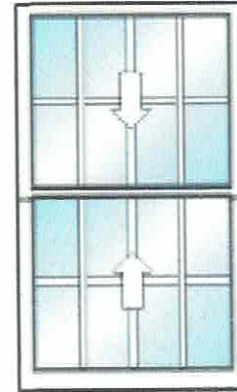
SIE-N-112-00271-00002, GapFill1 = ARG, W m 2k = -1

Non-Manufacturer Related =

Unit 1: Glass Width = 31.5, Glass Height = 27.96875,

Rough Opening: N/AA

Overall Unit Size: N/AA



SURVEY FORM 13 + 14

QUOTE #	QUOTE DATE	CUSTOMER PO#	ORDER PLACED BY	DATE REQUESTED
943896	Quote Not Ordered		cyoun	1/1/0001
JOB NAME	BID BY	QUOTE NAME	ORDER DATE	SHIP DATE
		Sash Replacement	Quote Not Ordered	1/1/0001

LINE #	LINE TYPE	DESCRIPTION	QTY	U/M
700-1	WindowAndDoor	PK-298	2	

All-Wood Universal Sash Replacement Kit Double Hung Operating 32.25 x 58

Custom: Sash Opening Width = 32.25, Sash Opening Height = 58, Sash Split = 50/50

Complete Sash Kit, Drawing Numbers = , Sill Angle = 14, Product Offering Special Modification = No

Pine Exterior, Frame Color = Primed Exterior, Natural, Pine Interior Sash-Panel Color = Primed Exterior

Dual Insulated, Low-E 366, Standard Bead, Argon Gas = Yes, Spacer Channel = Black Warm Edge Spacer

Standard Hardware Type, 03 Bronze, Jamb Liner Type = Concealed, Lock-Keepers = 1-Lock, Window Opening Control Device = No

Screen Option = Full Screen Shipped Separately, Exterior Side Screen Stop = Yes, Exterior Head Screen Stop = Yes, White 001, AAMA 2604,

Fiberglass Mesh

Simulated Divided Lite, Equal, 7/8", Exterior Grille Color = Primed Exterior, Natural, Pine Interior, w/spacer, Dark Bronze Anodized, 3W2H Entire Set

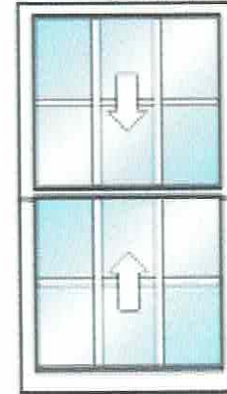
U-Factor = 0.29, SHGC = 0.18, CR = 60, VT = 0.4, AI = 0.01, CPD = SIE-N-112-00271-00002, GapFill1 = ARG, W m 2k = -1

Non-Manufacturer Related =

Unit 1: Glass Width = 27.75, Glass Height = 25.96875,

Rough Opening: N/A

Overall Unit Size: N/A



SURVEY FORM 21 + 23

LINE #	LINE TYPE	DESCRIPTION	QTY	U/M
800-1	WindowAndDoor	PK-298	1	

All-Wood Universal Sash Replacement Kit Double Hung Operating 41.75 x 58

Custom: Sash Opening Width = 41.75, Sash Opening Height = 58, Sash Split = 50/50

Complete Sash Kit, Drawing Numbers = , Sill Angle = 14, Product Offering Special Modification = No

Pine Exterior, Frame Color = Primed Exterior, Natural, Pine Interior Sash-Panel Color = Primed Exterior

Dual Insulated, Low-E 366, Standard Bead, Argon Gas = Yes, Spacer Channel = Black Warm Edge Spacer

Standard Hardware Type, 03 Bronze, Jamb Liner Type = Concealed, Lock-Keepers = 2-Locks, Window Opening Control Device = No

Screen Option = Full Screen Shipped Separately, Exterior Side Screen Stop = Yes, Exterior Head Screen Stop = Yes, White 001, AAMA 2604,

Fiberglass Mesh

Simulated Divided Lite, Equal, 7/8", Exterior Grille Color = Primed Exterior, Natural, Pine Interior, w/spacer, Dark Bronze Anodized, 4W2H Entire Set

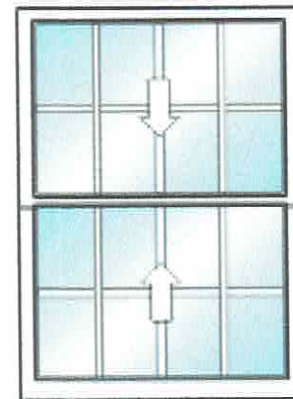
U-Factor = 0.29, SHGC = 0.18, CR = 60, VT = 0.4, AI = 0.01, CPD = SIE-N-112-00271-00002, GapFill1 = ARG, W m 2k = -1

Non-Manufacturer Related =

Unit 1: Glass Width = 37.25, Glass Height = 25.96875,

Rough Opening: N/A

Overall Unit Size: N/A



SURVEY FORM # 22

QUOTE #	QUOTE DATE	CUSTOMER PO#	ORDER PLACED BY	DATE REQUESTED
943896	Quote Not Ordered		cyoun	1/1/0001
JOB NAME	BID BY	QUOTE NAME	ORDER DATE	SHIP DATE
		Sash Replacement	Quote Not Ordered	1/1/0001

LINE #	LINE TYPE	DESCRIPTION	QTY	U/M
900-1	WindowAndDoor	PK- 298	2	

All-Wood Universal Sash Replacement Kit Double Hung Operating 32.5 x 58.25

Custom: Sash Opening Width = 32.5, Sash Opening Height = 58.25, Sash Split = 50/50

Complete Sash Kit, Drawing Numbers = , Sill Angle = 14, Product Offering Special Modification = No

Pine Exterior, Frame Color = Primed Exterior, Natural, Pine Interior Sash-Panel Color = Primed Exterior

Dual Insulated, Low-E 366, Standard Bead, Argon Gas = Yes, Spacer Channel = Black Warm Edge Spacer

Standard Hardware Type, 03 Bronze, Jamb Liner Type = Concealed, Lock-Keepers = 1-Lock, Window Opening Control Device = No

Screen Option = Full Screen Shipped Separately, Exterior Side Screen Stop = Yes, Exterior Head Screen Stop = Yes, White 001, AAMA 2604,

Fiberglass Mesh

Simulated Divided Lite, Equal, 7/8", Exterior Grille Color = Primed Exterior, Natural, Pine Interior, w/spacer, Dark Bronze Anodized, 4W2H

Entire Set

U-Factor = 0.29, SHGC = 0.18, CR = 60, VT = 0.4, AI = 0.01, CPD =

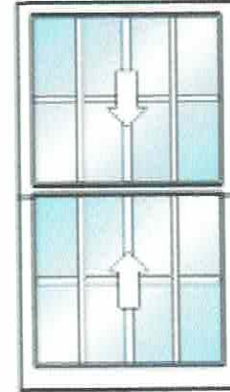
SIE-N-112-00271-00002, GapFill1 = ARG, W m 2k = -1

Non-Manufacturer Related =

Unit 1: Glass Width = 28, Glass Height = 26.09375,

Rough Opening: N/AA

Overall Unit Size: N/AA



SURVEY FORM 25, 26

NO CHANGE TO 27

SILL REPAIR ONLY TO 28

29, 30, 31 - NO CHANGE

QUOTE #	QUOTE DATE	CUSTOMER PO#	ORDER PLACED BY	DATE REQUESTED
943896	Quote Not Ordered		cyoun	1/1/0001
JOB NAME	BID BY	QUOTE NAME	ORDER DATE	SHIP DATE
		Sash Replacement	Quote Not Ordered	1/1/0001

LINE #	LINE TYPE	DESCRIPTION	QTY	U/M
1000-1	WindowAndDoor	PK-298	2	

All-Wood Universal Sash Replacement Kit Double Hung Operating 32.25 x 58

Custom: Sash Opening Width = 32.25, Sash Opening Height = 58, Sash Split = 50/50

Complete Sash Kit, Drawing Numbers = , Sill Angle = 14, Product Offering Special Modification = No

Pine Exterior, Frame Color = Primed Exterior, Natural, Pine Interior Sash-Panel Color = Primed Exterior

Dual Insulated, Low-E 366, Standard Bead, Argon Gas = Yes, Spacer Channel = Black Warm Edge Spacer

Standard Hardware Type, 03 Bronze, Jamb Liner Type = Concealed, Lock-Keepers = 1-Lock, Window Opening Control Device = No

Screen Option = Full Screen Shipped Separately, Exterior Side Screen Stop = Yes, Exterior Head Screen Stop = Yes, White 001, AAMA 2604,

Fiberglass Mesh

Simulated Divided Lite, Equal, 7/8", Exterior Grille Color = Primed Exterior, Natural, Pine Interior, w/spacer, Dark Bronze Anodized, 3W2H Entire Set

U-Factor = 0.29, SHGC = 0.18, CR = 60, VT = 0.4, AI = 0.01, CPD =

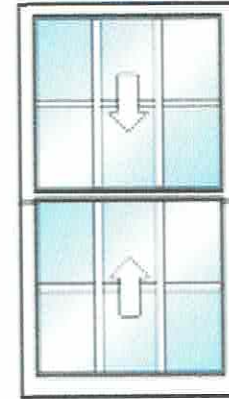
SIE-N-112-00271-00002, GapFill1 = ARG, W m 2k = -1

Non-Manufacturer Related =

Unit 1: Glass Width = 27.75, Glass Height = 25.96875,

Rough Opening: N/AA

Overall Unit Size: N/AA



SURVEY FORM 35 + 37

QUOTE #	QUOTE DATE	CUSTOMER PO#	ORDER PLACED BY	DATE REQUESTED
943896	Quote Not Ordered		cyoun	1/1/0001
JOB NAME	BID BY	QUOTE NAME	ORDER DATE	SHIP DATE
		Sash Replacement	Quote Not Ordered	1/1/0001

LINE #	LINE TYPE	DESCRIPTION	QTY	U/M
1100-1	WindowAndDoor	PK-298	1	

All-Wood Universal Sash Replacement Kit Double Hung Operating 41.75 x 58

Custom: Sash Opening Width = 41.75, Sash Opening Height = 58, Sash Split = 50/50

Complete Sash Kit, Drawing Numbers = , Sill Angle = 14, Product Offering Special Modification = No

Pine Exterior, Frame Color = Primed Exterior, Natural, Pine Interior Sash-Panel Color = Primed Exterior

Dual Insulated, Low-E 366, Standard Bead, Argon Gas = Yes, Spacer Channel = Black Warm Edge Spacer

Standard Hardware Type, 03 Bronze, Jamb Liner Type = Concealed, Lock-Keepers = 2-Locks, Window Opening Control Device = No

Screen Option = Full Screen Shipped Separately, Exterior Side Screen Stop = Yes, Exterior Head Screen Stop = Yes, White 001, AAMA 2604,

Fiberglass Mesh

Simulated Divided Lite, Equal, 7/8", Exterior Grille Color = Primed Exterior, Natural, Pine Interior, w/spacer, Dark Bronze Anodized, 4W2H Entire Set

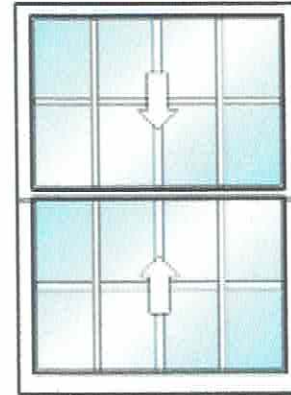
U-Factor = 0.29, SHGC = 0.18, CR = 60, VT = 0.4, AI = 0.01, CPD = SIE-N-112-00271-00002, GapFill1 = ARG, W m 2k = -1

Non-Manufacturer Related =

Unit 1: Glass Width = 37.25, Glass Height = 25.96875,

Rough Opening: N/AA

Overall Unit Size: N/AA



SURVEY FORM 36

*** WINDOW # 38 - NO CHANGES**

LINE #	LINE TYPE	DESCRIPTION	QTY	U/M
1200-1	WindowAndDoor	PK-298	2	

All-Wood Universal Sash Replacement Kit Double Hung Operating 34.25 x 58.25

Custom: Sash Opening Width = 34.25, Sash Opening Height = 58.25, Sash Split = 50/50

Complete Sash Kit, Drawing Numbers = , Sill Angle = 14, Product Offering Special Modification = No

Pine Exterior, Frame Color = Primed Exterior, Natural, Pine Interior Sash-Panel Color = Primed Exterior

Dual Insulated, Low-E 366, Standard Bead, Argon Gas = Yes, Spacer Channel = Black Warm Edge Spacer

Standard Hardware Type, 03 Bronze, Jamb Liner Type = Concealed, Lock-Keepers = 2-Locks, Window Opening Control Device = No

Screen Option = Full Screen Shipped Separately, Exterior Side Screen Stop = Yes, Exterior Head Screen Stop = Yes, White 001, AAMA 2604,

Fiberglass Mesh

Simulated Divided Lite, Equal, 7/8", Exterior Grille Color = Primed Exterior, Natural, Pine Interior, w/spacer, Dark Bronze Anodized, 4W2H Entire Set

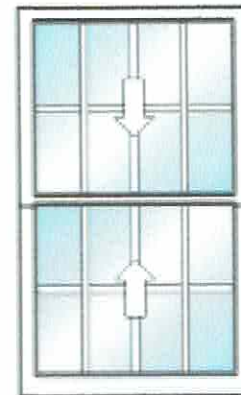
U-Factor = 0.29, SHGC = 0.18, CR = 60, VT = 0.4, AI = 0.01, CPD = SIE-N-112-00271-00002, GapFill1 = ARG, W m 2k = -1

Non-Manufacturer Related =

Unit 1: Glass Width = 29.75, Glass Height = 26.09375,

Rough Opening: N/AA

Overall Unit Size: N/AA



SURVEY FORM 39+40

QUOTE #	QUOTE DATE	CUSTOMER PO#	ORDER PLACED BY	DATE REQUESTED
943896	Quote Not Ordered		cyoun	1/1/0001
JOB NAME	BID BY	QUOTE NAME	ORDER DATE	SHIP DATE
		Sash Replacement	Quote Not Ordered	1/1/0001

LINE #	LINE TYPE	DESCRIPTION	QTY	U/M
1300-1	WindowAndDoor	PK- 298	1	

All-Wood Universal Sash Replacement Kit Double Hung Operating 36.25 x 58.25

Custom: Sash Opening Width = 36.25, Sash Opening Height = 58.25, Sash Split = 50/50

Complete Sash Kit, Drawing Numbers = , Sill Angle = 14, Product Offering Special Modification = No

Pine Exterior, Frame Color = Primed Exterior, Natural, Pine Interior Sash-Panel Color = Primed Exterior

Dual Insulated, Low-E 366, Standard Bead, Argon Gas = Yes, Spacer Channel = Black Warm Edge Spacer

Standard Hardware Type, 03 Bronze, Jamb Liner Type = Concealed, Lock-Keepers = 2-Locks, Window Opening Control Device = No Screen Option = Full Screen Shipped Separately, Exterior Side Screen Stop = Yes, Exterior Head Screen Stop = Yes, White 001, AAMA 2604,

Fiberglass Mesh

Simulated Divided Lite, Equal, 7/8", Exterior Grille Color = Primed Exterior, Natural, Pine Interior, w/spacer, Dark Bronze Anodized, 4W2H Entire Set

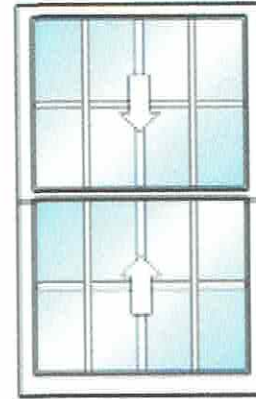
U-Factor = 0.29, SHGC = 0.18, CR = 60, VT = 0.4, AI = 0.01, CPD = SIE-N-112-00271-00002, GapFill1 = ARG, W m 2k = -1

Non-Manufacturer Related =

Unit 1: Glass Width = 31.75, Glass Height = 26.09375,

Rough Opening: N/AA

Overall Unit Size: N/AA



SURVEY FORM #32

QUOTE #	QUOTE DATE	CUSTOMER PO#	ORDER PLACED BY	DATE REQUESTED
943896	Quote Not Ordered		cyoun	1/1/0001
JOB NAME	BID BY	QUOTE NAME	ORDER DATE	SHIP DATE
		Sash Replacement	Quote Not Ordered	1/1/0001

LINE #	LINE TYPE	DESCRIPTION	QTY	U/M
1400-1	WindowAndDoor	PK- 298	2	

All-Wood Universal Sash Replacement Kit Double Hung Operating 40.25 x 60

Custom: Sash Opening Width = 40.25, Sash Opening Height = 60, Sash Split = 50/50

Complete Sash Kit, Drawing Numbers = , Sill Angle = 14, Product Offering Special Modification = No

Pine Exterior, Frame Color = Primed Exterior, Natural, Pine Interior

Sash-Panel Color = Primed Exterior

Dual Insulated, Low-E 366, Standard Bead, Argon Gas = Yes, Spacer

Channel = Black Warm Edge Spacer

Standard Hardware Type, 03 Bronze, Jamb Liner Type = Concealed,

Lock-Keepers = 2-Locks, Window Opening Control Device = No

Screen Option = Full Screen Shipped Separately, Exterior Side Screen Stop

= Yes, Exterior Head Screen Stop = Yes, White 001, AAMA 2604,

Fiberglass Mesh

Simulated Divided Lite, Equal, 7/8", Exterior Grille Color = Primed

Exterior, Natural, Pine Interior, w/spacer, Dark Bronze Anodized, 4W2H

Entire Set

U-Factor = 0.29, SHGC = 0.18, CR = 60, VT = 0.4, AI = 0.01, CPD =

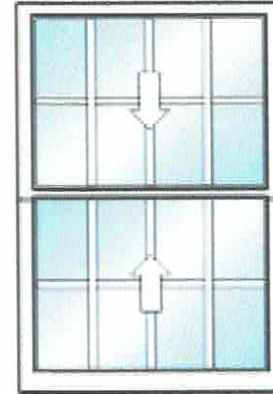
SIE-N-112-00271-00002, GapFill1 = ARG, W m 2k = -1

Non-Manufacturer Related =

Unit 1: Glass Width = 35.75, Glass Height = 26.96875,

Rough Opening: N/AA

Overall Unit Size: N/AA



SURVEY FORM # 33+34

REPLACE YOUR OLD DOUBLE HUNG WINDOWS WITH NEW ENERGY-EFFICIENT SIERRA PACIFIC WINDOWS WITHOUT REMOVING YOUR EXISTING WINDOW FRAME.

If your existing double hung window frames are still in good condition, here's the smartest, least expensive, most convenient way to replace them. Sierra Pacific easy-fill replacement sash kits are sized to fit your existing sash opening. They install very easily. It's all accomplished from inside your home—without removing your existing frame, sill, interior or exterior trim.

As with every Sierra Pacific product, better engineering in our sash kit means noticeably better performance. Both sash fill easily to make removal and cleaning a snap. Both sash operate smoothly and seat completely.

So you get all the benefits of today's newest window technology without the expense and mess of a big remodeling project.

HERE'S WHY SIERRA PACIFIC SASH KITS ARE SUPERIOR TO OTHERS:

1. Unlike other sash kits, our balances are concealed. You'll appreciate the difference immediately.
2. Our sash kits are adjustable for superior installation and smoother operation.
3. Our wood is protected to the very core with CoreGuard™ only. Sierra Pacific has it.
4. Our sash kits are protected on the outside by double-thick, heavy-duty, 0.055-extruded-aluminum-cladding.
5. Our optional integral screen channel is a first.



AVAILABLE WITH THE FULL RANGE OF SIERRA PACIFIC OPTIONS.

PICK YOUR FAVORITE COLOR.

COLOR STAY™ COLLECTION



Windows to be wood interior, wood exterior

The exterior of Sierra Pacific sash kits is fully enhanced in low maintenance, heavy-duty, extruded aluminum. Ours is at least twice as thick as our competitors' roll-form cladding.

What's more, our finishing process leads the industry in durability and environmental safety.

Non-hazardous AAMA 2604 and 2605 powder-coatings have the color retention, surface hardness and scratch resistance necessary to withstand even the harshest conditions.

As for colors? Nobody gives you more choices than Sierra Pacific. 75 colors and some sensational textures allow you to add warmth, a splash of cheerfulness or a new statement to your designs. We'll also custom match any color you choose.

TEXTURED COLLECTION



METALLIC COLLECTION



ANODIZED COLLECTION



Colors available in vinyl. See your representative for color matching, samples.

TEXTURED COLLECTION



WEATHERED COLLECTION



INDUSTRIAL COLLECTION



HIGH PERFORMANCE GLAZING OPTIONS.

MEASURING & SIZING INFORMATION.

What's the best glazing for your replacement windows and patio doors?

Obviously, what's best for a freezing northern winter is not necessarily right for a hot southern summer. We have the answer: With one of the broadest selections of glazing options in the window industry, Sierra Pacific lets you choose exactly the right performance glass for your exact weather and environmental conditions.

You can choose glazing to improve your energy efficiency and lower your energy bills. You can capture the sun's heat, or reflect it. You can also reduce outside noise, block the sun's damaging UV rays, or even enhance your privacy.

Dual Pane Warm Edge Low-E

Insulated for improved energy efficiency. Single surface low-E coating to reduce solar heat gain and block UV rays.

Low-E 366

Cardinal's triple layer silver product with Warm Edge Spacer, a high density foam, for superior performance. 65% UV protection. Solar heat gain coefficient of 0.27. Also available with Preserve* protective film or with Preserve and Neat* coating for a naturally cleaner glass.

Low-E 366 with 189 Coating**

The same superior performance as regular Low-E 366 (above), but with the addition of 189 coating on the interior surface to increase insulating value and reduce solar heat gain. Meets even the most extreme requirements in the majority of the Canadian Energy Star zones. Also available with Preserve protective film or with Preserve and Neat coating.

Low-E 340

Cardinal's newest glazing innovation. It has an amazingly low 0.18* solar low-e energy coefficient to keep out the heat even in the blazing sun. Slightly tinted. Block efficient glass for UV rays. Less heat gain when it's hot, less heat loss when it's cold, and efficient glare control. Also available with Preserve protective film or with Preserve and Neat coating.

Low-E 180 Passive Solar

A very high (0.70*) coefficient for capturing solar heat gain. Ideal for reducing your heating bills in colder climates. Superior insulation value blocks cold and keeps in the heat. Also available with Preserve protective film or with Preserve and Neat coating.

Low-E 180 Passive Solar with 189 Coating**

The same superior performance as regular Low-E 180 (above), but with the addition of 189 coating on the interior surface to increase insulating value. Meets even the most extreme requirements in the majority of the Canadian Energy Star zones. Also available with Preserve protective film or with Preserve and Neat coating for a naturally cleaner glass.

Insulated Glass

For moderate climates. Basic glazing with basic performance.

We can use clear insulated glass if required.

Sound Control

Reduces outside noise by as much as 50% while blocking 99% of damaging UV rays. Laminated for shatter resistance. Available insulated or non-insulated.

Additional Options:

Obscure Glass

Tempered Glass

Tinted Glass

We offer 11 different decorative glass styles to help you create unique window designs, filter harsh sunlight or enhance privacy and security. From fancy to simple, formal to casual, each has its own personality and lends its own character to your décor. For the optimum in one-of-a-kind, custom designed windows, consider our leaded or stained glass. Your options are limitless. We'll work with you to handle anything your mind can imagine.

*All values shown are center of glass. **Low-E further coating. Also known as surface 189. Applied to the interior (warm-side) surface of a dual-pane air unit, resulting in improved thermal performance and lower heating costs. Because the coating reflects heat back into the room, the coating side of glass will be slightly colder in winter, causing a higher potential for surface condensation. ***Available when ordering in large quantities.

How To Measure:

1. Measure the width of your existing sash opening from the inside of the wood on the left jamb to the inside of the wood on the right jamb in 3 different places: top, middle, bottom.



2. Measure the sash opening (pocket) height from the head jamb to where the exterior of the bottom sash sits on the sill when fully closed. Measure at the left side, middle, and right side.



- Tools Needed:
- Level
 - Measuring tapes
 - Pry tools
 - Utility knife
 - Flathead screwdriver
 - Phillips screwdriver
 - Small finishing nails
 - Hammer
 - Miller gauge and protractor
 - Saw
 - Safety glasses
 - Drill and drill bits

3. Measure your sill angle using a miter gauge and protractor, or use another angle measuring tool available at your hardware store. (The standard sill angle for Sierra Pacific sash kits is 14 degrees, but any angle between 5 and 14 degrees is available if specified.)



Custom sizes in 1/8" increments Available

Minimum Size:

16.5" x 30.5" sash opening

Maximum Size:

Sash opening widths up to 44". Heights up to 92.5"

Sash kits can adjust to fit an opening width by as much as 1/8" via jambliner compression and installation screw adjustment. The sash opening height cannot be adjusted from the actual opening height.

Step 1 Prepare the opening.



Step 2 Install new jamb and balances.



Step 3 Install new sash.



Step 4 Install new head weatherstripping.



Step 5 Enjoy your new window.





SIERRA All-Wood Casement Window

For Product Built 06/25/2012 to Present

SECTION DETAILS
 Drawn to 1" = 1" Scale
 Printed Scale 3" = 1'
 4 9/16" & 6 9/16" JAMB

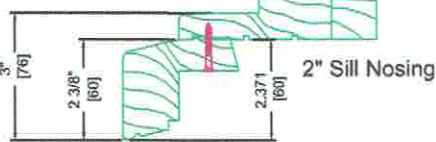
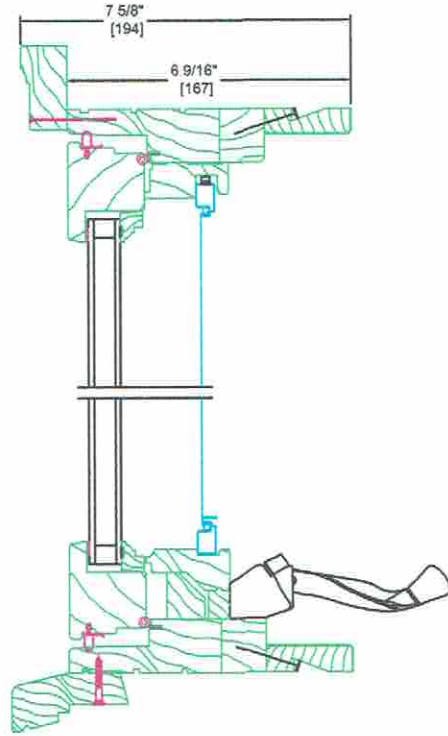
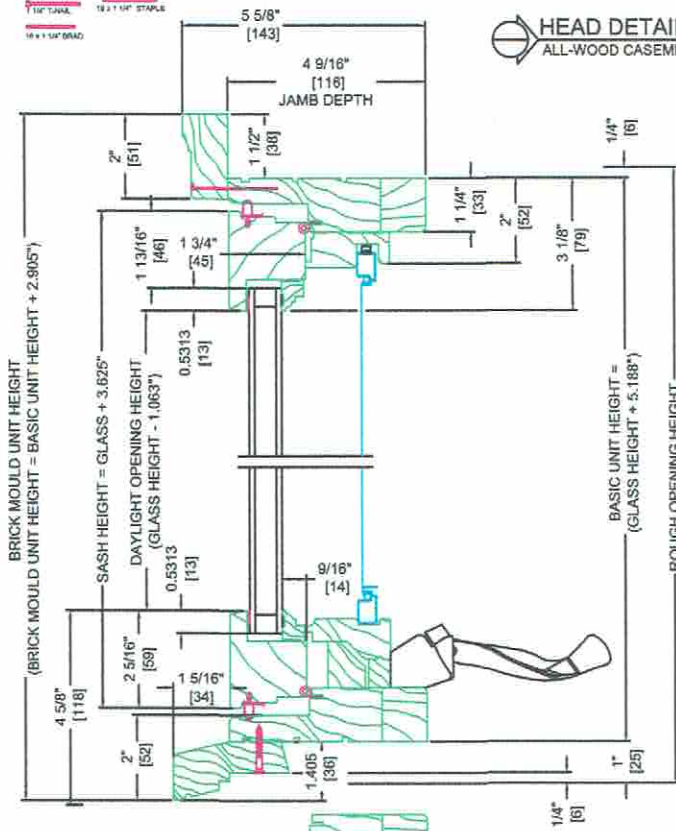
PAGE 1 of 4

*JAMB EXTENSION MAY BE APPLIED WITH STAINLESS STEEL 18 (1/4) x 1-1/4" STAPLE.
 BRAD NAILS, 1" or 1 1/2" T-NAILS OR SCREWS (PRE-DRILL AND COUNTERSINKING REQUIRED WHEN USING SCREWS).

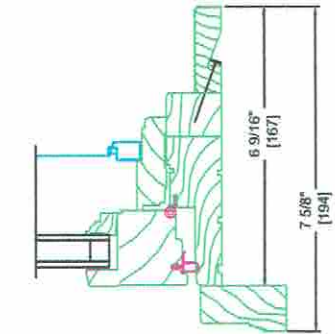
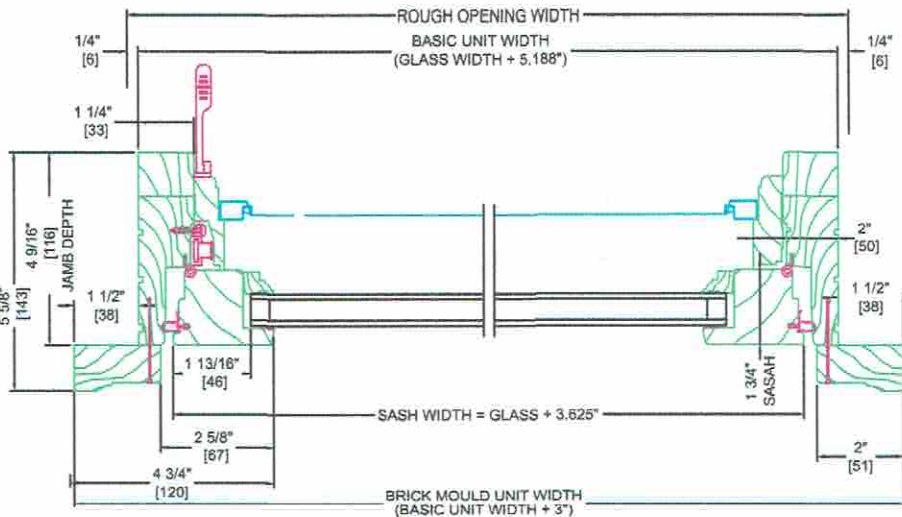


HEAD DETAIL
 ALL-WOOD CASEMENT, OPERATING

Glass Height +3.625" = Sash Height
 Glass Width +3.625" = Sash Width



SILL DETAIL
 ALL-WOOD CASEMENT, OPERATING



JAMB DETAIL
 ALL-WOOD CASEMENT, OPERATING

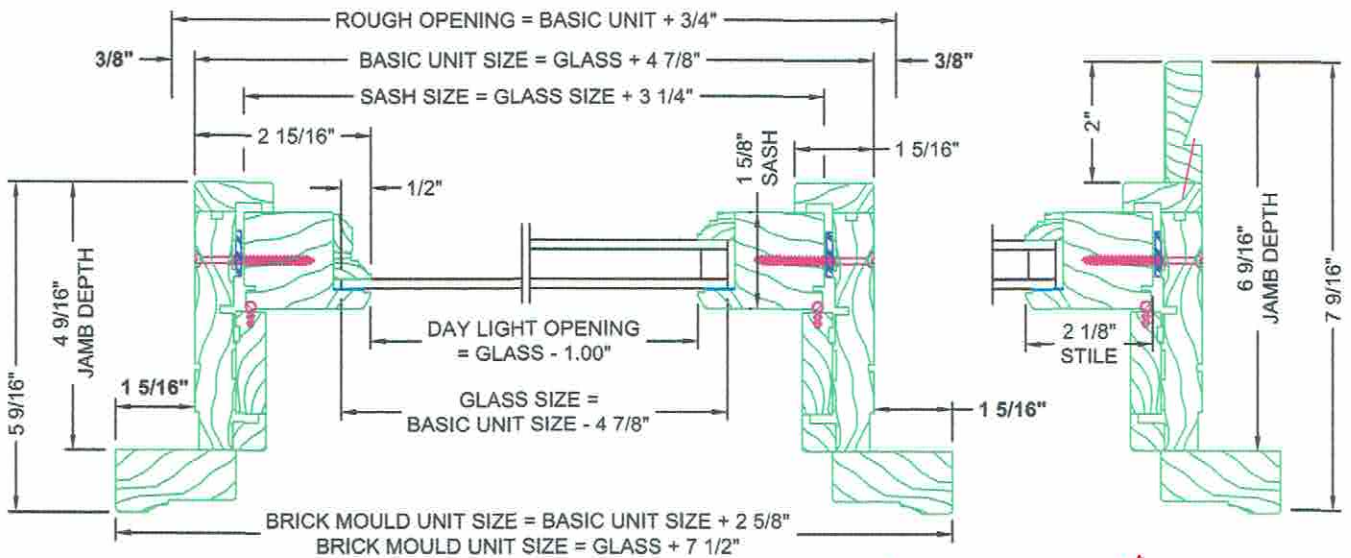
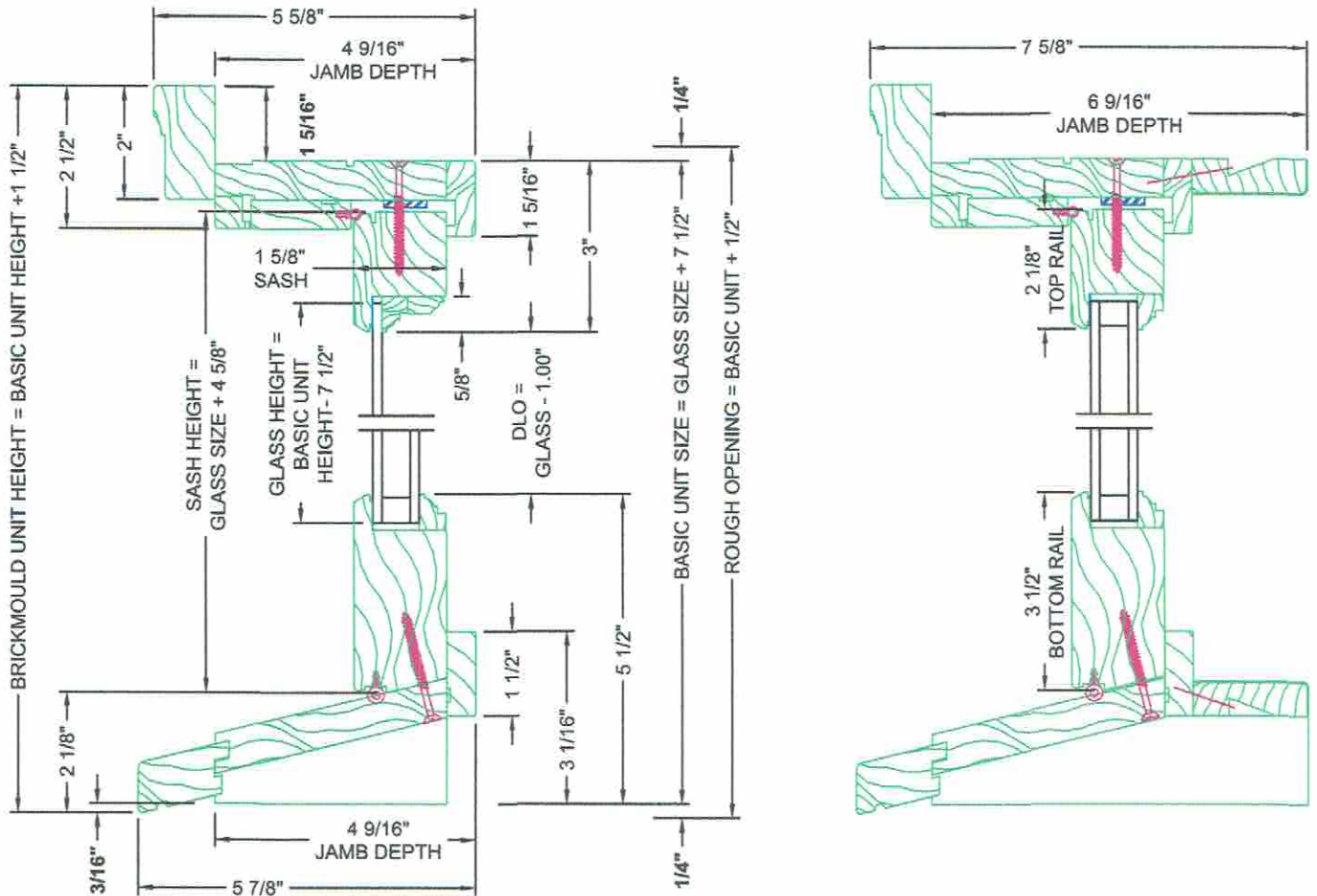
WINDOWS 5, 6, 7, 8
 OPERABLE TWIN CASEMENTS



SIERRA
 PACIFIC
 WINDOWS

All-Wood

Tilt Double Hung Picture & Custom Picture Windows



WINDOW # 4 - DOUBLE HUNG
 PICTURE WINDOW



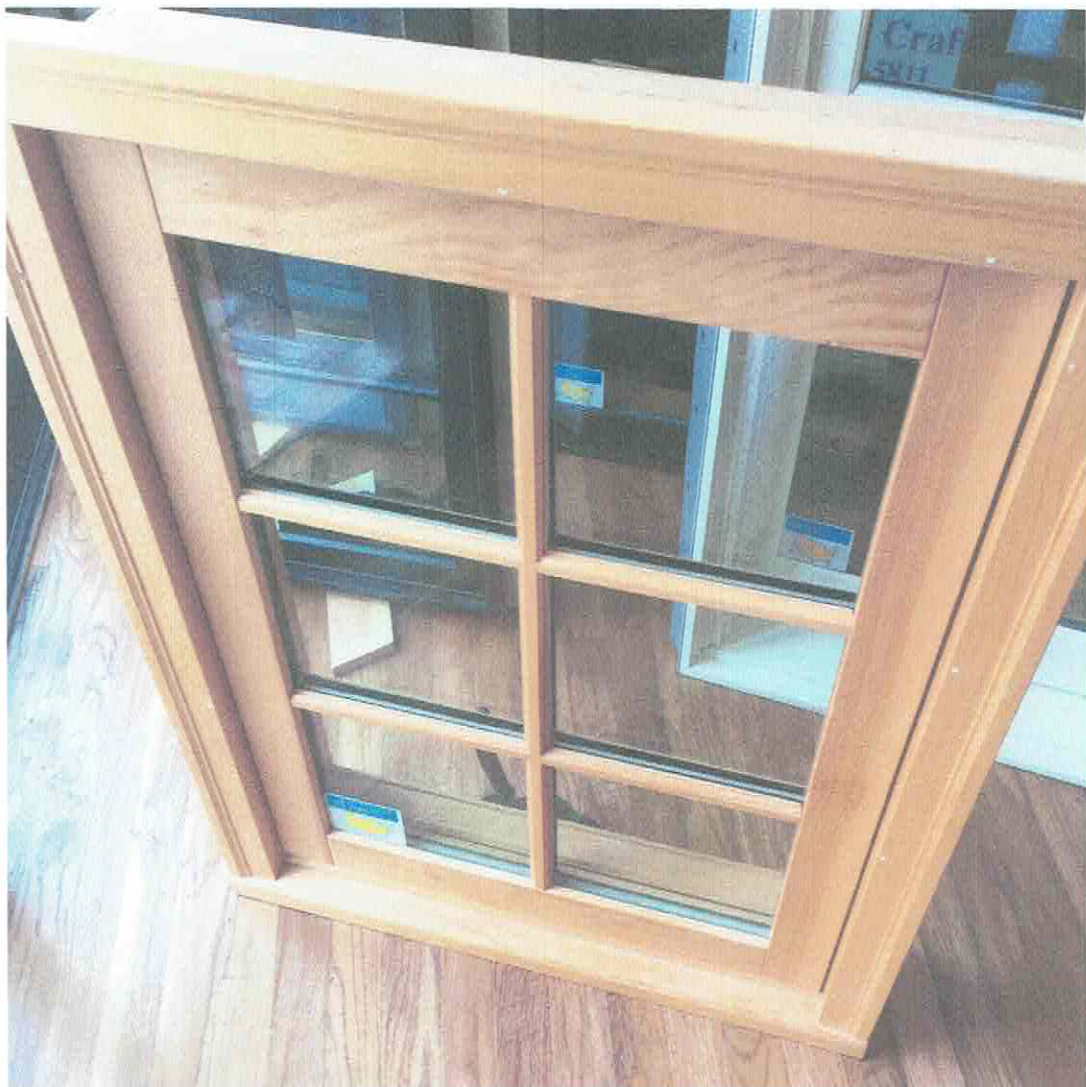
GRIPS BARS FOR
1, 2, 3, 13, 14, 21, 22, 23, 25, 26
32, 33, 34, 35, 36, 37, 39
40, 41, 42, 43



GRIND BARS FOR WINDOWS
1, 2, 3, 13, 14, 21, 22, 23, 25, 26
32, 33, 34, 35, 36, 37, 39, 40,
41, 42, 43



GRILLE BARS FOR
WINDOWS 4, 5, 6, 7, 8



GRILLE BARS FOR
WINDOWS 4, 5, 6, 7, 8