



No. 41 - 2608 Hibernia

Approx. 1885-95;

Description: Victorian, 2 story, main hip roof, inset front porches, both floors, 1/1 windows, decorative shingle, wide stringer and cornice under siding, large square porch posts;

Condition: Good - covered but restorable.



No. 42 - 2614 Hibernia

Approx. 1880-90;

Description: Greek Revival, original 'L' plan with 'L' addition to back, intersecting gables, punch tin vents in gable ends, central chimney, pediment window heads, 2 front doors with transoms, square Doric porch columns, 2/2 windows, corner boards, barge board.

Condition: Excellent - one of kind in area.



No. 43 - 2616 Hibernia

Approx. 1885-90;

Description: 'I' house, 2 story with shallow hip roof, shorter 2 story section on rear with hip roof, angled cornice, mansard roofed front porch with Doric column deep cornice and decorative brackets, 1/1, 9/9 windows, central front door, narrow lap.

Condition: Excellent.

Significance: one of kind in area.

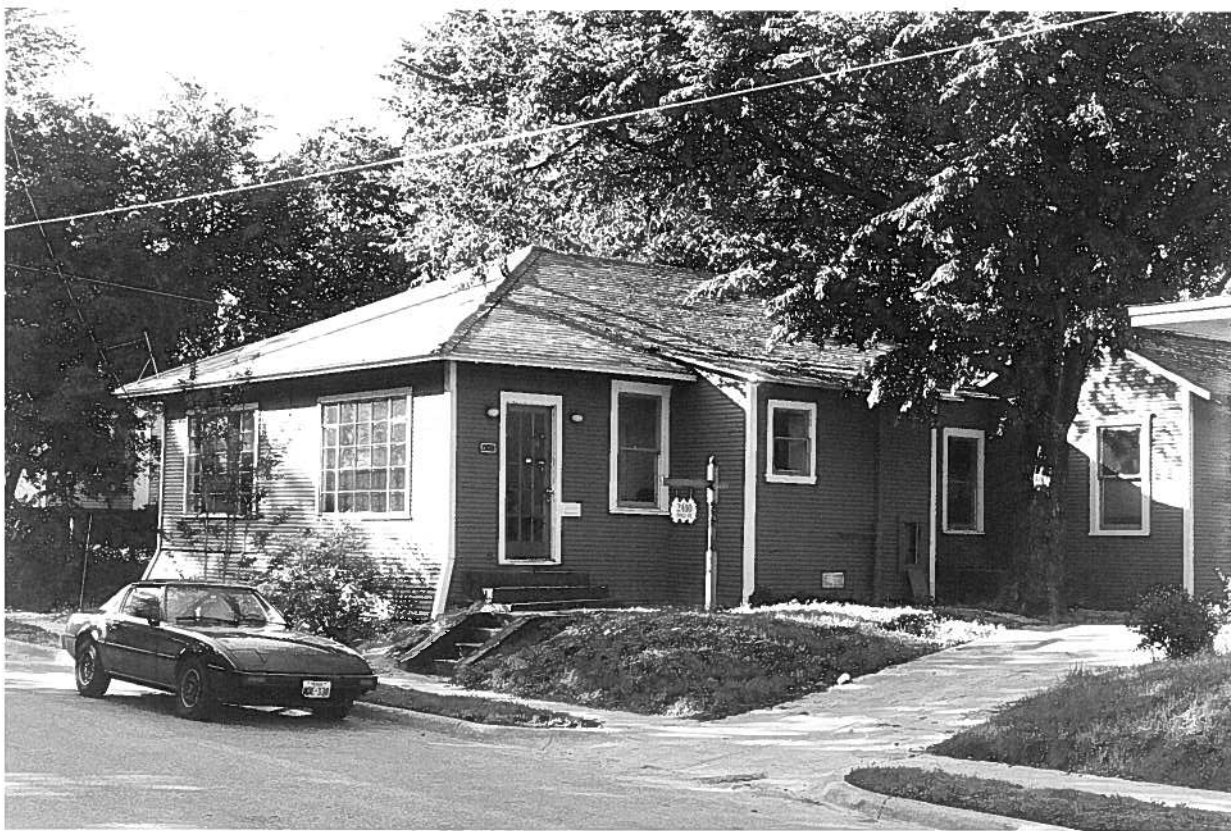


No. 44 - 2618-20 Hibernia

Approx. 1915-1925;

Description: Planbook style, pyramid roof, gable porch roof, 2/2 windows, exposed rafter ends, 3 square porch posts at each corner, paired windows on each side.

Condition: Good.



No. 45 - 2410 Boll

Approx. 1930;

Description: Bungalow style, battered foundation walls, industrial steel sash multi-pane windows on Boll Street elevation, 1/1 windows in front, low pitched hip roof.

Condition: Excellent.



No. 46 - 2508-10 Boll

Approx. 1905-15;

Description: Planbook, main hip roof, narrow
lap board siding, exposed rafter ends.

Condition: Good.



No. 47 - 2511 Boll

Approx. 1900-10;

Description: Planbook, intersecting gables, shakes in gable end, narrow lap siding, side-lights and transom, cornice window heads, brick porch piers, Doric columns.

Condition: Excellent - recently restored.



No. 48 - 2415 Boll

Approx. 1910-15;

Description: Planbook, main gable roof with smaller porch gable roof extension, 1/1 windows, exposed rafter ends, narrow wood trim.

Condition: Good.

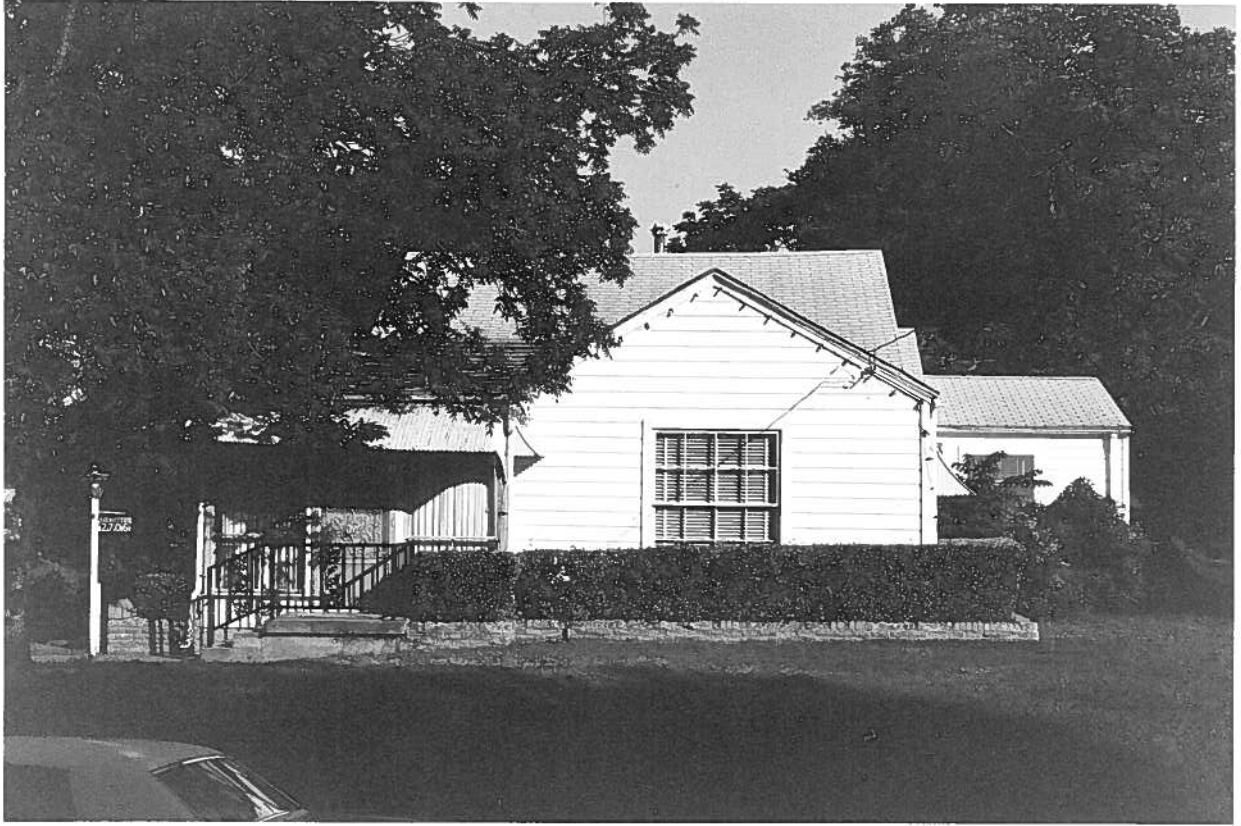


No. 49 - 2700 Hibernia

Approx. 1890-95;

Description: Victorian planbook, steep hip roof, front gable extension with fishscale shingles in gable end, transom over front door, 1/1 windows, shed porch roof with heavy square porch columns, simple layered barge board.

Condition: Excellent - recently restored.



No. 50 - 2706 Hibernia

Approx 1920-25;

Description: Planbook, intersecting gable roof, porch encl. later, 2 story addn. to rear, 2 other addns. to rear, new siding, 6/6 8/8 windows.

Condition: Good - numerous addns.

Significance: None.