



Joppa Neighborhood Improvements

April 25th, 2023



CRIADO

Civil Engineering | Land Surveying | SUE | R.O.W. | CE&I

Introductions

- Council Member - Adam Bazaldua Council District 7
- City of Dallas Department of Transportation and Interagency Partners
- Criado & Associates Engineering Team



CRIADO

Agenda

- Project Purpose
- Project Overview
- Project Background
- Proposed Improvements
- Next Steps
- Q & A



CRIADO

Project Purpose

- Restore connectivity, accessibility, and safety to the Joppa Community through:
 - Construction of an adjacent Pedestrian Bridge to Linfield Road over the UPRR
 - Providing safety enhancements along Carbondale west to the railroad tracks
 - Implementation of Pedestrian Crossing Improvements at Carbondale/Loop 12 (S Great Trinity Forest Way)



CRIADO

Project Overview



**Pedestrian Bridge
at Linfield Road**

Carbondale Street

**S Great Trinity
Forest Way
(Loop 12)**



CRIADO

Project Background

- In 2001, a motor vehicle bridge was constructed but did not include provisions for safe pedestrian crossing.
- In 2015, this at-grade crossing was voted on by the Joppa community to close in exchange for constructing a pedestrian bridge over the Union Pacific Railroad tracks servicing the UPRR Miller Yard.
- Joppa community meetings culminated in the vote to close the at-grade crossing in exchange for construction of a pedestrian bridge over the UPRR Miller Yard in 2015. Funding was approved by City Council in 2019 from NCTCOG for the construction of the bridge, from NCTCOG for improvements at LP 12 and Carbondale, and from the UPRR to assist the City and the Joppa neighborhood to address the issues the permanent closure of the at-grade crossing at Linfield Road had caused on pedestrian crossings until the new pedestrian bridge is constructed. Additional funds from TxDOT were received in Jan 2021 for intersection improvements at LP 12 and Carbondale Road. The pedestrian bridge funds from the UPRR were allocated to pay for DART “on-demand” transportation services from Oct 2020 until Oct 2023, or until the construction of the pedestrian bridge, whichever comes first.
- In 2019, the at-grade crossing at Miller Yard was permanently closed, further restricting pedestrian access to Linfield west of the rail yard and to LP 310 (South Central Expressway).
- Funding was approved by City Council in 2019.
- Design was approved in 2021.



CRIADO

Proposed Improvements

- Building a pedestrian bridge parallel to the Linfield Road bridge
- Improving S. Great Trinity Forest Way (Loop 12) access at the Carbondale intersection
- Pedestrian improvements for S. Great Trinity Forest Way (Loop 12)
- Improving community walkability to meet the pedestrian needs for safety and accessibility

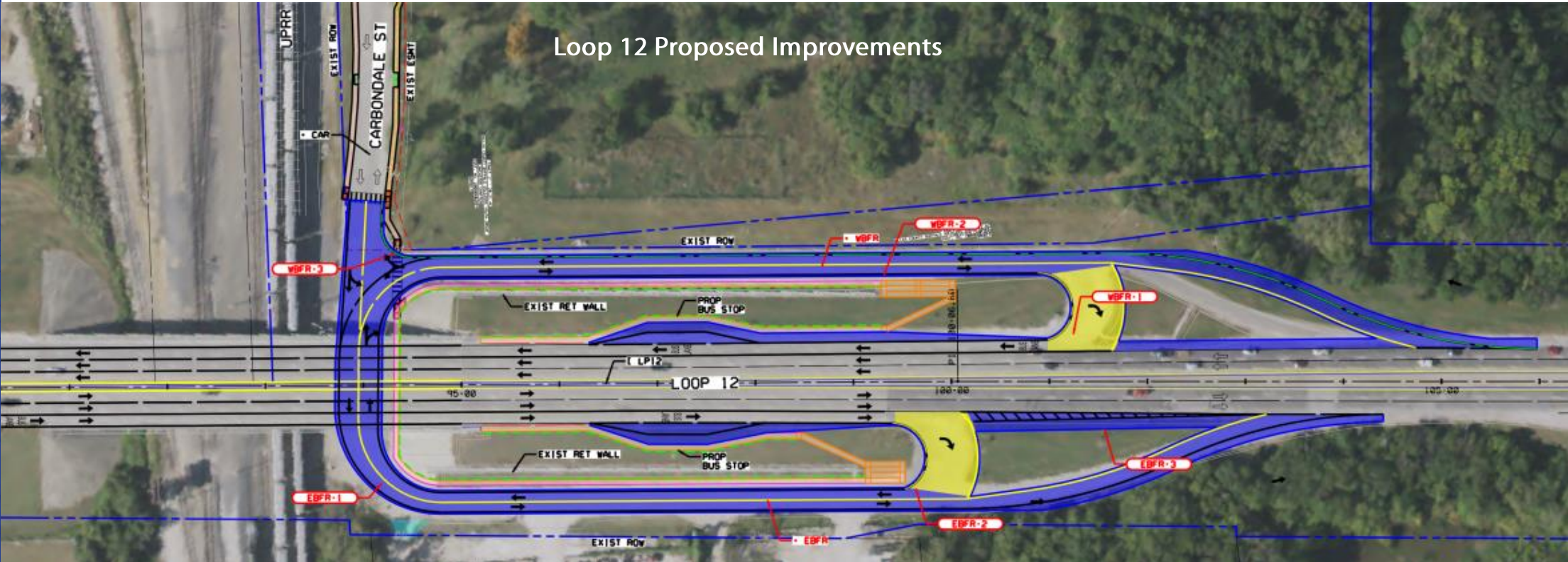


Linfield Road Pedestrian Bridge



CRIADO

Loop 12 Proposed Improvements



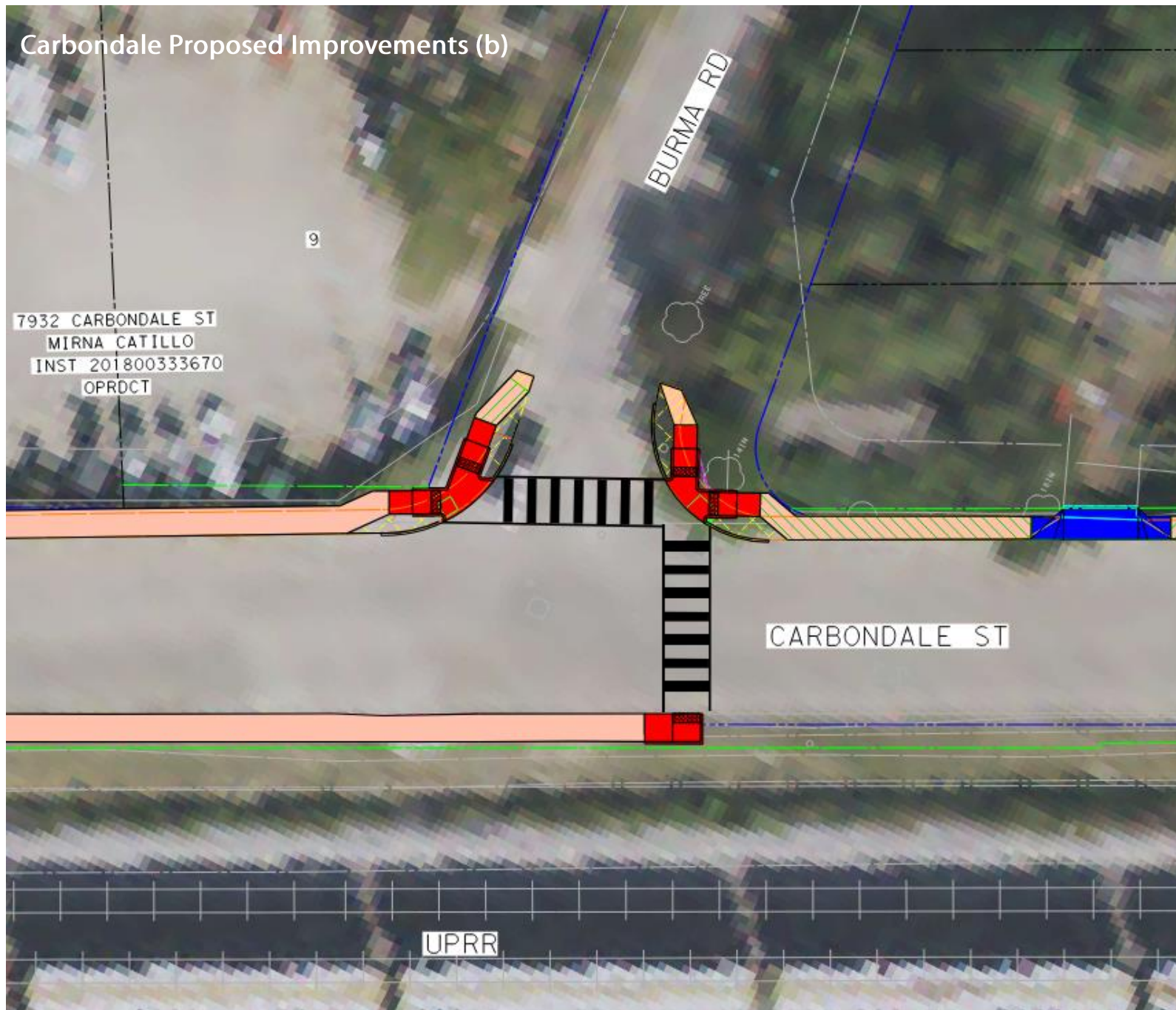
CRIADO



CRIADO



Carbondale Proposed Improvements (b)



CRIADO

Next Steps

- Compiling Input
- Refine Design
- Stakeholder Meeting
- Public Hearing
- Finalize Design
- Construction award anticipated to be in Q2 2024



CRIADO



Questions?

CRIADO

Kris Johnson, PE
Interagency CIP Manager

Dakota Partain, PE
Project Manager

kristopher.johnson@dallas.gov

dpartain@criadoassociates.com

