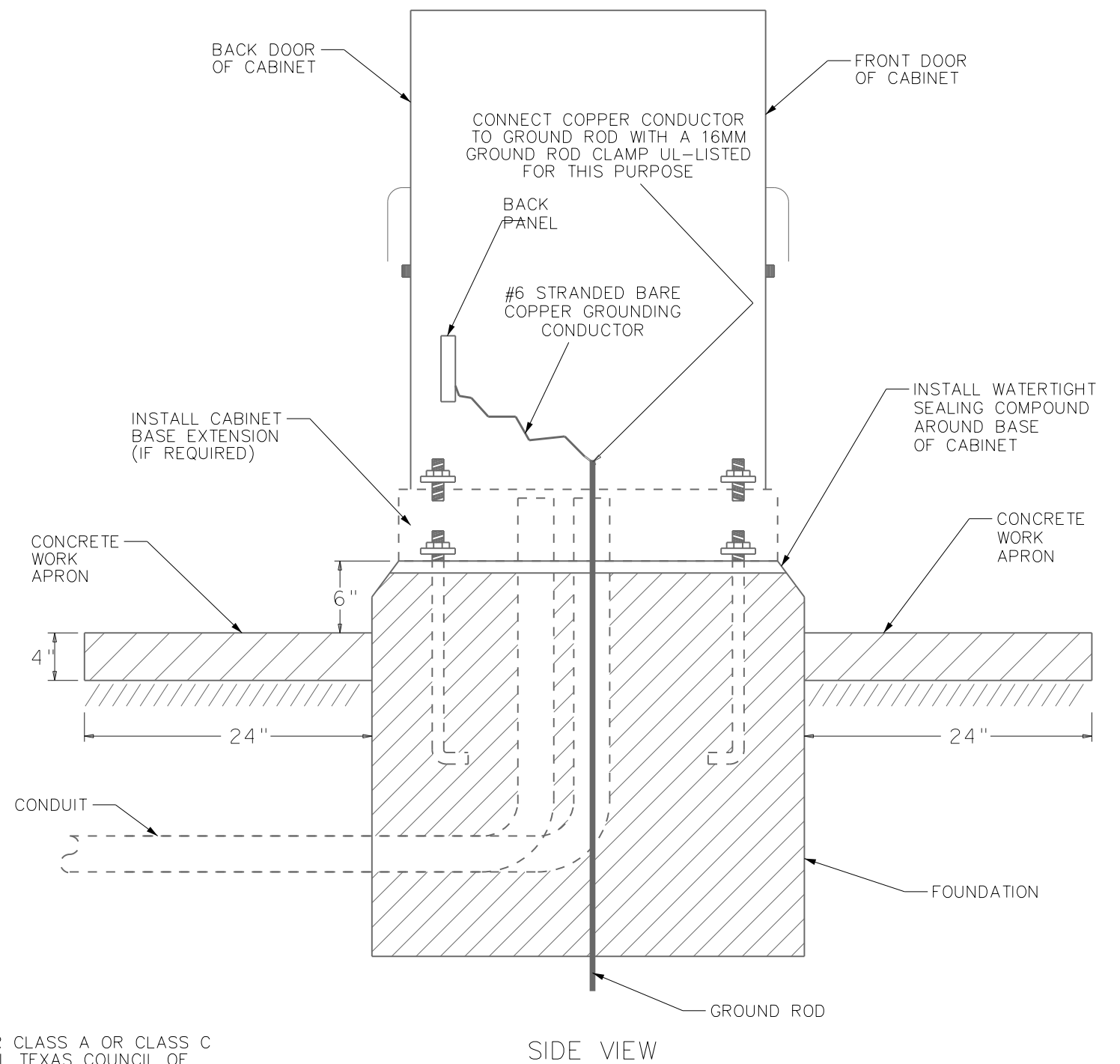
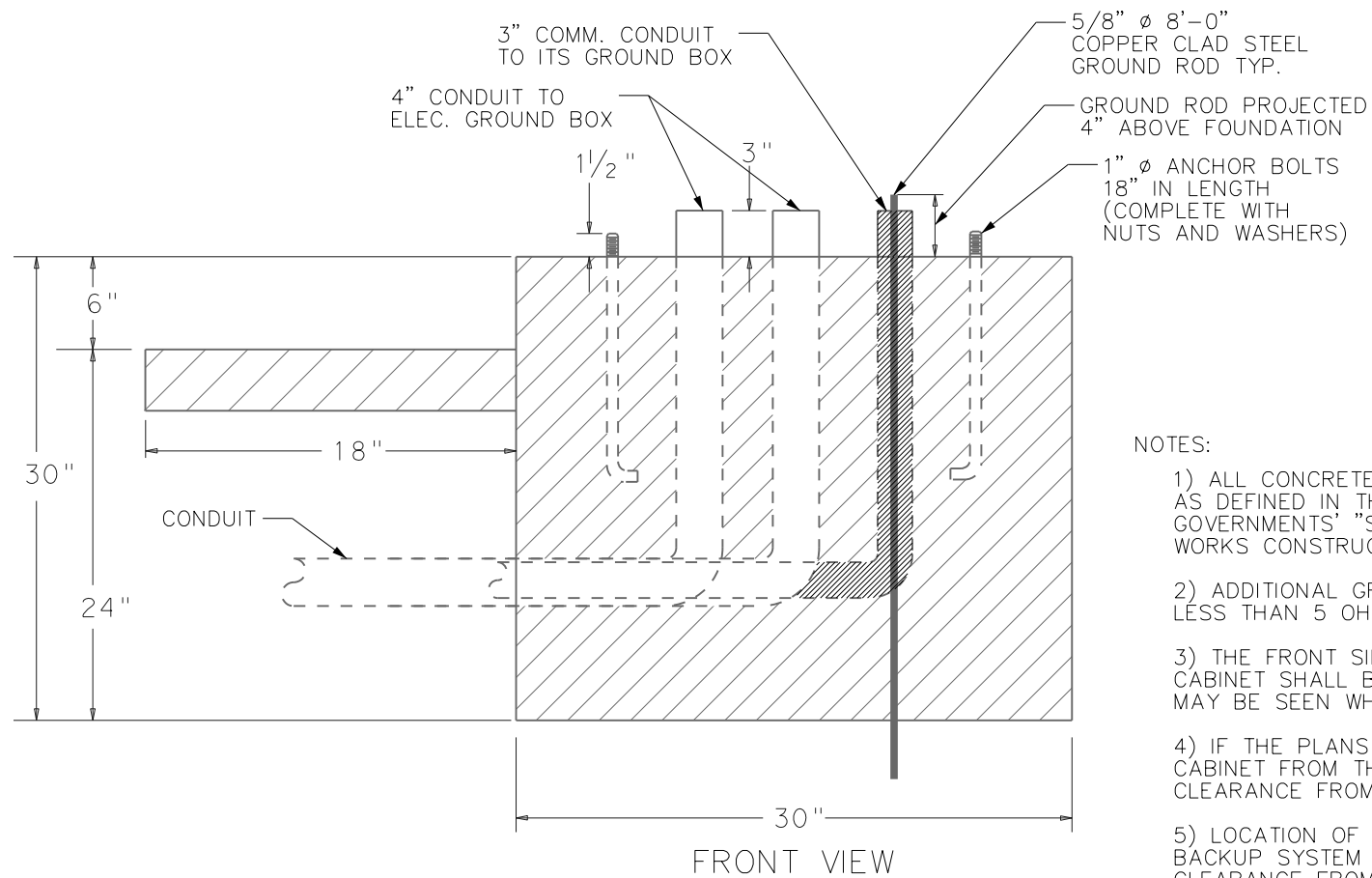
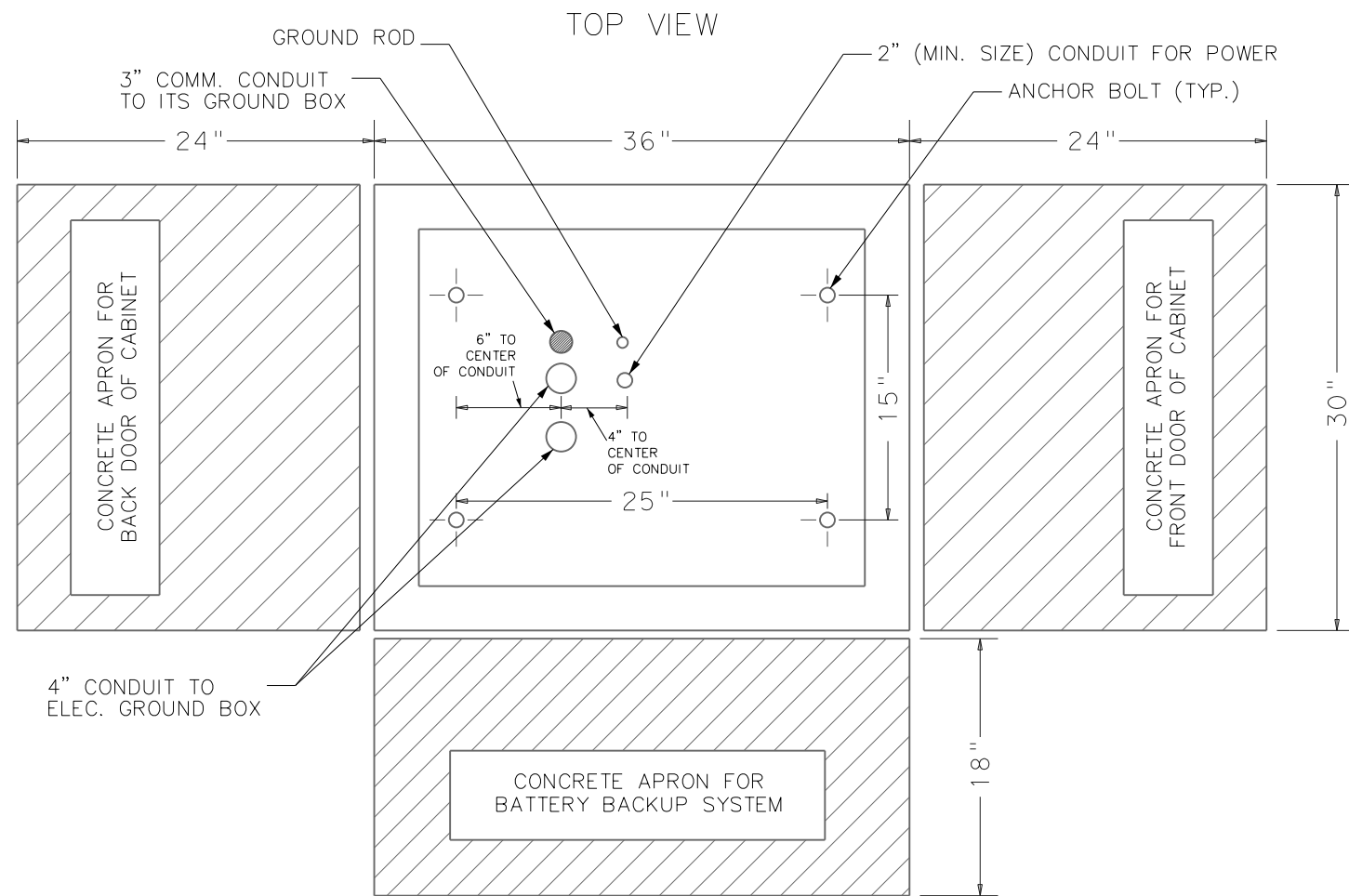


BASE MOUNTED CONTROLLER CABINET FOUNDATION DETAILS

(FOR TYPE 332, 352i CONTROLLER CABINETS)



NOTES:

- 1) ALL CONCRETE SHALL BE EITHER CLASS A OR CLASS C AS DEFINED IN THE NORTH CENTRAL TEXAS COUNCIL OF GOVERNMENTS' "STANDARD SPECIFICATIONS FOR PUBLIC WORKS CONSTRUCTION" ITEM 7.4.5
- 2) ADDITIONAL GROUND RODS MAY BE NEEDED TO ACHIEVE LESS THAN 5 OHMS RESISTANCE TO GROUND.
- 3) THE FRONT SIDE OF THE TRAFFIC SIGNAL CONTROLLER CABINET SHALL BE ORIENTED SUCH THAT THE INTERSECTION MAY BE SEEN WHEN VIEWING THE CONTROLLER FRONT PANEL.
- 4) IF THE PLANS DO NOT INDICATE SPACING OF THE CABINET FROM THE CURB, PROVIDE FOR A 48" MINIMUM CLEARANCE FROM CURB.
- 5) LOCATION OF THE CONCRETE APRON FOR THE BATTERY BACKUP SYSTEM MAY NEED TO BE ADJUSTED BASED ON CLEARANCE FROM THE CURB AND AVAILABLE RIGHT-OF-WAY.

CITY OF DALLAS
DEPARTMENT OF TRANSPORTATION

CITY OF DALLAS
2023 TRAFFIC SIGNAL CONSTRUCTION
DESIGN SPECIFICATIONS

DRAWN	DESIGN	DATE	SCALE	VERSION
ACC	SRV	8/10/2023	AS NOTED	1.4