

If the cost was equivalent, would you rather the city construct...



**Option 1**

10 miles of protected cycle track facilities on arterial roadways?

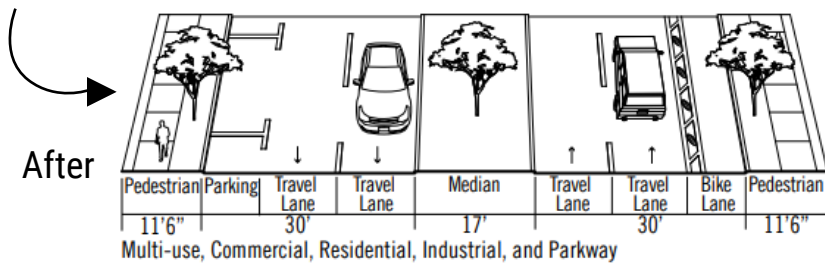
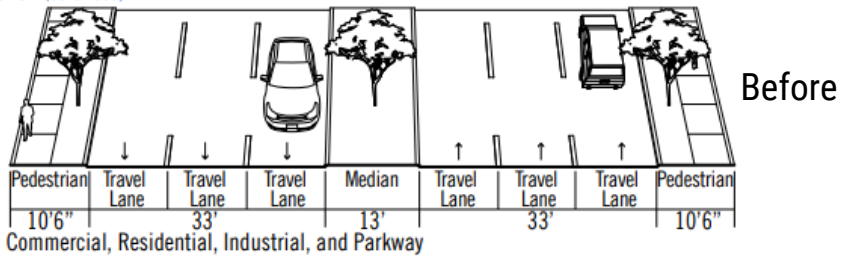
or



**Option 2**

50 miles of bike boulevard facilities on local neighborhood roads?

# Would you rather...



**Option 1**

or

**Option 2**

Remove a vehicle travel lane on a larger, main roadway to incorporate a new bike lane?

Implement bike safety improvements on a parallel, lower-stress neighborhood street (ex. adding traffic calming features like speed bumps and/or bulb-outs)?

# Would you rather the city prioritize biking infrastructure to provide...



**Option 1**

Routes to and from  
downtown?

or



**Option 2**

Among local neighborhood  
commercial centers?

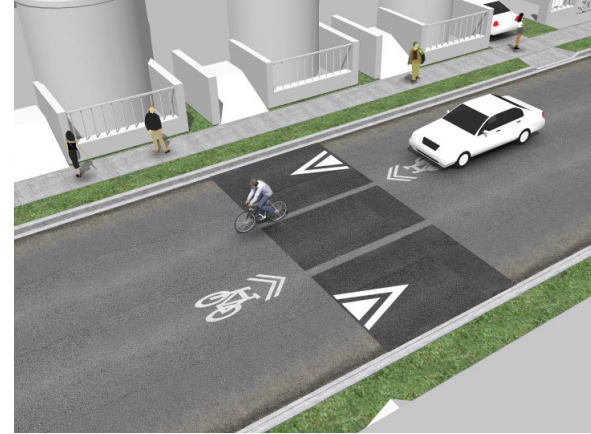
# Would you rather bicycle on...



## Option 1

A busier, higher-stress main roadway with high-quality, separated bike facilities that provides more direct connections to your destinations?

or



## Option 2

A bike boulevard facility located on a local, lower-stress neighborhood street that would potentially take longer to get to your destination than a more direct route?

# Would you rather bike to...



## Option 1

A grocery store?

or



## Option 2

A local park?