

# Memorandum



CITY OF DALLAS

DATE February 27, 2015

TO Members of the Budget, Finance & Audit Committee: Jerry R. Allen (Chair),  
Jennifer S. Gates (Vice Chair), Tennell Atkins, Sheffie Kadane, Philip T. Kingston

SUBJECT Dallas Central Appraisal District 2015- 2016 Proposed Budget

The Budget, Finance, and Audit Committee's March 2, 2015 agenda includes a briefing on the Dallas Central Appraisal District (DCAD) 2015-2016 Proposed Budget. DCAD's summary materials are attached for your information. Mr. Ken Nolan, Executive Director and Chief Appraiser for DCAD, will present the budget and answer questions.

The DCAD Board of Directors plans to adopt the district's budget on May 6, 2015. From that point, taxing units have 30 days to pass a resolution if they choose not to approve the budget. It does not take effect and the DCAD Board must adopt a new budget within 30 days.

Please contact me if you need additional information.

  
Jeanne Chipperfield  
Chief Financial Officer

## Attachment

c: Honorable Mayor and Members of City Council  
A.C. Gonzalez, City Manager  
Warren M.S. Ernst, City Attorney  
Craig D. Kinton, City Auditor  
Rosa A. Rios, City Secretary  
Daniel F. Solis, Administrative Judge  
Ryan S. Evans, First Assistant City Manager

Jill A. Jordan, P.E., Assistant City Manager  
Joey Zapata, Assistant City Manager  
Mark McDaniel, Assistant City Manager  
Eric D. Campbell, Assistant City Manager  
Sana Syed, Public Information Officer  
Elsa Cantu, Assistant to the City Manager



**DALLAS CENTRAL  
APPRAISAL DISTRICT**

**2015 - 2016**

**PROPOSED BUDGET**

# **BUDGET OVERVIEW**



**2015 - 2016**

**PROPOSED BUDGET**

@

# Dallas Central Appraisal District

## 2015/2016 Proposed Budget

### Budget Comparison

### Executive Summary

	<b>2014/2015</b>	<b>2015/2016</b>
	<b><u>Approved</u></b>	<b><u>Proposed</u></b>
<b>BUDGET EXPENDITURES:</b>		
Salaries & Wages	\$12,980,393	\$13,231,728
Auto Expense	765,140	767,540
Supplies & Materials	616,421	697,577
Operational Services	75,000	68,500
Maintenance of Structure	352,928	363,333
Maintenance of Equipment	260,145	270,482
Contractual Services	499,539	579,498
Sundry Expenses	295,704	324,056
Insurance & Benefits	5,544,681	5,689,801
Professional Services	1,500,781	1,570,855
Capital Expenditures	119,100	113,970
Technology Development	0	0
Contingency	0	0
Total Expenditures	\$23,009,832	\$23,677,340
<b>OPERATING FUND SOURCES:</b>		
Entity Allocations (Local Support)	\$22,339,832	\$23,437,340
Transfer Funds from 2012/2013	430,000	0
Rendition Fees	230,000	230,000
Investment Proceeds	0	0
Other Income	10,000	10,000
Total Revenues	\$23,009,832	\$23,677,340



2015/2016

## PROPOSED BUDGET OVERVIEW

The 2015/2016 Proposed Budget is highlighted in the attached document as follows:

1. The 2015/2016 Proposed Budget of \$23,667,340 is an increase of 2.90% from the 2014/2015 Approved Budget of \$23,009,832. This compares favorably to the 5.20% budget increase from last year.
2. The 2015/2016 Proposed Budget calls for a total of 228 full-time positions which is the same as the total in the 2014/2015 Budget. Twenty-six (26) positions have been eliminated over the previous 6 years. The budget notes personnel by departments/divisions as follows:
  - **Office of Chief Appraiser Department.** The department has four (4) positions and includes the divisions of Chief Appraiser's Office, the Community Relations Officer, and Quality Control. The Human Resource Division responsibilities have been moved from this Department to the Administrative Services Department.
  - **Administrative Services Department.** The divisions included in this department are Administration, Finance/Purchasing, Human Resources, Customer Service, Appeals and Support, Building Services and the Appraisal Review Board (ARB). There are thirty four (34) employees in this department and ninety (90) ARB members. The Human Resources Division was moved to this Department for the 2015/2016 Proposed Budget.
  - **Legal Services Department.** There are a total of three (3) employees in this department.
  - **Information Technology (IT) Department.** The divisions included are Information Technology and the Geographic Information System (GIS). There is a total of sixteen (16) employees in this department.
  - **Appraisal Services Department.** This department includes the divisions of Central Appraisal, Residential, Commercial, Business Personal Property, and Property Records/Exemptions totaling one hundred seventy one (171) employees.
3. For the 2015/2016 Proposed Budget a 3% merit increase is proposed for the District employees. This figure is tied directly to the average salary/merit increases and adjustments given by the taxing entities in 2014/2015, which was 3.14%. This information is obtained from an entity salary survey of all participating entities in the Appraisal District. DCAD bases any merit increases on what the taxing entities have afforded to their employees. Funds are also added to address the Paid Time Off program.
4. Overtime funds are included for appraisal support staff assisting with legally required after hours informal and formal hearings with property owners during the ARB process. Funds are also included for Building Services, Appeals and Support, Human Resources, Customer Service, and the Appraisal Departments during the ARB process.
5. Contract Labor includes funds for temporary services for the Business Personal Property verification and leased equipment projects, temporary clerical help during the ARB process, and for off-duty police officers used during the ARB process.

6. Other increases and decreases in the Proposed Budget are noted in the categories as follows:

**Auto Expenses** for the monthly auto allowance for all appraisal staff remains at \$600 per month and for management/administrative staff at \$200 per month.

**Supplies and Materials** increased slightly versus last year's budget primarily in the categories of Postage and Freight, Computer Supplies, and Software costs. Postage costs were increased for the mailing of appraisal and ARB notices. Cost increases were also noted in Office Equipment Expense and Building Supplies categories.

**Operational Services** is the District's telephone communication system. Slight decrease was noted from the previous year. A new phone system was installed the first of 2015 which will affect future costs.

**Maintenance of Structure** shows a slight increase overall. Electricity costs increased slightly based on higher rates projected by the P3 Power Pool. The Building Services and Utilities categories also increased in this budget. All other costs remained constant.

**Maintenance of Equipment** increased in the line items of PC Maintenance and Software Maintenance. Software maintenance costs increased which maintains the iPad computers as the field devices for the appraisal staff. The PC Maintenance includes maintenance funds on thirty four scanners, and three in house printers for small print jobs. The maintenance on the iPad devices is included.

**Contractual Services** increased slightly due to the Lease of Equipment category which covers the lease payments of the Pen Pad devices and for the orthography updates in GIS. Categories also increasing were the Copier System expense and Other, which handles all of the mailing service costs.

**Sundry Expenses** noted a slight increase in the categories of Training costs, Dues and Subscriptions, and Travel costs. Management Development had a slight increase for projected training expenses.

**Insurance and Benefits** increased in the categories of Group Medical Insurance and Retirement. Group Medical costs are anticipated at a rate of 12% and the Retirement expense is at a rate of 19% to keep the employee program current. A slight increase was noted for Group Benefits which captures only the premium payments for all ancillary insurance programs and in the Medicare Tax category. Also a slight increase was noted in the General Insurance category.

**Professional Services** increased slightly overall from last year due to increased costs in ARB Compensation service fees. Total number of hearing days and members service were added. Lawsuit activity showed a slight increase from the previous fiscal year but the fees remain constant. A slight increase in the Auxiliary Legal Expense, Arbitration Expense, and SOAH hearings, (State Office of Administrative Hearings) was noted for possible lawsuit activity. Consultants Expense was decreased slightly from the previous budget year.

**Capital Expenditures** notes an overall decrease. Funds are budgeted for Equipment in IT including two (2) Dell R710 Servers, two (2) Dell MD3220 Disk Arrays, one (1) Dell N4032F Switch, eight (8) Dell N2048 Switches, and one (1) battery cabinet for the Uninterrupted Power Supply (UPS) system.

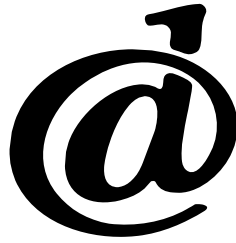
**Technology Development and Capital Improvement**, includes no requested or budgeted funds for this fiscal year. Capital Improvement projects are funded from surplus funds approved by the Board of Directors upon the approval of the Capital Improvement Plan annually.



## Dallas Central Appraisal District 10 Year Budget Analysis

	2005/2006	2006/2007	2007/2008	2008/2009	2009/2010
<b>Budget Amount</b>	\$19,872,073	\$20,373,440	\$20,960,025	\$21,380,063	\$21,799,127
<b>Budget Increase/Decrease</b>	\$527,997	\$501,367	\$586,585	\$420,038	\$419,064
<b>% Budget Increase/Decrease</b>	2.73%	2.52%	2.88%	2.00%	1.96%
<b>Merit Increases</b>	3.00%	3.75%	4.00%	3.50%	3.00%
<b>Entity Salary Survey</b>	3.55%	3.74%	4.23%	3.58%	3.19%
<b># of Personnel</b>	255	255	255	250	245





## Dallas Central Appraisal District 10 Year Budget Analysis

2010/2011	2011/2012	2012/2013	2013/2014	2014/2015	2015/2016
\$21,733,893	\$21,516,555	\$21,516,555	\$21,872,977	\$23,009,832	\$23,677,340
-\$65,234	-\$217,338	\$0	\$356,422	\$1,136,855	\$667,508
-0.30%	-1.00%	0.00%	1.66%	5.20%	2.90%
0.00%	0.00%	0.00%	3.00%	3.00%	3.00%
1.50%	1.09%	1.08%	3.13%	2.92%	3.14%
240	232	229	229	228	228

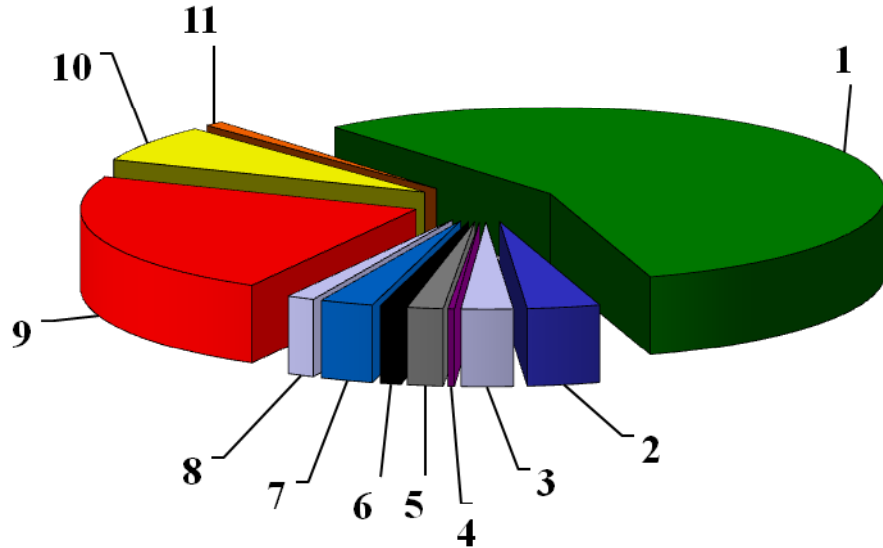
# Dallas Central Appraisal District

## Proposed Areas Of Change

	2014/2015	2015/2016	Increase or	Percent
	<u>Approved</u>	<u>Proposed</u>	<u>Decrease</u>	<u>Variance</u>
<b>BUDGET EXPENDITURES:</b>				
Salaries & Wages	\$12,980,393	\$13,231,728	\$251,335	1.94%
Auto Expense	\$765,140	\$767,540	\$2,400	0.31%
Supplies & Materials	\$616,421	\$697,577	\$81,156	13.17%
Operational Services	\$75,000	\$68,500	(\$6,500)	-8.67%
Maintenance of Structure	\$352,928	\$363,333	\$10,405	2.95%
Maintenance of Equipment	\$260,145	\$270,482	\$10,337	3.97%
Contractual Services	\$499,539	\$579,498	\$79,959	16.01%
Sundry Expenses	\$295,704	\$324,056	\$28,352	9.59%
Insurance & Benefits	\$5,544,681	\$5,689,801	\$145,120	2.62%
Professional Services	\$1,500,781	\$1,570,855	\$70,074	4.67%
Capital Expenditures	\$119,100	\$113,970	(\$5,130)	-4.31%
Technology Development	\$0	\$0	\$0	0.00%
Contingency	\$0	\$0	\$0	0.00%
Total Expenditures	<u>\$23,009,832</u>	<u>\$23,677,340</u>	<u>\$667,508</u>	<u>2.90%</u>

# 2015/2016

## Budget by Category

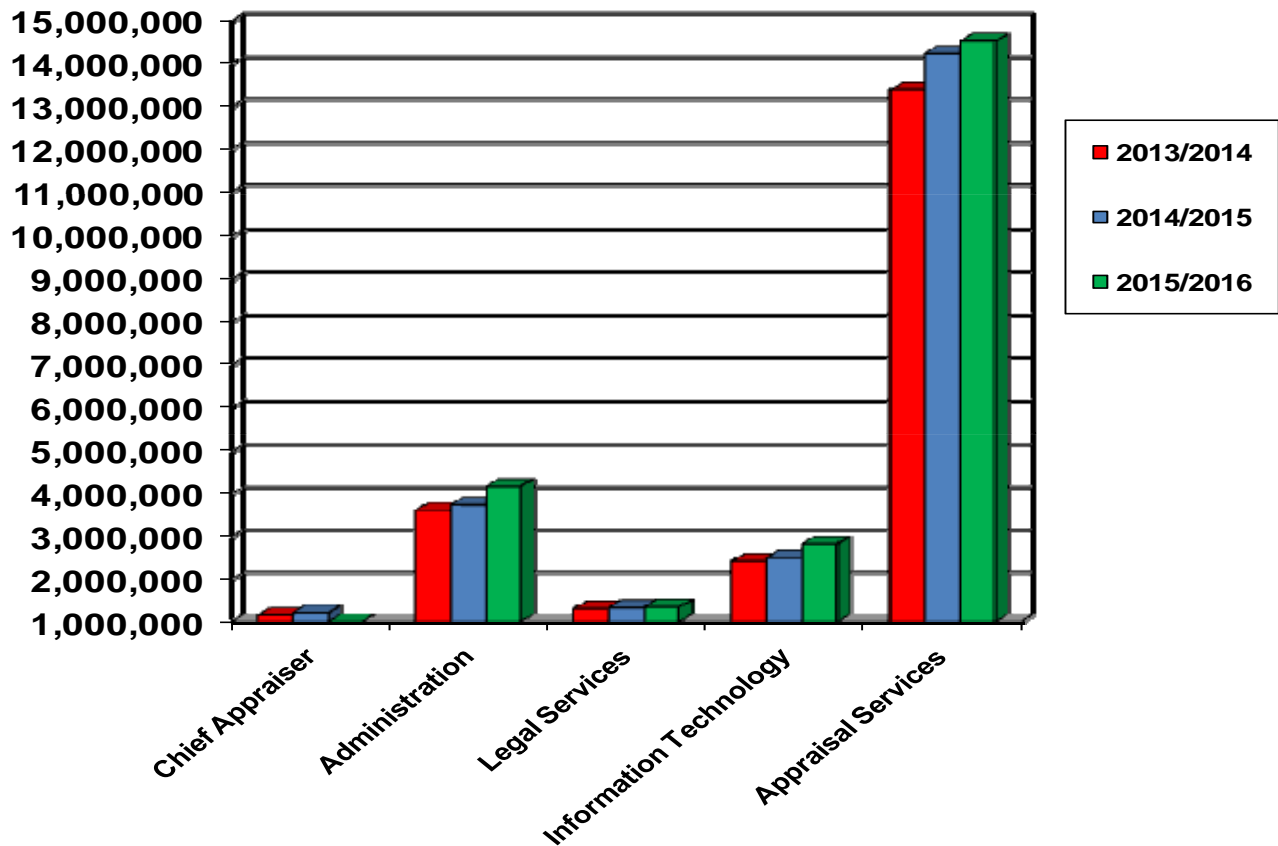


<u>Category</u>	<u>Budget Total</u>	<u>Percent</u>
1 Salaries & Wages	\$13,231,728	55.9%
2 Auto Expenses	767,540	3.2%
3 Supplies & Materials	697,577	2.9%
4 Operational Services	68,500	0.3%
5 Maintenance of Structure	363,333	1.5%
6 Maintenance of Equipment	270,482	1.1%
7 Contractual Services	579,498	2.4%
8 Sundry Expenses	324,056	1.4%
9 Insurance & Benefits	5,689,801	24.0%
10 Professional Services	1,570,855	6.6%
11 Capital Expenditures	113,970	0.5%
<b>Total</b>	<b>\$23,677,340</b>	<b>100%</b>

# Dallas Central Appraisal District

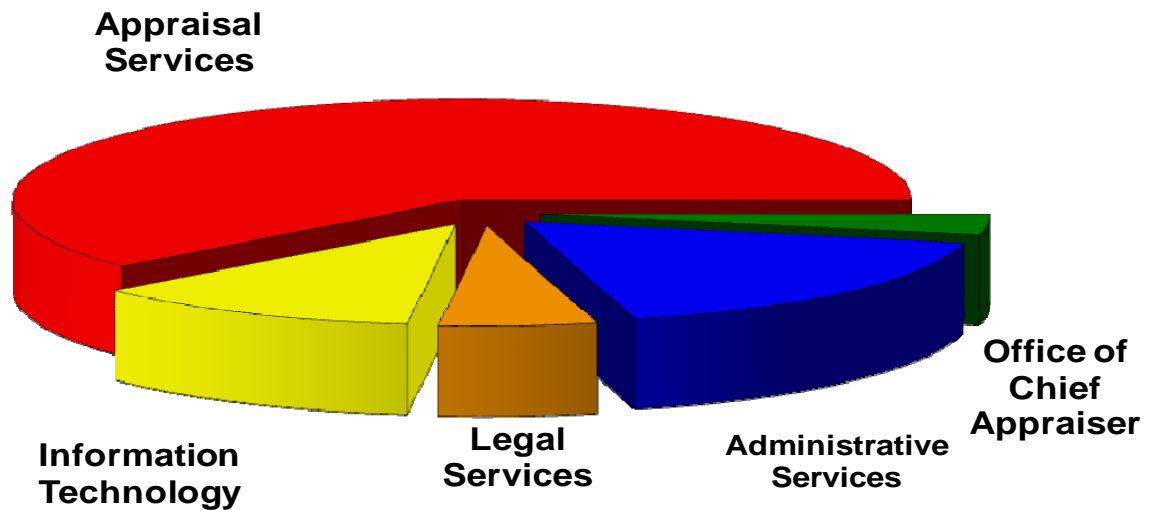
## Budget Comparison

<u>Category</u>	<u>2013/2014 Approved</u>	<u>2013/2014 Actual</u>	<u>2014/2015 Approved</u>	<u>2015/2016 Proposed</u>
Consolidated				
Office of Chief Appraiser	\$1,145,975	\$1,126,924	\$1,209,012	\$800,447
Consolidated				
Administrative Services	3,616,040	3,742,269	3,745,608	4,179,509
Consolidated				
Legal Services	1,304,260	1,378,224	1,327,816	1,343,065
Consolidated				
Information Technology	2,421,716	2,383,090	2,498,819	2,829,979
Consolidated				
Appraisal Services	13,384,986	13,207,959	14,228,577	14,524,340
Contingency	0	0	0	0
<b>Total</b>	<b><u>\$21,872,977</u></b>	<b><u>\$21,838,466</u></b>	<b><u>\$23,009,832</u></b>	<b><u>\$23,677,340</u></b>



# 2015/2016

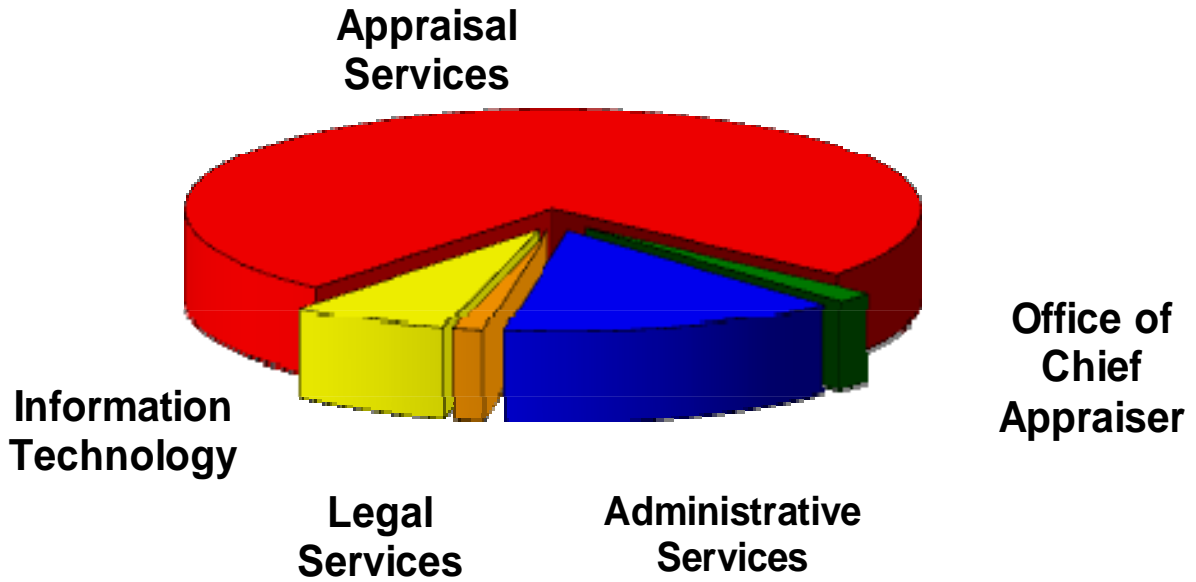
## Budget By Department



<u>Department</u>	<u>Budget Total</u>	<u>Percent</u>
Office of Chief Appraiser	\$ 800,447	3.3%
Administrative Services	4,179,509	17.7%
Legal Services	1,343,065	5.7%
Information Technology	2,829,979	12.0%
Appraisal Services	<u>14,524,340</u>	<u>61.3%</u>
<b>Total</b>	<b>\$23,677,340</b>	<b>100%</b>

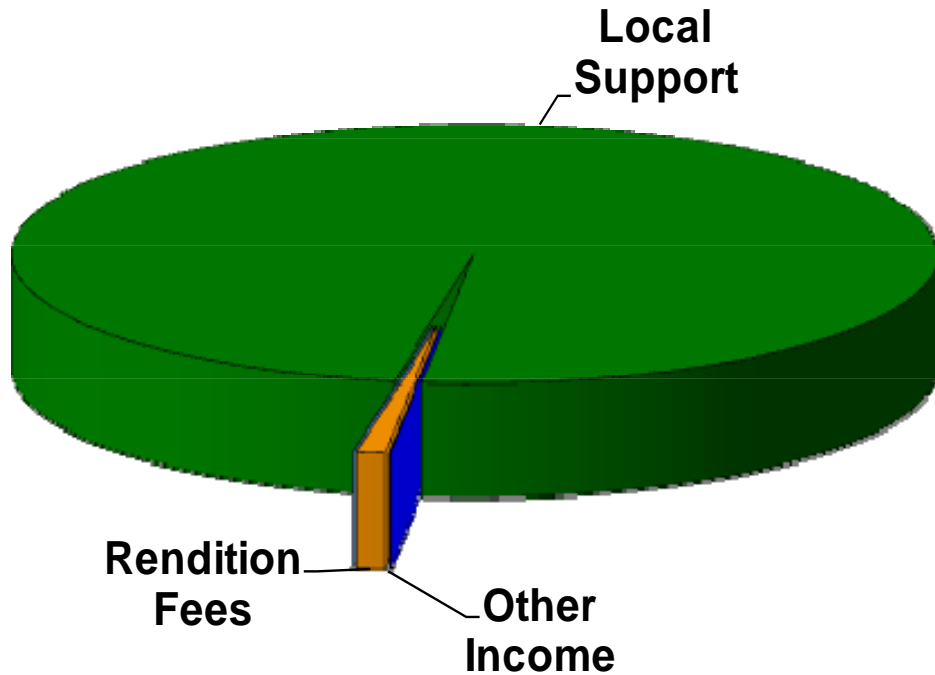
# 2015/2016

## Personnel Breakdown



<u>Department</u>	<u>Number of Personnel</u>	<u>Percent</u>
Office of Chief Appraiser	4	1.8%
Administrative Services	34	14.9%
Legal Services	3	1.3%
Information Technology	16	7.0%
Appraisal Services	<u>171</u>	<u>75.0%</u>
<b>Total</b>	<b>228</b>	<b>100%</b>

# 2015/2016 Operating Funds Sources



<u>Source</u>	<u>Amount</u>	<u>Percent</u>
Local Support	\$23,437,340	98.99%
Investment Proceeds	0	0.00%
Rendition Fees	230,000	0.97%
Other Income	10,000	0.04%
<b>Total</b>	<b>\$23,677,340</b>	<b>100.00%</b>

# Revenue Summary Budget Allocation Comparison

	<u>2014/2015 Approved Allocation</u>	%	<u>2015/2016 Proposed Allocation</u>	%
Local Support				
Municipalities	\$5,749,805	25.74%	\$5,995,341	25.58%
School Districts	\$9,143,416	40.93%	\$9,629,552	41.09%
County/County Wide Special Districts	\$7,136,996	31.95%	\$7,435,216	31.72%
Non-County Wide Special Districts	\$309,615	1.39%	\$377,231	1.61%
<b>TOTAL</b>	<b>\$22,339,832</b>	<b>100%</b>	<b>\$23,437,340</b>	<b>100%</b>



# 2015/2016

## PROPOSED BUDGET ALLOCATIONS

	<u>2014/2015 Approved Allocation</u>	<u>2015/2016 Proposed Allocation</u>	<u>Increase or (Decrease)</u>	<u>% Change</u>
<b>County/County-wide</b>				
<b>Special Districts:</b>				
Dallas County	2,853,175	2,915,655	62,480	2.19%
D.C.H.D.	3,243,041	3,434,050	191,009	5.89%
D.C.C.C.D.	1,040,780	1,085,511	44,731	4.30%
<b>Subtotal</b>	<b>7,136,996</b>	<b>7,435,216</b>	<b>298,220</b>	<b>4.18%</b>
<b>Non-County-Wide</b>				
<b>Special Districts:</b>				
Dallas URD	225,162	283,255	58,093	25.80%
Valwood Imp. Authority	21,946	21,571	(375)	-1.71%
Irving FCD 1	6,550	6,617	67	1.02%
Irving FCD 3	10,257	10,697	440	4.29%
Dallas FCD1	36,296	45,051	8,755	24.12%
Denton County LID #1	1,659	1,989	330	19.89%
Denton County RUD #1	0	0	0	0.00%
Lancaster MUD #1	1,414	1,504	90	6.36%
Grand Prairie Metro URD	545	549	4	0.73%
Northwest FCD	5,786	5,998	212	3.66%
<b>Subtotal</b>	<b>309,615</b>	<b>377,231</b>	<b>67,616</b>	<b>21.84%</b>

# PROPOSED BUDGET ALLOCATIONS

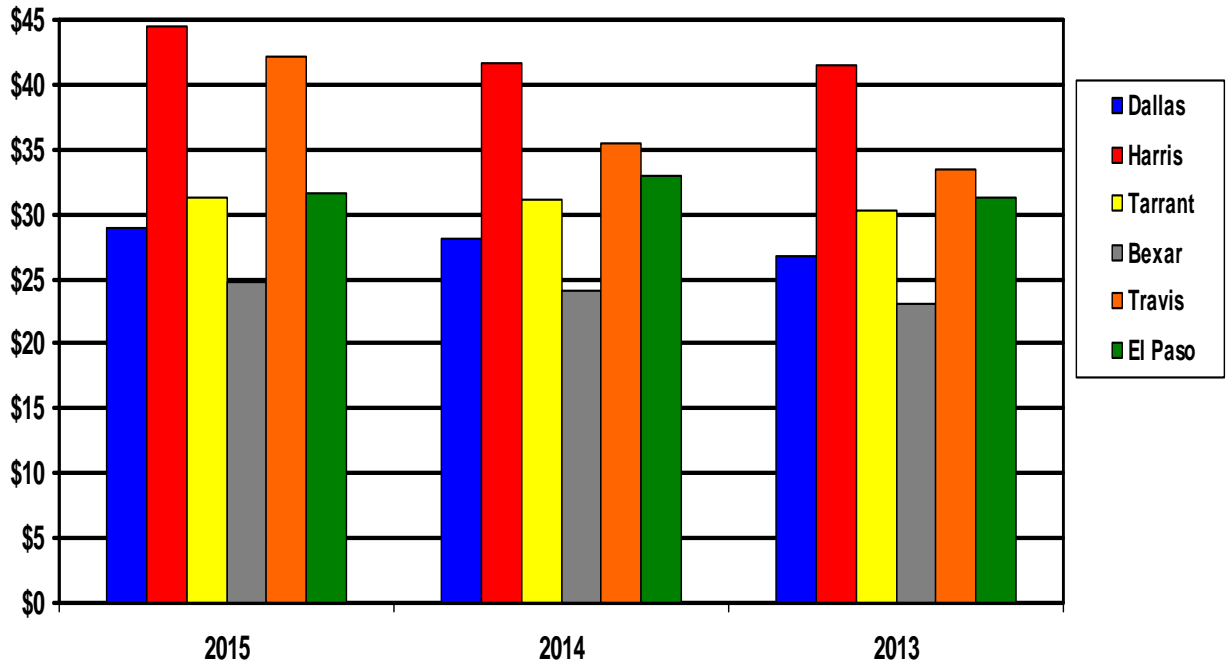
	<b>2014/2015</b>	<b>2015/2016</b>	<b>Increase or</b>	<b>% Change</b>
	<b><u>Approved</u></b>	<b><u>Proposed</u></b>	<b><u>(Decrease)</u></b>	
	<b><u>Allocation</u></b>	<b><u>Allocation</u></b>		
<b>Cities:</b>				
Addison	96,374	101,671	5,297	5.50%
Balch Springs	24,194	25,828	1,634	6.75%
Carrollton	145,834	149,366	3,532	2.42%
Cedar Hill	88,466	92,085	3,619	4.09%
Cockrell Hill	3,440	3,398	(42)	-1.22%
Combine	156	164	8	5.13%
Coppell	158,188	159,163	975	0.62%
Dallas	3,190,128	3,327,165	137,037	4.30%
DeSoto	105,556	108,585	3,029	2.87%
Duncanville	60,139	62,179	2,040	3.39%
Farmers Branch	105,288	120,726	15,438	14.66%
Ferris	402	375	(27)	-6.72%
Garland	345,642	351,044	5,402	1.56%
Glenn Heights	10,544	10,945	401	3.80%
Grand Prairie	151,174	158,507	7,333	4.85%
Grapevine	2,279	2,391	112	4.91%
Highland Park	48,813	51,445	2,632	5.39%
Hutchins	9,115	9,703	588	6.45%
Irving	521,881	544,660	22,779	4.36%
Lancaster	61,591	67,710	6,119	9.93%
Lewisville	1,452	1,805	353	24.31%
Mesquite	173,648	178,874	5,226	3.01%
Ovilla	737	727	(10)	-1.36%
Richardson	204,342	211,053	6,711	3.28%
Rowlett	95,279	103,781	8,502	8.92%
Sachse	30,539	32,578	2,039	6.68%
Seagoville	15,750	15,797	47	0.30%
Sunnyvale	15,839	16,148	309	1.95%
University Park	78,078	81,398	3,320	4.25%
Wilmer	4,580	5,695	1,115	24.34%
Wylie	357	375	18	5.04%
<b>Total</b>	<b>5,749,805</b>	<b>5,995,341</b>	<b>245,536</b>	<b>4.27%</b>

# PROPOSED BUDGET ALLOCATIONS

	<u>2014/2015 Approved Allocation</u>	<u>2015/2016 Proposed Allocation</u>	<u>Increase or (Decrease)</u>	<u>% Change</u>
<b>School Districts:</b>				
Carrollton/F.B.	639,140	668,558	29,418	4.60%
Cedar Hill	154,569	163,283	8,714	5.64%
Coppell	451,337	495,000	43,663	9.67%
Dallas	4,116,222	4,347,579	231,357	5.62%
Dallas County Schools	65,708	69,325	3,617	5.50%
DeSoto	124,068	128,761	4,693	3.78%
Duncanville	187,101	195,314	8,213	4.39%
Ferris	993	943	(50)	-5.04%
Garland	667,640	692,137	24,497	3.67%
Grand Prairie	283,919	303,220	19,301	6.80%
Grapevine/Colleyville	9,729	13,026	3,297	33.89%
Highland Park	525,574	560,385	34,811	6.62%
Irving	549,391	568,476	19,085	3.47%
Lancaster	83,369	89,837	6,468	7.76%
Mesquite	339,379	354,292	14,913	4.39%
Richardson	896,510	929,897	33,387	3.72%
Sunnyvale	48,767	49,519	752	1.54%
Wilmer/Hutchins	0	0	0	0.00%
<b>Total</b>	<b>9,143,416</b>	<b>9,629,552</b>	<b>486,136</b>	<b>5.32%</b>

# APPRAISAL DISTRICT COMPARISONS

	2015	Real	Personal	Total	Cost Per Parcel		
	<u>Budget Amount</u>	<u>Property</u>	<u>Property</u>	<u>Parcels</u>	<u>2015</u>	<u>2014</u>	<u>2013</u>
Dallas CAD	\$23,677,340	720,840	98,787	819,627	\$28.89	\$28.15	\$26.76
Harris CAD	\$76,577,504	1,405,043	314,044	1,719,087	\$44.55	\$41.72	\$41.48
Tarrant CAD	\$21,507,531	637,965	48,769	686,734	\$31.32	\$31.17	\$30.23
Bexar CAD	\$15,870,698	597,798	43,124	640,922	\$24.76	\$24.08	\$23.12
Travis CAD	\$17,149,799	369,943	37,547	407,490	\$42.09	\$35.44	\$33.53
El Paso CAD	\$12,662,248	379,945	21,140	401,085	\$31.57	\$32.93	\$31.20



# APPRAISAL DISTRICT EMPLOYEE COMPARISONS

<b>Appraisal District</b>	<b>2015 Budget</b>	<b>Total Parcels</b>	<b>Number of Employees</b>	<b>Parcels per Employee</b>	<b>Number of Appraisers</b>	<b>Parcels per Appraiser</b>
<b>Dallas Central Appraisal District</b>	<b>\$23,677,340</b>	<b>819,627</b>	<b>228</b>	<b>3,595</b>	<b>95</b>	<b>8,628</b>
<b>Harris Central Appraisal District</b>	<b>\$76,577,504</b>	<b>1,719,087</b>	<b>649</b>	<b>2,649</b>	<b>293</b>	<b>5,867</b>
<b>Tarrant Appraisal District</b>	<b>\$21,507,531</b>	<b>686,734</b>	<b>199</b>	<b>3,451</b>	<b>91</b>	<b>7,546</b>
<b>Bexar Appraisal District</b>	<b>\$15,870,698</b>	<b>640,922</b>	<b>153</b>	<b>4,189</b>	<b>72</b>	<b>8,902</b>
<b>Travis Central Appraisal District</b>	<b>\$17,149,799</b>	<b>407,490</b>	<b>132</b>	<b>3,087</b>	<b>62</b>	<b>6,572</b>
<b>El Paso Central Appraisal District</b>	<b>\$12,662,248</b>	<b>401,085</b>	<b>140</b>	<b>2,865</b>	<b>39</b>	<b>10,284</b>

## 2014-2015 BUDGET/LEVY COMPARISON

	2014	2015	
	Tax Levy	Budget Amount	Cost As % Of Levy
Dallas CAD	\$4,940,649,726	\$23,677,340	0.48
Harris CAD *	\$8,524,596,828	\$76,577,504	0.90
Tarrant CAD	\$3,609,900,717	\$21,507,531	0.60
Bexar CAD	\$2,879,754,296	\$15,870,698	0.55
Travis CAD	\$3,020,254,559	\$17,149,799	0.57
El Paso CAD	\$991,364,185	\$12,662,248	1.28
* 2013 Tax Levy			

---

## ACCURACY OF APPRAISALS

	Median Level of Appraisals	Coefficient of Dispersion
Dallas Central Appraisal District	1.00	9.98
Harris Central Appraisal District *	1.03	5.45
Tarrant Appraisal District*	1.10	5.35
Bexar Appraisal District	1.00	13.65
Travis Central Appraisal District	0.98	8.88
El Paso Central Appraisal District	0.99	9.47
*2013		

@

## 2014/2015 Dallas Central Appraisal District Entity Salary Survey

Entity	Contact Person	Title	Increase	
Town of Addison	Passion Hayes	Director of Human Resources	3.50%	
City of Balch Springs	Susan Cluse	City Manager/Chief Financial Officer	2.00%	
City of Carrollton	Courtney Jackson	Administrative Support Asst.	3.00%	
City of Cedar Hill	Angelica Morales	H. R. Generalist	3.00%	
City of Cockrell Hill	Bret Haney	Asst. City Administrator	0.00%	
City of Combine	Lisa McCoy	City Secretary		one employee received 4.35%
City of Coppell	Dustin Yater	Sr. H.R. Advisor	4.00%	
City of Dallas	Annabelle Eanes	Sr. H.R. Analyst	3.00%	
City of Desoto	Alicia Hills-Oyedele	Asst. Director of Human Resources	1.00%	
City of Duncanville	Jennifer Otey	Personnel Manager	3.00%	
City of Farmers Branch	Charles Cox	Director of Finance	3.00%	
City of Ferris	Monica Lemon	Asst. Finance Director		one employee received 11% increase ***
City of Garland	Daniel Bensinger	Sr. H.R. Analyst	3.00%	
City of Glenn Heights	Kacye Harvey	H.R. Administrator	2.00%	
City of Grand Prairie	Erinn Bryant	H.R. Assistant	3.00%	
City of Grapevine	Jennifer Martinez	Financial Analyst	3.00%	
Town of Highland Park	Steven Alexander	Chief Financial Officer	3.87%	
City of Hutchins	Patti Holloway	Director of Finance	3.00%	
City of Irving	Bret Starr	Budget Administrator	2.00%	effective the last quarter of the year
City of Lancaster	Amanda Pritchett	H.R. Assistant	5.00%	
City of Lewisville	Britni Brattlof	Human Resources Analyst	3.00%	
City of Mesquite	Kerry Graham	Sr. H.R. Generalist	2.00%	
City of Ovilla	Linda Harding	City Accountant	3.00%	
City of Richardson	Beth Barton	Compensation Specialist	5.00%	combination of merit/step increase
City of Rowlett	Brandi Bull	Human Resources Analyst	1.30%	
City of Sachse	Stacy Buckley	H.R. Manager	4.00%	
City of Seagoville	Cindy Brown	Director of Human Resources	4.00%	
Town of Sunnyvale	Leslie Malone	Town Secretary	1.80%	
City of University Park	Tom Tvardzik	Director of Finance	3.51%	
City of Wilmer	Shelia Martin	Interim City Secretary	3.00%	
City of Wylie**	Linda Bantz	Finance Director	9.65%	wage plan overhaul

**Average Cities**

**3.13%**

\*\*FY 2015 giving other portion of FY2014 raises related to wage plan overhaul. Based on a compensation study

\*\*\*Three other employees moved from part time to full time average increase 12.10%



**2014/2015 Dallas Central Appraisal District Entity Salary Survey**

<b>Entity</b>	<b>Contact Person</b>	<b>Title</b>	<b>Increase</b>	
Carrollton/Farmers Branch ISD	Gayle Thompson	Secretary to Superintendent	3.00%	
Cedar Hill ISD	Marcy Moran	Director of Business Services	0.00%	
Coppell ISD	Vicky Cason	Admin. Asst.	3.00%	
Dallas ISD	Bian Philip	Compensation Analyst	3.00%	
DeSoto ISD	Sue Land	Employment & Data Management Coord.	2.60%	
Duncanville ISD	Ronald Kuehler	Chief Financial Officer	4.00%	
Ferris ISD	Brenda Rodriguez	Business Manager	2.00%	
Garland ISD	Sarah Wawak	Secretary to Exec. Director of H.R.	3.00%	
Grand Prairie ISD	Nancy Bridges	Sr. Executive Director of H.R.	2.50%	
Grapevine/Colleyville ISD	DaiAnn Mooney	Chief Financial Officer	2.00%	
Highland Park ISD	Chris Israelson	Director of Personnel	2.00%	
Irving ISD	Mia Stroy	Dir. of Compensation, Benefits, & HR Systems	3.50%	Professionals (3%) - Paraprofessional (4%)
Lancaster ISD	Erma Perry	Chief Financial Officer	3.00%	
Mesquite ISD	Kathryn Bohling	Asst. Superintendent	2.00%	
Richardson ISD	Barbara Hargrove	Director of Salary Administration	3.00%	
Sunnyvale ISD	Margaret Davis	Business Manager	2.00%	

**Average School Districts 2.54%**

Dallas County	James Sparkman	H.R. Analyst IV	5.00%	projected, actual available 12/10/2014
DCCCD	John Robertson	Associate Vice Chancellor of Business	2.50%	projected

**Average Countywide 3.75%**

<b>Total Average Approved Increase for All Entities</b>	<b>3.14%</b>
---	--------------

2015/2016 Dallas Central Appraisal District Proposed Budget Allocation Analysis

ENTITY and ENTITY CODE	2013 Grand Total Taxable Value 9/2013	2014 Grand Total Taxable Value 9/2014	Taxable Value Change	Taxable Value Percent Change	2013 Tax Rates	2014 Tax Rates	Tax Rate Change	Tax Rate Percent Change	2013 Levy	2014 Levy	Levy Change	Levy Percent Change	2014/2015	2015/2016	Budget Allocation Change	Budget Allocation Percent Change
													Approved Budget Allocation	Proposed Budget Allocation		
<b>CITIES</b>																
Addison CA	\$3,490,355,617	\$3,805,022,489	\$314,666,872	9.02%	0.571800	0.561800	(0.010000)	(1.75%)	\$19,957,853	\$21,376,616	\$1,418,763	7.11%	\$96,374	\$101,671	5,297	5.50%
Balch Springs CB	650,571,666	676,190,629	25,618,963	3.94%	0.770000	0.803000	0.033000	4.29%	5,009,402	5,429,811	420,409	8.39%	24,194	25,828	1,634	6.75%
Carrollton - Dallas Co. CC	4,888,397,168	5,103,117,994	214,720,826	4.39%	0.617875	0.615375	(0.002500)	(0.40%)	30,204,184	31,403,312	1,199,128	3.97%	145,834	149,366	3,532	2.42%
Cedar Hill - Dallas Co. CH	2,621,973,307	2,770,774,939	148,801,632	5.68%	0.698760	0.698760	0.000000	0.00%	18,321,301	19,361,067	1,039,766	5.68%	88,466	92,085	3,619	4.09%
Cockrell Hill CL	87,909,776	88,014,361	104,585	0.12%	0.811905	0.811657	(0.000248)	(0.03%)	713,744	714,375	631	0.09%	3,440	3,398	(42)	(1.22%)
Combine OM	11,589,034	11,328,005	(261,029)	(2.25%)	0.270000	0.290000	0.020000	7.41%	31,290	32,851	1,561	4.99%	156	164	8	5.13%
Coppell - Dallas Co CO	5,138,837,097	5,517,581,180	378,744,083	7.37%	0.637500	0.606490	(0.031010)	(4.86%)	32,760,086	33,463,578	703,492	2.15%	158,188	159,163	975	0.62%
Dallas DA	82,896,070,607	87,764,858,603	4,868,787,996	5.87%	0.797000	0.797000	0.000000	0.00%	660,681,683	699,485,923	38,804,240	5.87%	3,190,128	3,327,165	137,037	4.30%
DeSoto CS	2,886,025,550	3,014,006,403	127,980,853	4.43%	0.757400	0.757400	0.000000	0.00%	21,858,758	22,828,084	969,327	4.43%	105,556	108,585	3,029	2.87%
Duncanville CV	1,642,075,787	1,723,704,507	81,628,720	4.97%	0.758447	0.758447	0.000000	0.00%	12,454,275	13,073,385	619,111	4.97%	60,139	62,179	2,040	3.39%
Farmers Branch CF	3,942,109,808	4,214,517,567	272,407,759	6.91%	0.553100	0.602267	0.049167	8.89%	21,803,809	25,362,649	3,578,839	16.41%	105,288	120,726	15,438	14.66%
Ferris FE	12,418,461	11,564,161	(854,300)	(6.88%)	0.687134	0.687134	0.000000	0.00%	85,331	79,461	(5,870)	(6.88%)	402	375	(27)	(6.72%)
Garland - Dallas Co CG	10,159,649,141	10,474,166,190	314,517,049	3.10%	0.704600	0.704600	0.000000	0.00%	71,584,888	73,800,975	2,216,087	3.10%	345,642	351,044	5,402	1.56%
Glenn Heights - Dallas Co CE	274,663,105	289,581,148	14,918,043	5.43%	0.795000	0.795000	0.000000	0.00%	2,183,572	2,302,170	118,598	5.43%	10,544	10,945	401	3.80%
Grand Prairie - Dallas Co CP	4,672,879,002	4,973,360,738	300,481,736	6.43%	0.669998	0.669998	0.000000	0.00%	31,308,196	33,321,417	2,013,222	6.43%	151,174	158,507	7,333	4.85%
Grapevine GV	137,323,415	150,770,605	13,447,190	9.79%	0.324500	0.332439	(0.010061)	(2.94%)	470,339	501,220	30,888	6.57%	2,279	2,391	112	4.91%
Highland Park TH	4,594,079,983	4,916,346,204	322,266,221	7.01%	0.220000	0.220000	0.000000	0.00%	10,106,976	10,815,962	708,986	7.01%	48,813	51,445	2,632	5.39%
Hutchins CU	273,264,544	286,688,781	13,424,237	4.91%	0.690907	0.710907	0.020000	2.89%	1,888,004	2,038,091	150,087	7.95%	9,115	9,703	588	6.45%
Irving CI	18,055,855,517	19,273,934,519	1,218,079,002	6.75%	0.598600	0.594100	(0.004500)	(0.75%)	108,082,351	114,506,445	6,424,094	5.94%	521,881	544,660	22,779	4.36%
Lancaster CN	1,470,183,673	1,640,933,624	170,749,951	11.61%	0.867500	0.867500	0.000000	0.00%	12,753,843	14,235,099	1,481,256	11.61%	61,591	67,710	6,119	9.93%
Lewisville LE	68,063,254	86,645,274	18,582,020	27.30%	0.440210	0.436086	(0.004124)	(0.94%)	299,621	377,848	78,227	26.11%	1,452	1,805	353	24.31%
Mesquite - Dallas Co CM	5,619,343,068	5,875,906,854	256,563,786	4.57%	0.640000	0.640000	0.000000	0.00%	35,963,796	37,605,804	1,642,008	4.57%	173,648	178,874	5,226	3.01%
Ovilla OV	22,515,567	22,807,418	291,851	1.30%	0.671900	0.671900	0.000000	0.00%	151,282	153,243	1,961	1.30%	737	727	(10)	(1.36%)
Richardson CR	6,662,810,168	6,985,774,087	322,963,919	4.85%	0.635160	0.635160	0.000000	0.00%	42,319,505	44,370,843	2,051,338	4.85%	204,342	211,053	6,711	3.28%
Rowlett - Dallas Co CW	2,640,850,402	2,771,979,368	131,128,966	4.97%	0.747173	0.787173	0.040000	5.35%	19,731,721	21,820,273	2,088,552	10.58%	95,279	103,781	8,502	8.92%
Sachse CK	820,519,950	888,393,088	67,873,138	8.27%	0.770819	0.770819	0.000000	0.00%	6,324,724	6,847,903	523,179	8.27%	30,539	32,578	2,039	6.68%
Seagoville - Dallas Co CJ	456,887,839	465,208,333	8,320,494	1.82%	0.713794	0.713800	0.000006	0.00%	3,261,238	3,320,657	59,419	1.82%	15,750	15,797	47	0.30%
Sunnyvale TS	804,115,737	831,840,142	27,724,405	3.45%	0.407962	0.407962	0.000000	0.00%	3,280,487	3,393,592	113,105	3.45%	15,839	16,148	309	1.95%
University Park CQ	5,894,852,538	6,342,348,768	447,496,230	7.59%	0.274320	0.269790	(0.004530)	(1.65%)	16,170,759	17,111,023	940,263	5.81%	78,078	81,398	3,320	4.25%
Wilmer CT	244,053,999	274,386,705	30,332,706	12.43%	0.389438	0.436600	0.047162	12.11%	950,439	1,197,972	247,533	26.04%	4,580	5,695	1,115	24.34%
Wylie WY	8,521,284	9,106,928	585,644	6.87%	0.883900	0.878900	(0.005000)	(0.57%)	75,320	80,041	4,721	6.27%	357	375	18	5.04%
<b>COUNTYWIDE ENTITIES</b>																
Dallas County DC	165,164,823,816	175,109,899,401	9,945,075,585	6.02%	0.243100	0.243100	0.000000	0.00%	401,515,687	425,692,165	24,176,479	6.02%	2,853,175	2,915,655	62,480	2.19%
Dallas Co Community College DO	172,852,243,507	182,898,622,497	10,046,378,990	5.81%	0.124700	0.124775	0.000075	0.06%	215,546,748	228,211,756	12,665,009	5.88%	1,040,780	1,085,511	44,731	4.30%
Parkland Hospital PH	165,355,034,790	175,307,356,424	9,952,321,634	6.02%	0.276000	0.286000	0.010000	3.62%	456,379,896	501,379,039	44,999,143	9.86%	3,243,041	3,434,050	191,009	5.89%
<b>SCHOOL DISTRICTS</b>																
Carrollton/Farmers Branch ISD AS	12,138,397,348	12,957,106,686	818,709,338	6.74%	1.323500	1.303300	(0.020200)	(1.53%)	160,651,689	168,869,971	8,218,283	5.12%	639,140	668,558	29,418	4.60%
Cedar Hill ISD ES	2,547,666,194	2,704,479,453	156,813,259	6.16%	1.525000	1.525000	0.000000	0.00%	38,851,909	41,243,312	2,391,402	6.16%	154,569	163,283	8,714	5.64%
Coppell ISD OS	7,920,021,426	8,628,799,093	708,777,667	8.95%	1.432400	1.449000	0.016600	1.16%	113,446,387	125,031,299	11,584,912	10.21%	451,337	495,000	43,663	9.67%
Dallas ISD DS	80,699,597,540	85,653,285,958	4,953,688,418	6.14%	1.282085	1.282085	0.000000	0.00%	1,034,637,435	1,098,147,931	63,510,496	6.14%	4,116,222	4,347,579	231,357	5.62%
DeSoto ISD SS	2,092,966,735	2,212,491,929	119,525,194	5.71%	1.490000	1.470000	(0.020000)	(1.34%)	31,185,204	32,523,631	1,338,427	4.29%	124,068	128,761	4,693	3.78%
Duncanville ISD US	3,335,394,098	3,498,876,512	163,482,414	4.90%	1.410000	1.410000	0.000000	0.00%	47,029,057	49,334,159	2,305,102	4.90%	187,101	195,314	8,213	4.39%
Ferris ISD FS	19,061,981	17,984,526	(1,077,455)	(5.65%)	1.310000	1.325000	0.015000	1.15%	249,712	238,295	(11,417)	(4.57%)	993	943	(50)	(5.04%)
Garland ISD GS	13,389,896,468	13,949,236,445	559,339,977	4.18%	1.253300	1.253300	0.000000	0.00%	167,815,572	174,825,780	7,010,208	4.18%	667,640	692,137	24,497	3.67%
Grand Prairie ISD PS	4,871,313,438	5,227,985,851	356,672,413	7.32%	1.465000	1.465000	0.000000	0.00%	71,364,742	76,589,993	5,225,251	7.32%	283,919	303,220	19,301	6.80%
Grapevine-Colleyville ISD VS	185,237,898	249,241,727	64,003,829	34.55%	1.320100	1.320100	0.000000	0.00%	2,445,325	3,290,240	844,915	34.55%	9,729	13,026	3,297	33.89%
Highland Park ISD HS	11,725,071,940	12,659,588,465	934,516,525	7.97%	1.126700	1.118100	(0.008600)	(0.76%)	132,106,386	141,546,859	9,440,473	7.15%	525,574	560,385	34,811	6.62%
Irving ISD IS	9,426,128,696	10,006,303,233	580,174,537	6.15%	1.465000	1.435000	(0.030000)	(2.05%)	138,092,785	143,590,451	5,497,666	3.98%	549,391	568,476	19,085	3.47%
Lancaster ISD LS	1,477,801,521	1,656,192,436	178,390,915	12.07%	1.418000	1.370120	(0.047880)	(3.38%)	20,955,226	22,691,824	1,736,598	8.29%	83,369	89,837	6,468	7.76%
Mesquite ISD MS	6,050,008,560	6,346,813,898	296,805,338	4.91%	1.410000	1.410000	0.000000	0.00%	85,305,121	89,490,076	4,184,955	4.91%	339,379	354,292	14,913	4.39%
Richardson ISD RS	16,816,036,626	17,527,808,479	711,771,853	4.23%	1.340050	1.340050	0.000000	0.00%	225,343,299	234,881,398	9,538,099	4.23%	896,510	929,897	33,387	3.72%
Sunnyvale ISD YS	869,360,937	887,094,067	17,733,130	2.04%	1.410000	1.410000	0.000000	0.00%	12,257,989	12,508,026	250,037	2.04%	48,767	49,519	752	1.54%
Dallas County Schools	165,164,823,816	175,109,899,401	9,945,075,585	6.02%	0.010000	0.010000	0.000000	0.00%	16,516,482	17,510,990	994,508	6.02%	65,708	69,325		

2015/2016 Dallas Central Appraisal District Proposed Budget Allocation Analysis

ENTITY and ENTITY CODE		2013 Grand Total	2014 Grand Total	Taxable Value	Taxable Value	Taxable Value	Percent Change	2013 Tax Rates	2014 Tax Rates	Tax Rate Change	Tax Rate Percent Change	2013 Levy	2014 Levy	Levy Change	Levy Percent Change	2014/2015	2015/2016	Budget Allocation Change	Budget Allocation Percent Change
		Taxable Value 9/2013	Taxable Value 9/2014													Change	Approved Budget Allocation		
<b>SPECIAL DISTRICTS</b>																			
Dallas County FCD #1	DD	273,346,590	344,410,803	71,064,213	26.00%	2.750000	2.750000	0.000000	0.00%	7,517,031	9,471,297	1,954,266	26.00%	36,296	45,051	8,755	24.12%		
Dallas County URD	DM	2,603,645,344	3,003,024,932	399,379,588	15.34%	1.791000	1.983000	0.192000	10.72%	46,631,288	59,549,984	12,918,696	27.70%	225,162	283,255	58,093	25.80%		
Denton Co. LID #1	NL	185,744,358	225,981,382	40,237,024	21.66%	0.185000	0.185000	0.000000	0.00%	343,627	418,066	74,438	21.66%	1,659	1,989	330	19.89%		
Denton Co. RUD #1	NR	156,805,121	193,950,954	37,145,833	23.69%	0.000000	0.000000	0.000000	#DIV/0!	0	0	0	#DIV/0!	0	0	0	#DIV/0!		
Grand Prairie Metro URD	GU	18,815,591	19,245,702	430,111	2.29%	0.600000	0.600000	0.000000	0.00%	112,894	115,474	2,581	2.29%	545	549	4	0.73%		
Irving FCD, Section I	IF	271,297,891	275,619,475	4,321,584	1.59%	0.500000	0.504700	0.004700	0.94%	1,356,489	1,391,051	34,562	2.55%	6,550	6,617	67	1.02%		
Irving FCD, Section III	ID	1,494,958,655	1,560,677,008	65,718,353	4.40%	0.142100	0.144100	0.002000	1.41%	2,124,336	2,248,936	124,599	5.87%	10,257	10,697	440	4.29%		
Lancaster MUD #1	LM	27,629,454	29,837,440	2,207,986	7.99%	1.060000	1.060000	0.000000	0.00%	292,872	316,277	23,405	7.99%	1,414	1,504	90	6.36%		
Northwest Dallas Co FCD	NF	399,399,238	420,351,881	20,952,643	5.25%	0.300000	0.300000	0.000000	0.00%	1,198,198	1,261,056	62,858	5.25%	5,786	5,998	212	3.66%		
Valwood Improvement Auth.	FF	1,567,273,984	1,679,656,327	112,382,343	7.17%	0.290000	0.270000	(0.020000)	(6.90%)	4,545,095	4,535,072	(10,022)	(0.22%)	21,946	21,571	(375)	(1.71%)		

DALLAS CENTRAL APPRAISAL DISTRICT 2015 PRELIMINARY ESTIMATED REAPPRAISAL PLAN - As of February 12, 2015

ENTITY	RESIDENTIAL			COMMERCIAL			BPP			TOTAL OF ALL DIVISIONS		
	ACCOUNTS REAPPRAISED	TOTAL NUMBER OF ACCOUNTS	PERCENT REAPPRAISED	ACCOUNTS REAPPRAISED	TOTAL NUMBER OF ACCOUNTS	PERCENT REAPPRAISED	ACCOUNTS REAPPRAISED	TOTAL NUMBER OF ACCOUNTS	PERCENT REAPPRAISED	ACCOUNTS REAPPRAISED	TOTAL NUMBER OF ACCOUNTS	PERCENT REAPPRAISED
<b>CITIES</b>												
Addison	1,619	2,358	68.66%	365	686	53.21%	3,000	3,000	100.00%	4,984	6,044	82.46%
Balch Springs	2,740	6,761	40.53%	333	968	34.40%	772	772	100.00%	3,845	8,501	45.23%
Carrollton	8,848	12,309	71.88%	943	1,777	53.07%	3,578	3,578	100.00%	13,369	17,664	75.69%
Cedar Hill	9,207	16,214	56.78%	359	1,201	29.89%	1,247	1,247	100.00%	10,813	18,662	57.94%
Cockrell Hill	159	929	17.12%	103	103	100.00%	167	167	100.00%	429	1,199	35.78%
Combine	202	327	61.77%	70	75	93.33%	16	16	100.00%	288	418	68.90%
Coppell	8,725	12,119	71.99%	482	1,062	45.39%	1,513	1,513	100.00%	10,720	14,694	72.95%
Dallas	150,024	291,228	51.51%	20,083	39,160	51.28%	47,804	47,804	100.00%	217,911	378,192	57.62%
Desoto	8,612	16,659	51.70%	309	1,287	24.01%	1,261	1,261	100.00%	10,182	19,207	53.01%
Duncanville	6,243	11,960	52.20%	264	1,044	25.29%	1,402	1,402	100.00%	7,909	14,406	54.90%
Farmers Branch	4,880	8,079	60.40%	572	1,235	46.32%	3,120	3,120	100.00%	8,572	12,434	68.94%
Ferris	0	0	0.00%	4	15	26.67%	8	8	100.00%	12	23	52.17%
Garland	47,723	64,399	74.11%	1,627	4,691	34.68%	5,687	5,687	100.00%	55,037	74,777	73.60%
Glenn Heights	1,938	3,325	58.29%	198	198	100.00%	90	90	100.00%	2,226	3,613	61.61%
Grand Prairie	14,179	35,835	39.57%	1,248	4,270	29.23%	2,899	2,899	100.00%	18,326	43,004	42.61%
Grapevine	0	0	0.00%	28	28	100.00%	74	74	100.00%	102	102	100.00%
Highland Park	2,446	3,403	71.88%	37	80	46.25%	372	372	100.00%	2,855	3,855	74.06%
Hutchins	276	1,378	20.03%	66	397	16.62%	282	282	100.00%	624	2,057	30.34%
Irving	27,542	43,597	63.17%	2,679	5,529	48.45%	8,070	8,070	100.00%	38,291	57,196	66.95%
Lancaster	8,873	12,720	69.76%	863	1,579	54.65%	821	821	100.00%	10,557	15,120	69.82%
Lewisville	186	300	62.00%	4	10	40.00%	16	16	100.00%	206	326	63.19%
Mesquite	18,570	38,179	48.64%	1,204	2,628	45.81%	3,139	3,139	100.00%	22,913	43,946	52.14%
Ovilla	0	162	0.00%	23	23	100.00%	6	6	100.00%	29	191	15.18%
Richardson	16,419	21,561	76.15%	764	1,601	47.72%	4,519	4,519	100.00%	21,702	27,681	78.40%
Rowlett	13,297	17,540	75.81%	853	1,019	83.71%	963	963	100.00%	15,113	19,522	77.42%
Sachse	4,166	5,300	78.60%	317	317	100.00%	268	268	100.00%	4,751	5,885	80.73%
Seagoville	1,161	4,890	23.74%	71	775	9.16%	450	450	100.00%	1,682	6,115	27.51%
Sunnyvale	382	2,286	16.71%	206	625	32.96%	438	438	100.00%	1,026	3,349	30.64%
University Park	5,482	6,914	79.29%	219	316	69.30%	792	792	100.00%	6,493	8,022	80.94%
Wilmer	263	1,541	17.07%	156	240	65.00%	150	150	100.00%	569	1,931	29.47%
Wylie	93	301	30.90%	14	14	100.00%	12	12	100.00%	119	327	36.39%
<b>Total Cities</b>	<b>364,255</b>	<b>642,574</b>	<b>56.69%</b>	<b>34,464</b>	<b>72,953</b>	<b>47.24%</b>	<b>92,936</b>	<b>92,936</b>	<b>100.00%</b>	<b>491,655</b>	<b>808,463</b>	<b>60.81%</b>
<b>SCHOOLS</b>												
Carrollton/Farmers Branch	16,622	23,332	71.24%	1,316	3,483	37.78%	5,954	5,954	100.00%	23,892	32,769	72.91%
Cedar Hill	10,030	16,878	59.43%	376	1,274	29.51%	1,232	1,232	100.00%	11,638	19,384	60.04%
Coppell	9,740	14,675	66.37%	663	1,462	45.35%	2,249	2,249	100.00%	12,652	18,386	68.81%
Dallas	130,195	268,589	48.47%	20,593	39,851	51.67%	47,600	47,600	100.00%	198,388	356,040	55.72%
Desoto	10,090	18,775	53.74%	523	1,125	46.49%	930	930	100.00%	11,543	20,830	55.42%
Duncanville	10,801	20,531	52.61%	596	2,141	27.84%	1,954	1,954	100.00%	13,351	24,626	54.22%
Ferris	0	115	0.00%	52	97	53.61%	16	16	100.00%	68	228	29.82%
Garland	61,465	83,016	74.04%	2,949	6,122	48.17%	6,535	6,535	100.00%	70,949	95,673	74.16%
Grand Prairie	13,428	34,444	38.99%	1,275	4,195	30.39%	2,947	2,947	100.00%	17,650	41,586	42.44%
Grapevine-Colleyville	0	0	0.00%	0	18	0.00%	165	165	100.00%	165	183	90.16%
Highland Park	8,220	10,730	76.61%	344	480	71.67%	1,916	1,916	100.00%	10,480	13,126	79.84%
Irving	21,582	36,071	59.83%	2,323	4,960	46.83%	5,771	5,771	100.00%	29,676	46,802	63.41%
Lancaster	8,938	13,072	68.38%	825	1,751	47.12%	812	812	100.00%	10,575	15,635	67.64%
Mesquite	21,521	46,827	45.96%	1,517	3,281	46.24%	3,504	3,504	100.00%	26,542	53,612	49.51%
Richardson	41,740	59,988	69.58%	1,503	3,386	44.39%	9,497	9,497	100.00%	52,740	72,871	72.37%
Sunnyvale	382	2,286	16.71%	206	638	32.29%	438	438	100.00%	1,026	3,362	30.52%
<b>Total Schools</b>	<b>364,754</b>	<b>649,329</b>	<b>56.17%</b>	<b>35,061</b>	<b>74,264</b>	<b>47.21%</b>	<b>91,520</b>	<b>91,520</b>	<b>100.00%</b>	<b>491,335</b>	<b>815,113</b>	<b>60.28%</b>

DALLAS CENTRAL APPRAISAL DISTRICT 2014 PRELIMINARY ESTIMATED REAPPRAISAL PLAN - As of February 2014

ENTITY	RESIDENTIAL			COMMERCIAL			BPP			TOTAL OF ALL DIVISIONS		
	ACCOUNTS REAPPRAISED	TOTAL NUMBER OF ACCOUNTS	PERCENT REAPPRAISED	ACCOUNTS REAPPRAISED	TOTAL NUMBER OF ACCOUNTS	PERCENT REAPPRAISED	ACCOUNTS REAPPRAISED	TOTAL NUMBER OF ACCOUNTS	PERCENT REAPPRAISED	ACCOUNTS REAPPRAISED	TOTAL NUMBER OF ACCOUNTS	PERCENT REAPPRAISED
<b>CITIES</b>												
Addison	1,387	2,349	59.05%	688	689	99.85%	2,970	2,970	100.00%	5,045	6,008	83.97%
Balch Springs	2,700	6,764	39.92%	626	952	65.76%	736	736	100.00%	4,062	8,452	48.06%
Carrollton	7,532	12,259	61.44%	1,398	1,781	78.50%	3,511	3,511	100.00%	12,441	17,551	70.88%
Cedar Hill	9,279	16,207	57.25%	677	1,205	56.18%	1,225	1,225	100.00%	11,181	18,637	59.99%
Cockrell Hill	930	930	100.00%	0	103	0.00%	166	166	100.00%	1,096	1,199	91.41%
Combine	203	326	62.27%	75	75	100.00%	15	15	100.00%	293	416	70.43%
Coppell	7,491	11,752	63.74%	669	971	68.90%	1,489	1,489	100.00%	9,649	14,212	67.89%
Dallas	148,274	291,459	50.87%	19,112	39,083	48.90%	47,593	47,593	100.00%	214,979	378,135	56.85%
Desoto	8,705	16,631	52.34%	589	1,284	45.87%	1,282	1,282	100.00%	10,576	19,197	55.09%
Duncanville	7,609	11,962	63.61%	804	1,114	72.17%	1,391	1,391	100.00%	9,804	14,467	67.77%
Farmers Branch	5,684	8,081	70.34%	592	1,235	47.94%	3,033	3,033	100.00%	9,309	12,349	75.38%
Ferris	0	0	0.00%	15	15	100.00%	6	6	100.00%	21	21	100.00%
Garland	30,254	64,402	46.98%	2,651	4,688	56.55%	5,664	5,664	100.00%	38,569	74,754	51.59%
Glenn Heights	1,759	3,160	55.66%	0	198	0.00%	80	80	100.00%	1,839	3,438	53.49%
Grand Prairie	13,932	35,825	38.89%	942	4,272	22.05%	2,780	2,780	100.00%	17,654	42,877	41.17%
Grapevine	0	0	0.00%	28	28	100.00%	81	81	100.00%	109	109	100.00%
Highland Park	2,639	3,400	77.62%	72	80	90.00%	343	343	100.00%	3,054	3,823	79.88%
Hutchins	28	1,332	2.10%	68	392	17.35%	276	276	100.00%	372	2,000	18.60%
Irving	21,903	43,498	50.35%	2,230	5,541	40.25%	8,022	8,022	100.00%	32,155	57,061	56.35%
Lancaster	5,522	12,729	43.38%	563	1,568	35.91%	808	808	100.00%	6,893	15,105	45.63%
Lewisville	85	299	28.43%	10	10	100.00%	15	15	100.00%	110	324	33.95%
Mesquite	17,422	38,182	45.63%	756	2,618	28.88%	3,119	3,119	100.00%	21,297	43,919	48.49%
Ovilla	79	162	48.77%	0	23	0.00%	5	5	100.00%	84	190	44.21%
Richardson	12,535	21,496	58.31%	1,074	1,617	66.42%	4,474	4,474	100.00%	18,083	27,587	65.55%
Rowlett	6,652	17,367	38.30%	477	1,025	46.54%	940	940	100.00%	8,069	19,332	41.74%
Sachse	2,464	5,277	46.69%	47	315	14.92%	265	265	100.00%	2,776	5,857	47.40%
Seagoville	2,365	4,901	48.26%	789	790	99.87%	440	440	100.00%	3,594	6,131	58.62%
Sunnyvale	1,459	2,209	66.05%	239	623	38.36%	426	426	100.00%	2,124	3,258	65.19%
University Park	6,386	6,927	92.19%	216	318	67.92%	774	774	100.00%	7,376	8,019	91.98%
Wilmer	752	1,495	50.30%	233	234	99.57%	141	141	100.00%	1,126	1,870	60.21%
Wylie	181	197	91.88%	1	16	6.25%	12	12	100.00%	194	225	86.22%
<b>Total Cities</b>	<b>326,211</b>	<b>641,578</b>	<b>50.85%</b>	<b>35,641</b>	<b>72,863</b>	<b>48.92%</b>	<b>92,082</b>	<b>92,082</b>	<b>100.00%</b>	<b>453,934</b>	<b>806,523</b>	<b>56.28%</b>
<b>SCHOOLS</b>												
Carrollton/Farmers Branch	15,680	23,255	67.43%	2,174	3,493	62.24%	5,834	5,834	100.00%	23,688	32,582	72.70%
Cedar Hill	9,799	16,872	58.08%	679	1,276	53.21%	1,201	1,201	100.00%	11,679	19,349	60.36%
Coppell	9,831	14,252	68.98%	867	1,358	63.84%	2,250	2,250	100.00%	12,948	17,860	72.50%
Dallas	131,446	268,742	48.91%	20,426	39,811	51.31%	47,370	47,370	100.00%	199,242	355,923	55.98%
Desoto	8,872	18,577	47.76%	362	1,122	32.26%	932	932	100.00%	10,166	20,631	49.28%
Duncanville	13,439	20,527	65.47%	980	2,208	44.38%	1,913	1,913	100.00%	16,332	24,648	66.26%
Ferris	114	114	100.00%	96	97	98.97%	15	15	100.00%	225	226	99.56%
Garland	37,452	82,717	45.28%	3,072	6,124	50.16%	6,474	6,474	100.00%	46,998	95,315	49.31%
Grand Prairie	13,199	34,431	38.33%	852	4,196	20.31%	2,831	2,831	100.00%	16,882	41,458	40.72%
Grapevine-Colleyville	0	0	0.00%	2	18	11.11%	144	144	100.00%	146	162	90.12%
Highland Park	8,961	10,740	83.44%	339	482	70.33%	1,884	1,884	100.00%	11,184	13,106	85.33%
Irving	15,350	36,109	42.51%	2,450	4,972	49.28%	5,704	5,704	100.00%	23,504	46,785	50.24%
Lancaster	6,032	13,079	46.12%	709	1,740	40.75%	802	802	100.00%	7,543	15,621	48.29%
Mesquite	19,852	46,788	42.43%	1,091	3,258	33.49%	3,456	3,456	100.00%	24,399	53,502	45.60%
Richardson	35,650	56,878	62.68%	2,296	3,394	67.65%	9,426	9,426	100.00%	47,372	69,698	67.97%
Sunnyvale	1,459	2,209	66.05%	251	636	39.47%	426	426	100.00%	2,136	3,271	65.30%
<b>Total Schools</b>	<b>327,136</b>	<b>645,290</b>	<b>50.70%</b>	<b>36,646</b>	<b>74,185</b>	<b>49.40%</b>	<b>90,662</b>	<b>90,662</b>	<b>100.00%</b>	<b>454,444</b>	<b>810,137</b>	<b>56.09%</b>

DALLAS CENTRAL APPRAISAL DISTRICT 2013 ESTIMATED REAPPRAISAL PLAN

ENTITY	RESIDENTIAL			COMMERCIAL			BPP			TOTAL OF ALL DIVISIONS		
	ACCOUNTS REAPPRAISED	TOTAL NUMBER OF ACCOUNTS	PERCENT REAPPRAISED	ACCOUNTS REAPPRAISED	TOTAL NUMBER OF ACCOUNTS	PERCENT REAPPRAISED	ACCOUNTS REAPPRAISED	TOTAL NUMBER OF ACCOUNTS	PERCENT REAPPRAISED	ACCOUNTS REAPPRAISED	TOTAL NUMBER OF ACCOUNTS	PERCENT REAPPRAISED
<b>CITIES</b>												
Addison	1,040	2,351	44.24%	364	687	52.98%	3,040	3,040	100.00%	4,444	6,078	73.12%
Balch Springs	2,274	6,764	33.62%	0	946	0.00%	736	736	100.00%	3,010	8,446	35.64%
Carrollton	4,850	12,259	39.56%	943	1,771	53.25%	3,495	3,495	100.00%	9,288	17,525	53.00%
Cedar Hill	5,500	16,172	34.01%	363	1,202	30.20%	1,173	1,173	100.00%	7,036	18,547	37.94%
Cockrell Hill	0	930	0.00%	107	108	99.07%	161	161	100.00%	268	1,199	22.35%
Combine	5	326	1.53%	75	75	100.00%	17	17	100.00%	97	418	23.21%
Coppell	5,410	11,727	46.13%	443	984	45.02%	1,472	1,472	100.00%	7,325	14,183	51.65%
Dallas	102,083	291,391	35.03%	17,368	39,103	44.42%	46,848	46,848	100.00%	166,299	377,342	44.07%
Desoto	6,087	16,632	36.60%	697	1,286	54.20%	1,270	1,270	100.00%	8,054	19,188	41.97%
Duncanville	4,411	11,964	36.87%	352	1,115	31.57%	1,325	1,325	100.00%	6,088	14,404	42.27%
Farmers Branch	3,392	8,082	41.97%	872	1,245	70.04%	3,110	3,110	100.00%	7,374	12,437	59.29%
Ferris	0	0	0.00%	13	13	100.00%	5	5	100.00%	18	18	100.00%
Garland	24,556	64,243	38.22%	2,710	4,682	57.88%	5,603	5,603	100.00%	32,869	74,528	44.10%
Glenn Heights	1,507	3,181	47.38%	0	199	0.00%	74	74	100.00%	1,581	3,454	45.77%
Grand Prairie	13,526	35,781	37.80%	1,824	4,254	42.88%	2,741	2,741	100.00%	18,091	42,776	42.29%
Grapevine	0	0	0.00%	29	29	100.00%	76	76	100.00%	105	105	100.00%
Highland Park	1,793	3,396	52.80%	34	83	40.96%	366	366	100.00%	2,193	3,845	57.04%
Hutchins	119	1,298	9.17%	384	390	98.46%	299	299	100.00%	802	1,987	40.36%
Irving	13,763	42,991	32.01%	2,311	5,521	41.86%	7,949	7,949	100.00%	24,023	56,461	42.55%
Lancaster	4,886	12,736	38.36%	616	1,562	39.44%	821	821	100.00%	6,323	15,119	41.82%
Lewisville	0	293	0.00%	10	10	100.00%	14	14	100.00%	24	317	7.57%
Mesquite	11,880	38,184	31.11%	991	2,608	38.00%	3,096	3,096	100.00%	15,967	43,888	36.38%
Ovilla	0	162	0.00%	0	23	0.00%	5	5	100.00%	5	190	2.63%
Richardson	13,443	21,464	62.63%	870	1,626	53.51%	4,426	4,426	100.00%	18,739	27,516	68.10%
Rowlett	6,347	17,257	36.78%	447	1,027	43.52%	911	911	100.00%	7,705	19,195	40.14%
Sachse	1,971	5,220	37.76%	48	321	14.95%	255	255	100.00%	2,274	5,796	39.23%
Seagoville	2,177	4,891	44.51%	66	784	8.42%	441	441	100.00%	2,684	6,116	43.88%
Sunnyvale	505	2,205	22.90%	193	613	31.48%	403	403	100.00%	1,101	3,221	34.18%
University Park	4,957	6,904	71.80%	251	321	78.19%	761	761	100.00%	5,969	7,986	74.74%
Wilmer	219	1,463	14.97%	11	229	4.80%	127	127	100.00%	357	1,819	19.63%
Wylie	0	193	0.00%	16	16	100.00%	13	13	100.00%	29	222	13.06%
<b>Total Cities</b>	<b>236,701</b>	<b>640,460</b>	<b>36.96%</b>	<b>32,408</b>	<b>72,833</b>	<b>44.50%</b>	<b>91,033</b>	<b>91,033</b>	<b>100.00%</b>	<b>360,142</b>	<b>804,326</b>	<b>44.78%</b>
<b>SCHOOLS</b>												
Carrollton/Farmers Branch	10,235	23,018	44.47%	2,237	3,496	63.99%	5,827	5,827	100.00%	18,299	32,341	56.58%
Cedar Hill	5,978	16,837	35.51%	373	1,273	29.30%	1,156	1,156	100.00%	7,507	19,266	38.97%
Coppell	6,060	14,082	43.03%	719	1,363	52.75%	2,197	2,197	100.00%	8,976	17,642	50.88%
Dallas	88,733	268,620	33.03%	17,212	39,807	43.24%	46,960	46,960	100.00%	152,905	355,387	43.02%
Desoto	7,288	18,598	39.19%	547	1,124	48.67%	897	897	100.00%	8,732	20,619	42.35%
Duncanville	6,494	20,531	31.63%	1,015	2,205	46.03%	1,835	1,835	100.00%	9,344	24,571	38.03%
Ferris	0	113	0.00%	97	97	100.00%	15	15	100.00%	112	225	49.78%
Garland	30,660	82,386	37.22%	3,206	6,132	52.28%	6,340	6,340	100.00%	40,206	94,858	42.39%
Grand Prairie	13,123	34,390	38.16%	1,821	4,183	43.53%	2,778	2,778	100.00%	17,722	41,351	42.86%
Grapevine-Colleyville	0	0	0.00%	18	18	100.00%	137	137	100.00%	155	155	100.00%
Highland Park	7,064	10,713	65.94%	379	492	77.03%	1,872	1,872	100.00%	9,315	13,077	71.23%
Irving	10,388	35,981	28.87%	1,293	4,961	26.06%	5,705	5,705	100.00%	17,386	46,647	37.27%
Lancaster	5,605	13,084	42.84%	664	1,734	38.29%	830	830	100.00%	7,099	15,648	45.37%
Mesquite	13,663	46,777	29.21%	989	3,242	30.51%	3,426	3,426	100.00%	18,078	53,445	33.83%
Richardson	31,623	56,828	55.65%	1,767	3,401	51.96%	9,257	9,257	100.00%	42,647	69,486	61.37%
Sunnyvale	505	2,205	22.90%	194	626	30.99%	403	403	100.00%	1,102	3,234	34.08%
<b>Total Schools</b>	<b>237,419</b>	<b>644,163</b>	<b>36.86%</b>	<b>32,531</b>	<b>74,154</b>	<b>43.87%</b>	<b>89,635</b>	<b>89,635</b>	<b>100.00%</b>	<b>359,585</b>	<b>807,952</b>	<b>44.51%</b>