

# Memorandum



CITY OF DALLAS

DATE August 29, 2017

Honorable Members of the Human and Social Needs Committee:

TO Councilmember Casey Thomas, II (Chair), Deputy Mayor Pro Tem Adam Medrano (Vice Chair), Mayor Pro Tem Dwaine R. Caraway, Councilmember Omar Narvaez, Councilmember Mark Clayton, Councilmember B. Adam McGough

SUBJECT **Resilience Update**

On Tuesday, September 5, 2017, the Human and Social Needs Committee will be briefed on the Resilient Dallas Update by the City's Chief Resilience Officer, Theresa O'Donnell. The Preliminary Resilience Assessment completed in December 2016 at the end of Phase I of the Resilient Dallas strategy development process has been attached for review.

Please contact me if you have any questions or require any additional information.



Nadia Chandler-Hardy  
Chief of Community Services

[Attachment]

c: Honorable Mayor and Members of City Council  
T.C. Broadnax, City Manager  
Larry Casto, City Attorney  
Craig D. Kinton, City Auditor  
Biliera Johnson, City Secretary (Interim)  
Daniel F. Solis, Administrative Judge  
Kimberly Bizzor Tolbert, Chief of Staff to the City Manager  
Majed A. Al-Ghafry, Assistant City Manager

Jo M. (Jody) Puckett, Assistant City Manager (Interim)  
Jon Fortune, Assistant City Manager  
Joey Zapata, Assistant City Manager  
M. Elizabeth Reich, Chief Financial Officer  
Raquel Favela Chief of Economic Development & Neighborhood Services  
Theresa O'Donnell, Chief of Resilience  
Directors and Assistant Directors

# Resilience Update

**Human and Social Needs Committee  
September 5, 2017**

**Theresa O'Donnell,  
Chief Resilience Officer  
City of Dallas**



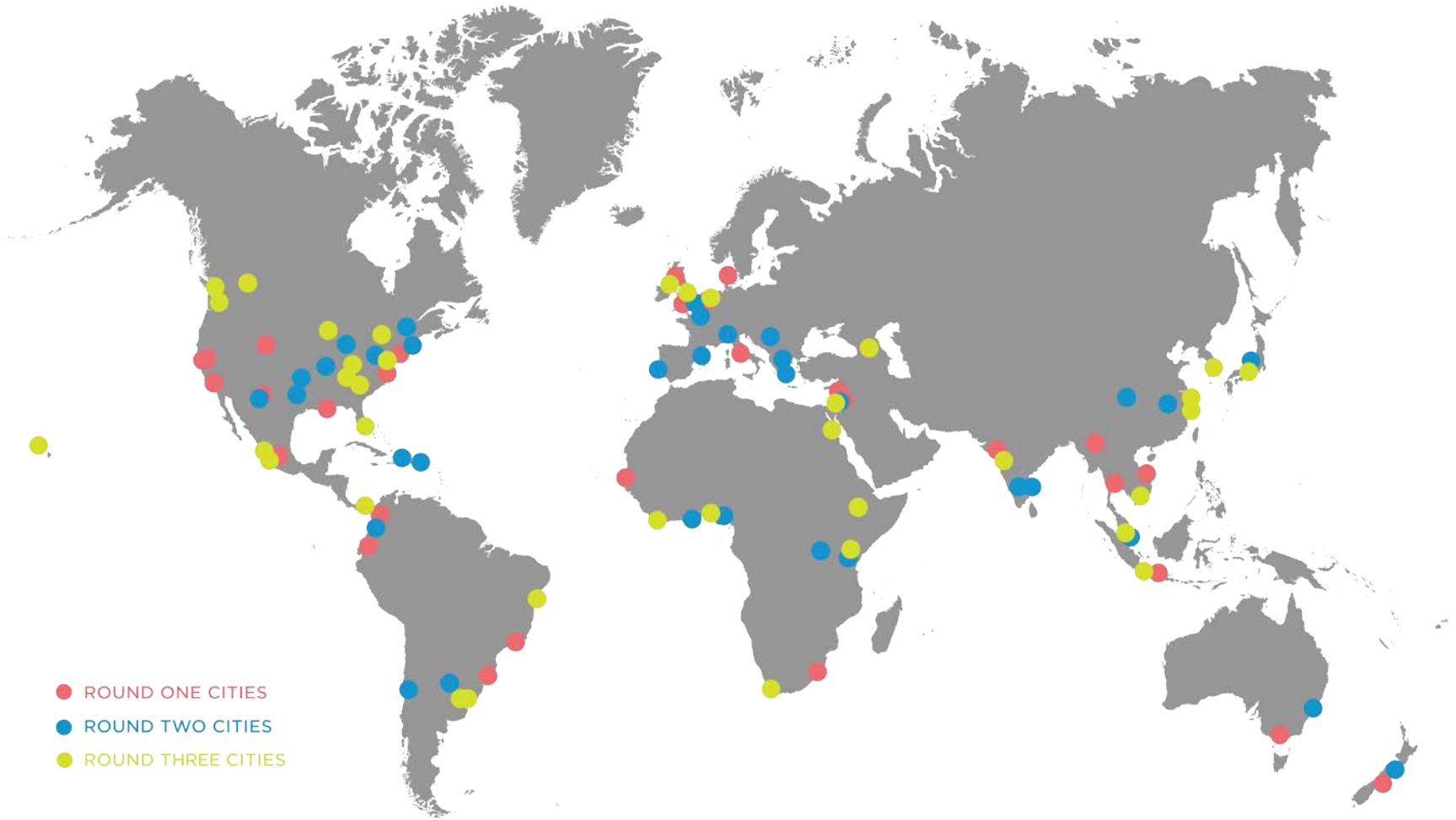
# Presentation Overview

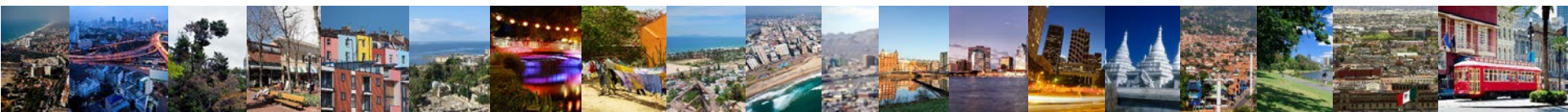
- Overview of the 100 Resilient Cities Program
- Phase I - Preliminary Resilience Assessment
- Phase II - Discovery Areas and Scope of Work
- Next Steps



100 RESILIENT CITIES

# 100 Resilient Cities





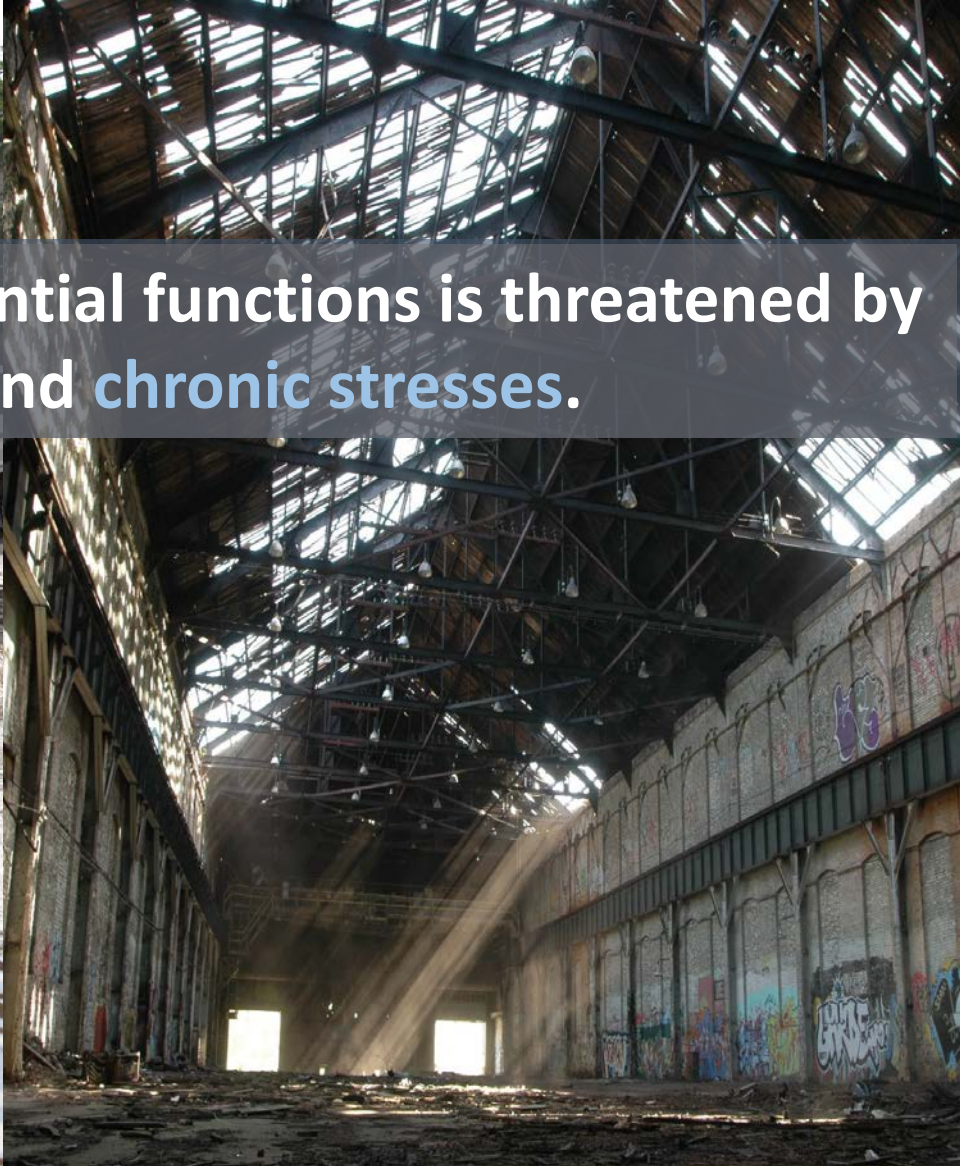
**100RC partners with cities around the world to help them become more resilient to the social, economic and physical challenges that are a growing part of the 21st century.**





Flooding in Mandalay, Myanmar

A city's ability to maintain essential functions is threatened by both acute shocks and chronic stresses.



**Sudden shocks or accumulating stresses can lead to social breakdown, physical collapse, or economic decline.**





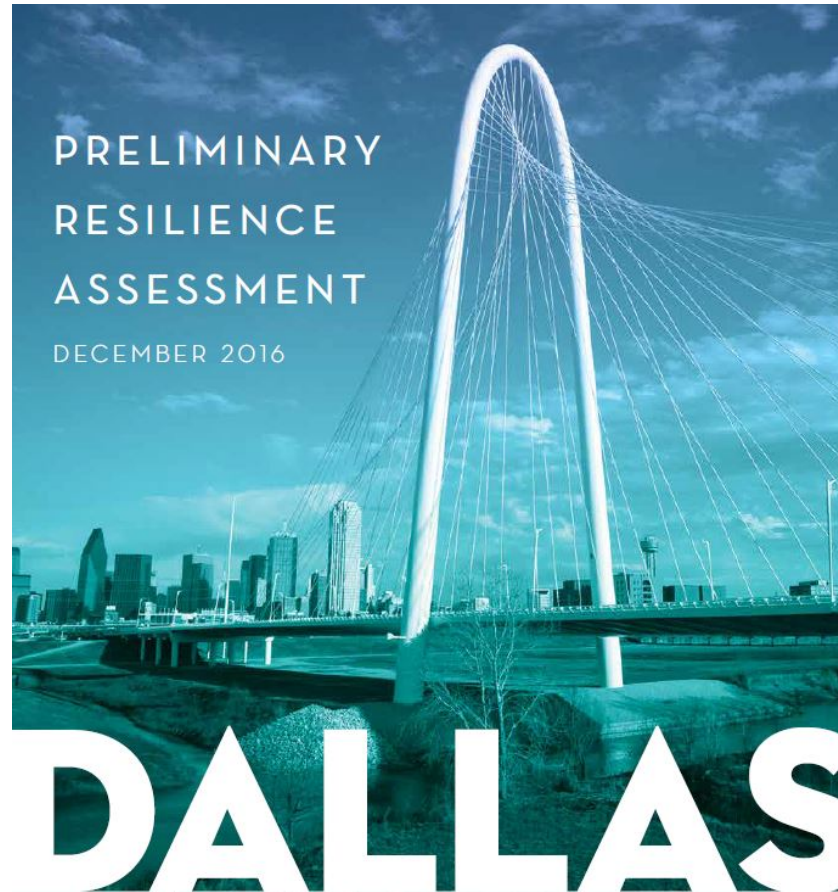
## What are acute shocks?

Earthquake  
Wildfires  
Flooding  
Sandstorms  
Extreme cold  
Hazardous materials accident  
Severe storms and extreme rainfall  
Terrorism  
Disease outbreak  
Riot/civil unrest  
Infrastructure or building failure  
Heat wave

## What are chronic stresses?

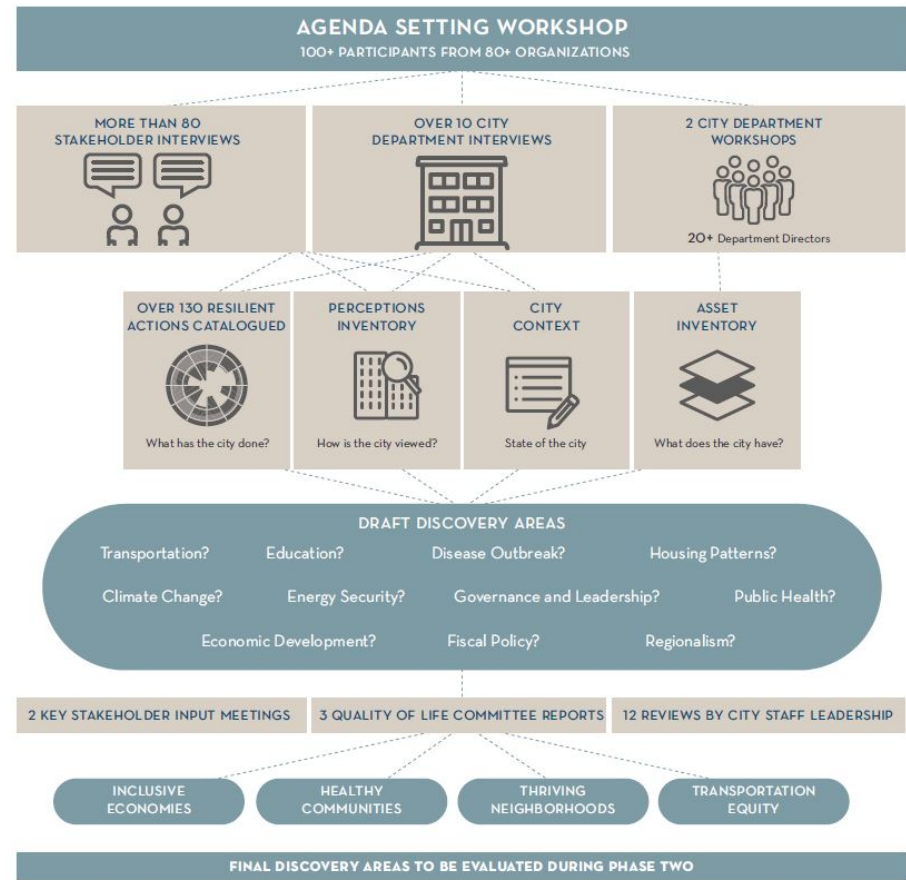
Water Scarcity  
Lack of affordable housing  
Poor air quality  
High unemployment  
Homelessness  
Poor access to public transit  
Lack of social cohesion  
Poverty/inequity  
Aging Infrastructure  
Low educational attainment  
Crime & violence

# Preliminary Resilience Assessment



# Phase I

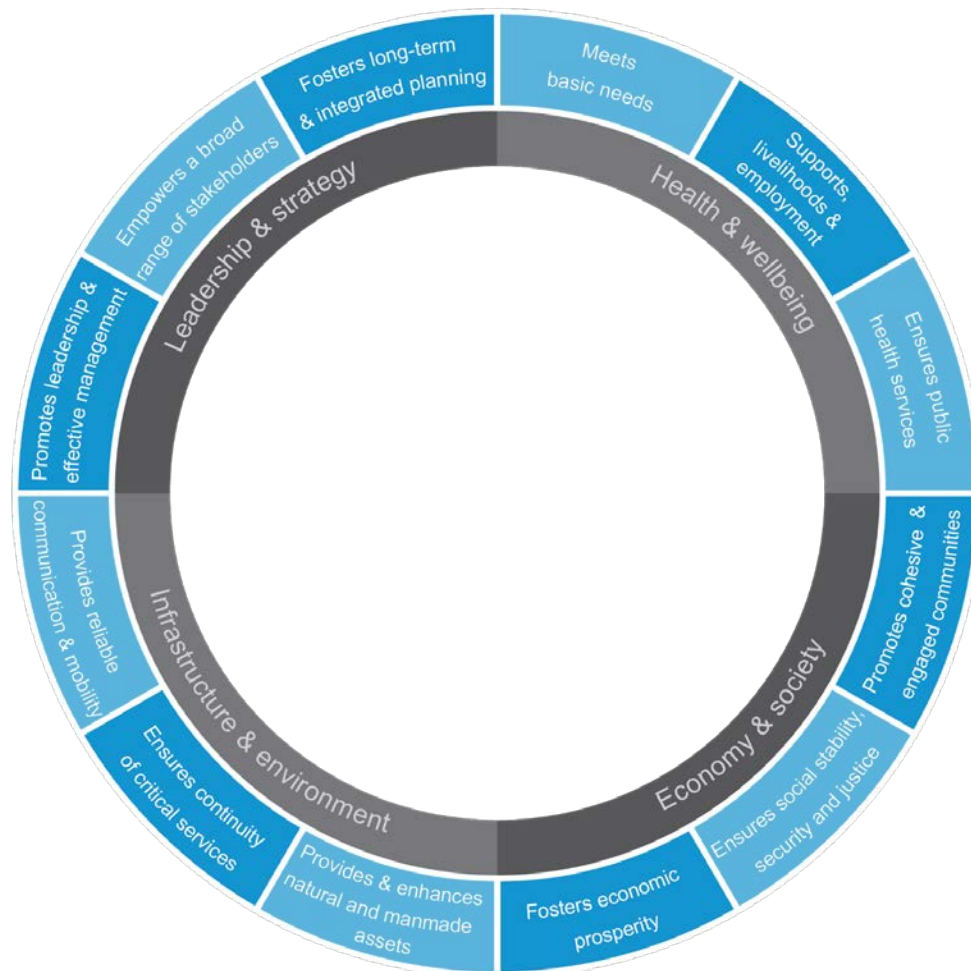
- 2 Stakeholder Workshops with 100+ attendees
- 80 individual interviews
- Staff workshops
- 130 plans & initiatives catalogued
- Perceptions survey of citizens and stakeholders
- Data collection of city information
- Inventory of assets



## URBAN RESILIENCE:

The capacity of individuals, communities, institutions, businesses, and systems within a city to survive, adapt, and grow no matter what kinds of chronic stresses and acute shocks they experience.

**Four dimensions and 12 drivers are analysed to determine a city's resilience to shocks and stresses.**





## Health & Wellbeing

The health and wellbeing of everyone living and working in the city.

Meets basic needs

Supports livelihood & employment

Ensures public health services



## Economy & Society

Organizations that enable urban populations to live peacefully, and act collectively.

Promotes cohesive & engaged economies

Ensures social stability, security & justice

Fosters economic prosperity



## Infrastructure & Environment

Built and natural infrastructure that serves, protects, and connects urban citizens.

Provides & enhances natural & built assets

Ensures continuity of critical services

Provides reliable communications & mobility





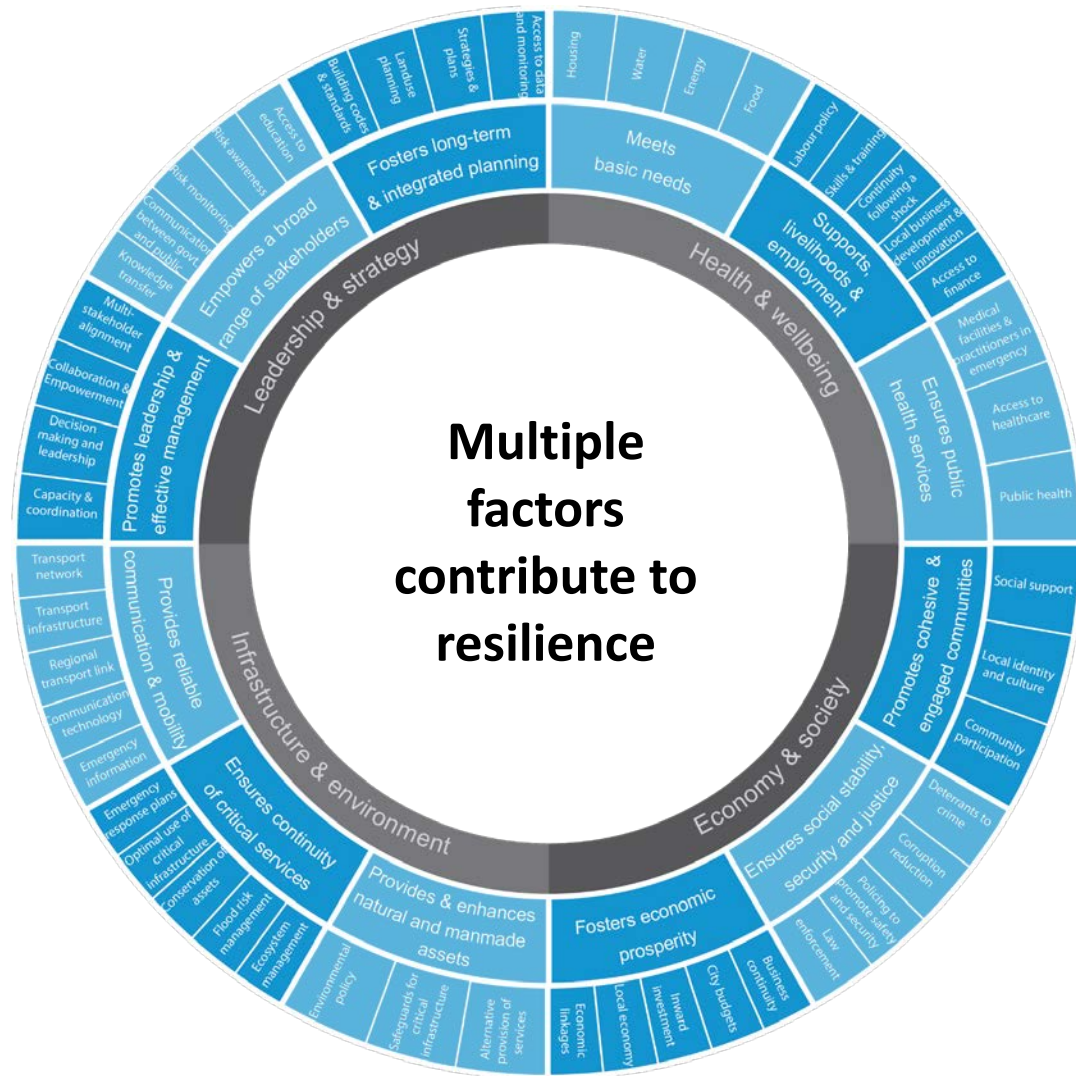
## Leadership & Strategy

Effective leadership, empowered stakeholders, and integrated planning.

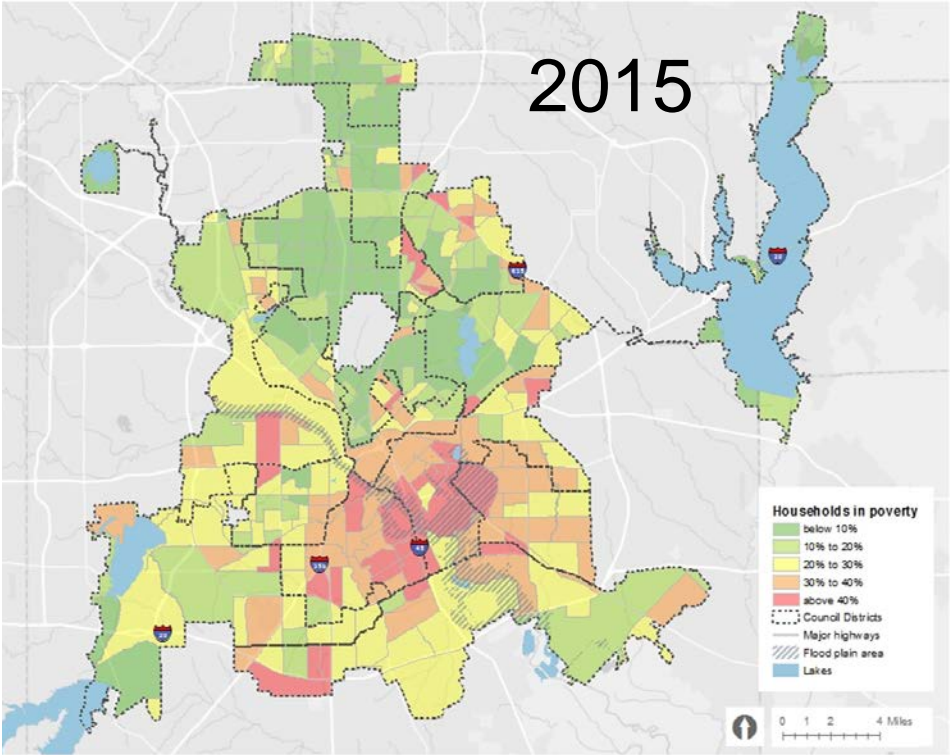
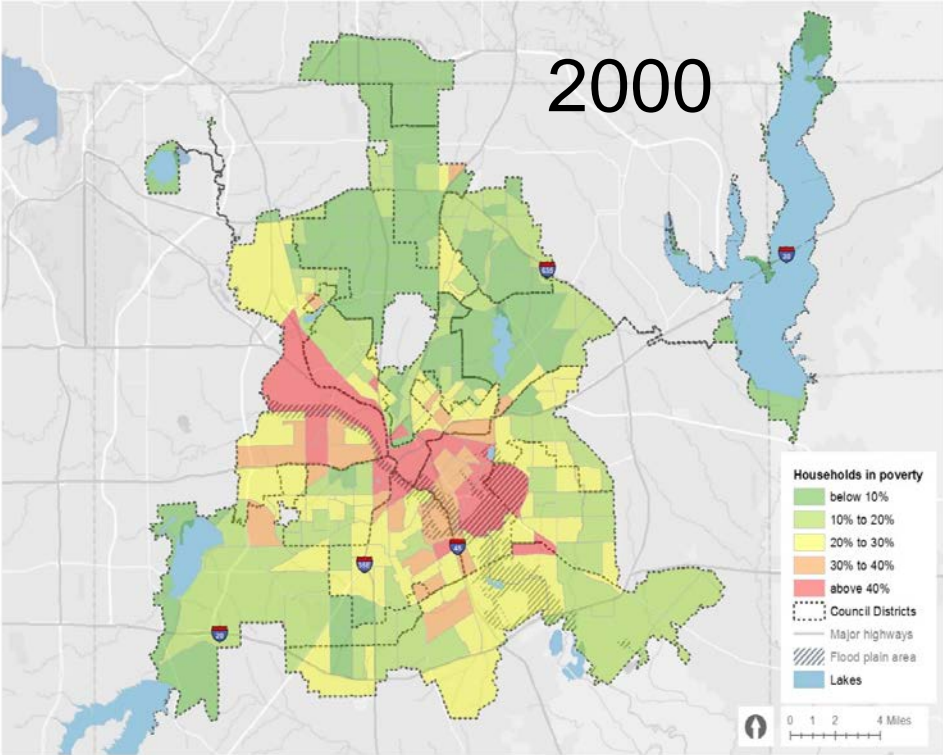
Provides leadership & effective management

Empowers a broad range of stakeholders

Fosters long-term & integrated planning



# Reducing the Epidemic of Poverty and Ending the Opportunity Gap



Source: U.S. Census Bureau, Census 1990, 2000, 2010, American Community Survey 2014 5-Year Estimates. Map produced by City of Dallas Department of Planning and Urban Design

Source: U.S. Census Bureau, Census 1990, 2000, 2010, American Community Survey 2015 5-Year Estimates. Map produced by City of Dallas Department of Planning and Urban Design

# Significant impact of the social and economic stresses on Dallas residents

- Dallas is one of the most segregated cities in the country in terms of race and income.  
*Pew Research Center, 2015*
- Dallas has the highest level of overall neighborhood-by-neighborhood inequality in the United States.  
*Urban Institute, 2015*
- Dallas has the highest rate of child poverty (38%) of any city in the United States with populations over 1 million. *Census Data, American Community Survey 2015*

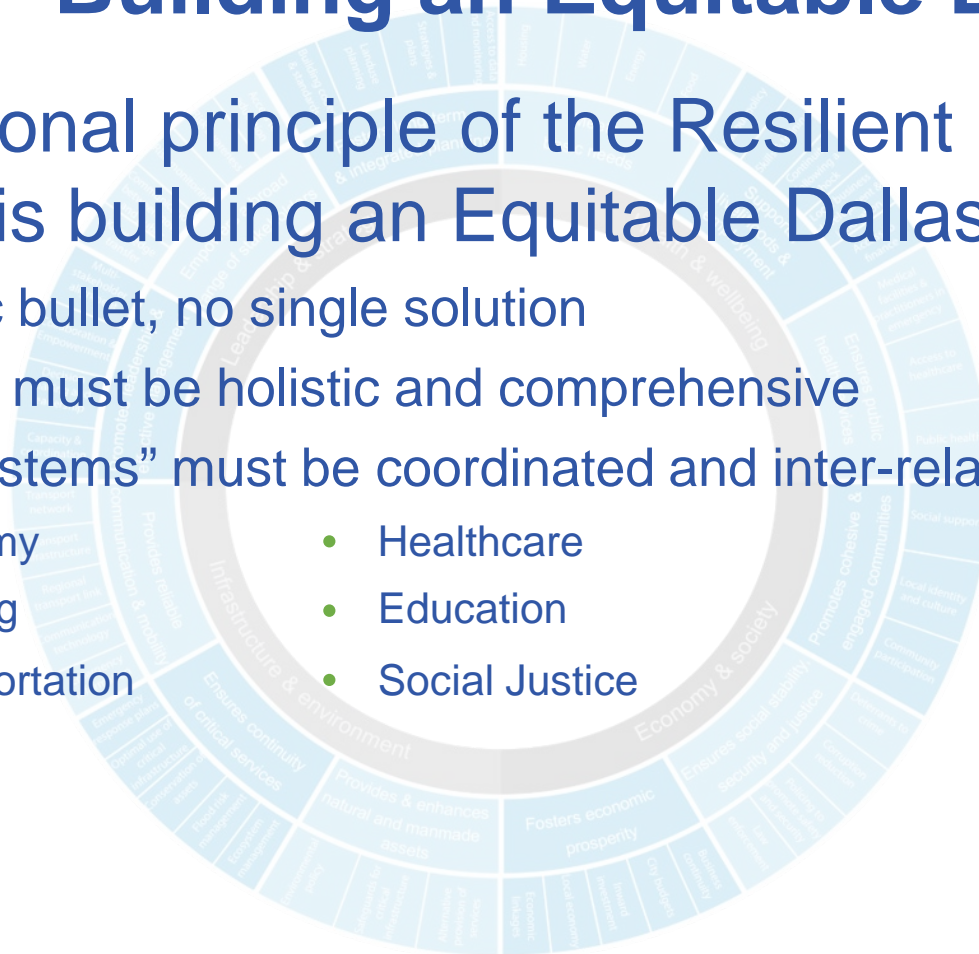
# Applying a Resilience Lens

- Understand the interrelationships of shocks and the long-term stresses that increase Dallas' vulnerability
- Understand the cascading impacts of shocks and stresses on vulnerable populations
- Build upon a foundation of strength – maximize the resources, assets, and energy available to us
- Leverage the myriad partners and stakeholders already doing good work

# Phase II - Building an Equitable Dallas

Foundational principle of the Resilient Dallas strategy is building an Equitable Dallas

- No magic bullet, no single solution
- Solutions must be holistic and comprehensive
- Major “systems” must be coordinated and inter-related
  - Economy
  - Housing
  - Transportation
  - Healthcare
  - Education
  - Social Justice



# Phase II – Team Approach

## Leadership and Working Groups

- **Building an Inclusive Economy**
  - Office of Economic Development and Housing Department
- **Improving Public Health Outcomes**
  - Office of Emergency Management and Dallas Fire and Rescue
- **Infrastructure and Climate Change**
  - Office of Environmental Quality, Public Works, and Information Technology
- **Transportation Equity**
  - Transportation Planning, UTA, DART, NCTCOG

# 100RC Partners

<p>Water Management, Energy</p>	<p>Climate and Weather, Natural Environment</p>	<p>Citizen Engagement, Government &amp; Policy, Social Equity</p>	<p>Public Health</p>
<p>Built Environment, Infrastructure, Land Use</p>	<p>Transportation</p>	<p>Information and Technology, Cyber Security</p>	<p>Finance and Insurance</p>
<p>Education/Skills and Training, Economic Development, Culture and Arts</p>	<p>Housing</p>	<p>DRM and Emergency Response</p>	

**100 RC currently has 90 partners, offering 130 services valued at \$200 Million**



# Four Discovery Areas

- Harnessing the power of the robust North Central Texas economy to be more inclusive and create economic resilience for Dallas residents
- Exploring opportunities to improve Public Health outcomes and decrease health disparity
- Assessing the conditions in Dallas neighborhoods, and understanding the impacts of climate change on the natural and built environment
- Preparing for a 21st century Urban Mobility by leveraging the region's transportation investment to expand mobility options, and improve transportation equity

# Robust North Texas Economy

## DFW Economic Overview

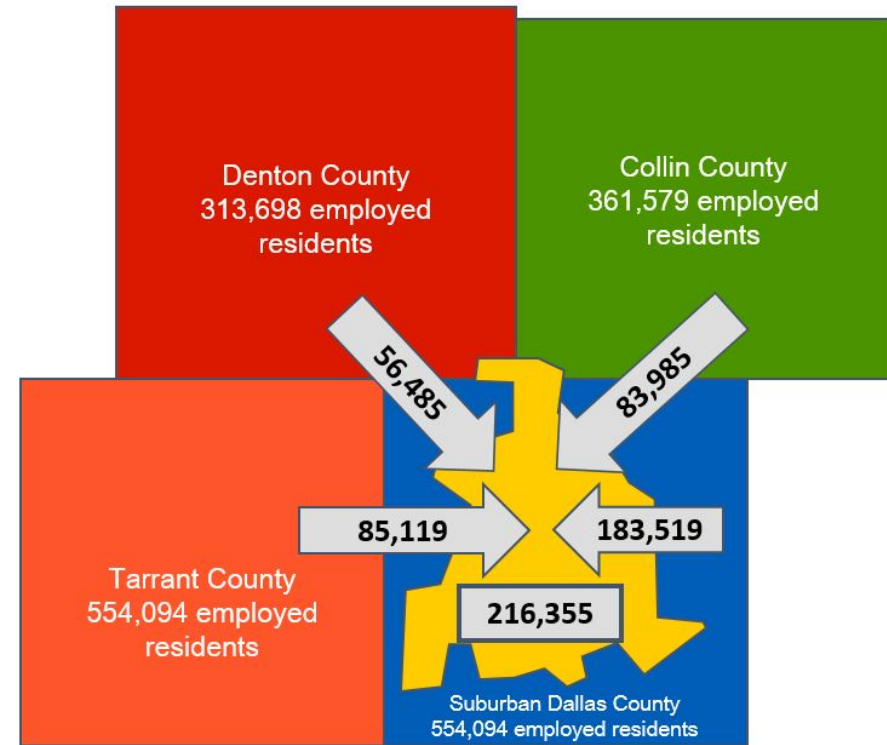
- 4th largest population in U.S.
- 6th largest economy by output
- 5th largest by personal income
- 5th largest employment market
- Unemployment rate of 3.7%



**Dallas is the vibrant, urban core of a thriving, prosperous region**

# Dallas must import talent to fill top jobs

- Dallas has well over 1 million jobs
- 625,000+ workers commute into Dallas every day to work
- 263,000 workers leave Dallas everyday to fill low-skill jobs



# Economic Opportunity Gap

- Despite the robust economy, the poverty rate in Dallas ***increased by 42%*** from 2000-2014
- Strong economy has left many residents behind
  - 39% of households in Dallas live in asset poverty
  - 45% of households with children live in asset poverty
- Unemployed and underemployed people often lack the skills/training necessary to prosper in this strong economy

# Discovery Area 1 – Building an Inclusive Economy

- Understand how the robust North Central Texas economy could expand to become more inclusive, and provide market-driven opportunities to residents who have been excluded from the traditional labor force during this remarkable period of prosperity.

# Inclusive Economy

- Who are the people in Dallas who are impoverished, disconnected from the traditional labor force, struggling financially, and are most vulnerable to financial/economic risk?
- What is the current state of service provision to vulnerable populations and what are the gaps of service provision?

**Partners** – AECOM, Fourth Economy, Manchester Bidwell

## **Deliverables** -

- Community profile and needs assessment
- Statistical analysis of economically vulnerable populations
- Analysis that describes the major factors/socioeconomic characteristics associated with lack of access to mainstream labor market



# Inclusive Economy

- What are the barriers and impediments that prevent some Dallas residents from finding and maintaining living wage employment?
- What resources are available to the City and its partners to better provide service to vulnerable populations?

**Stakeholders** – Workforce Solutions of Greater Dallas, Dallas Community College District, United Way, Dallas Independent School District

## Deliverables -

- An analysis of barriers and impediments for vulnerable populations in Dallas
- Workshop with impacted community members to discuss barriers, solutions, and how resources can be leveraged to provide coordinated services and referrals

**WORKFORCESOLUTIONS**  
GREATER DALLAS



Dallas County  
Community College District



Dallas  
Independent  
School  
District



# Healthcare in Dallas





# Disparity in Health Care

Report: Texas has the highest number of uninsured Hispanic kids in the country

About two out of three of uninsured Hispanic children are eligible for Medicaid or CHIP but not enrolled.

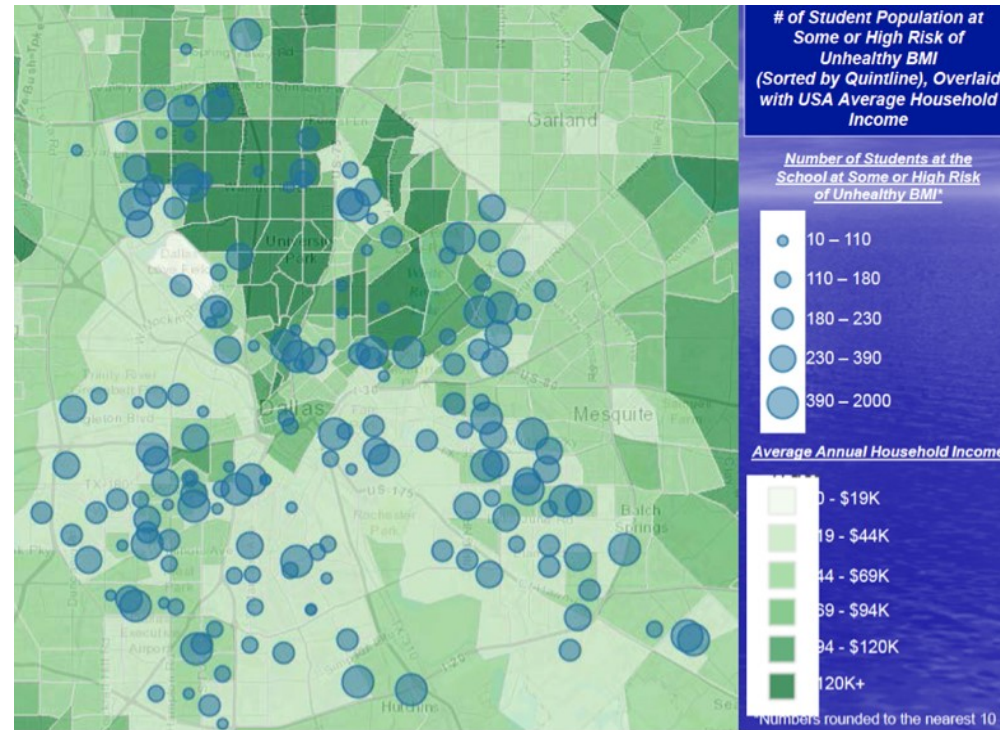


Learn more: <http://bit.ly/1ZvblUz>



# Growing up poor in Dallas

- 38% of Dallas children live in poverty
- 20% don't have health insurance
- 28% have inadequate food and nutrition
- 160,000 children are obese
- 60,000 children have asthma



# Dallas Fire and Rescue

- \$267M annual operating budget
- 82.5% of calls for service are not fires



# Dallas Fire and Rescue

First line of defense in healthcare

- 1,200 highly-trained paramedics
- 43 ambulances
- 218,000 runs a year
- 69,000 runs to Emergency Rooms
- Average cost is \$1575



# Health Deserts

60% of Emergency Room visits could be more appropriately handled by a primary care physician



# Discovery Area 2 – Healthy Communities

- Identify how the City of Dallas can make a meaningful contribution to improving public health outcomes for its vulnerable residents.

# Healthy Communities

- What are the economic, physical, social determinants of health that contribute to traumatic environmental stress in Dallas' neighborhoods of concentrated poverty and what are the barriers and impediments that make it difficult for residents to receive adequate health care services?

**Partners** - George Washington University, Children's Health, Dallas Health and Wellness Alliance, Perkins + Will, and Health and Human Services

## **Deliverables** -

- Identify systemic barriers and root causes of community and childhood adversity
- Develop community understanding of how adversity creates stressors that become toxic to a child's development and long-term health
- Provide recommendations to address chronic stresses and the inter-relationship with acute shocks



# Healthy Communities

- What role can Dallas Fire and Rescue play to improve public health outcomes and increase health literacy in communities with a high risk of health care disparity?

**Stakeholders** - DFW Hospital Council, Dallas County Medical Society, Dallas County Health, Parkland Hospital, UT Southwestern, NCTTRAC, American Heart Association, American Red Cross, Children's Health

## Deliverables -

- Research best practice models and determine which programs, operational strategies, and public education/curriculum models that are the most appropriate and effective for Dallas
- Identify top goals and priorities to make Dallas Fire Rescue a leading edge community paramedicine program





# Thriving Neighborhoods



## Discovery Area 3 – Thriving Neighborhoods

- Assess the conditions in Dallas' low and moderate-income neighborhoods, and explore the impacts of extreme weather events on the natural and built environment.

# Thriving Neighborhoods

- How can public sector investment in targeted neighborhoods unlock development potential and new employment opportunities for vulnerable populations?
- How can city and other governmental resources be prioritized and strategically deployed to serve as catalysts for private investment and development?

**Partners** –Policy Solutions



REINVESTMENT  
FUND

**Deliverables** -

- Perform a market value analysis to identify and define neighborhood typologies based on market strength and existing levels of investment.
- Identify intervention strategies for areas of need and catalyst areas.
- Recommended housing and economic development incentive programs, regulatory policies, and models for public-private partnerships

# Thriving Neighborhoods

## Web-based portal for GIS mapping analysis



- Build a resilience heatmap by layering on demographic/economic data, social determinants of health, transportation infrastructure and other datasets onto MVA database

<p><b>Vulnerable populations</b> Demographics Socio-economic data Jobs and income</p>	<p><b>Infrastructure in disinvested neighborhoods</b> Street conditions Sub-standard water, sewer, sidewalks, street lights Flood plain, drainage and storm sewers</p>
<p><b>Health/risk factors</b> Availability of health services Food deserts – healthy food and pharmacies Incidence of chronic disease Parks and open space EMS runs</p>	<p><b>Transportation/Mobility</b> Public transit – routes, frequency, timing</p> <p><b>Asset mapping of services</b> Libraries, rec centers, churches, non-profit and philanthropic services</p>

# Thriving Neighborhoods: Questions-Partners-Tasks

- How do extreme weather events affect Dallas' natural resources and critical infrastructure?

**Partners** - AIR Worldwide, Texas Trees Foundation, The Nature Conservancy American Geophysical Union (AGU), and Trust for Public Lands



**Stakeholders** – Office of Environmental Quality, Office of Risk Management, Trinity Watershed Management, Dallas Water Utilities, Office of Emergency Management

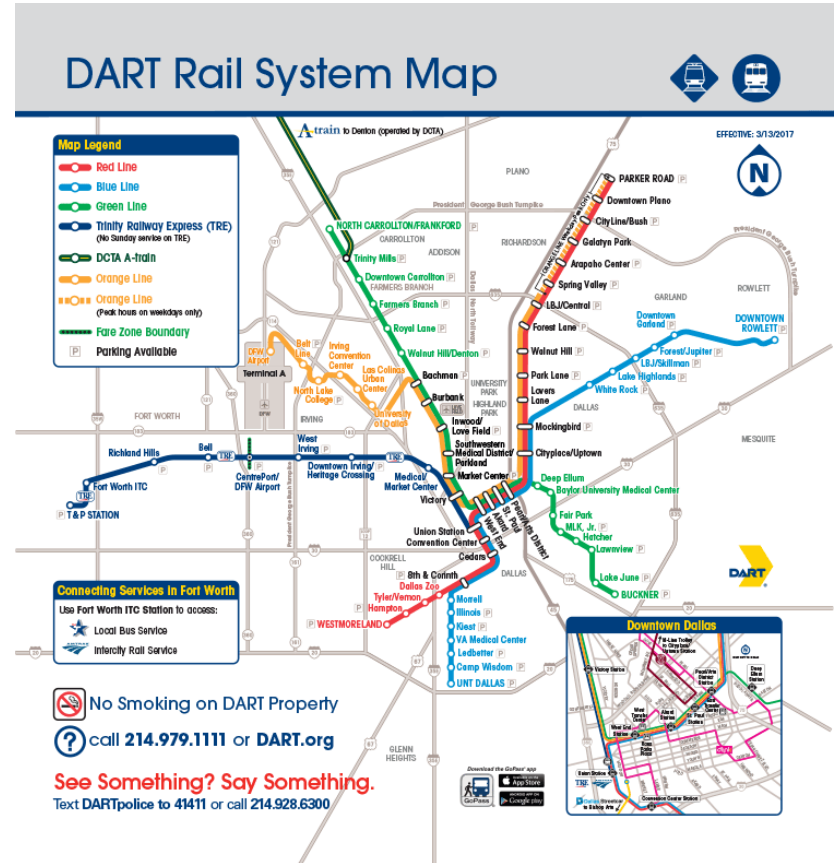


## Deliverables -

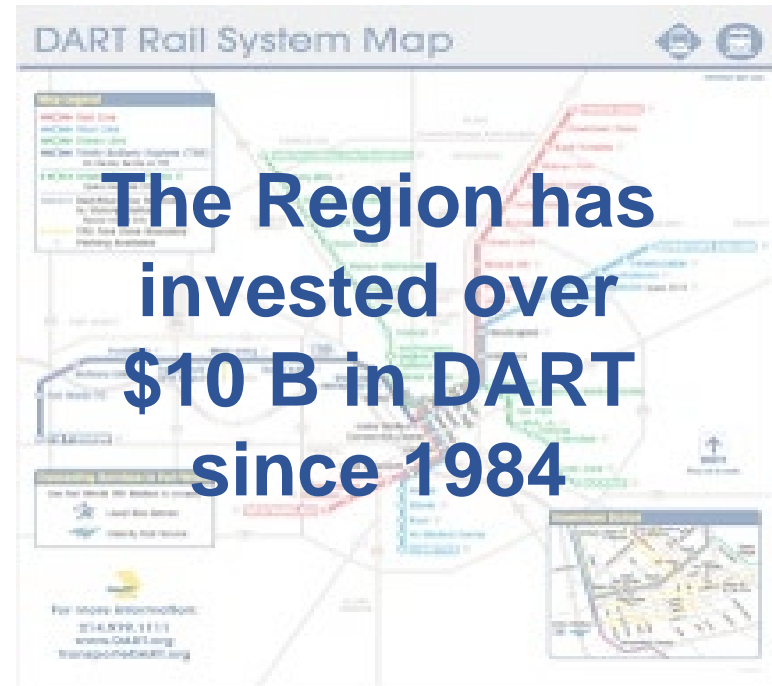
- Catastrophe risk modelling - AIR
- Urban Heat Island Study – Texas Trees Foundation
- Accelerating Environmental Health in Dallas – The Nature Conservancy
- Thriving Earth Exchange Science Partnership - AGU
- Smart Growth for Dallas – Trust for Public Lands



# Transportation Equity



# Mobility Options are expanding



This year, DART received \$292 million from Dallas taxpayers

# Mobility, Jobs, and Housing

- The Metroplex ranks 5th nationally in jobs
- Less than 20% of jobs are accessible by transit in less than 90 minutes
- More than 70% of HUD assisted properties are considered unaffordable when housing costs and transportation costs are combined

## Jobs within 30 minutes by transit

Most of Dallas' jobs accessible by transit within 30 minutes are in downtown and surrounding areas, though some suburbs have job centers near public transportation routes. But while the Dallas-Fort Worth region as a whole ranks fifth nationally in terms of the number of jobs, it ranks 21st in how many of them can be reached by transit in under one hour.

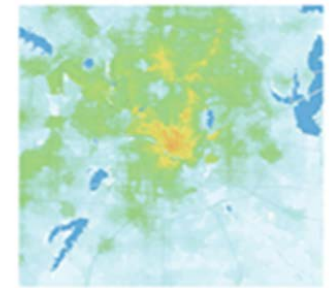
Averaged 7 - 9 A.M.



Austin



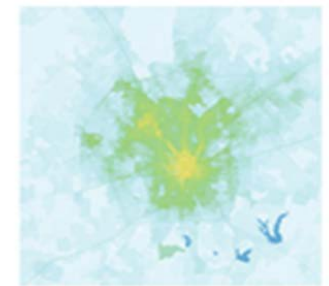
Dallas



Houston



San Antonio





# Discovery Area 4 – Transportation Equity

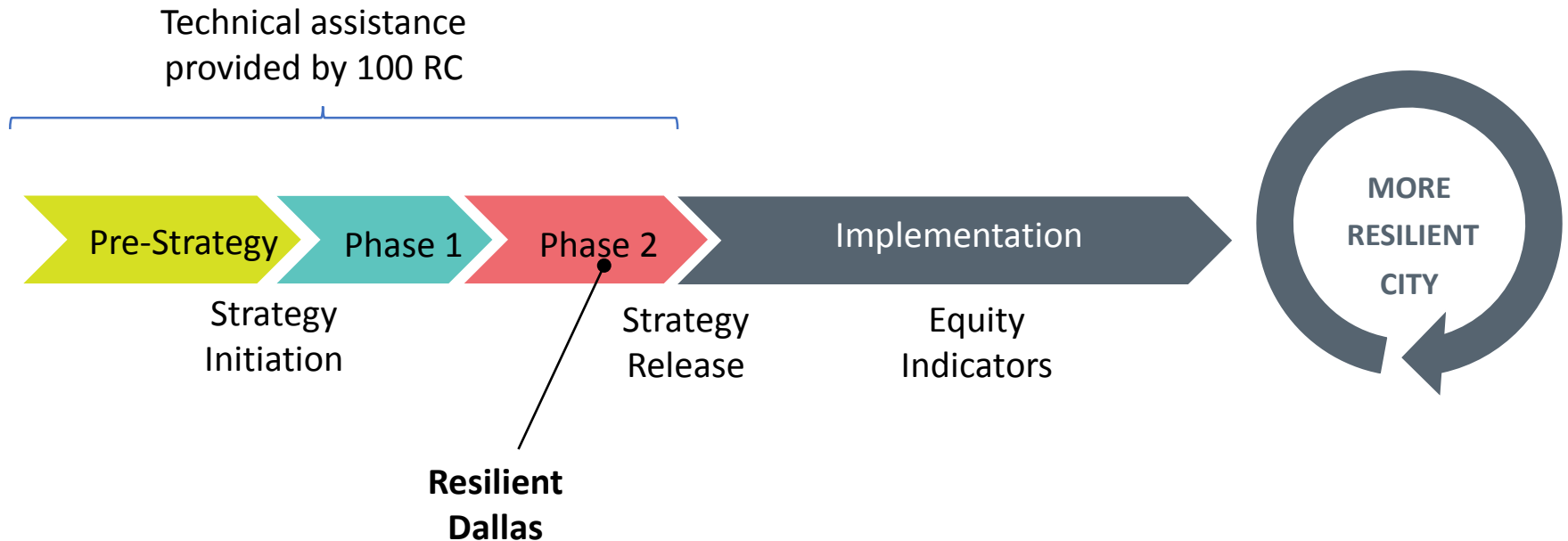
- Identify how Dallas can leverage transportation investment to strengthen access to economic opportunities and improve the quality of life in low and moderate-income neighborhoods.

# Transportation Equity

- What is the current state of transportation equity for Dallas residents?
- What projects or policies could Dallas' transit providers implement to provide transit dependent populations with improved access to employment, education, healthcare and basic retail services while also balancing the need to attract new riders?
- **Partners** - University of Texas at Arlington, AECOM, Staff
- **Stakeholders** - UTA, Dallas Area Rapid Transit, North Central Texas Council of Governments, Brunk Government Relations Services.
- **Deliverables** -
  - Comprehensive policy analysis and quantitative study of transportation metrics including; transportation affordability, job accessibility by mode, transit coverage, transit quality, and accessibility
  - Prioritized list of recommendations to improve bus coverage and accessibility to vulnerable populations and strategies for solving last mile transportation issues

# Resilient Strategy Process

The strategy is a tactical roadmap to build resilience that articulates priorities and specific initiatives for short-, medium-, and long-term implementation

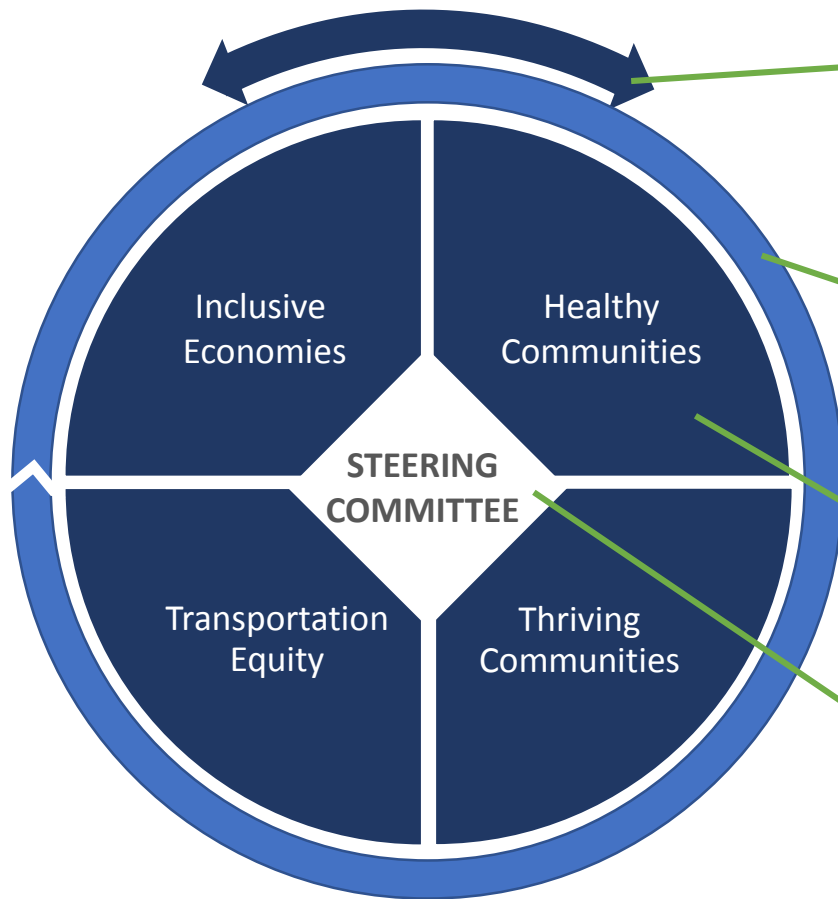


# Equity: Partners

- CUNY Institute for State and Local Government. Equality Indicators cohort study
- W.K. Kellogg Foundation \$1.75M grant to Communities Foundation. Truth, Racial Healing and Transformation



# Participation and Input



## Citizen Advisory Committee

Chaired by Regina Montoya  
15+ Members  
Review and sounding board for strategy

## Community Stakeholder Committee

Convened by Theresa O'Donnell  
120+ Members  
Informed and Validated Discovery Areas

## Discovery Area Working Groups

Led by City Departments  
6-10 Members from City and Community  
Researches and analyzes each discovery area

## Steering Committee

Chaired by Theresa O'Donnell  
Working Group Leads  
Ensures synergy of working groups

# Next Steps and Questions

- Workgroups to conclude research analysis
- Citizen Advisory Committee review strategy recommendations on September 19th
- Present Resilient Dallas Strategy recommendations to Human and Social Needs Committee in early-October

# Resilience Update

**Human and Social Needs Committee  
September 5, 2017**

**Theresa O'Donnell,  
Chief Resilience Officer  
City of Dallas**

