

HUMAN AND SOCIAL NEEDS
DALLAS CITY COUNCIL COMMITTEE AGENDA

RECEIVED

2017 OCT 11 PM 12:51

CITY SECRETARY
DALLAS, TEXAS

MONDAY, OCTOBER 16, 2017
CITY HALL
COUNCIL BRIEFING ROOM, 6ES
1500 MARILLA STREET
DALLAS, TEXAS 75201
11:00 A.M. – 12:30 P.M.

Chair, Council Member Casey Thomas, II
Vice Chair, LGBT Task Force Chair, Deputy Mayor Pro Tem Adam Medrano
Youth Commission Chair, Mayor Pro Tem Dwaine R. Caraway
Senior Citizen Task Force Chair, Council Member Omar Narvaez
Education Task Force, Poverty Task Force, Homeless LGC Co Chair, Council Member Mark Clayton
Council Member B. Adam McGough

Call to Order

1. Approval of October 2, 2017 Minutes

BRIEFINGS

2. 100 Resilient Cities Update
(For Information Only) Theresa O'Donnell
Chief of Resilience

BRIEFING MEMORANDUM

3. Vital Statistics Departmental Transfer
(For Information Only) Cheritta Johnson
Office of Community Care, Interim Director

4. **Upcoming City Council Action Item(s)**

October 25, 2017

- A. Agenda Items Cheritta Johnson
Office of Community Care, Interim Director

5. Attachments:

- A. Follow-Up Homeless Responses (October 2, 2017 Meeting)

6. Committee Forecast

Adjourn



Casey Thomas, II, Chair
Human and Social Needs Committee

EXECUTIVE SESSION NOTICE

A closed executive session may be held if the discussion of any of the above agenda items concerns one of the following:

1. seeking the advice of its attorney about pending or contemplated litigation, settlement offers, or any matter in which the duty of the attorney to the City Council under the Texas Disciplinary Rules of Professional Conduct of the State Bar of Texas clearly conflicts with the Texas Open Meetings Act. [Tex. Govt. Code §551.071]
2. deliberating the purchase, exchange, lease, or value of real property if deliberation in an open meeting would have a detrimental effect on the position of the city in negotiations with a third person. [Tex. Govt. Code §551.072]
3. deliberating a negotiated contract for a prospective gift or donation to the city if deliberation in an open meeting would have a detrimental effect on the position of the city in negotiations with a third person. [Tex. Govt. Code §551.073]
4. deliberating the appointment, employment, evaluation, reassignment, duties, discipline, or dismissal of a public officer or employee; or to hear a complaint or charge against an officer or employee unless the officer or employee who is the subject of the deliberation or hearing requests a public hearing. [Tex. Govt. Code §551.074]
5. deliberating the deployment, or specific occasions for implementation, of security personnel or devices. [Tex. Govt. Code §551.076]
6. discussing or deliberating commercial or financial information that the city has received from a business prospect that the city seeks to have locate, stay or expand in or near the city and with which the city is conducting economic development negotiations; or deliberating the offer of a financial or other incentive to a business prospect. [Tex Govt. Code §551.087]
7. deliberating security assessments or deployments relating to information resources technology, network security information, or the deployment or specific occasions for implementations of security personnel, critical infrastructure, or security devices. [Tex. Govt. Code §551.089]

HANDGUN PROHIBITION NOTICE FOR MEETING OF GOVERNMENTAL ENTITIES

"Pursuant to Section 30.06, Penal Code (trespass by license holder with a concealed handgun), a person licensed under Subchapter H, Chapter 411, Government Code (handgun licensing law), may not enter this property with a concealed handgun."

"De acuerdo con la sección 30.06 del código penal (ingreso sin autorización de un titular de una licencia con una pistola oculta), una persona con licencia según el subcapítulo h, capítulo 411, código del gobierno (ley sobre licencias para portar pistolas), no puede ingresar a esta propiedad con una pistola oculta."

"Pursuant to Section 30.07, Penal Code (trespass by license holder with an openly carried handgun), a person licensed under Subchapter H, Chapter 411, Government Code (handgun licensing law), may not enter this property with a handgun that is carried openly."

"De acuerdo con la sección 30.07 del código penal (ingreso sin autorización de un titular de una licencia con una pistola a la vista), una persona con licencia según el subcapítulo h, capítulo 411, código del gobierno (ley sobre licencias para portar pistolas), no puede ingresar a esta propiedad con una pistola a la vista."

Human and Social Needs Committee Meeting Record

Meeting Date: Monday, October 2, 2017

Convened: 11:01 A.M. Adjourned: 12:14 P.M.

Committee Members Present:

Council Member Casey Thomas, II, Chair
Deputy Mayor Pro Tem Adam Medrano, Vice Chair
Mayor Pro Tem Dwaine R. Caraway
Council Member Omar Narvaez
Council Member Mark Clayton
Council Member B. Adam McGough

Committee Members Absent:

Other Council Members Present:

Council Member Phillip T. Kingston

Staff Present:

Julianne Nguyen
Marichelle Samples
Barbara Martinez
Charles Estee
Yolanda Ramirez

AGENDA:

Call to Order

1. Approval of Minutes from the September 18, 2017 Human and Social Needs Committee Meeting

Presenter(s): Council Member Casey Thomas, II, Chair

Information Only:

Action Taken/Committee Recommendation(s):

A motion was made to approve the September 18, 2017 minutes.

Motion made by: DMPT Medrano, Vice Chair

Item passed unanimously:

Item failed unanimously:

Motion Seconded by: CM Clayton

Item passed on a divided vote:

Item failed on a divided vote:

2. Office of Welcoming Communities and Immigrant Affairs Update

Presenter(s): Liz Cedillo-Pereira, Director of Welcoming Communities and Immigrant Affairs

Information Only:

Action Taken/Committee Recommendation(s):

CM Clayton states he does not want to get ready to get ready. We have a good sense about the problems and he is ready to see action. He questions if we know the economic contribution the DACA community has on our city and the federal/state passes the law, how do we do public policy on this matter? CM Kingston enquires about what will our officers do in practice? Liz responds with the inquiry provision has not been blocked. What we have from the Federal District Court is clarification on the constitution limitations. It is at the discretion of the officer that if a person is under arrest or lawfully detained for an unrelated criminal matter the inquiry is permissible per the district court decision. CM Kingston would like to have an executive session in another committee on what this is going to look like in practice. He would like the message to be clear to law enforcement personnel that this is inappropriate and wants the ability to hold that against them.

Motion made by:
Item passed unanimously:
Item failed unanimously:

Motion Seconded by:
Item passed on a divided vote:
Item failed on a divided vote:

3. Building Community Resilience: The Pair of ACEs

Presenter(s): Cheryl McCarver, Dallas Building Community Resilience, Chief Community Liaison
Information Only:

Action Taken/Committee Recommendation(s):

Motion made by:
Item passed unanimously:
Item failed unanimously:

Motion Seconded by:
Item passed on a divided vote:
Item failed on a divided vote:

4. Upcoming Human and Social Needs Agenda Item(s)

Presenter(s): CM Casey Thomas, II
Information Only:

Action Taken/Committee Recommendation(s):

5. Attachments:

Presenter(s): Charletra Sharp, Interim Director of Office of Homeless Solutions/Nadia Chandler Hardy, Chief of Community Services
Information Only:

Action Taken/Committee Recommendation(s):

CM Thomas suggests considering putting the “where are the homeless coming from” question back on the Point In Time (PIT) count reports so we can have insight on how to provide services for the individuals. DMPT Medrano would like the number of homeless interviewed for the years of 2016 & 2017 to be included on the Location of Origin chart. He also would like to know which city-involvement shelters use HMIS. MPT Caraway would like street outreach to gather information from the homeless laying on the streets.

Motion made by:
Item passed unanimously:
Item failed unanimously:

Motion Seconded by:
Item passed on a divided vote:
Item failed on a divided vote:

6. Committee Forecast

Presenter(s):
Information Only:

Action Taken/Committee Recommendation(s):

Motion made by:
Item passed unanimously:
Item failed unanimously:

Motion Seconded by:
Item passed on a divided vote:
Item failed on a divided vote:

APPROVED BY:

ATTEST:

Casey Thomas, II, Chair
Human and Social Needs Committee

Zenae Palmer, Coordinator
Human and Social Needs Committee

DRAFT

Memorandum



CITY OF DALLAS

DATE October 11, 2017

Honorable Members of the Human and Social Needs Committee:
TO Councilmember Casey Thomas, II (Chair), Deputy Mayor Pro Tem Adam Medrano
(Vice Chair), Mayor Pro Tem Dwaine R. Caraway, Councilmember Omar Narvaez,
Councilmember Mark Clayton, Councilmember B. Adam McGough

SUBJECT **100 Resilient Cities Update**

On Monday, October 16, 2017, the Human and Social Needs Committee will be briefed on the 100 Resilient Cities Update by the Chief Resilience Officer, Theresa O'Donnell.

Please contact me if you have any questions or require any additional information.

A handwritten signature in blue ink, appearing to read 'Nadia'.

Nadia Chandler-Hardy
Chief of Community Services

[Attachment]

c: Honorable Mayor and Members of City Council
T.C. Broadnax, City Manager
Larry Casto, City Attorney
Craig D. Kinton, City Auditor
Billerae Johnson, City Secretary (Interim)
Daniel F. Solis, Administrative Judge
Kimberly Bizzor Tolbert, Chief of Staff to the City Manager
Majed A. Al-Ghafry, Assistant City Manager

Jo M. (Jody) Puckett, Assistant City Manager (Interim)
Jon Fortune, Assistant City Manager
Joey Zapata, Assistant City Manager
M. Elizabeth Reich, Chief Financial Officer
Raquel Favela, Chief of Economic Development & Neighborhood Services
Theresa O'Donnell, Chief of Resilience
Directors and Assistant Directors

100 Resilient Cities Update

Human and Social Needs Committee

October 16, 2017

Theresa O'Donnell,
Chief Resilience Officer
City of Dallas



Presentation Overview

- Phase II- Scope of Work
 - Analysis and Findings
 - Initial Recommendations
- Next Steps and Questions

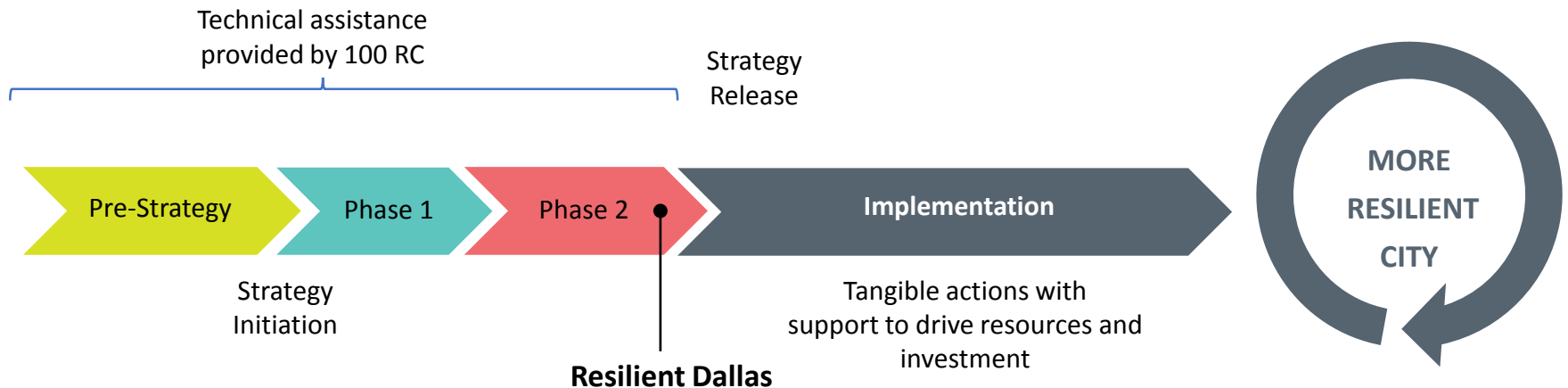


100RC partners with cities around the world to help them become more resilient to the social, economic and physical challenges that are a growing part of the 21st century.

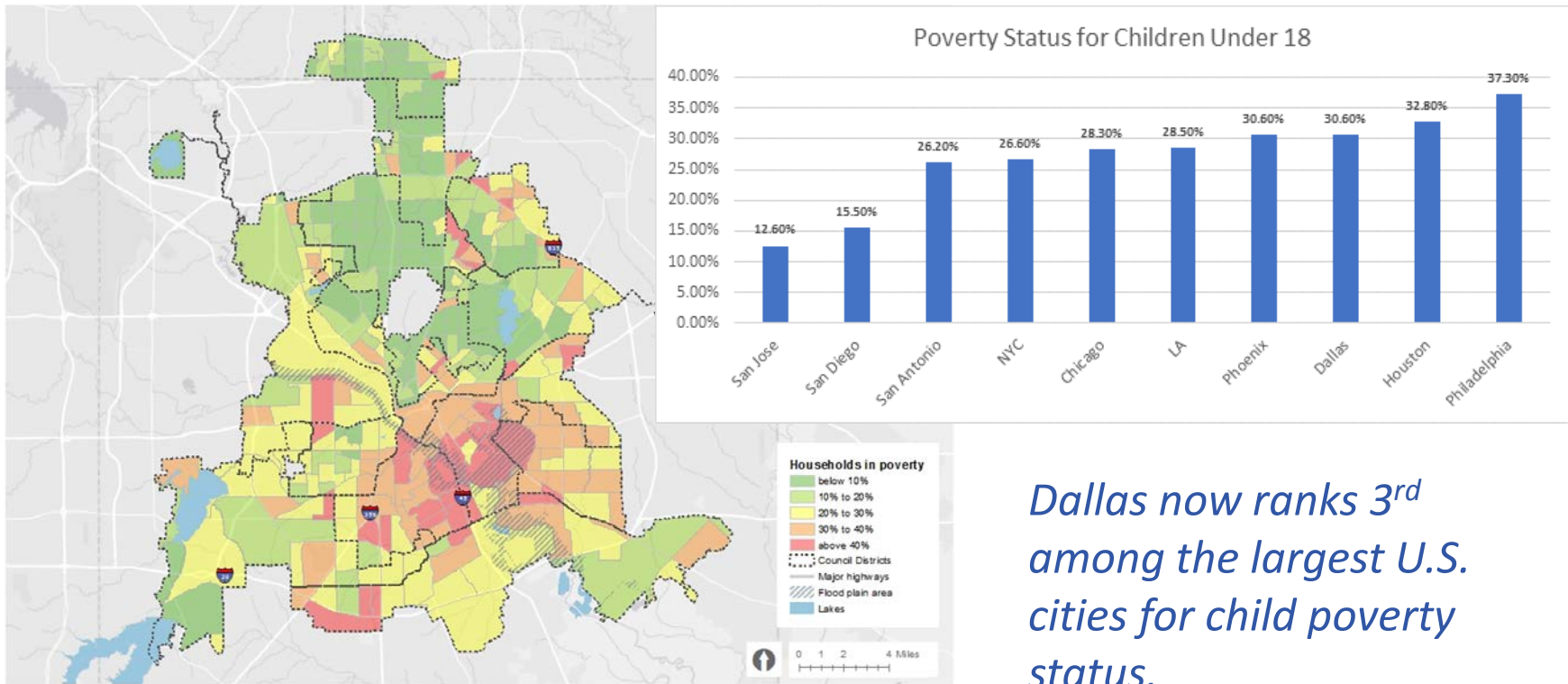


We are here

The Strategy is a tactical roadmap to build resilience that articulates priorities and specific initiatives for implementation



Reducing the Epidemic of Poverty and Ending the Opportunity Gap



Dallas now ranks 3rd among the largest U.S. cities for child poverty status.

2015

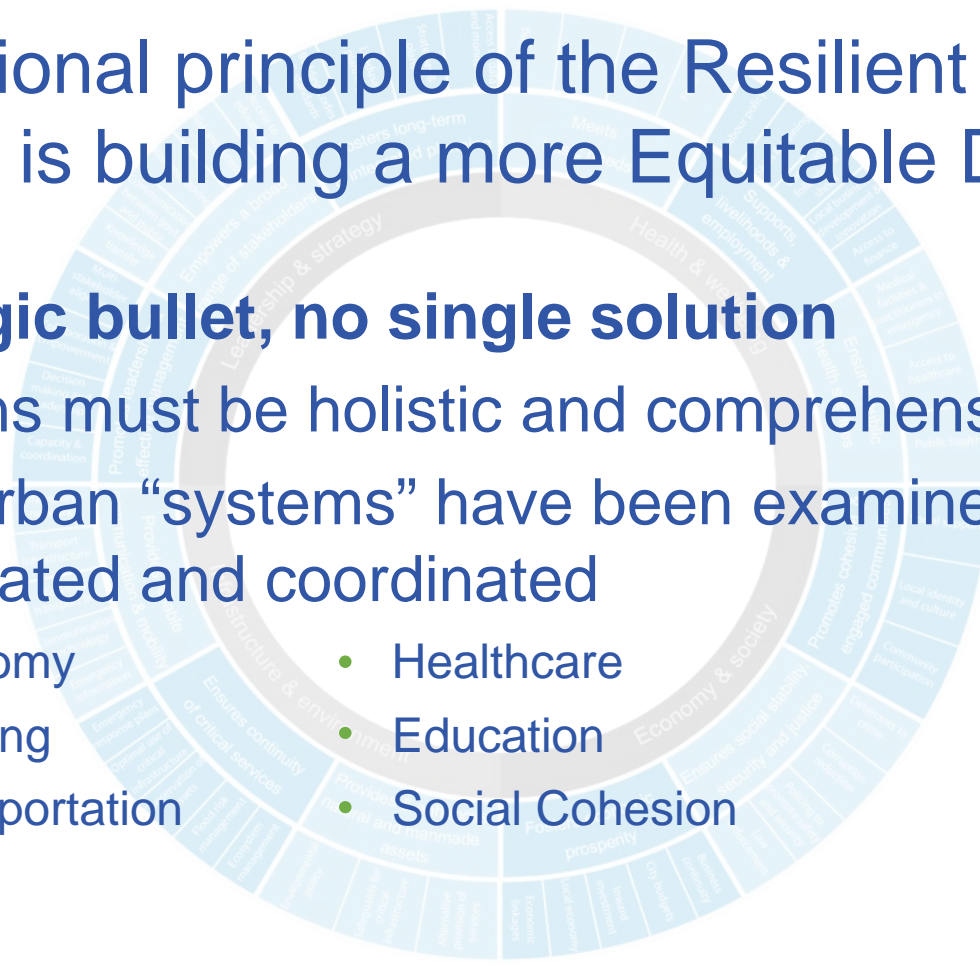
Significant impact of the social and economic stresses on Dallas residents

- Dallas is one of the most segregated cities in the country in terms of race and income.
Pew Research Center, 2015
- Dallas has the highest level of overall neighborhood-by-neighborhood inequality in the United States.
Urban Institute, 2015
- Dallas has the 3rd highest rate of child poverty (30%) of cities in the United States with populations over 1 million. *Census Data*

Building an Equitable Dallas

Foundational principle of the Resilient Dallas Strategy is building a more Equitable Dallas

- **No magic bullet, no single solution**
- Solutions must be holistic and comprehensive
- Major urban “systems” have been examined in an inter-related and coordinated
 - Economy
 - Healthcare
 - Housing
 - Education
 - Transportation
 - Social Cohesion



Four Discovery Areas

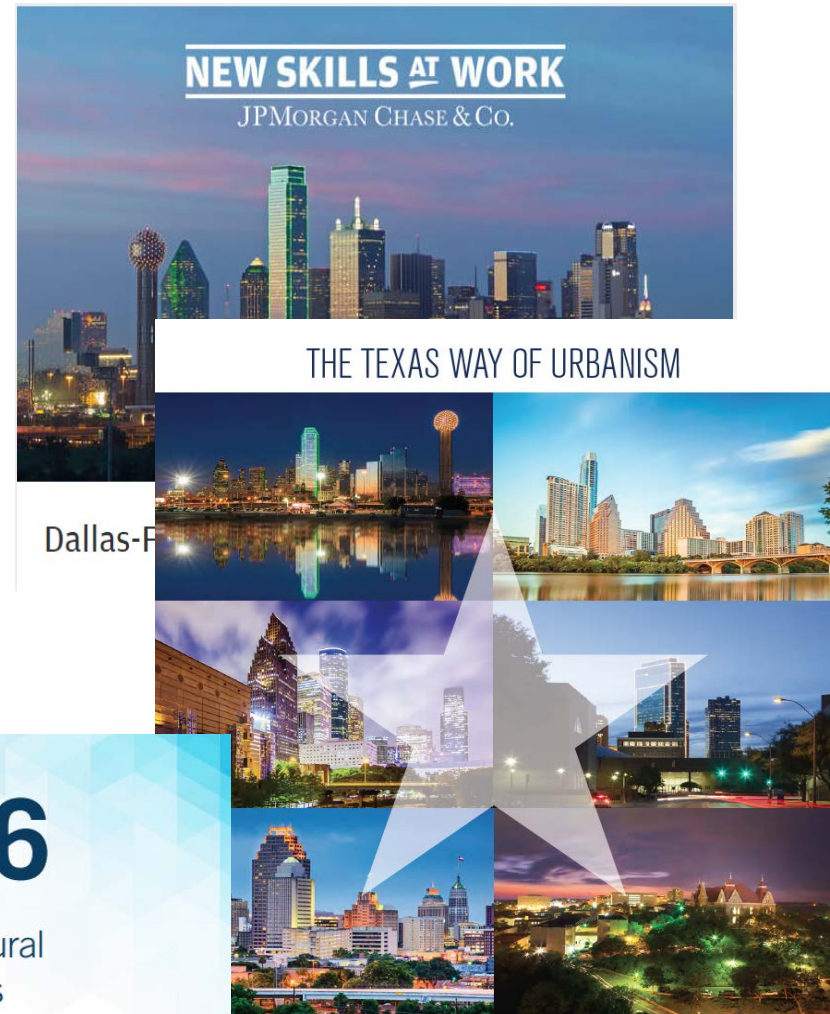
- Harnessing the power of the robust North Central Texas economy to be more inclusive and create economic resilience for Dallas residents
- Exploring opportunities to improve Public Health outcomes and decrease health disparity
- Assessing the conditions in Dallas neighborhoods, and understanding the impacts of climate change on the natural and built environment
- Preparing for a 21st century Urban Mobility by leveraging the region's transportation investment to expand mobility options, and improve transportation equity

Leadership and Work Groups

- **Building an Inclusive Economy**
 - Office of Economic Development and Housing Department
- **Improving Public Health outcomes**
 - Office of Emergency Management and Dallas Fire and Rescue
- **Infrastructure and Climate Change**
 - Public Works, Information Technology, and Office of Environmental Quality
- **Transportation Equity**
 - Transportation Planning, UTA, DART, NCTCOG

Inclusive Economy

- Series of reports published concerning workforce development
- Warn the D-FW residents lack the basic academic and job readiness skills required to be successful in the robust North Central Texas economy



Economy Working Group

City of Dallas, Office of Economic Development	Heather Lepaska
City of Dallas, Office of Economic Development	Karl Zavitkovsky
City of Dallas, Office of Economic Development	Lee McKinney
City of Dallas, Office of Economic Development	Tim Glass
City of Dallas, Office of Economic Development	Venus Cobb
City of Dallas, Planning and Urban Design	Karen Riley
Workforce Solutions Greater Dallas	Laurie Larrea/Betsy Morrison
Dallas County Community College District	Gloria Smith
United Way	Andrea Gilispie
Dallas Independent School District	Richard Grimley/Linda Johnson

Inclusive Economy

- Who are the people in Dallas who are impoverished, disconnected from the traditional labor force, struggling financially, and are most vulnerable to financial/economic risk?
- What is the current state of service provision to vulnerable populations and what are the gaps of service provision?

Partners - Manchester Bidwell, Fourth Economy, AECOM, Staff

Deliverables -

- Community profile and needs assessment
- Statistical analysis of economically vulnerable populations
- Analysis that describes the major factors/socioeconomic characteristics associated with lack of access to mainstream labor market



Inclusive Economy

- What are the barriers and impediments that prevent some Dallas residents from finding and maintaining living wage employment?
- What resources are available to the City and its partners to better provide service to vulnerable populations?

Stakeholders – Staff, Workforce Solutions Greater Dallas, Dallas Community College District, United Way, Dallas Independent School District

Deliverables -

- An analysis of barriers and impediments for vulnerable populations in Dallas
- Workshop with impacted community members to discuss barriers, solutions, and how resources can be leveraged to provide coordinated services and referrals



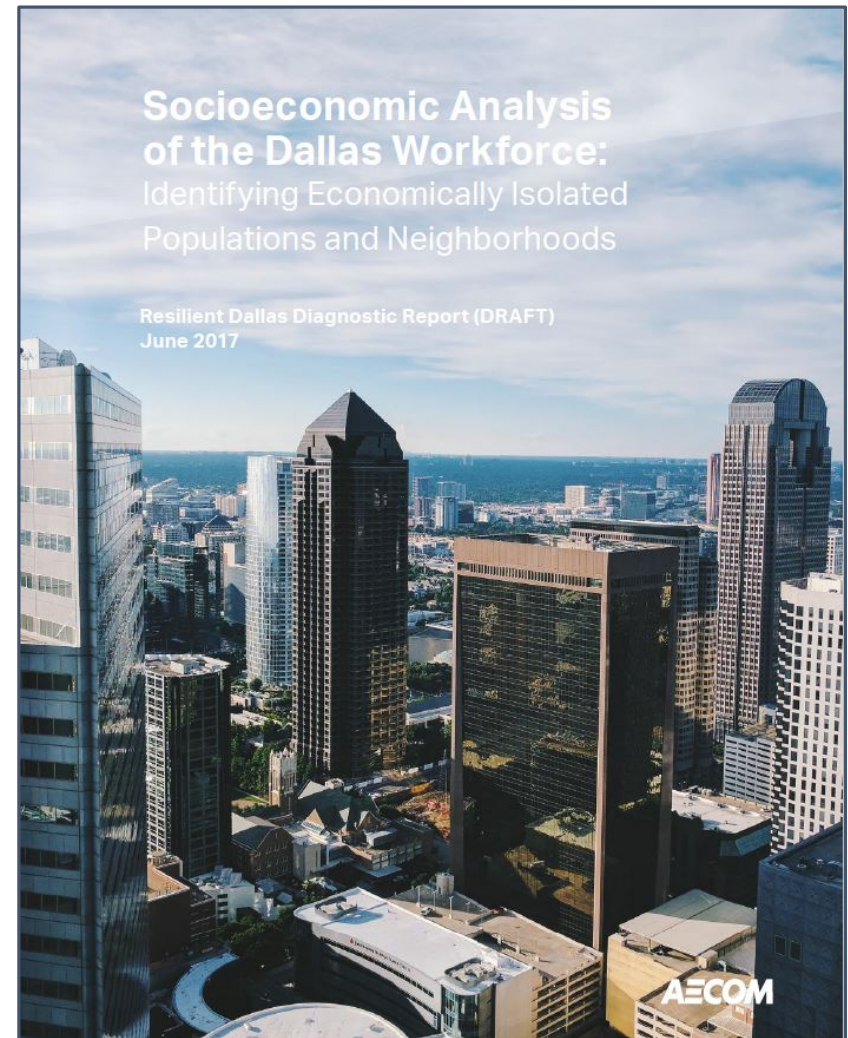
Dallas County
Community College District

WORKFORCESOLUTIONS
GREATER DALLAS



Inclusive Economy

- Who are the people in Dallas who are most disconnected from the traditional labor force?
- Which demographic groups and neighborhoods suffer disproportionately from unemployment and lack of participation in the labor force?



Employed Civilian Population

Education is typically considered the most important determinant of access to labor markets.

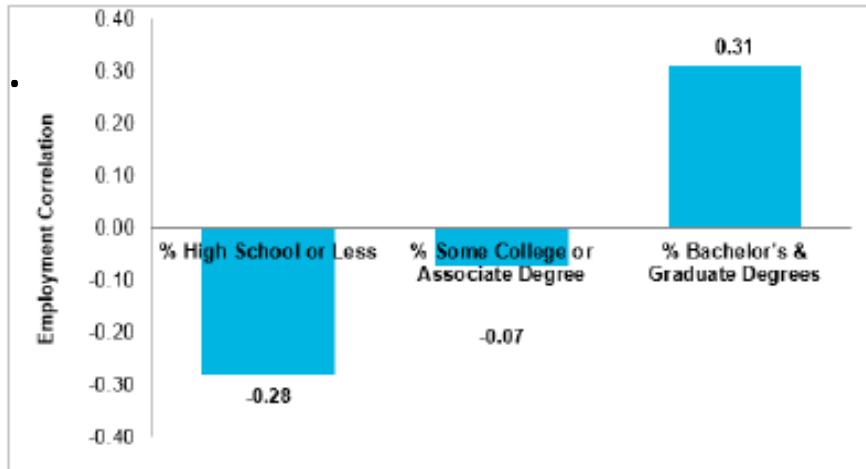
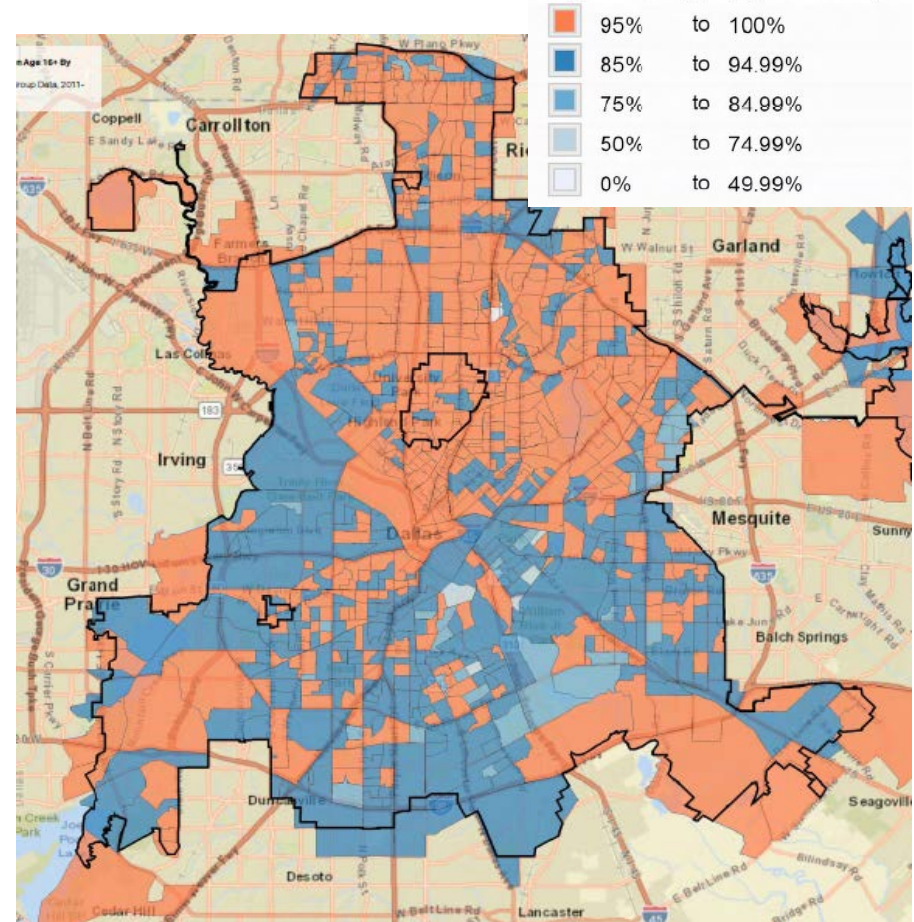
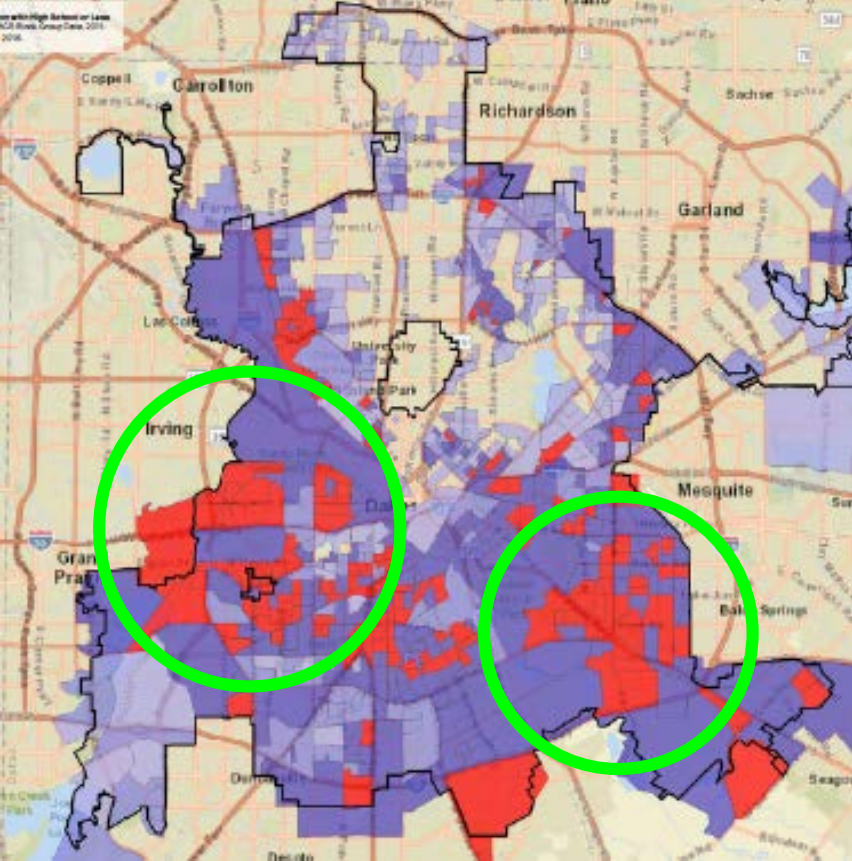


Figure 1: Employment Correlation with Educational Attainment, 2016
Data Source: US Census ACS 2015, ESRI 2016

2016 Employed Civilian Population Age 16+ (Esri) (%) by Block Groups



Population with High School or less

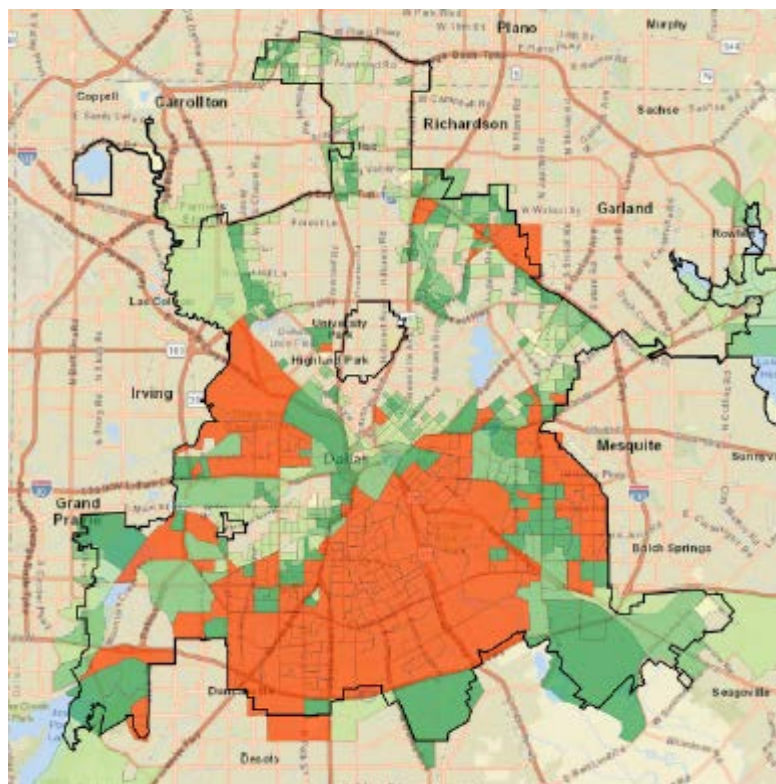


% High School or Less by Block Groups






Red	75	to	100
Dark Blue	55	to	74.9
Medium Blue	35	to	54.9
Light Blue	15	to	34.9
Very Light Blue	0	to	14.9

Neighborhoods with higher percentage of people with low educational attainment also demonstrate lower employment rates

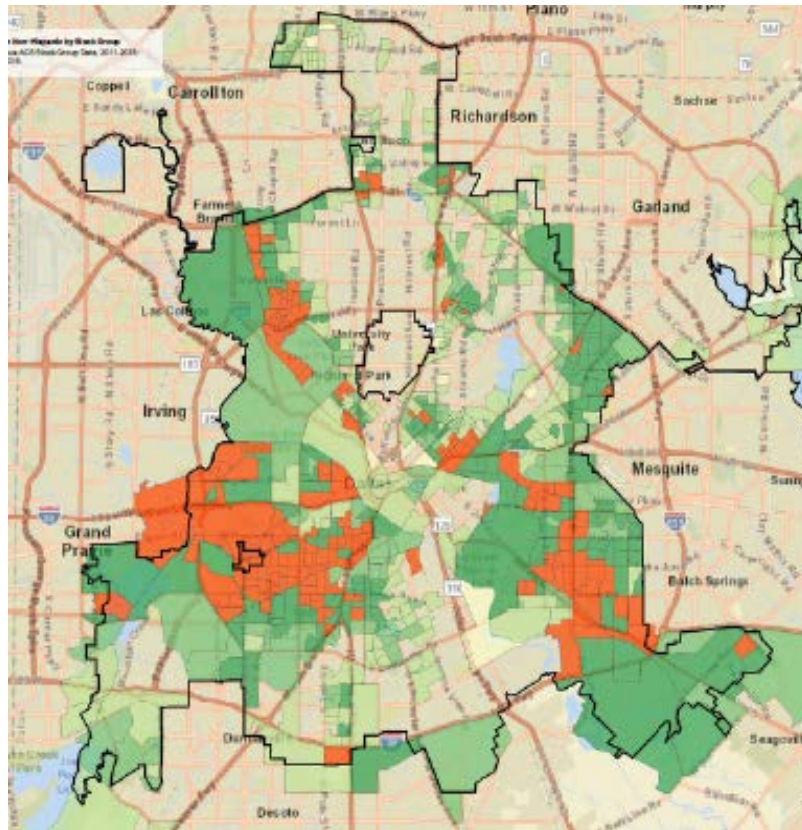
Employment by Race and Ethnicity – African American



2016 Black/African American Non-Hispanic Population (Esri) (%) by Block Groups

	75%	to	99.34%
	50%	to	74.99%
	30%	to	49.99%
	15%	to	29.99%
	0%	to	14.99%

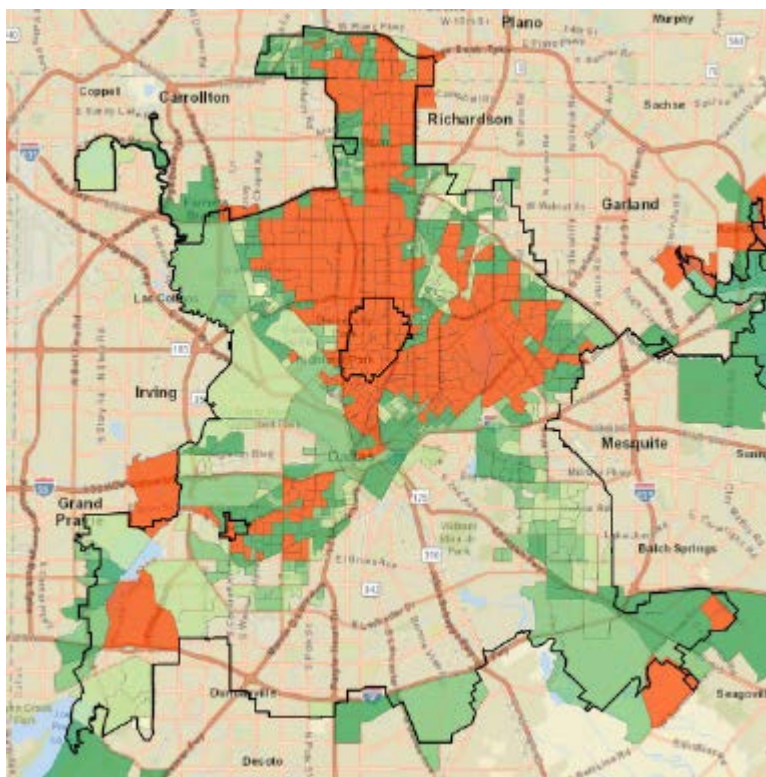
Employment by Race and Ethnicity – Hispanic



2016 Hispanic Population (Esri) (%)
by Block Groups

	75%	to	98.41%
	50%	to	74.99%
	30%	to	49.99%
	15%	to	29.99%
	0.63%	to	14.99%

Employment by Race and Ethnicity – White, Non-Hispanic



2016 White Non-Hispanic
Population (Esri) (%) by Block
Groups

	75%	to	99.21%
	50%	to	74.99%
	30%	to	49.99%
	15%	to	29.99%
	0.14%	to	14.99%

Employment by Household Composition

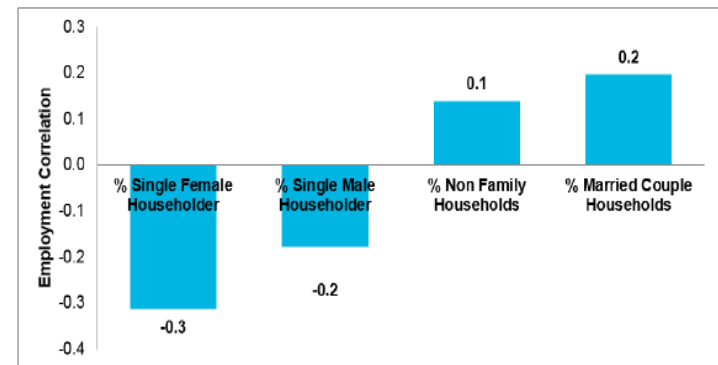
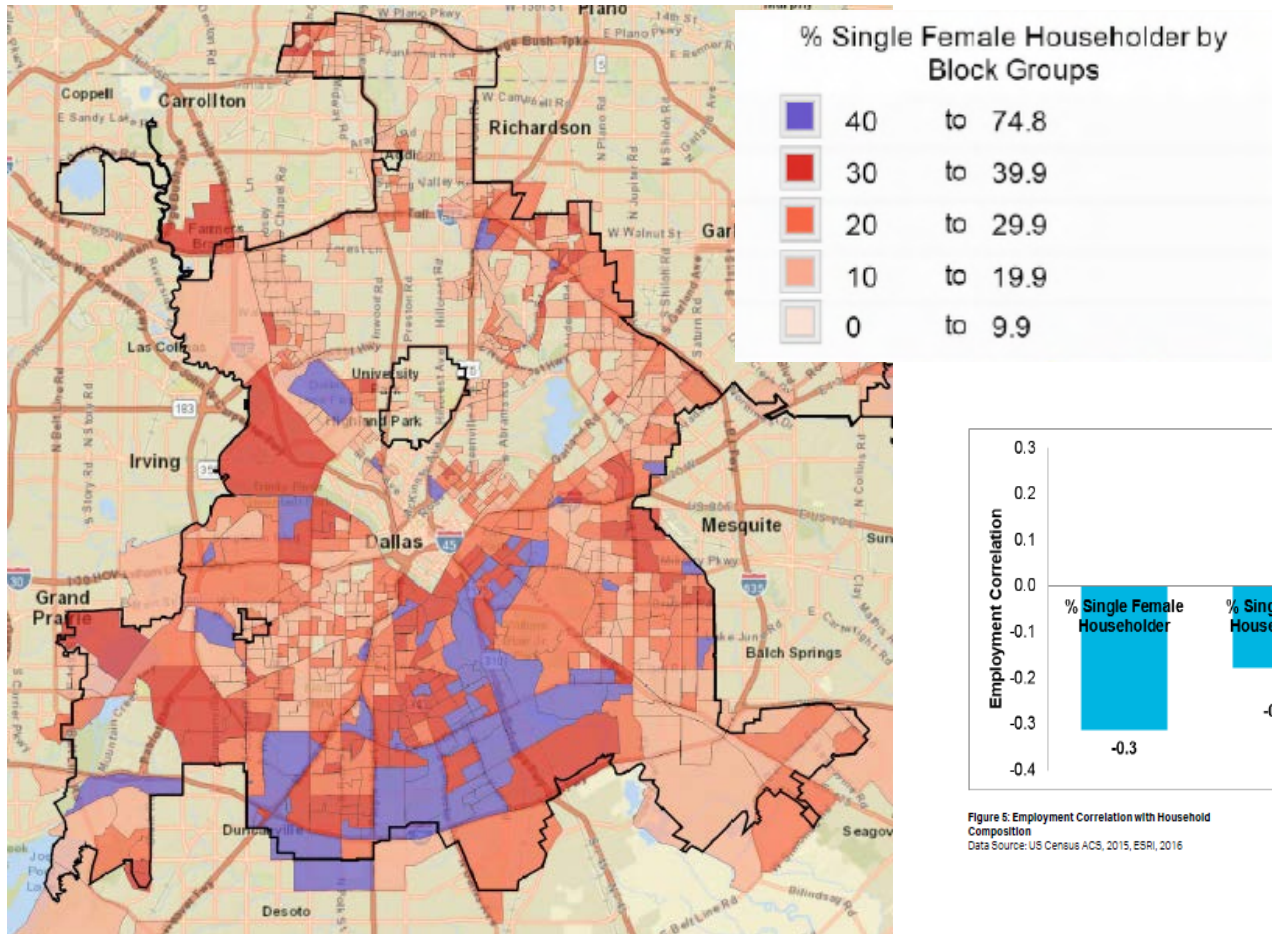
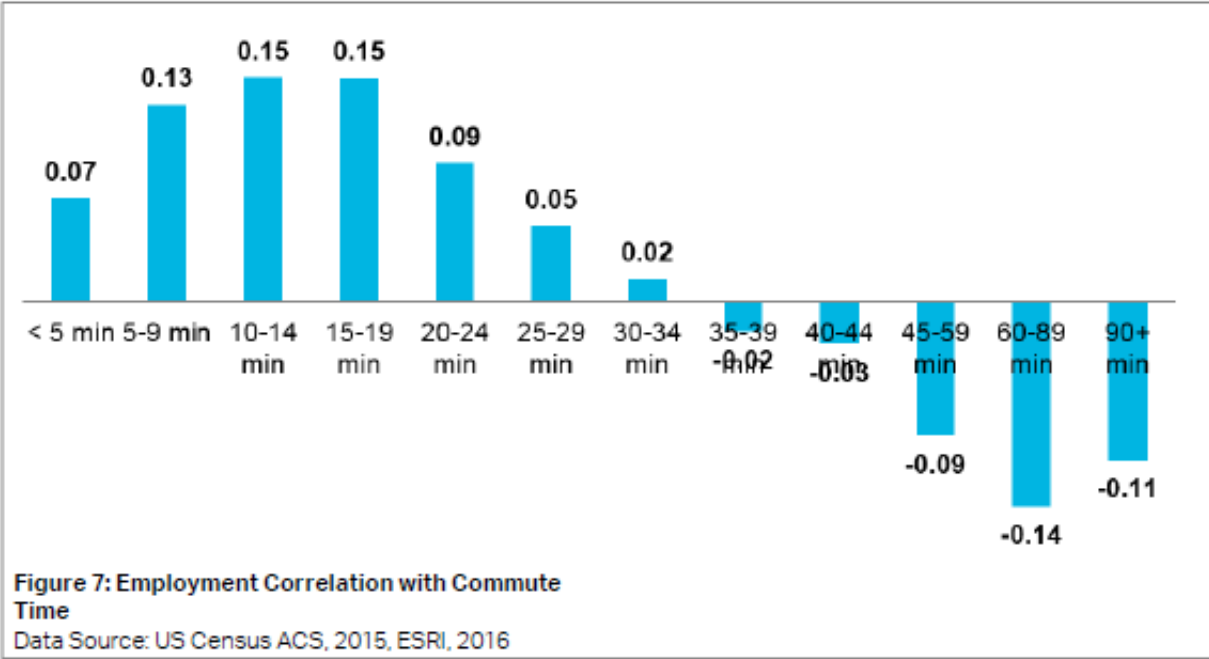


Figure 5: Employment Correlation with Household Composition
 Data Source: US Census ACS, 2015, ESRI, 2016

Employment and Commute Time

- Another key determinant of employment is the distance traveled to work



Inclusive Economy - Findings

- Statistical analysis indicates there are a number of strong barriers to employment on-boarding.
- Although many other groups also face economic challenges, the following are the major socio-economic variables most negatively correlated with employment in Dallas
 - High school education or less
 - African American
 - Single female head of household
 - Commute time of 35 minutes or greater

Inclusive Economy

- Partner with Fourth Economy to explore the specific obstacles to employment faced by the groups identified in the AECOM study
- Fourth Economy Objective:
 - Understand where gaps in services contribute to difficulties in securing and retaining employment among vulnerable populations
 - Understand where services may be available, but a gap exists in either reaching the vulnerable populations that service providers wish to serve, or in organizational capacity to serve the intended populations due to staffing, geographic, or other challenges.



Qualitative analysis timeline

- **Phase 1: Completed**
 - Review all other data produced by AECOM and Manchester Bidwell
(Completed)
- **Phase 2: First-Round Interviews**
 - Fourth Economy and City staff have identified two focus neighborhoods to “ground-truth” existing research on barriers to economic opportunity: **Highland Hills and Family Corridor**. *(Completed)*
 - City Staff will conduct interviews with approximately 20 service providers, community organizations, churches, schools, grassroots leaders, etc.
- **Phase 3: Second-Round Interviews (September – October)**
 - More interviews with organizations identified during Phase 2 will be conducted to ensure the intended audience is being reached

Qualitative analysis timeline

- **Phase 4: Develop Community Engagement Tool** (October- November)
 - Fourth Economy will develop an engagement tool (e.g. survey, interview template focus group facilitation guide, etc.)
 - The tool will be deployed in collaboration with project stakeholders
- **Phase 5: Human-Centered Design Workshop** (December - January)
 - The goal of the design session will be to work with stakeholders to develop solutions to addressing service gaps and challenges reaching populations with barriers to employment
 - Fourth Economy will produce a final memo that summarizes the assessment inputs and provides information on suggested next steps.

Inclusive Economy

Initial recommendations for policies, strategies and partnerships being explored:

Policies/Strategies

- Employee –centric work force development programs
- Middle – skills job training programs
- Financial literacy programs
- Improved mobility to work

Partnerships

- Workforce Solutions
- DCCCD
- DISD
- DART
- Others recommendations from committee

Healthy Communities



Wendy Ellis, Project Director
Building Community Resilience
Milken Institute of Public Health
George Washington University

Milken Institute School
of Public Health

THE GEORGE WASHINGTON UNIVERSITY

Healthy Communities

- What are the economic, physical, social determinants of health that contribute to traumatic environmental stress in Dallas' neighborhoods of concentrated poverty and what are the barriers and impediments that make it difficult for residents to receive adequate health care services?

Partners - George Washington University, Children's Health, Dallas Health and Wellness Alliance, and Health and Human Services

Deliverables -

- Identify systemic barriers and root causes of community and childhood adversity
- Develop community understanding of how adversity creates stressors that become toxic to a child's development and long-term health
- Provide recommendations to address chronic stresses and the inter-relationship with acute shocks



Healthy Communities

- What role can Dallas play to improve public health outcomes and increase health literacy in communities with a high risk of health care disparity?

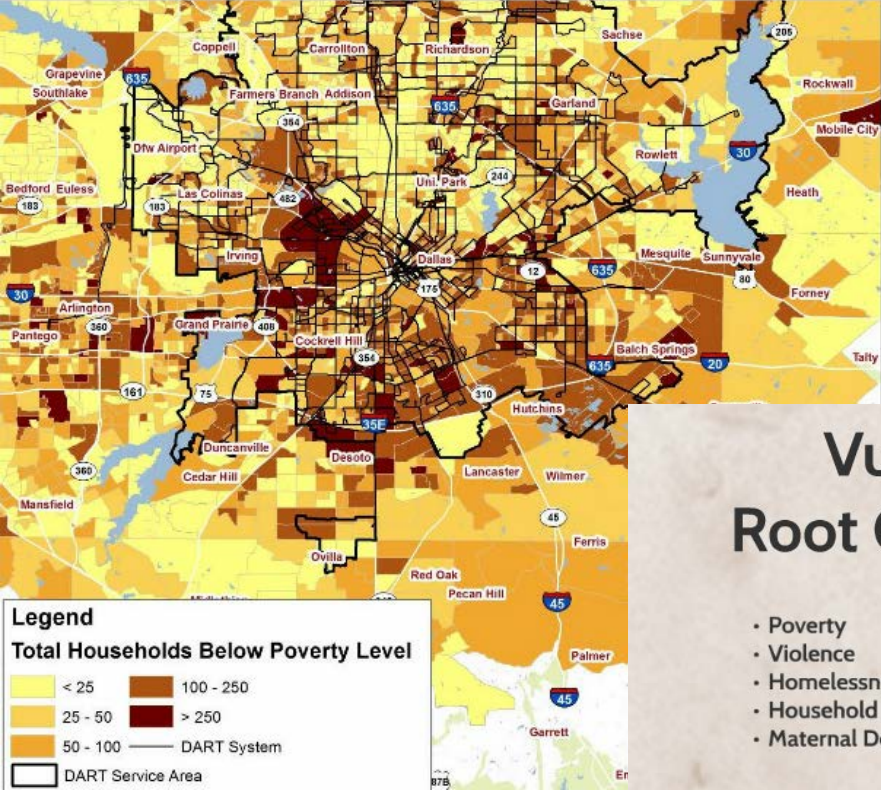
Stakeholders - DFW Hospital Council, Dallas County Medical Society, Dallas County Health, Parkland Hospital, UT Southwestern, NCTTRAC, American Heart Association, American Red Cross, Children's Health

Deliverables -

- Research best practice models and determine which programs, operational strategies, and public education/curriculum models that are the most appropriate and effective for Dallas
- Identify top goals and priorities to make Dallas Fire Rescue a leading edge community paramedicine program



Healthy Communities



Social Determinants of Health and Poverty

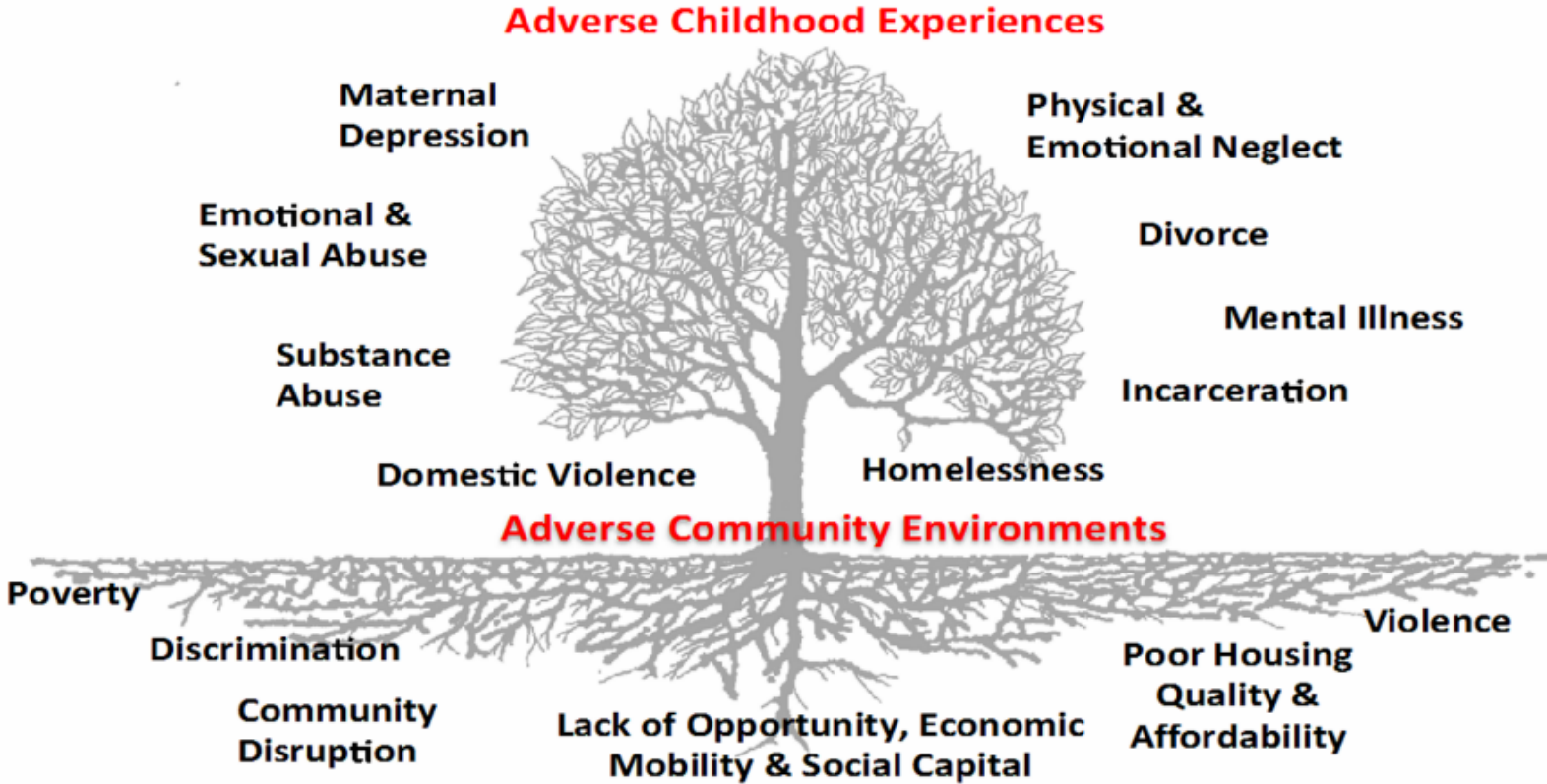
Vulnerability & Adversity: Root Cause of Health Disparities

- Poverty
- Violence
- Homelessness
- Household Instability
- Maternal Depression



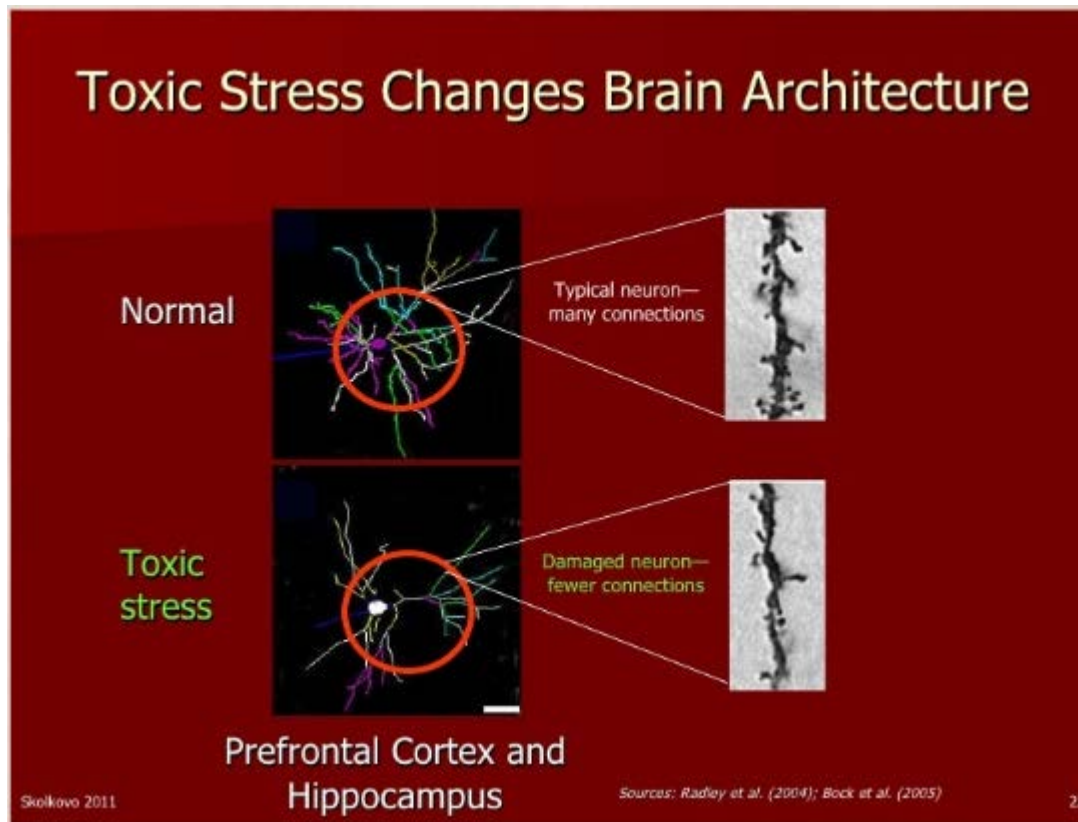
- Depression
- High Blood Pressure
- Alcohol & Drug Abuse
- Diabetes
- Risky Sexual Behaviors
- Obesity

Healthy Communities



Ellis W & Dietz W, A New Framework for Addressing Adverse Childhood and Community Experiences: The Building Community Resilience (BCR) Model, *Academic Pediatrics* (2017).

Healthy Communities



Healthy Communities

Adverse Child or Family Experiences (ACEs) Items	Dallas City	Texas State	National
Extreme economic hardship	35.2%	29.0%	25.7%
Family disorder leading to divorce/separation	20.4%	20.0%	20.1%
Has lived with someone who had an alcohol/drug problem	9.5%	9.8%	10.7%
Has been a victim/witness of neighborhood violence	8.9%	7.3%	8.6%
Has lived with someone who was mentally ill/suicidal	7.7%	8.0%	8.6%
Witnessed domestic violence in the home	8.3%	7.9%	7.3%
Parent served time in jail	7.6%	6.9%	6.9%
Treated or judged unfairly due to race/ethnicity	4.3%	3.6%	4.1%
Death of parent	3.3%	2.6%	3.1%
Child had ≥ 1 ACEs (1/more of above items)	53.5%	48.1%	47.9%

Healthy Communities

Improving Community Health through Collaborative Assessment and Planning

Mary Kate Allee, MPH
Tahlia Gousse, MPH, CHES

Monday, May 22, 2017

NACCHO
National Association of County & City Health Officials

Healthy Communities

Connections Exercise



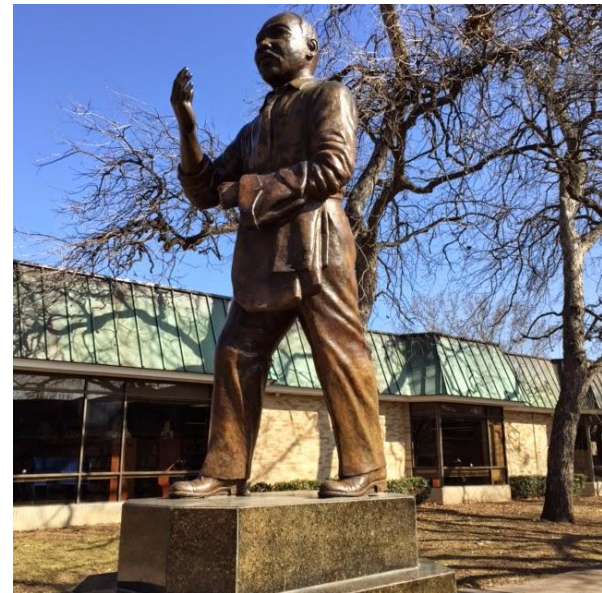
Individual brainstorm on ONE of the following questions:

- What is my agency doing to prevent the emergence of conditions that can lead to adverse community environments?
- What is my agency doing to monitor health, wellness, and resilience? What data are we gathering?
- What is my agency doing to respond to adverse community environments?
- What is my agency doing to prevent or respond to adverse childhood experiences?

Healthy Communities

Explore Dallas' role in addressing the Social Determinants of Health

- Council Committee of Human and Social Needs
- New administration leadership and organization
- Chief of Community Services
- MLK Center and West Dallas



Healthy Communities – Citymart Opportunity Campaign

- 100RC has partnered with Citymart to assist Dallas in moving these objectives forward toward actionable solutions
- An Opportunity Campaign on-line crowdsourcing tool to solicit participation from staff who work in a range of departments and in a variety of roles, and engaging them in identifying distinct opportunities and potential solutions



Healthy Communities – Citymart Opportunity Campaign

- Step 1 - Opportunity Builder App Campaign
 - Engagement campaign using a web application enabling city staff to present problems and ideas for solutions, collate available resources, and specify factors and timeframes required for best results
- Step 2 - Problem-Framing Workshop
 - Citymart will develop a Problem-Framing workshop agenda based on input from campaign. The workshop digs into problem definition and identifies potential opportunities. *Dallas has host two workshops, internally and external partners.
- Step 3 - Opportunity Report
 - Using the outputs from the Opportunity Builder campaign and the Problem-Framing Workshop, Citymart will report the type of solutions available in the market to address selected challenges identified and paths to acquiring those solutions.

Healthy Communities – Citymart Opportunity Campaign

ACTION	DATE
Phase 1: Web app Campaign	
Define Campaign Scope and target audience within the City	Sept. 8 (Completed)
Set up Web App Campaign	Sept. 15
Run Web App Campaign	Sept. 18-29
Phase 2: Problem- Framing Workshop	
Internal Workshop	Sept. 22
Analyze and Select Opportunities submitted	Oct. 6
Preparation Problem Solving Workshop	Sept. 25- Oct. 20
Problem Framing Workshop	Oct. 20
Review Output of Workshop	Oct. 23- Nov. 3
Phase 3: Opportunity report	
Decision Opportunity Report Themes	Nov. 10
Opportunity Reports	Nov. 13- Dec. 15

Healthy Communities – Citymart Opportunity Campaign

- Dallas' specific problem statement is seeking to better understand how the City can:
 - *Strengthen alignment of existing resources and develop new collaborative strategies with measurable improvements in the human and social needs in Dallas*



Healthy Communities

Work of BRC will continue for the next 3 years and we will continue to deepen our understanding of the impact of ACES on Dallas' children

Policies/Strategies

- Expand City's wrap services
- Position City assets (MLK and West Dallas) to offer a targeted compliment of wrap services based on outcomes identified in ACES work

Partnerships

- Hospitals and health care providers
- County
- Private non-profit services providers
- NACCHO

Neighborhood Infrastructure

- How can public sector investment in targeted neighborhoods unlock development potential and new employment opportunities for vulnerable populations?
- How can city and other governmental resources be prioritized and strategically deployed to serve as catalysts for private investment and development?

Partners – Policy Solutions

Deliverables -

- Perform a market value analysis to identify and define neighborhood typologies based on market strength and existing levels of investment.
- Identify intervention strategies for areas of need and catalyst areas.
- Recommended housing and economic development incentive programs, regulatory policies, and models for public-private partnerships



REINVESTMENT
FUND

Neighborhood Infrastructure

- How do extreme weather events affect Dallas' natural resources and critical infrastructure?

Partners - AIR Worldwide, Texas Trees Foundation, The Nature Conservancy American Geophysical Union (AGU), and Trust for Public Lands

Stakeholders – Office of Environmental Quality, Office of Risk Management, Trinity Watershed Management, Dallas Water Utilities, Office of Emergency Management

Deliverables -

- Catastrophe risk modelling - AIR
- Urban Heat Island Study – Texas Trees Foundation
- Accelerating Environmental Health in Dallas – The Nature Conservancy
- Thriving Earth Exchange Science Partnership - AGU
- Smart Growth for Dallas – Trust for Public Lands

Neighborhood Investment Working Group

City of Dallas, Office of Environmental Quality	James McGuire
City of Dallas, Trinity Watershed Management	Sarah Standifer
City of Dallas, Trinity Watershed Management	Susan Alvarez
City of Dallas, Dallas Water Utilities	Dennis Qualls
City of Dallas, Dallas Water Utilities	Randall Payton
City of Dallas, Sustainable Development and Construction	Lloyd Denman
City of Dallas, Office of Risk Management	Zeronda Smith
City of Dallas, Office of Emergency Management	Kevin Oden
City of Dallas, Equipment and Building Services	David Trevino
The Nature Conservancy	Kathy Jack/ Chloe Liberknecht
Texas Trees Foundation	Matt Grubisich
Trust for Public Land	Robert Kent
North Central Texas Council of Governments	Chris Klaus

Neighborhood Infrastructure

Web-based portal for GIS mapping analysis

Build upon the Market Value Analysis by layering on data sets that factor in demographic/economic information, social determinants of health, transportation infrastructure and other datasets

Vulnerable populations Demographics Socio-economic data Jobs and income	Infrastructure in disinvested neighborhoods Street conditions Sub-standard water, sewer, sidewalks, street lights Flood plain, drainage and storm sewers
Health/risk factors Availability of health services Food deserts – healthy food and pharmacies Incidence of chronic disease Parks and open space EMS runs	Transportation/Mobility Public transit – routes, frequency, timing Asset mapping of services Libraries, rec centers, churches, non-profit and philanthropic services

Neighborhood/Green Infrastructure

Partner Leadership:

- The Nature Conservancy is leading a partnership of key stakeholders to examine our environmental health
- AIR Worldwide has provided a catastrophic risk model report that outlines the fiscal impacts of Dallas' most catastrophic risks and provides recommendations for actions to mitigate loss
- Texas Trees has recently finished an Urban Heat Island Study with the Urban Climate Lab of the Georgia Institute of Technology
- Trust for Public Lands Smart Growth Dallas uses science and community engagement to identify green infrastructure assets that could be developed for park/open space or other natural resources purposes



Neighborhood/Green Infrastructure

Building upon the work of our partners:

- Sandia Labs has initiated a Southern Consortium made up of cities, electric utilities, regulators, and vendors to discuss the resilience of the electrical grid in Texas
- Thriving Earth Exchange has agreed to perform an internal assessment to determine what research and data are needed to complete a Climate Action Plan for the City
- Under the leadership of our Mayor, the City of Dallas has joined the Mayors National Climate Action Agenda.
 - 377 Mayors, representing 67.7 million Americans, have committed to uphold the Paris Climate Agreement goals.



Green Infrastructure

AGU will complete internal assessment by the end of the year. The Nature Conservancy will perform an external assessment within the same timeframe

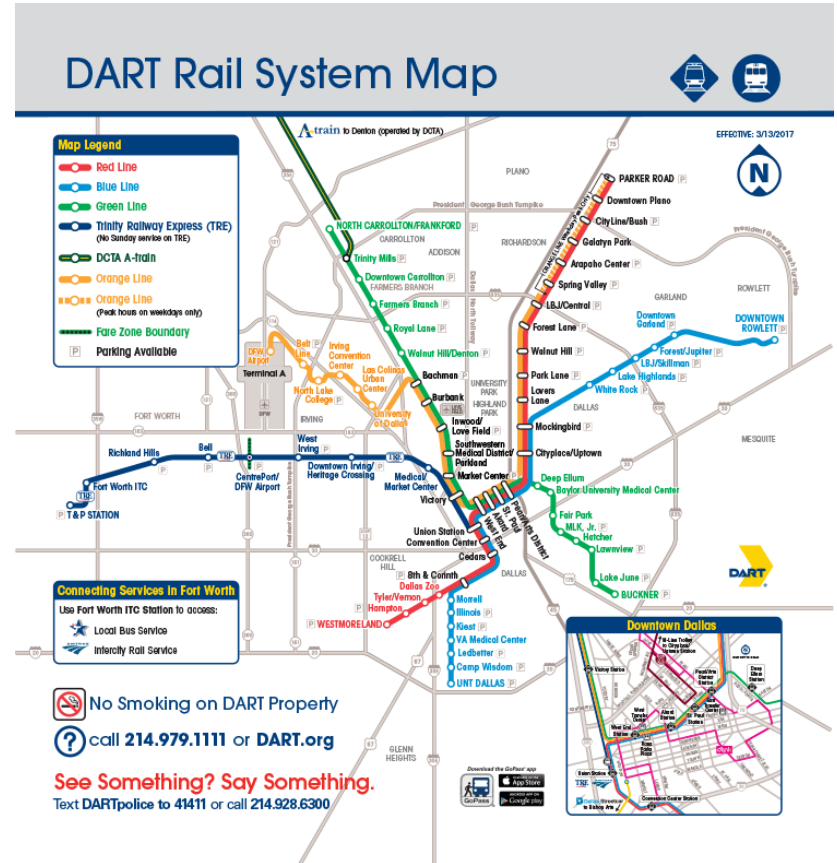
Strategies

- Assess existing data and projects to improve environmental quality citywide
- Prioritize city- and partner-led projects based on environmental and social outcomes.

Partnerships

- Texas Trees Foundation
- The Trust for Public Lands
- The Nature Conservancy
- Sierra Club
- Other environmentally-focused advocacy group

Transportation Equity



Transportation Equity

- What is the current state of transportation equity for Dallas residents?
- What projects or policies could Dallas' transit providers implement to provide transit dependent populations with improved access to employment, education, healthcare and basic retail services while also balancing the need to attract new riders?
- **Partners** - University of Texas at Arlington, AECOM, Staff
- **Stakeholders** - UTA, Dallas Area Rapid Transit, North Central Texas Council of Governments, Brunk Government Relations Services.
- **Deliverables** -
 - Comprehensive policy analysis and quantitative study of transportation metrics including; transportation affordability, job accessibility by mode, transit coverage, transit quality, and accessibility
 - Prioritized list of recommendations to improve bus coverage and accessibility to vulnerable populations and strategies for solving last mile transportation issues

Transportation Equity Working Group

City of Dallas, Planning and Urban Design	Monique Ward
City of Dallas, Mobility Planning	Chelsea St. Louis
City of Dallas, Mobility Planning	Tanya Brooks
AECOM	Steven Duong
University of Texas at Arlington	Dr. Shima Hamidi
Brunk Government Relations Services	John Brunk
Dallas Area Rapid Transit (DART)	Todd Plesko
North Central Texas Council of Governments	Thomas Bamonte
Deshazo Group	Ross Kahn

Transit - dependent rider focus group has also been convened but requested anonymity.

Transportation Equity

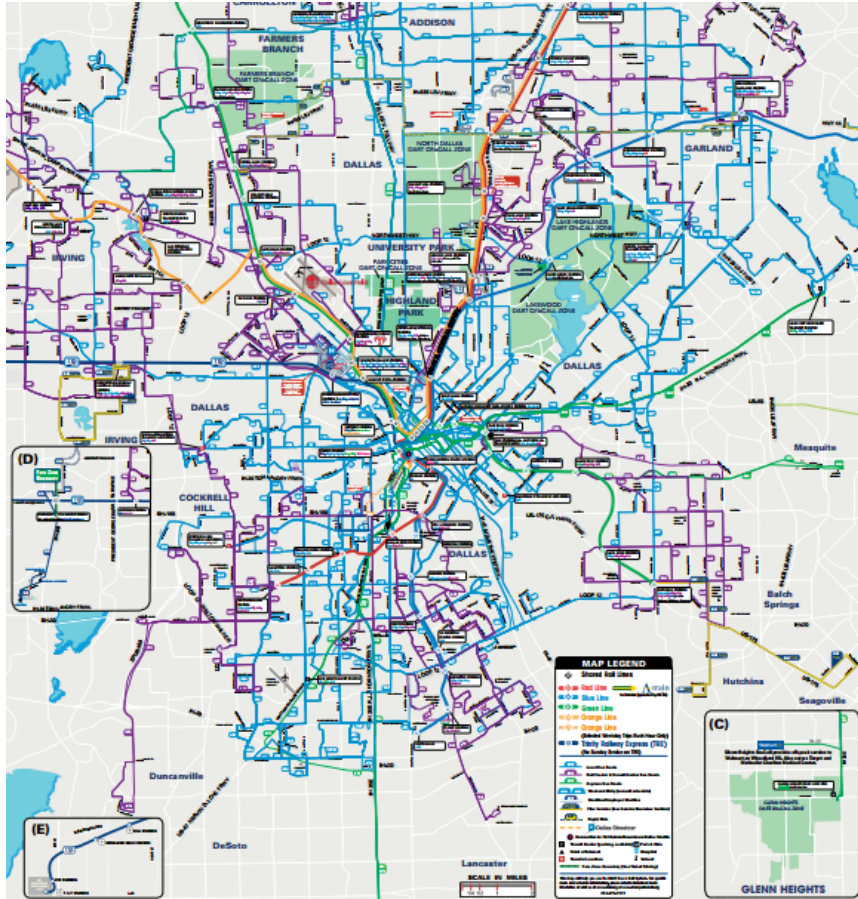
- Understand how Dallas can leverage transportation investment to strengthen access to economic opportunities and improve the quality of life in low and moderate-income neighborhoods.



UNIVERSITY OF
TEXAS
ARLINGTON



Transportation Equity



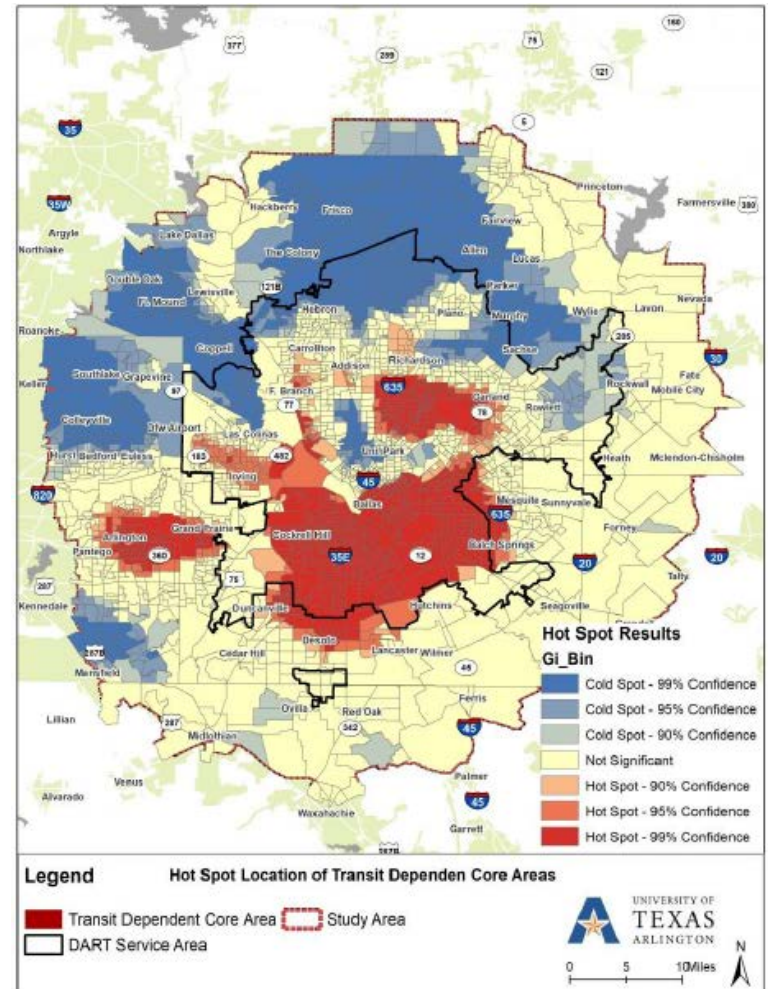
DART service area

- 13 member cities
- 2.4 million population
- 1.6 million jobs
- Longest light rail system in North America
- 700 square mile service area.
- 652 buses with almost 12K bus stops
- 220,000 passengers per day

Transportation Equity

Who are the transit dependent residents in Dallas and where do they live?

- Elderly
- Young
- Low income persons
- Households without a vehicle



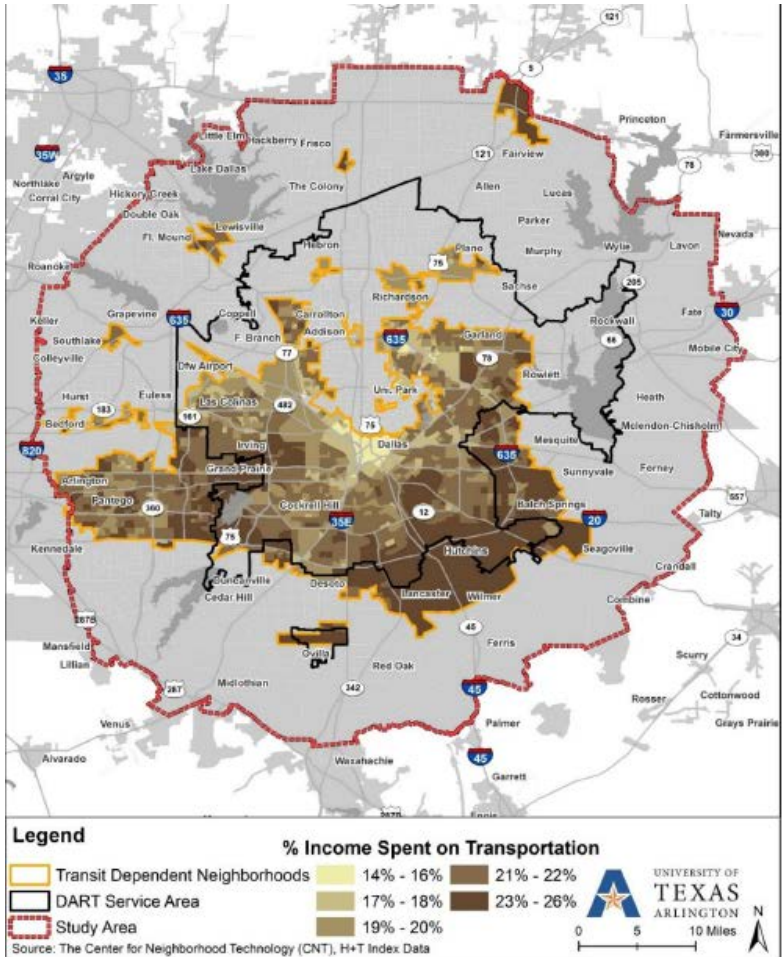
Transportation Equity

How much do people spend on transportation?

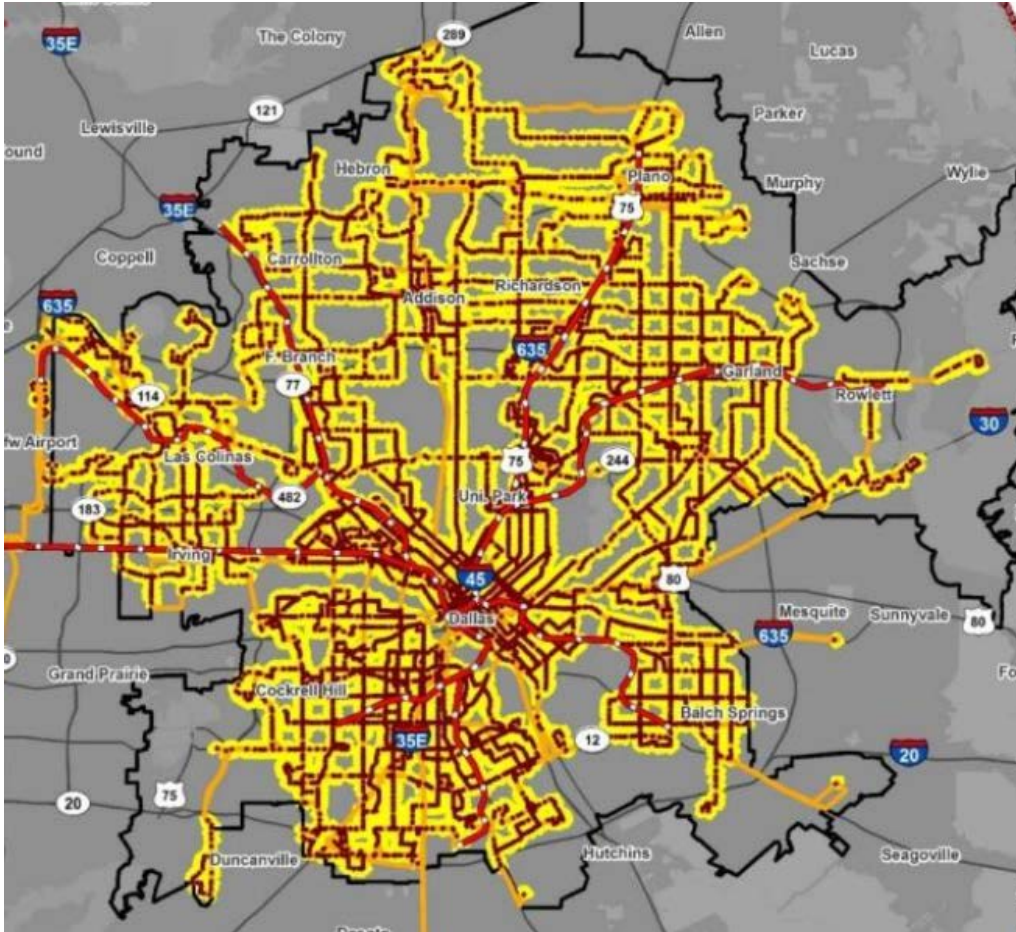
US	15%*
Dallas	19%*
Within DART area	20%*
Transit dependent	20-26%*

*Percent of annual household income

DART current transit fare is approx. 10% of annual income for low income households



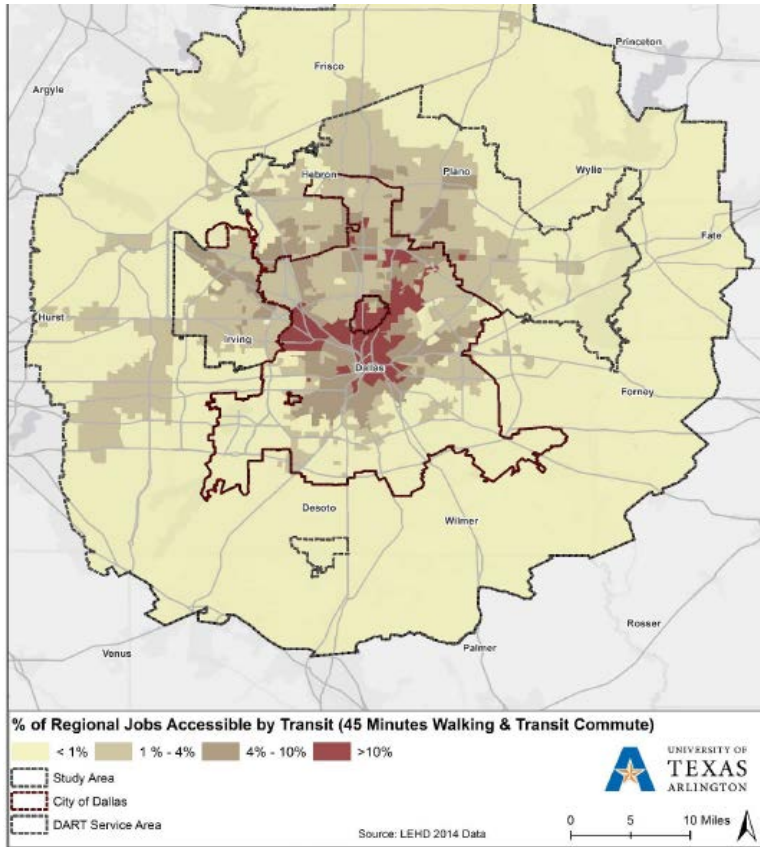
Transportation Equity



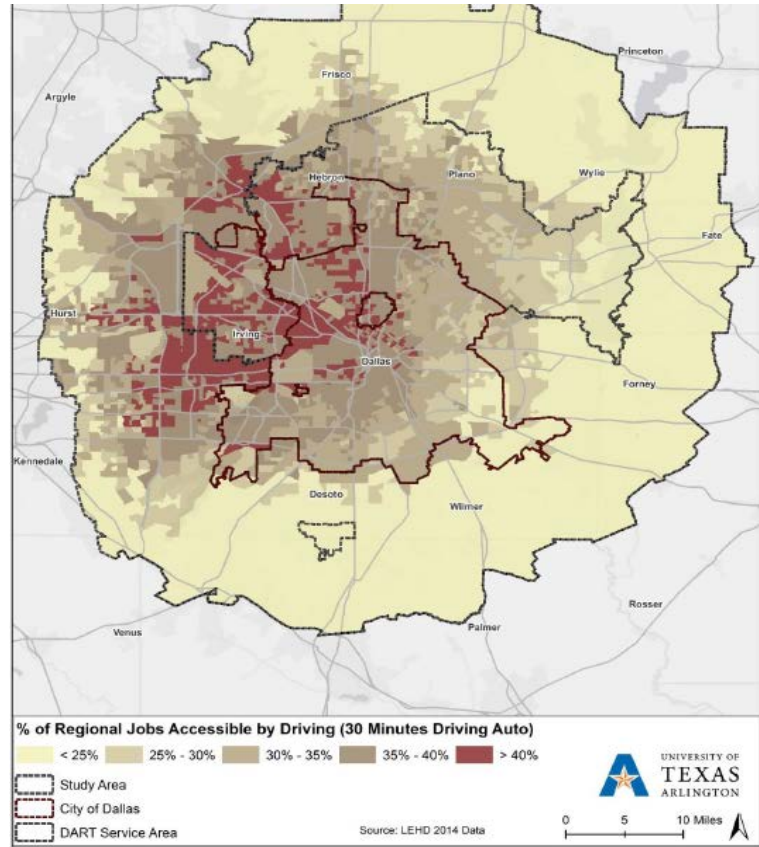
Study is examining many factors to explain low ridership

- Spatial distribution of transit coverage
- Time and frequency of service
- Access to regional jobs

Transportation Equity



Access to regional jobs within 45 minute transit time



Access to regional jobs within 30 minute drive time

Transportation Equity

Study should be finalized within the next few days and will be presented to the MSIS Committee on October 23, 2013.

Policy recommendations for both DART and the City

DART

- More efficiency out of system
- Improved frequency and timing for off-peak workers
- Last mile/first mile solutions
- Mobility on demand pilots
- Transit amenities and facilities condition
- Contracting with non-member cities for Dallas residents to access jobs

Dallas

- Transportation/Mobility Plan
- Consider transit when granting Economic Development and Housing projects and programs
- Infrastructure investments that support transit (sidewalks)
- Utilize TIF/PIDs to encourage employment center shuttles for first mile/last mile solutions

Additional Efforts

- Office of Welcoming Communities and Immigrant Affairs
- Equity Indicators project
 - Truth, Racial Healing and Transformation
 - Dallas 365

The City's New Office of Welcoming Communities and Immigrant Affairs (WCIA)

- Established in March 2017
- To promote the economic, civic, and social engagement of immigrants and refugees residing in Dallas.
- WCIA aspires to be a bridge connecting Dallas' diverse immigrant community with existing Dallas residents so that common ground and shared leadership can be realized.



Immigration Population of Texas

- Houston – 32.5%
- **Dallas – 19.6%**
- Fort Worth-Arlington – 7.4%
- Austin-Round Rock - 6.3%
- San Antonio -6.2%
- McAllen-Edinburg-Mission – 5.4%
- El Paso – 5.0%
- Other – 17.4%



Developing a Strategy

- The Office of Resilience and WCIA are collaborating to develop a comprehensive city strategy for immigration reception and integration to fill policy and funding gaps from the federal government.
- Partnering with Welcoming America, a 100RC Platform Partner, that provides consultancy support for local leaders in developing and implementing a multi-sector plan to become inclusive, welcoming places for immigrants and all residents.
- These plans conform to a certification program that evaluates and recognizes achievement of standardized benchmarks for competitive advantage.



Dallas Equity Indicators

Equity Indicators Project is funded by the Rockefeller Foundation

- City University of New York, Institute for State and Local Government
- Initial effort with the City of New York
- In 2017, CUNY received funding to develop five additional cities
 - Dallas
 - Oakland
 - Pittsburgh
 - St. Louis
 - Tulsa



The
**ROCKEFELLER
FOUNDATION**

Dallas Equity Indicators

- Goal: To design a framework of indicators to measure progress towards achieving greater equity in Dallas over time
 - Policy tool that can be used by communities, government agencies, researchers, and policy groups
 - Use same methodology as NYC, but working to create tailored tools for each local jurisdiction
- Focus:
 - People who experience inequities?
 - In what areas do they experience inequity?
 - What is the current state of equity in these areas?
 - (Future) Has the state of equity changed?

Dallas Equity Indicators

Background: NYC Equality Indicators

Four levels

1 Framework

(6 themes)

6 Themes

(4 topics per theme)

24 Topics

(4 indicators per topic)

96 Individual Indicators



Dallas Equity Indicators

Groups to consider when measuring equity

1. Children under 18
2. Immigrants
3. Individuals currently in jail or on probation
4. Individuals living in poverty
5. Individuals with a physical or intellectual disability
6. Individuals with less than a high school diploma
7. Lesbian, gay, bisexual, and transgender individuals (LGBT)
8. People of color and ethnic minorities
9. Religious minorities
10. Seniors 65 and older
11. Single parents
12. Women

Note: although these groups could be represented by specific indicators, they may not necessarily be experiencing inequity.

Dallas Equity Indicators

1. Administrative data

Data maintained by government agencies, nonprofit organizations, and research and academic institutions

2. Secondary public survey data

Annual public surveys currently conducted by government agencies and other organizations

3. ISLG public survey data

A survey of 3,000+ NYC residents age 18 and older

Dallas Equity Indicators

ECONOMY

- Employment
- Income & Jobs
- Poverty
- Business Development

EX: Unemployment rate, labor force participation rate, median income, living wage jobs, job growth, poverty rate, food insecurity, business ownership, contracts and procurement

EDUCATION

- Early Childhood Education
- Elementary & Middle School Education
- High School Education
- Higher Education

EX: Preschool enrollment, kindergarten readiness, 3rd grade reading proficiency, chronic absenteeism, suspension rates, graduation rates, degree attainment, job placement

PUBLIC HEALTH

- Child Health
- Mortality
- Access to Preventive Care
- Physical & Mental Health

EX: Childhood asthma rates, infant mortality, life expectancy, premature death rate, access to primary care provider, communicable disease rates, mental health and substance use

HOUSING

- Affordability
- Displacement
- Housing Quality
- Neighborhood

EX: Severe housing cost burden, homeownership, eviction, homelessness, building code violations, overcrowding, building vacancies, shooting or homicide rates

Dallas Equity Indicators

CRIMINAL JUSTICE

- Policing
- Victimization
- Incarceration
- Juvenile Justice

EX: Stops or arrests, use of force, violent victimization, domestic violence, human trafficking, jail admissions, length of stay, juvenile arrests, juvenile alternatives to incarceration

GOVERNMENT

- Transparency & Accountability
- Access to Services
- Transportation
- Budget

EX: Trust in government, public records requests response rates, equitable delivery of essential services, access to public transit, equitable allocation of City funds

ENVIRONMENT

- Disaster Preparedness
- Environmental Health Risks
- Parks & Open Space
- Water

EX: Sea level rise, heat island effects, blood lead levels, air quality, access to green space, green infrastructure, access to running water, problems with hot water

Dallas Equity Indicators

Timeline

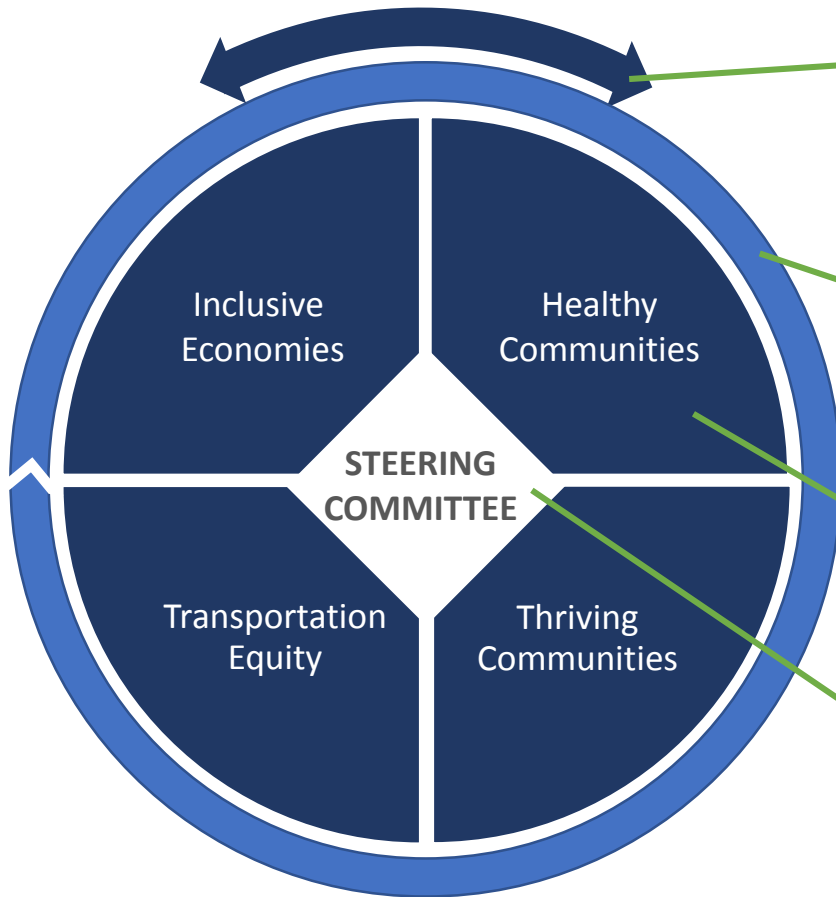
- September-October: Solicit feedback and finalize framework
- October-November: Collect data
- November-December: Analyze data and draft report
- Early 2018 (TBD): Release findings
- Findings released annually thereafter

Partners

- Communities Foundation of Texas
- University of Texas at Dallas and SMU
- Truth, Racial Healing and Transformation



Participation and Input



Citizen Advisory Committee

Chaired by Regina Montoya
15+ Members
Review and sounding board for strategy

Community Stakeholder Committee

Convened by Theresa O'Donnell
120+ Members
Informed and Validated Discovery Areas

Discovery Area Working Groups

Led by City Departments
6-10 Members from City and Community
Researches and analyzes each discovery area

Steering Committee

Chaired by Theresa O'Donnell
Working Group Leads
Ensures synergy of working groups

Citizens Advisory Committee

NAME	ORGANIZATION
Regina Montoya	Mayor's Task Force on Poverty
Dr. Baranda Fermin	Faith in Texas
Michelle Kinder	Momentous Institute
Duane Dankesreiter	Dallas Chamber
Timothy M. Bray, Ph	University of Texas at Dallas, Institute for Urban Policy Research
Reverend Richie Butler	St. Paul United Methodist Church
Teresa Jackson	Sharing Life
Mirjam Kirk	Family Gateway
Cyndy Lutz	Dallas Area Habitat for Humanity
Leonor Marquez	Los Barrios Unidos Community Clinic
Miguel Solis	Dallas Independent School District
Susan Hoff	United Way of Metropolitan Dallas
Elizabeth Sobel Blum	Federal Reserve Bank of Dallas
Eva Szalkai Csaky, PhD MSF	Southern Methodist University, Hunt Institute for Engineering & Humanity
Michael Gagne	Information Builders
Lynda Ender	Senior Source
Cortney M. Nicolato	Senior Source, CEO
Javier E. Olguin, Ph.D.	Dallas County Community College District

Next Steps and Questions

- Finalize recommendations and return to committee in November 2017

100 Resilient Cities Update

Human and Social Needs Committee

October 16, 2017

Theresa O'Donnell,
Chief Resilience Officer
City of Dallas



Memorandum



CITY OF DALLAS

DATE October 11, 2017

Honorable Members of the Human and Social Needs Committee:
TO Councilmember Casey Thomas, II (Chair), Deputy Mayor Pro Tem Adam Medrano,
(Vice Chair), Mayor Pro Tem Dwaine R. Caraway, Councilmember Omar Narvaez,
Councilmember Mark Clayton, Councilmember B. Adam McGough

SUBJECT **Vital Statistics Departmental Transfer**

On Monday, October 16, 2017 you will be briefed on the departmental transfer of Vital Statistics from the Dallas Water Utilities Department to the Office of Community Care (OCC). The transfer of Vital Statistics services to OCC creates a central point of contact for the community to connect with a department within the City who provides direct services to the community. This transfer will also provide an opportunity to strengthen the alignment of existing resources to meet the human and social needs in Dallas.

Prior Action

On September 20, 2017, City Council authorized an ordinance appropriating funds for fiscal year 2017-18 for the maintenance and operation of various departments; authorizing the city manager to make adjustments; appropriating fund for public improvements to be financed from bond funds and other revenues of the City of Dallas for Fiscal Year 2017-18; providing for publication; and providing an effective date by Resolution No. 17-1505.

Please contact me if you have any questions or need additional information.

A handwritten signature in blue ink, appearing to read 'Nadia'.

Nadia Chandler-Hardy
Chief of Community Services

c: Honorable Mayor and Members of City Council
T.C. Broadnax, City Manager
Larry Casto, City Attorney
Craig D. Kinton, City Auditor
Billerae Johnson, City Secretary (Interim)
Daniel F. Solis, Administrative Judge
Kimberly Bizer Tolbert, Chief of Staff to the City Manager
Majed A. Al-Ghafry, Assistant City Manager

Jo M. (Jody) Puckett, Assistant City Manager (Interim)
Jon Fortune, Assistant City Manager
Joey Zapata, Assistant City Manager
M. Elizabeth Reich, Chief Financial Officer
Raquel Favela, Chief of Economic Development & Neighborhood Services
Theresa O'Donnell, Chief of Resilience
Directors and Assistant Directors

Upcoming City Council Action Item(s)

- A. *Draft* Agenda Item: An ordinance transferring the functions of supervising and administering Vital Statistics, from Water Utilities Department to the Office of Management Services, performance of other duties may be required by the City Manager or by ordinance of the City Council – Financing: No cost consideration to the City (**city-wide**)

Memorandum



CITY OF DALLAS

DATE October 11, 2017

Honorable Members of the Human and Social Needs Committee:
TO Councilmember Casey Thomas, II (Chair), Deputy Mayor Pro Tem Adam Medrano
(Vice Chair), Mayor Pro Tem Dwaine R. Caraway, Councilmember Omar Narvaez,
Councilmember Mark Clayton, Councilmember B. Adam McGough

SUBJECT **Follow-Up Homeless Responses**

On Monday, October 16, 2017, we will provide follow-up responses to the questions asked by the committee regarding the homeless briefings on October 2, 2017. These responses are attached for your review.

Please contact me if you have any questions or need additional information.

A handwritten signature in blue ink, appearing to read 'Nadia'.

Nadia Chandler-Hardy
Chief of Community Services

[Attachment]

- c: Honorable Mayor and Members of City Council
T.C. Broadnax, City Manager
Larry Casto, City Attorney
Craig D. Kinton, City Auditor
Billerae Johnson, City Secretary (Interim)
Daniel F. Solis, Administrative Judge
Kimberly Bizer Tolbert, Chief of Staff to the City Manager
Majed A. Al-Ghafry, Assistant City Manager
- Jo M. (Jody) Puckett, Assistant City Manager (Interim)
Jon Fortune, Assistant City Manager
Joey Zapata, Assistant City Manager
M. Elizabeth Reich, Chief Financial Officer
Raquel Favela, Chief of Economic Development & Neighborhood Services
Theresa O'Donnell, Chief of Resilience
Directors and Assistant Directors

Questions/recommendations and responses regarding the homeless briefings presented at the Human and Social Needs Committee on October 2, 2017

1. Please provide a list of all the emergency shelters using HMIS.

Organization Name	HMIS Utilization
Austin Street Center	All programs
Dallas Life	A few programs
Family Gateway	All programs
Family Place	All programs
Promise House	All programs
Salvation Army	All programs
Shared Housing	All programs
The Bridge North Texas	All programs
Union Gospel Mission	Only the VA programs

2. Please provide an update on when the City will reintroduce the last permanent residence on the Point in Time Count Survey.

MDHA plans to have HMIS updated to include last permanent residence by the next Point in Time Count (January 25, 2018).

Human & Social Needs Committee - FY2018 Agenda Forecast

Date	Briefing(s)	Presenter
November 6, 2017	Homeless Management Information System Overview	Charletra Sharp, Interim Managing Director Office of Homeless Solutions
	Bridge Updates/Contract Approval (Nov. 8)	Charletra Sharp, Interim Managing Director Office of Homeless Solutions Dr. Woody, CEO Bridge Steps
December 4, 2017	Workforce Development	Raquel Favela, Chief of Economic Development & Neighborhood Services Laurie Larrea, President Workforce Soltuions Greater Dallas
Future Agendas: 2018	Adult Literacy	
	Education Taskforce Briefing	
	Equity in Service Delivery	
	Proposition J: Homeless Assistance Facilities Briefing	