

Memorandum



DATE: January 6, 2017

TO: Honorable Members of the Public Safety Committee:
Adam Medrano (Chair), B. Adam McGough (Vice Chair), Sandy Greyson, Tiffinni A. Young,
Jennifer S. Gates, Philip T. Kingston

SUBJECT: **2016 Crime Summary**

On Monday, January 9, 2017, you will be briefed on the Dallas Police Department's 2016 Crime Summary by Interim Police Chief David Pughes. The briefing materials are attached for your review.

Please contact me if you have any questions or need additional information.



Eric D. Campbell
Assistant City Manager

[Attachment]

cc: Honorable Mayor and Members of the City Council
A.C. Gonzalez, City Manager
Larry Casto, City Attorney
Craig D. Kinton, City Auditor
Rosa A. Rios, City Secretary
Daniel F. Solis, Administrative Judge
Ryan S. Evans, First Assistant City Manager

Jill A. Jordan, P.E., Assistant City Manager
Mark McDaniel, Assistant City Manager
Joey Zapata, Assistant City Manager
M. Elizabeth Reich, Chief Financial Officer
Sana Syed, Public Information Officer
Elsa Cantu, Assistant to the City Manager – Mayor & Council



2016 Crime Summary

Public Safety Committee
January 9, 2017

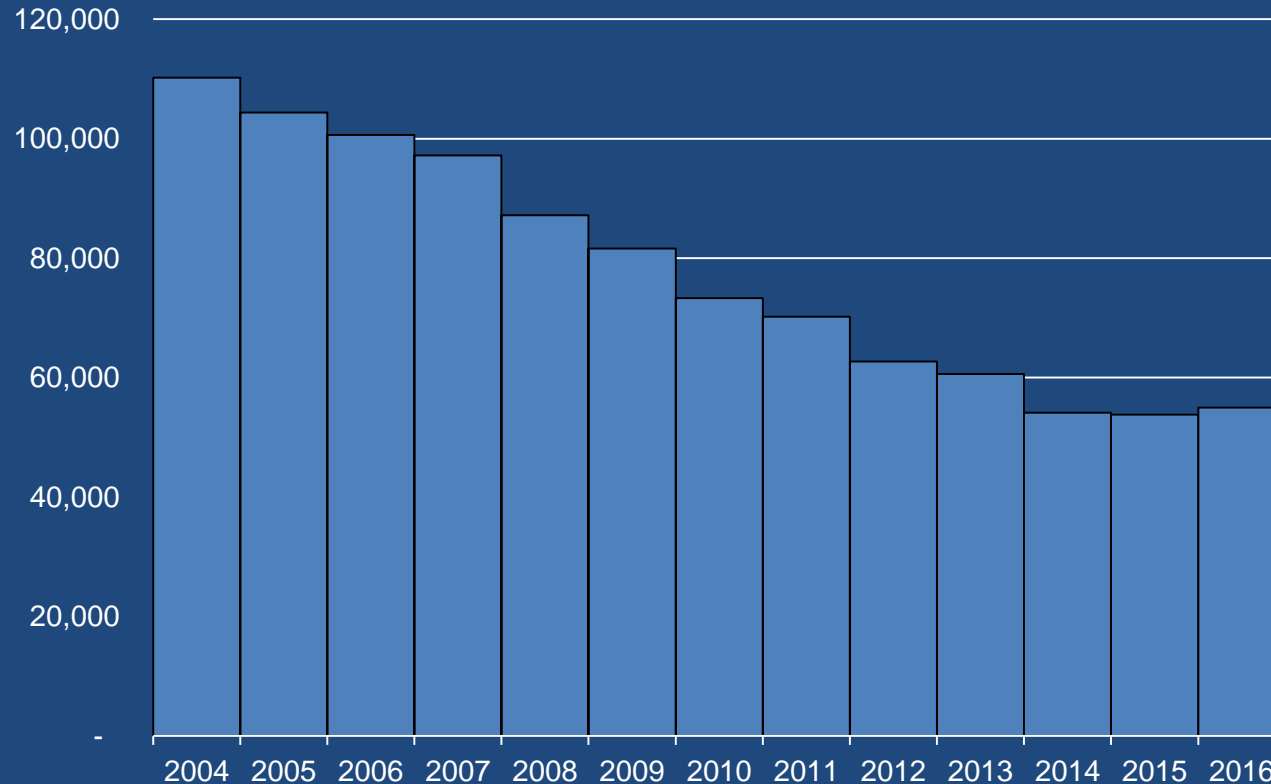


Purpose

To provide the Public Safety Committee a comprehensive 2016 crime report for the City of Dallas and discuss the department's ongoing efforts to address crime.

Overall Crime Comparison

Total Offenses



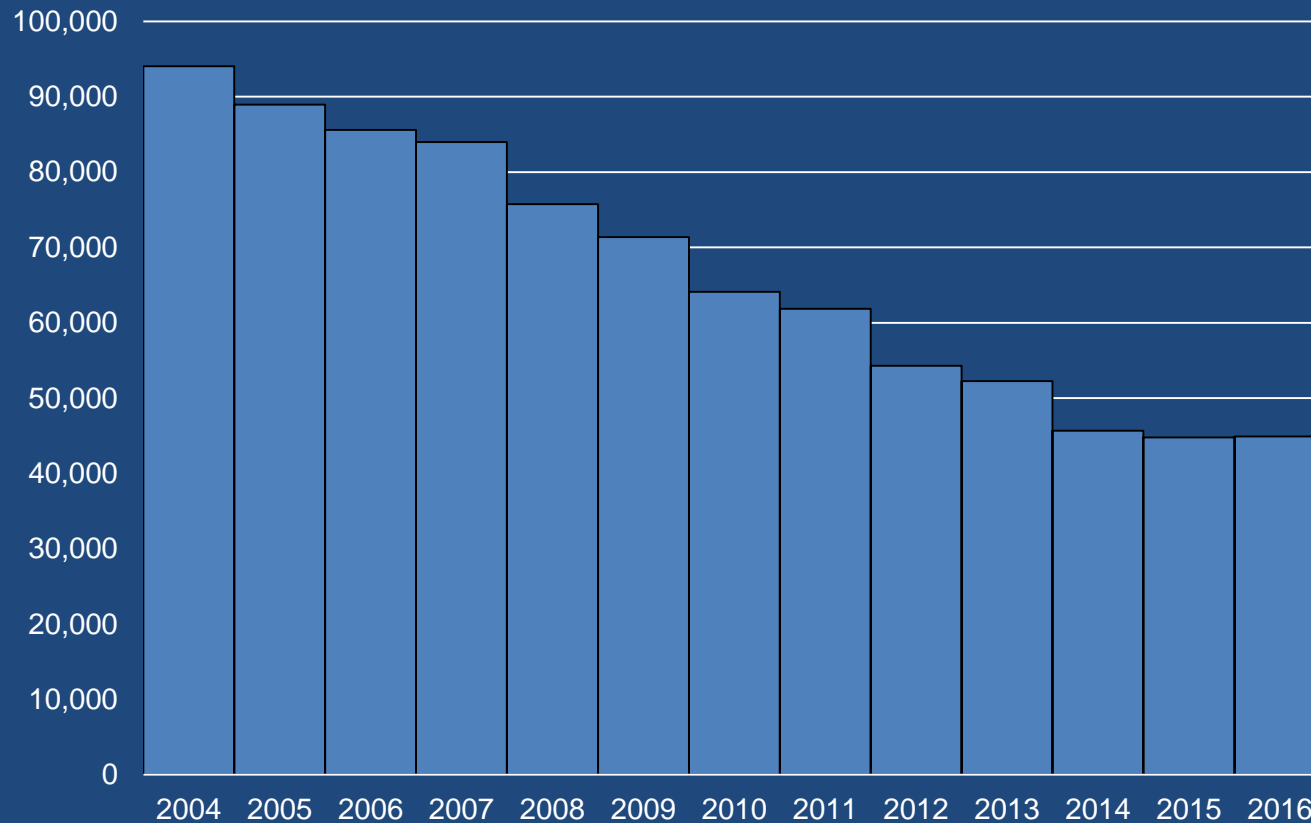
Overall Crime Rate

Year	Rate (per 1,000)
2004	89.720
2005	84.844
2006	80.635
2007	78.452
2008	68.311
2009	63.231
2010	61.183
2011	57.390
2012	50.485
2013	48.289
2014	42.539
2015	41.344
2016	41.688

Non-Violent Crime Comparison

2016 lowest per capita on record since 1964

Total Offenses



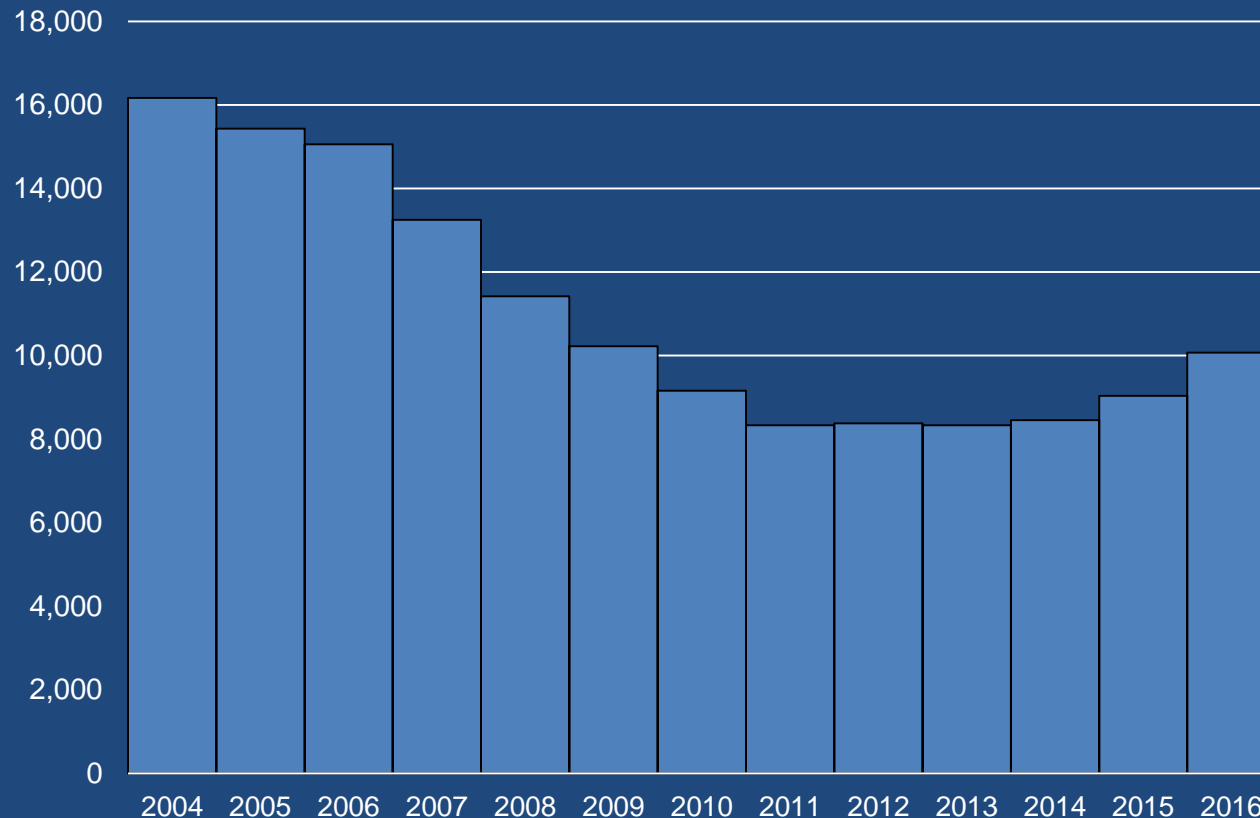
Non-Violent Crime Rate

Year	Rate (per 1,000)
2004	76.563
2005	72.303
2006	68.571
2007	67.760
2008	59.362
2009	55.310
2010	53.535
2011	50.579
2012	43.736
2013	41.652
2014	35.892
2015	34.402
2016	34.051

Violent Crime Comparison

2016 violent crime increased compared to previous year

Total Offenses



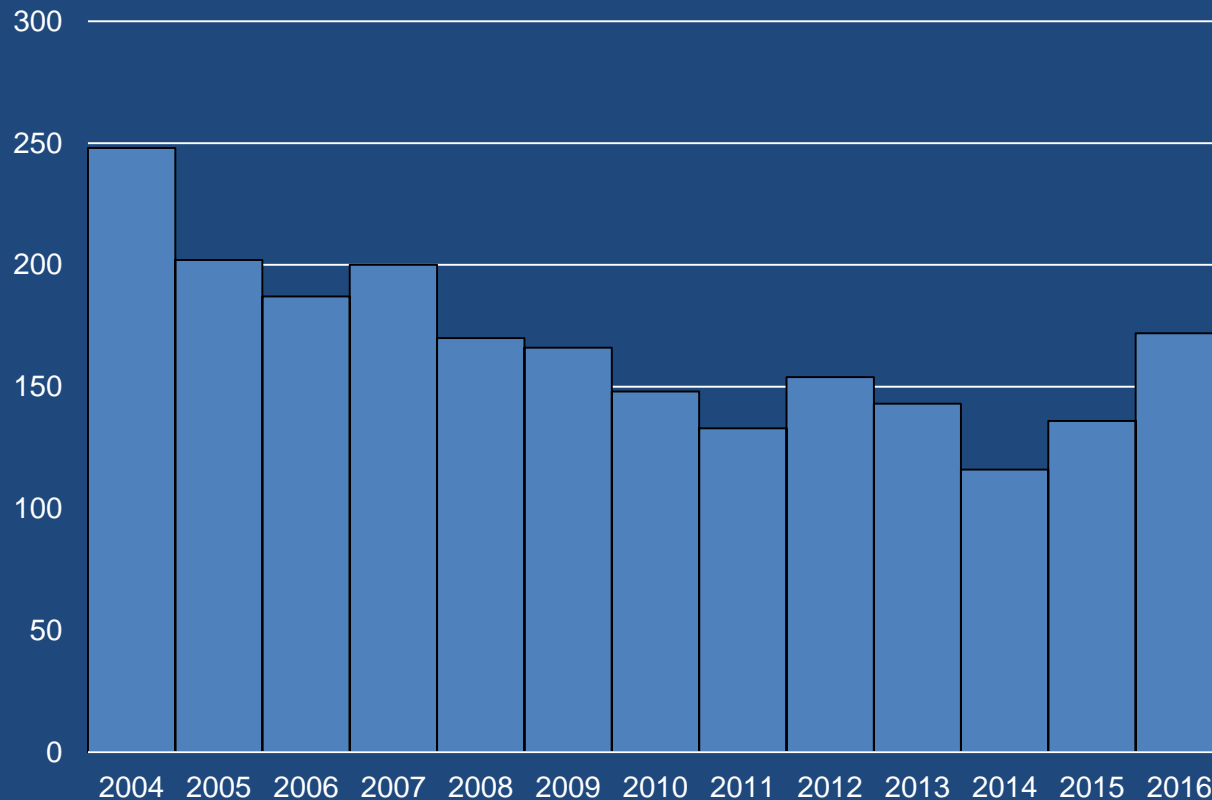
Violent Crime Rate

Year	Rate (per 1,000)
2004	13.157
2005	12.541
2006	12.064
2007	10.692
2008	8.948
2009	7.922
2010	7.648
2011	6.811
2012	6.750
2013	6.637
2014	6.647
2015	6.942
2016	7.637

Homicides

Total number of 2016 homicides – 172

Total Offenses



Homicide Crime Rate

Year	Rate (per 1,000)
2004	0.202
2005	0.164
2006	0.150
2007	0.161
2008	0.133
2009	0.129
2010	0.124
2011	0.109
2012	0.124
2013	0.114
2014	0.091
2015	0.104
2016	0.130

2016 CRIME REDUCTION OPERATION PLAN

Prevent



Foot Patrol

50 foot patrols
Enhance community engagement
Proactive measure
Increased visibility

Respond



Community Policing 2.0

84 officers redirected
to patrol duties to
improve response times

Reduce



Task Forces

Violent Crime Task Force
Property Crime Task Force
Drug Warrant Team
Domestic Violence Warrant Team Law
Enforcement
Collaboration

2016 Crime Report

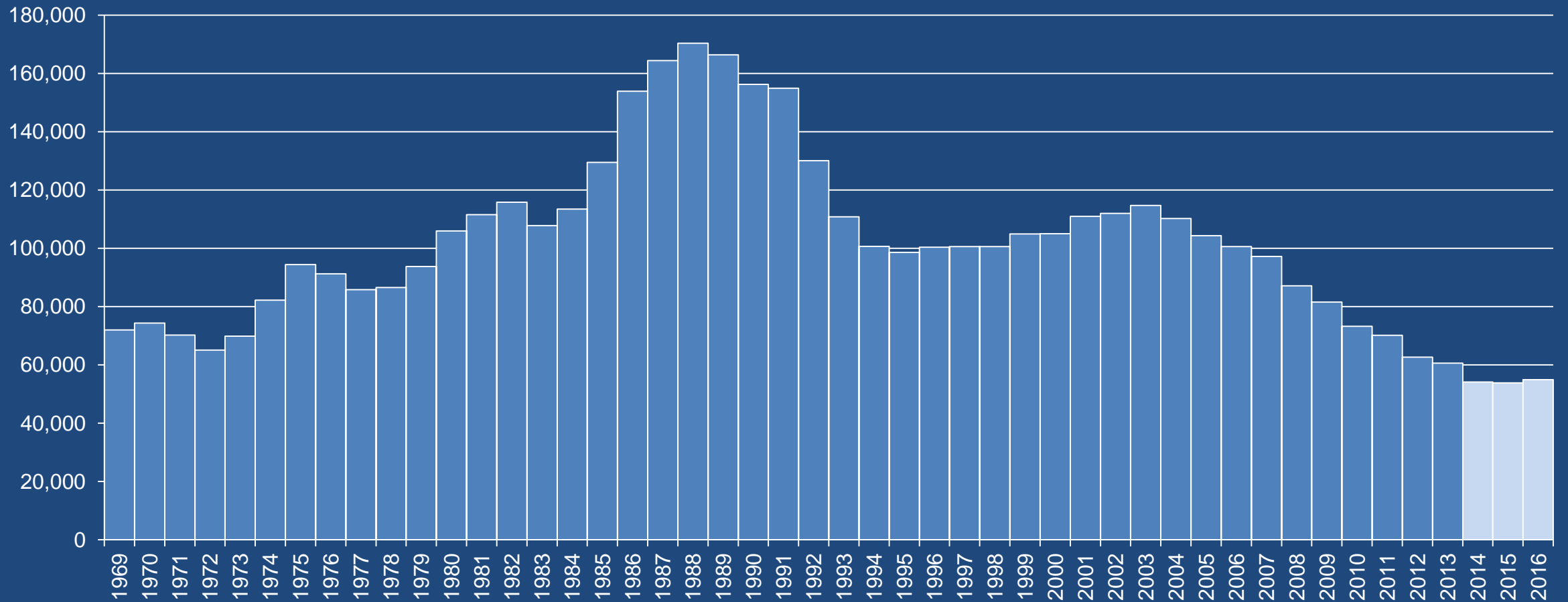
January 1, 2016 - December 31, 2016

				Crime Rate
CRIME TYPE	ACTUAL YTD	ACTUAL LYTD	% CHG YTD	
Violent Crimes				
Murder	172	136	26.47%	0.13
*Sexual Assault	767	782	-1.92%	0.58
Robbery	4,604	4,177	10.22%	3.49
Business	787	681	15.57%	n.c.
Individual	3,817	3,496	9.18%	n.c.
Aggravated Assault	4,529	3,943	14.86%	3.43
Total Violent Crime	10,072	9,038	11.44%	7.64
Non-Violent Crimes				
Burglary	10,948	11,121	-1.56%	8.30
Business	3,432	3,278	4.70%	n.c.
Residence	7,516	7,843	-4.17%	n.c.
Theft	26,370	26,076	1.13%	19.99
Auto Theft	7,592	7,594	-0.03%	5.76
Total Non-Violent	44,910	44,791	0.27%	34.05
Total Index Crimes	54,982	53,829	2.14%	41.69

2016 had a slight 2.14% increase in overall crime compared to 2015, which had the lowest overall crime since 1969

2016

3rd Best Year Since 1969



Dallas Clearance Rates

Offense	3 Year Average Clearance Rate	2016 Clearance Rate
Murder	55%	49%
Sexual Assault	56%	59%
Robbery	17%	17%
Aggravated Assault	51%	51%
Burglary	5%	5%
Theft	11%	8%
Auto Theft	7%	9%

2016

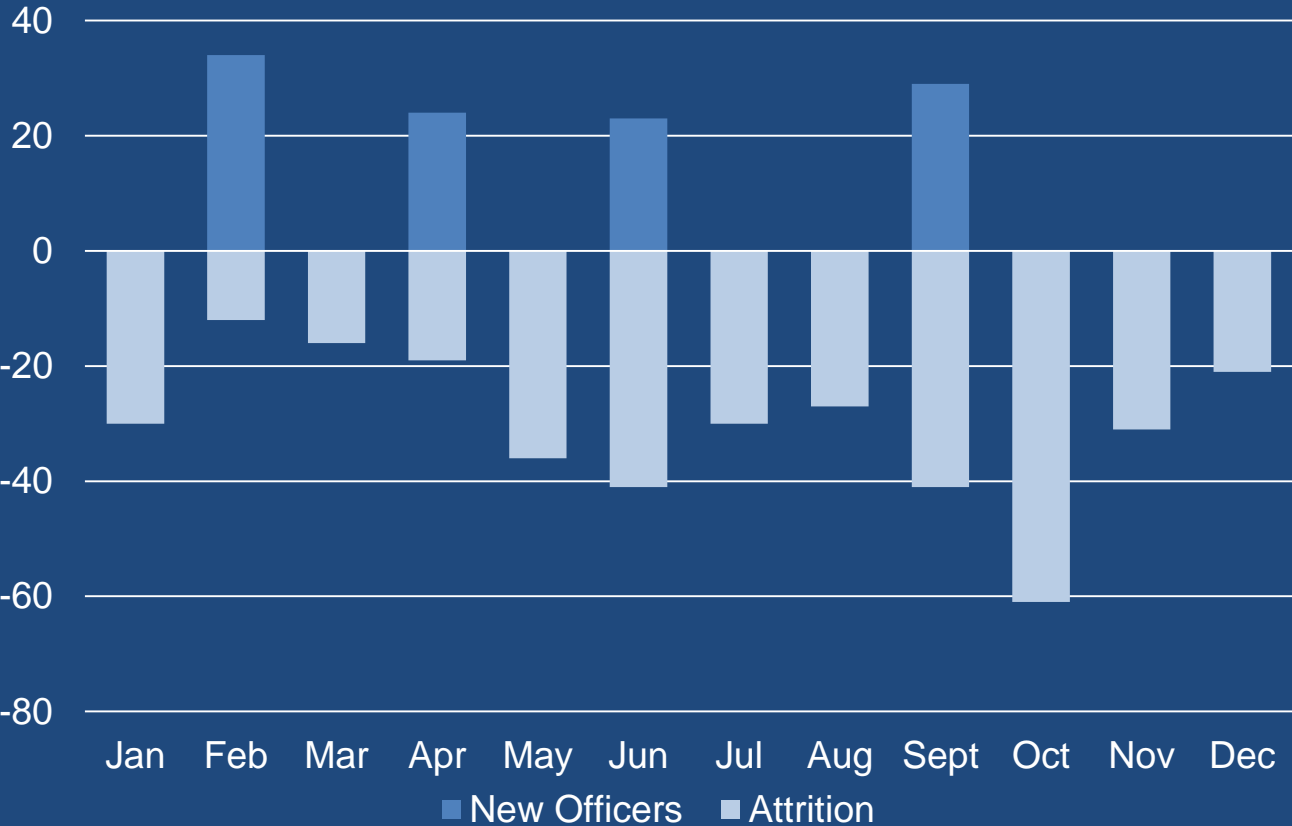
Response Times & Calls for Service

Year	Priority 1 Response Time	Priority 2 Response Time	Priority 3 Response Time	Priority 4 Response Time	Total Dispatched 911 Calls
2015	8.09	19.59	65.18	89.27	606,541
2016	7.94	18.26	49.15	63.34	628,835
Change	-0.15	-1.33	-16.03	-25.93	+22,294

- 22,294 more dispatched calls for service
- Overall reduction in response time

Hiring and Staffing Levels

January 1 – December 31, 2016



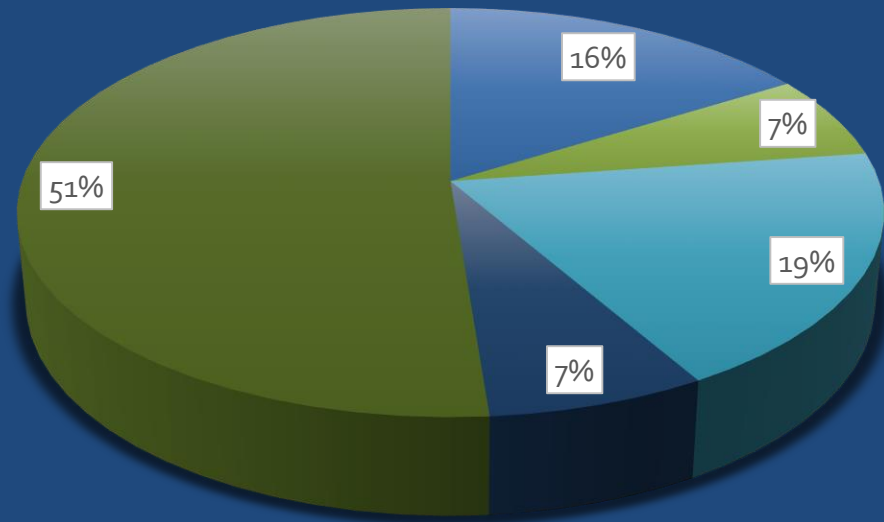
- Current Sworn Strength – 3,257
- Academy Recruits Hired – 108
- Attrition – 365

* Current sworn strength as of December 31, 2016

Sworn Attrition

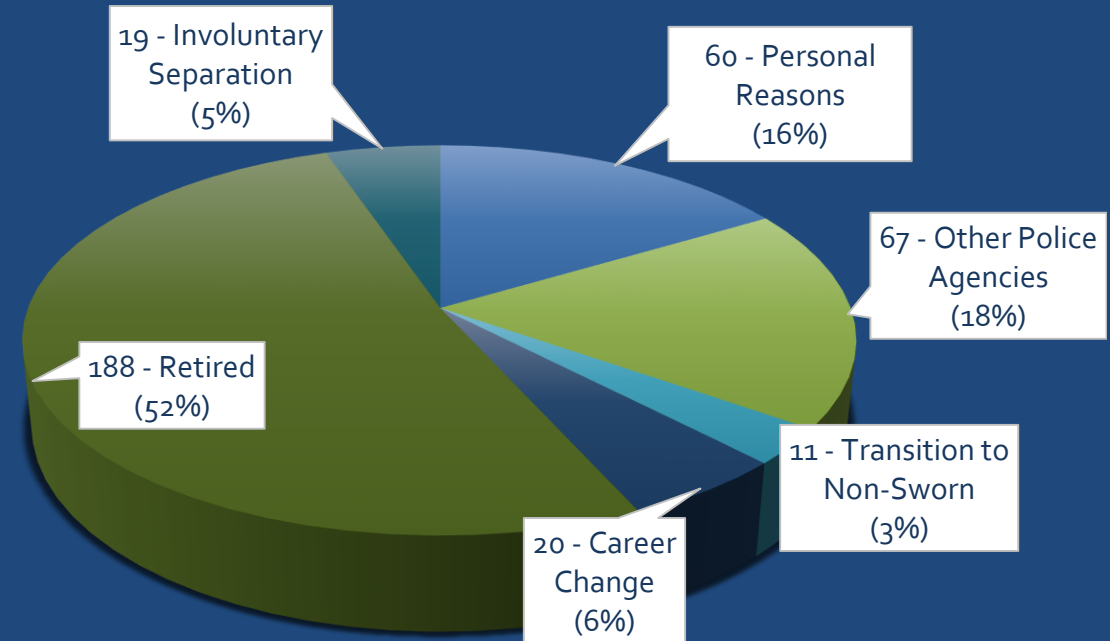
January 1 – December 31, 2016: attrition total - 365

DPD Attrition by Tenure



- 0 - 3 years (59)
- 3 - 5 years (24)
- 5 - 10 years (69)
- 10 - 20 years (26)
- 20+ years (187)

DPD Attrition Exit Interview Responses



- 60 - Personal Reasons
- 67 - Other Police Agencies
- 11 - Transition to Non-Sworn
- 20 - Career Change
- 188 - Retired
- 19 - Involuntary Separation

Where do we go from here?

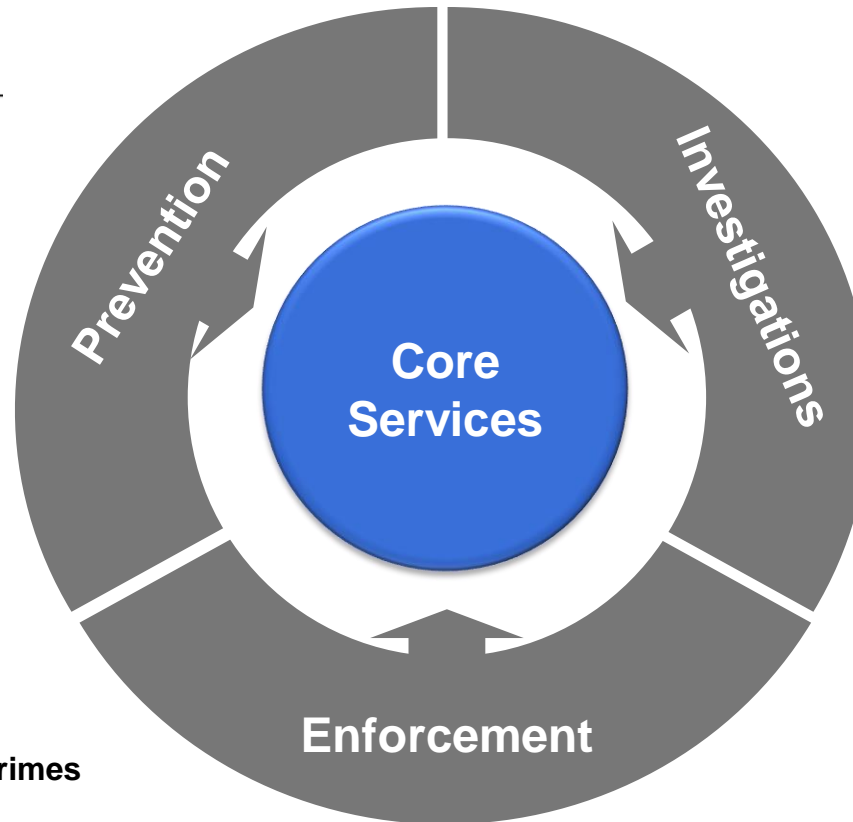
2017 Policing Strategies

PREVENTION

- **Community Outreach**
 - Community Affairs
 - Crisis Intervention
- **First Offender Program**
- **Community Engagement Division**
 - Police Athletic League (PAL)
 - Blue in the School
 - Junior Police Academy
 - Police Explorer Program

ENFORCEMENT

- **Field Patrol**
- **Narcotics/Vice Related Crimes**
- **Gang**
- **Nuisance Abatement**
- **Fugitive Apprehension**



INVESTIGATIONS

- **Violent Crimes Section**
- **Crime Scene Response**
- **Youth Services Section**
- **Domestic Violence Unit**
- **Auto Theft**
- **Financial Crimes**
- **Fusion / Intelligence**
- **Property Crimes**
- **Internal Affairs**
- **Public Integrity**



**Working with less, will not
prevent us from sacrificing
and giving our best**

An aerial photograph of a city skyline, likely Dallas, Texas, featuring the Reunion Tower and the Margaret Hunt Browning Bridge. The image is in grayscale, with the text overlaid in blue and black.

3rd

**Lowest Overall Crime Year
on Record Since 1969**

Questions?