

Memorandum



DATE: September 9, 2016

TO: Honorable Members of the Public Safety Committee:
Adam Medrano (Chair), B. Adam McGough (Vice Chair), Sandy Greyson, Tiffinni A. Young,
Jennifer S. Gates, Philip T. Kingston

SUBJECT: **Wildland Urban Interface Program**

On Monday, September 12, 2016, you will be briefed on the Wildland Urban Interface Program by Driver Engineer Kevin Luper of the Dallas Fire-Rescue Department.

The briefing materials are attached for your review.

Please contact me if you have any questions or need additional information.



Eric D. Campbell
Assistant City Manager

[Attachment]

cc: Honorable Mayor and Members of the City Council
A.C. Gonzalez, City Manager
Christopher D. Bowers, (I) City Attorney
Craig D. Kinton, City Auditor
Rosa A. Rios, City Secretary
Daniel F. Solis, Administrative Judge
Ryan S. Evans, First Assistant City Manager

Jill A. Jordan, P.E., Assistant City Manager
Mark McDaniel, Assistant City Manager
Joey Zapata, Assistant City Manager
M. Elizabeth Reich, Chief Financial Officer
Sana Syed, Public Information Officer
Elsa Cantu, Assistant to the City Manager – Mayor & Council



Dallas Fire-Rescue Wildland Urban Interface Program



Public Safety Committee
September 12, 2016





Vision Statement

- The DFR Vision Statement:

“To be the best trained, technologically advanced, customer-focused fire service organization in the country.”



Briefing Objectives

- History of Wildland Team
- Wildland Equipment
- Wildland Urban Interface (WUI) and its significance
- What is a Community Wildland Protection Plan (CWPP)
- September 14, 2016 – Council Agenda



Program History

- Program started with a \$200,000 UASI Grant.
- Coordinator selected to establish DFR first Wildland Strike Team under Special Operations Division
- Partnered with the Texas Forest Service for training and technical support
- Primarily a state asset under Texas Intrastate Mutual Aid System (TIFMAS)



Program History

Grant Funds Paid For:

- Wildland Personal Protective Ensemble (PPE)
- Wildland Hoses and Nozzles
- Hand Tools
- Radios
- Chain Saws
- Protective Shelters
- Initial Wildland Training Course



Program History

- Wildland Team Deployment Highlights:
 - Bastrop Fire 2011
 - Possum Kingdom Fire 2011
 - Trophy Club Fire 2014
 - Hidden Pines Fire 2015 (Bastrop)
 - Rowlett Tornado as a Saw Crew 2015



Wildland Fire Team Today

- The program has evolved into two specialized teams.
 - Both teams are All-Hazards trained.
 - Wildland Strike Team
 - Operates on wildland engines to deploy wildland fire fighting tactics and structure protection.
 - Every member is on the Strike Team.
 - Wildland Hand Crew (One of only two municipal teams in Texas)
 - A highly specialized team that can remain self-sufficient for up to 72 hours in remote areas while wildland firefighting.

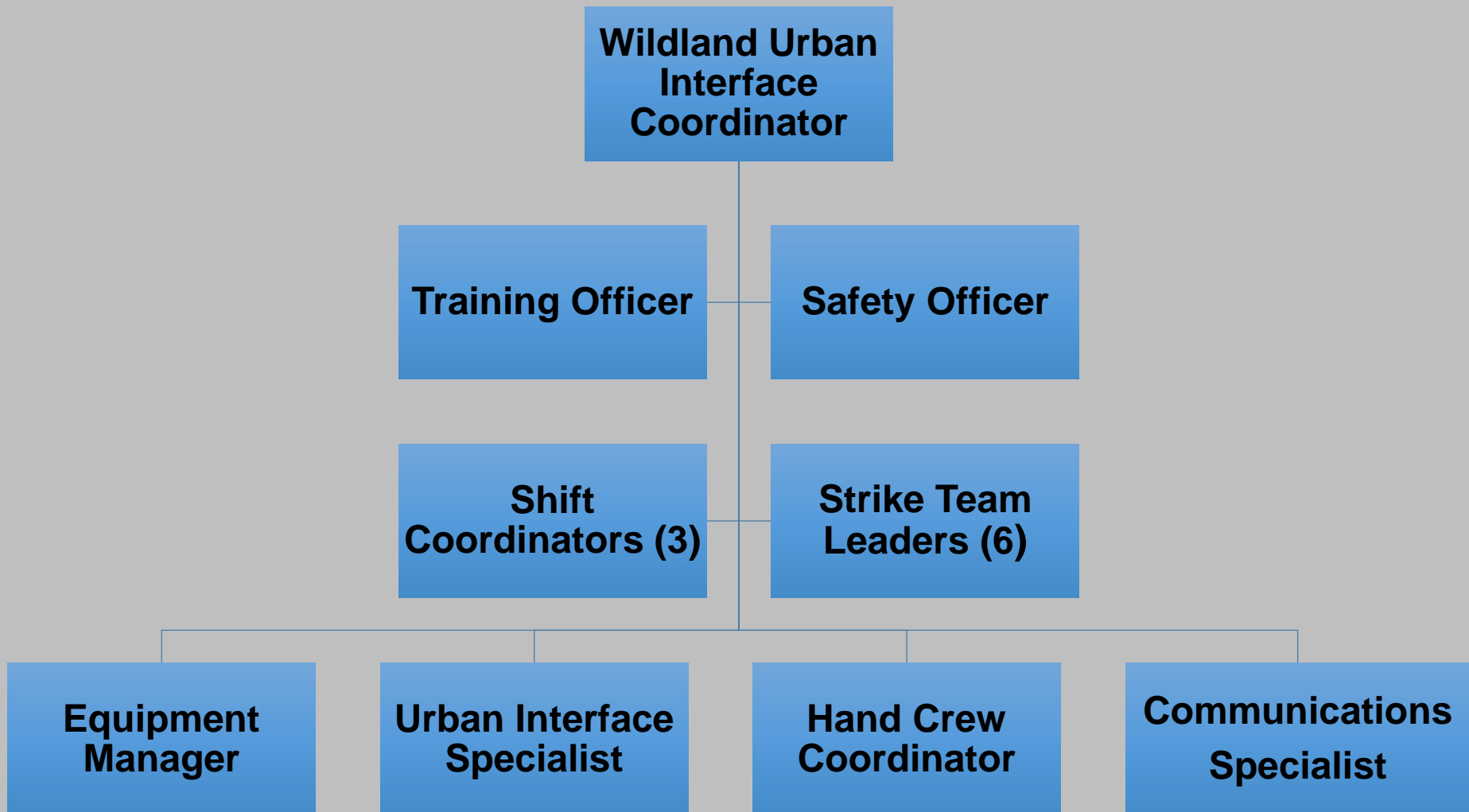


Wildland Fire Team

- 50 Member team
- Comprised of ranks Fire Rescue Officer through Battalion Chief
- Not centralized – team has to muster at designated rally point when assigned

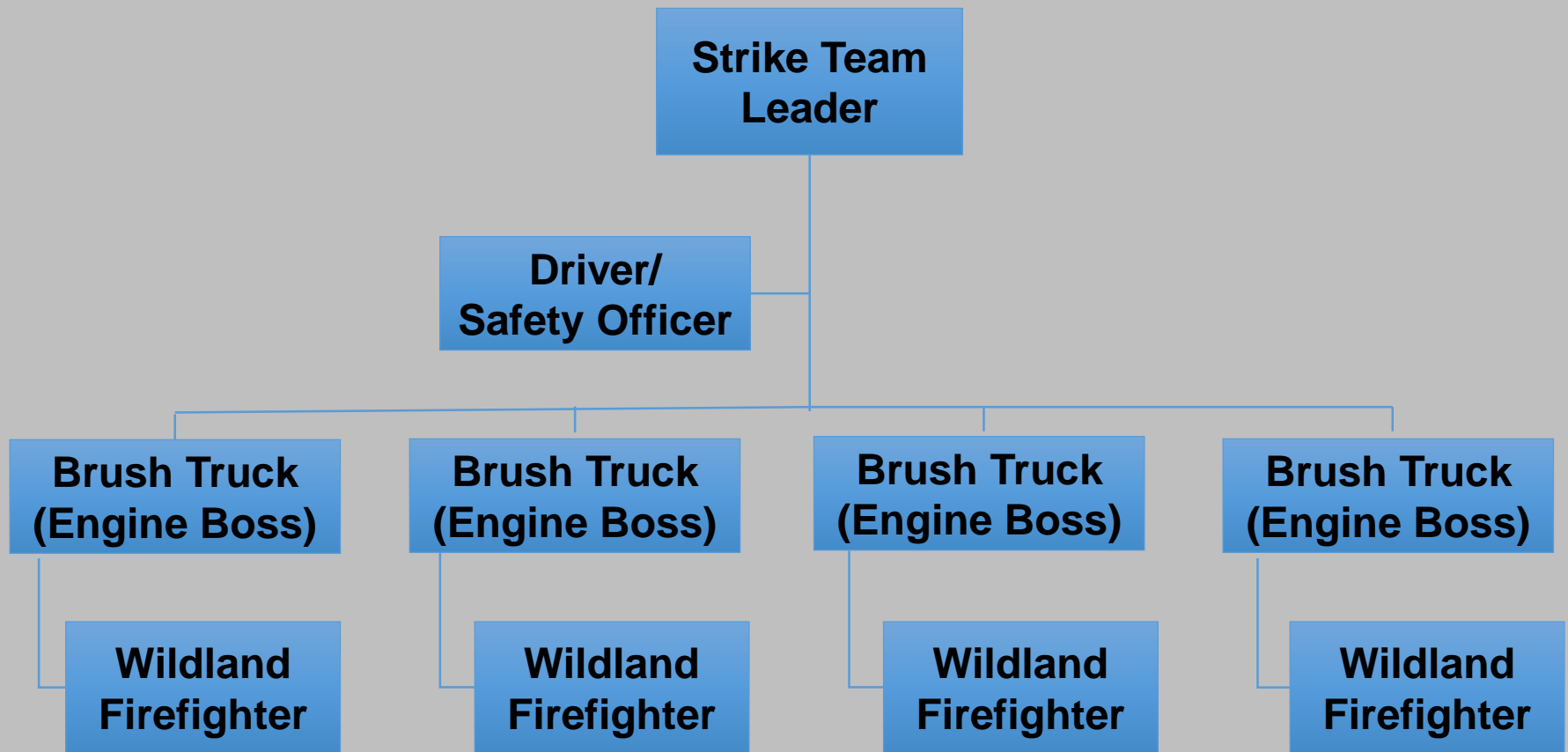


Chain of Command



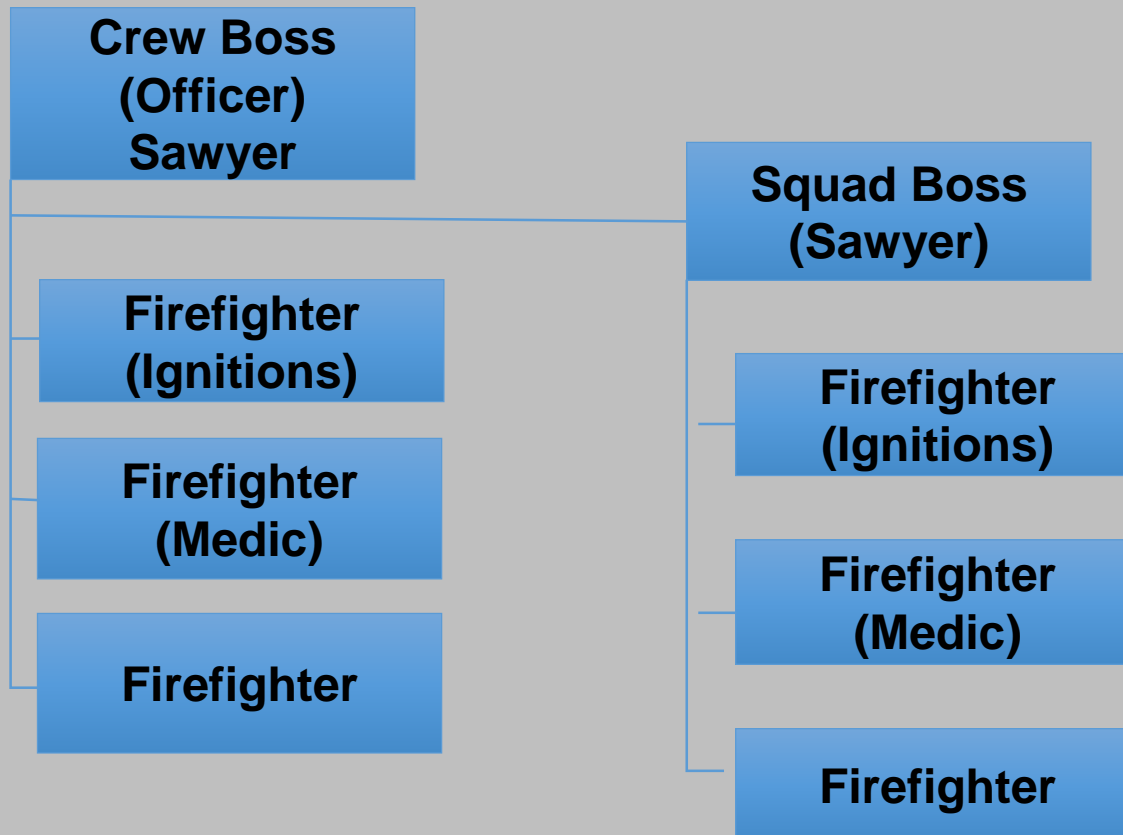


Strike Team Organization





Handcrew (Module) Organization





Dallas Fire-Rescue Wildland Team



WUI Equipment





Wildland Urban Interface (WUI)

- Zones where structures and other human improvements meet and intermingle with undeveloped wildland or vegetative fuels





Wildland Urban Interface

- In Texas, 85% of wildland fires happen within 2 miles of a community





Wildland Fire Emergency Why Now?

Population

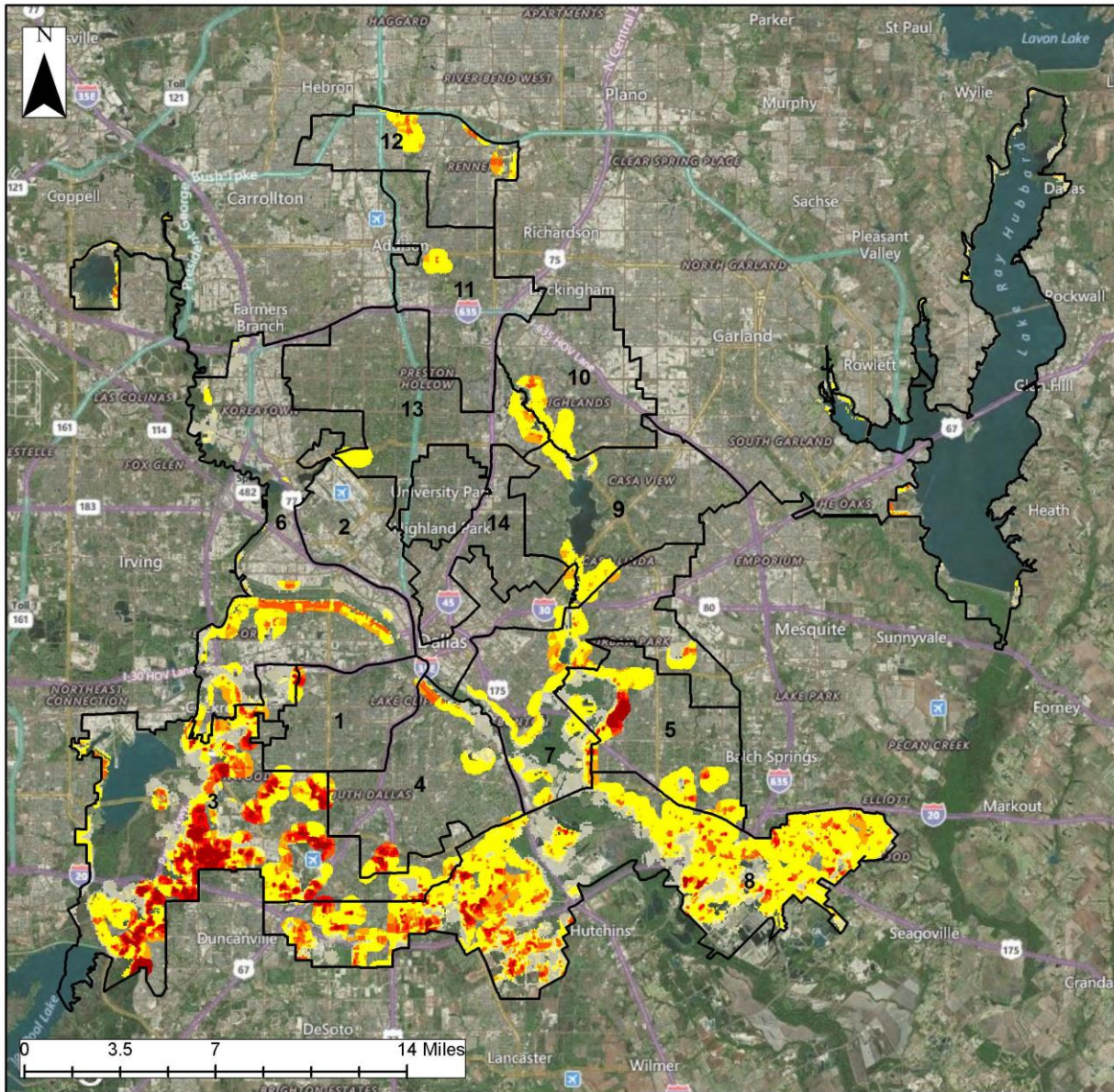


Climate
Weather
Cycle

Changes in Land Use - Fuels



Dallas Fire-Rescue Wildland Team

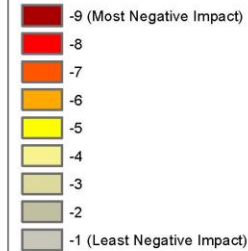


City of Dallas Wildfire Risk by Council Districts

Legend

City Council Districts

WUI Response Index
Rating of potential impact of a wildfire on people and their homes.



Data Source: Texas Wildfire Risk Assessment Portal and City of Dallas GIS
By: E. O'Connor, TFS



What is a Community Wildfire Protection Plan (CWPP)?

- A written and agreed upon document that identifies how a community will reduce its risk from wildland fire
- A CWPP identifies how Dallas Fire-Rescue and our partners will mitigate against, prepare for and respond to wildfires and disasters

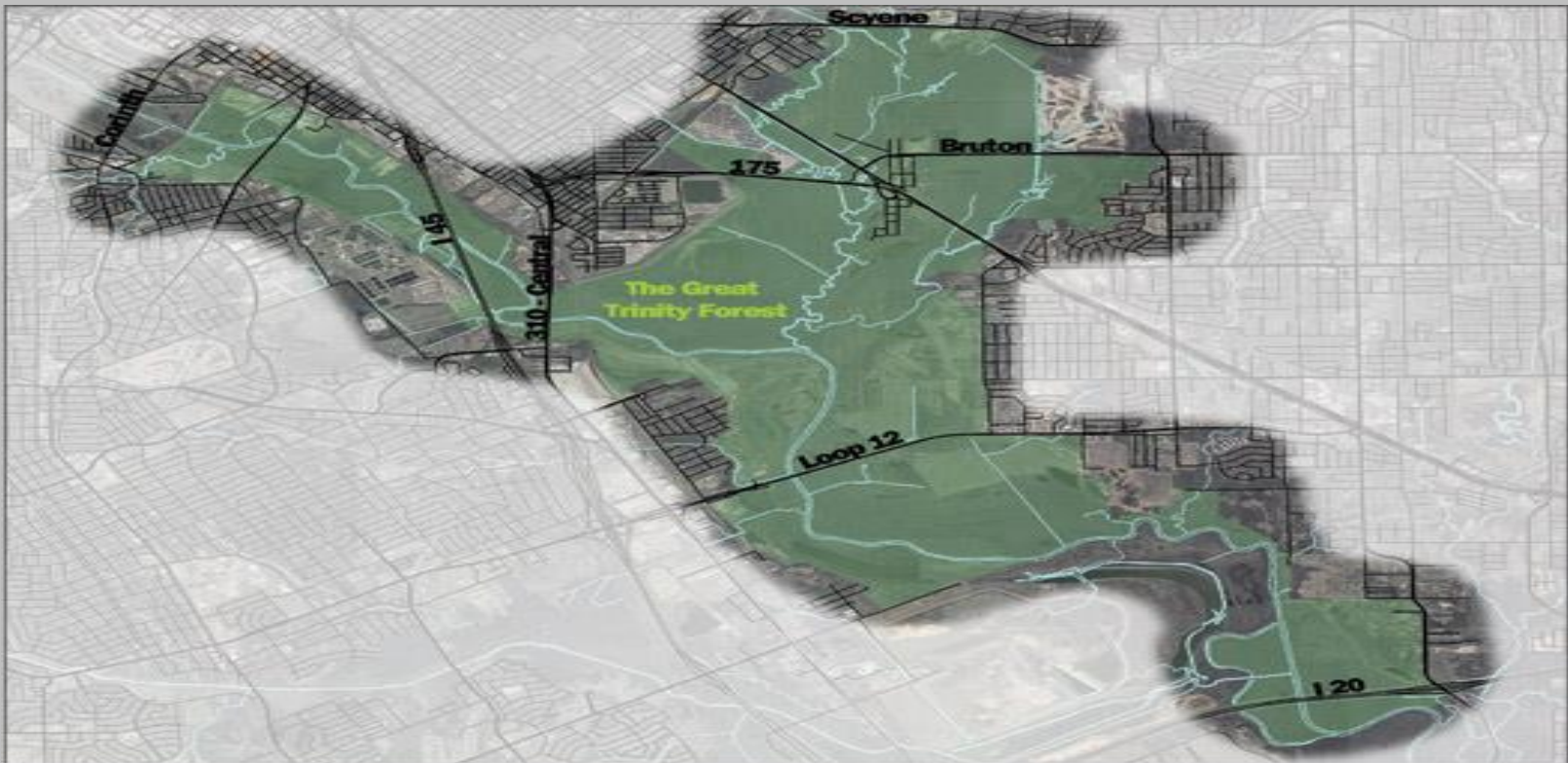


Why Should DFR Have a CWPP?

- Suppression of historic low-intensity naturally-occurring wildfires has caused a buildup of wildland fuels in WUI's
- Dallas has critical WUI areas (Examples)
 - Trinity River Forest (the largest urban hardwood forest in the United States)
 - Cedar Ridge Preserve/Mountain Creek area
 - Lake Ray Hubbard



The Great Trinity Forest



- The Great Trinity Forest and River cuts through a dense urban core of 1.2 million residents as it flows towards the Gulf of Mexico



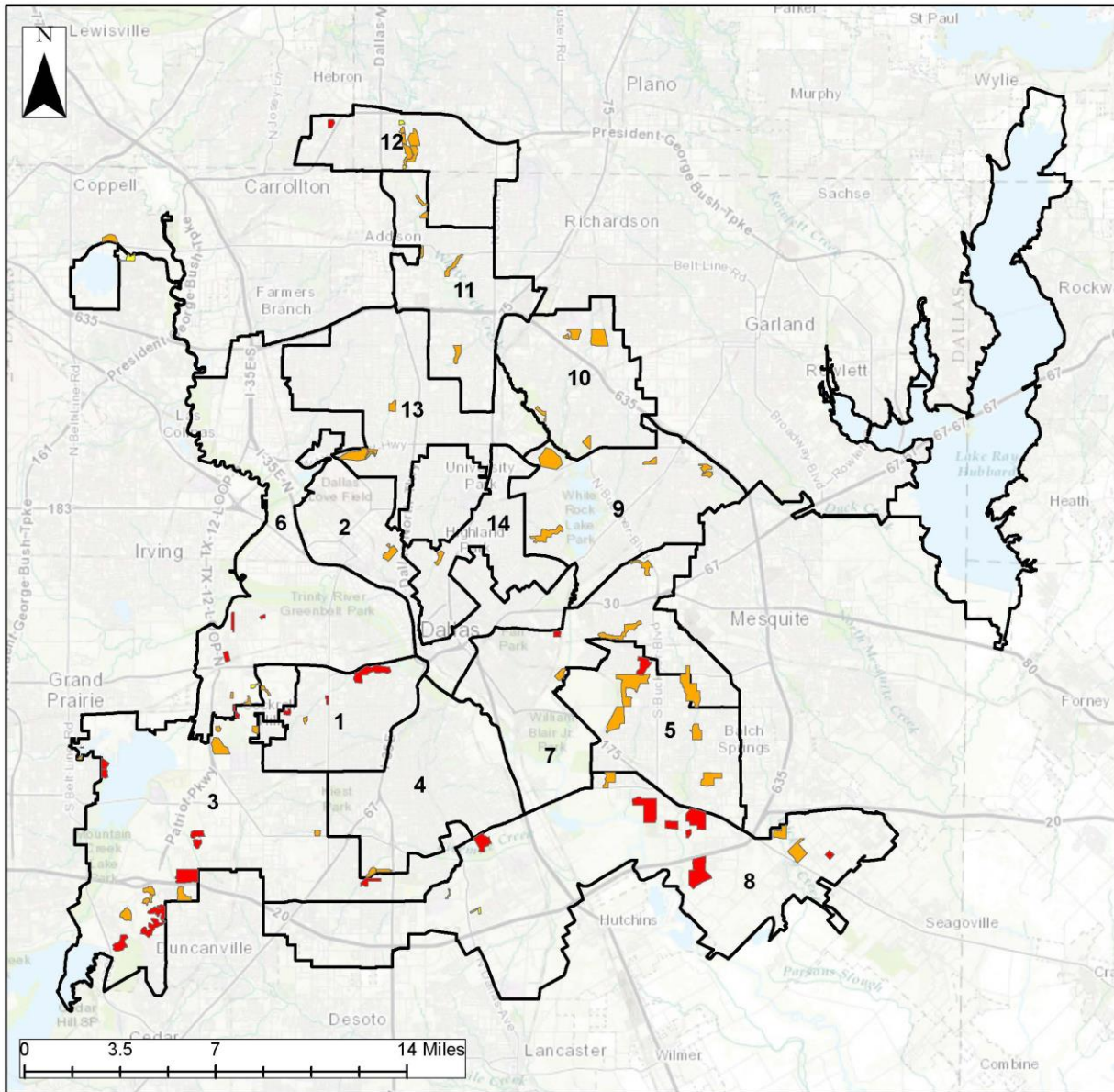
Cedar Ridge Preserve



- Cedar Ridge Preserve in Southwest Dallas is surrounded on three sides by single family homes



Dallas Fire-Rescue Wildland Team



City of Dallas Wildfire Risk by Council Districts

Legend

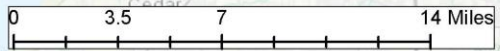
City Council Districts

Total Hazard Rating

- Low
- Moderate
- High



Data Source: Texas Wildfire Risk Assessment Portal and City of Dallas GIS
By: E. O'Connor, TFS





History



- Lock and Dam #1 along the Trinity River and the establishing of Trinity City in 1916



Today



- The Lock Keeper's house today still occupied along with many other dwellings in or bordering the Trinity Forest



September 14, 2016 Council Agenda

Staff is seeking the support and recommendation from the Public Safety Committee to move the following upcoming agenda item forward to full Council for approval

- Authorize the acceptance of a Community Wildfire Protection Plan Grant from the Texas A&M Forest Service, and
- Execution of the grant agreement
- Total not to exceed \$10,000



Partnerships



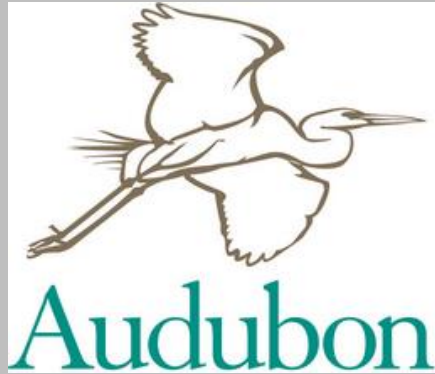
TEXAS A&M
FOREST SERVICE

@dallas
Park & Recreation





Partnerships





Questions?

