

Memorandum



CITY OF DALLAS

DATE August 5, 2016

TO The Honorable Members of the Transportation and Trinity River Project Committee:
Lee M. Kleinman (Chair), Deputy Mayor Pro Tem Erik Wilson (Vice-Chair), Sandy Greyson,
Mayor Pro Tem Monica R. Alonzo, Adam Medrano, and Casey Thomas II

SUBJECT Dallas Floodway Risk Assessment Addendum

On Monday, August 8, 2016, you will be briefed on the Dallas Floodway Risk Assessment Addendum. Attached are the materials for the briefing.

Please let me know if you have any questions or concerns.

A handwritten signature in black ink, appearing to read 'Mark McDaniel'.

Mark McDaniel
Assistant City Manager

c: Honorable Mayor and Members of the City Council
A.C. Gonzalez, City Manager
Christopher D. Bowers, Interim City Attorney
Craig D. Kinton, City Auditor
Rosa A. Rios, City Secretary
Daniel F. Solis, Administrative Judge
Ryan S. Evans, First Assistant City Manager

Eric D. Campbell, Assistant City Manager
Jill A. Jordan, P.E., Assistant City Manager
Joey Zapata, Assistant City Manager
Jeanne Chipperfield, Chief Financial Officer
Sana Syed, Public Information Officer
Elsa Cantu, Assistant to the City Manager – Mayor & Council

DALLAS FLOODWAY RISK ASSESSMENT ADDENDUM

Transportation and Trinity River Project Committee

August 8, 2016



US Army Corps of Engineers
BUILDING STRONG®



Overview

Levee Safety Program Components

- Inspections
- Risk Assessments
- Risk Communications
- Risk Reduction
- Risk Management



Levee Safety Program Background

- WRDA 2007 & WRRDA 2014 mandates making levee information publicly available, including condition and potential consequences due to levee breach or overtopping.
 - ▶ The U.S. Army Corps of Engineers (USACE) has the responsibility to assess levee systems and communicate findings to the sponsor.
 - ▶ Used to identify levee safety issues, prioritize levee safety program activities, define the scope of further evaluations, and recommend interim risk reduction measures.
 - ▶ It is a characterization that is used to prioritize actions to address safety issues.
 - ▶ Can change if there are significant changes in the system, or as new information becomes available.



Risk Assessment Background

- Dallas Floodway Risk Assessment completed by USACE and the City of Dallas in 2012.
- What has happened since 2012?
 - ▶ East Bank – West Bank Interceptor
 - ▶ Cutoff walls
 - ▶ New pump stations
- Why are we here?
 - ▶ Risk Assessment is being updated to reflect new pump stations, cutoff walls and the East/West interceptor projects.

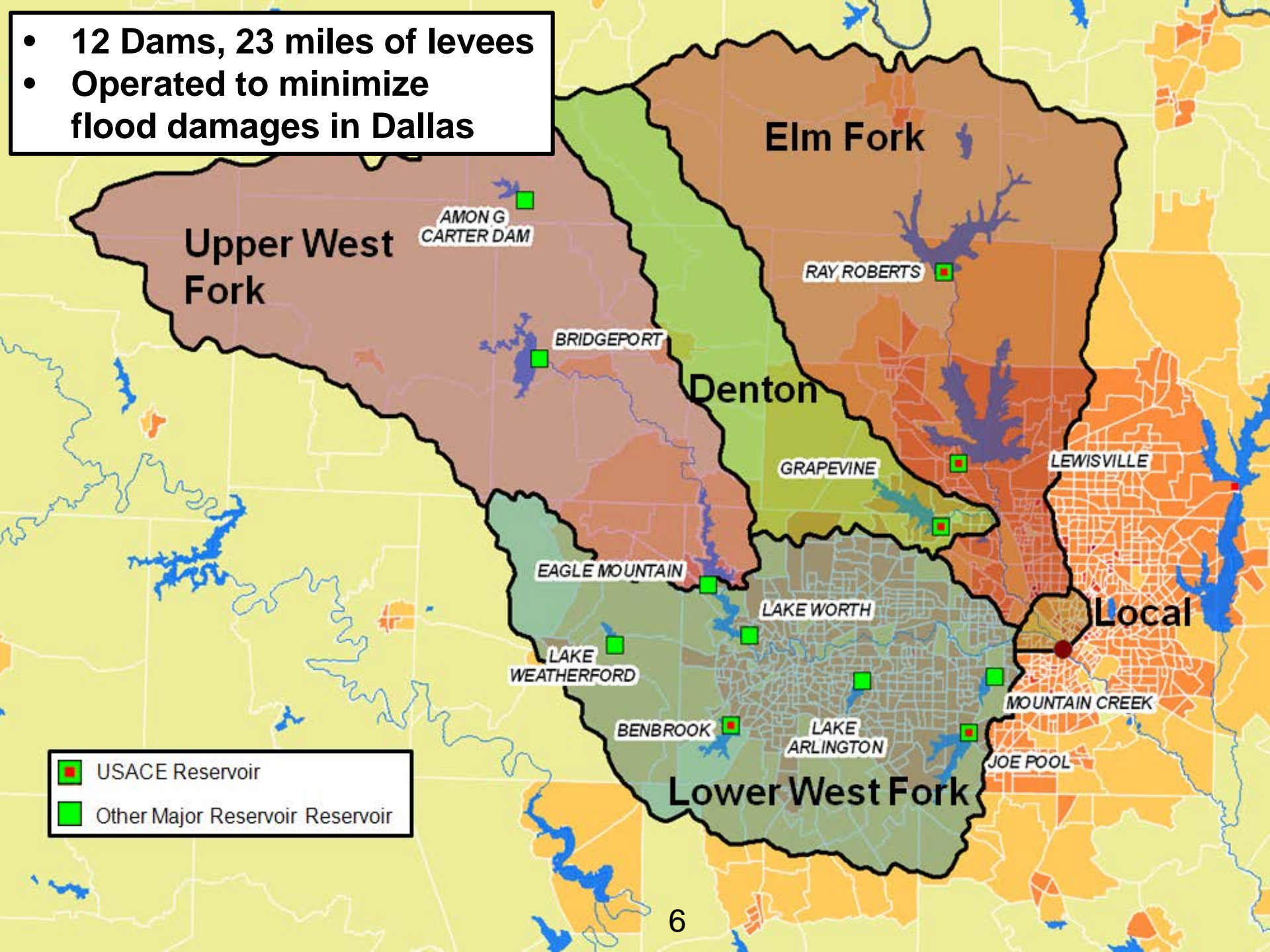


The Dallas Floodway

- Among the best maintained levee systems in the nation.
- The levee sponsor has been very diligent addressing deficiencies as they are identified.
- The levee system protects an area with high population and a lot of infrastructure.
- The Dallas Floodway levee system has a high likelihood of conveying large flood events.
- It will always have a high degree of attention within USACE.

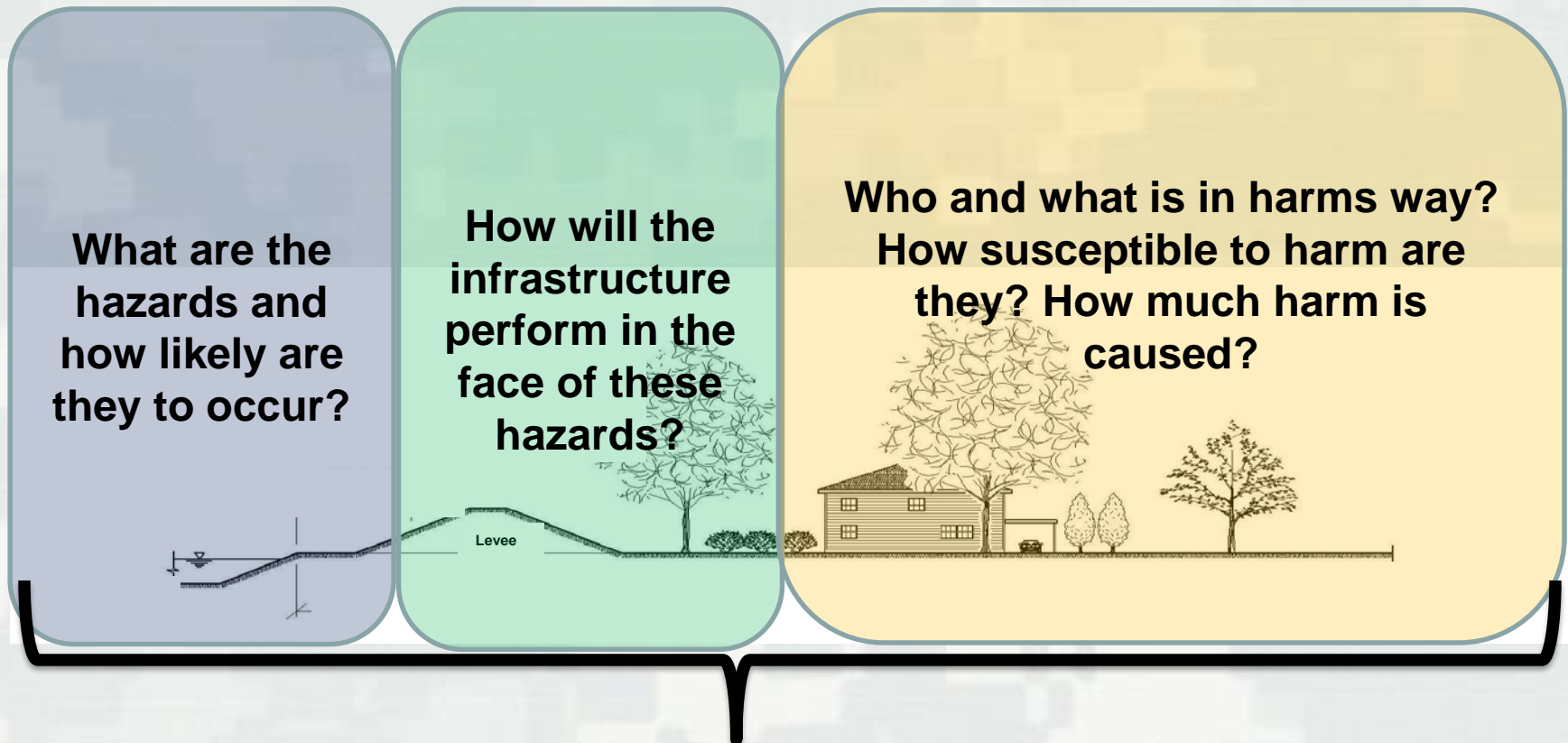


- 12 Dams, 23 miles of levees
- Operated to minimize flood damages in Dallas



Risk Informed View of Infrastructure Safety

$$\text{Risk} = f(\text{Hazard}, \text{Performance}, \text{Consequences})$$



Infrastructure Safety Program: Focused on People, Performance, and Risks



Why this is Important to USACE...

- Informs the prioritization of the Dallas Floodway in the USACE levee safety portfolio.
- Results affect the urgency of activities related to flood risk management of the system.
- Builds a foundation for shared responsibility for continued development and implementation of flood risk management solutions for the Dallas Floodway.



Why this is Important to the City...

- Closes out actions related to the interceptor and cutoff wall.
- Helps inform future investment decisions.
- Highlights critical operation and maintenance, monitoring, emergency management, and training activities needed.
- Can use the information to support subsequent permit applications.
- Helps communicate flood risk to the community.



Path Forward

- Risk Assessment Kick-Off
- Site Visit
- Data Collection and Review
- Technical Risk Analysis
- Generate Report
- Review Activities
- Brief Levee Safety Oversight Group (LSOG)
- Out-brief

USACE and Trinity Watershed Management will collaborate on all risk assessment actions.



Questions, Comments, or Discussion

