

# Memorandum



CITY OF DALLAS

DATE April 22, 2016

TO The Honorable Members of the Transportation and Trinity River Project Committee:  
Lee M. Kleinman (Chair), Deputy Mayor Pro Tem Erik Wilson (Vice-Chair), Sandy Greyson,  
Mayor Pro Tem Monica R. Alonzo, Adam Medrano, and Casey Thomas II

SUBJECT Trinity River Corridor Project  
Dallas Floodway and Dallas Floodway Extension Project Updates

On Monday, April 25, 2016, you will be briefed on the Trinity River Corridor Project Dallas Floodway and Dallas Floodway Extension Project. The briefing materials are attached for your review.

Please feel free to contact me if you have any questions or concerns.

A handwritten signature in black ink, appearing to read 'Mark McDaniel'.

Mark McDaniel  
Assistant City Manager

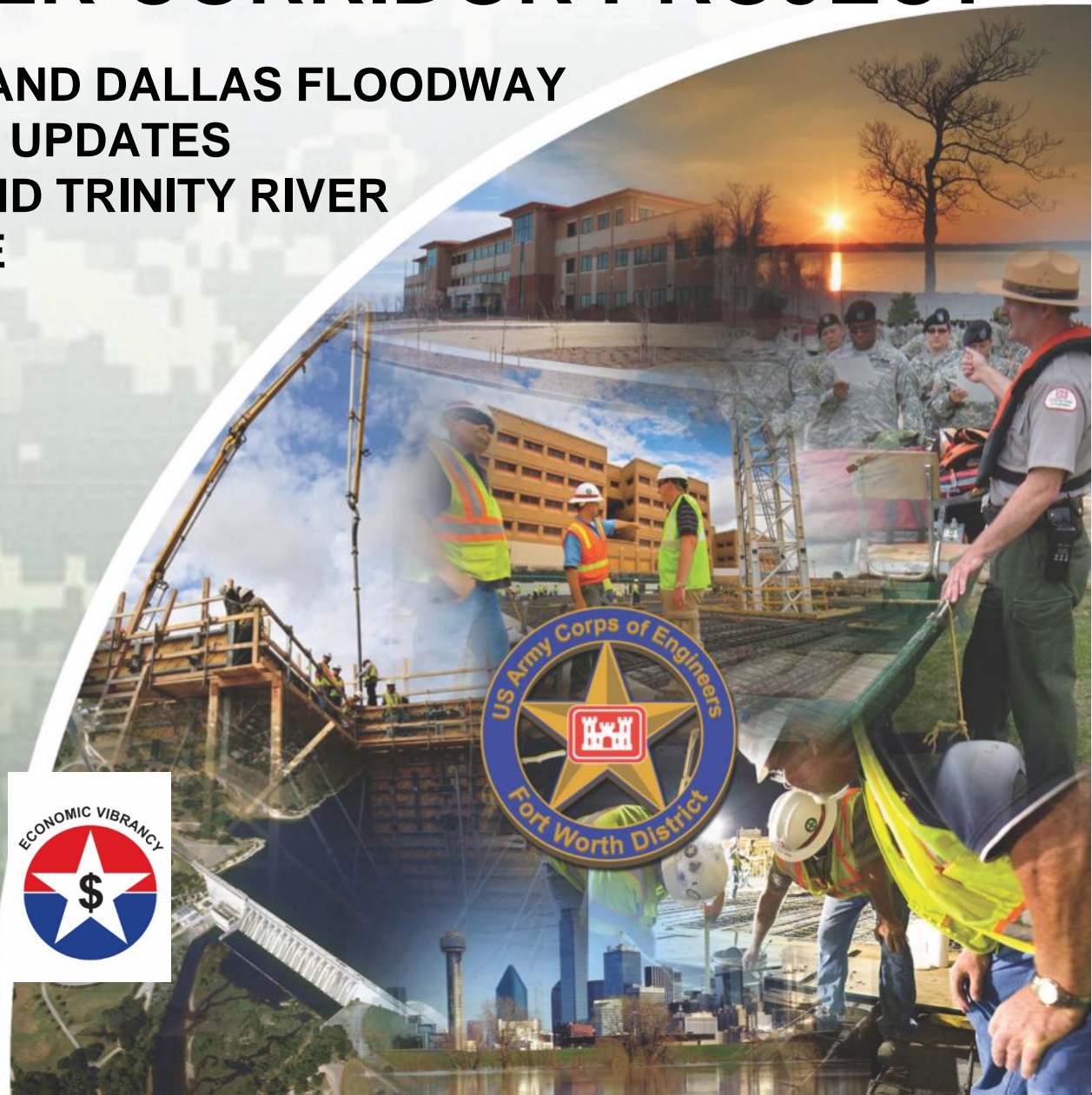
C: Honorable Mayor and Members of the City Council  
A.C. Gonzalez, City Manager  
Warren M.S. Ernst, City Attorney  
Craig D. Kinton, City Auditor  
Rosa A. Rios, City Secretary  
Daniel F. Solis, Administrative Judge  
Ryan S. Evans, First Assistant City Manager

Eric D. Campbell, Assistant City Manager  
Jill A. Jordan, P.E., Assistant City Manager  
Joey Zapata, Assistant City Manager  
Jeanne Chipperfield, Chief Financial Officer  
Sana Syed, Public Information Officer  
Elsa Cantu, Assistant to the City Manager – Mayor & Council

# TRINITY RIVER CORRIDOR PROJECT

DALLAS FLOODWAY AND DALLAS FLOODWAY  
EXTENSION PROJECT UPDATES  
TRANSPORTATION AND TRINITY RIVER  
PROJECT COMMITTEE

April 25, 2016



US Army Corps of Engineers  
BUILDING STRONG®



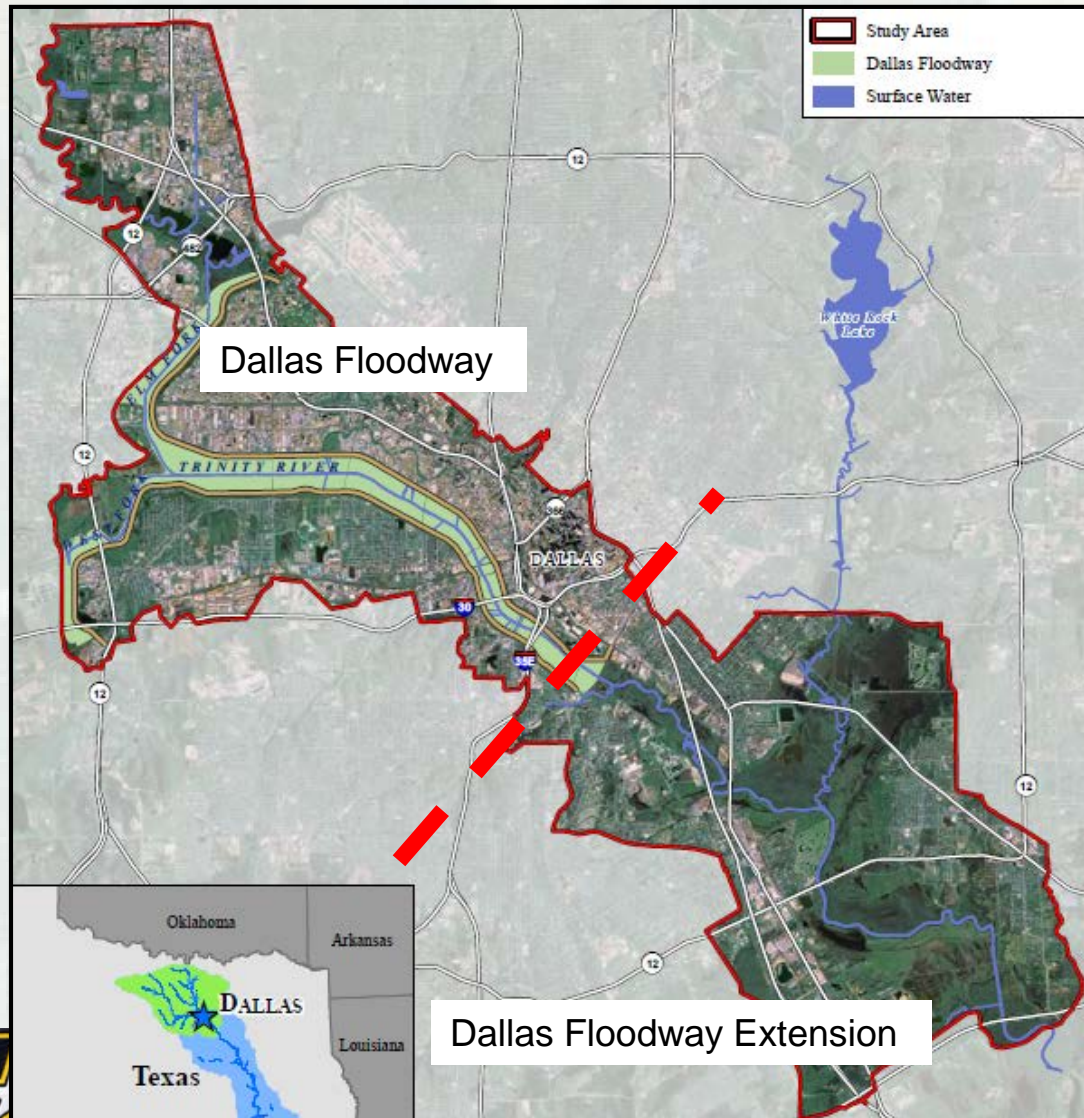


# Trinity River Corridor Project (TRCP) Briefing Outline

- Introduction of Team
- Dallas Floodway
- Dallas Floodway Extension



# TRCP Overview



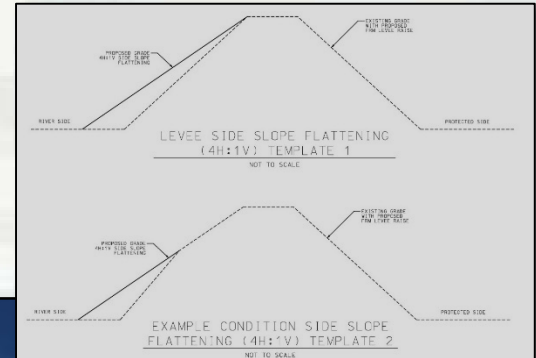
- Adjacent Federal Projects
- Important Flood Risk Management Functions
- Considerable Federal and Non-Federal Activity

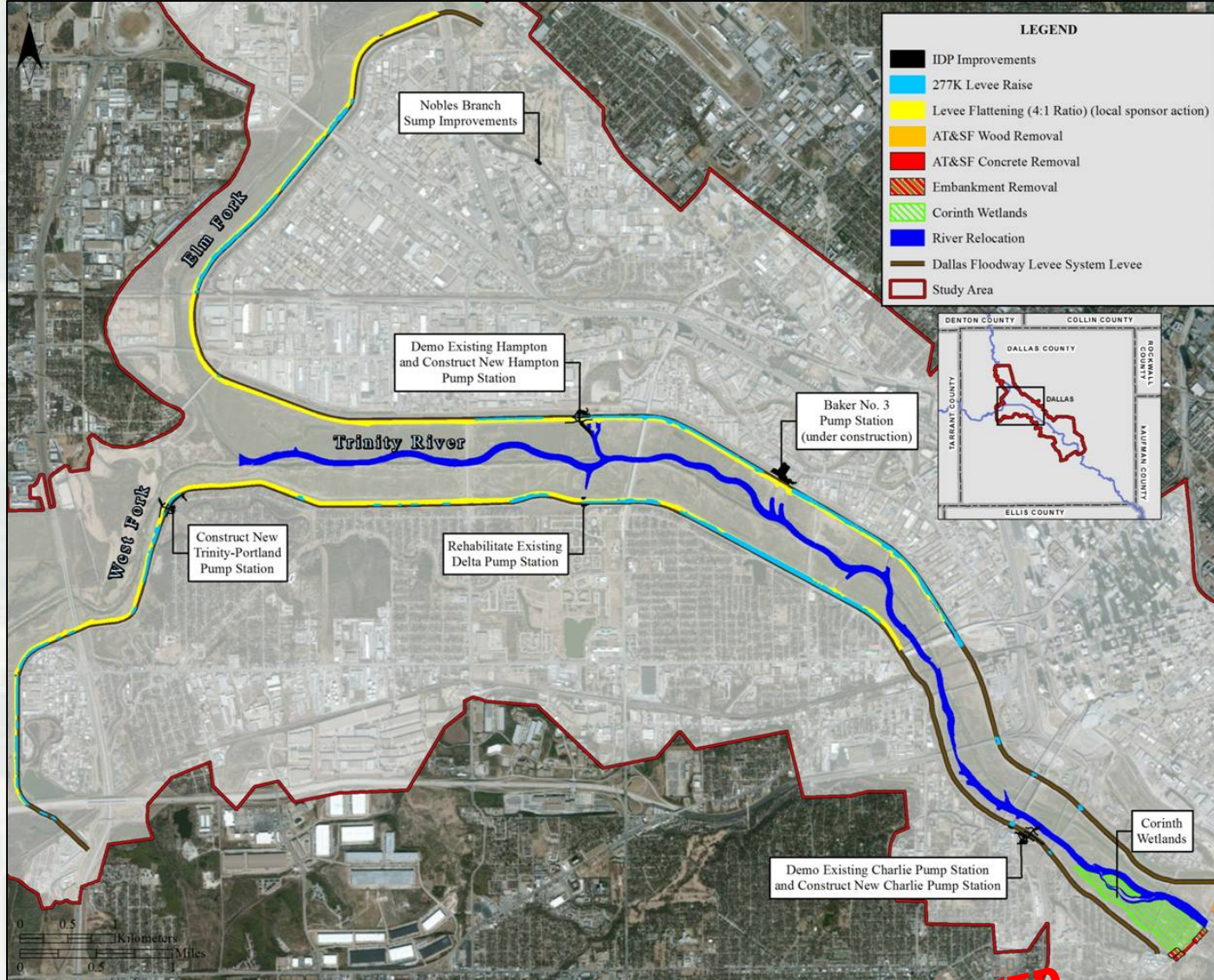




# Dallas Floodway Project Status

- Modified Dallas Floodway Project
    - Approved April 2015
      - 277K cfs Levee Raise
      - 4:1 Side Slopes
      - AT&SF Bridge Modification
      - River Relocation
      - Interior Drainage Plan (Phase I)
    - \$3.4M estimated for PED
      - Federal funding requested in 2017 President's Budget
      - No Funding received to date
      - Federal Funds to be requested in 2018 President's Budget
- Alternative non-federal funding agreement is option





- ### Flood Risk Management
- 277,000 cfs levee raise with AT&SF Bridge Modifications
  - Emergency Action Plan improvements
  - Levee side slope flattening to 4H:1V (Betterment @ 100% local cost)
- 
- ### Ecosystem Restoration
- Interior Drainage Plan Phase I - Baker and Hampton Pump Stations; Nobles Branch Sump Improvements
  - Interior Drainage Plan Phase II - Charlie, Delta, New Trinity Portland Pump Stations



**MODIFIED DALLAS FLOODWAY PROJECT - REFERENCE MAP AND RECOMMENDED PLAN**

**APPROVED**





# Dallas Floodway Operations



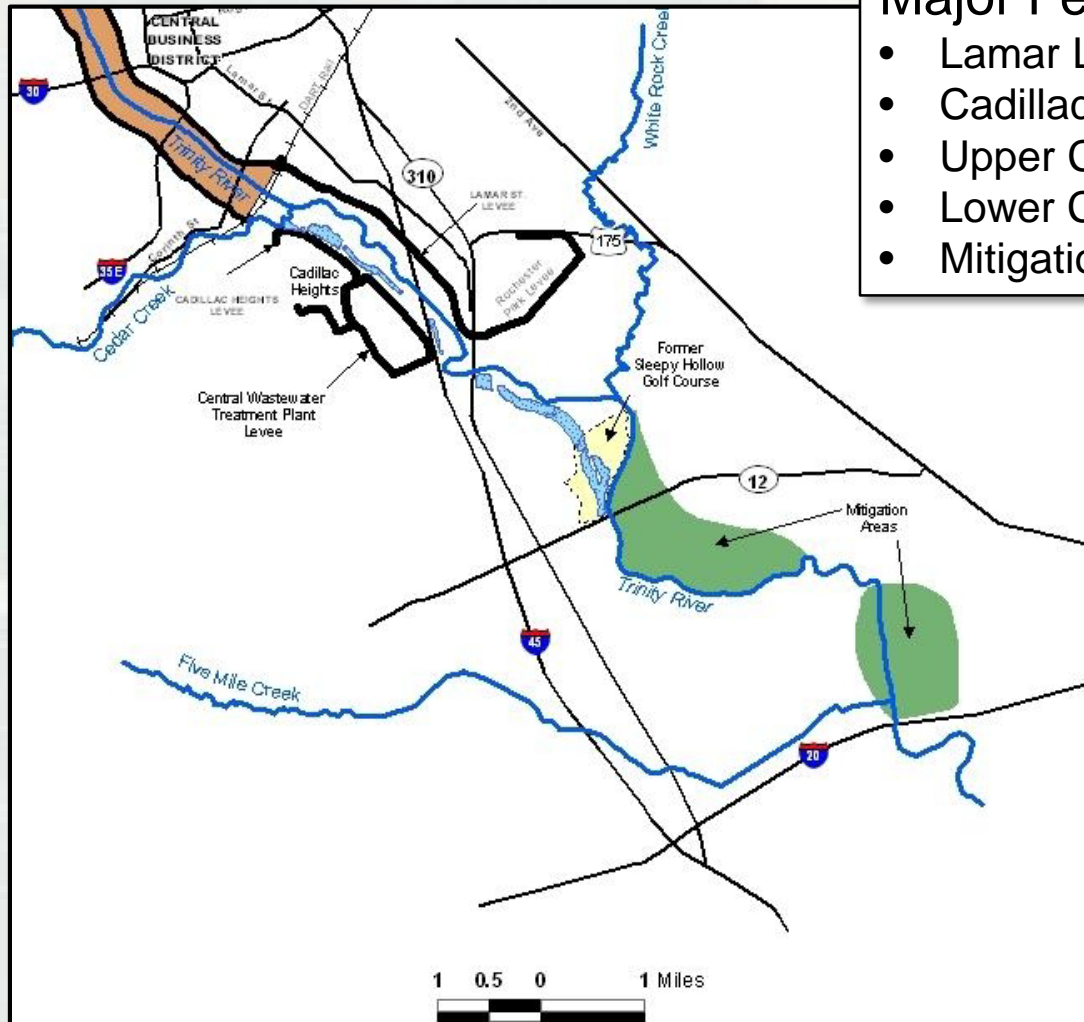
- Performing maintenance inspections
- Federal funding received for Emergency Action Plan update – LifeSim Modeling
- Monitor and provide reports related to rainfall amounts and river flows



# Dallas Floodway Extension (DFE) Overview

## Major Features of DFE:

- Lamar Levee
- Cadillac Heights Levee
- Upper Chain of Wetlands
- Lower Chain of Wetlands
- Mitigation Lands





# Dallas Floodway Extension Status

- Total of \$13 million in funding for DFE in FY15
  - Awarded Access Routes Contract
  - Awarded Erosion Repair Contract
- Received an additional \$4 million of federal funding in FY16 for erosion repair from 2015 flooding



# Dallas Floodway Extension Status

- Upper Chain of Wetlands Construction
  - Construction underway – approximately 75% complete, rain continues to delay work
  - Anticipate major earthwork complete Sep-16
- Lower Chain of Wetlands Cell 'D' Erosion
  - Construction is under significant rain delay
  - Planning for May/Jun re-mobilization
- Access Routes
  - Approximately 1.5 miles of the I-20 and Lower Chain of Wetlands (LCOW) segments built
  - Connectors segments are on hold until Upper Chain of Wetlands (UCOW) construction is complete and the real estate instruments for railroads and TXDOT are in-place.





# DFE Access Routes Status

