

Memorandum



CITY OF DALLAS

DATE June 24, 2016

TO The Honorable Members of the Transportation and Trinity River Project Committee: Lee M. Kleinman (Chair), Deputy Mayor Pro Tem Erik Wilson (Vice-Chair), Sandy Greyson, Mayor Pro Tem Monica R. Alonzo, Adam Medrano, and Casey Thomas II

SUBJECT Dallas to Houston High Speed Rail Project

On Monday, June 27, 2016, you will be briefed on the Dallas to Houston High Speed Rail Project. The briefing materials are attached for your review. All Council members are encouraged to attend this briefing to learn about this significant privately-led rail infrastructure project proposal.

Please do not hesitate to contact me if you have any questions or need additional information.

A handwritten signature in black ink, appearing to read 'Alan E. Sims'.

Alan E. Sims, Chief of Neighborhood Plus

c: Honorable Mayor and Members of the City Council
A.C. Gonzalez, City Manager
Christopher D. Bowers, Interim City Attorney
Craig D. Kinton, City Auditor
Rosa A. Rios, City Secretary
Daniel F. Solis, Administrative Judge
Ryan S. Evans, First Assistant City Manager

Eric D. Campbell, Assistant City Manager
Mark McDaniel, Assistant City Manager
Jill A. Jordan, P.E., Assistant City Manager
Joey Zapata, Assistant City Manager
Jeanne Chipperfield, Chief Financial Officer
Sana Syed, Public Information Officer
Elsa Cantu, Assistant to the City Manager – Mayor & Council



**TEXAS
CENTRAL**



Dallas to Houston High Speed Rail Project

Dallas City Council

Transportation and Trinity River Project Committee

June 27, 2016



Briefing Purpose

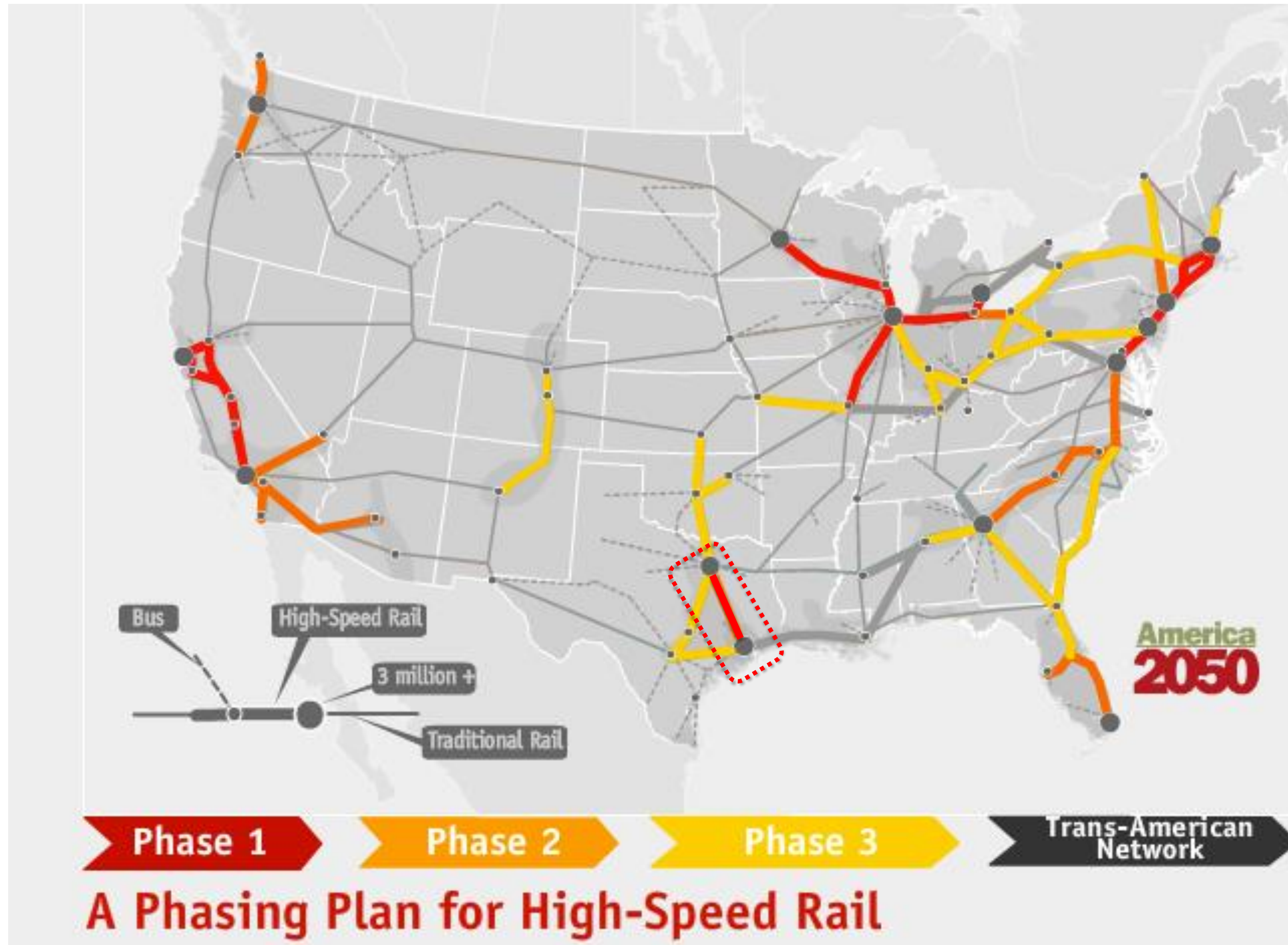
- *Provide an overview of the Texas Central high speed rail proposal between Dallas to Houston*
- *Discuss the framework for a preliminary agreement between the City and Texas Central to address project coordination during the federal review process*

Unique Private Rail Infrastructure Project

- ***Dallas to Houston High Speed Rail has been on the City's radar for a few years:***
 - *Highlighted as a potential catalytic economic development opportunity in the Downtown Dallas 360 Plan adopted by City Council in 2011*
 - *Supported in the most recent Council adopted federal and state legislative programs*



National View of Passenger Rail Projects



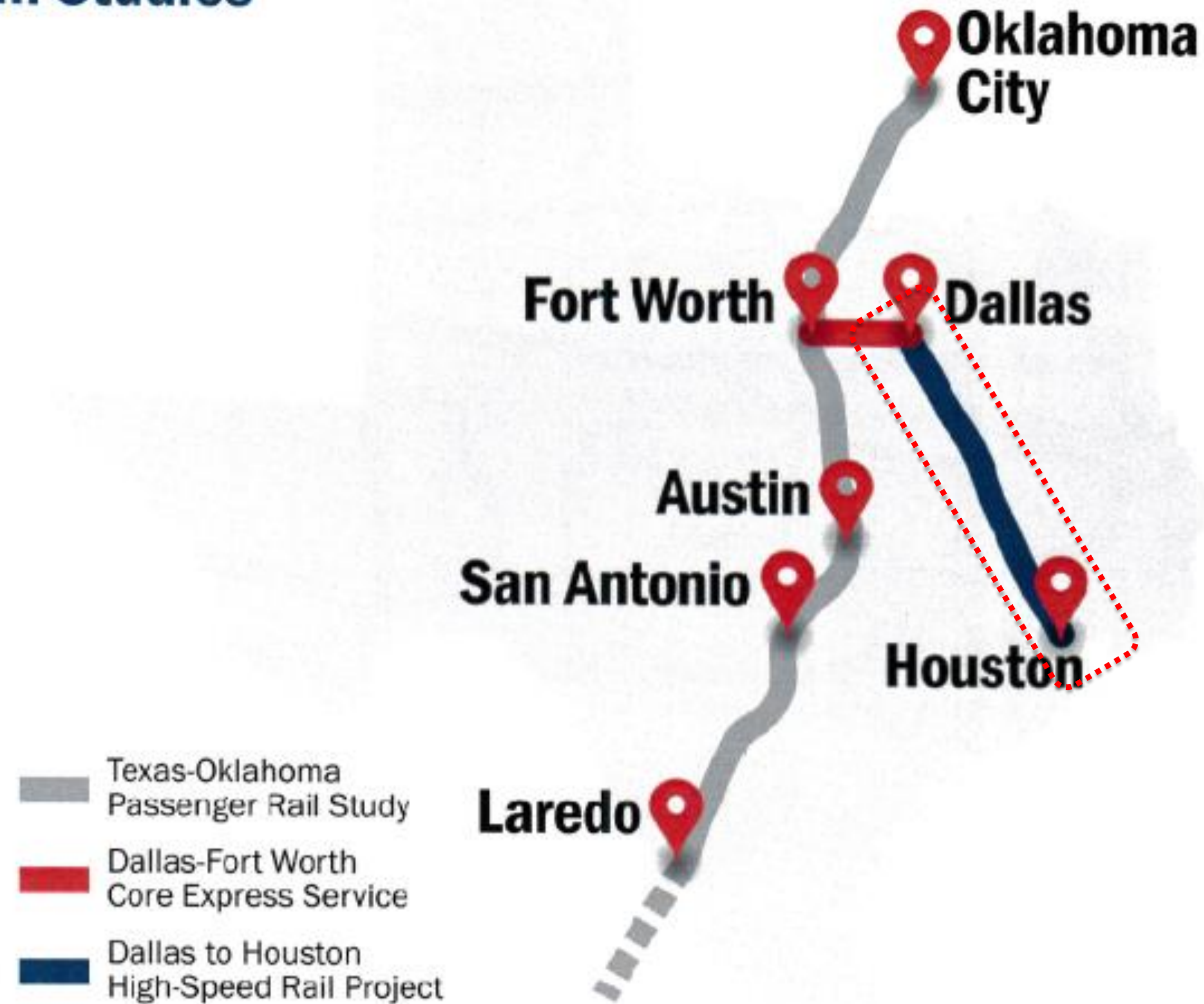
Map produced by America 2050

America 2050 is Regional Plan Association's national infrastructure planning and policy program, providing leadership on a broad range of transportation, sustainability and economic development issues impacting America's growth in the 21st century.

<http://www.america2050.org/>

Three Separate Ongoing Texas Passenger Rail Projects

Related Passenger Rail Studies



Three Separate Ongoing Texas Passenger Rail Projects

Texas Oklahoma City Passenger Rail Study

- Oklahoma City to South Texas
- Evaluating a range of possible passenger rail service options
- Program-level EIS
- FRA/TxDOT co-lead agencies
- Study funded by federal grant

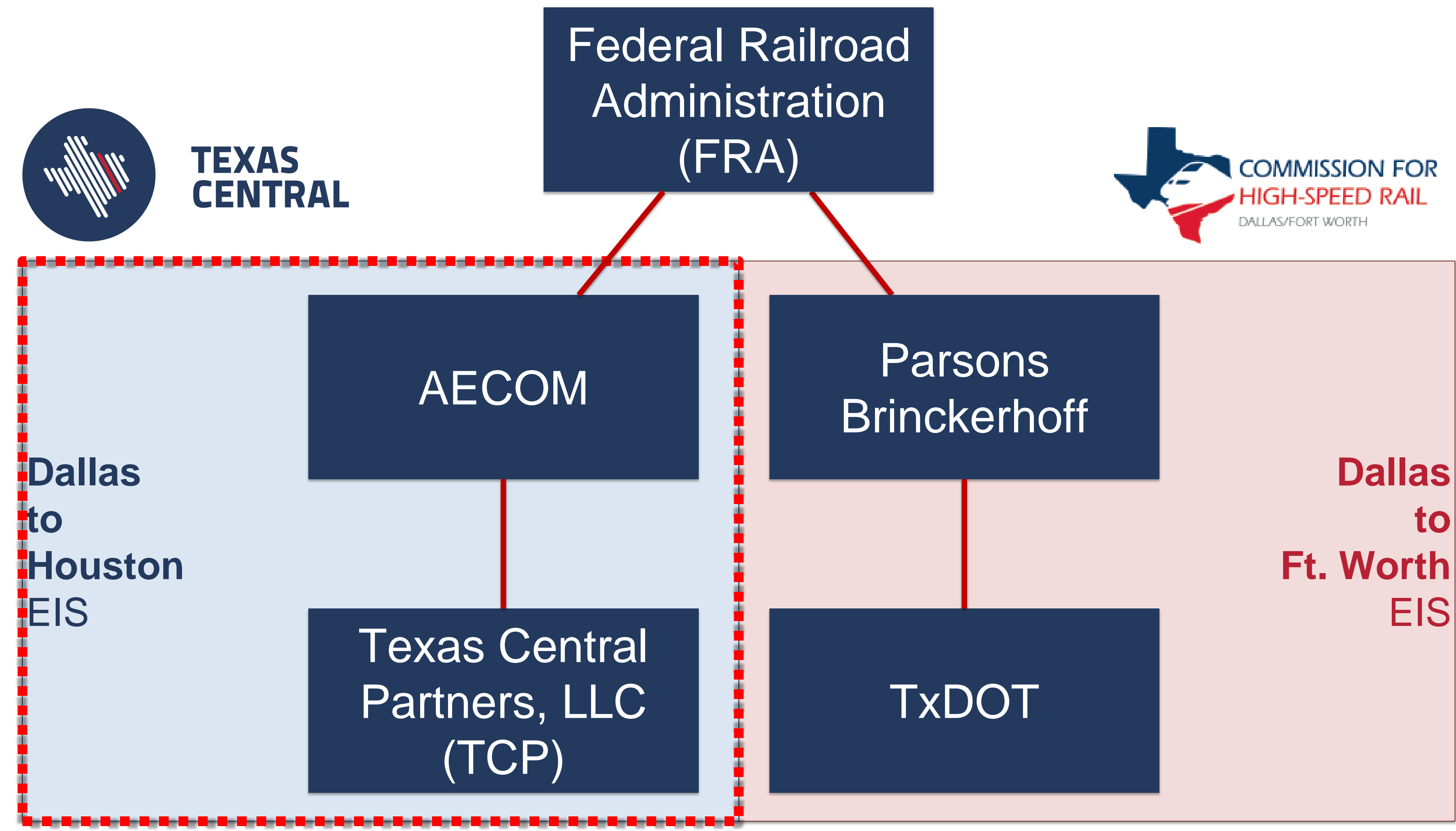
Dallas – Fort Worth Core Express Service

- Dallas to Fort Worth high-speed passenger rail service
- Project-level EIS
- FRA/TxDOT serve as co-lead agencies
- Study funded by federal grant
- No funding for implementation

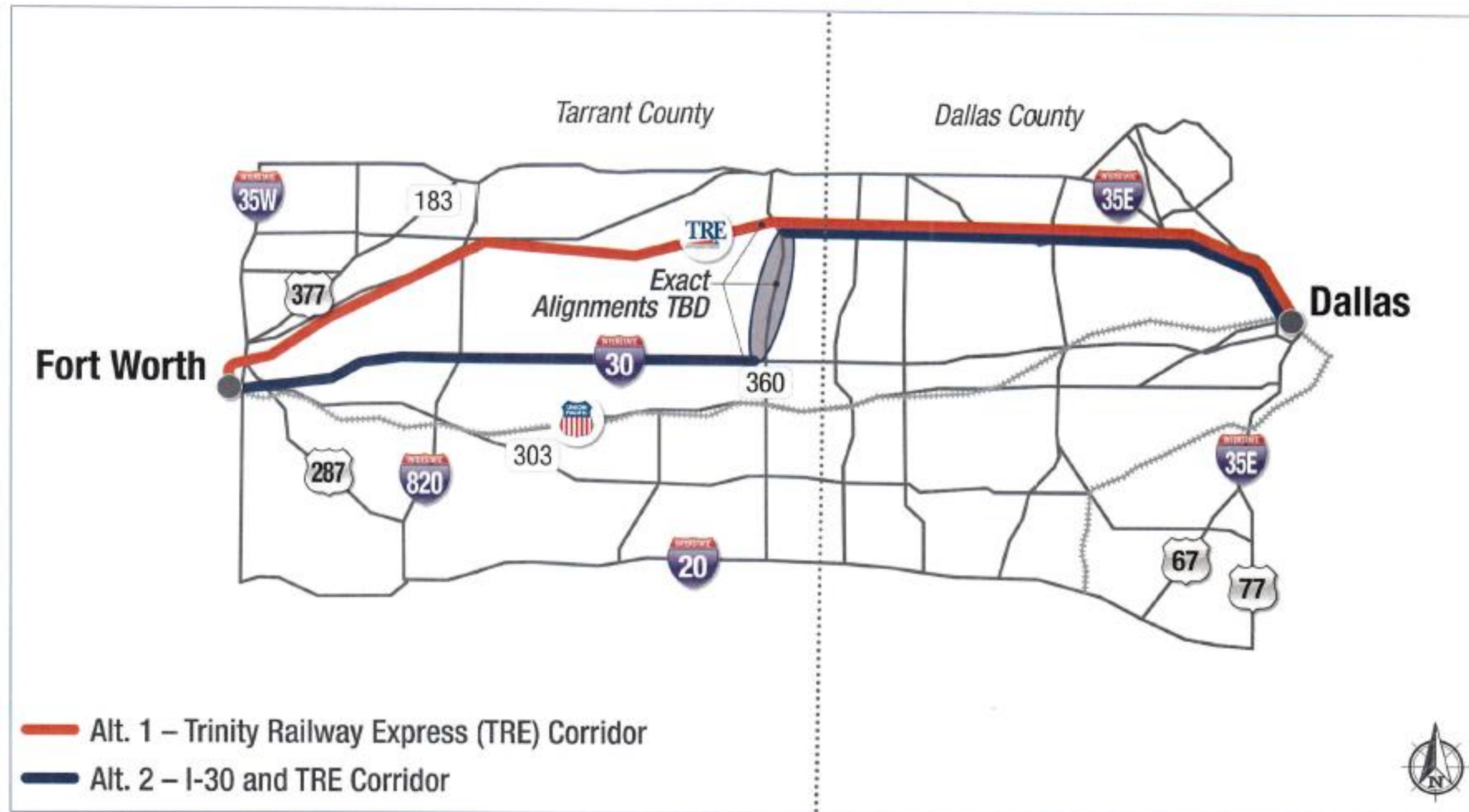
Dallas to Houston High-Speed Rail

- Dallas to Houston high-speed passenger rail service
- Project-level EIS
- FRA is lead agency
- Texas Central Railway – private proponent
- EIS effort privately funded

Two Concurrent Environmental Impact Statements



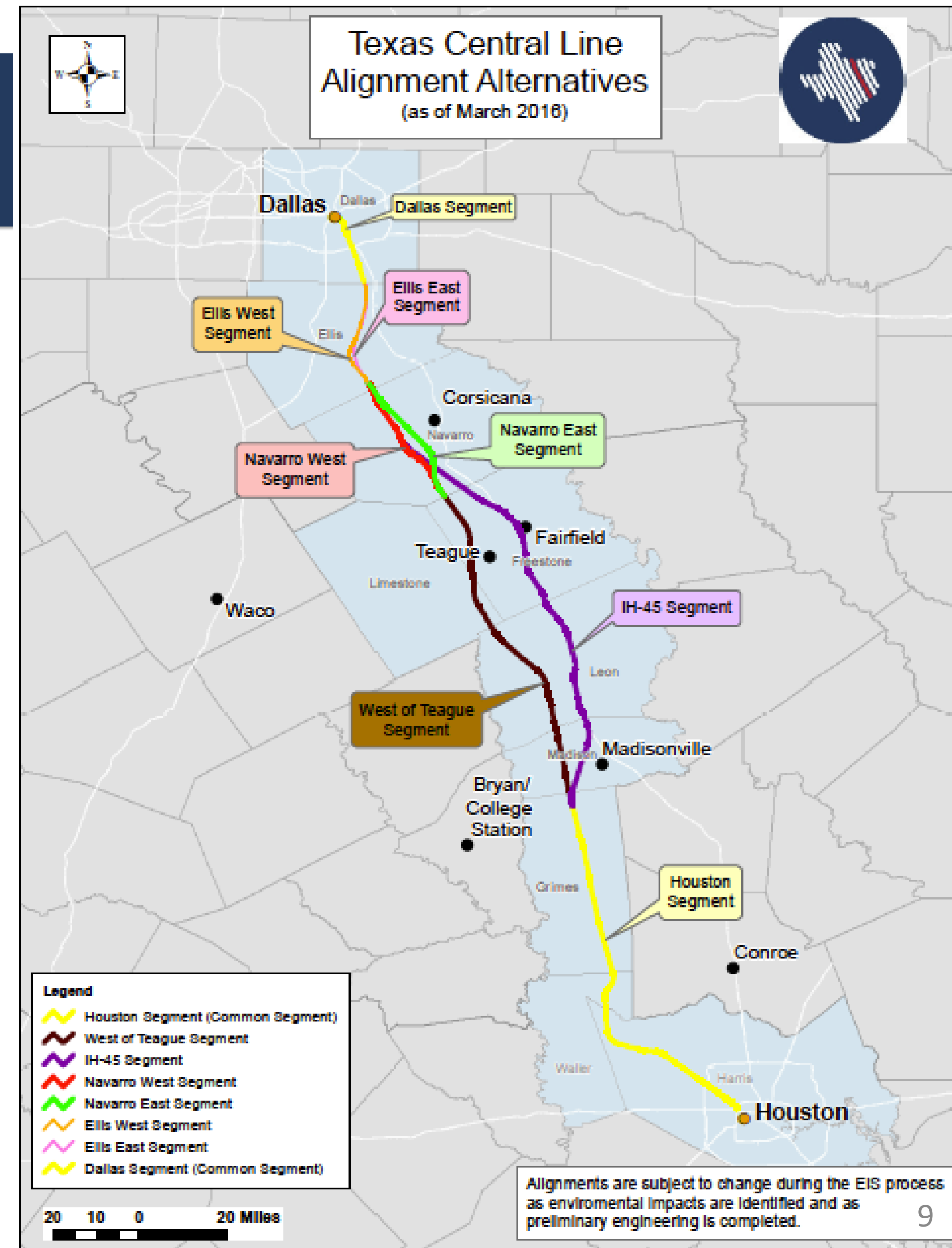
Dallas – Fort Worth Core Express



- *Dallas-Fort Worth Core Express project is being advanced independently of the Dallas to Houston project*
- *On June 16, 2016, the Regional Transportation Council (RTC) approved a memorandum of understanding with Texas Central to maximize the opportunity for connectivity between the two projects*

Dallas to Houston High Speed Rail

- Alignments are currently under review with the Federal Railroad Administration (FRA).
- Additionally, alignment review will be necessary by the United States Army Corps of Engineers (USACE)



TEXAS DOES BIG THINGS





TRAINS WILL TRAVEL
AT SPEEDS NEARLY

200

MILES
PER HOUR

WILL
SERVE

3

STATIONS

DALLAS, BRAZOS VALLEY
AND HOUSTON

TRAINS WILL
LEAVE EVERY

30

MINUTES

DURING PEAK HOURS



NORTH TEXAS TO HOUSTON
IN LESS THAN 90 MINUTES





INDUSTRY CREATION

CREATE AS MANY AS

10000

FULL-TIME JOBS

ONCE OPERATIONAL



**A SIGNIFICANT INVESTMENT
WITH BENEFITS ACROSS TEXAS**

\$10 **BILLION**

INVESTMENT

from the project's
infrastructure, design
and construction

\$36 **BILLION**

DIRECT IMPACT

from the economic
benefits the project will
generate over the
next 25 years

\$2.5 **BILLION**

TAX REVENUE

estimated to be paid by the
company to the state, counties,
local municipalities and
school districts

Creating a total of 40,000 jobs

with as many as 1,000 full-time once operational

ECONOMIC BENEFITS FOR THE CITY OF DALLAS

\$750 **MILLION**

INVESTMENT

in the City of Dallas from the project's infrastructure, design and construction

\$225 **MILLION**

TAX REVENUE

estimated to be paid by the company to the City of Dallas through 2040

Our Vision for the Station Area



POPULATION GROWTH + TRAFFIC CONGESTION =

NEED FOR RAIL



RELIABLE/CONVENIENT
COMFORTABLE
PRODUCTIVE



TEXAS
CENTRAL



VARIABLE
PRICING
BASED ON
DEMAND



400
SEATS OPEN
EVERY
30 MINUTES



TEXAS
CENTRAL

- Texans investing in the big idea
- Pursuing regulatory approvals
- Working with Partners and Communities

BUILDING ON MOMENTUM:
FROM IDEA TO REALITY



**RULE OF
PARTICULAR
APPLICABILITY**

**ENVIRONMENTAL
IMPACT
STATEMENT**



COMMUNICATING WITH STAKEHOLDERS AND COMMUNITIES

12

SCOPING MEETINGS

23

OPEN HOUSES
from North Texas to Houston

Approximately

300

SPEAKING ENGAGEMENTS
Last Year by Company Officials



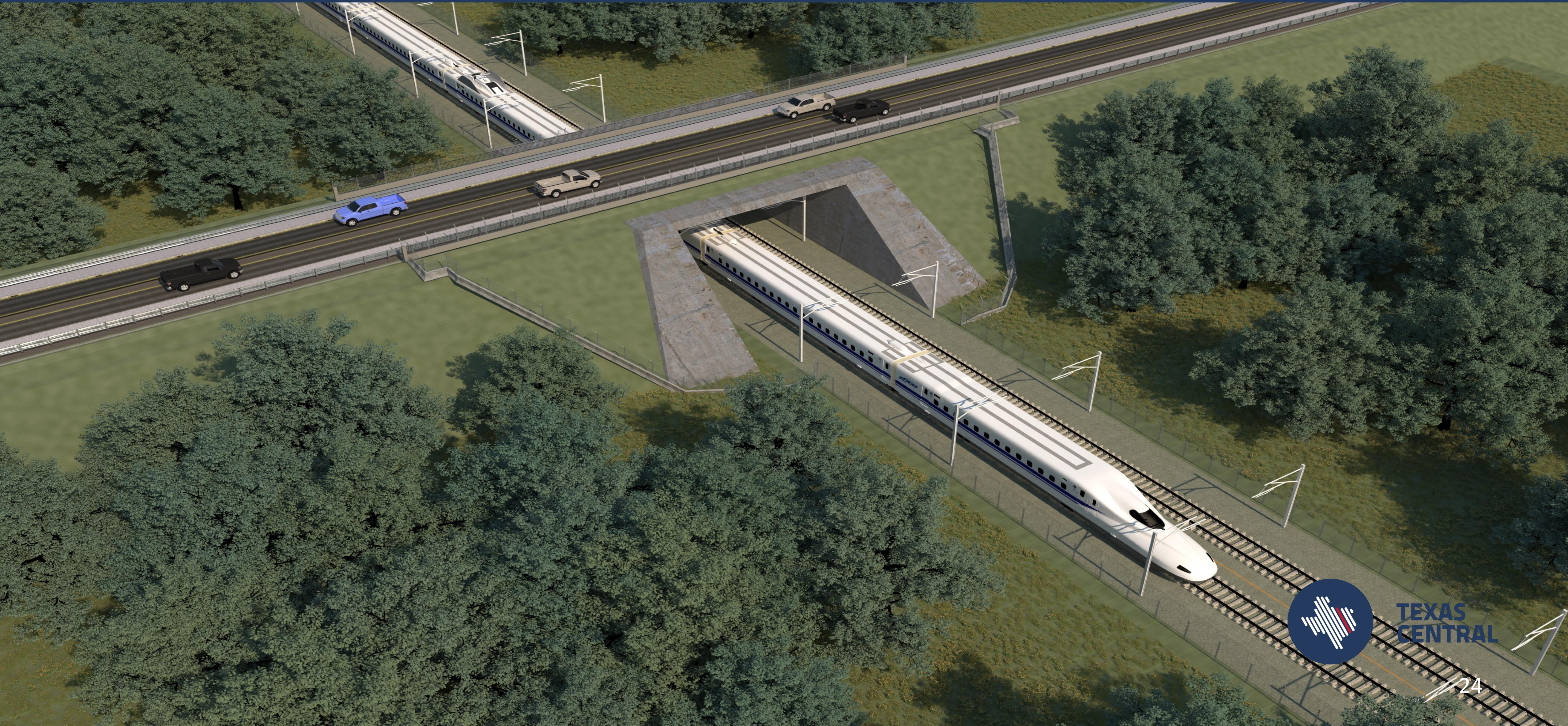
TEXAS
CENTRAL

Typical Alignment Along Utility Corridor



TEXAS
CENTRAL

Typical Rail Crossing Under Rural Roadway



TEXAS
CENTRAL

Typical Rail Crossing Over Rural Roadway



TEXAS
CENTRAL

Dallas Approach – Crossing of Loop 12



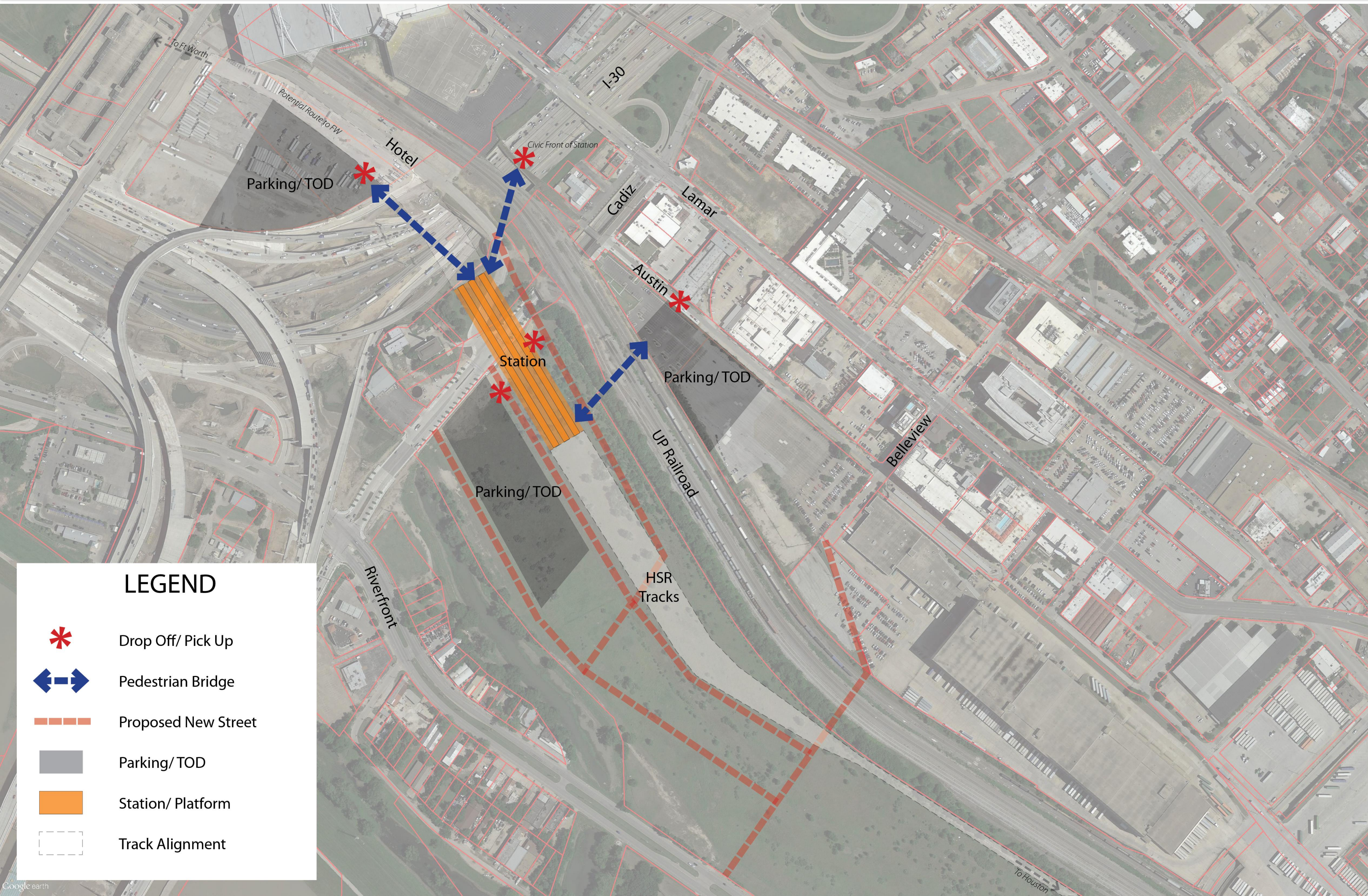
TEXAS
CENTRAL

Dallas Approach – Near Downtown









**TEXAS
CENTRAL**

Proposed Dallas Station – Conceptual Layout



LEGEND

-  Drop Off/ Pick Up
-  Pedestrian Bridge
-  Proposed New Street
-  Parking/ TOD
-  Station/ Platform
-  Track Alignment



**TEXAS
CENTRAL**

Prototypical Maintenance Facility



- A maintenance facility is anticipated at each end of the line, bringing high skilled job opportunities.
- Specific sites have not been identified yet.



Dallas to Houston Project Schedule

- May 2016 Draft EIS Materials submitted to FRA
- Fall 2016 Draft EIS released by FRA
- Fall 2016 Draft EIS Public Hearings
- Nov. 2016 Draft 408 Permit submittal to USACE
- Summer 2017 Final EIS Submittal to FRA
- Dec. 2017 Anticipated FRA EIS Record of Decision
- End of 2017 Anticipated USACE permit approvals
- End of 2017 Begin construction
- 2022 First full year of operations



City of Dallas Coordination Team

- ***Regular coordination meetings with Texas Central have been initiated with key departments:***
 - *Planning and Urban Design*
 - *City Attorney*
 - *Trinity Watershed Management*
 - *Dallas Water Utilities*
 - *Public Works (Inter-agency coordination)*
 - *Dallas Convention Center*
 - *Inter-Governmental Services*
 - *Economic Development*
 - *Dallas Convention Center*
 - *Sustainable Development and Construction*
 - *Police*

Two Project Components

- ***Railroad infrastructure project: Primary focus of the federal review process***
 - *Rail alignment*
 - *Station platform*
- ***Rail-related economic development: Pertinent to City of Dallas, though not the focus of federal review process***
 - *Station area development immediately adjacent to and in the vicinity of the station*
 - *Other potential local and regional economic development opportunities and impacts*

Potential Rail Infrastructure Considerations

- *Use of City property*
- *Trinity Corridor crossing: Levees, river, wetlands, parkway*
- *Roadway crossings: highways, thoroughfares, local roads*
- *Utility impacts including potential relocations*
- *Drainage issues*
- *Speed and sound impacts and mitigation*
- *Residential impacts*
- *Homeland security issues*
- *Private property acquisitions*

Potential Economic Development Considerations

- *Use of Convention Center Lot E*
- *Multi-modal access and linkages to the station including pedestrian, bike, vehicular, light rail, and regional rail*
- *Station area amenities*
- *Parking, ground transportation and traffic management*
- *Zoning and development permitting*
- *Homeland security and law enforcement coordination*
- *Potential location of maintenance and production facilities*
- *Potential job creation opportunities*
- *Wage rate and MWBE participation*

Preliminary Agreement Needed with Texas Central

- *To establish a fund to enable Texas Central to pay for City and federal staff and consultant expenses incurred in the expedited review of federal, state and local permits*
- *To authorize the City to enter into a Section 214 agreement with the United States Army Corps of Engineers (USACE) for expedited review of Texas Central's project without presumption of City pre-approval of this project*
- *To affirm Texas Central's commitment to participate in City-hosted community engagement meetings during the planning process*
- *To agree to negotiate terms for future agreements to be considered by City Council related to the design, construction, operation and maintenance of the Texas Central high speed rail project and associated economic development*

Next Steps

- *City Council action on August 10, 2016 to authorize the City Manager to execute a preliminary agreement with Texas Central*
- *Ongoing staff review and coordination meetings with Texas Central*
- *Coordination with Texas Central on community engagement*
- *Brief Council Committee again prior to submittal of federal or state permits*
- *Seek Council action to provide official support of the proposed project alignment and to authorize additional agreements with Texas Central as needed*



**TEXAS
CENTRAL**

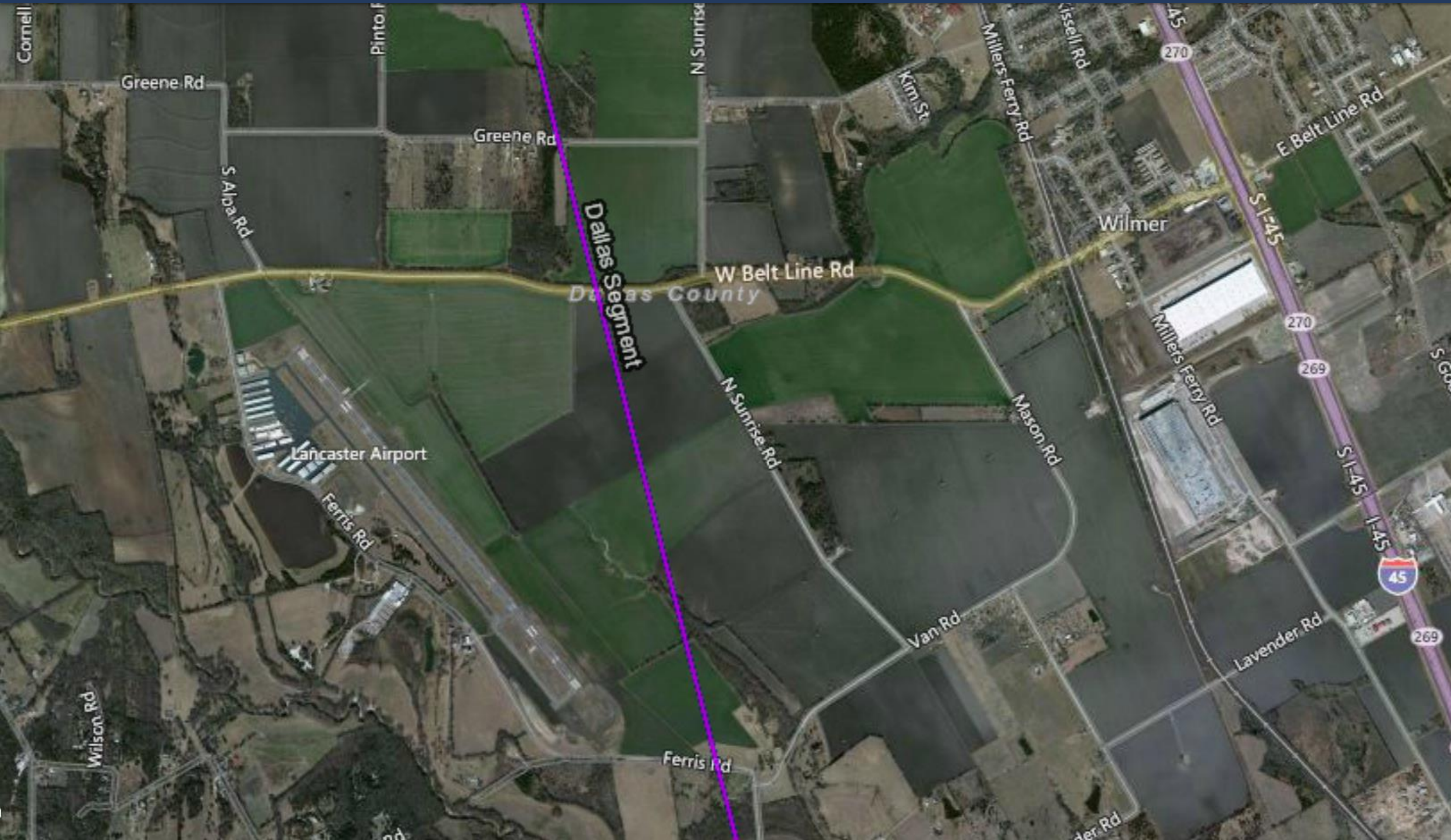


Questions and Answers

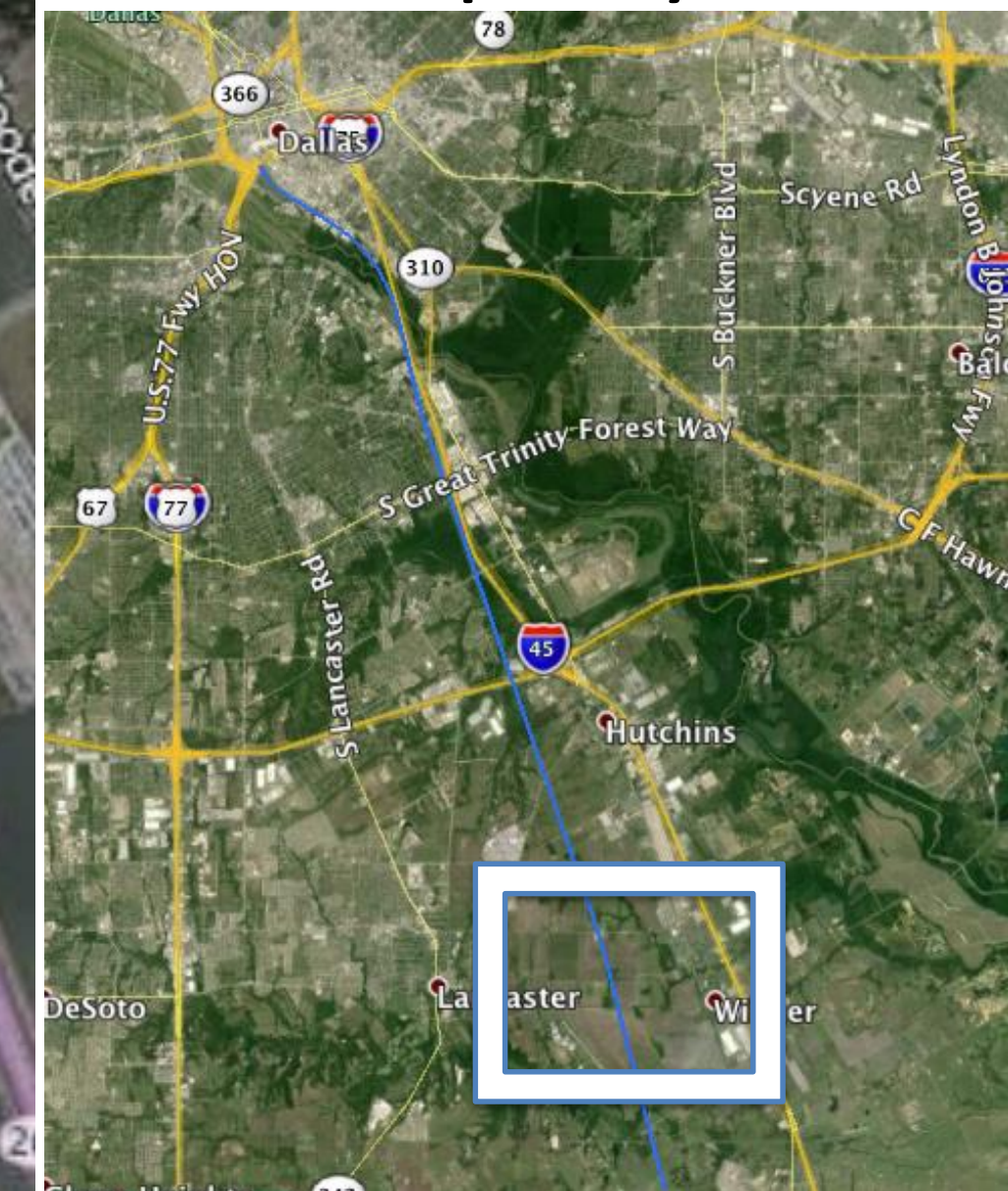
Appendix A – Alignment Segments

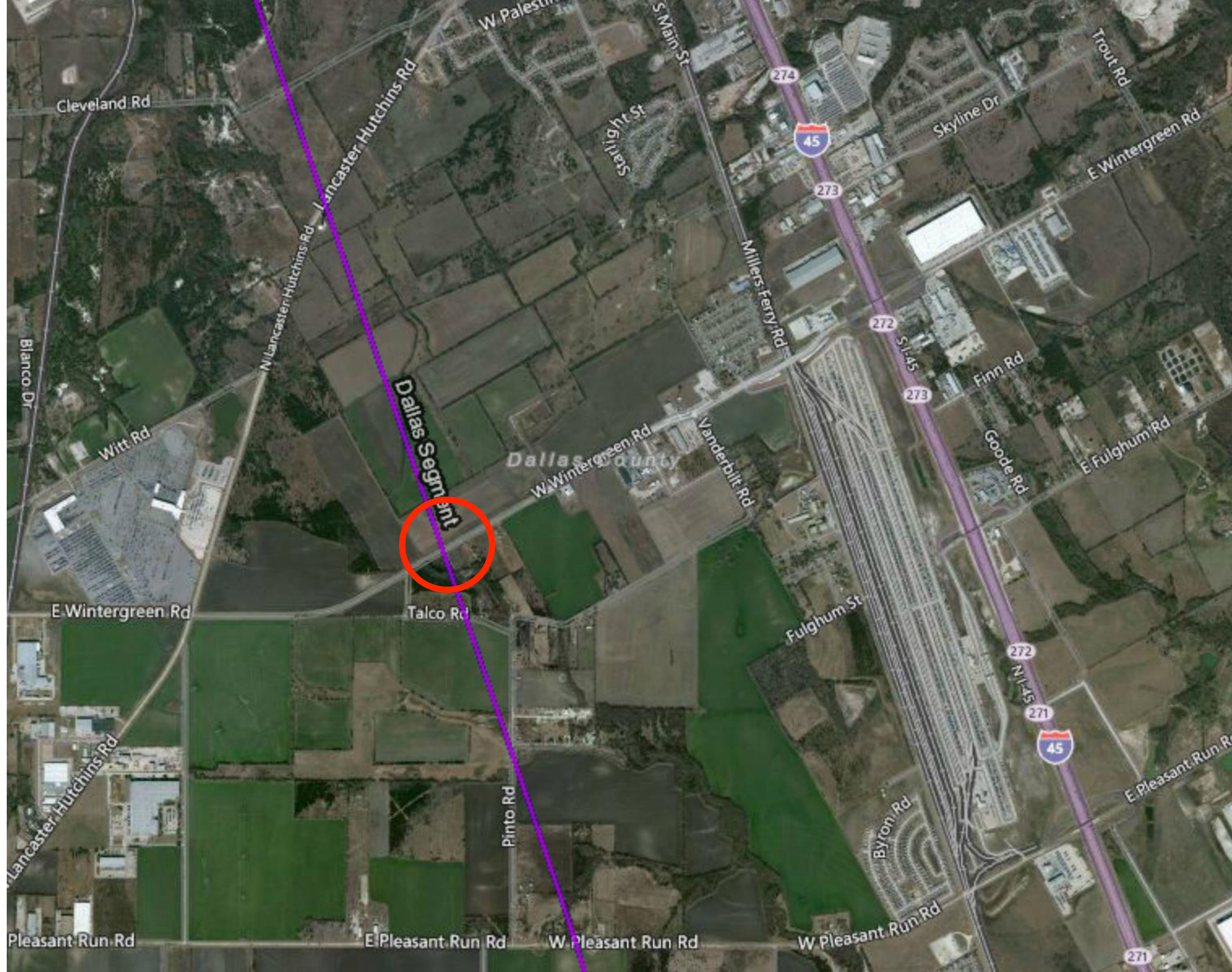
*Areas of Interest Along the Alignment
Approach to Dallas*

Key Alignment Sections - City of Dallas

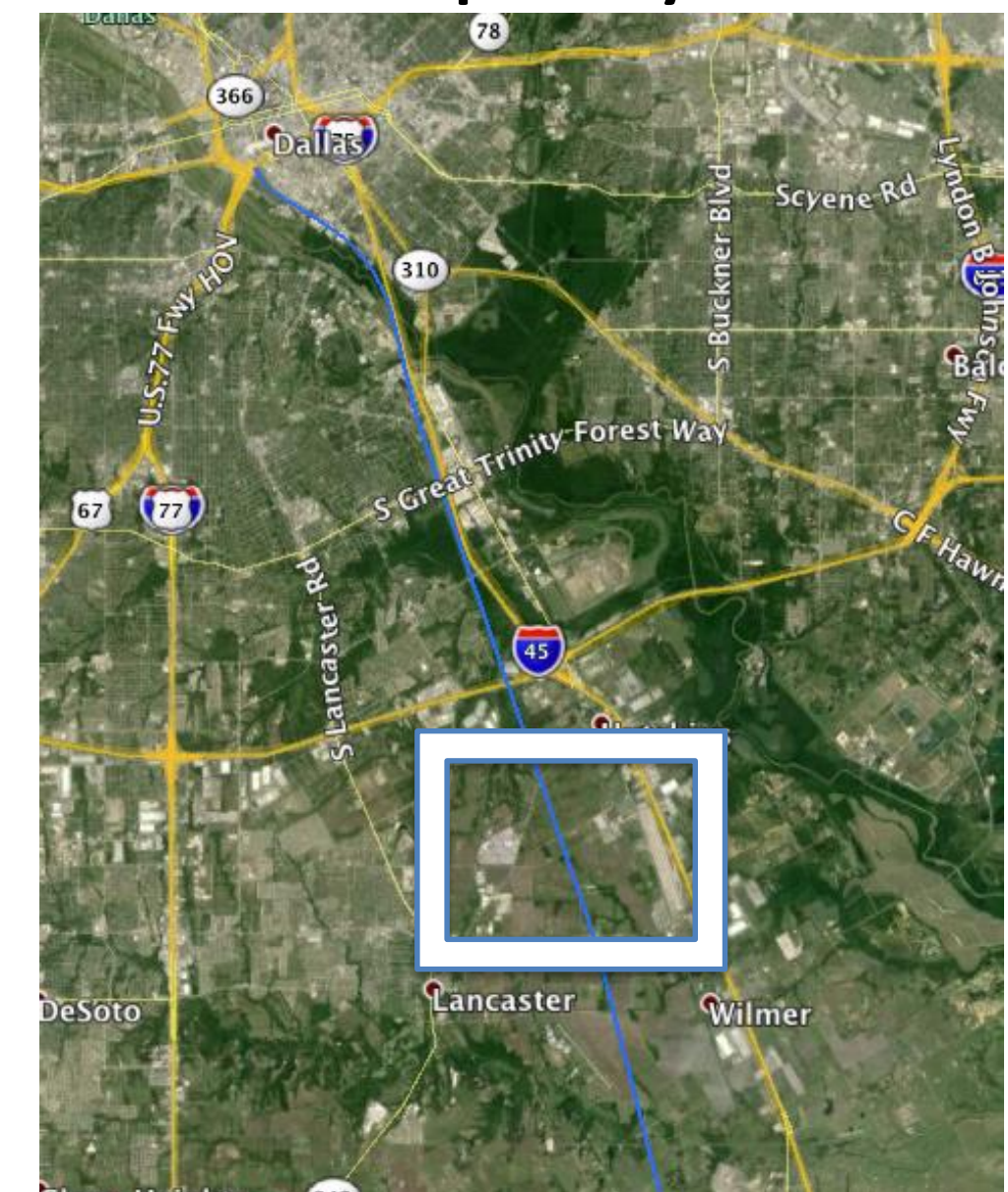


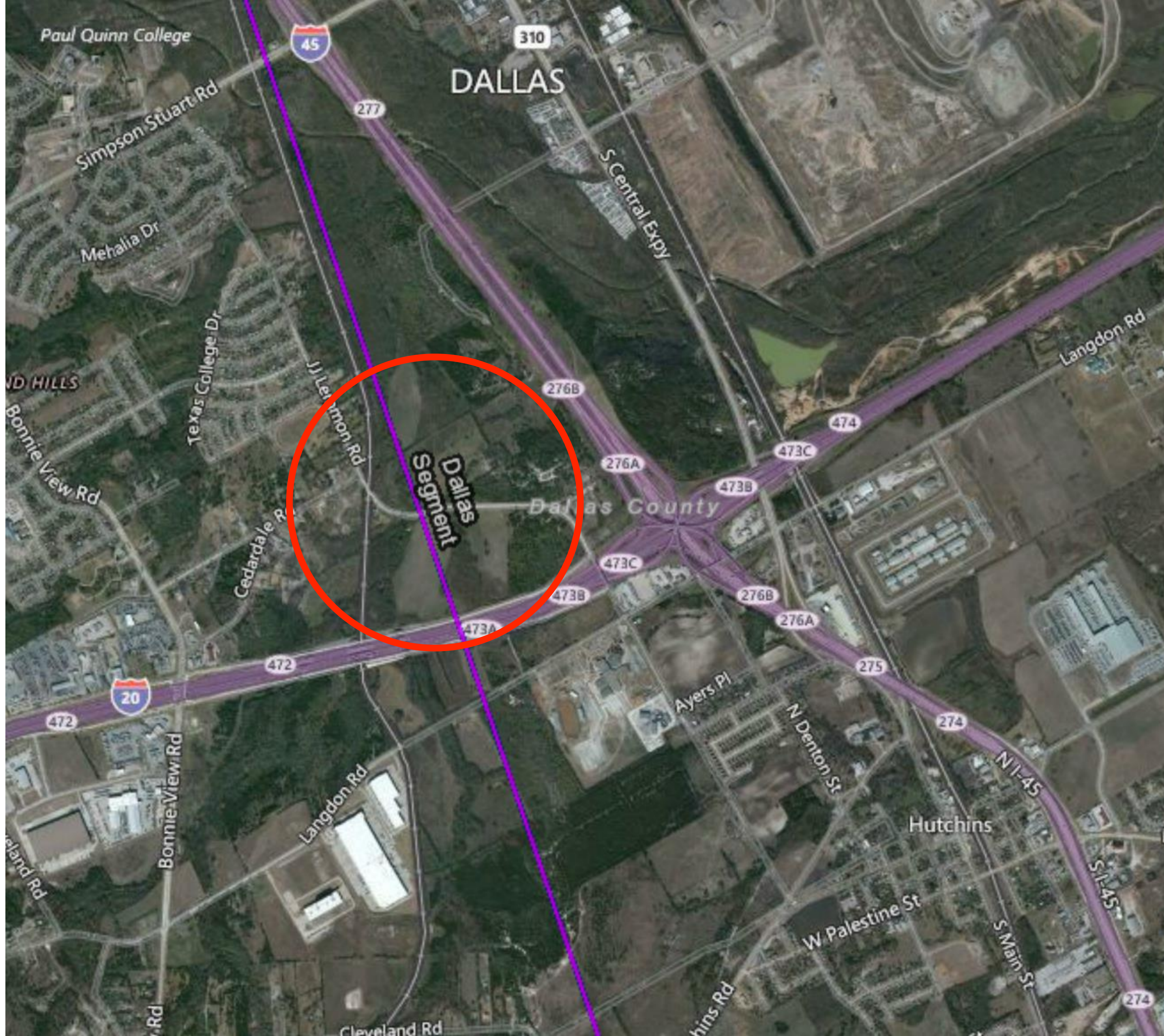
Map Key



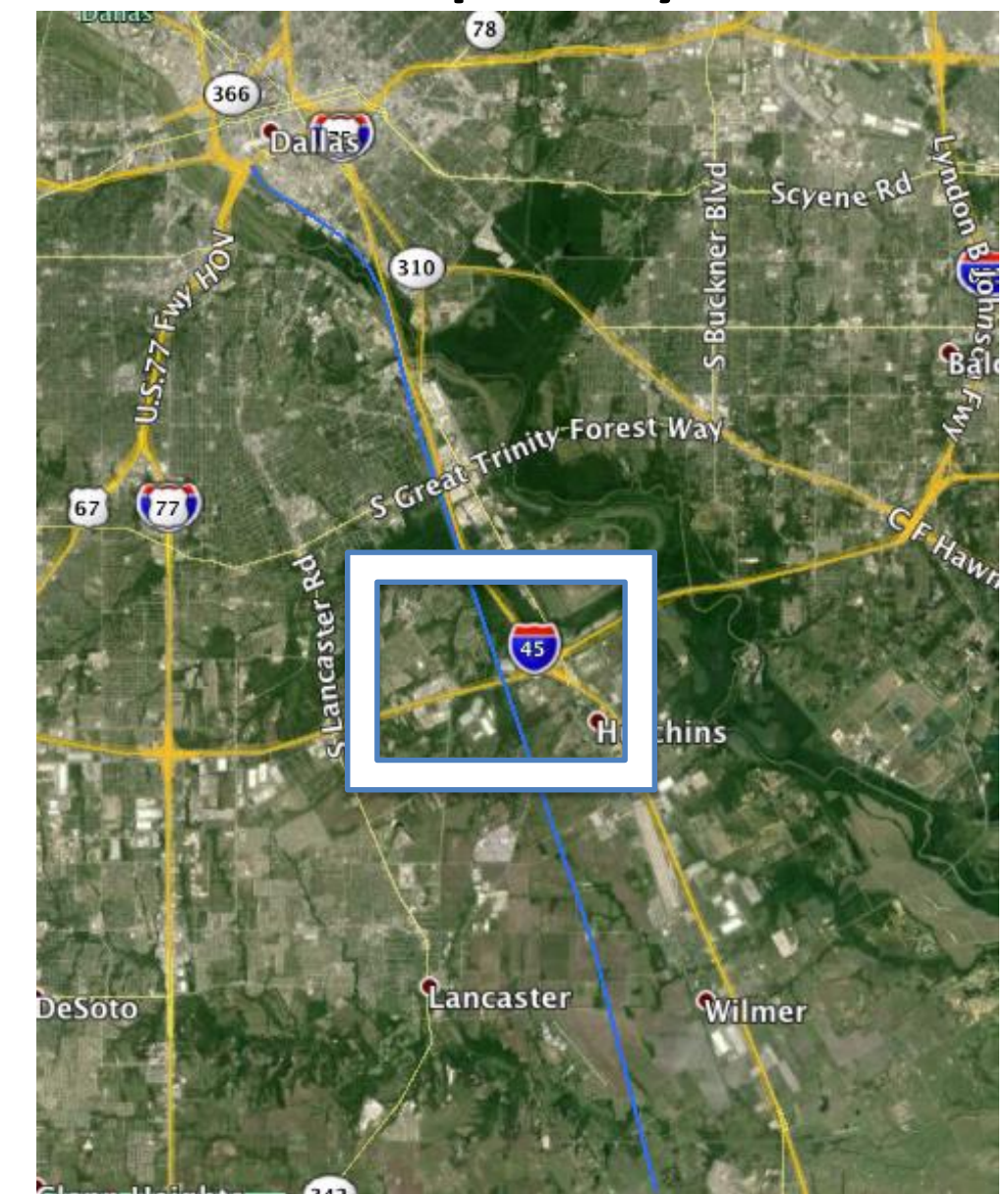


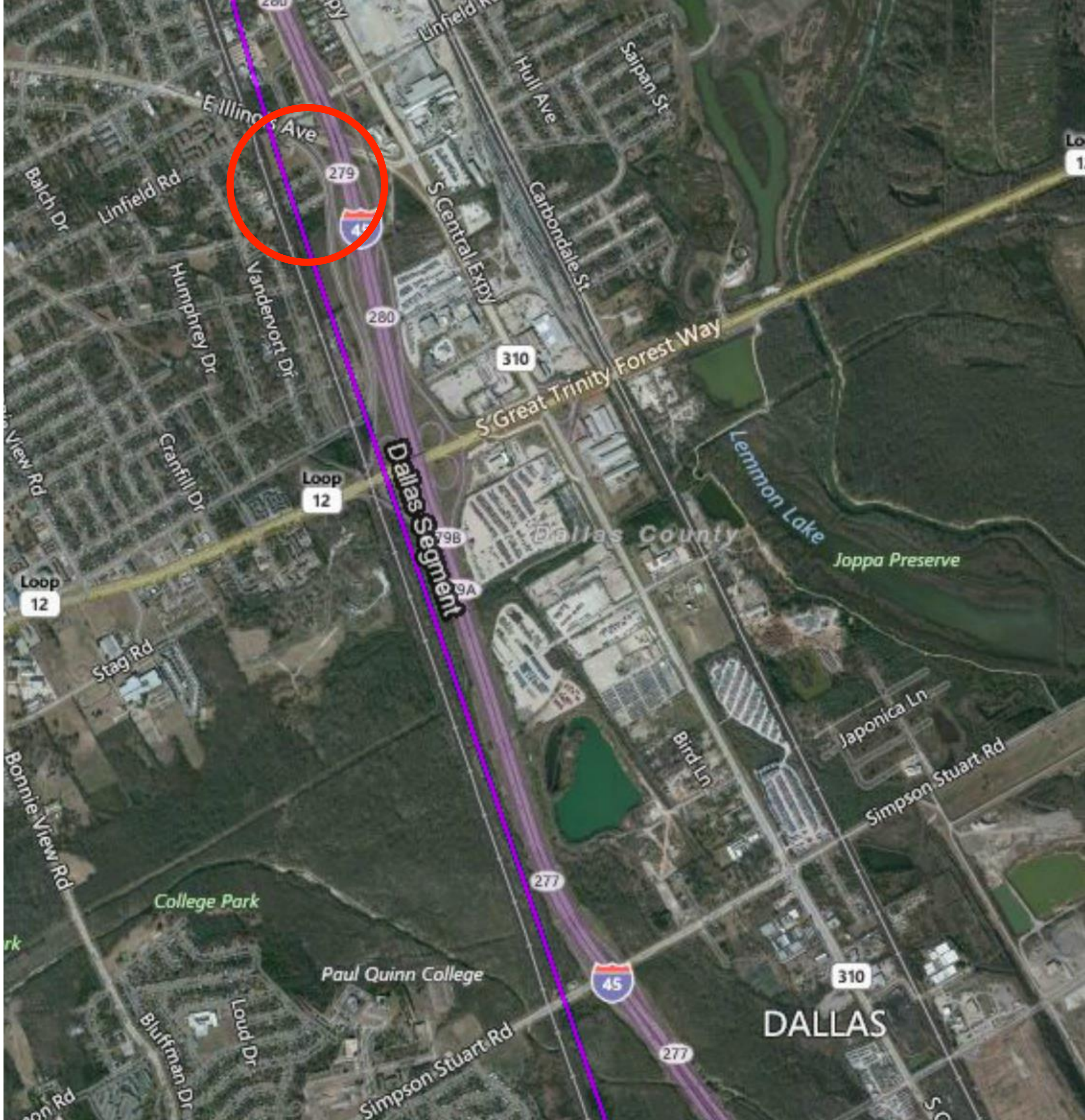
Map Key



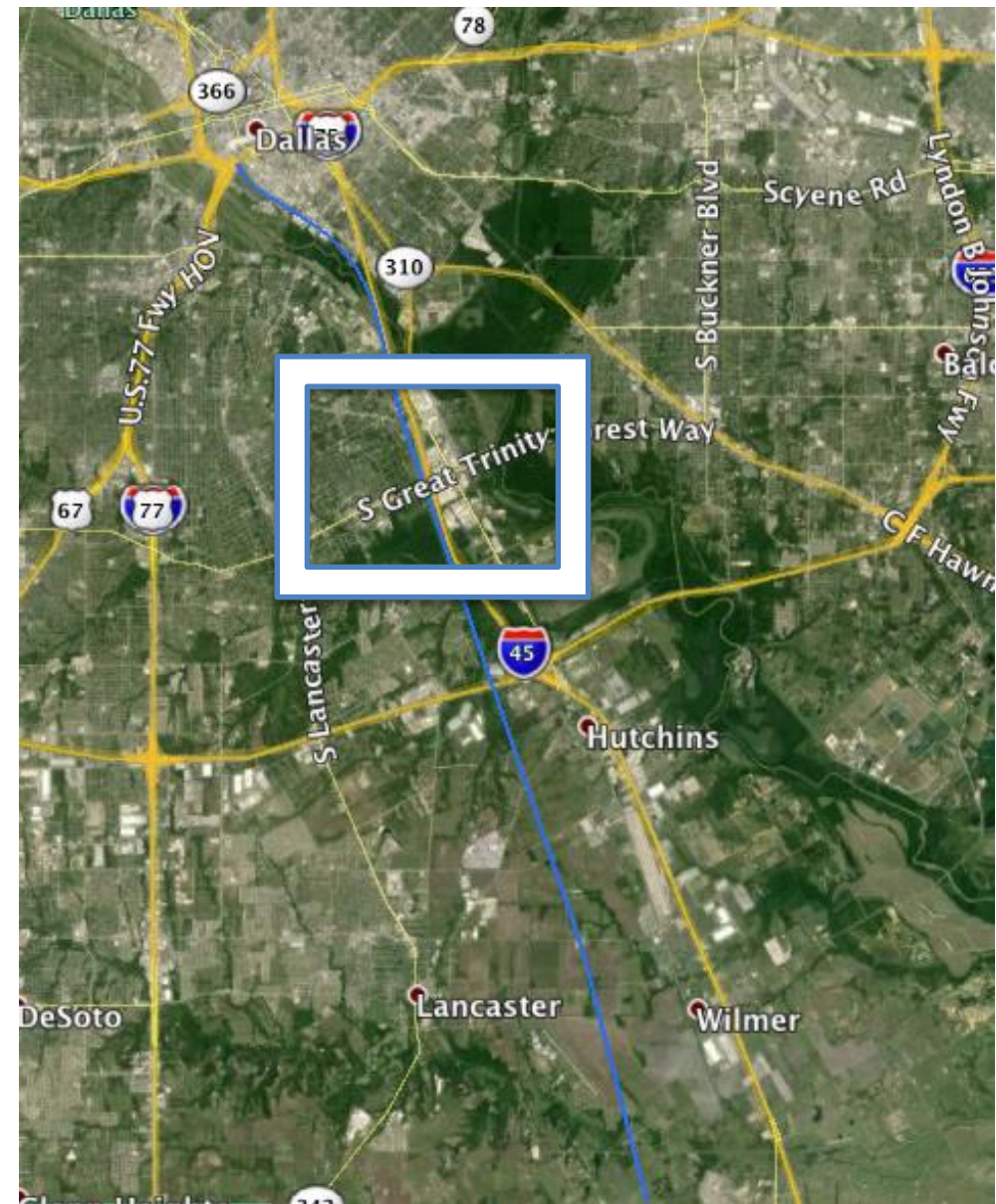


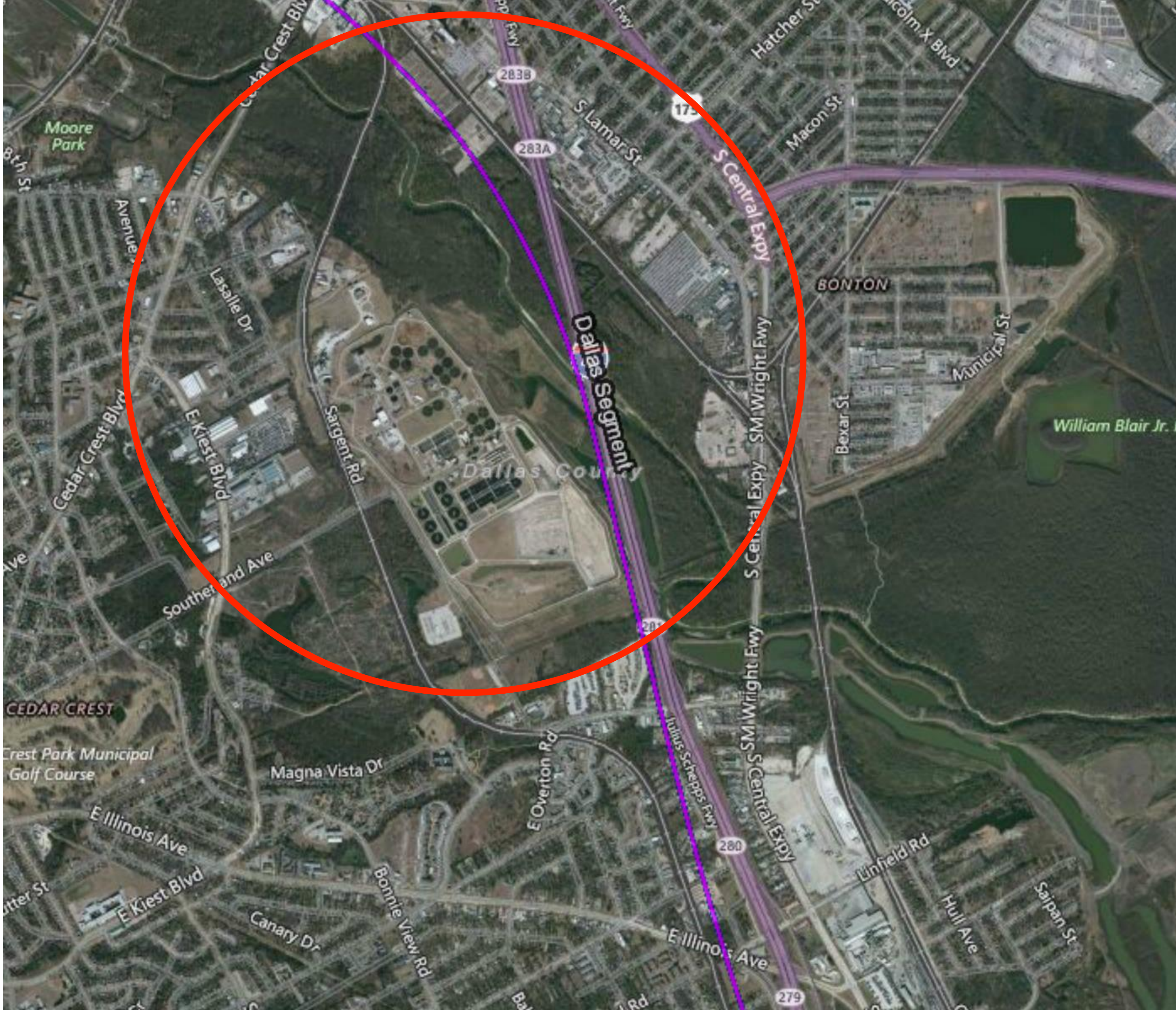
Map Key



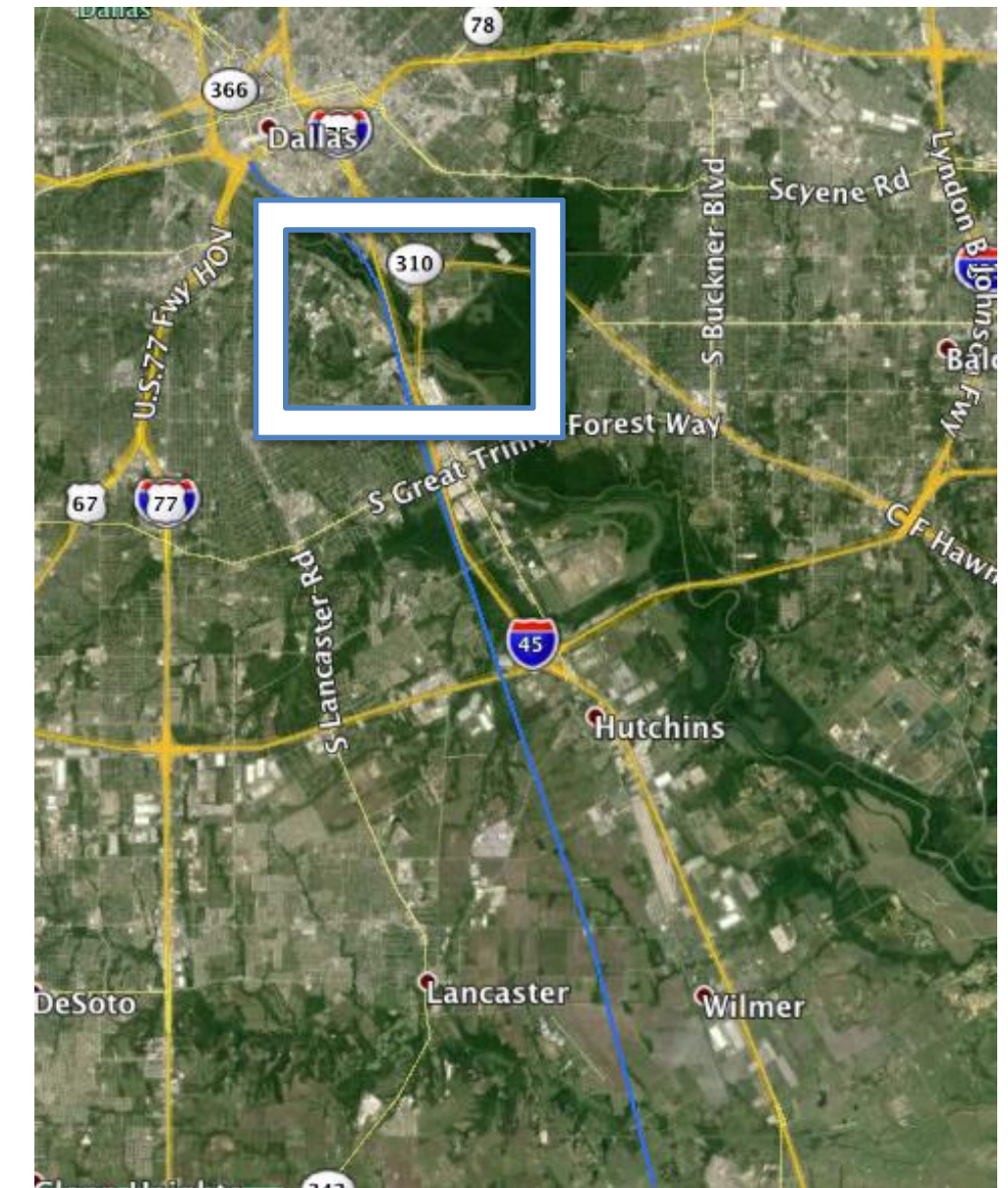


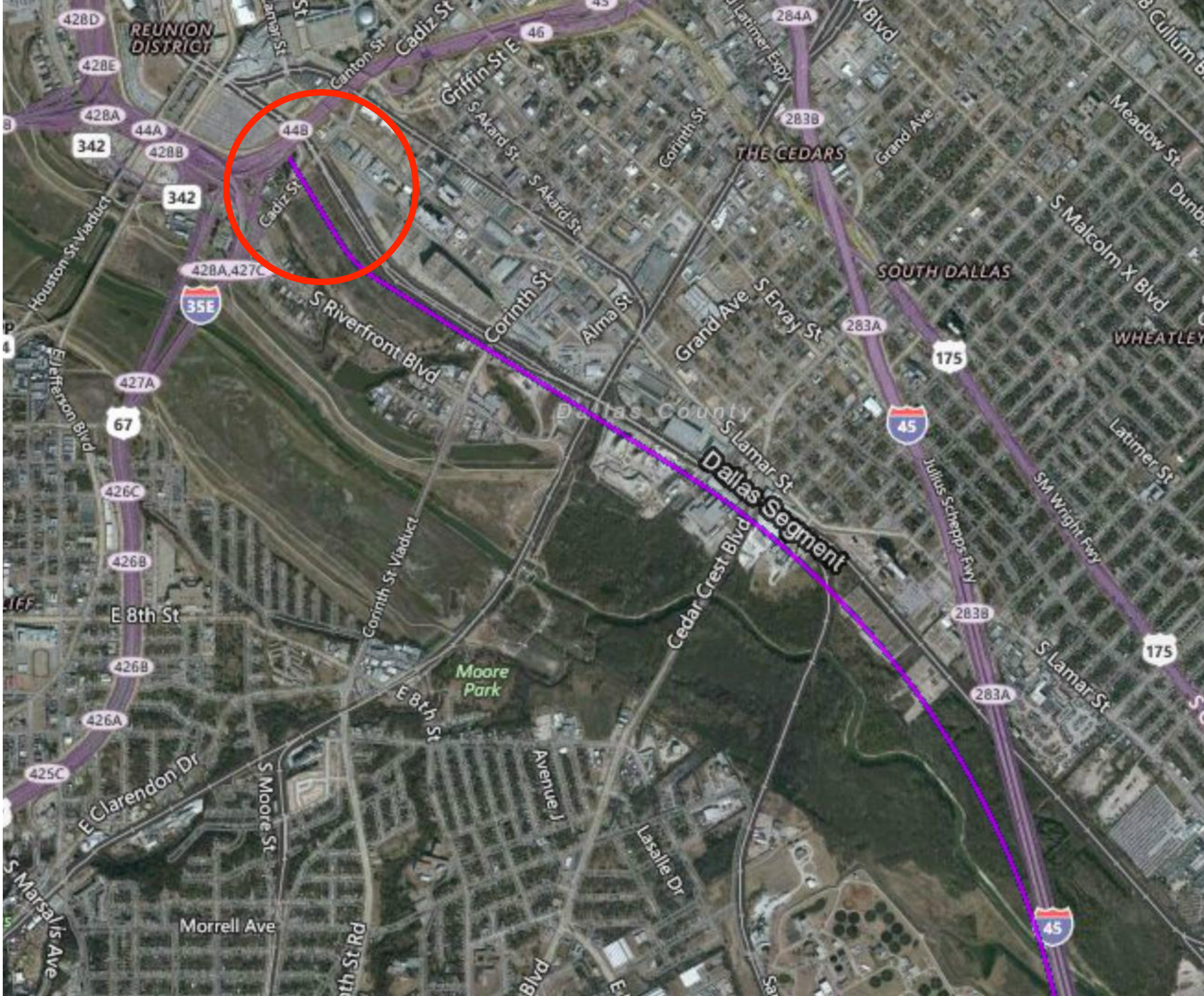
Map Key



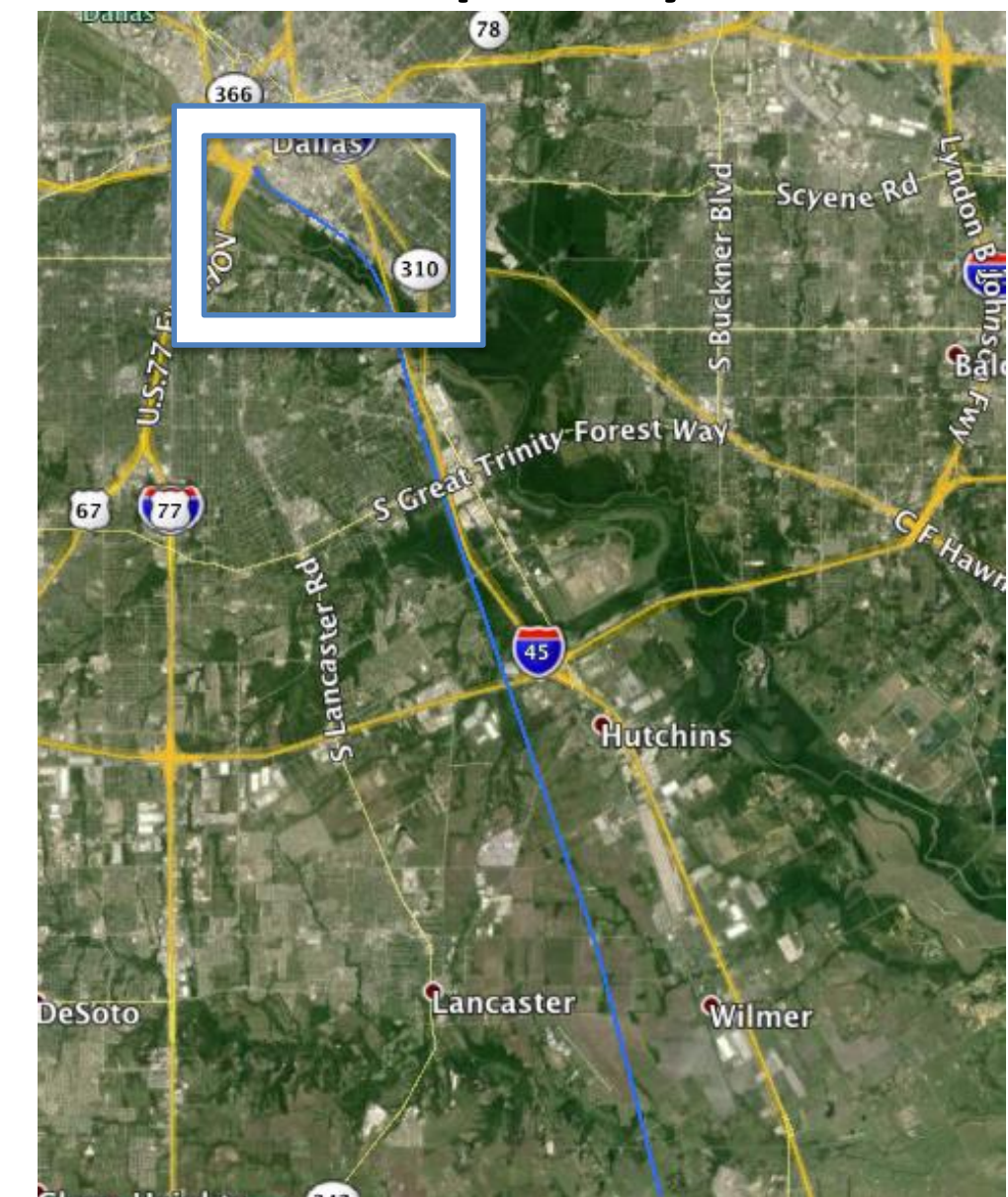


Map Key





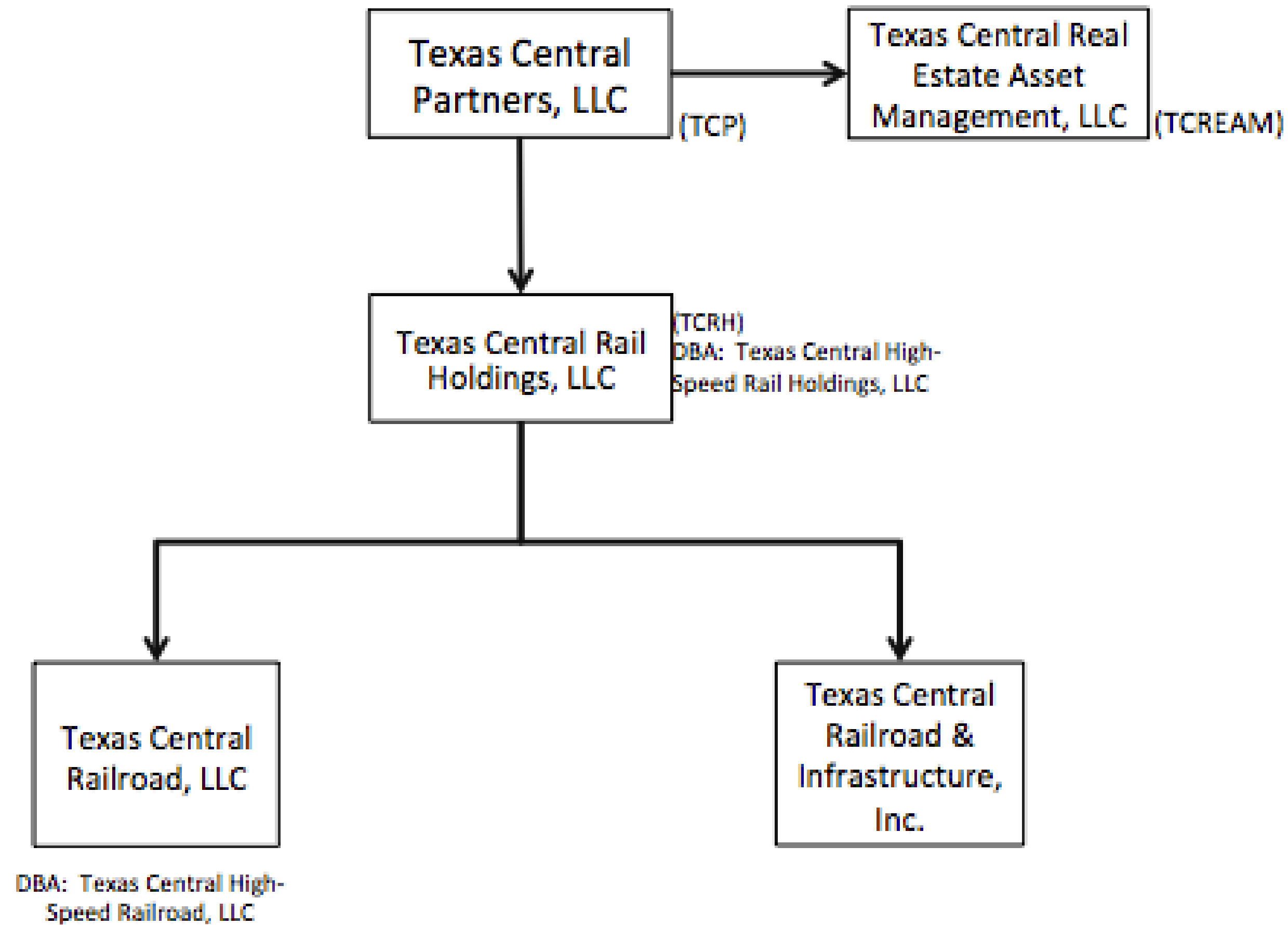
Map Key



Appendix B – Texas Central Information

Texas Central Corporate Entities & Contractor Relationships

Texas Central Company Structure



Texas Central Railway Team

