

# Smart Growth *for* Dallas

*Data-driven decisions for the future of Dallas'  
parks, open spaces, and green infrastructure*

Dallas Park and Recreation Board  
March 10, 2016



# Agenda

---

I. Welcome and Introductions

II. Program Overview

III. Live Demo: Decision Support Tool

*The Trust for Public Land Climate-Smart Cities:  
"Healthy, Connected Chattanooga"*

IV. Community Engagement

*buildingcommunityWORKSHOP:  
People Organizing Place (POP)*

V. Urban Heat Island

*The Texas Trees Foundation*

VI. How can this be used in Dallas?

VII. Questions and Discussion



# I. WELCOME & INTRODUCTIONS

# About The Trust for Public Land

---



The **Trust for Public Land** works across the country to create new parks and protect land for people, ensuring healthy, livable communities for generations to come.

Since our founding in 1972, we've created and protected more than 5,000 special places across the country. More than 7 million people live within a 10-minute walk of a place that we have created or protected. We have helped generate nearly \$60 billion in public funding for parks and natural areas through ballot measures supported by nearly 100 million voters in 37 states.

# About Our Partners

---



The **buildingcommunityWORKSHOP** is a Texas based nonprofit community design center seeking to improve the livability and viability of communities through the practice of thoughtful design and making. We enrich the lives of citizens by bringing design thinking to areas of our city where resources are most scarce.

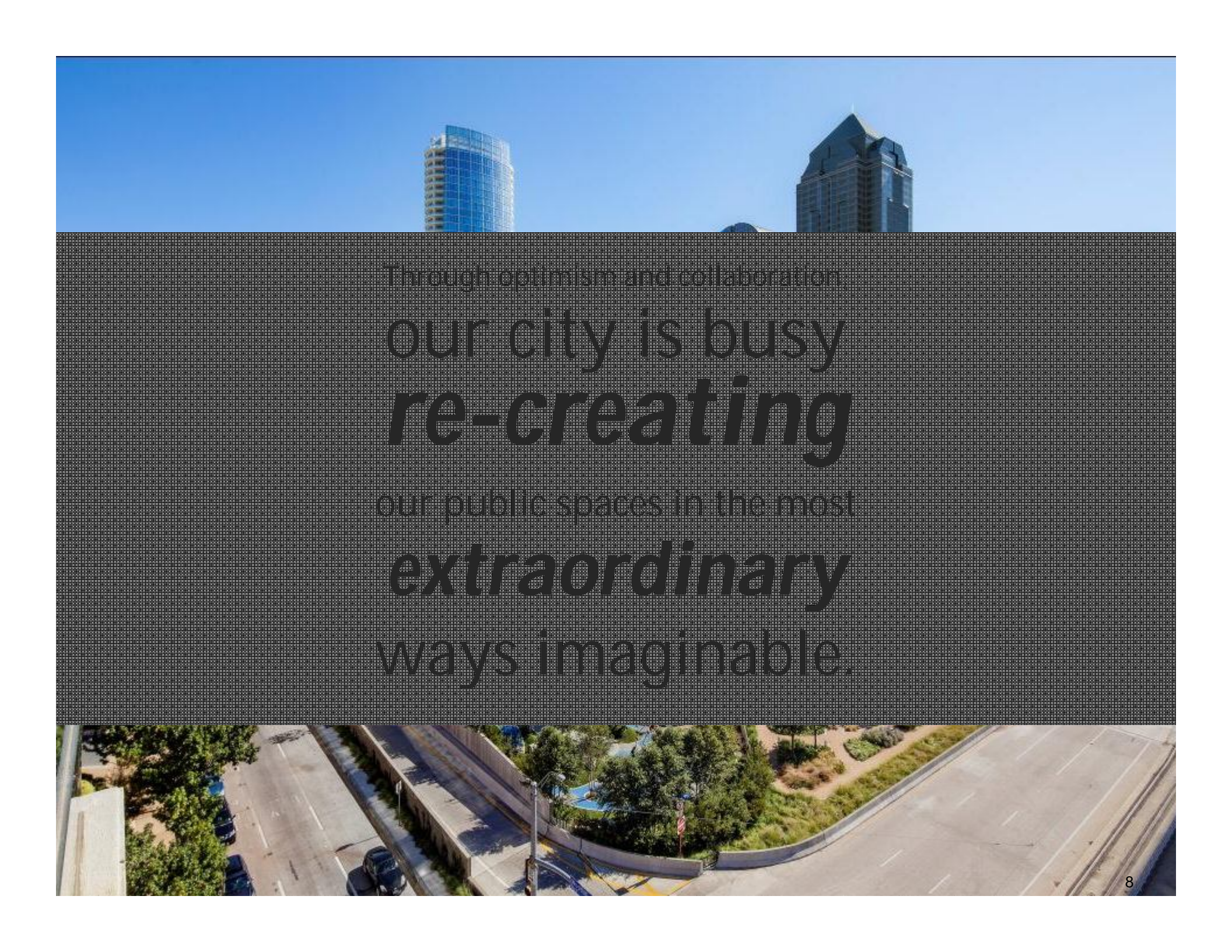


The Texas Trees Foundation preserves, beautifies, and expands parks and other public natural green spaces, public streets, boulevards, and rights-of-way by planting trees and encouraging others to do the same through educational programs that focus on the importance of building and protecting the “urban forest” today as a legacy for generations to come.

# II. PROGRAM OVERVIEW

*Smart Growth for Dallas*

WITH A GROWING  
POPULATION AND  
BOOMING ECONOMY,  
DALLAS STANDS ON  
THE CUSP OF A NEW  
ERA IN ITS HISTORY.



Through optimism and collaboration,  
our city is busy  
**re-creating**  
our public spaces in the most  
**extraordinary**  
ways imaginable.



BUT CHALLENGES STILL  
REMAIN...

# BUT CHALLENGES STILL REMAIN...

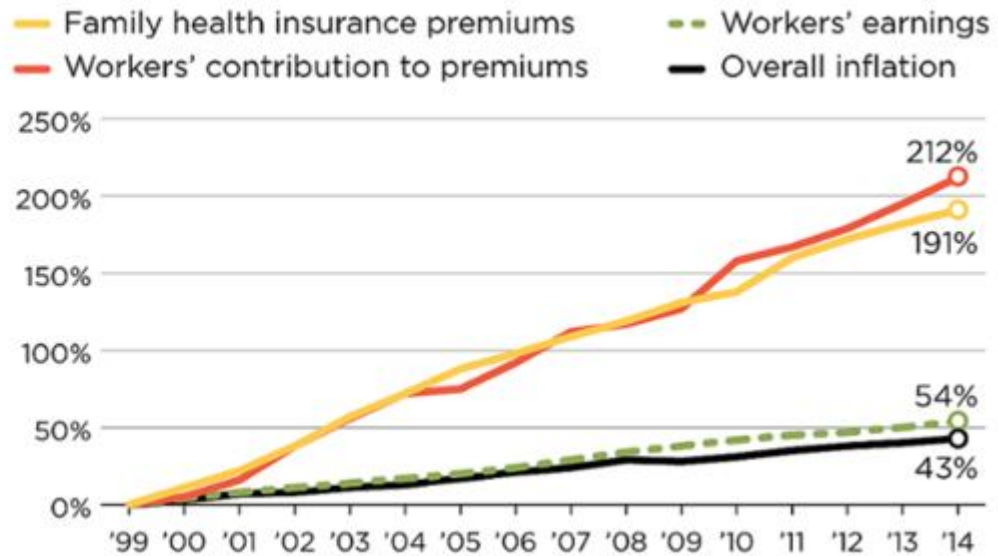
## The Dallas Morning News

### Texas workers' health insurance costs near highest in nation

#### Galloping U.S. health care costs

Cumulative increases in health insurance premiums, workers' contributions to premiums, inflation, and workers' earnings, 1999-2014

SOURCE: Kaiser/HRET Survey of Employer-Sponsored Health Benefits, 1999-2014; Bureau of Labor Statistics, Consumer Price Index, U.S. City Average of Annual Inflation (April to April), 1999-2014; Bureau of Labor Statistics, Seasonally Adjusted Data from the Current Employment Statistics Survey, 1999-2014 (April to April)



# **THE TEXAS TRIBUNE**

In DFW, Struggle to Save Water and Prepare for Growth



# The Dallas Morning News

## Dallas officials to get update on bike lanes, 'complete streets' efforts



2011 File Photo/David Woo

Lowest Greenville was the site of one of the most notable "complete streets" redos. The number of lanes has dropped, parking has been added, sidewalks widened and crosswalks enhanced.

# TexasMonthly

## Boom With A View

THE PERIL AND PROMISE OF BEING ONE OF THE FASTEST-GROWING CITIES IN TEXAS.

## The Dallas Morning News

## Poverty is eating at Dallas' core

DALLAS  
BUSINESS JOURNAL

## \$1B 'Plan for Growth' in South Dallas



## Portion of Loop 12 to be closed for a week after floods



Flooding in Dallas. Friday, May 29, 2015. (Photo: WFAA)

Dallas' green assets offer  
cost-effective and unique  
strategies for addressing  
the city's biggest  
**economic**  
**social**  
and **ecological**  
challenges of today

WITH DALLAS' GROWTH  
ONLY ACCELERATING,  
NOW IS THE TIME TO  
LAY THE FRAMEWORK  
FOR SMART, DATA-  
DRIVEN DECISIONS  
ABOUT OUR CITY'S  
FUTURE.



*Introducing:*

---

# Smart Growth *for* Dallas

*Data-driven decisions for the future of Dallas'  
parks, open spaces, and green infrastructure*



# Key Deliverables

---

Community  
Engagement

Identification of High-  
Priority Parcels

Interactive Decision  
Support Tool

Feasibility Study for  
Demonstration Project

# Building on local success...

In collaboration with bcWORKSHOP, Texas Trees Foundation, and others, we developed *Smart Growth for Dallas* to be the “next step” that continues the work already underway in Dallas.

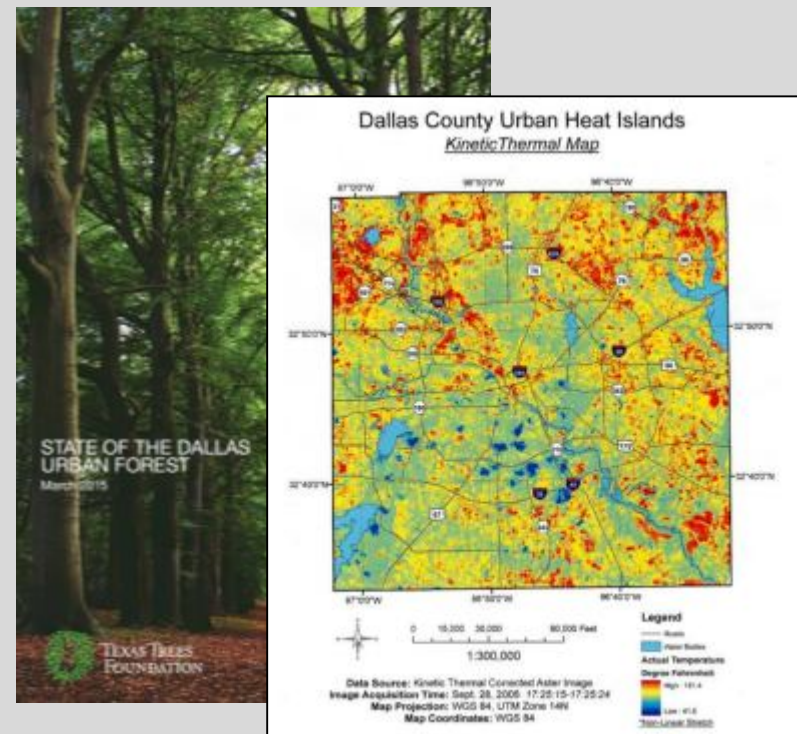
## bcWORKSHOP

### *Race and the Control of Public Parks*



## Texas Trees Foundation

### *State of the Dallas Urban Forest*



# ...using a proven framework.

*Smart Growth for Dallas* deploys The Trust for Public Land's innovative **Climate-Smart Cities** methodology in our local context. This program uses four strategies to help cities improve their climate resiliency:



We've successfully deployed this program in cities across the country, including:

- Chattanooga, TN
- Boston, MA
- Boston, MA
- New York, NY
- Los Angeles, CA
- Kirkland, WA

# Community Engagement

- **COMMUNITY MEETINGS**

*Series of large and small-format meetings across the city to frame objectives, gather non-GIS data, and share results of program.*

- **TECHNICAL ADVISORY COMMITTEE**

*Composed of representatives from the project partners, City of Dallas staff, and community stakeholders. Will provide expert input regarding planning objectives, data sources, and priorities.*

- **STORY WEBSITE**

*Interactive mapping website of Dallas' parks, open spaces, and green assets. Will share results of Smart Growth for Dallas in a variety of formats, including videos featuring Dallas residents and park users.*



# GIS-Based Analysis & Mapping



- IDENTIFY HIGH-PRIORITY PARCELS

- City-scale map identifying areas of high-opportunity, based on analysis of triple-bottom line objectives.
- List of specific high-priority parcels that meet criteria for acquisition or green infrastructure intervention.
- Economic valuation of parcels identified in report will be available for a select number of parcels

- DECISION SUPPORT TOOL

- Interactive web-based platform to provide customizable map-based analysis of land in Dallas, based on identified economic, social, and ecological objectives.
- Provides extensive data and priority modeling results at the parcel level
- Users may identify high-value parcels, analyze parcels against spatial data, and make individual parcel reports



# Demonstration Project Feasibility Study

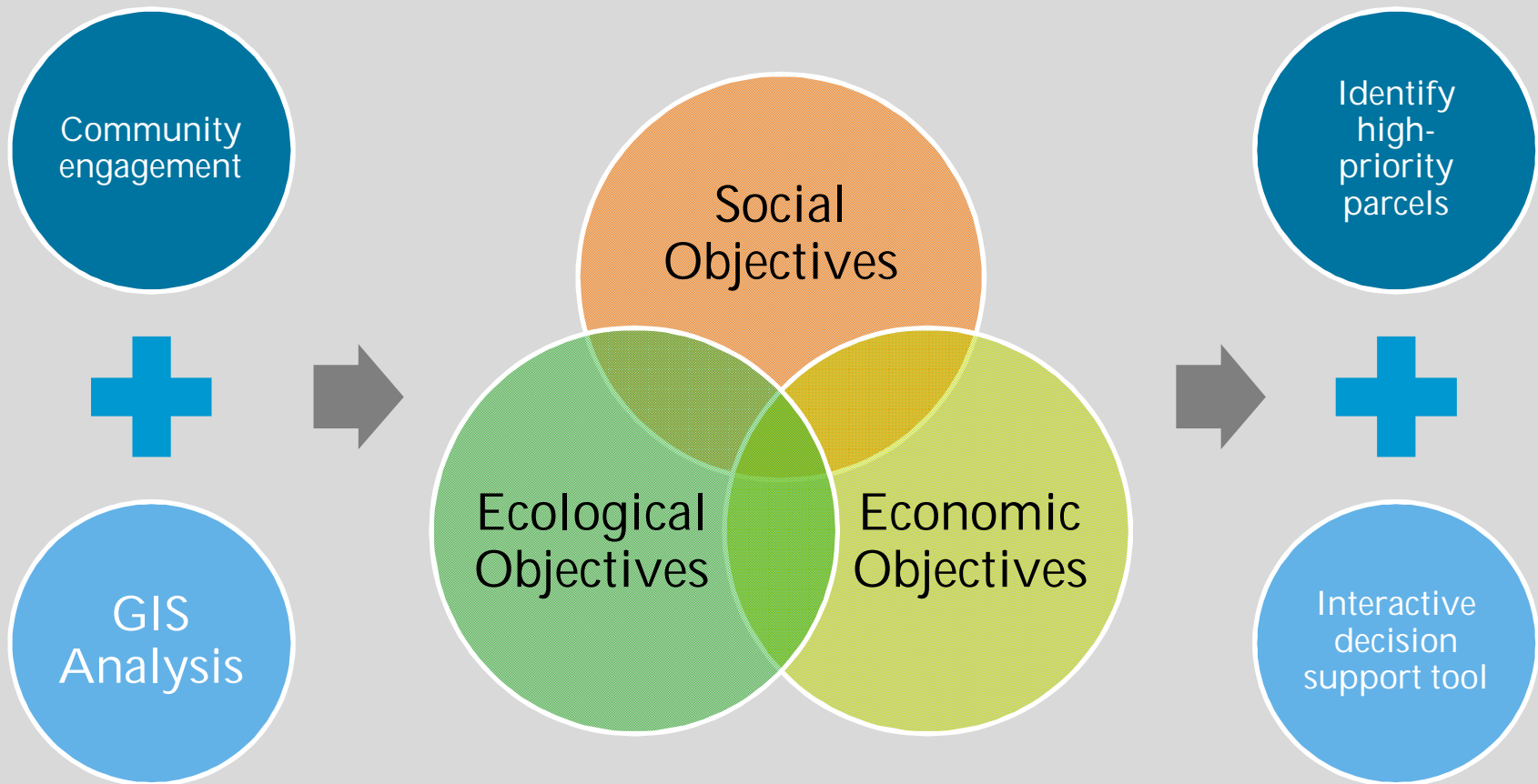
---

- **A PLAN TO MOVE FORWARD**  
*With the results of the GIS analysis in-hand, we'll contribute our expertise in project design and development, green infrastructure planning, real estate, and fundraising to help implement on-the-ground smart growth strategies.*



# Our “Triple Bottom Line” Strategy

Using **community engagement** and **GIS analysis** to optimize future green asset investments based on **economic, social, and ecological** objectives





# Ecological Objectives

---

- **ABSORB**  
*Identify high-priority areas where parks, open space, and green infrastructure have potential to absorb stormwater and improve water quality in our creeks, lakes, and the Trinity River*
- **COOL**  
*Work with The Texas Trees Foundation & Georgia Tech to identify priority areas where heat island has a disproportionate effect on vulnerable populations*
- **PROTECT**  
*Identify optimum locations for additions to green buffers along the Trinity River and its tributaries, improving flood protection and reducing flood risk*

# Social Objectives

---

- **ACTIVATE**  
*Analyze current strengths and gaps in park facility usage and activation, to identify targets for future investment of green assets.*
- **CONNECT**  
*Identify priority locations for deployment of green assets to improve connectivity between parks, trails, bike lanes, transit networks, residential, and employment centers.*
- **EDUCATE**  
*Identify education campuses with need for increased green space or park access.*

# Social Objectives *(continued)*

---

- EQUITY

*Identify opportunities for green asset investments to reduce barriers between social groups, improve park access for vulnerable and underserved populations, and make Dallas' parks and open space more equitable.*

- HEALTH

*Identify highest priority neighborhoods for increased access to active recreation features for city residents, supporting more active and healthy lifestyles.*

# Economic Objectives

---

- RECREATION VALUE

*Use a survey of residents and GIS analysis to quantify the economic value of recreation benefits that may be provided by creating a park on a specific parcel of land.*

- HEALTH VALUE

*Calculate the economic value of medical care cost savings that may be realized by Dallas residents through their likely usage of a new park.*

- PROPERTY VALUE

*Calculate the added market value that the creation of a park could bring to existing nearby residential properties.*

# III. LIVE DEMO

*“Healthy Connected Chattanooga”  
Decision Support Tool*

# IV. COMMUNITY ENGAGEMENT

*buildingcommunityWORKSHOP*

# Community Engagement

---

- Citywide Community Engagement
  - Informing the broader community of project process, objectives, schedule, & opportunities for participation
  - Collect information to inform the filtering of prioritized new park and park redevelopment opportunities in Phase 1
- Seven meetings
  - Spread across the city, guidance from partners and DPARD on locations
- Report on findings
  - Identification of new GIS data needed for Phase 2, guidance for the Technical Advisory Committee



# Community Engagement

---

- Local Community Engagement:
  - Focused to gather information not captured in GIS analysis or not yet considered for GIS analysis
  - Gather stories about the relationship between parks and neighborhoods
- 20 meetings
  - Spread across the city with a variety of audiences: neighborhood groups, friends of parks groups, park users, Parks Department staff, service providers
- Report on findings
  - Identification of new GIS data needed for Phase 2, guidance for the Technical Advisory Committee





# Citywide Public Presentation

---

- Share the findings of the program
- Seven meetings
  - Spread across the city in similar locations to the launch of the program
- Public website
  - Share the process and results in an accessible manner
  - Inform on how the program results are implemented



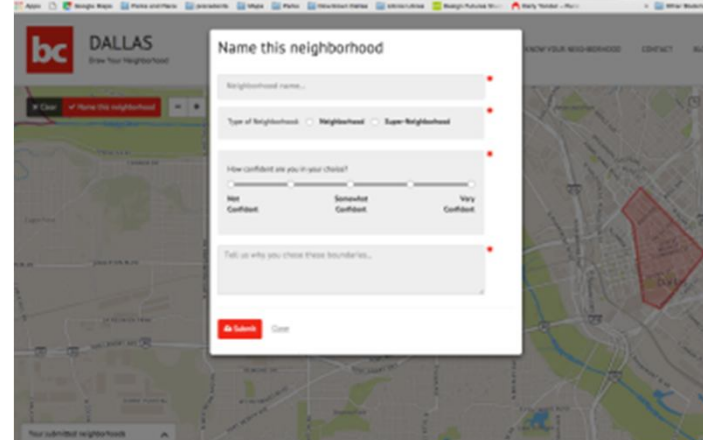
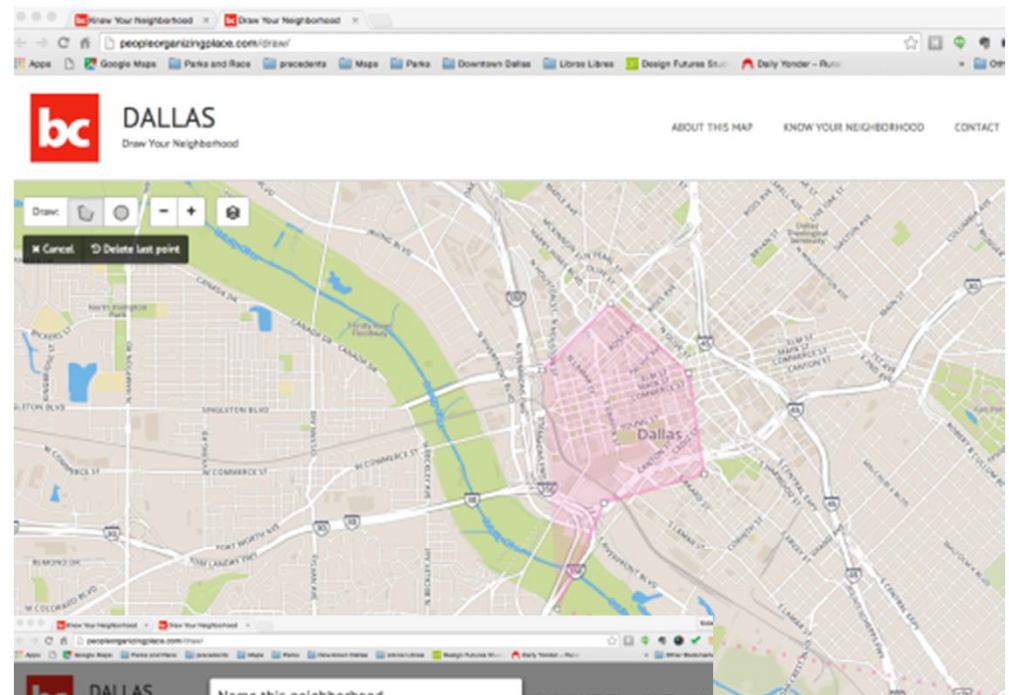
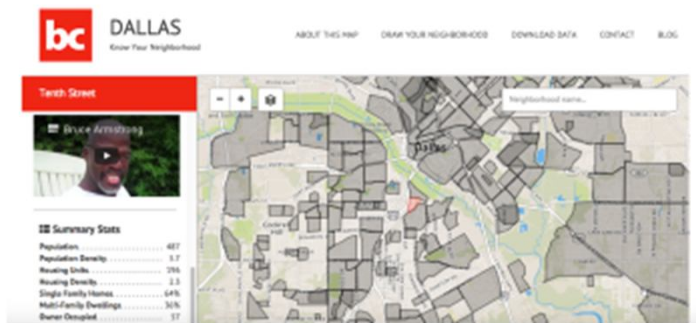
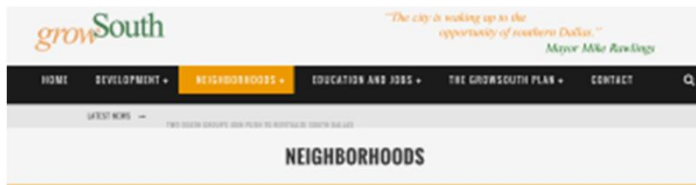
# Storytelling

---

- Short Film on the program and process
  - Reporting our and sharing stories
- Neighborhood Stories
  - Share stories about the connections between parks and neighborhoods, either importance
- People Organizing Place website of Dallas Parks
  - Share park features, stories, Friends Groups, etc.
  - Mapping new or desired park features



# Storytelling – peopleorganizingplace.org



# V. URBAN HEAT ISLAND

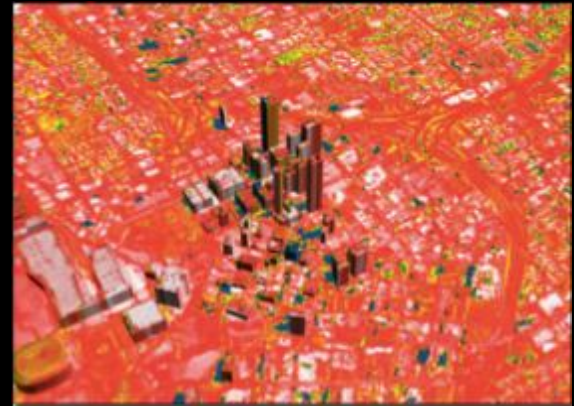
*The Texas Trees Foundation*



## Green is the New Black: Managing Rising Heat Trends in Dallas

Matt Grubisich  
Texas Trees Foundation  
[www.texastress.org](http://www.texastress.org)

anomaly



risk



response



# Drivers of the urban heat island

1. Loss of natural vegetation



2. Replacement of vegetation with impervious materials

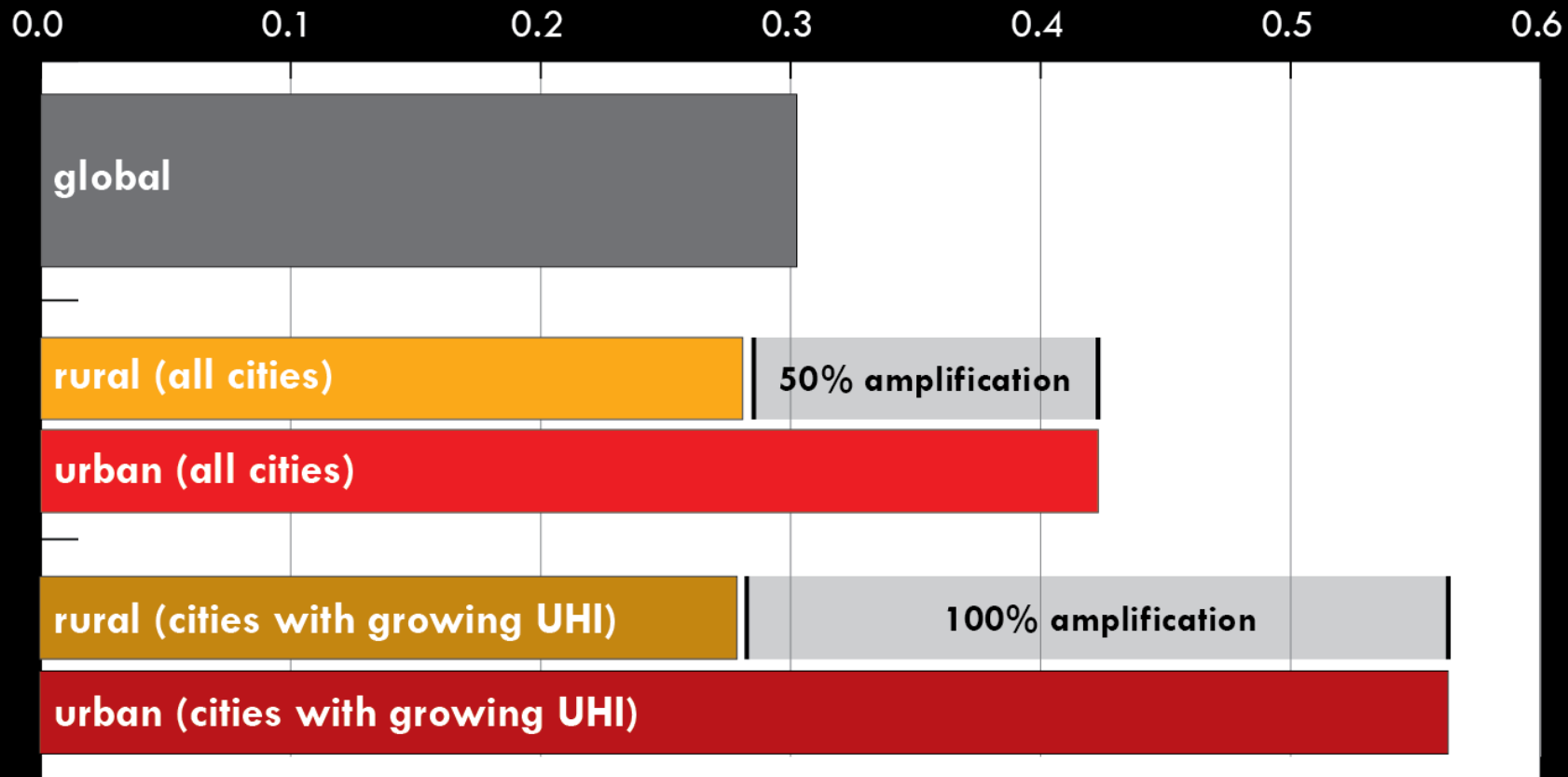


3. Waste heat from vehicles, industry, building air conditioning



4. Trapping of heat by building "canyons"



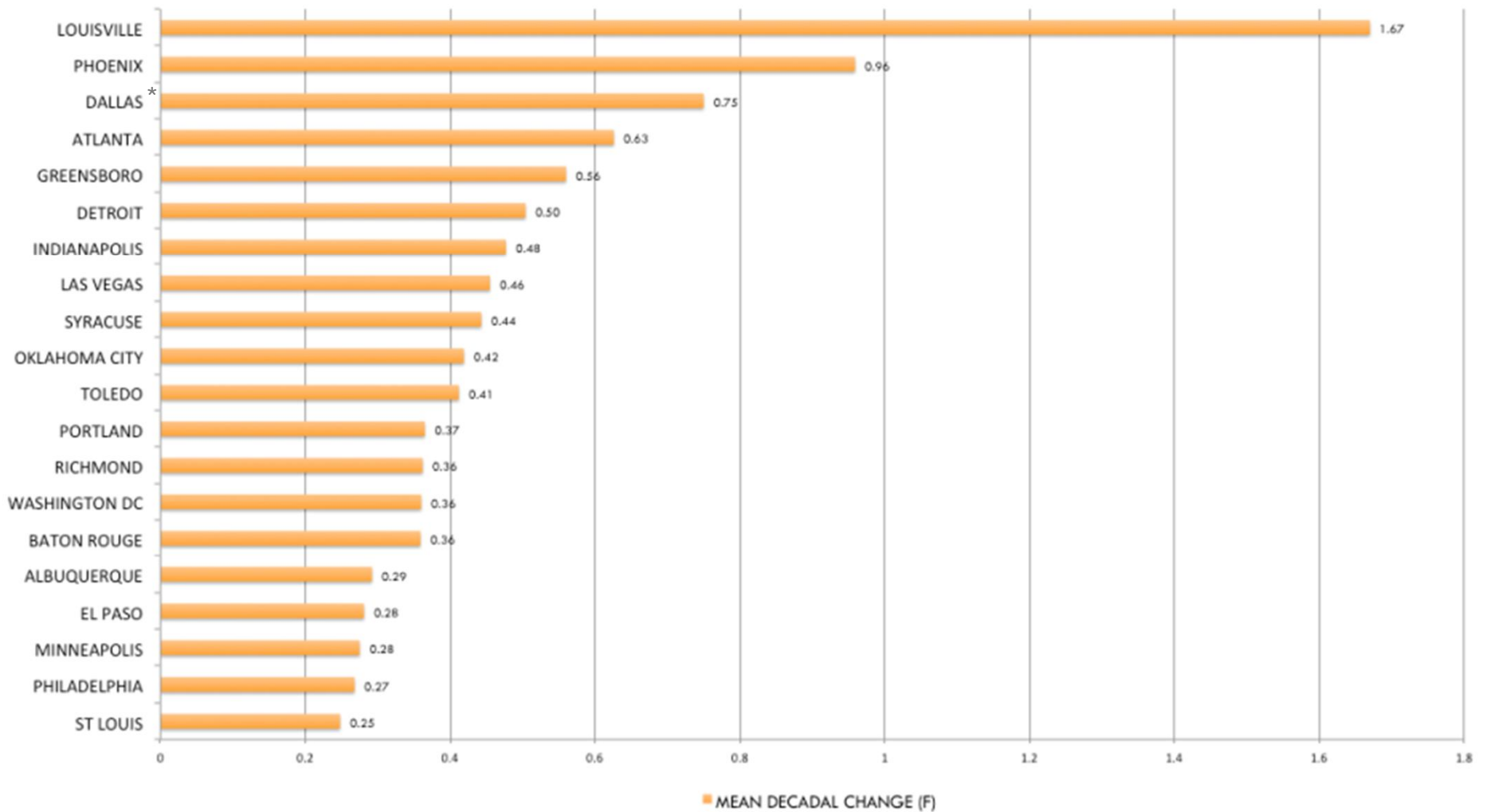


global vs. urban rates of warming (°F/decade): 1961-2010



# Urban warming rankings

TOP 20 MOST RAPIDLY GROWING URBAN HEAT ISLANDS IN UNITED STATES: 1961 - 2010



SOURCE: URBAN CLIMATE LAB, GEORGIA INSTITUTE OF TECHNOLOGY

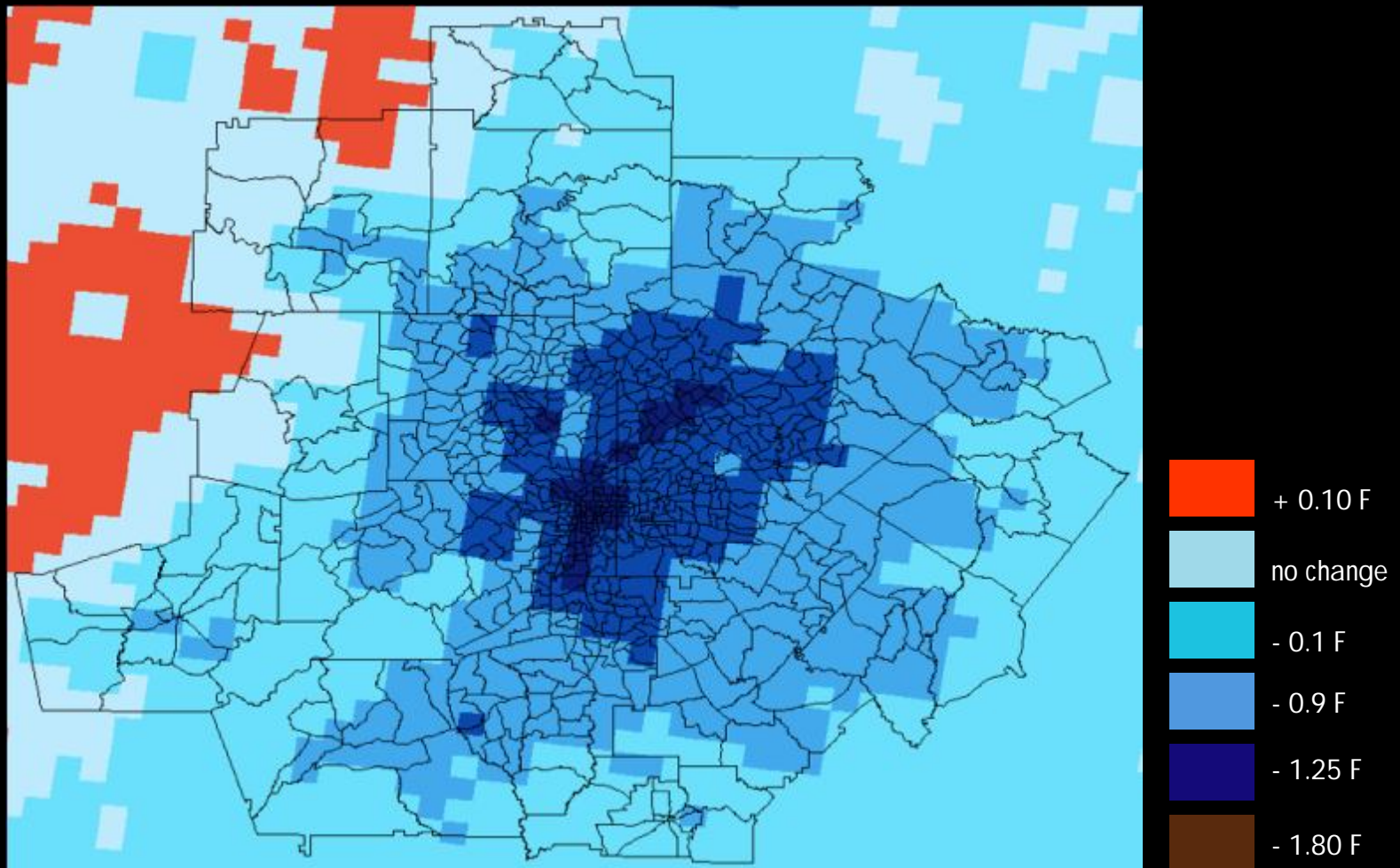
warming in excess of rural trend (°F/decade)

# Climate-responsive design

Jason Vargo



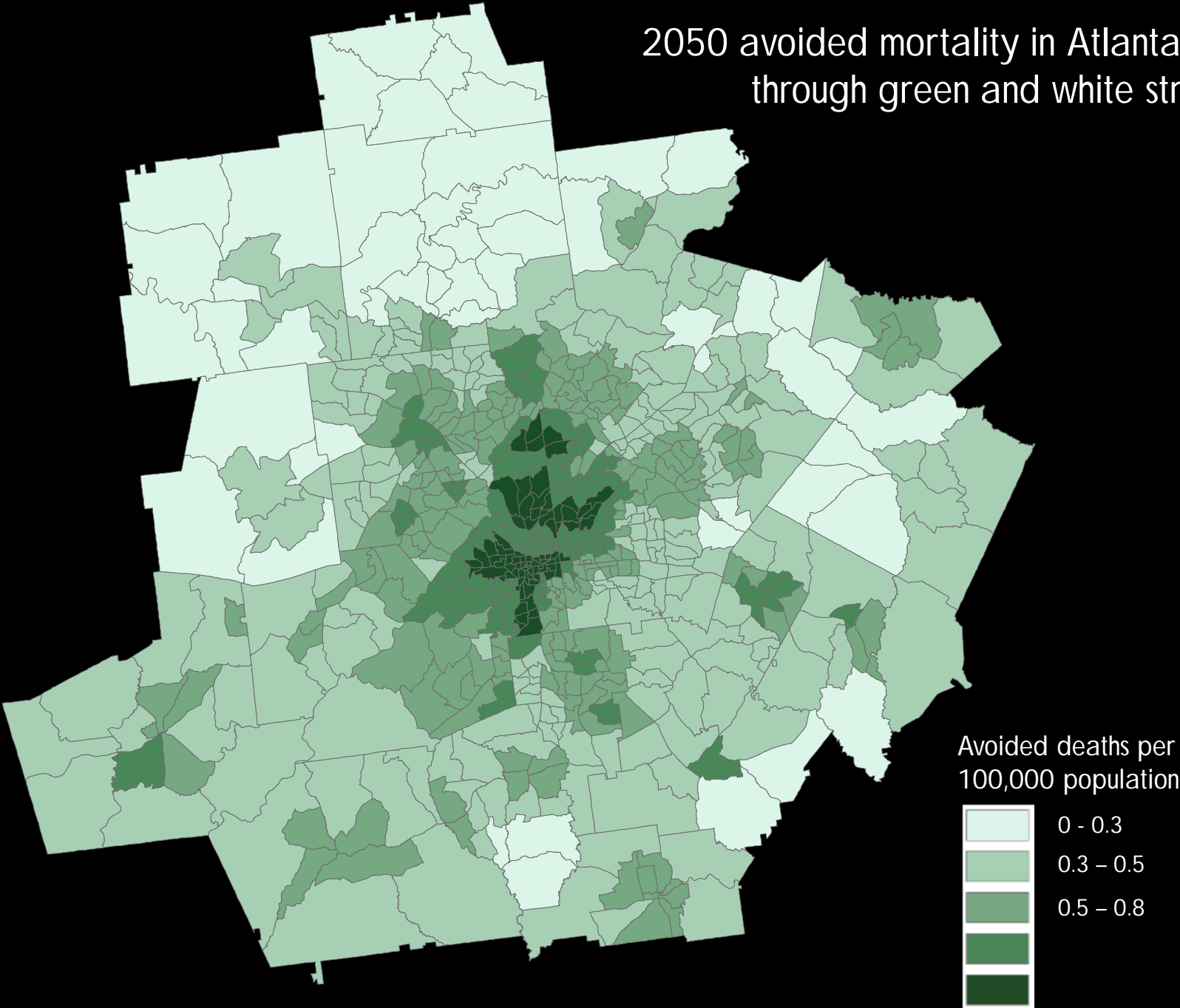
## Temperature change from trees and green roofs



# New green spaces & green roofs



# 2050 avoided mortality in Atlanta Region through green and white strategies



# VI. HOW CAN DALLAS USE THIS?

# Use Case: Site Selection

**Climate Smart Cities: Healthy Connected Chattanooga**

THE TRUST for PUBLIC LAND  
CONSERVING LAND FOR PEOPLE

Map Background: Street Map | Terrain Map | Aerial Imagery

Analysis Data: [Data Sources](#)

- Cool
- Connect
- Absorb and Protect
- Equitable Access and Health
- Green Infrastructure Assets and Opportunities
- Reference Layers

Data Transparency: [Slider]

Analysis Results: [Data & Methodology](#)

- Turn off Analysis Results
- Overall Stacked Priorities
- Stacked Priorities
- Cool
- Connect
- Absorb and Protect
- Equitable Access and Health

Results Transparency: [Slider]

Parcel Details:

Parcel ID: 156B L 024  
Acres: 1.4  
Owner: CHATT CITY OF  
Address: LYNNBROOK AVE  
Vacant: Yes

**Overall: Stacked Priorities**  
Parcel has priority acres: Yes  
Priority acres: 1.4  
% of parcel: 100%

**Goal: Cool**  
Parcel has priority acres: Yes  
Priority acres: 1.4

Parcel Details:

Parcel ID: 156G B 014.01  
Acres: 1.4  
Owner: CHATT CITY OF &  
Address: S WILLOW ST  
Vacant: Yes

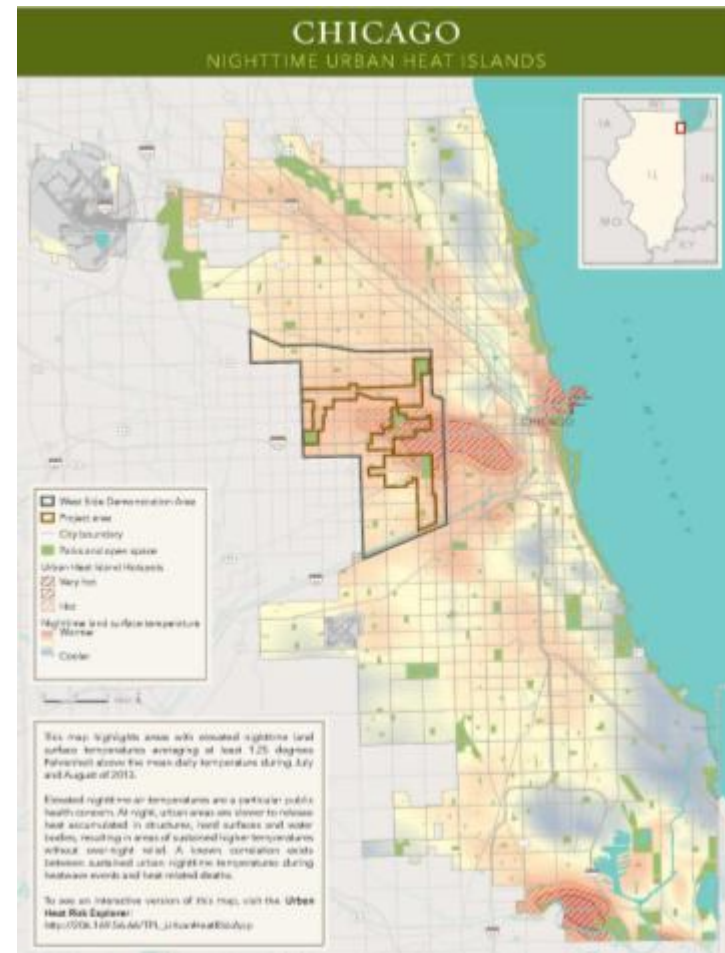
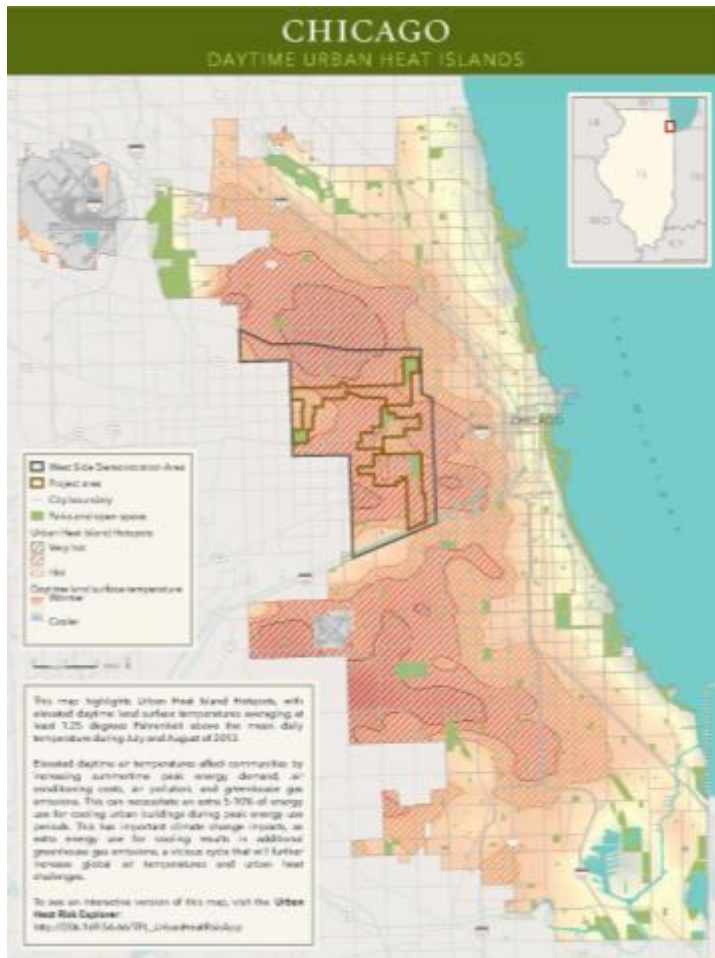
**Overall: Stacked Priorities**  
Parcel has priority acres: Yes  
Priority acres: 1.4  
% of parcel: 100%

**Goal: Cool**  
Parcel has priority acres: Yes  
Priority acres: 1.4

HELP | Copyright © 2015 The Trust for Public Land | Questions About This Site | Benwood Foundation

POWERED BY esri

# Use Case: Making the Case - Chicago

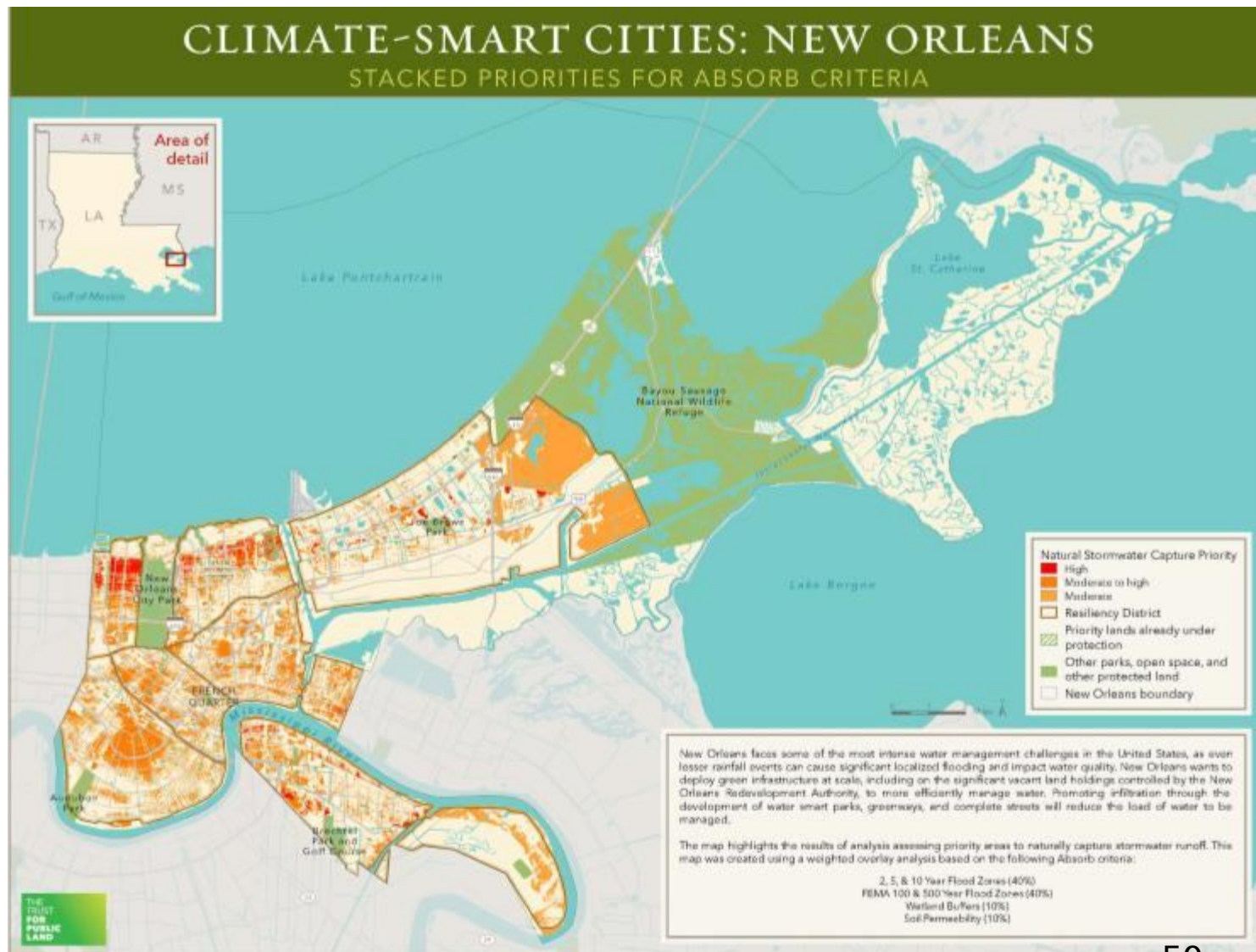




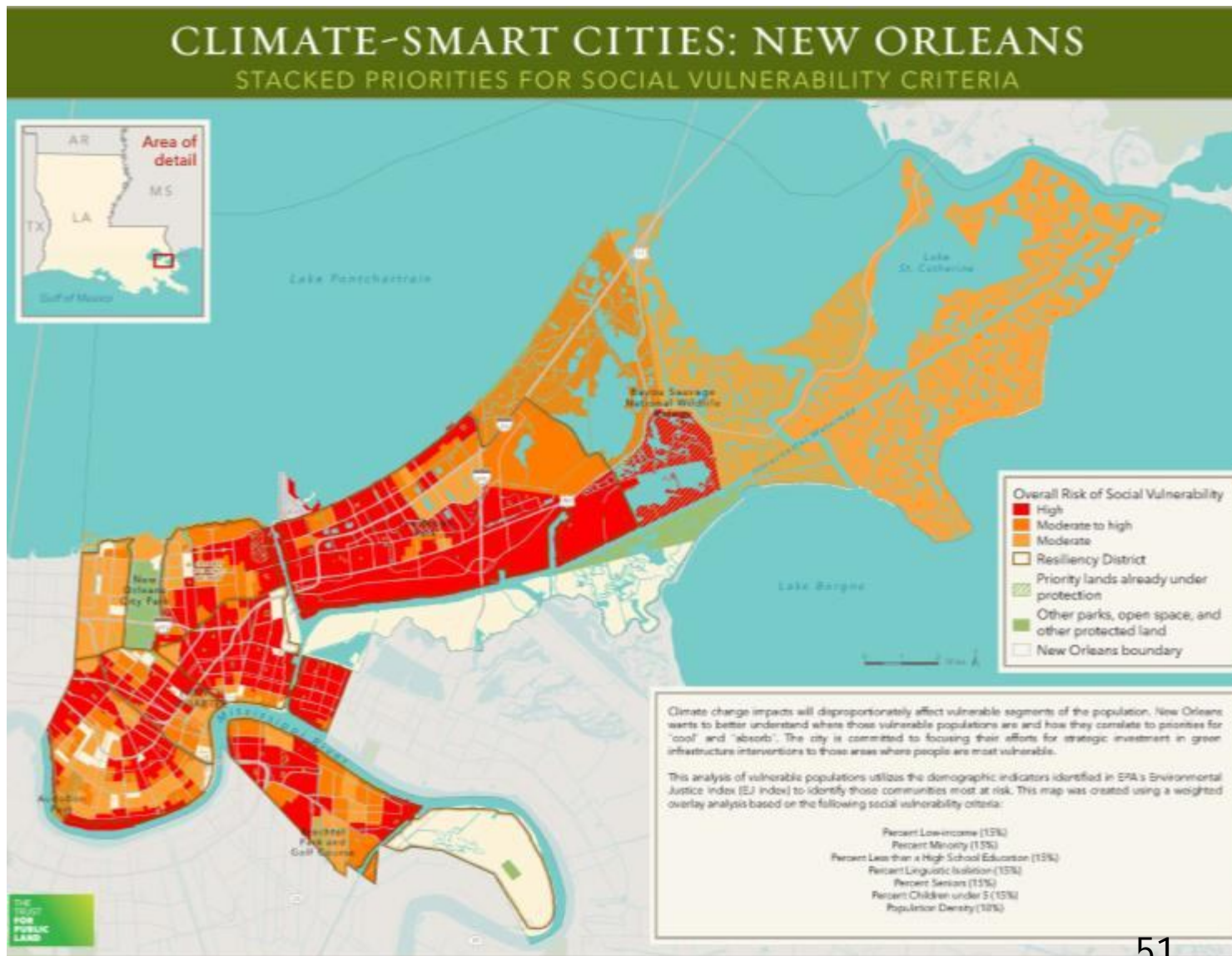
# Use Case: Making the Case – New Orleans



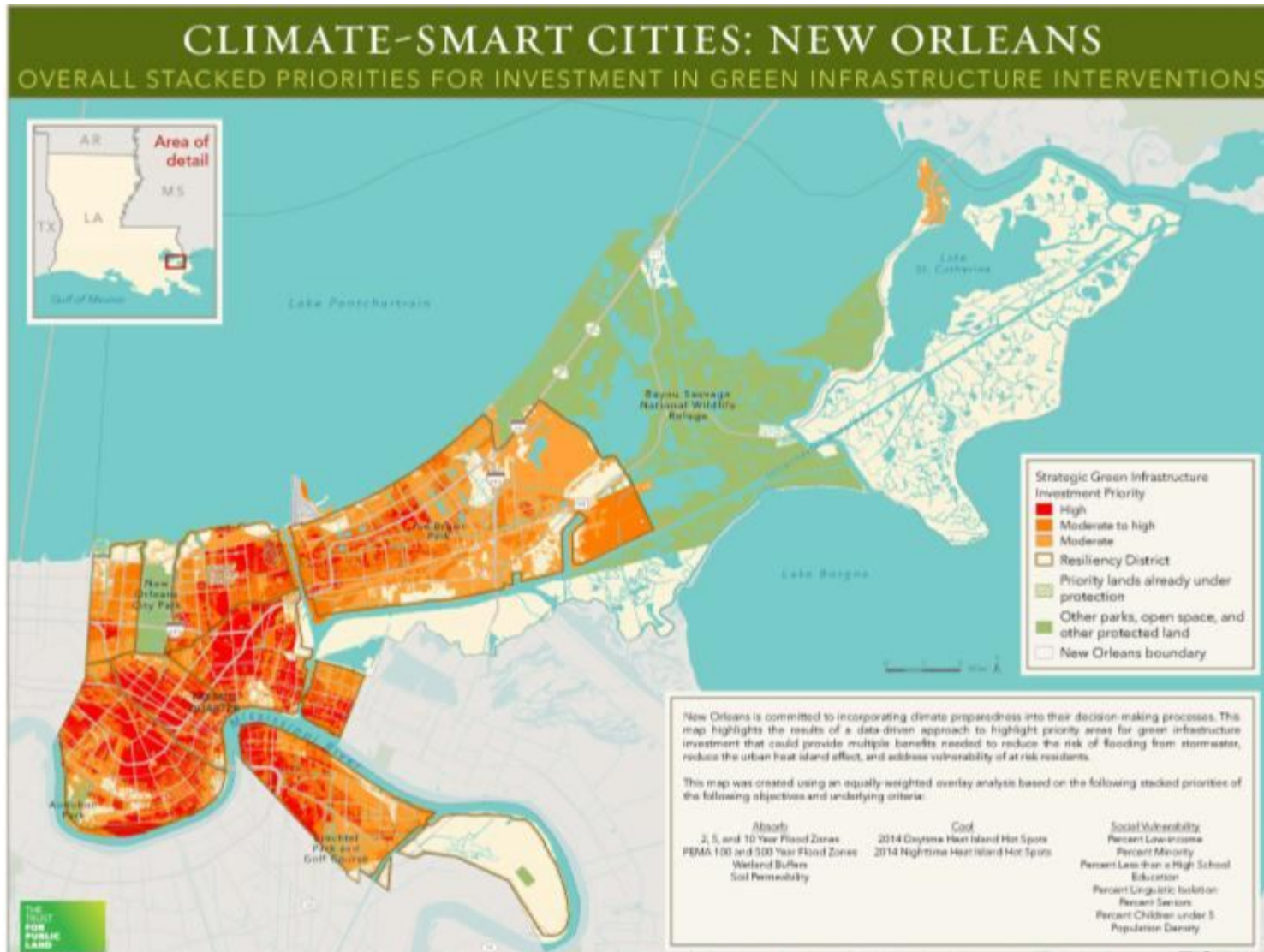
# Use Case: Making the Case – New Orleans



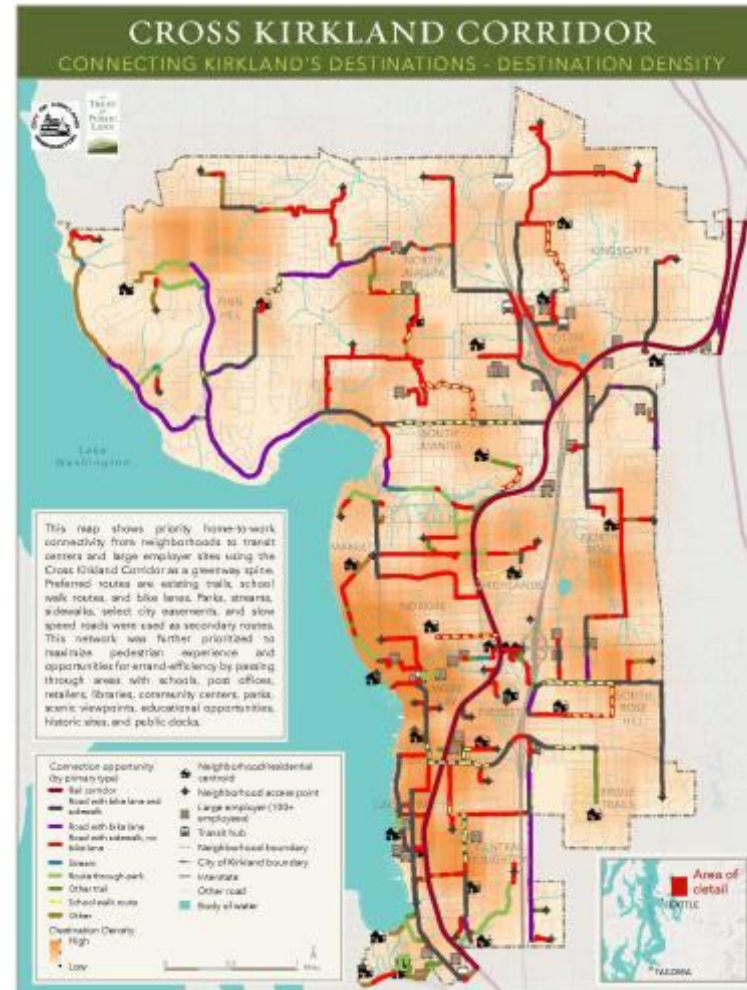
# Use Case: Making the Case – New Orleans



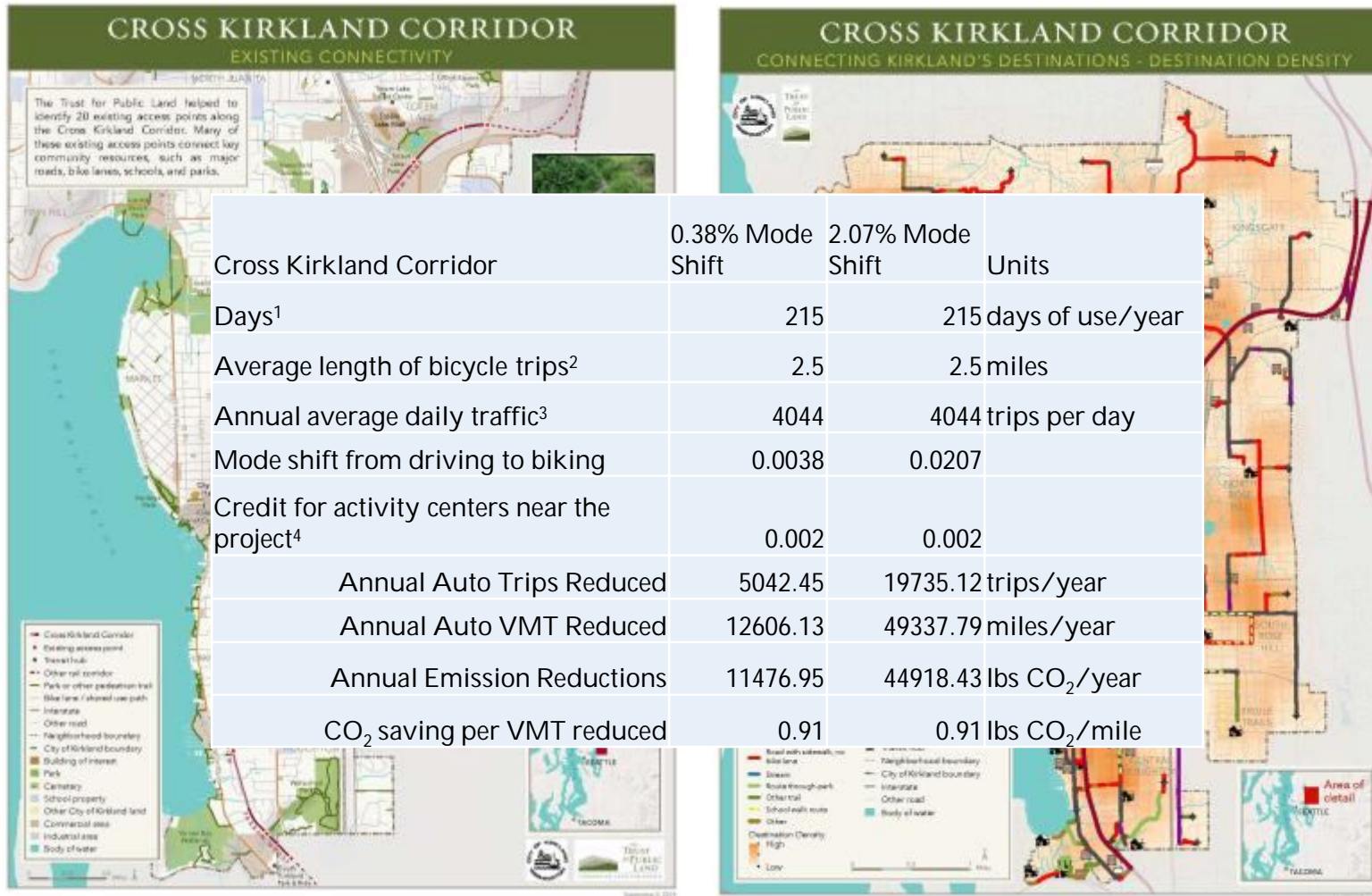
# Use Case: Making the Case – New Orleans



# Closer Look: Cross Kirkland Corridor Analysis



# Closer Look: Cross Kirkland Corridor Analysis



# VII. QUESTIONS & DISCUSSION

# Contact Us

---



## **Robert Kent**

*The Trust for Public Land  
North Texas Area Director*

e: [robert.kent@tpl.org](mailto:robert.kent@tpl.org) | t: 469-615-5448



## **Isaac Cohen**

*buildingcommunityWORKSHOP*

e: [isaac@bcworkshop.org](mailto:isaac@bcworkshop.org) | t: 214-252-2900



## **Matt Grubisich**

*The Texas Trees Foundation  
Operations Director & Urban Forester*

e: [matt@texastrees.org](mailto:matt@texastrees.org) | t: 214-953-1184