



# **ELM FORK GREENBELT MASTER PLAN**

**Park & Recreation Board  
June 4, 2015**

# OVERVIEW

2

- 🏰 Master Plan funded through donation by *The Boone Family Foundation* to the Trinity Trust Foundation
- 🏰 Plan prepared by Freese and Nichols, Inc.
- 🏰 3 stakeholder meetings
- 🏰 Master Plan provides guidance for future development

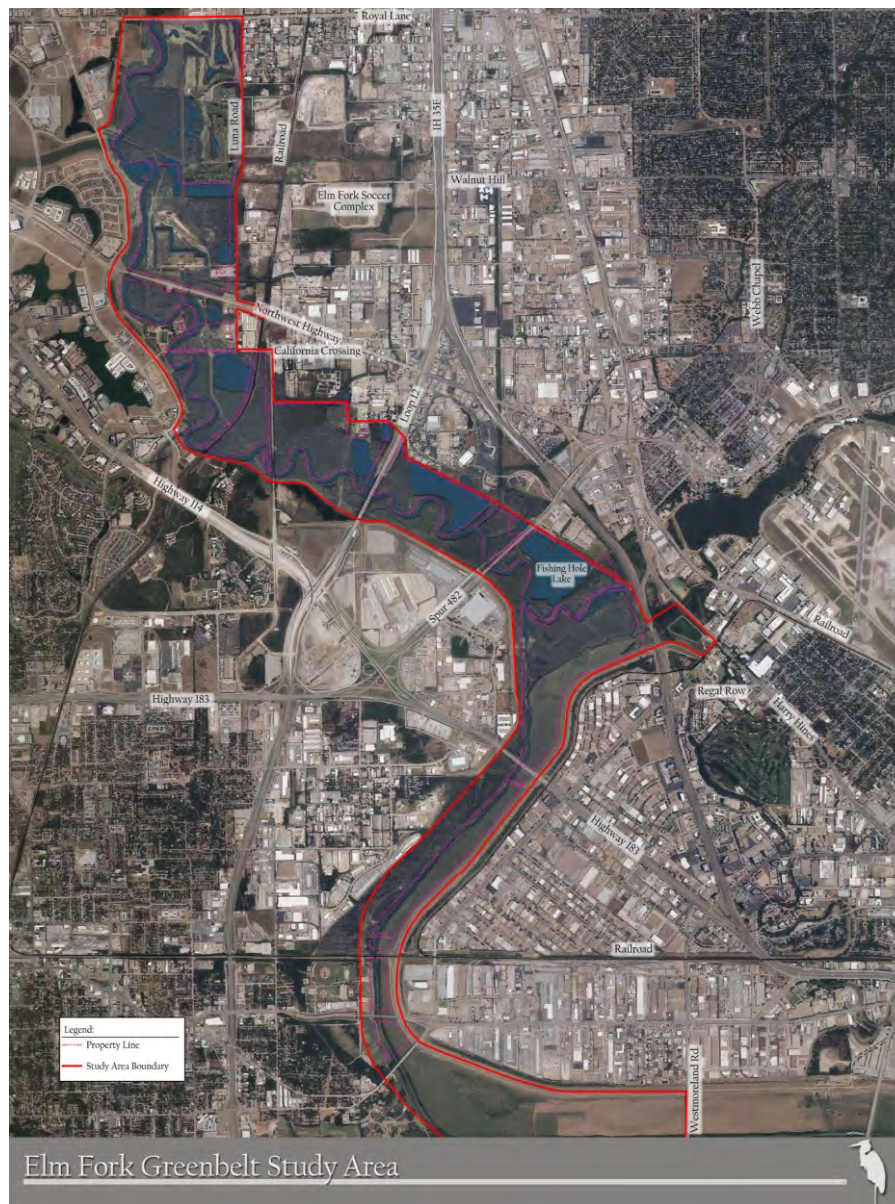


# TRAIL NETWORK MASTER PLAN UPDATE

3

## Study Area:

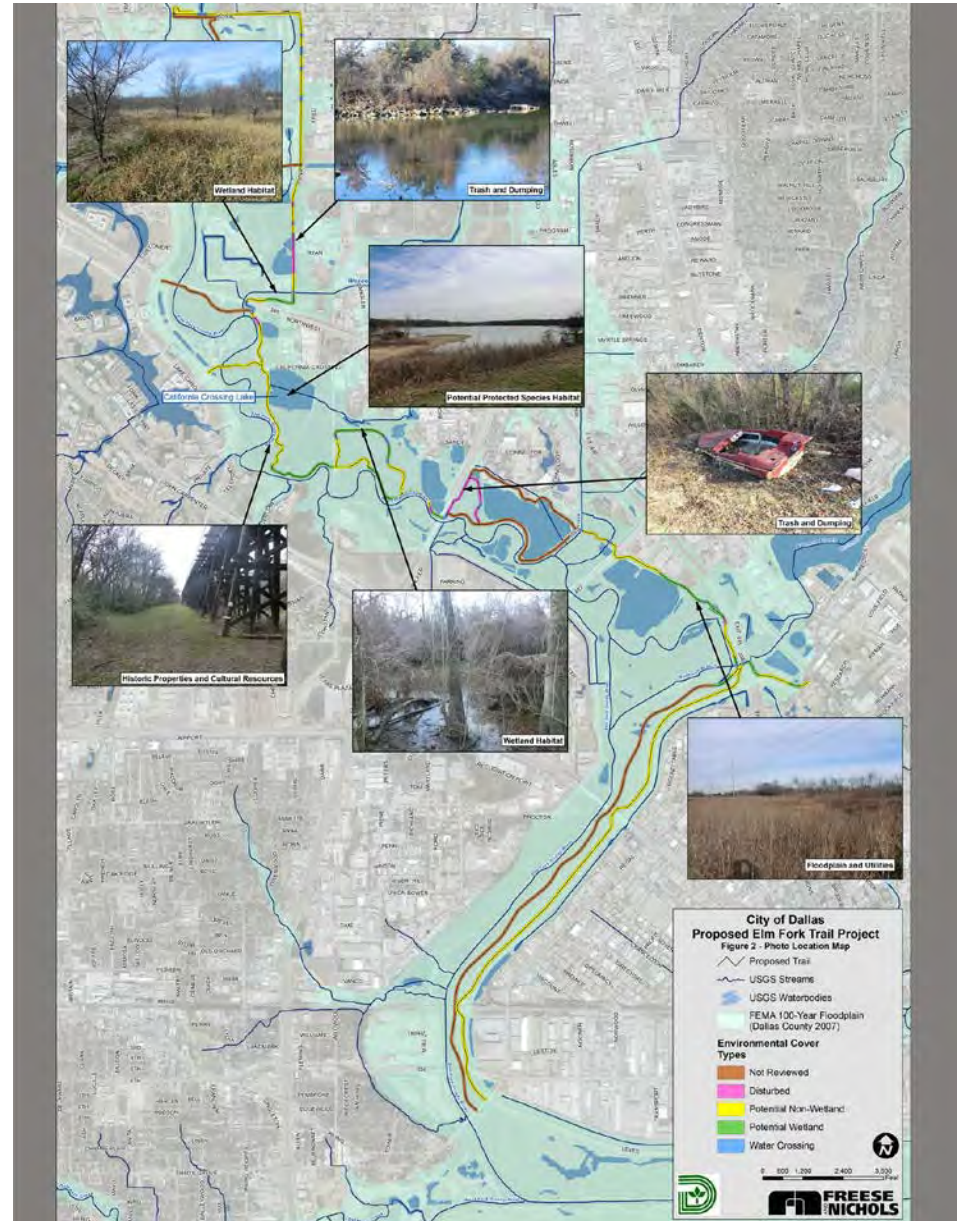
- Over 10 mile long corridor
- Over 4,000 feet wide at its widest point, 500 feet wide at its narrowest



# TRAIL NETWORK MASTER PLAN UPDATE

4

## Existing Conditions





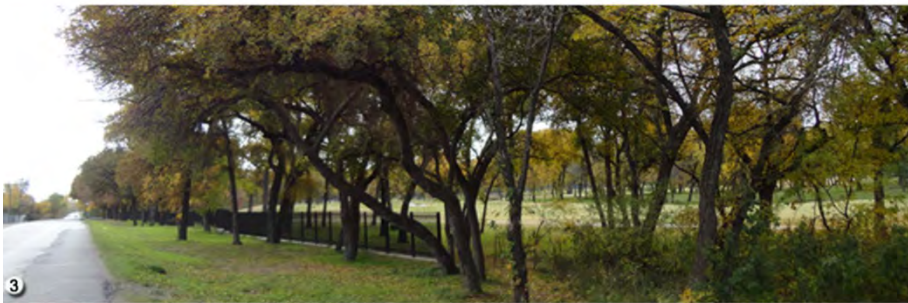
# TRAIL NETWORK MASTER PLAN UPDATE

5

## Existing Conditions: North



*Explore . Dream . Discover*  
*Look deep into nature, and then you will understand everything better.*  
*-Albert Einstein*



# TRAIL NETWORK MASTER PLAN UPDATE

6

## Existing Conditions: California Crossing Area



Explore . Dream . Discover  
*Man cannot discover new oceans unless he has the courage to lose sight of the shore.*  
- Andre Gide

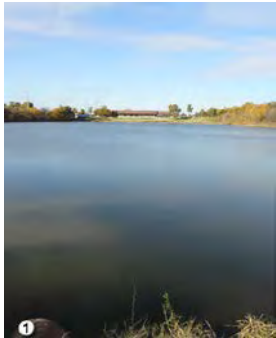




# TRAIL NETWORK MASTER PLAN UPDATE

7

## Existing Conditions: Wildwood Drive Area



Explore . Dream . Discover  
*The first and simplest emotion which we discover in the human mind, is curiosity.*  
- Edmund Burke



# TRAIL NETWORK MASTER PLAN UPDATE

## Existing Conditions: Fishing Hole Lake Area



Explore . Dream . Discover  
*Discovery consists not in seeking new lands but in seeing with new eyes.*  
- Marcel Proust





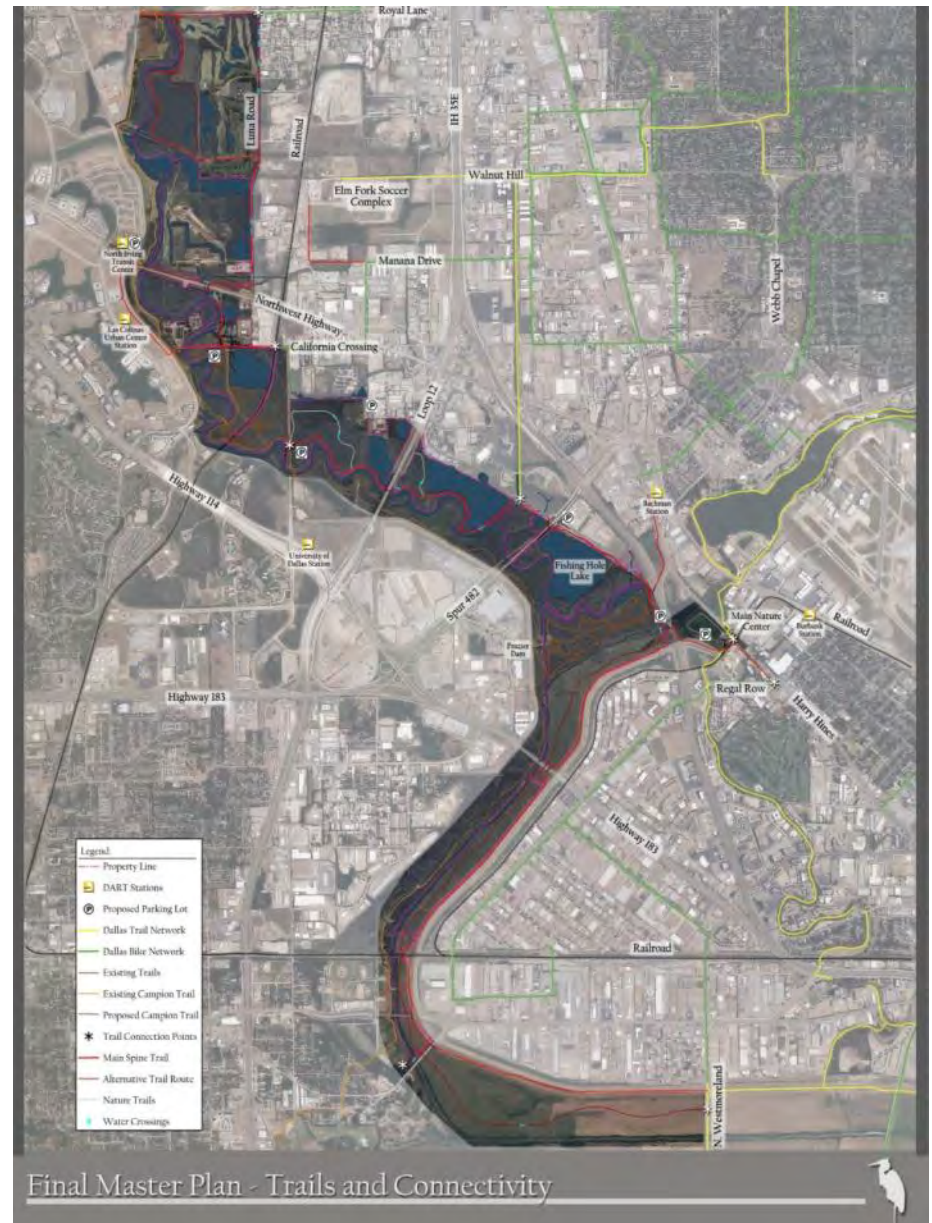
# TRAIL NETWORK MASTER PLAN UPDATE

9

## Trails and Connectivity

### Trails

- Spine Trail: 14.8 miles
- Soft surface trails
  - Existing DORBA Trails: 6.6 miles
  - Existing nature trails: 3.5 miles
  - Proposed nature trails: 1.7 miles
- Access to 3 DART stations
  - Bachmann
  - Los Colinas Urban Center
  - North Irving Transit Center

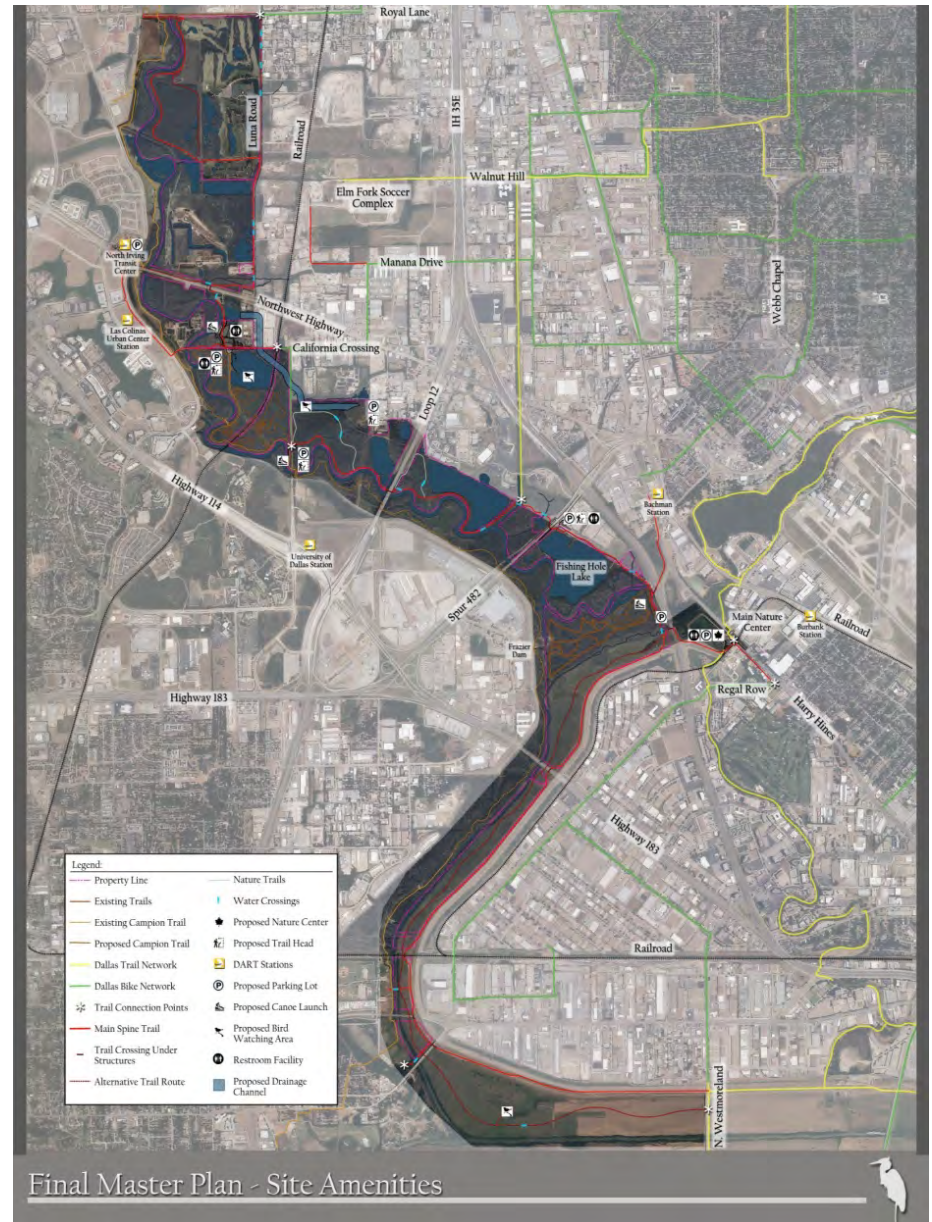


# TRAIL NETWORK MASTER PLAN UPDATE

10

## Site Amenities

- Nature Center
- Canoe/Boat Launch
- Bird Watching Blind and Tower
- Restrooms
- Trailheads/ Interpretive Stations
- Pavilion
- Parking





# TRAIL NETWORK MASTER PLAN UPDATE

## Project Area Concepts: California Crossing



Project Area Plan - California Crossing

# TRAIL NETWORK MASTER PLAN UPDATE

12

## Project Area Concepts: California Crossing

- Parking
- Pavilion
- Restroom
- Trailhead/Interpretive Station
- Canoe
- Nature Trail
- Bird Blind
- District 5 Maintenance Service Center  
(Army Reserve facility)





# TRAIL NETWORK MASTER PLAN UPDATE

## Project Area Concepts: Wildwood Drive



Project Area Plan - Wildwood Drive

# TRAIL NETWORK MASTER PLAN UPDATE

14

## Project Area Concepts: Wildwood Drive

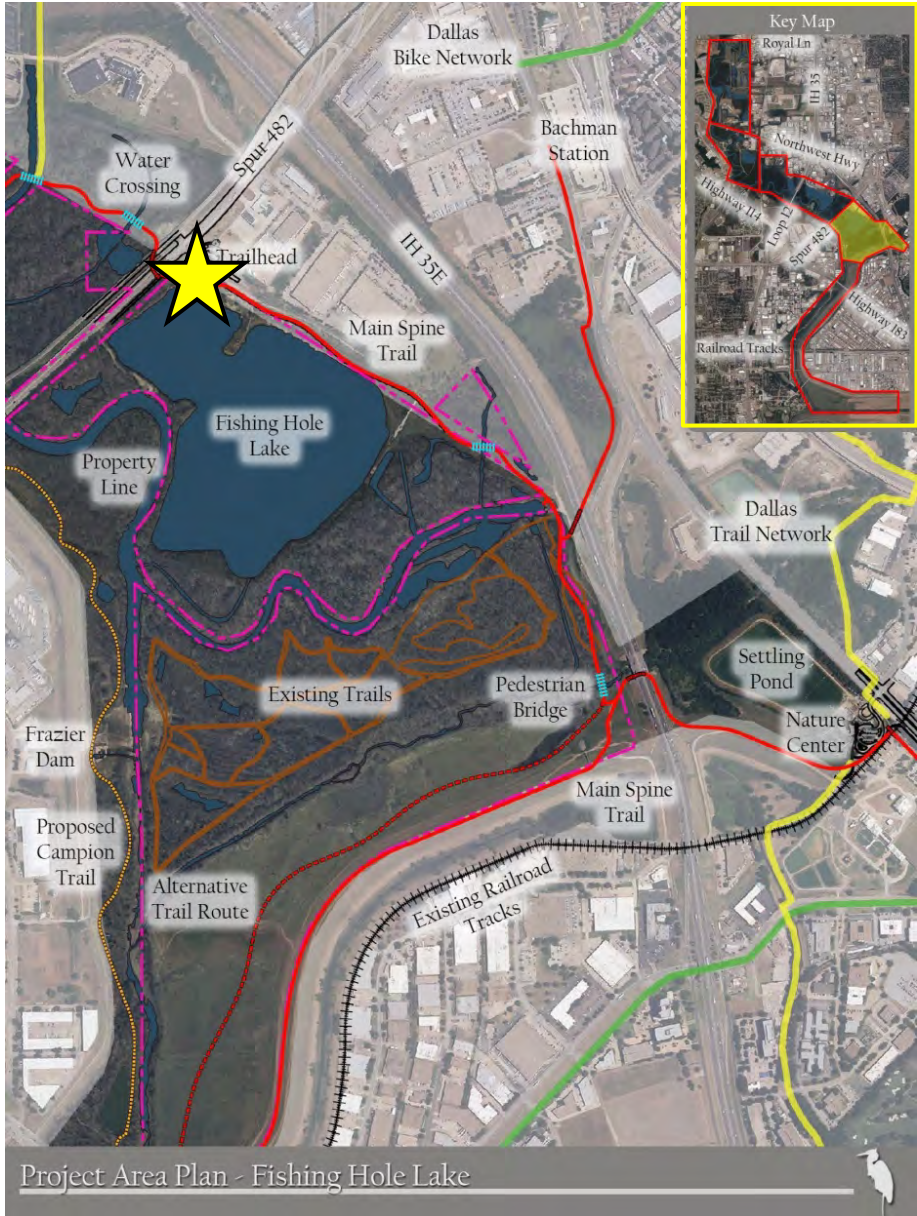
- Parking
- Trailhead/Interpretive Station
- Pavilion
- Nature Trail
- Canoe Launch
- Champion Trail Connection





# TRAIL NETWORK MASTER PLAN UPDATE

## Project Area Concepts: Fishing Hole Lake



Project Area Plan - Fishing Hole Lake

# TRAIL NETWORK MASTER PLAN UPDATE

16

## Project Area Concepts: Fishing Hole Lake

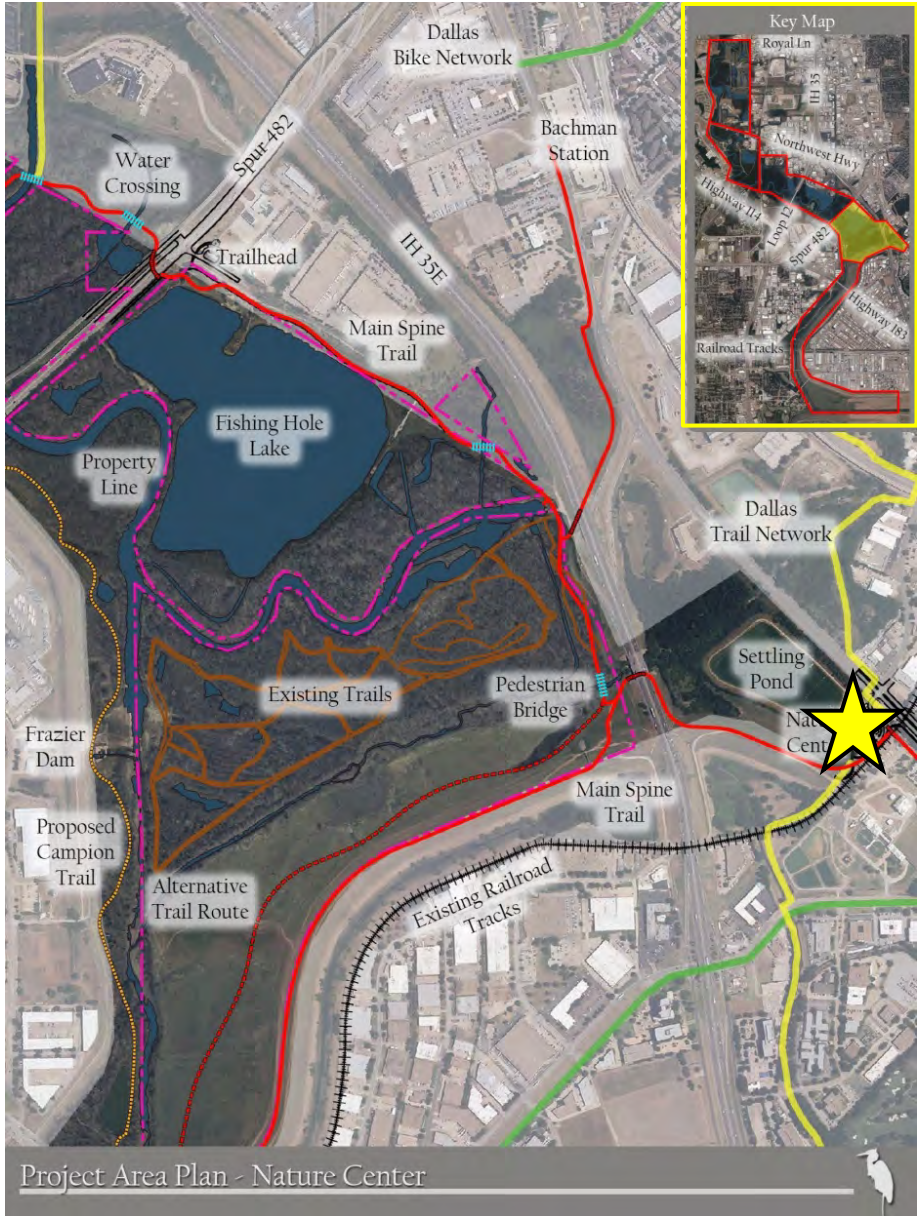
- Parking
- Pavilion
- Trailhead/Interpretive Station





# TRAIL NETWORK MASTER PLAN UPDATE

## Project Area Concepts: Nature Center



# TRAIL NETWORK MASTER PLAN UPDATE

18

## Project Area Concepts: Nature Center

- Nature Center
- Bird Observation Tower
- Deck
- Outdoor Learning Center
- Parking





# TRAIL NETWORK MASTER PLAN UPDATE

## Trail Types: Concrete

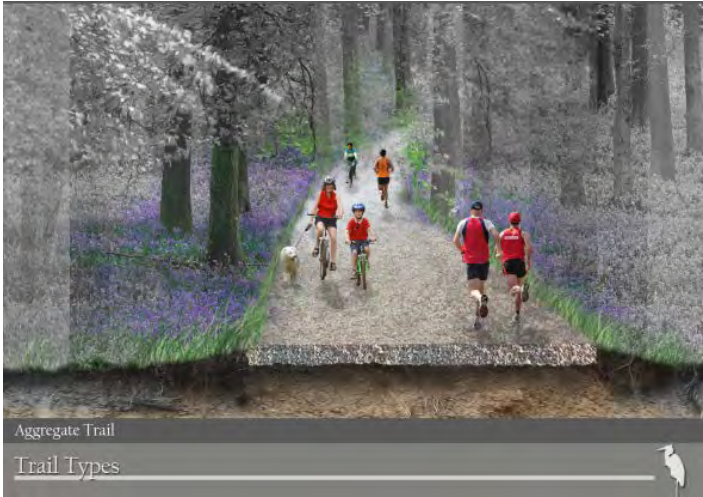


Concrete Trail Options



# TRAIL NETWORK MASTER PLAN UPDATE

## Trail Types: Aggregate





# TRAIL NETWORK MASTER PLAN UPDATE

 Trail Types:  
Nature



Compacted Subgrade Nature Trail



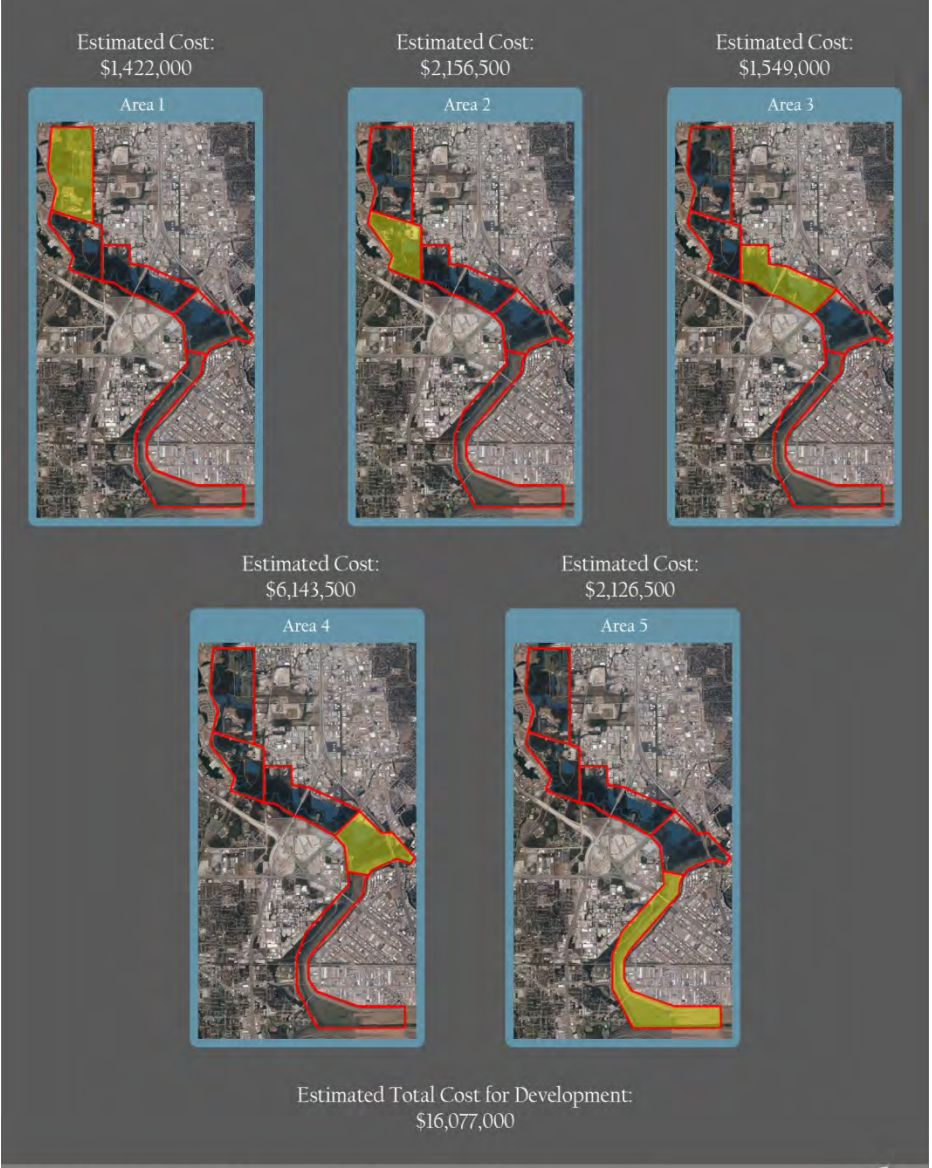
Mulch Trail with Aggregate Base

Nature Trail Options



# TRAIL NETWORK MASTER PLAN UPDATE

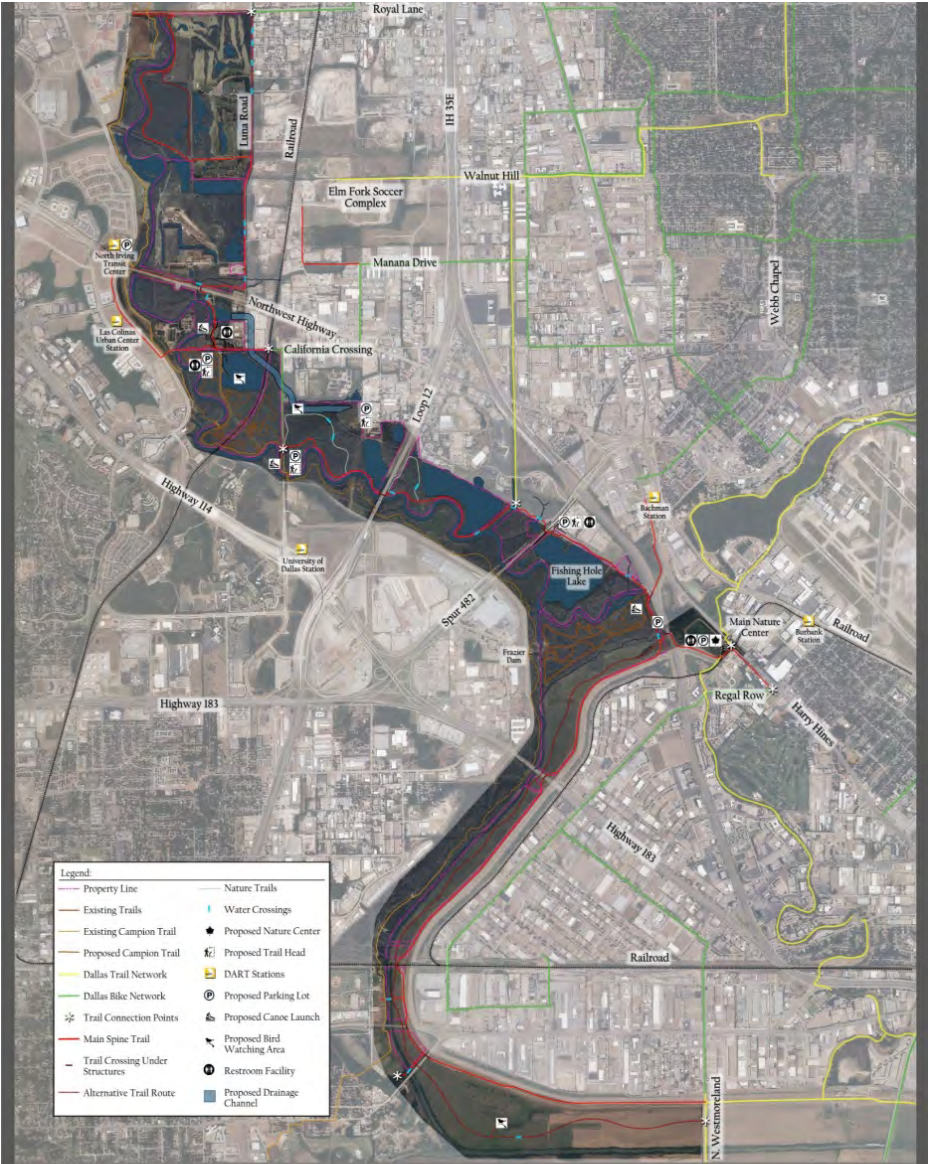
## Development Costs





# TRAIL NETWORK MASTER PLAN UPDATE

## Master Plan



Final Master Plan - Site Amenities





# **ELM FORK GREENBELT MASTER PLAN**

**Park & Recreation Board  
June 4, 2015**