

Dallas Park and Recreation Environmental Initiatives



**Dallas Park and Recreation Board Briefing
November 3, 2016**

CAPRA-Natural Resource Management Plan and Procedures

Dallas Park and Recreation met the accreditation standard

Plans for sensitive areas

Pollinator conservation efforts

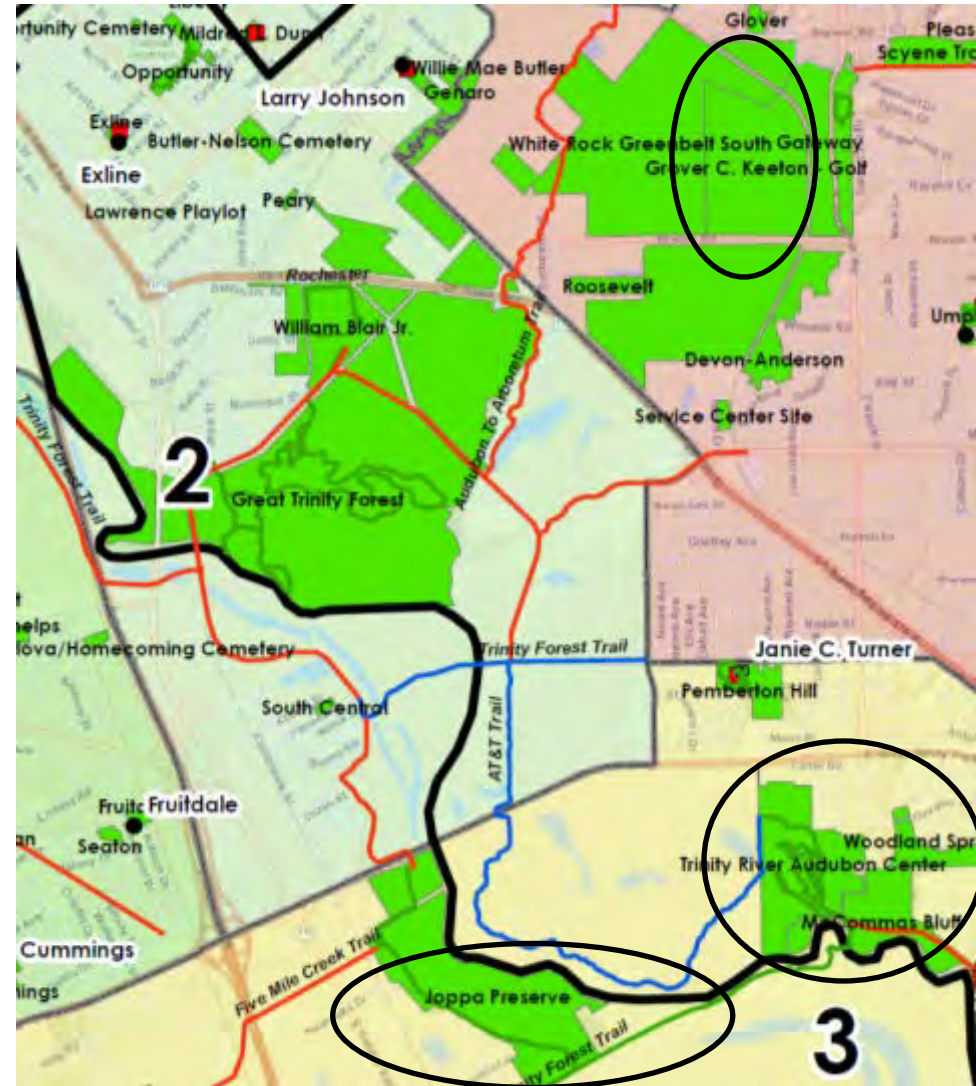
Conservation outreach and volunteer opportunities

Interagency cooperation



Feral Hog Abatement

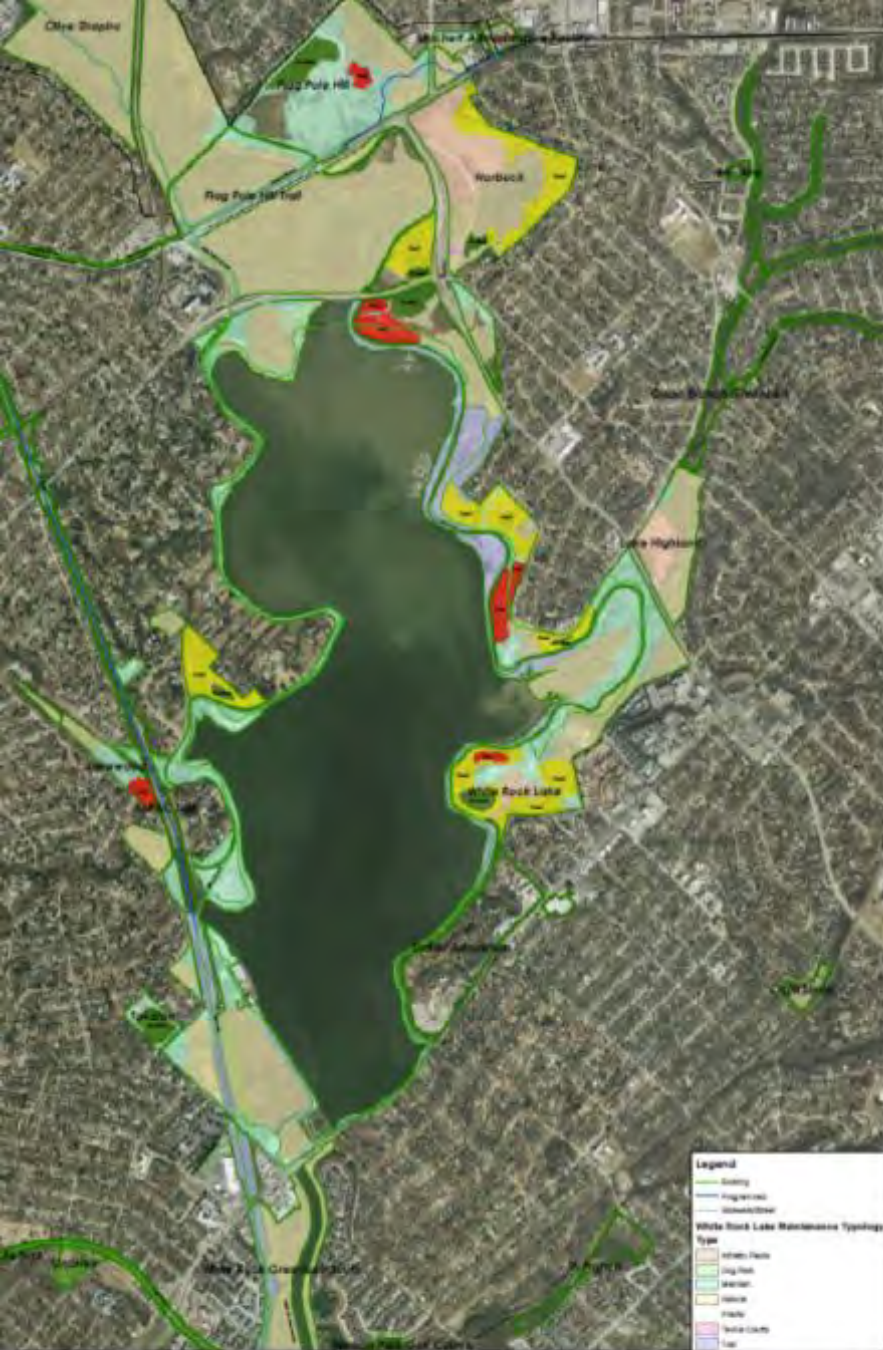
- Access to areas
- High hog numbers or extensive damage
- Limited scope of area
 - Grover C. Keeton Golf Course
 - Joppa Preserve
 - Great Trinity Forest Trails
 - TRAC
- ~50 removed
- Visibly reduced damages



White Rock Prairie Management

- **Formal management guidelines**
- **Multiple stakeholder presentations**
- **Prairie Assessment Team evaluation—May 11th**
- **Adopt-A-Prairie—Citizen Science/volunteer driven, within guidelines**
- **Modified, rotating mowing regime**





**White Rock Lake
Maintenance Typology**



Map Current as of 2015
Pine Point
Park and Recreation Department

White Rock Lake Area Prairie By the Numbers:

16 areas assessed

**2 on West Side Removed
1 borderline wetland identified**

162.3 acres assessed

**34.1 acres rated “Excellent”—21%
97.8 acres rated “Moderate”—60%
30.4 acres rated “Poor”—19%**

**1 “Globally Rare Plant Community”
identified during assessment**

Pollinator Conservation Efforts:



More pollinator gardens - 4

Modifying wildflower planting—more perennial plants

Identify additional wildflower areas

Modify mowing of Prairie areas

Partnerships with OEQ and TDG

Outreach - BioBlitz, Presentations, Media

Crawford Memorial Park



2016 BioBlitz

- **Nature Outreach**
- **Natural Resource Inventory**
- **Volunteer Involvement**
- **Interagency Cooperation**

William Blair Jr. Park—June 11th

← Projects

[Terms & Rules](#) | [Edit project](#)



William Blair Jr. Park (Dallas Park)

[Add observations to this project](#)

Stats

Totals

486

Observations »

178

Species »

28

People »

Most Observations



atassin

49 observations



sambiology

48 observations



elizrose

48 observations



mchlfx

37 observations



callmecarrie

37 observations

Most Species



sambiology

38 species



atassin

37 species



elizrose

32 species



hookbilledkite

31 species



callmecarrie

30 species

Most Observed Species



Pinkladies

13 observations



Great Egret

12 observations



Eastern Amberwing

11 observations



Red Swamp Crawfish

8 observations



Queen Anne's Lace

8 observations



» Members

15 members



[View all members »](#)

» Your membership

0 observations

» Add from your observations

[Download template for use in the bulk uploader](#)

» Export observations

[Atom](#) / [KML](#) / [CSV](#)


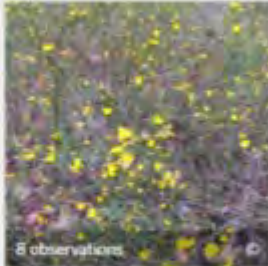













» Usage stats

Project curator tools

Harry S. Moss Park—Oct. 8th

Prairie and Pollinator Emphasis

The World 227 OBSERVATIONS 79 SPECIES 25 IDENTIFIERS 19 OBSERVERS

 <p>13 observations</p> <p>White Heath Aster (<i>Symphoricarpos ericoides</i>)</p>	 <p>8 observations</p> <p>Prairie Broomweed (<i>Achyrocline diacunculifolia</i>)</p>	 <p>7 observations</p> <p>Goldenrods (Genus: <i>Solidago</i>)</p>	 <p>6 observations</p> <p>Giant Ragweed (<i>Ambrosia trifida</i>)</p>	 <p>6 observations</p> <p>Switchgrass (<i>Panicum virgatum</i>)</p>
 <p>5 observations</p> <p>Purple passionflower (<i>Passiflora incarnata</i>)</p>	 <p>5 observations</p> <p>Monarda</p>	 <p>5 observations</p> <p>Carolina snailseed (<i>Coccoloba carolinensis</i>)</p>	 <p>5 observations</p> <p>Indiangrass (<i>Sorghastrum nutans</i>)</p>	 <p>5 observations</p> <p>Prairie Verbena (<i>Glandularia bipinnatifida</i>)</p>
 <p>5 observations</p> <p>Prairie False Foxglove</p>	 <p>4 observations</p> <p>Thistles</p>	 <p>4 observations</p> <p>False Boneset</p>	 <p>4 observations</p> <p>Giant Blue Sage</p>	 <p>4 observations</p> <p>Biz Bluestem</p>



17 observations CC

Gulf Fritillary
(Agraulis vanillae)



16 observations ©

Gray Hairstreak
(Strymon melinus)



16 observations CC

Pearl Crescent
(Phyciodes tharos)



9 observations CC

Honey Bee
(Apis mellifera)



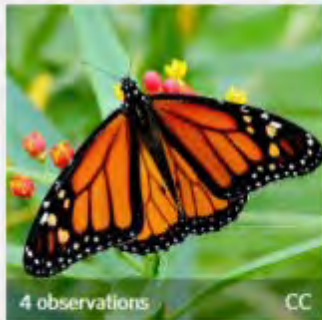
5 observations CC

Bluets (Damselflies)
(Genus Enallagma)



5 observations CC

Clouded Skipper
(Lerema accius)



4 observations CC

Monarch
(Danaus plexippus)



4 observations CC

Variegated Meadowha...
(Sympetrum corruptum)



4 observations CC

Poecilantrax lucifer



3 observations CC

Black Blister Beetle
(Epicauta pennsylvanica)



2 observations CC

Fiery Skipper



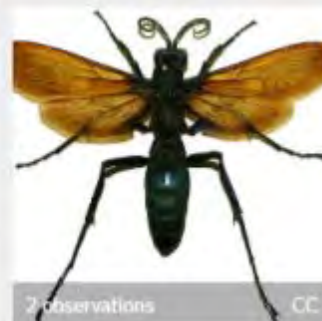
2 observations CC

Seven-spotted Ladybird



2 observations CC

Green Lacewings



2 observations CC

Spider Wasps



2 observations 11 CC

Palpada vinetorum

Internal and External Training Presentations

Natural Resources of Dallas



Unique Features, Challenges, and Conservation Opportunities

Brett Johnson

Sr. Environmental Coordinator/Urban Biologist
Park and Recreation Department

Dallas Habitat Sensitivity Training



Brett Johnson

Sr. Environmental Coordinator/Urban Biologist
Park and Recreation Department

Maintain Media Relationships

Birds near Dallas Love Field a growing concern



Richard Ray reports.

By: FOX4News.com Staff



POSTED: AUG 16 2016 09:10PM CDT
UPDATED: AUG 16 2016 10:21PM CDT



Dallas Park and Recreation Environmental Initiatives



**Dallas Park and Recreation Board Briefing
November 3, 2016**