

A presentation for

# Crawford Memorial Park Master Plan



Park & Recreation Board Meeting:  
**master plan & park programming update**

December 15, 2016



Dallas Park & Recreation



# Purpose of Briefing

Today's presentation will provide the City of Dallas Park & Recreation Board an overview of Crawford Memorial Park and how a well executed Master Plan could bring out its' full potential.

- Review of the existing conditions of the park as it is today
- Review of the park goals identified by the design team and the City of Dallas Park & Recreation Department
- Presentation of the final park master plan



# Why Redevelop Crawford Park?

- The original 1940's era plan for Crawford Memorial Park was never fully developed.

Evaluations of Crawford Memorial Park have revealed that this park contains an wealth of environmental characteristics which distinguishes this park from any other parks in Dallas. Due to this uniqueness and character, the City of Dallas Park & Recreation Department determined that Crawford Memorial Park should be considered for **'Signature Park'** status.

A **Signature Park** has been defined as:

a premier public park and recreation facility that is....

- financially sustainable
- adds to the quality of life for Dallas citizens
- meets the park and recreation needs of local and regional citizens
- helps to position the City of Dallas as a regional and national destination

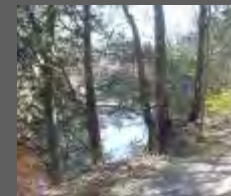
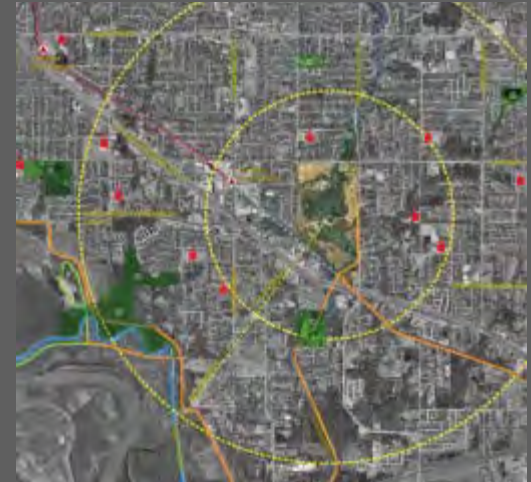


Original Crawford Memorial Park Master Plan

# Existing Conditions

## Inventory & Analysis

The design team investigated the site, performed historical research, and compiled data regarding the history of the park, documented existing site conditions, facilities, park strengths and park weaknesses.



# Existing Conditions: Recreational Amenities

## Prairie Creek Road Complex

- 5 soccer fields
- basketball court
- 2 parking lots (132 spaces total)
- playground
- picnic pavilion & restrooms



# Existing Conditions: Recreational Amenities

## Elam Road Complex

- 2 softball diamonds
- 1 baseball diamond
- 2 soccer fields
- 1 football/flex field
- parking lot (155 spaces)



## Trail System

- 2.7 mile trail loop (concrete/asphalt mix)



# Existing Conditions: Maintenance Facility

## Maintenance facility

- 8' chain link fence encompasses approximately 10 acres
- surrounded by pine trees to the north and lowland woods/floodplain to the south
- small office with restrooms
- contains multiple greenhouses (rented to the public)
- multiple metal sheds and storage facilities housing equipment and materials



# Existing Conditions: Black Land Prairie & Post Oak Savannah

## Black Land Prairie (27.1 acres)

- southern end of the park
- surrounded and framed by woodlands
- native black land prairie grasses with minimal impact
- few soft trails



## Post Oak Savannah (49.6 acres)

- western edge of the park
- scattered groves of post-oak and black jack oaks (30'-50' canopy)
- native and turf grasses damaged
- sandy-clay soils are eroding from impacts
- numerous man-made soft trails





# Existing Conditions: Prairie Creek

## Prairie Creek

- meandering creek (1.4 miles)
- surrounded by heavy vegetation (lowland woods and non-native privet)
- limited access due to dense undergrowth
- water clarity varies from murky (>6" visibility) in the upper end to fairly clear (2' visibility) in the lower end
- former lake with dam structure near the pedestrian bridge
- City currently has water rights for a 10 acre lake, with 48 acre-feet of volume
  - original construction ~1960
  - concrete debris shows spillway failure
  - ~8 ft. of silt at original outfall structure



# Existing Conditions: Austin Chalk Escarpment Area

## austin chalk escarpment

- southeast portion of the park from prairie creek road to prairie creek
- exposed austin chalk rock outcroppings
- mix of oak and pine trees
- history of atv, motorcycle and horse riding has causing significant erosion impacts
- citizen concerns forced a closure to atv/motorcycle use in 2004



# Master Plan Goals and Objectives

## Park Goals and Objectives

The design team worked with the City of Dallas Park & Recreation staff to determine the overall goals and objectives for the project.

### *Master Plan Objectives*

- Elevate Crawford Memorial Park to the status of **Signature Park**
- Assist in **meeting the recreational needs** of the local community and city as a whole
- Preserve and capitalize on the **key assets** of the park
- Create a **sense of identity** and place
- Improve park **safety**
- Promote **sustainability**
- Increase **access** to the special places within the park

# Master Plan Development

## Conceptual Master Plan Study

Through a series of meetings with city staff and design team workshops, the conceptual plan evolved through a design development process that balanced programming, preservation of key assets and introduced new park features and improvements.



# Master Plan Development

## Final Concept Master Plan

After working with park department staff and responding to the identified community needs, the design team finalized the conceptual plan, including the proposed phasing of development.



# Master Plan Development

## Public Art Master Plan

Through the Office of Cultural Affairs and in collaboration with the team, Brad Goldberg has prepared a master plan for public art. This plan identifies art opportunities that will enhance the park's distinctive character.

### art opportunities:

- lake spillway
- sculptural gateway entrances
- skate park
- amphitheater
- boat dock and fishing boardwalks
- signature pavilion w/architect
- outdoor room



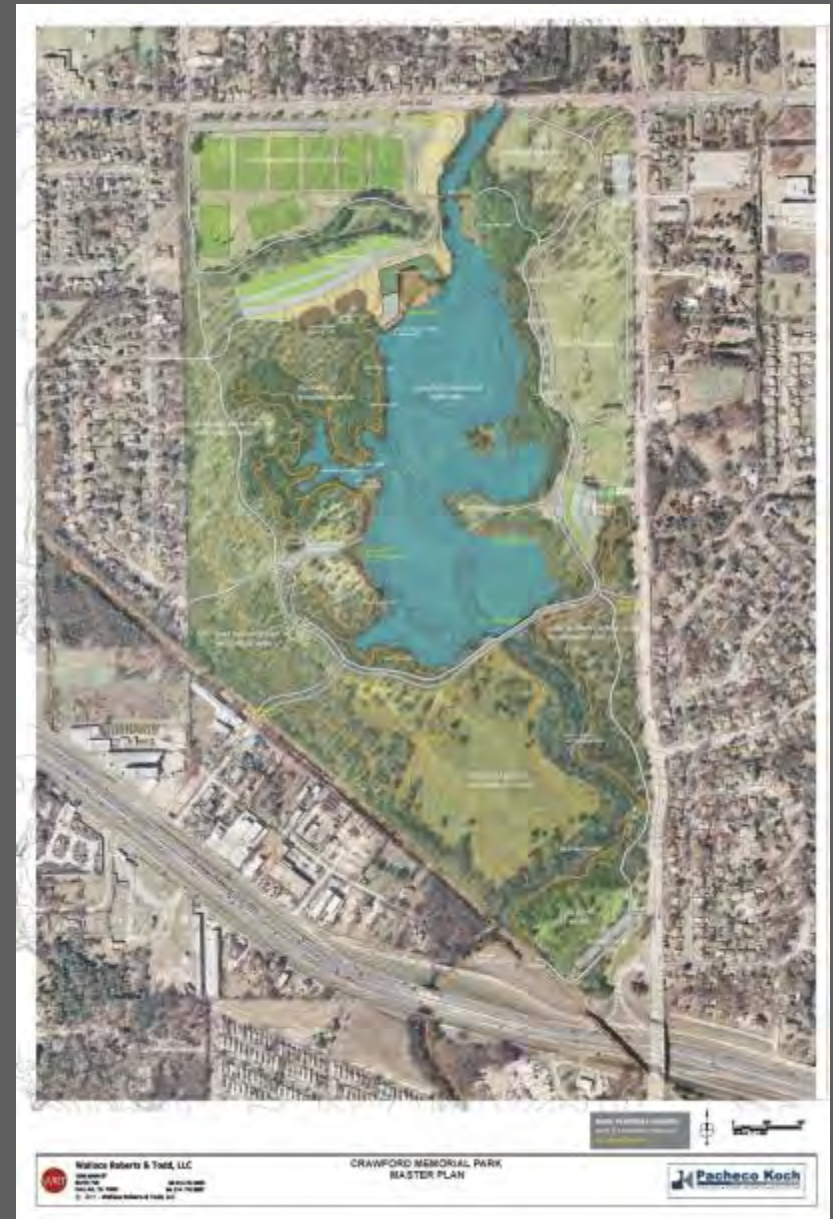
# Park Plan

## Final Park Master Plan

The master plan is an rendered version of the final park master plan.

The illustrative master plan highlights the entire park layout and includes improvements, park amenities, and the spatial relationships between the various park uses.

Master plan was presented to the Park and Recreation Board Planning & Design Committee in November 2011.



# Park Plan

## Phasing

The implementation of a large scale park re-development takes time, dedication, and strategic phasing of improvements.

Actual phasing of park improvements will be based upon available funding, the evolving needs of the city and local community, direction from the City Council and Park & Recreation Board, and future stakeholder input.

The following slides will display the proposed improvements throughout Crawford Memorial Park.





# Crawford Lake

## Amenities

- 45-acre to 50-acre lake
- dam structure with artistic spillway
- north trail crossing over prairie creek
- lake edge erosion control
- temporary boat access
- south trail loop



Black Hoof Dam at Lenexa Lake - Kansas

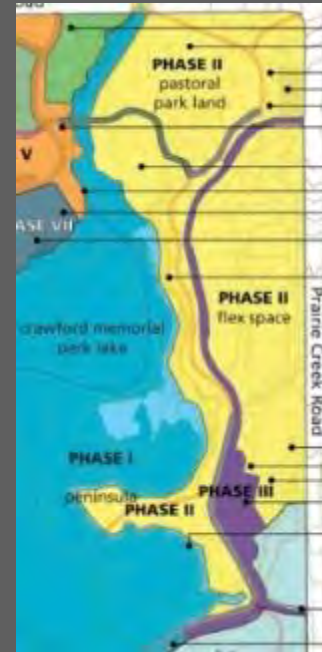


Natural Waterfall Spillway

# East Park Renovation

## Amenities

- flex space restoration
- tree canopy play area
- large picnic pavilion
- north parking expansion (71 spaces)
- 2 basketball courts
- 2 tennis courts
- north and south restroom facilities
- east lake trail and lake overlooks
- artistic boardwalk & fishing pier



# Lake Ring Road

## Amenities

- loop road around Crawford Lake with parallel parking
- east trail improvements
- boat ramp
- southeast parking expansion (120 spaces)
- southwest artistic boardwalk and fishing pier
- southeast and southwest sculptural gateway



# Northwest Athletic Complex

## Amenities

- access-controlled competition level soccer fields
- parking expansion along Elam road
- concessions and restroom facility
- lake-source irrigation



# Main Park Entrance

## Amenities

- main park entrance gateway on Elam Road
- entrance plaza
- skate park
- event access road
- parking expansion (268 permanent spaces, 262 overflow spaces)
- canoe / kayak rental facility

*\*this phase requires the relocation of the park maintenance facility to another location within the park, or adjacent to the south edge of the park.*



# West Park Renovation

## Amenities

- post oak savannah restoration
- west trail improvements
- discovery woods garden with suspension bridge
- west picnic pavilion with restrooms
- zip line concession



# Recreation Center

## Amenities

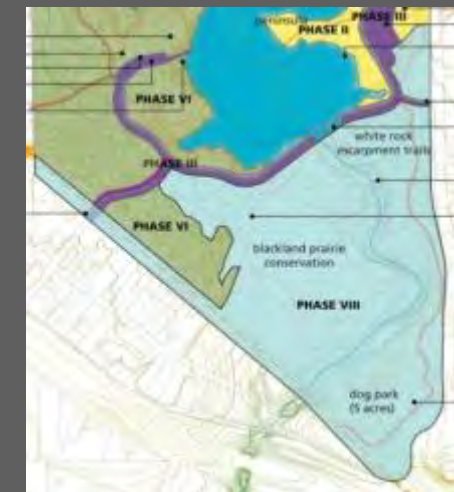
- recreation center
- restaurant
- boat house
- amphitheater



# South Park Renovation

## Amenities

- 5 acre dog park with parking
- black land prairie conservation
- outdoor room
- prairie nature trails
- white rock escarpment trails
- Kleberg & Prairie Creek Trail extensions
- railroad trestle bridge renovation (for Kleberg Trail)

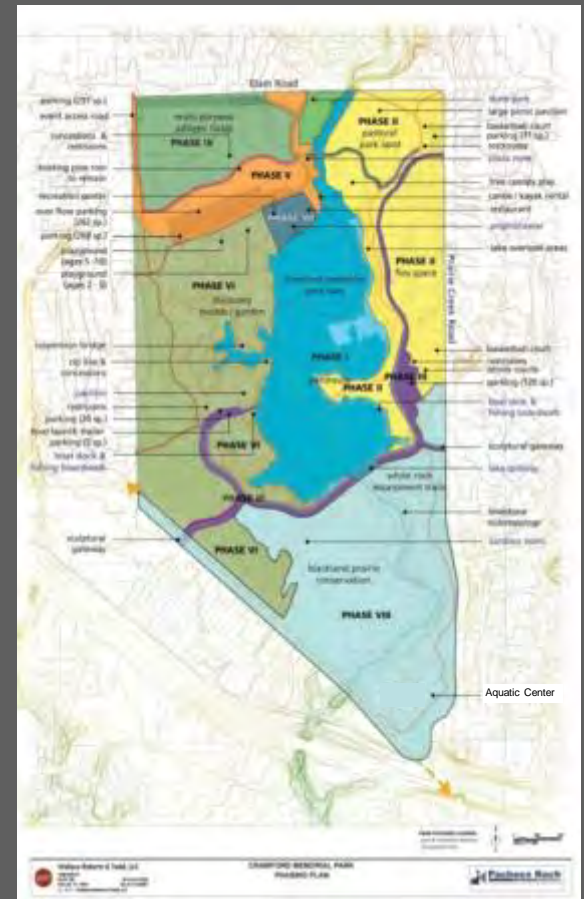




# Aquatic Center

## Amenities

- regional aquatic center (size, location, and level of finish to be determined based upon anticipate future needs of the city and community)
- the adoption of the 2015 *Aquatics Master Plan* included revision to the *Crawford Master Plan* to replace the proposed dog park with the aquatic center



Crawford Memorial Park Master Plan – December 15, 2016

# Crawford Memorial Park Regional Family Aquatic Center



**SITE PLAN**

**Facility features include:**

- 8 lane lap pool
- Lazy River – about 200 lf
- Children’s Pool – zero depth entry, interactive play feature, floor geysers
- Plunge Pool – 2 slides
- Bathhouse (locker rooms, 2 unisex change rooms, concession stand, office, tickets, lifeguard room)
- Pool filtration equipment building
- Shade structures

**Park and Recreation Board approved the Aquatics Master Plan Update on October 8, 2015**

# Master Plan Implementation Costs

## Cost

- Estimated total master plan implementation costs of \$60.5M
- \$21.4M of total cost for new recreation center and amphitheater



# Crawford Memorial Park Master Plan



Comments and Questions?



A presentation for

# Crawford Memorial Park Master Plan



Park & Recreation Board Meeting:  
**master plan & park programming update**

December 15, 2016



Dallas Park & Recreation

