



**CEDAR RIDGE**  
**PRESERVE**

*Managed by Audubon Dallas*



Dallas Park & Recreation

## **Annual Report, 2021-2022**



# ABOUT CEDAR RIDGE PRESERVE



## PHYSICAL CHARACTERISTICS

- The Preserve is an “open” space operated by Audubon Dallas under a Management agreement with the City of Dallas
- 633 Acres (0.995 sq. mi)
- Mostly wooded with 5% prairie, 0.5% aquatic
- Topology is a plateau and escarpment with 180-foot elevation change
- Roughly half of the area is untouched

## AMENITIES

- About 9 miles of hiking trails (.25 wheelchair accessible)
- Education building/classroom
- Restrooms
- Native plant pollinator/five-senses gardens
- 84 trail benches, 2 lookout towers, 1 observation deck, 1 bird blind
- Amphitheater-style stage with lighting, and bench seating for 70
- 10-15 Picnic tables
- 245 internal parking spaces
- Internet-accessible Weather Station
- Bottle refilling/pet drinker water fountain



# OVERVIEW

## THIS WAS A GOOD YEAR

### THE VERY GOOD

- Excellent results on all Performance Measures
- The Preserve remains very popular
- We made significant improvements to the grounds.

### WE'RE NOT SURE

- Attendance remained quite high, especially on Saturdays and Sundays
- Lots and lots of dogs
- We have had a return to pre-covid patterns of use

### AND, WHAT WE LEARNED

- It is difficult to hire staff at the moment
- It pays to be present
- We are a preserve



# VISITORS

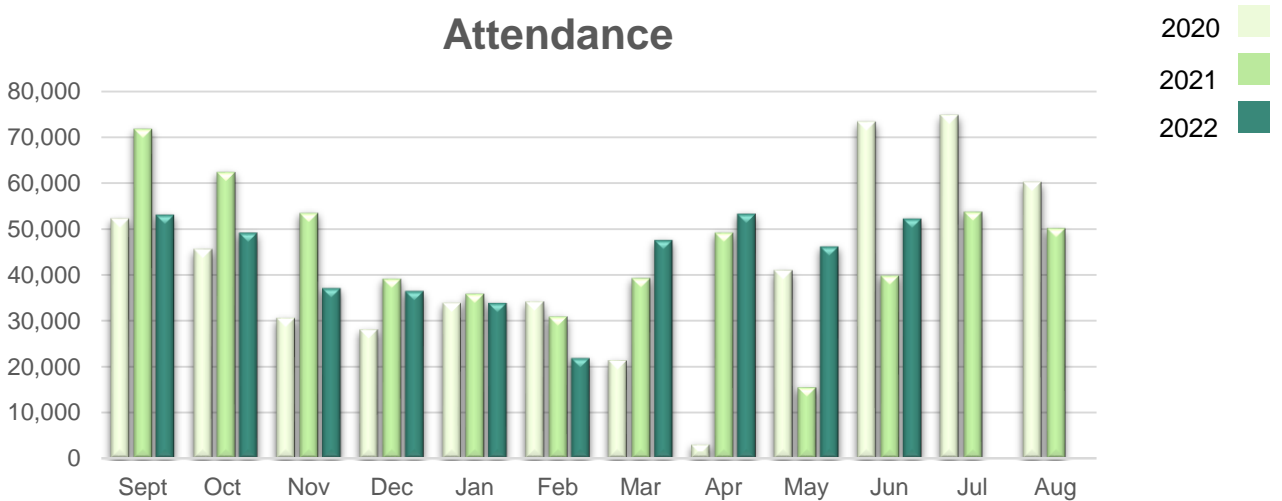
FY2022

FY2020: 498,000

FY2021: 541,000

FY2022: ca 525,000

## Attendance



Three Year Comparison of Attendance

# OUR VISITORS

Our visitors represent a diverse cross-section of the DFW area population. Attendance remained high in 2022. We are projecting an attendance of 525,000.



Dog attendance also remained high this year. We reconfirmed an average of approx. 800 dogs a week being regularly walked in the preserve.

Unfortunately, we have too many people who insist on walking their dogs off leash, bringing aggressive dogs into the preserve, or walking them in extreme heat.



# PARKING



Although overall attendance is high, we returned to pre-covid (i.e. more predictable) patterns of use. We need to manage only morning and evening traffic and we haven't had a return of illegal parking in the Oncor right-of-way. CRP visitors still occupy ALL Park in the Woods Recreation Center parking on Saturday and Sunday mornings. This is now interfering with Recreation Center Programs.

Although we normally contract with ACE parking to assist with summer parking, this summer, they could not find enough employees to meet their obligations. We are on our own for this summer season. Volunteers are filling the gap, but this is not a sustainable solution.





# VOLUNTEERISM



Volunteers do all kinds of tasks. They plant native plants, remove invasive plants, give "mini" classes to visitors, build/repair trails, paint, build benches/picnic tables, fences, put mulch and crushed concrete on the trails, pick up branches and trash, conduct tours, park cars, repair graphics and much, much more.

They also lead some important initiatives such as habitat restoration, conservation research, and liaising with conservation and service organizations.

This year we also had three impressive eagle scout projects completed.

**We expect to have almost 5000, volunteer hours by the end of the year.**

**Almost 50% of these hours have been completed by five amazing long-time volunteers.**

**Wood Cantrell  
Frank Hazzard  
Brett Schubauer  
Gary Underwood  
Tom Willard**

# ACCOMPLISHMENTS



**EDUCATIONAL OPPORTUNITIES**



**INVASIVE SPECIES REMOVAL**



**HABITAT RESTORATION AND MAINTENANCE**



**REINTRODUCTION OF NATIVE PLANTS**



**RESTORATION OF THE "OLD NORTH TRAIL"**



**TRAIL MAINTENANCE**



**LONG-TERM SCIENCE PROJECTS**



**PARKING LOT REPAIR**



**NATIVE PLANT PROPAGATION**



**NATIVE PLANT PROPAGATION**



**DIRECTIONAL AND SCIENTIFIC SIGNAGE**



**PAID STAFF SUPPORT**



**CITY REPAIR OF BUILDINGS**



**AQUATIC RESTORATION**



**STRATEGIC PLANNING**



- PERFORMANCE MEASURES



- DONE/SATISFACTORY



- PROGRESS



- NO ACTION



## REINTRODUCING NATIVE PLANTS



- **Goal for CY2022:** 800 -1,000 plants
- Plantings focus on prairies, where we also remove invasive species.
- This year, we propagated over 700 plants from seed collected in and near the preserve.  
**Progress:** Through June, we have planted, at least 150 plants, **another 1,200** are ready for November plantings.

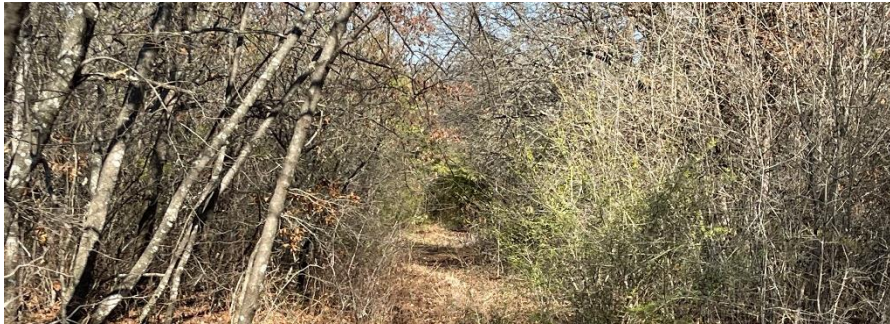
## HABITAT RESTORATION AND MAINTENANCE

- **Goal for the CY2022:** 400-600 hrs.
- **Progress:** Through June, **204 hours were** spent on prairie maintenance and restoration. An additional **200 hours** were spent on restoration of the post oak forest.
- We are just now entering the busy season for habitat restoration. We expect to exceed our goal.



## INVASIVE SPECIES REMOVAL

- **Goal for CY 2022:** 900-1000 volunteer hours.
- **Progress:** Through June 602 hrs. were devoted to invasive species removal. We anticipate exceeding this goal by the end of the year.  
*Primary, invasive plants are privet, hedge parsley and Johnson grass. We also remove non-native honey suckle, thistle, ligustrum, nandina and a few others.*



## RESTORATION OF THE OLD NORTH TRAIL (ONT)

- **Goal for CY 2022:** .6 miles of the trail restored
- **Progress:** Through June, .3 miles have been assessed and cleaned up.

The (ONT) is a broad, relatively flat trail that has fallen out of use. We are restoring that trail as one to be exclusively used by birders. It will be a **No Dogs** trail. It will add approximately .6 miles to our trail system.

## EDUCATION

PROGRAMS	WHO	NATURALIST GROUPS
Bird walks	Home Schools	North Texas Master Naturalists
Prairie walks	Primary Schools	Native Prairies Association of Texas
Junior Ranger Program	High Schools	Native Plant Society of Texas
Trail Head Talks	Colleges	Mycological Society
One-on-one engagement	Visitors, Scouts, Athletic groups	

- **Goal for CY 2022:** 80-90 educational events.
  - ✓ Actively solicited one-on-one educational interactions through the CRP Ambassador program.
  - ✓ Education kiosk near the chimney swift towers reworked, including new graphics
  - ✓ Actively engaged scout, home schoolers, athletic groups visiting the Preserve
  - ✓ REI began bimonthly educational "Trailside" talks at CRP
  - ✓ Three guided tours
  - ✓ Three Eagle Scout Projects
  - ✓ Started a plant demonstration garden (with plant identification labels and links to more information).
  - ✓ Continue building relationships with some schools.
- **Progress:** As of June, we logged 54 Educational Events and well over 350 one-on-one interactions. We expect to meet this goal.



## TRAIL/INFRASTRUCTURE

### Progress:

- Continue improving weather resistance and erosion control of vulnerable trails
- General grooming of the trails
- Over two miles of trail upgraded, .3 miles restored
- Wayfinding system of the outer loop trails has been completed
- Angry honeybees successfully rehomed and Trout Lilly trail reopened.
- 700 volunteer hours on trails through June

## IMPROVEMENTS TO THE FACILITY

### Progress:

- Improved the parking lot (new stops, mulch, flex base)
- Oncor rebuilt the fence they damaged during mowing.
- We installed several hundred feet of cedar fencing
- Improved entrance to the pollinator garden
- New pollinator garden at handicap entrance
- New observation deck/bird blind
- Repaired observation tower on Cat Tail Pond Trail
- Made and installed five new cedar log benches
- We painted a lot of stuff



### STRATEGIC PLANNING

**Progress:**

- On June 2<sup>nd</sup> 2021, Pariveda hosted and facilitated a Strategic Planning Workshop for CRP.
- We plan to restart planning meetings in August.

### NATIVE PLANT PROPAGATION

**Progress:**

- We will have over 700 plants grown from seed collected in and around the preserve to plant throughout the Preserve, give away, and sell.



## FY2021 Budget Summary (ends 8/31/2022)

Revenue	\$223,847
Expenses	\$273,285
Net	* (49,438)

\*Deficit off-set through Audubon Dallas reserves

## Board Summary

Race/Ethnicity	Male	Female
Hispanic	1	0
Black	0	0
Asian	0	0
Non-Hispanic White	4	4
Totals	5	4



# OUR GOALS FY 2022-23



# IN CLOSING...



It is our belief that addressing the needs of all users will be a challenge we need to face soon and face together.

Another journey around the sun, and. . . we are still here. The Preserve is used, well used, and often over-used by many. It seems that it is more than loved. It is important, necessary, and even vital. Unfortunately, it is all too easy to forget that some of the many that count on the Preserve are the living things that call Cedar Ridge Preserve home.



**WE LOOK FORWARD TO AN EXCITING 2023!**