



Dallas Park & Recreation

## Trail Wayfinding Update

**Park and Recreation Board**  
**April 8, 2020**

# Purpose

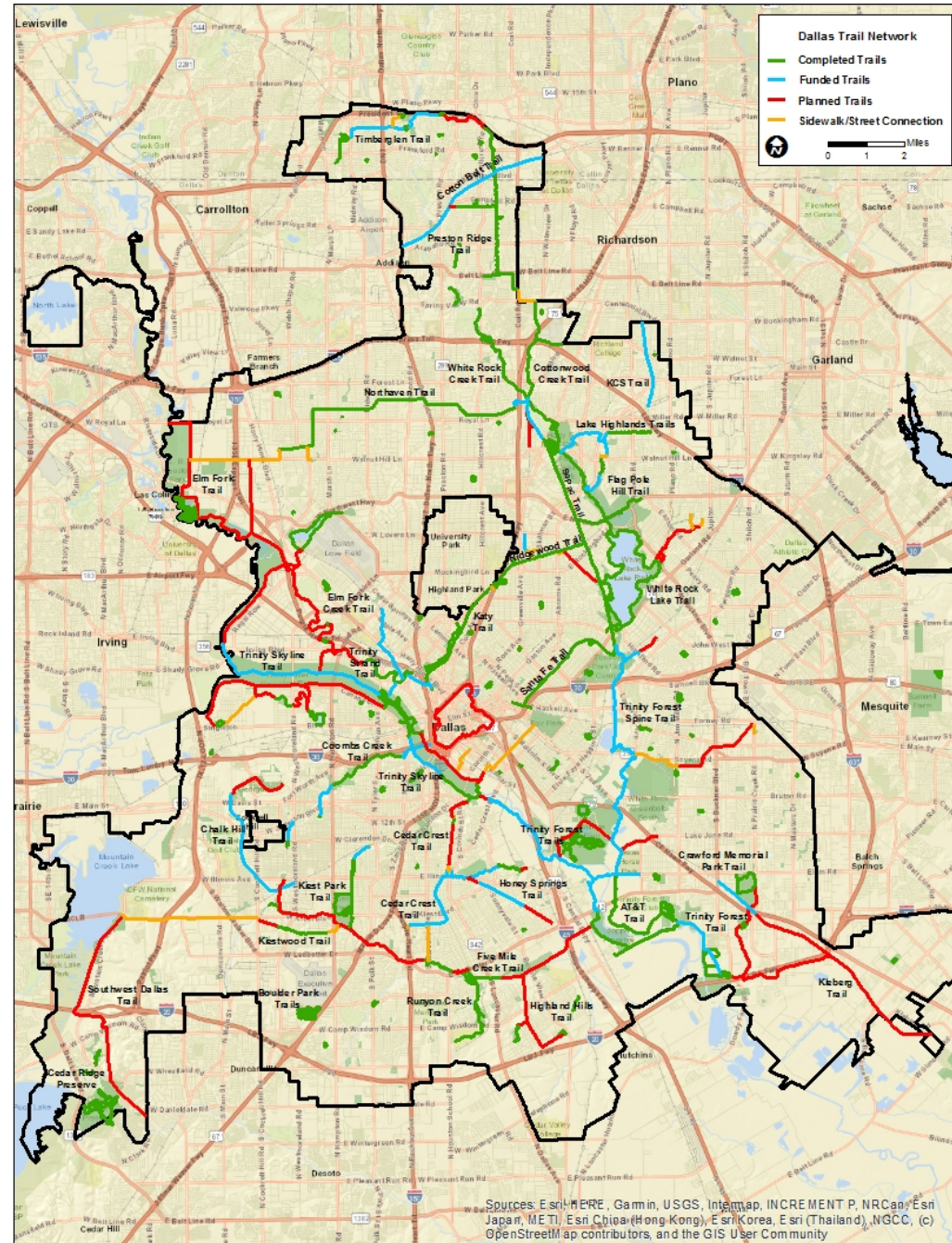
To provide an overview of the trail system and provide recommendations on trail wayfinding and signage

As the trail program expands and interconnects, a unified and complete system of wayfinding is needed for trail identification and user navigation.

# Trail Network Status

- Completed Trails: 163 miles
- Funded Trails: 57 miles
- Planned Trail: 89 miles

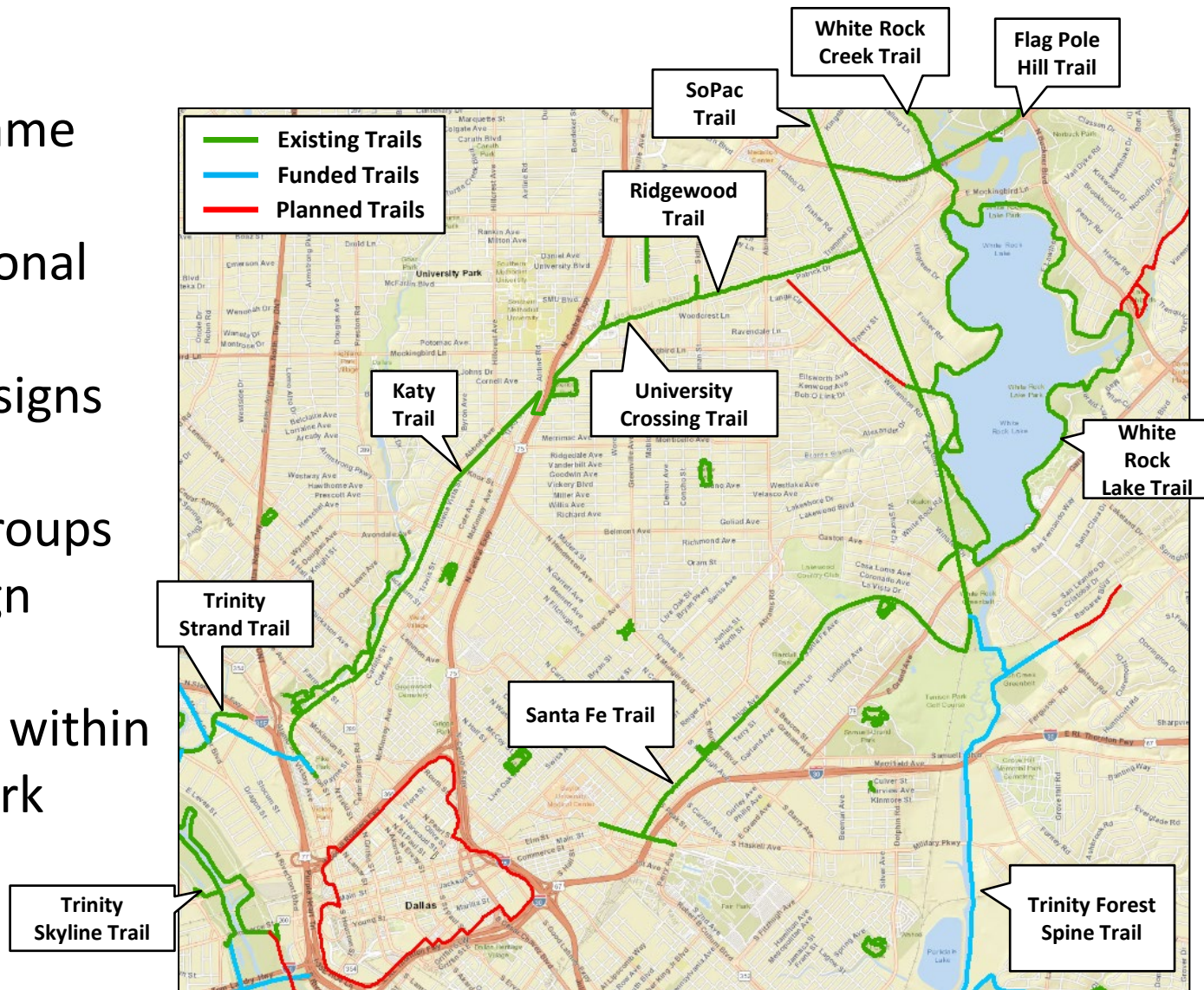
Total Network: 309 miles



# Trail Connectivity and Wayfinding Example

## Key Issues

- Limited trail name signage
- Limited directional signage
- Limited street signs at crossings
- Four Friends groups with four design aesthetics
- On-street gaps within the trail network



# Current Types of Signs

- Standard Manual on Uniform Traffic Control Devices (MUTCD) Signs
- Custom trail signs (public and privately funded)



# Current Wayfinding Examples

## Standard MUTCD Signs

Cost: \$100 - \$200 per sign  
(8 locations)

FHWA Manual on Uniform Traffic Control Devices  
Chapter 9B Section 9B.20 Bicycle Guide Signs



# Current Wayfinding Examples

Santa Fe Trail Custom Signs  
Cost: \$1,500 per sign (10 locations)



# Current Wayfinding Examples

University Crossing Trail Custom Signs

Cost: \$23,603.91

Approx. \$3,400 per sign (7 locations)





# Current Wayfinding Examples

## Katy Trail Custom Signs

Cost: \$65,000

Approx. \$21,700 per location  
(3 locations)



# Current Wayfinding Examples

Custom Signs for the White Rock Creek Greenbelt Trail

Cost: \$25,000 per sign  
(4 locations)



# Items to Consider

## Implementation Considerations

- Installation and maintenance of standard wayfinding on existing and new linear and large loop trails, as needed
- Installation and maintenance of customized signs through public/private partnerships
- Having a citywide wayfinding system that can overlap with custom trail signs from a Friends group (i.e. Santa Fe Trail)
- Coordination with 2011 Dallas Bike Plan to close facility gaps and provide wayfinding
- Program phasing

## Design Standard Considerations

- Type of information to convey (neighborhoods, public destinations or assets, etc.) and sign hierarchy
- Use of City of Dallas and/or Park and Recreation Department logo, or other approved graphics
- Custom sign design review and approval process

# Recommendations

## Implementation

- Identify funding and begin installation of standard MUTCD wayfinding signs on existing and new trails
- Continue to work with Friends groups on customized signs and branding
- Integrate city-wide wayfinding system with custom trail signs from a Friends group (i.e. Santa Fe Trail)
- Coordination with other departments and agencies on wayfinding outside of Park and Recreation Department property (i.e. Northaven Trail, Katy Trail/University Crossing Trail)

## Design Standards

- Limit sign information to public destinations or assets
- Incorporate City of Dallas and/or Park and Recreation Department logo on all signs
- Develop a custom sign design review and approval process

# Next Steps

- Gather Park Board comments on the proposed recommendations
- Begin implementation of the trail wayfinding guidelines based on Park Board direction.



Dallas Park & Recreation

## Trail Wayfinding Update

**Park and Recreation Board**  
**April 8, 2020**