



# Dallas Park & Recreation

## Park Curfew Hours



Park and Recreation Board  
January 13, 2022

# Purpose

To facilitate an exploratory discussion and review of the park operational hours and impact to park safety



# Overview

- Safe Park Strategy
- Park Operational Hours
- At-A-Glance Preliminary Review
- Reservations Data
- Budget Allocation for Implementation
- 2022 Data Collection Strategy



# Safe Park Strategy

- Recent inquiries regarding park hours
- Last update of park operational hours (2010)
- Component of our Safe Park Strategy



# Park Operational Hours

CITY	OPEN HOURS	EXEMPTIONS
Arlington, TX	Neighborhood, Linear and Natural Area Parks: 5:00AM – 10:00PM Community & City Parks: 5:00AM – 12:00AM	Specific Parks listed as the exemption
Austin	5:00AM – 10:00PM	Unless posted otherwise
<b>DALLAS</b>	<b>5:00AM – 11:00PM</b>	
Denton	6:00AM – 10:00PM	
El Paso	6:00AM – 11:00PM	May 1 to October 1 Parks are closed from 11:00 p.m. to 6:00 a.m. October 2 to April 30 Parks are closed from 10:00 p.m. to 6:00 a.m. Downtown Parks Parks are closed from 1:00 a.m. to 6:00 a.m.
Fort Worth	5:00AM – 11:30PM	Unless posted otherwise
Houston	6:00AM – 11:00PM	Unless posted otherwise
San Antonio	5:00AM – 11:00PM	Times can be altered in association with Special Events, i.e. Easter, July 4 <sup>th</sup>

# At-A-Glance Preliminary Review

- No specific trends identified for high-level criminal offenses
- No specific time of occurrences for high-level criminal offenses
- A lack of oversight due to staff operational hours and staffing level
- Minimum Data

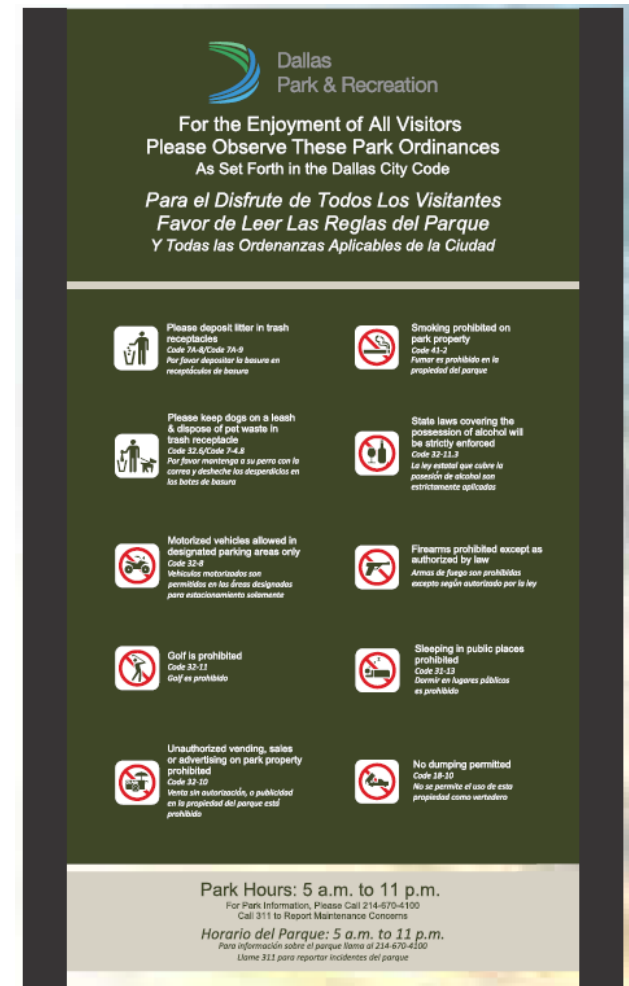
# Reservations Data

<b>Special Events Ending After 10:00PM</b>	
<b>Park Location</b>	<b>Event</b>
Griggs Park	Uptown Inc's Monday Movie Night @ Griggs
Reverchon Park	Texas Latino Pride
Munger Park	Junius Heights Movie Night
Ferguson Park	Church Summer Picnic
Miller Park	Miller Family Reunion
Moss Park	Royal Oaks Country Club 4 <sup>th</sup> of July
Reverchon Park	Carry the Load
Flag Pole Hill Park	Graduation Jam Session
Webb Chapel	William B. Travis Movie Night
Kidd Springs	Symphony in the Park
Lindsley	Hollywood Santa Monica Neighborhood Association Movie Night
Flag Pole Hill Park	Octoberfest
Balfour Beatty Annual BBQ	Reverchon
<b>Athletic Leagues Ending After 10:00PM (Practices and Games)</b>	
Dallas Sport and Social Club	
Big D Sports	
Go Kickball	
Lonestar Sports and Social Club	

# Budget Allocation for Implementation

Cost of a new sign \$1,050

- PMO estimates that the cost to install and retrofit signage is estimated at \$150,000 – 250,000





# 2022 Recommended Data Collection Strategy

Log Activity from 9:00PM-11:00PM

- Security
  - Hiring of 8 additional Marshals (revised work schedules)
- Monitor Reservations
- Trail Use
  - People Counters
- Community Input (Pilot survey/adjacent park neighbors)
- Update Park Board in six months on data findings

# Park Board Feedback?



# Dallas Park & Recreation

## Park Curfew Hours



Park and Recreation Board  
January 13, 2022