



Dallas Park & Recreation

City and DISD Interlocal Agreement



Park and Recreation Board
February 1, 2018

Background

- A ten minute walk (.5 miles) is a national standard for availability and utilization of parkland for residents
 - Component of the Trust for Public Land (TPL) Parkscore
- City has joined Trust for Public Land's 10 minute walk initiative to have as many residents as possible within .5 miles/10 minute walk of a park/open space
- Common strategy to increase the percentage of residents is to partner with school districts to make campuses available for use after school hours and on weekends

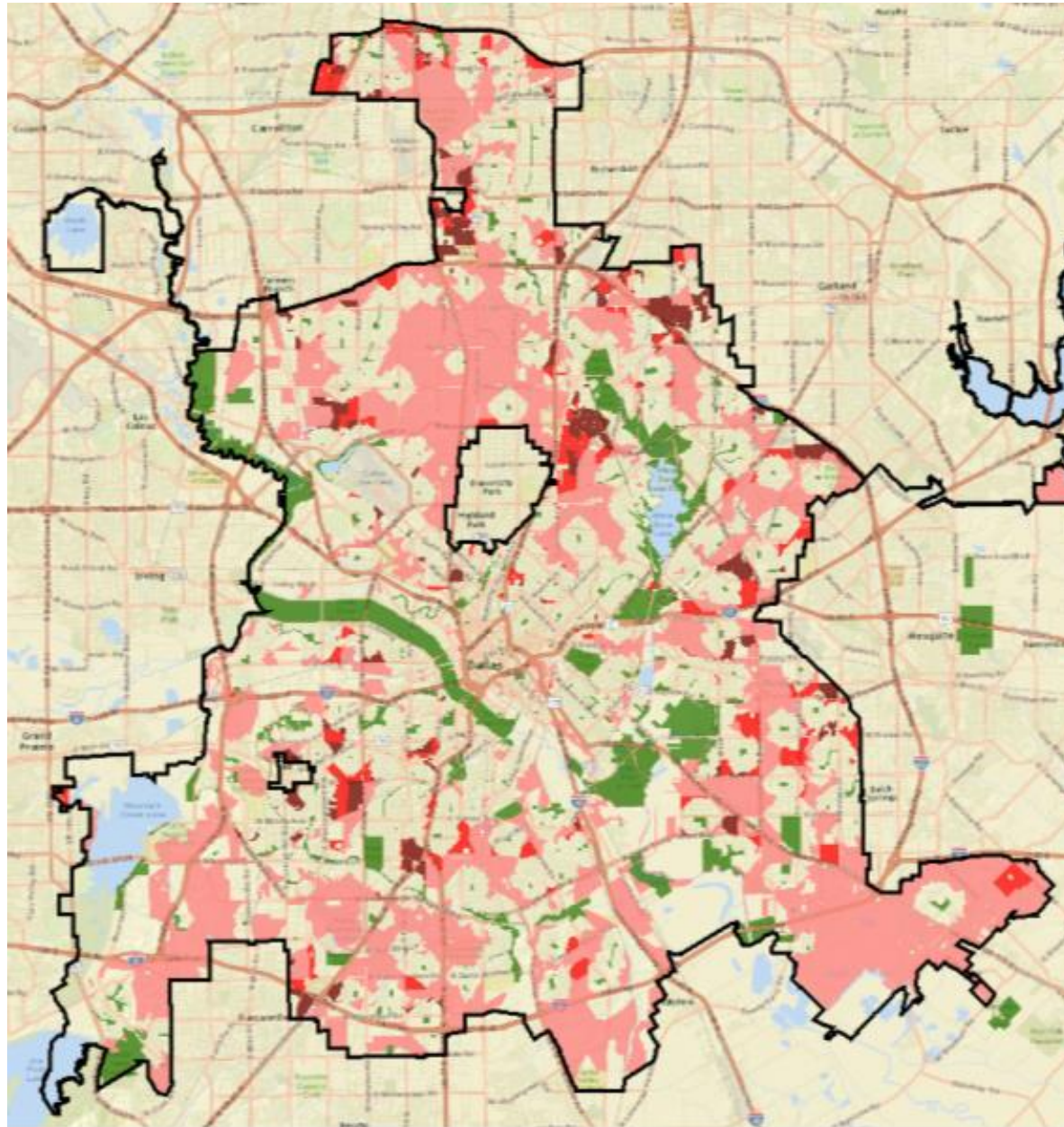
Background

- Partnering with school districts is a model that has been employed for around 100 years beginning in Seattle and is currently in use in major cities across the US
 - Chicago
 - Denver
 - Houston
 - New York
 - San Francisco

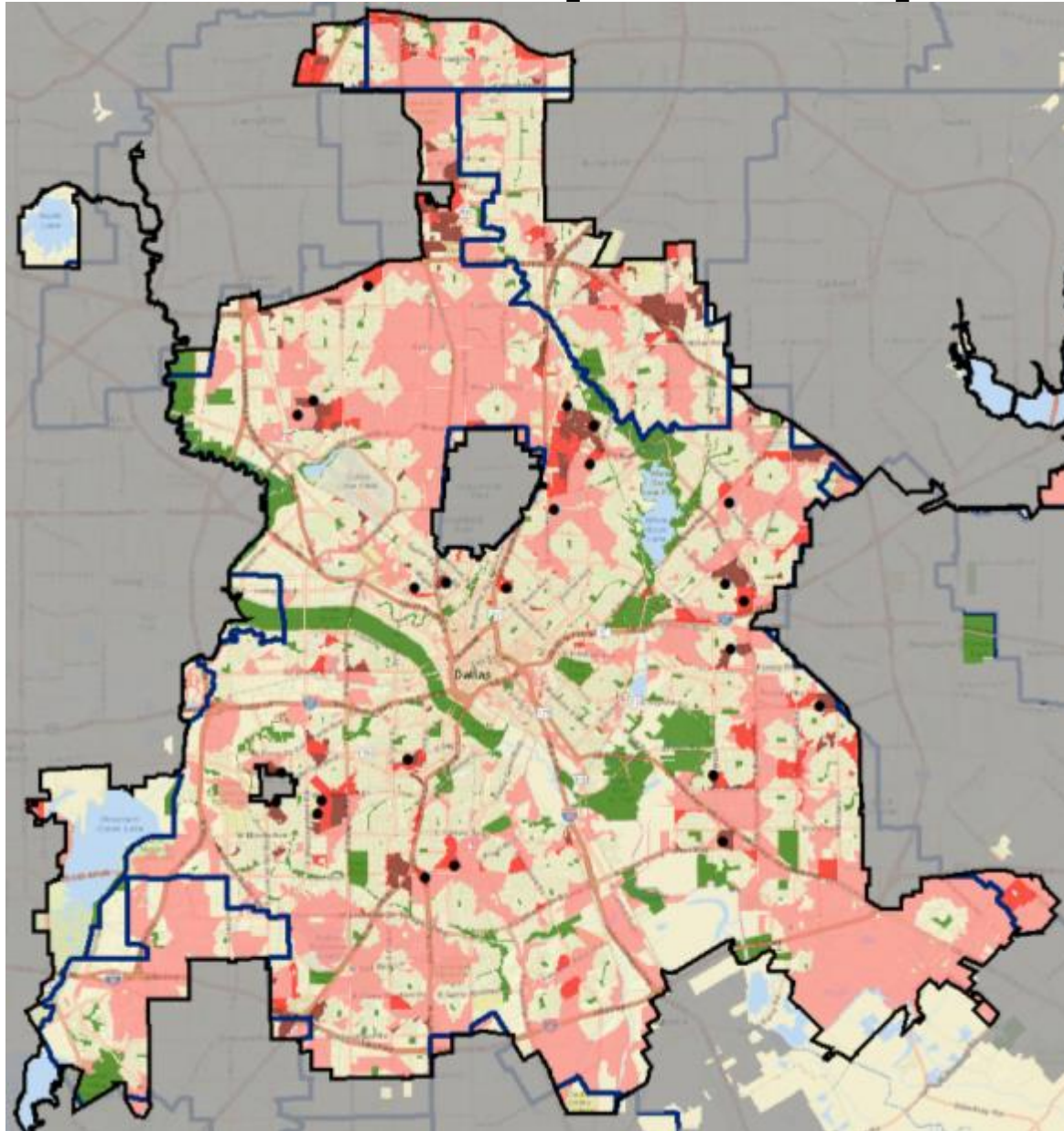
Background

- After conducting an analysis, staff determined that by partnering with school districts to affect the most underserved areas of the City, the percentage of residents within the 10 minute walk measure could increase to 70%
 - Currently TPL estimates 58% of residents live within a 10 minute walk
- Staff identified 25 DISD schools that could most significantly impact the change
- These specific schools are the ones that can best fill the identified parkland service gaps

Background



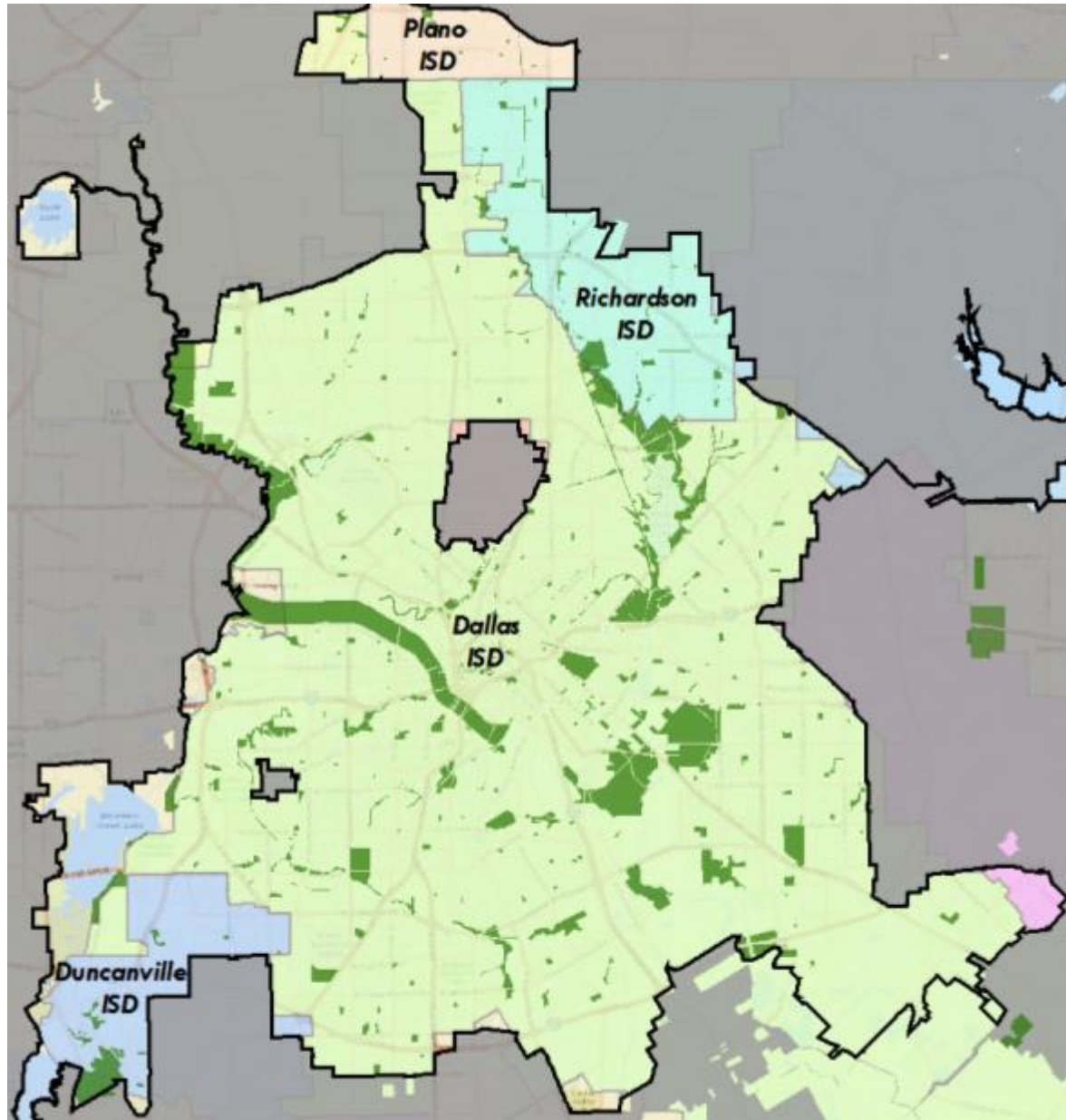
DISD Campus Map



Background

- City and School District Agreement Briefed/Discussed at three Park Board meetings
 - May 18, 2017: Full Park Board briefing
 - November 16, 2017: Administration and Finance Committee briefing
 - January 4, 2018: Administration and Finance Committee agenda item

School Boundary Map



DISD Deal Points

- DISD agrees to the following:
 - Formally allow public access to school campus grounds after normal school hours and weekends for a term of 10 years with two renewals of five years each
 - Provide gated entrance or other convenient entry point for access to grounds adjacent to park amenities
 - For capital partnership projects, District will provide new play equipment for playgrounds utilizing a color scheme acceptable to both parties
 - Will work with Texas Trees Foundation (TTF) to supplement capital projects if deemed beneficial

DISD Deal Points

- City agrees to the following:
 - Develop a yearly improvement plan subject to funding availability of both parties
 - Develop a playground prototype if needed
 - Design a partnership sign to be placed adjacent to outdoor amenities
 - Will work with Texas Trees Foundation to supplement capital projects if deemed beneficial

DISD Deal Points

- City agrees to the following:
 - For capital partnership projects, City will build concrete accessible walkway (if not present), playground containment edge and subsurface drainage for new playgrounds
 - Will provide maintenance of concrete improvements and playgrounds at partnership sites

DISD Deal Points

- Other Terms
 - Capital improvements made to campuses will remain District property
 - District may relocate improvements as needed as long as public access is maintained and improvements are restored once need has been addressed
 - Site selection for capital improvements shall be beneficial for both residents and school needs
 - Capital improvements shall be designed with the consent of the City and the District
 - City and District shall each be responsible for the sole negligent acts of their officers, agents, employees or separate contractors

Implementation and Funding

- Propose to undertake one to two playground improvement projects per year subject to funding availability of both parties
- City and DISD plan to seek third party/foundation funding for capital improvements for a portion or all of the partnership sites
 - Texas Trees Foundation working in conjunction with the City and DISD has secured \$800,000 for capital improvements at 5 sites
 - Storey, Jones, Gooch, Rogers, Tatum

Implementation and Funding

- There is no financial commitment from the City until funding is approved for capital improvements or grant funding is received
- Once capital improvements are completed, City agrees to only maintain the playground and concrete improvements
 - Remainder of campus will be maintained by DISD
- Funding for improvements will occur during regular budget process

Financial Details

- DISD Contribution
 - Land Value - \$27,550,000
 - 126.5 acres x \$5 sq ft
 - Play equipment and installation - \$35,000 per site
- City Contribution
 - Site Improvements - \$25,000 to \$50,000 depending upon site conditions
 - Annual Maintenance - \$3500 per site

ILA Next Steps

- Consideration of ILA by City Council
 - February 28, 2018
- Consideration of ILA by DISD Board of Trustees
 - DISD staff will schedule once agreement has been approved by the Park Board and City Council

Summary

- Staff recommends entering into the agreement with DISD
 - Best/most economical strategy to fill critical service gaps “park deserts”
 - Utilizes a national best practice
 - Increases 10 minute walk criteria to 70% of residents

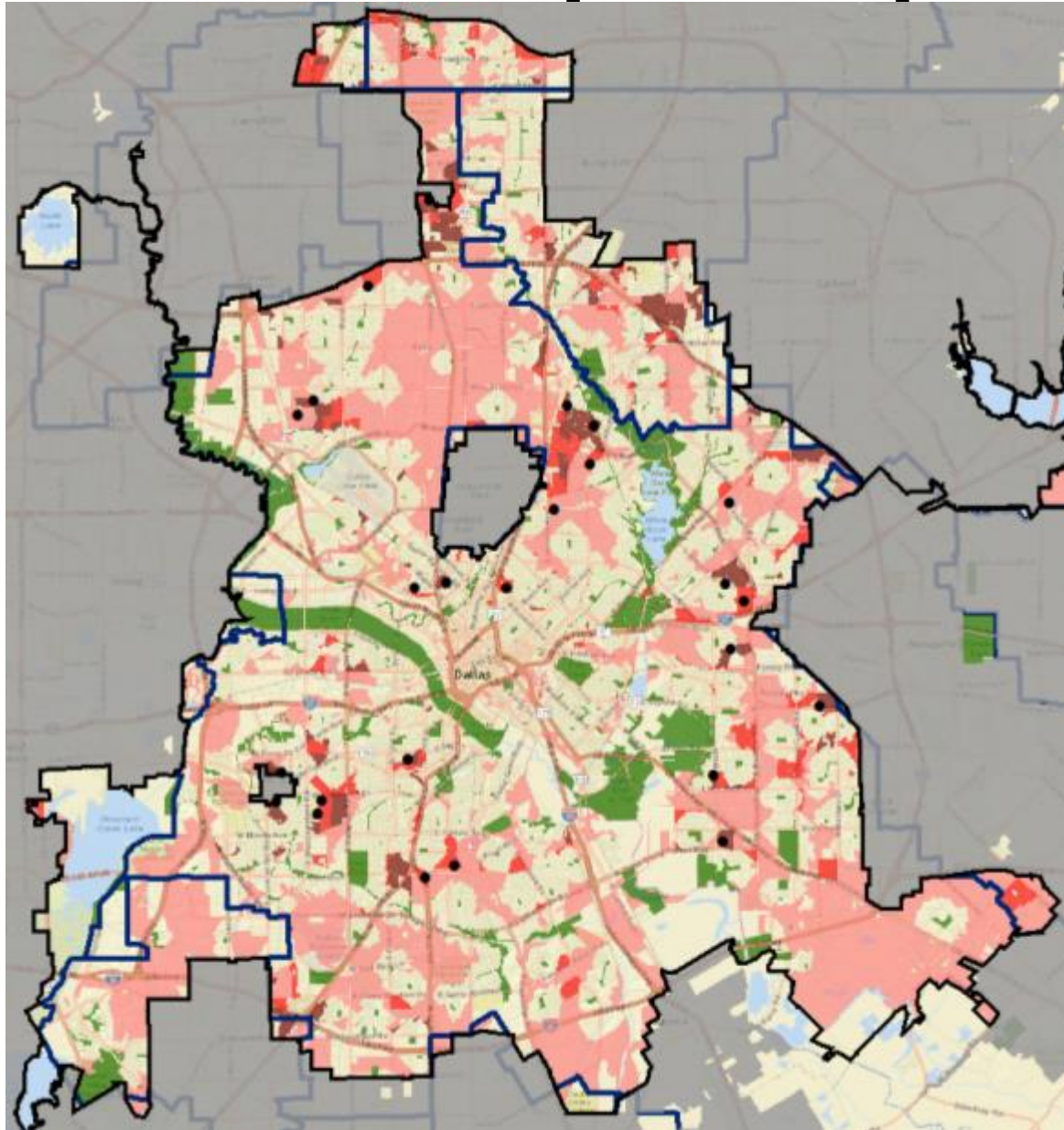
Appendix

Campus List

- DISD Schools

- District 1: Cowart ES, Donald ES, Reagan ES, Salazar ES
- District 2: Houston ES, Medrano ES, Spence ES
- District 3: Jones ES
- District 4: Patton ES, Storey MS
- District 5: Ireland ES
- District 6: Burnet ES, Medrano MS
- District 7: Conner ES, Lang MS, Guzick ES, Tatum ES
- District 8: Douglass ES
- District 9: Reinhardt ES
- District 11: Frank ES
- District 13: Gooch ES, Lowe Sr ES
- District 14: Rogers ES, Stone ES, Jackson ES

DISD Campus Map





Dallas Park & Recreation

City and DISD Interlocal Agreement



Park and Recreation Board
February 1, 2018