



Dallas Park & Recreation



THE LOOP

Park and Recreation Board Meeting
October 15, 2020

CIRCUIT TRAIL CONSERVANCY

Inspired by the successful history of public-private partnerships in our community, the Circuit Trail Conservancy (CTC) is a non-profit established to realize the City of Dallas' vision for a connected trail system. Responsible for coordinating funding and project management oversight, the CTC is engaged with the City of Dallas to build four new trail segments to complete The LOOP.

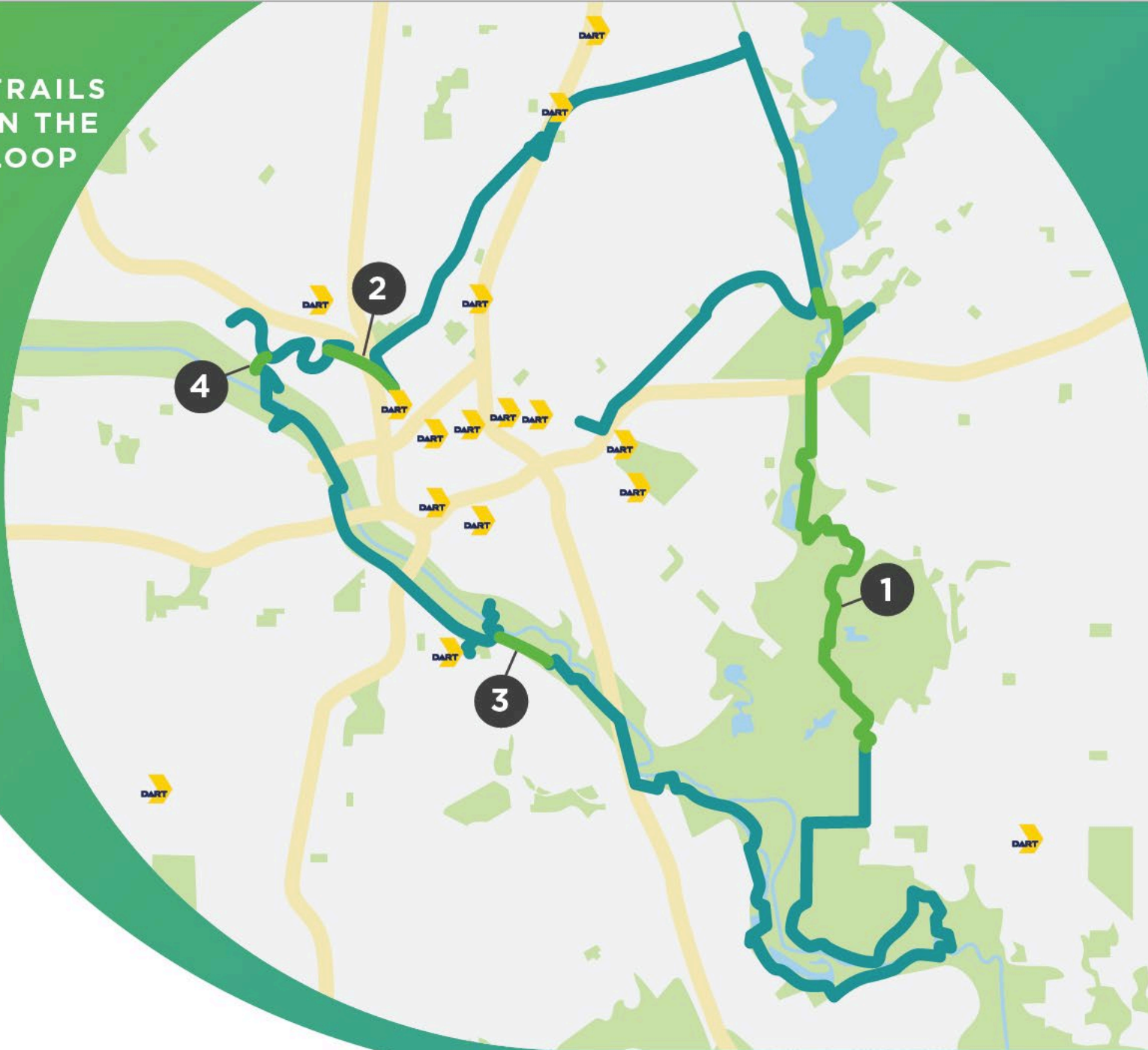
THE LOOP

10.7 MILES CONNECT 40 MILES, CREATING A 50 MILE LOOP

THE LOOP CONNECTS:

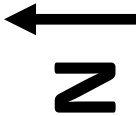
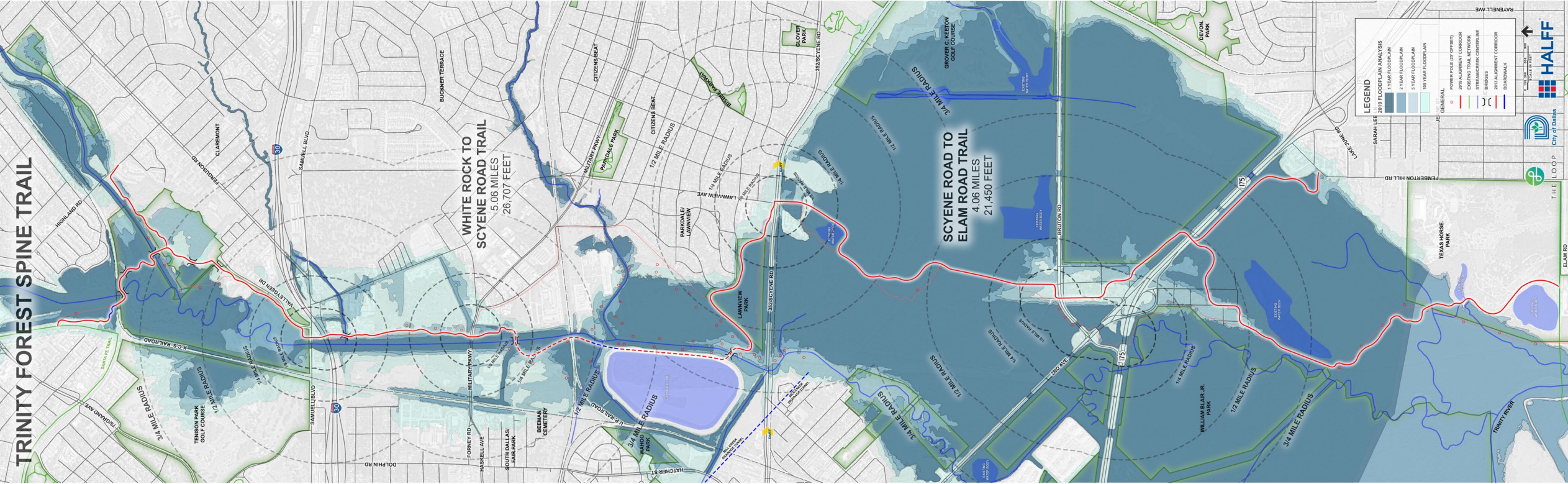
- **9 CITY COUNCIL DISTRICTS** IN THE CENTER OF DALLAS
- **OVER 100 MILES** OF THE COMPLETED TRAIL SYSTEM
- **THE TRINITY RIVER** AND THE **DALLAS-TO-FORT WORTH TRAIL** TO THE METROPLEX

TRAILS IN THE LOOP



- 1. Trinity Forest Spine Trail:** Balancing natural beauty with safe, reliable passage through the White Rock Creek and Trinity Floodplains, this 9-mile connection from White Rock Lake to the Trinity Forest is the most significant trail undertaking in North Texas, bridging geographic barriers to provide communities east of White Rock Creek pedestrian access to greater Dallas for the first time in the city's history.
- 2. Hi Line Connector:** Delivering the iconic Dallas placemaking of the Katy Trail through Victory Park and into the Design District, this one-mile urban trail is the first dedicated pedestrian path bypassing Interstate-35E and an active DART/TRE rail line.
- 3. Skyline Trail Link:** This half-mile trail and bridge creates a critical connection between the historic Santa Fe Trestle Trail and the Trinity Forest at the end of the Dallas Trinity Levee System
- 4. Trinity Gateway Connection:** The entry point from Dallas to explore the Trinity River, this half-mile segment provides access from the Trinity Strand Trail to the Skyline Trail and is part of the 76-mile Fort Worth to Dallas Trail.

TRINITY FOREST SPINE TRAIL – 9 MILES



Project Limits: Santa Fe Trail to Pemberton Hill Road

EXISTING CONDITIONS ASSESSMENT



**VERTICAL CLEARANCES
AND CONSTRUCTABILITY**



**BRIDGES AND STREAM
FLOWS**



RAILROAD UNDERPASSES



CONNECTIVITY



NATURAL CHARACTER



SAFETY/SECURITY



SHARED ALIGNMENTS



WETLANDS

AGENCY STAKEHOLDERS



City of Dallas



North Central Texas Council of Governments



US Army Corps of Engineers®





TRESTLE UNDERPASSES



BRIDGE UNDERPASSES



BRIDGE UNDERPASSES

TRINITY FOREST SPINE TRAIL – NORTH PHASE 1



Project Limits:

- Santa Fe Trail to Samuel Blvd
- Spur to Highland Road
- The CTC participated in the Samuel Grand Master Plan process to ensure the trail and future Tenison Glen improvements are coordinated
- Public consensus at the recent public meeting supported a shortened 9-hole golf course on the west side of White Rock Creek which will eliminate any potential conflicts

HIGHLAND ROAD SPUR



Satellite view of alignment from
TheLOOPDallas.org



Trail spur connects seamlessly into new Highland Road
Complete Street design; also designed for future Ash
Creek Greenbelt Trail

SAMUEL TRAILHEAD



NW Corner of Samuel Blvd and Valleyglen will be improved and turned into a Trailhead.

Underbrush and trash will be cleared to provide visibility of trailhead from both streets.

The trailhead has been designed to incorporate future connections, including dedicated pedestrian and bicycle facilities along Samuel Blvd.

Lighting, permanent parking, and additional amenities are in design and will be part of an upcoming fundraising effort.



THE LOOP

THANK YOU

QUESTIONS?